

# **STATUS OF FOLLOW-UP ACTIONS: DEI & EJ IN GRANT GUIDANCE**

**Darius Stanton**  
**Diversity Workgroup Staffer**  
**4/12/18**

## OUTLINE

- Overview of 5 November Management Board Asks
- Describe Ask #4 - Grant Guidance status updates
- General improvements to responses
- Highlights from jurisdictions' responses



## REQUESTS OF MANAGEMENT BOARD – NOV. 2017

- ☐ Establish a position or committee dedicated to DEI from each jurisdictional and federal partner.
- ☐ Set a 2025 target for CBP Diversity Indicator.
- ☐ Remove term “minority” from outcome & management strategy.
- ☐ Provide status updates on revised state grant guidance to address DEI/EJ.
- ☐ Assist in broadening our outreach efforts.

## Provide status updates on revised state grant guidance to address DEI/EJ

“ *Per the EPA Chesapeake Bay Program Office 2018 Grant and Cooperative Agreement Guidance, jurisdictions should provide a written status update by March 31, 2018 on how diversity and/or environmental justice (EJ) is being addressed in their state grant guidance or policies for CBIG, CBRAP, or other Bay Program funding.*”

## TEXT IN 2017 GRANT GUIDANCE

- See Stewardship/Diversity sections in Grant Guidance, Pages 27-30.



## GENERAL COMMENTS

- ☐ 5/7 Jurisdictions sent in status updates
- ☐ All jurisdictions are implementing projects/programs that spearhead DEI/EJ specific to their jurisdiction.
- ☐ Some jurisdictions plan to include language in subgrant conditions.
- ☐ EJ communities and underserved communities were identified, but EJ SCREEN was not used by all.
- ☐ Where possible, replace term “minority” with “underrepresented or underserved” communities.
- ☐ Not all jurisdictions explicitly mentioned how their DEI/EJ align with the goals or outcomes of CBP.



## DELAWARE – DE DNREC

- ☐ *Seaford – Bucks Branch Tax Ditch Stabilization*
- ☐ *Blades - Rain Garden Retrofit at Blades Volunteer Fire Company*
- ☐ *Bridgeville - Heritage Shores Bio-reactor.*
- ☐ *Seaford - Clearbrooke Estates Stormwater Retrofit*
- ☐ (All of the demographic information provided was sourced from EJScreen.)



## DELAWARE – DE DNREC

- EJ Screen Tool was used to identify underserved communities in Delaware's portion of the Chesapeake Bay watershed. DNREC's outreach efforts in those target areas included participating in water quality oriented workshops, presentations, and events. Through those efforts over 500 residents were reached in four different underserved communities.





## WASHINGTON D.C. - DOEE

### 7 strategies to include DEI / EJ

1. Targeted communication and outreach to historically underserved communities
2. targeted environmental education for historically underserved communities
3. hiring agency staff to focus on equity and community engagement
4. training the public and creating employment opportunities to diversify its partners and workforce
5. training internal staff to improve collective vocabulary on equity, diversity and environmental justice
6. promoting environmental justice throughout the community
7. tracking the numerous actions taken towards improving diversity and assessing their efficacy and reach.



## WASHINGTON D.C. - DOEE

- ☐ Has an Office of Enforcement and Environmental Justice (OEEJ)
- ☐ Watershed Protection Division has hired FTE Equity Advisor for the branch.
- ☐ RiverSmart door-to-door outreach campaign
- ☐ Green Jobs Training – Latin American Youth Center program
- ☐ Green Wrench Technical Assistance Program
- ☐ Festival del Anacostia



## MARYLAND – MD DNR (CBIG)

- Work2LiveWELL (Baltimore & Cambridge, MD)
- Green Infrastructure Resiliency Grant
- Watershed Assistance and Green Streets, Green Jobs, Green Towns Grant Programs
- (All of the demographic information provided was sourced from EJScreen; the percentiles are for the state of Maryland.)



## MARYLAND – MD DNR (CBIG)

- ☐ Student stream Study and Action to Benefit the Cheapeake Bay
- ☐ Cheapeake & Coastal Service Unit provides technical assistance to diverse groups.



## MARYLAND – MDE (CBRAP)

- Under grant conditions to local government projects includes the following Grant conditions:
  - The Grantee agrees to comply with the requirements of the U.S. Environmental Protection Agency's Program for Utilization of Small, Minority and Women's Business Enterprises (M/WBE) contained in 40 CFR, Part 33, in all procurements, and require any prime contractors and A/E firms to do the same, consistent with the Department's Disadvantaged Business Enterprise (DBE) Program procedures.
  - The Grantee agrees to submit to the Department for review and approval all DBE and M/WBE participation information. This information must be provided to the Department semiannually by March 31 and September 30, as applicable, beginning with the federal fiscal year (Oct. 1 – Sept. 30) the Grantee receives the award.



## NEW YORK – NY DEC

- ☐ Created an Environmental Justice Program in 1999 and has an Environmental Justice Office
- ☐ Identified 84 potential EJ Areas using their state



## NEW YORK – NY DEC

**PLANNED ACTION: DEC will add the following language in included in all competitive grant opportunities issued using Chesapeake Bay Implementation Grant (CBIG) funding:**

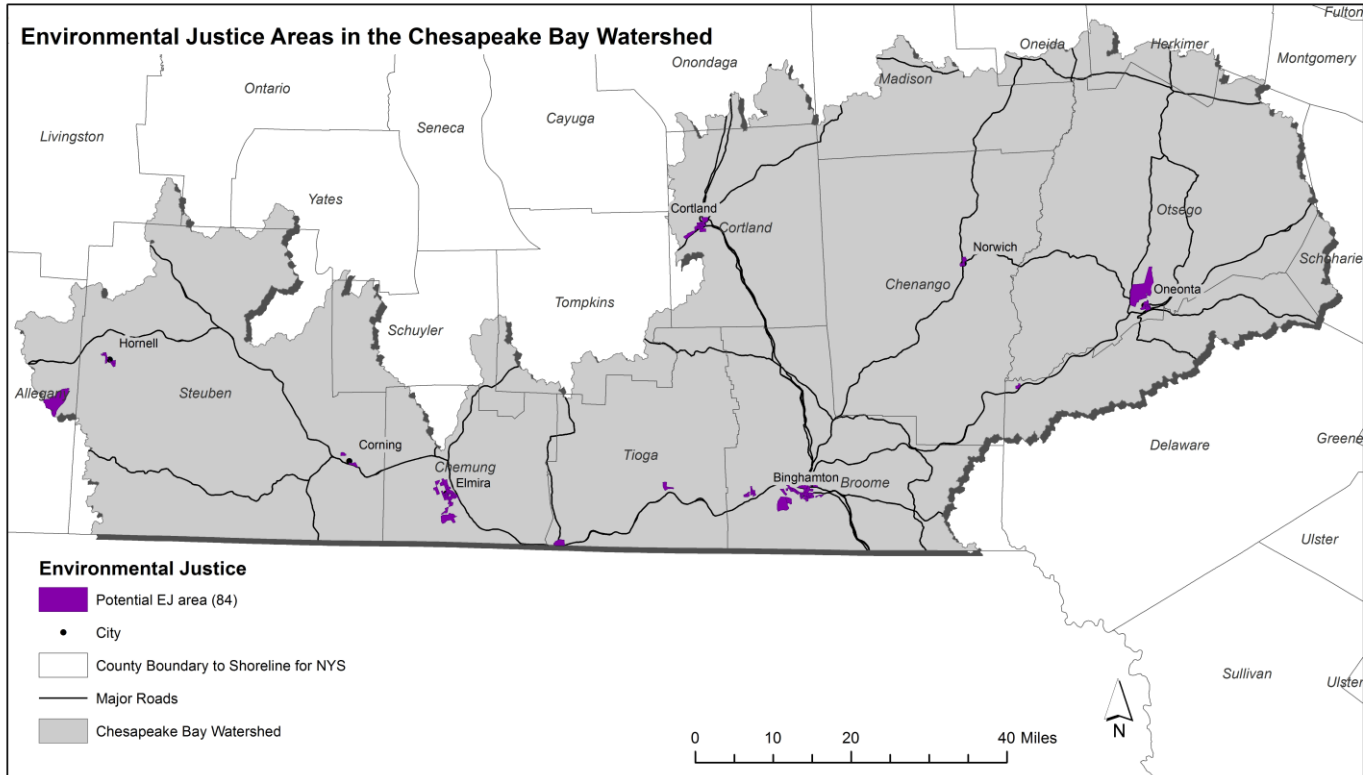
**Priority for Environmental Justice (EJ) Projects in Grant Funding**

A proposed project that is located in an EJ community or will directly benefit an EJ community, **will be eligible for five (5) priority points in the project scoring.** Maps of EJ areas in New York State are available at: <http://www.dec.ny.gov/public/899.html>. To qualify for the extra points, you must provide at the time of application the following details:

- a.) The exact street location where the project is to be implemented (no P.O. Box) or where the benefit will be provided.
- b.) A brief (few sentences) description of how the project will benefit minority or low-income populations that experience disproportionate adverse environmental impacts such as pollution from multiple industrial facilities, sub-standard water quality, concentrated diesel emissions from bus depots, or other heavy vehicle traffic, adverse health effects related to environmental impacts (high asthma), lack of access to green benefits such as open space, environmental education or parks, or other such impacts.



# NEW YORK – NY DEC







## PENNSYLVANIA – PA DEP

- Received a status update from PA DCNR, who does not receive CBIG/CBRAP funding, have received email responses from PA DEP, expecting further follow-up.



## VIRGINIA

- ☐ Will receive a response from Deputy Secretary Ann Jennings on Virginia's status updates.



## WEST VIRGINIA – WV DEP

### Language to be added to WV Chesapeake Bay Subgrant Conditions Document:

#### Addressing Diversity in Work Plans

- ☐ Consistent with the Chesapeake Bay Program's Diversity Outcome Management Strategy ([www.chesapeakebay.net/managementstrategies](http://www.chesapeakebay.net/managementstrategies)), sub-awards are asked to Identify minority stakeholder groups that are not currently represented in the leadership, decision making and implementation of conservation and restoration activities, and create meaningful opportunities and programs to recruit and engage them in WV's partnership efforts.
- ☐ Diversity is defined as: "Expanding the diversity of the workforce and participants in restoration and conservation activities means to include a wide range of people of all races, income levels, faiths, genders, ages, sexual orientations and disabilities, along with other diverse groups. For this effort to be successful it will require us to honor the culture, history and social concerns of local populations and communities."
- ☐ Sub-awards are further encouraged to use the new EPA environmental justice screening and mapping tool, "EJSCREEN" ([ejscreen.epa.gov/mapper/index.html](http://ejscreen.epa.gov/mapper/index.html)) to help them in targeting Bay restoration funding to diverse communities and areas of potential environmental justice concerns. Environmental justice is the fair treatment and meaningful involvement of all people regardless of race, color, national origin, or income, with respect to the development, implementation, and enforcement of environmental laws, regulations, and policies.



## WEST VIRGINIA – WV DEP

- ☐ Applied for EPA – EJ Collaborative Problem Solving Grant.
- ☐ Partnership with Churches for stormwater education and raingarden installation projects.
- ☐ Using CommuniTree with USFS to map tree planting sites.



## MOVING FORWARD

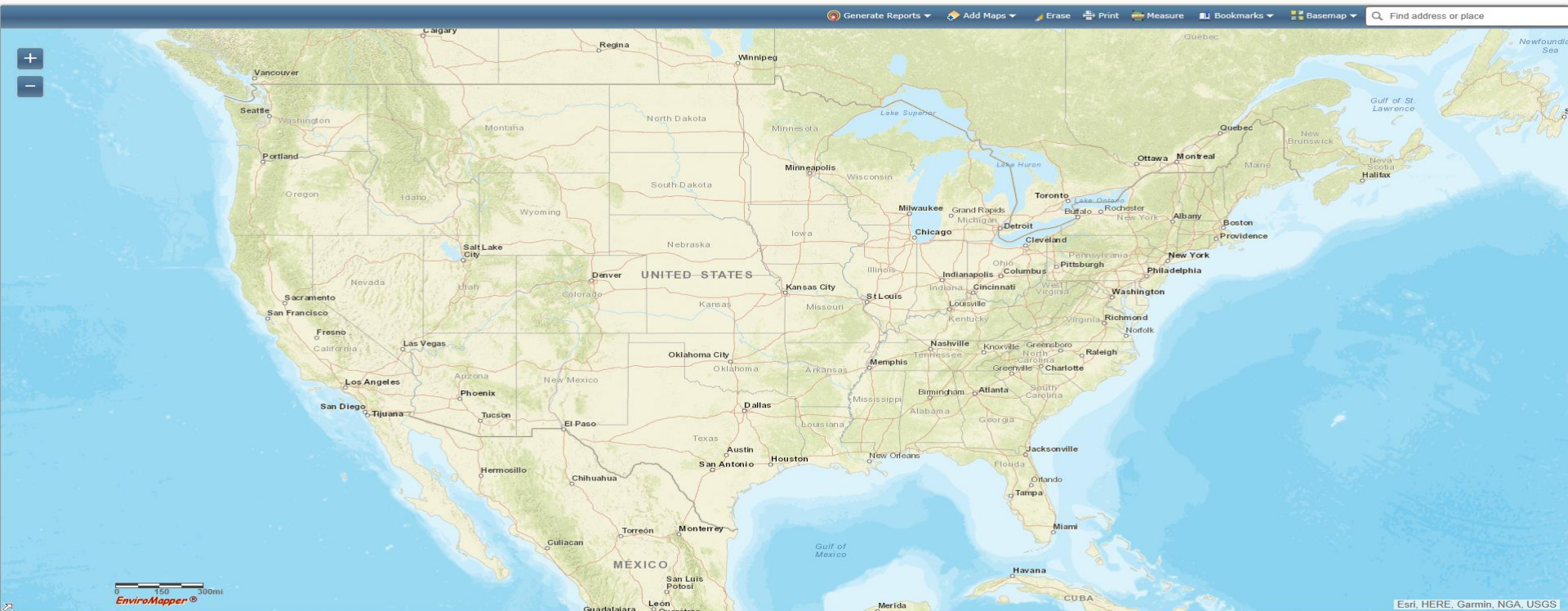
Where applicable:

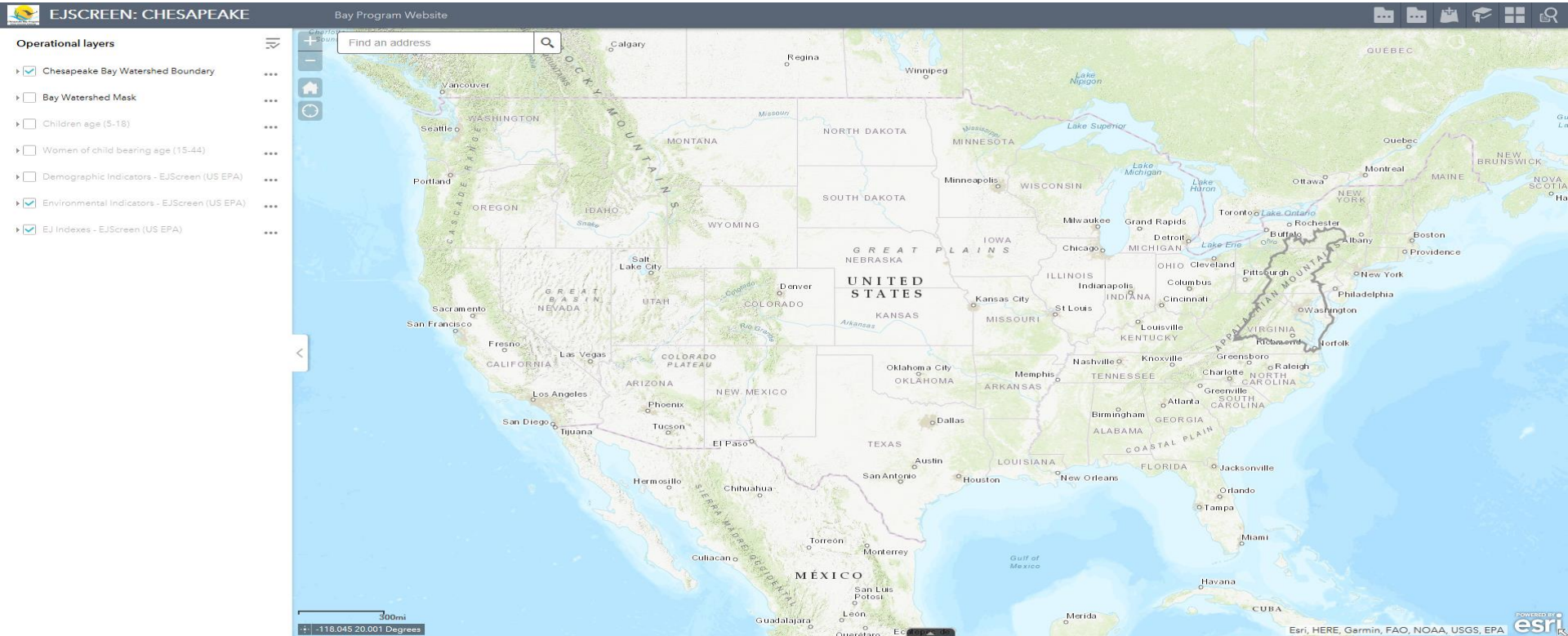
- ☐ Add additional language to subgrants to address DEI/EJ
- ☐ Give additional points in grant review process if project addresses DEI/EJ
- ☐ Illustrate the usage of a mapping tool in the status updates using existing mapping tools. Ex. State EJ tool, EJ SCREEN or....



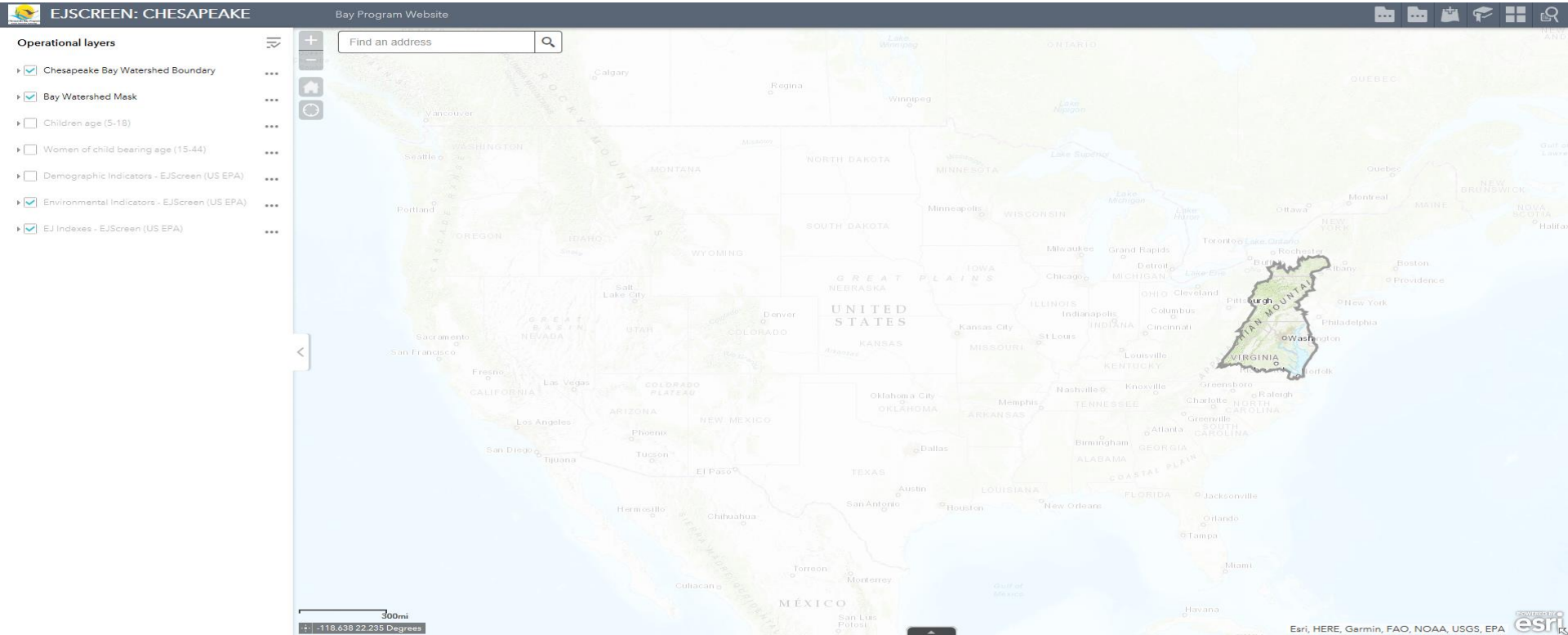
**Chesapeake Bay Program**  
*Science. Restoration. Partnership.*

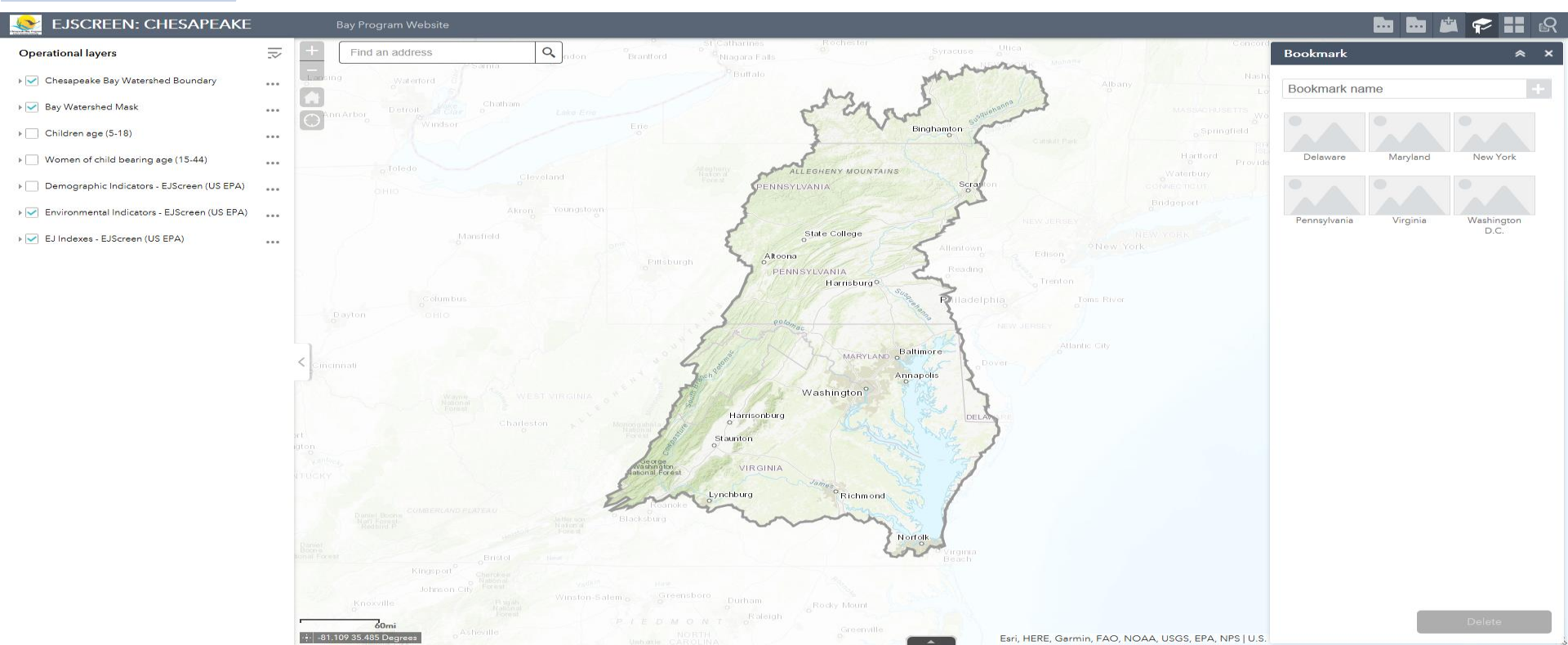
# EJ SCREEN – Chesapeake !!!



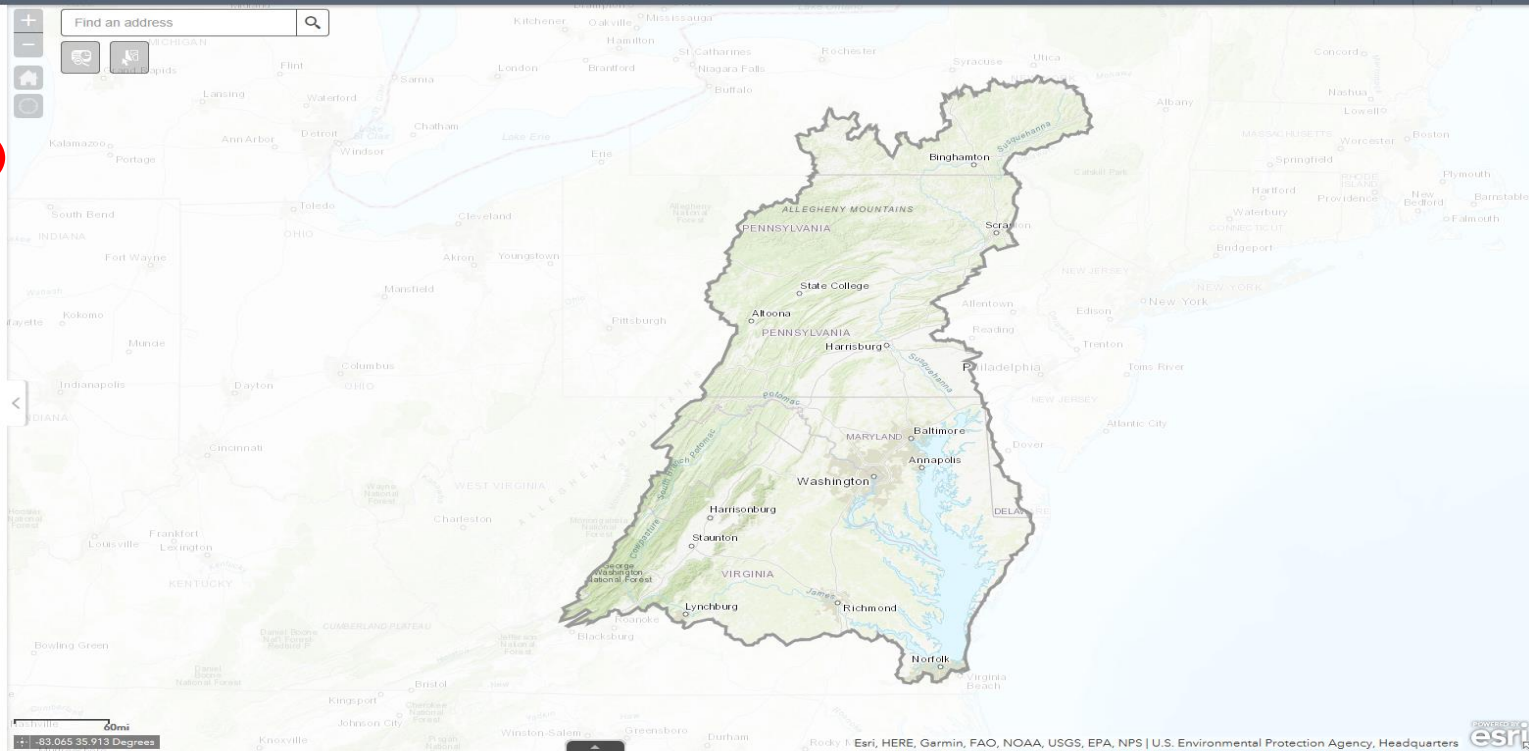


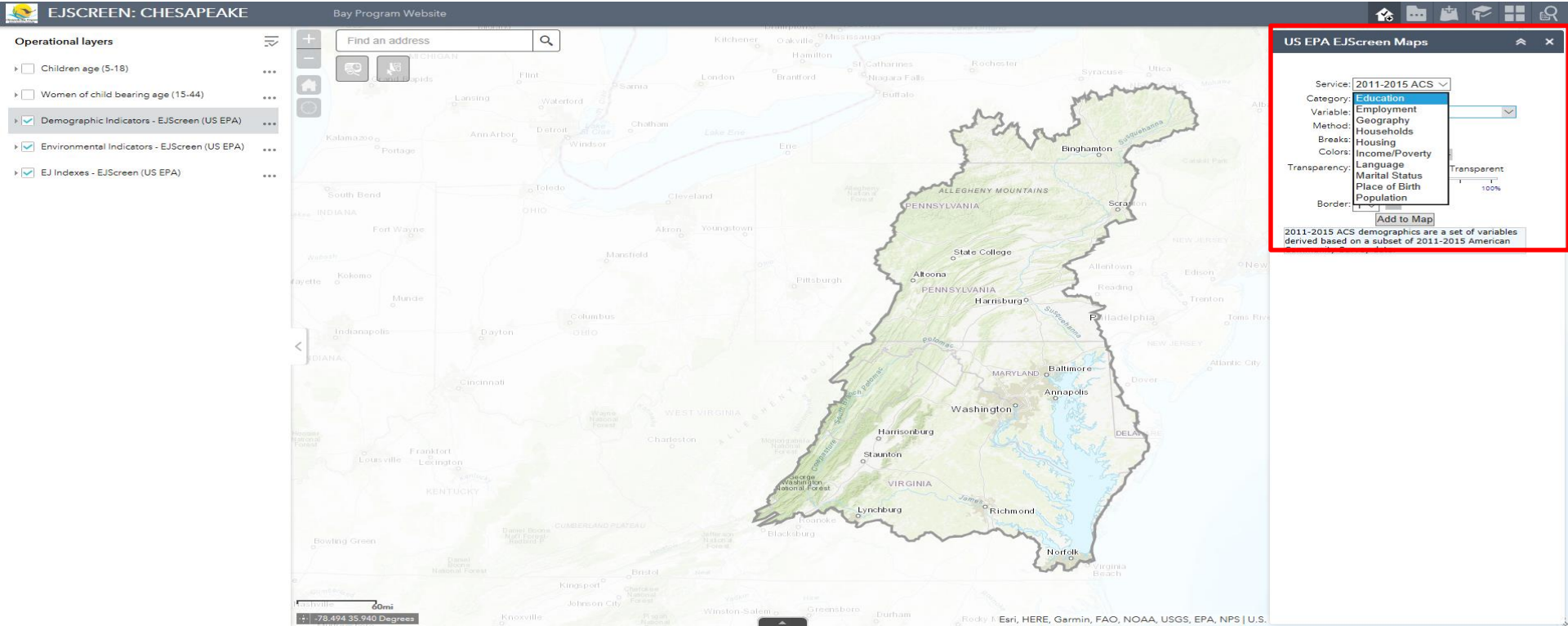






- ☐ Children age (5-18)
- ☐ Women of child bearing age (15-44)
- ☒ Demographic Indicators - EJScreen (1)
- ☒ Environmental Indicators - EJScreen (1)
- ☒ EJ Indexes - EJScreen (US EPA)





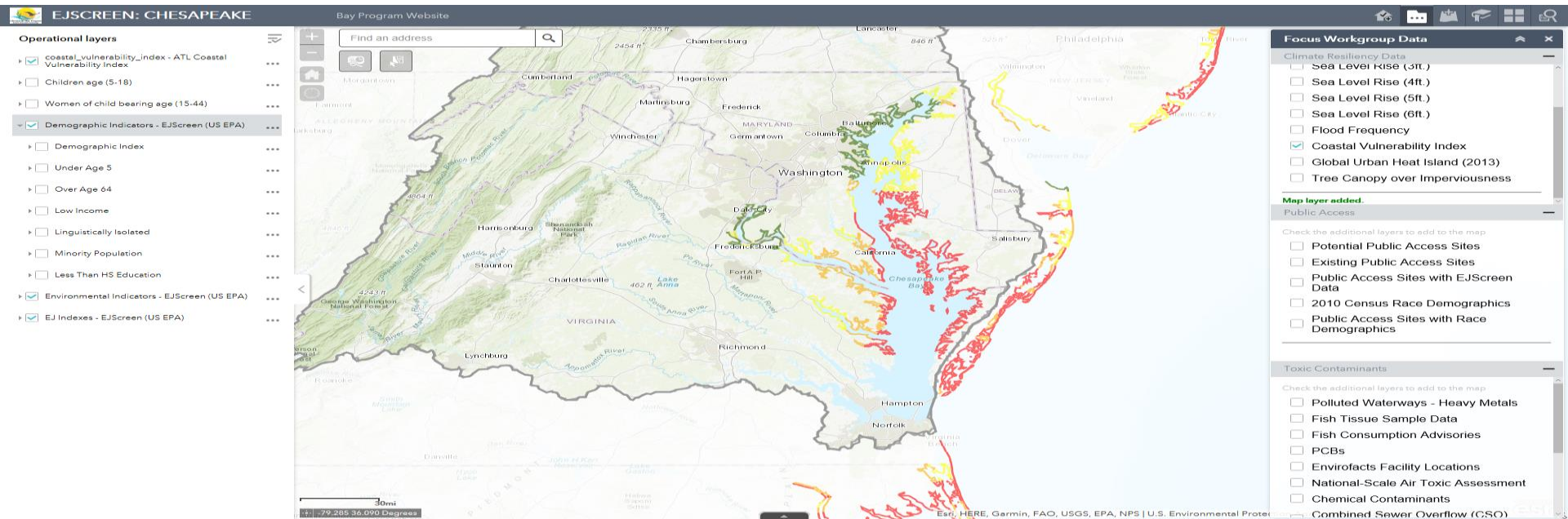
## **Three pilot workgroups:**

- 1. Climate Resiliency**
- 2. Public Access**
- 3. Toxic Contaminants**

# Climate Resiliency

“ As work group staffer/state agency employee, I want to use the coastal vulnerability index with EJScreen data so I can integrate the environmental justice data with the Coastal Vulnerability Index.”







Operational layers

☒ coastal\_vulnerability\_index - ATL Coastal Vulnerability Index

- ☐ Low Vulnerability
- ☐ Moderate Vulnerability
- ☐ High Vulnerability
- ☐ Very High Vulnerability

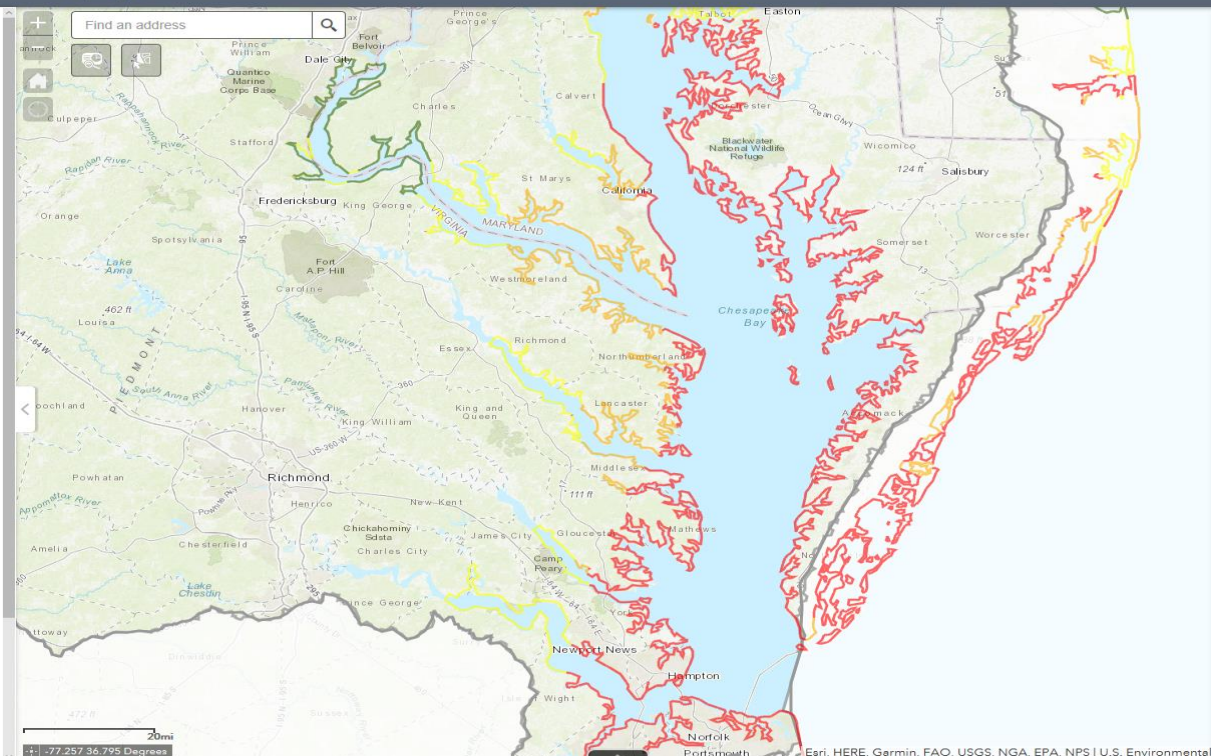
- ☐ Children age (5-18)
- ☐ Women of child bearing age (15-44)

☒ Demographic Indicators - EJScreen (US EPA)

- ☐ Demographic Index
- ☐ Under Age 5
- ☐ Over Age 64
- ☐ Low Income
- ☐ Linguistically Isolated
- ☐ Minority Population
- ☐ Less Than HS Education

☒ Environmental Indicators - EJScreen (US EPA)

- ☐ PM 2.5
- ☐ Ozone
- ☐ NATA Diesel PM
- ☐ NATA Cancer Risk
- ☐ NATA Respiratory HI
- ☐ Traffic Proximity
- ☐ Lead Paint Indicator



Focus Workgroup Data

Climate Resiliency Data

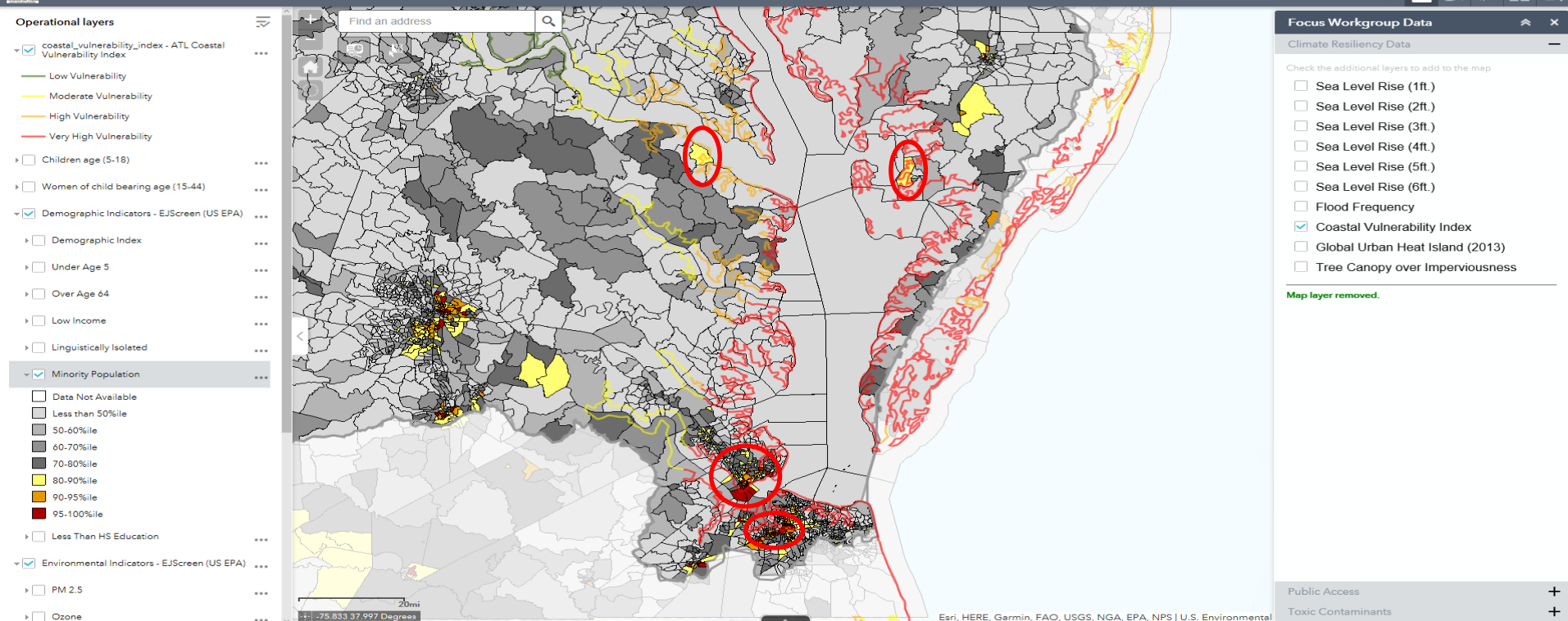
Check the additional layers to add to the map

- ☐ Sea Level Rise (1ft.)
- ☐ Sea Level Rise (2ft.)
- ☐ Sea Level Rise (3ft.)
- ☐ Sea Level Rise (4ft.)
- ☐ Sea Level Rise (5ft.)
- ☐ Sea Level Rise (6ft.)
- ☐ Flood Frequency
- ☒ Coastal Vulnerability Index
- ☐ Global Urban Heat Island (2013)
- ☐ Tree Canopy over Imperviousness

Map layer removed.

Public Access

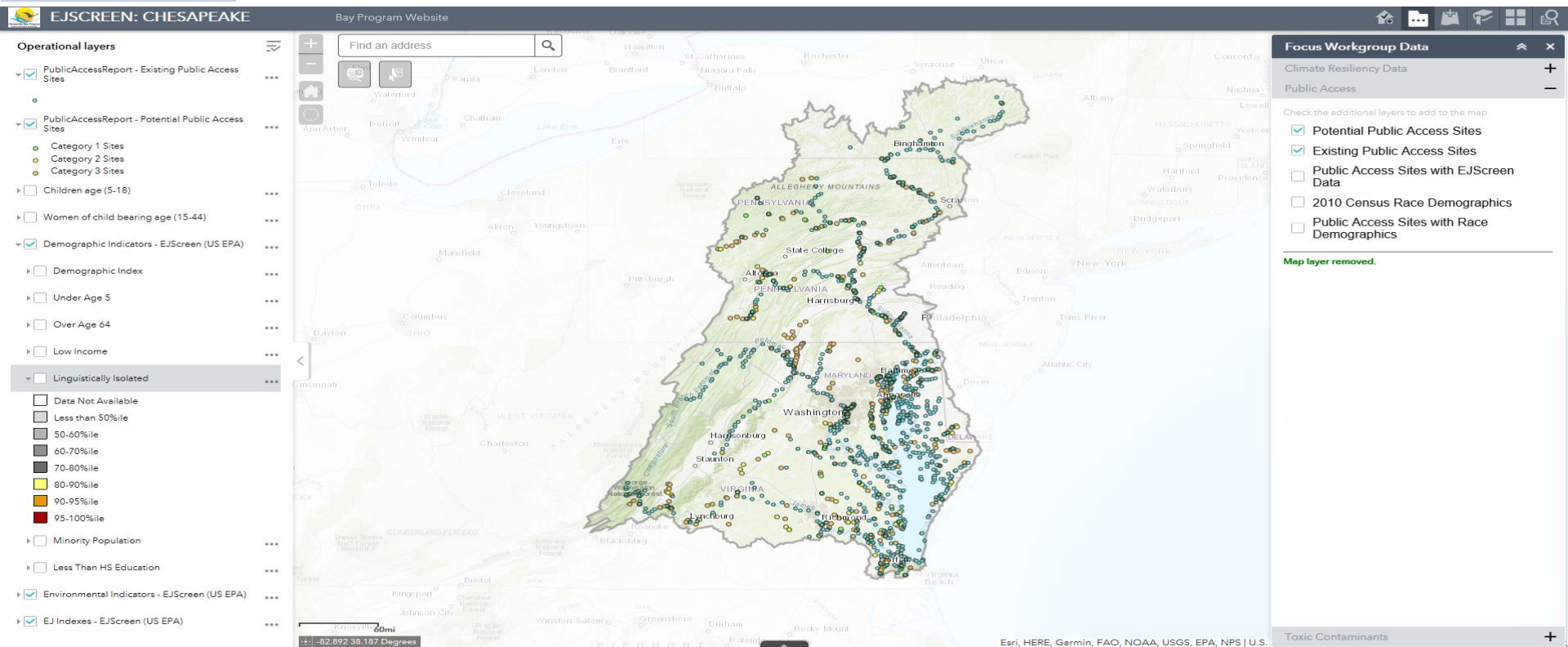
Toxic Contaminants



CVI Layer + Minority Population Data Layers Overlapped

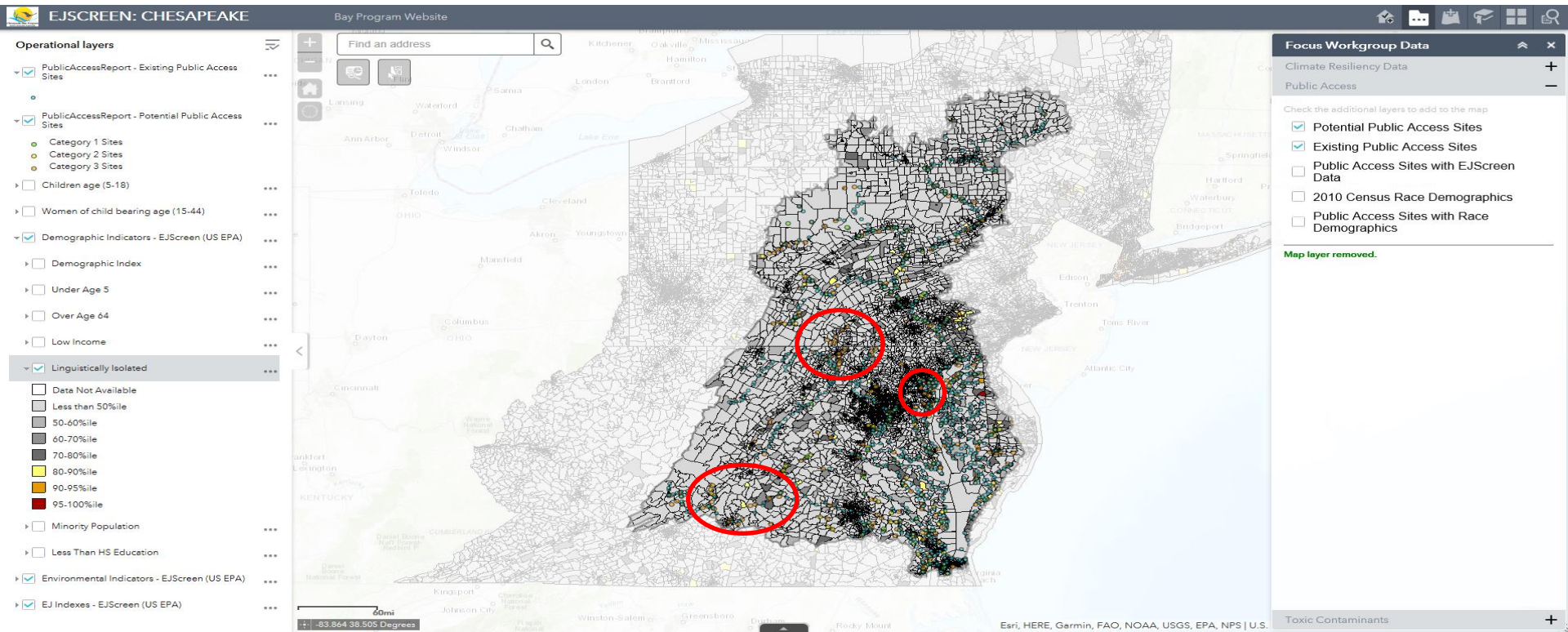
# Public Access

“ As local official, I want to understand the ethnic populations so I can ensure that signage is understandable in their language (multi-lingual signage)”

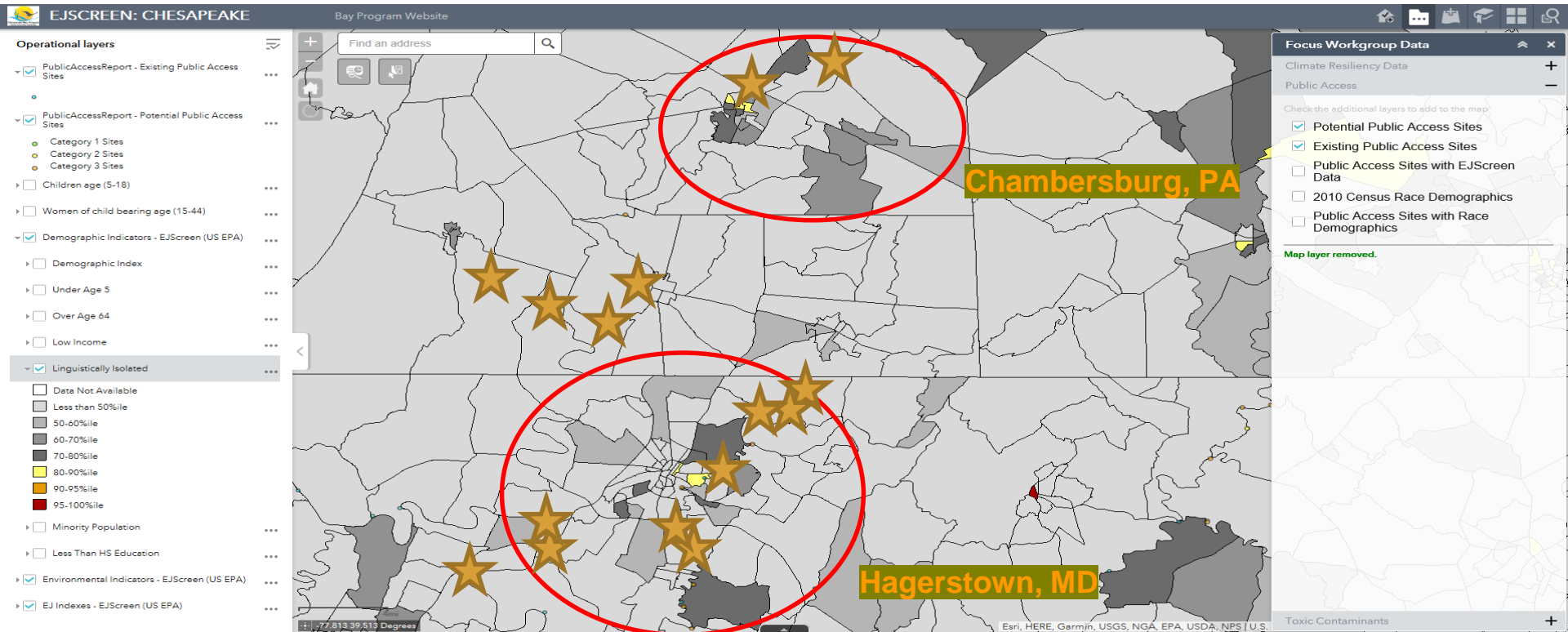


Potential Public Access Site (Orange, Yellow, Green) +  
Existing Public Access Site (Blue)

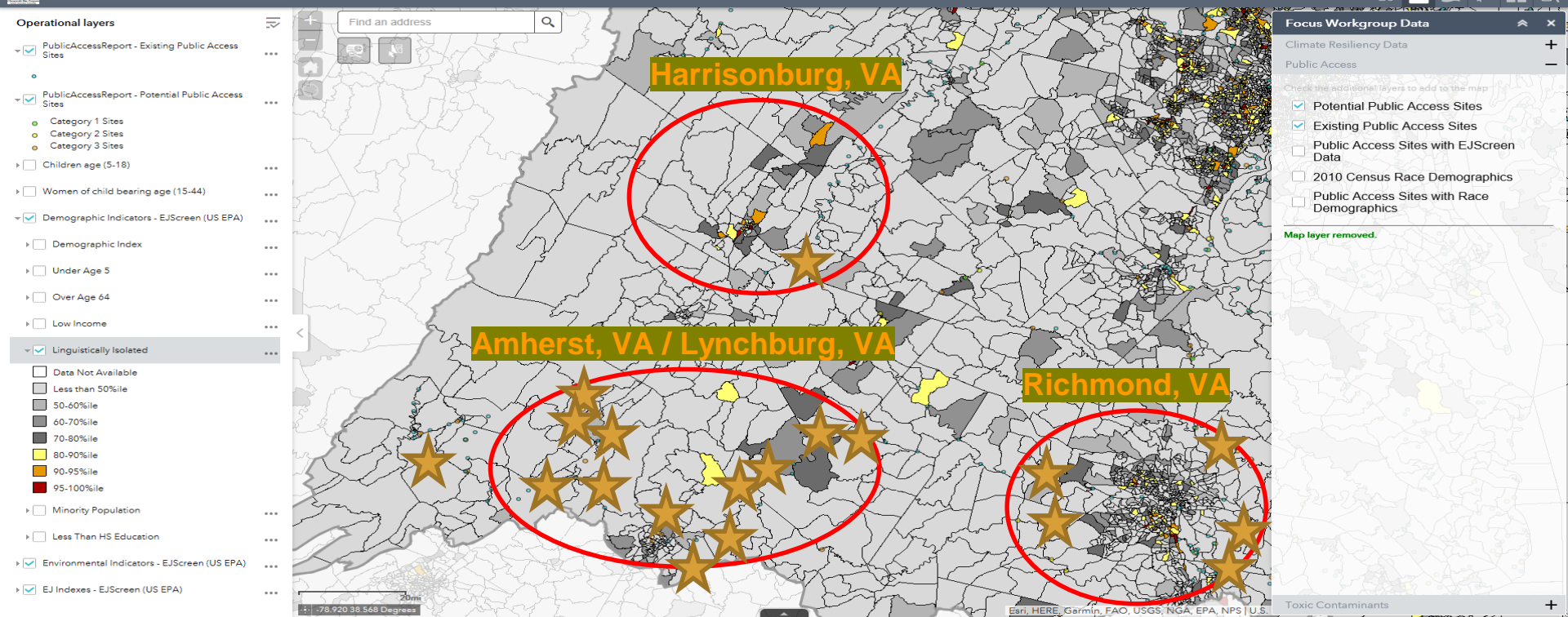




Potential & Existing Public Access Sites + Linguistically Isolated Population data layers overlapped

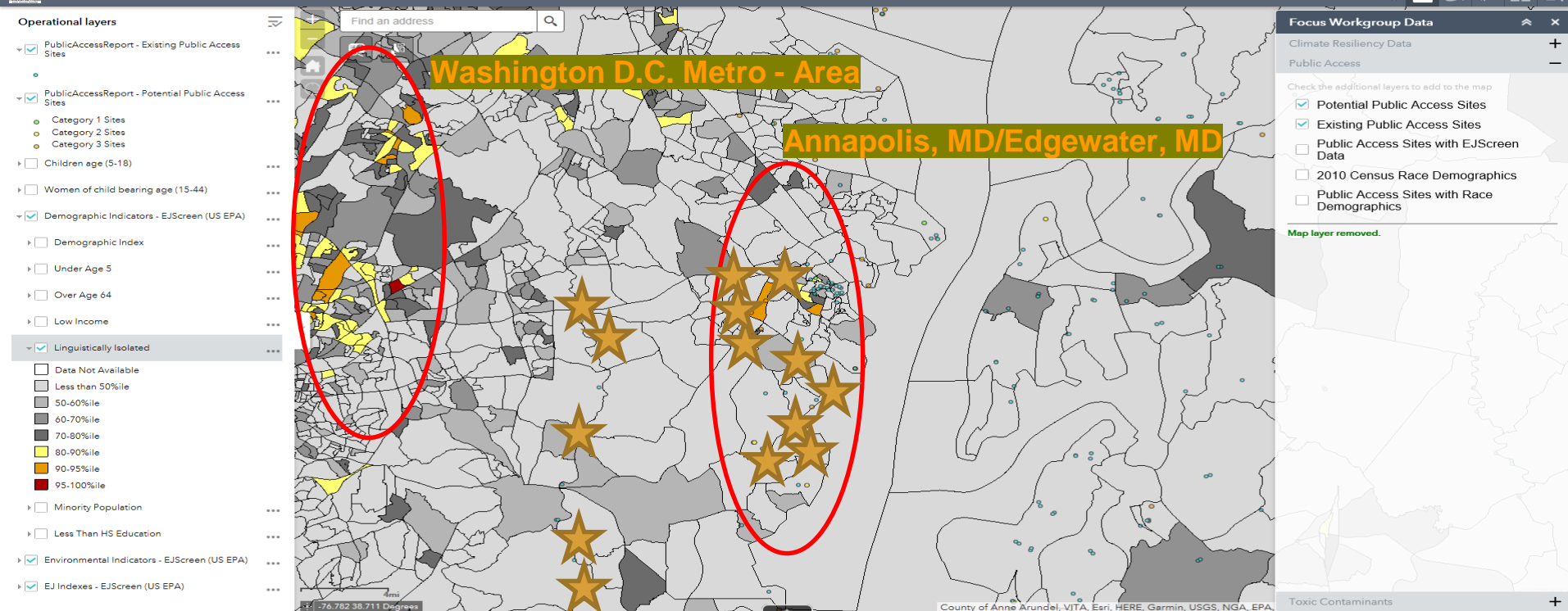


Potential & Existing Public Access Sites + Linguistically Isolated Population data layers overlapped in NW Maryland/ Southern Pennsylvania



Potential & Existing Public Access Sites + Linguistically Isolated Population data layers overlapped (Virginia)

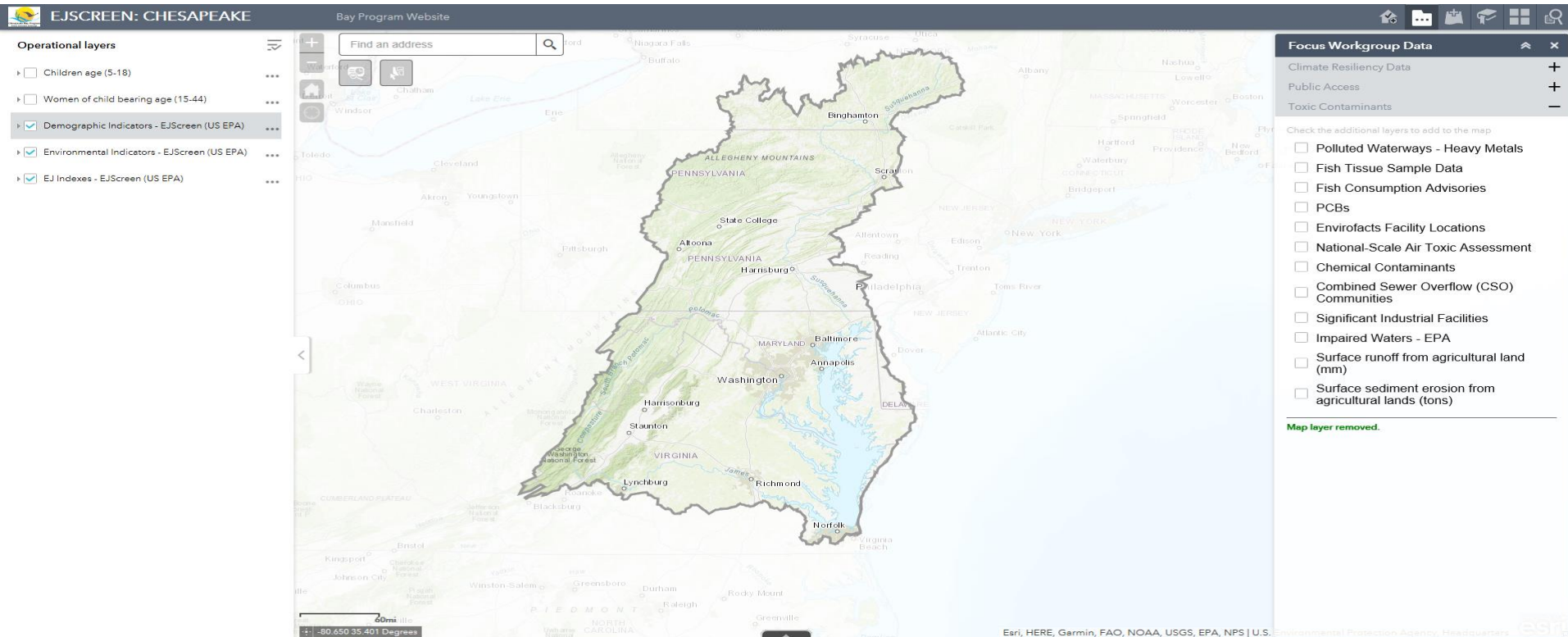


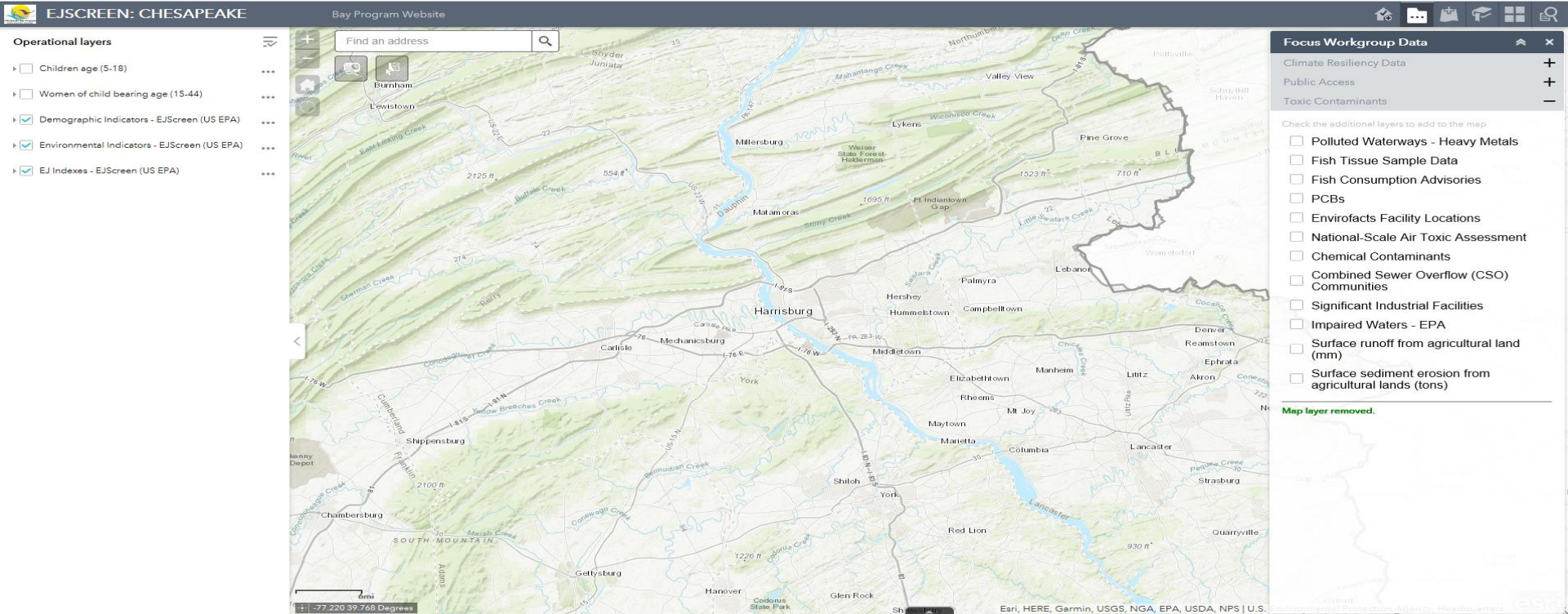


Potential & Existing Public Access Sites + Linguistically Isolated Population data layers overlapped (Maryland & Washington D.C. Metropolitan area)

# Toxic Contaminants

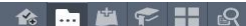
“ As woman of child bearing age, I want to understand where there's a higher risk of toxic consumption in fish so I can avoid eating fish collected in those areas.”



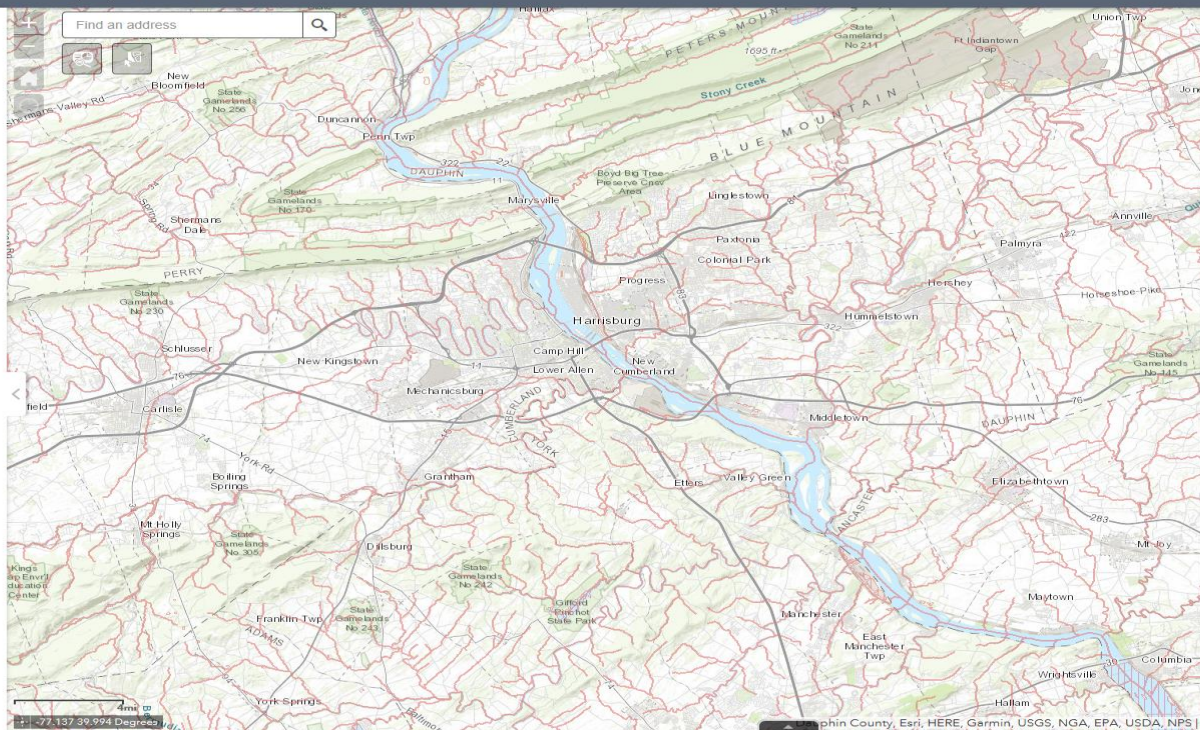


Bay Watershed Mask Data Layer + Available Toxic Contaminants Data Layers (Harrisburg, PA)





- Operational layers
- ☐ Children age (5-18)
  - ☐ Women of child bearing age (15-44)
  - ☒ FISH\_NP21 - Fish Consumption Advisories
    - ☒ Fish Consumption Advisories Point
    - ☐ Fish Consumption Advisories Line
    - ☒ Fish Consumption Advisories Area
  - ☒ Demographic Indicators - EJSscreen (US EPA)
  - ☒ Environmental Indicators - EJSscreen (US EPA)
  - ☒ EJ Indexes - EJSscreen (US EPA)



- Focus Workgroup Data
- Climate Resiliency Data
  - Public Access
  - Toxic Contaminants

- Check the additional layers to add to the map
- ☐ Polluted Waterways - Heavy Metals
  - ☐ Fish Tissue Sample Data
  - ☒ Fish Consumption Advisories
  - ☐ PCBs
  - ☐ Envirofacts Facility Locations
  - ☐ National-Scale Air Toxic Assessment
  - ☐ Chemical Contaminants
  - ☐ Combined Sewer Overflow (CSO) Communities
  - ☐ Significant Industrial Facilities
  - ☐ Impaired Waters - EPA
  - ☐ Surface runoff from agricultural land (mm)
  - ☐ Surface sediment erosion from agricultural lands (tons)

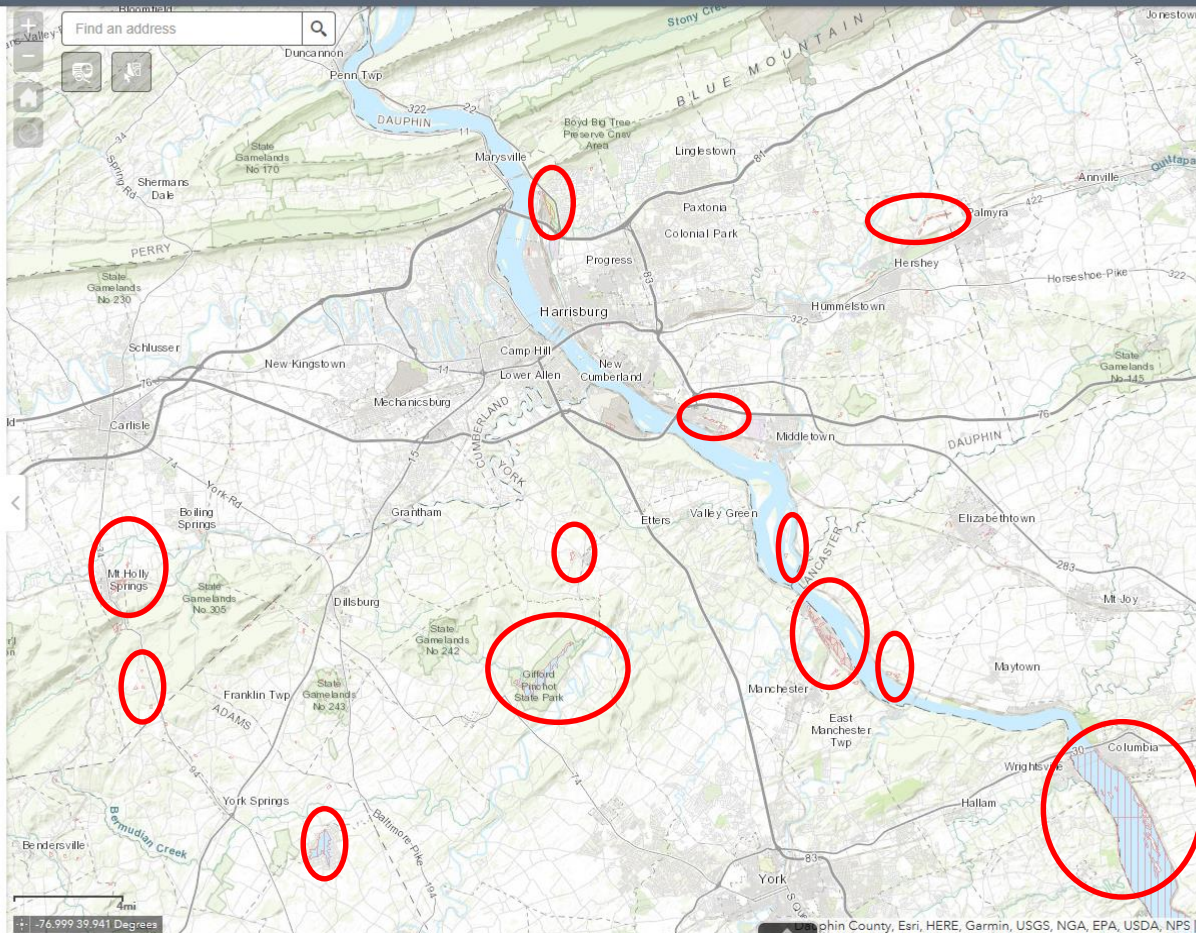
Map layer added.





Operational layers

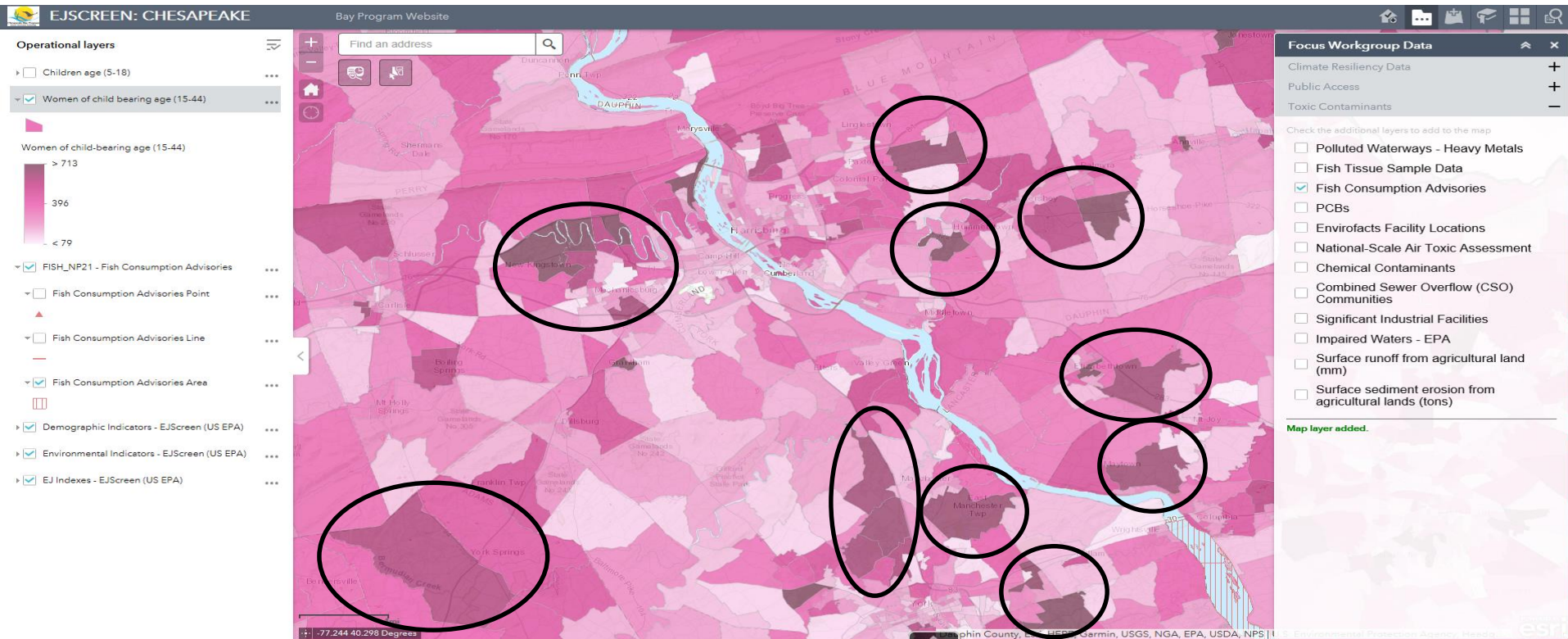
- ☐ Children age (5-18)
- ☐ Women of child bearing age (15-44)
- ☒ FISH\_NP21 - Fish Consumption Advisories
- ☐ Fish Consumption Advisories Point
- ☐ Fish Consumption Advisories Line
- ☒ Fish Consumption Advisories Area
- ☒ Demographic Indicators - EJScreen (US EPA)
- ☒ Environmental Indicators - EJScreen (US EPA)
- ☒ EJ Indexes - EJScreen (US EPA)



Focus Workgroup Data

- ☐ Climate Resiliency Data
- ☐ Public Access
- ☐ Toxic Contaminants
- ☐ Polluted Waterways - Heavy Metals
- ☐ Fish Tissue Sample Data
- ☒ Fish Consumption Advisories
- ☐ PCBs
- ☐ Envirofacts Facility Locations
- ☐ National-Scale Air Toxic Assessment
- ☐ Chemical Contaminants
- ☐ Combined Sewer Overflow (CSO) Communities
- ☐ Significant Industrial Facilities
- ☐ Impaired Waters - EPA
- ☐ Surface runoff from agricultural land (mm)
- ☐ Surface sediment erosion from agricultural lands (tons)

Map layer added.



Women of Child Bearing Age (15-44) in Harrisburg, PA



## Conclusions

- ☐ Like the National EPA EJ SCREEN Tool, yet with Chesapeake Bay Watershed Specific Data
- ☐ This tool can be used by:
  - ☐ State and Federal Agencies
  - ☐ Non-profit Organizations
  - ☐ Community Members/General Public

## Going Forward

- We would like to see workgroups, outcomes, and jurisdictions use EJ SCREEN – Chesapeake for the following:
  - Map where they are doing existing projects that interface with EJ communities
  - Identify potential new projects by overlapping social + environmental data that exist in this tool



**Chesapeake Bay Program**  
*Science. Restoration. Partnership.*

**Questions?**