



A Culture of Stewardship

The Third Quarterly Progress Meeting of the Biennial Strategy Review System
November 16, 2017

I'm Laura Free

Indicators Coordinator

U.S. Environmental Protection Agency



I'm Catherine Krikstan

Web Content Strategist

University of Maryland Center for
Environmental Science



Welcome to the third
Quarterly Progress
Meeting of the Biennial
Strategy Review System!





Quarterly Progress Meetings

Healthy Watersheds
Aquatic Life
A Culture of Stewardship
Next-generation Stewards
Water Quality
Climate Change and Resiliency
Local Action



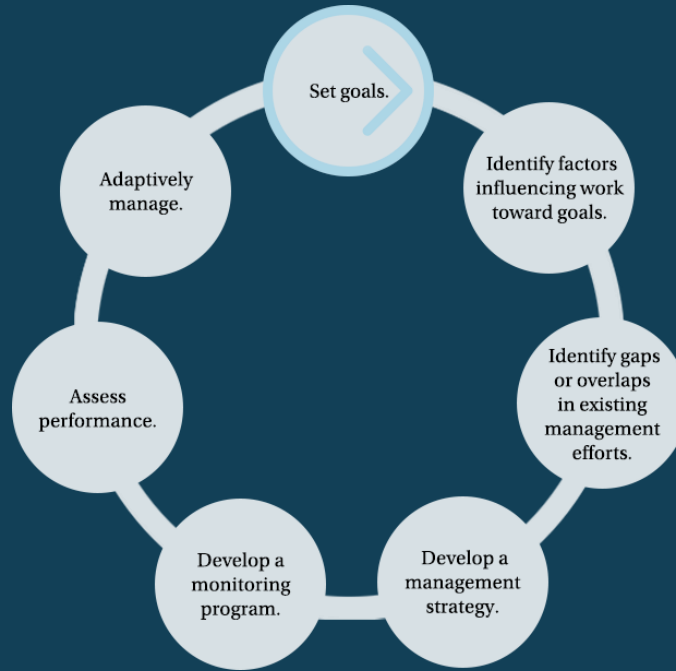
A Culture of Stewardship

**Public Access Site Development
Citizen Stewardship
Diversity**

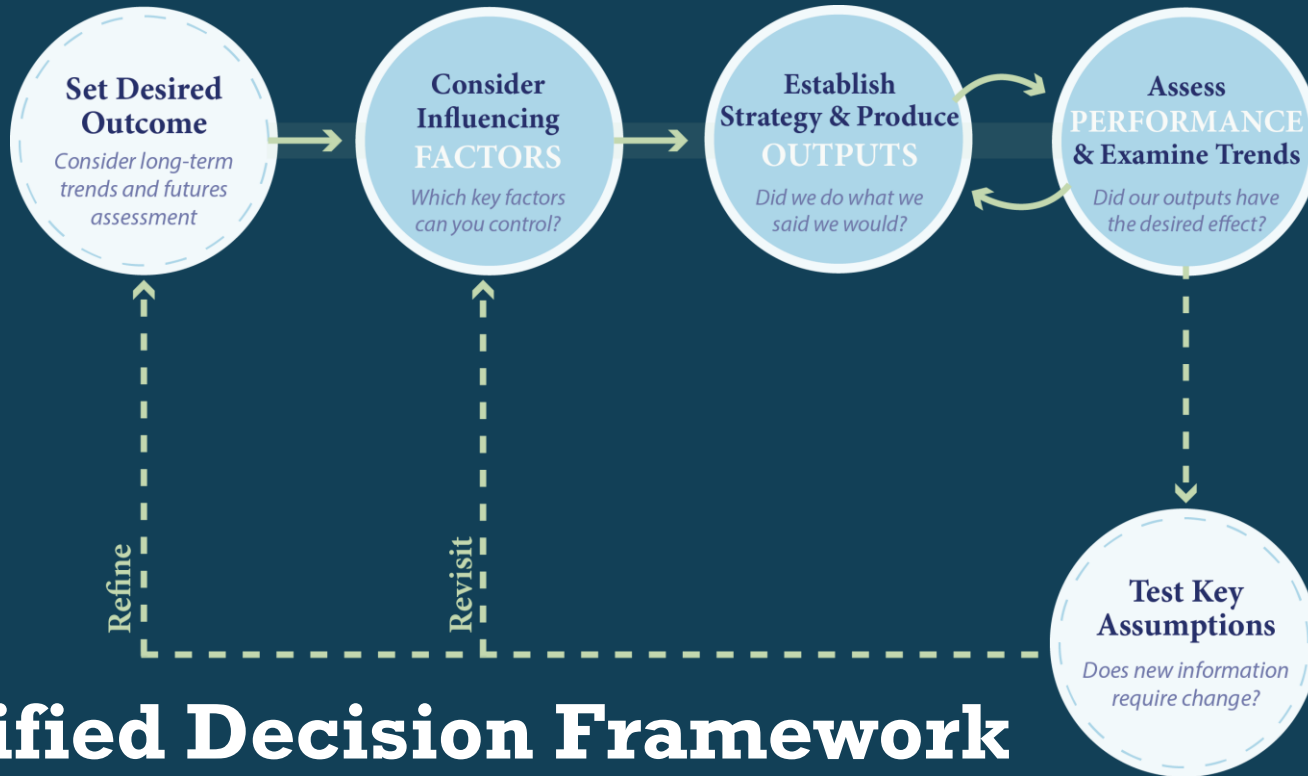


Quarterly Progress Meetings

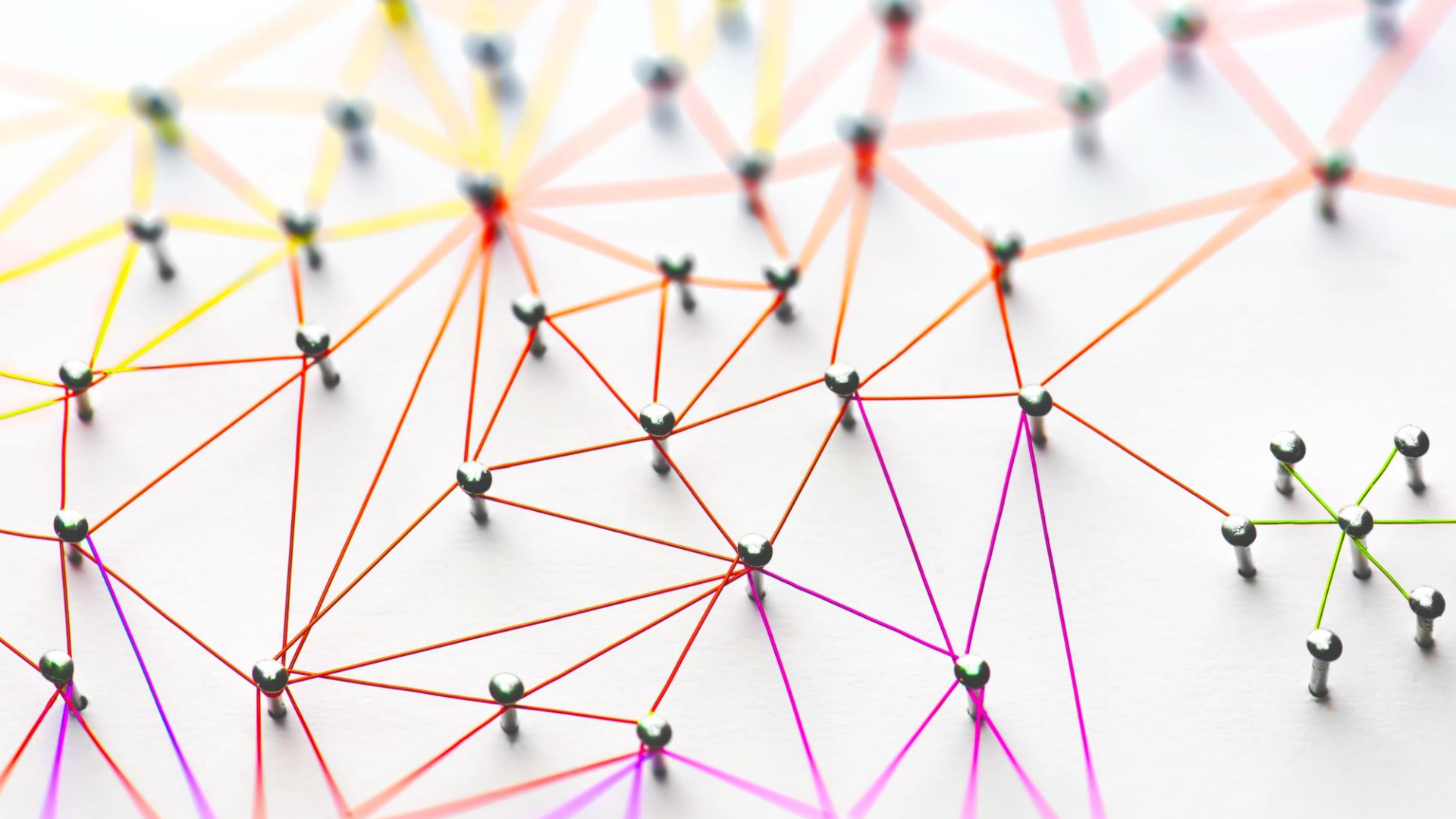
- Review progress
- Apply new opportunities and understandings
- Identify needed changes to approaches and actions
- Support revisions to Work Plans and Management Strategies, as needed



Decision Framework



Simplified Decision Framework







ANACOSTIA WATERSHED SOCIETY

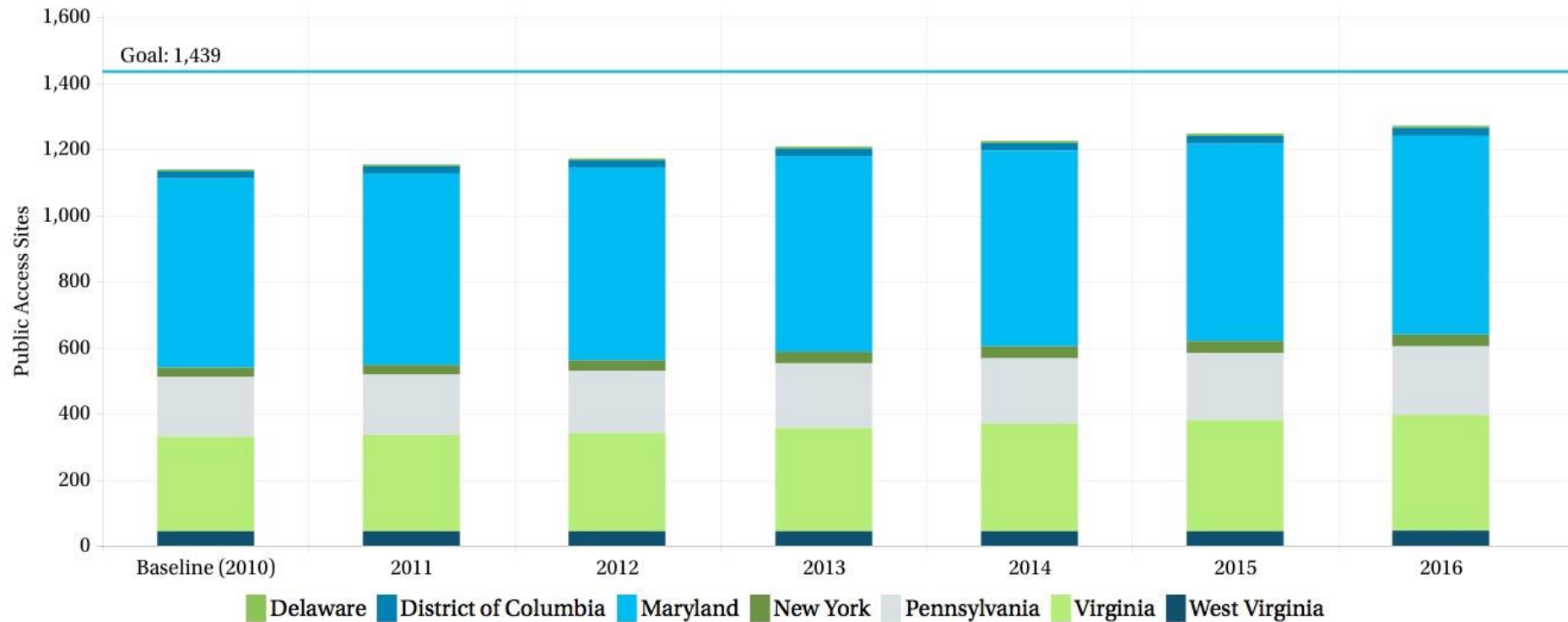


ANACOSTIA WATERSHED SOCIETY

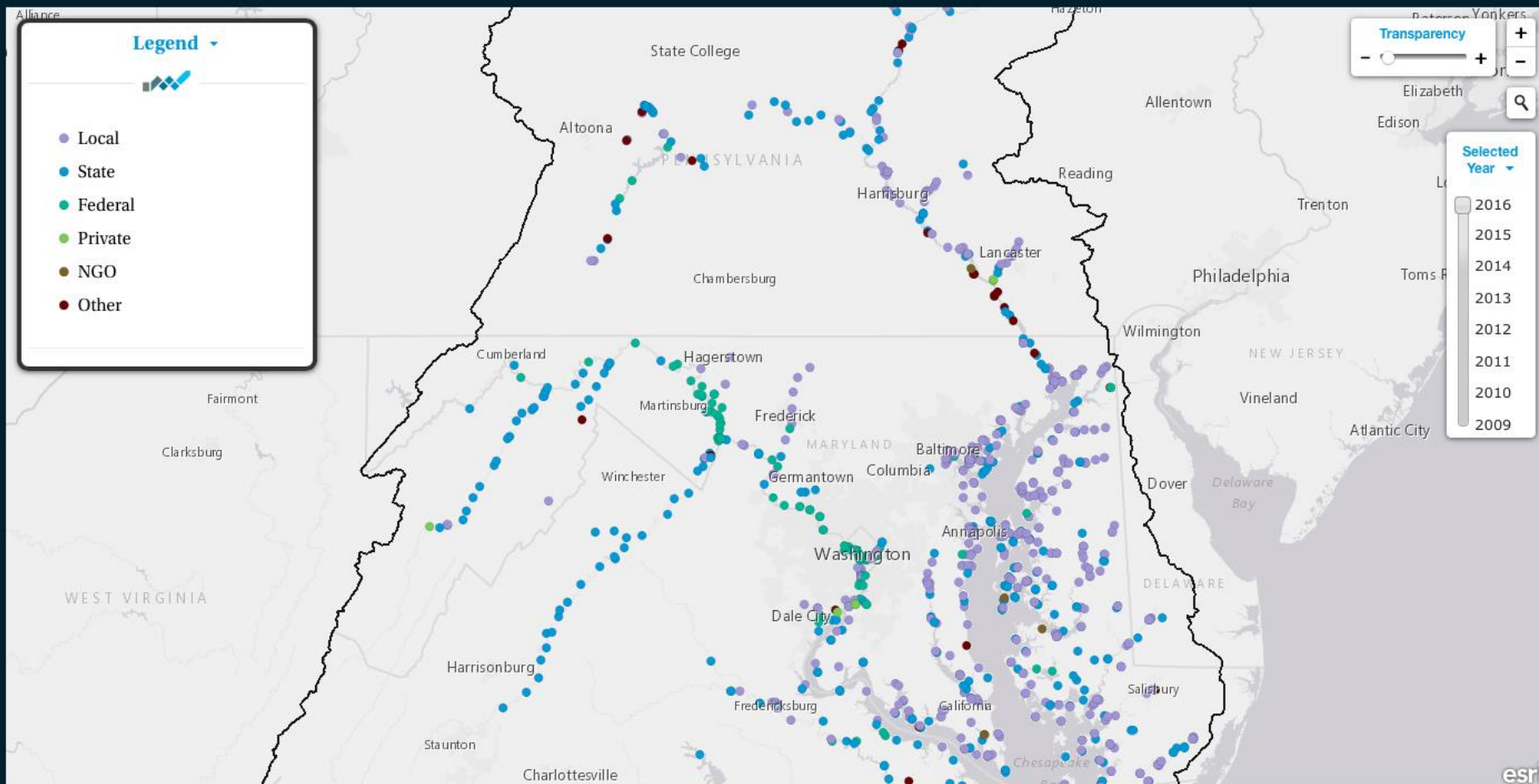


Public Access Sites in the Chesapeake Bay Watershed (2010-2016)

Public Access Sites in the Chesapeake Bay Watershed (2010-2016)



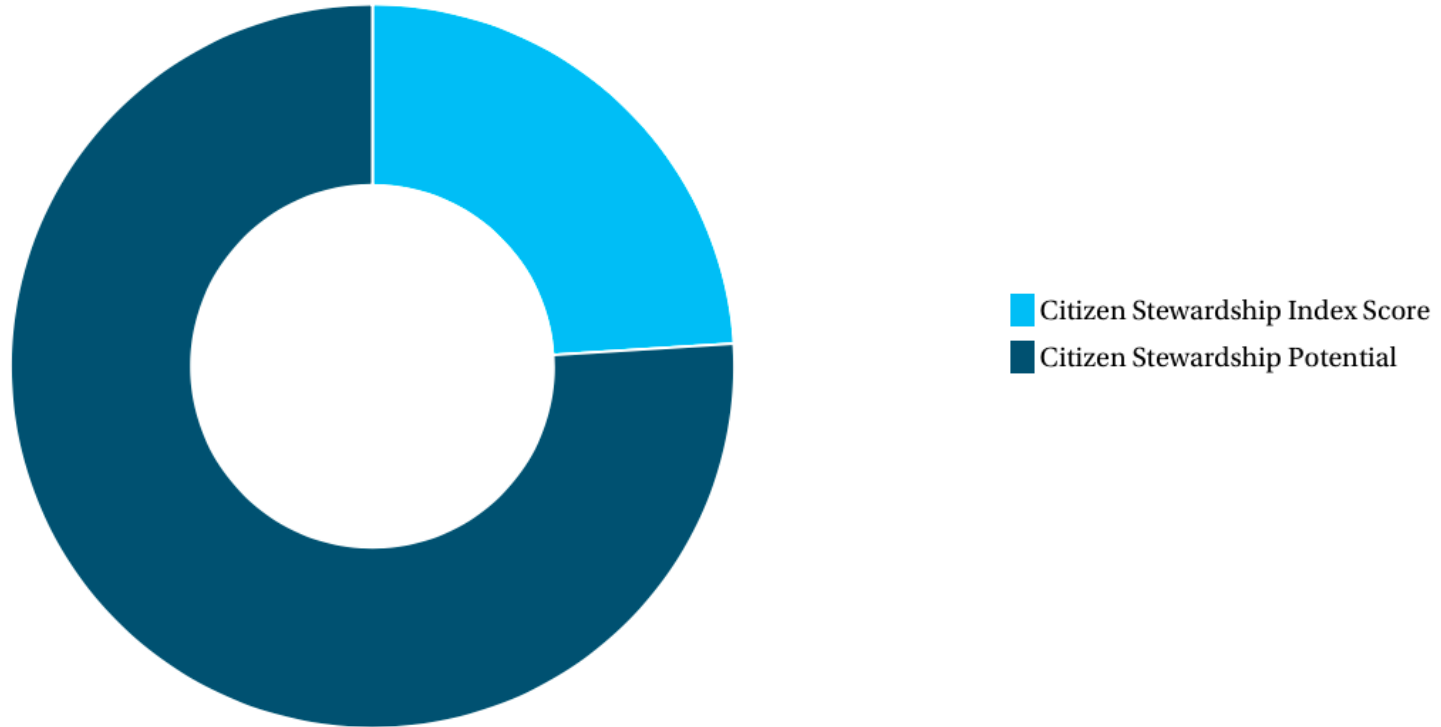
Public Access Site Ownership in the Chesapeake Bay Watershed (2009-2016)





Citizen Stewardship in the Chesapeake Bay Watershed (2017)

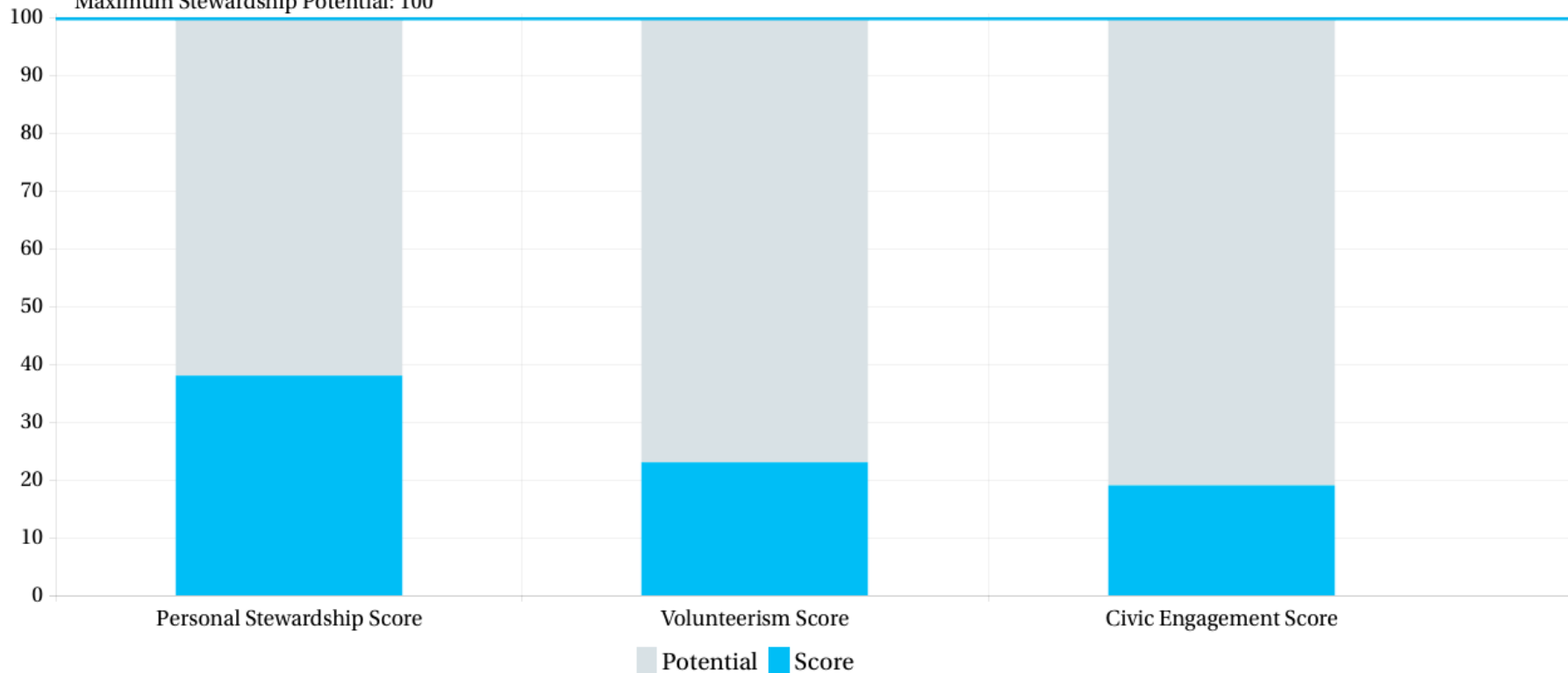
To earn a score of 100, everyone in the region would need to do everything they could in their daily lives to improve water quality and environmental health, including personal actions, volunteering and advocating for the environment.



Personal Stewardship, Volunteerism and Civic Engagement in the Chesapeake Bay Watershed (2017)

These three scores are aggregated to inform the Citizen Stewardship Index.

Maximum Stewardship Potential: 100





Levels of Involvement

Inform: One way street, told what's happening

Ask: Give options; gives information to help others make decisions; provides feedback

Consult: Provides feedback; approach seeking approval; option to get involved

Participate: Bought-in; help strategies and/or promote

Collaborate: Shares ownership of project; formal role; allows others to take a leadership role

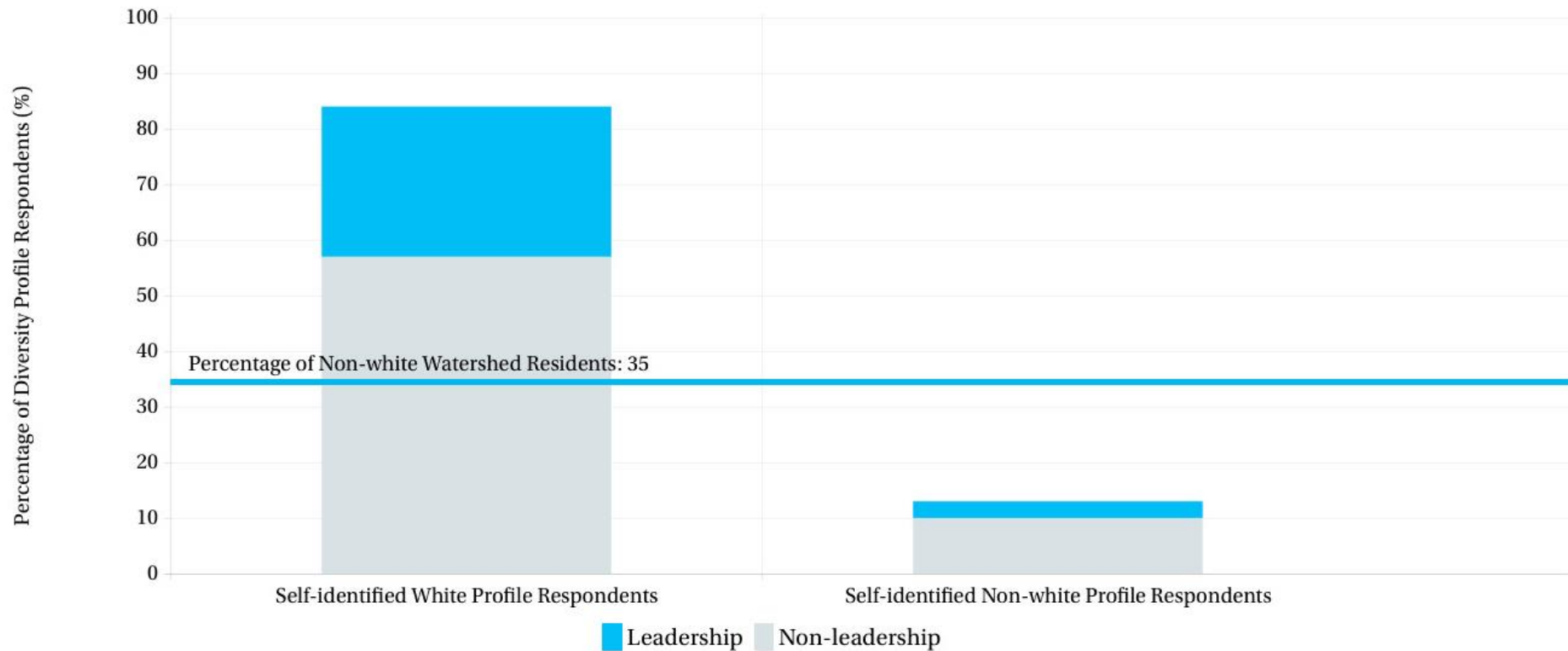
Awareness

Engagement

Partnership



Chesapeake Bay Program Diversity Profile, 2016



Several common factors
could affect our progress
toward these outcomes.





Influencing Factors

Funding









Influencing Factors

Partner Coordination



Bay Wise



DEMONSTRATION LANDSCAPE

Landscape practices for a healthy Chesapeake Bay

Plant and maintain BayScapes

Inquire within or call the
Maryland Cooperative Extension
Home and Garden Information Center

1-800-342-2507



Certified
In 2003





Influencing Factors

Public Engagement









Thanks!

Find us at

free.laura@epa.gov

ckrikstan@chesapeakebay.net

Presentation template by SlidesCarnival. Photos by Chesapeake Bay Program and Shutterstock.