

Two Topics to Address at Management Board:

*(1) Miles opened reporting*

*(2) As a result of the miles opened reporting change, is there a need to modify the outcome?*

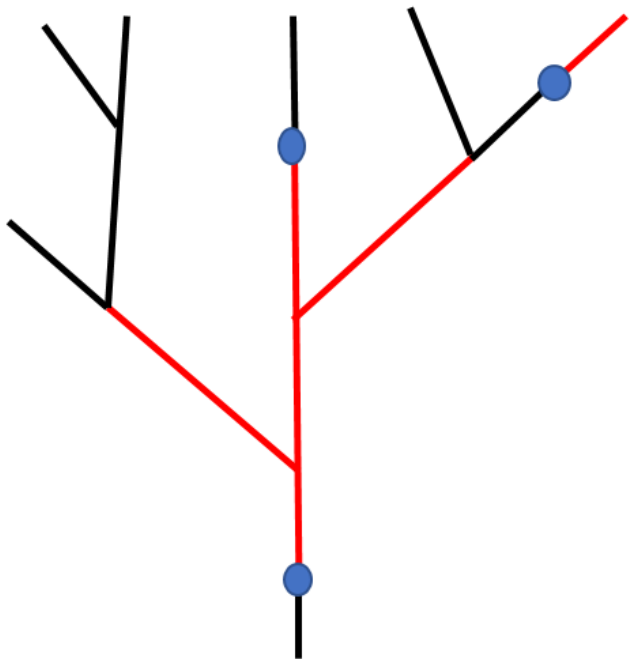
*Through the Chesapeake Bay Watershed Agreement, the Chesapeake Bay Program has committed to...*

### *Goal: Vital Habitats – Fish Passage*

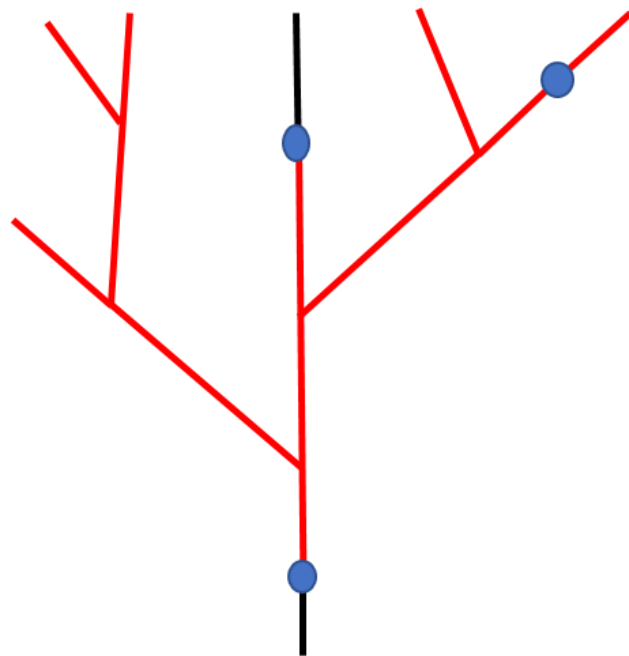
#### **Outcome:**

Continually increase available habitat to support sustainable migratory fish populations in Chesapeake Bay freshwater rivers and streams. By 2025, restore historical fish migratory routes by **opening 1,000 additional stream miles**, with restoration success indicated by the consistent **presence of alewife, blueback herring, American shad, hickory shad, American eel and brook trout**, to be monitored in accordance with available agency resources and collaboratively developed methods.

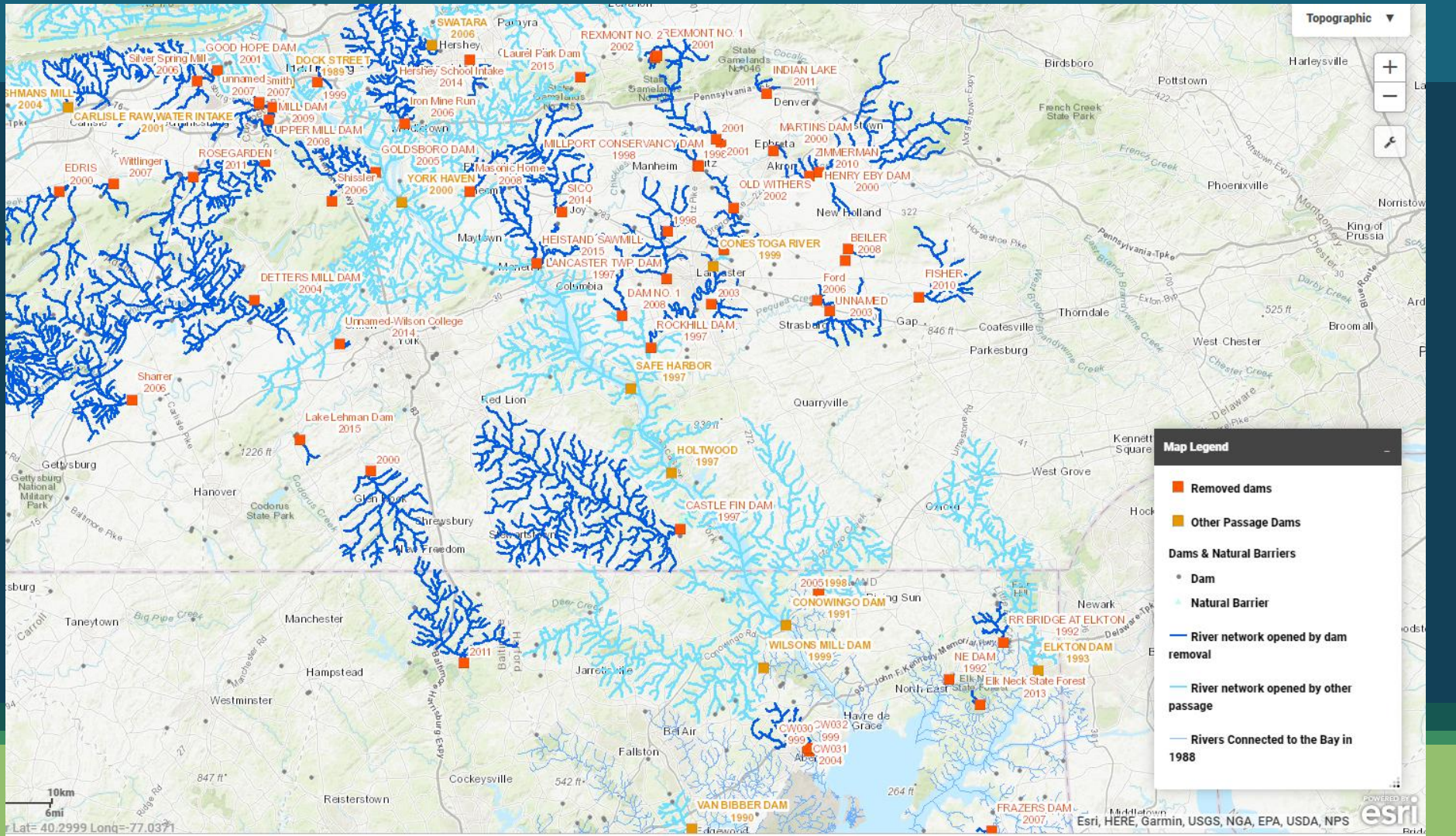




**Old method of calculation**



**Fish passage prioritization tool**





# Rationale

- Brook trout and American eel use upstream habitat in addition to mainstem miles.
- Developed by TNC in partnership with FP community and partially funded by the Chesapeake Bay Program measures functional network mileage in a consistent and precise way across projects
- Allows for consistent record keeping and prevents data loss, avoiding pitfalls of previous methods.
- Workgroup can graphically show where fish passage efforts have been successful and where additional efforts are needed.
- The Fish Passage experts have agreed the Fish Passage Prioritization Tool is far superior to previous methods

*Through the Chesapeake Bay Watershed Agreement, the Chesapeake Bay Program has committed to...*

### *Goal: Vital Habitats – Fish Passage*

#### *Outcome:*

Continually increase available habitat to support sustainable migratory fish populations in Chesapeake Bay freshwater rivers and streams. By 2025, restore historical fish migratory routes **at a rate of opening 132 miles every two years**, with restoration success indicated by the **presence of alewife, blueback herring, American shad, hickory shad, American eel and brook trout**, to be monitored in accordance with available agency resources and collaboratively developed methods.



## Rationale

- Rate has been approved by the Fish Passage Workgroup. It has been included in previous work plans and was the rate used in the Chesapeake Bay Executive Order
- Compliments the new work plan that focuses on incentive programs for dam removal and fish passage projects. Increased rate of miles opened shows progress made by these actions
- Given no process in 2014 for changing an outcome, the rate has been in use for several years from the working group perspective



## Help Needed

- Bring awareness to dam safety programs that dam removal is a viable option to consider along with the usual “repair or replace” options under dam safety regulations and planning.
- PA – excellent job! Model coordination
- MD – stalled with new leadership pending at DNR and MDE. Need renewed emphasis on these talks.
- VA – staff from dam safety to attend VA Fish Passage Task Force Meetings