

# Planning Target Methodology

Management Board Meeting

November 17, 2016

James Davis-Martin, WQGIT Chair

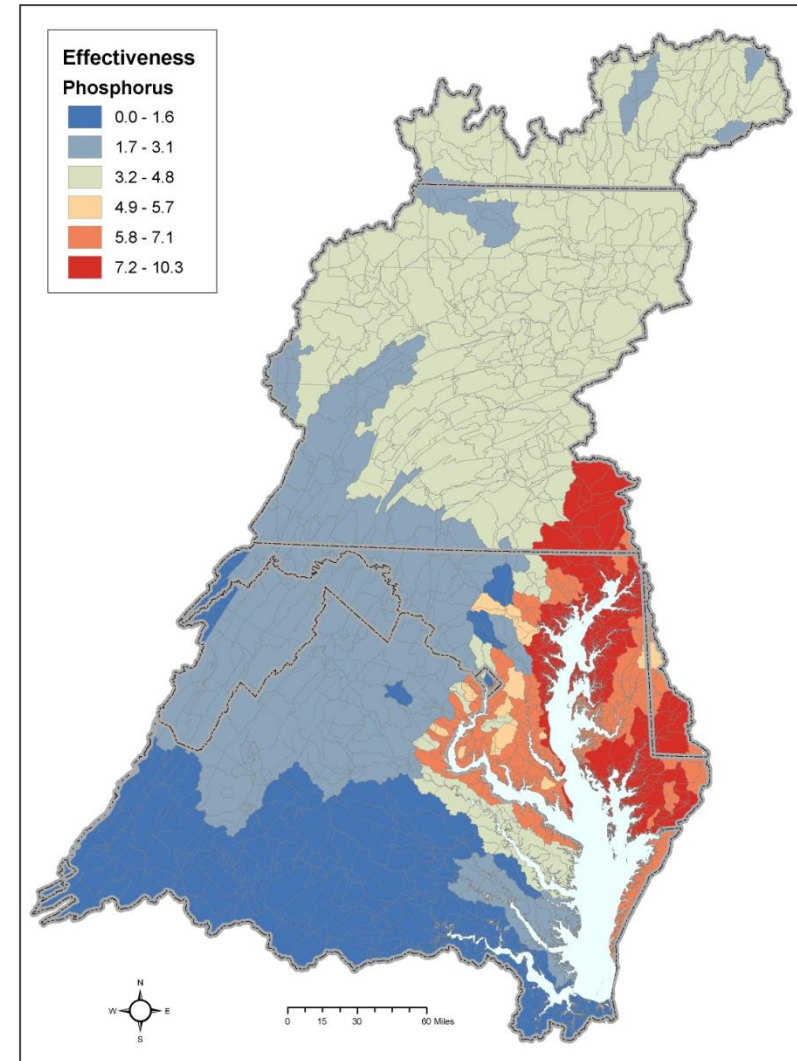
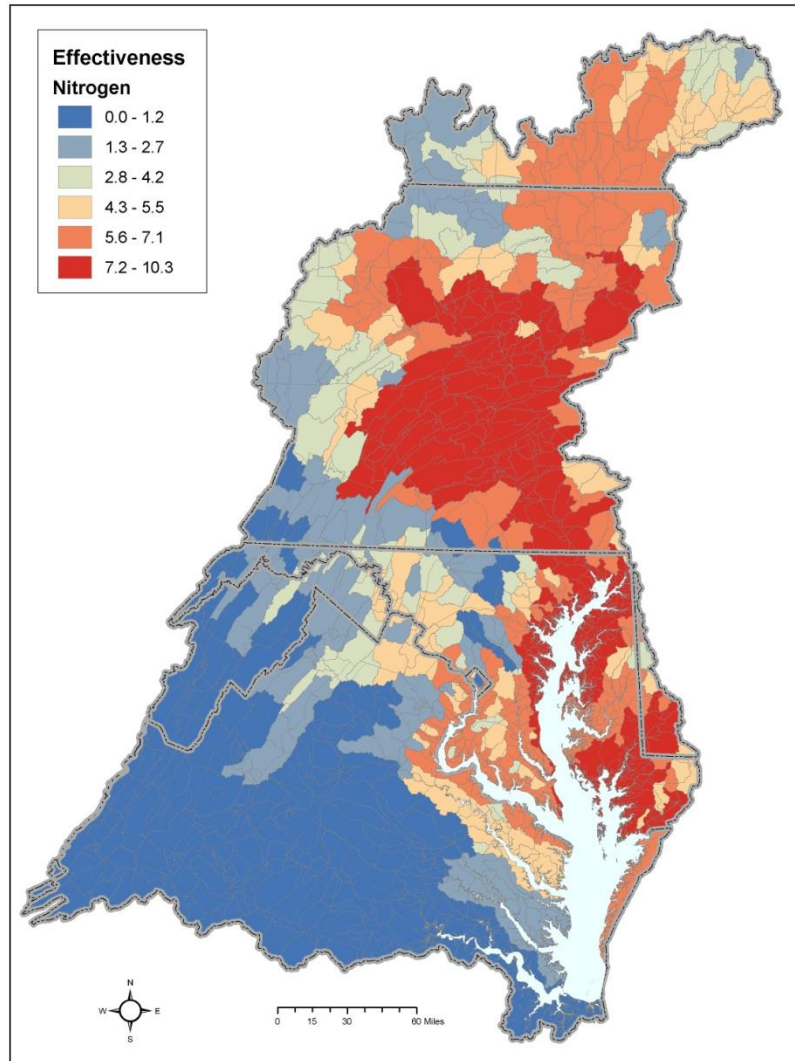
# Management Board Decision Requested

Agreement on WQGIT's recommendations regarding the proposed Phase III WIP planning targets methodology

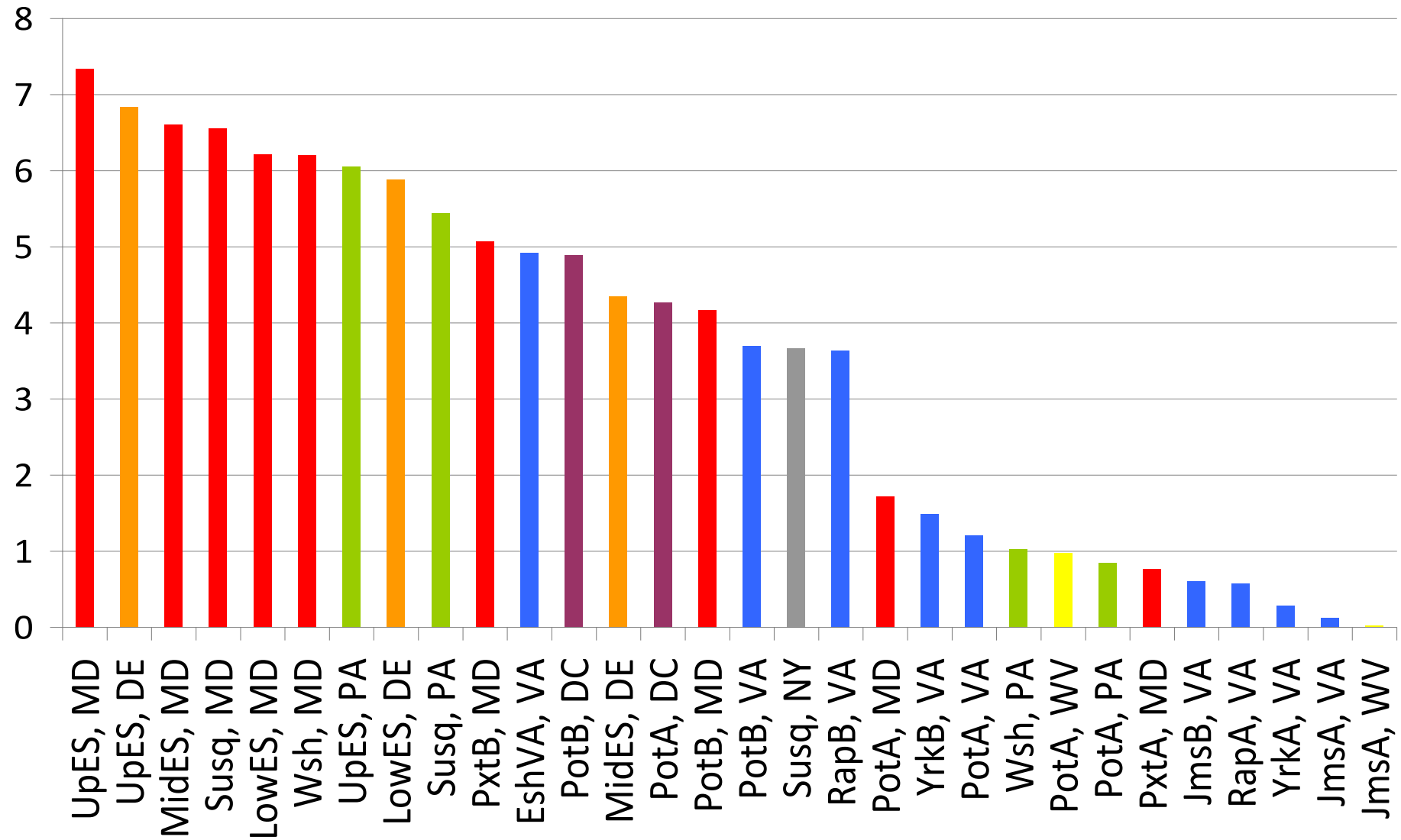
# Components of the Previous Method

- Plot effectiveness vs percent effort
- Set upper half of WWTP lines at 4.5 N, 0.22 P mg/l equivalents; intercept at 8 N, 0.54 P mg/l equivalents
- Most effective basin is 20 percentage points higher than least effective for 'all other' line
- Special cases

# Relative Effect of a Pound of Pollution on Bay Water Quality



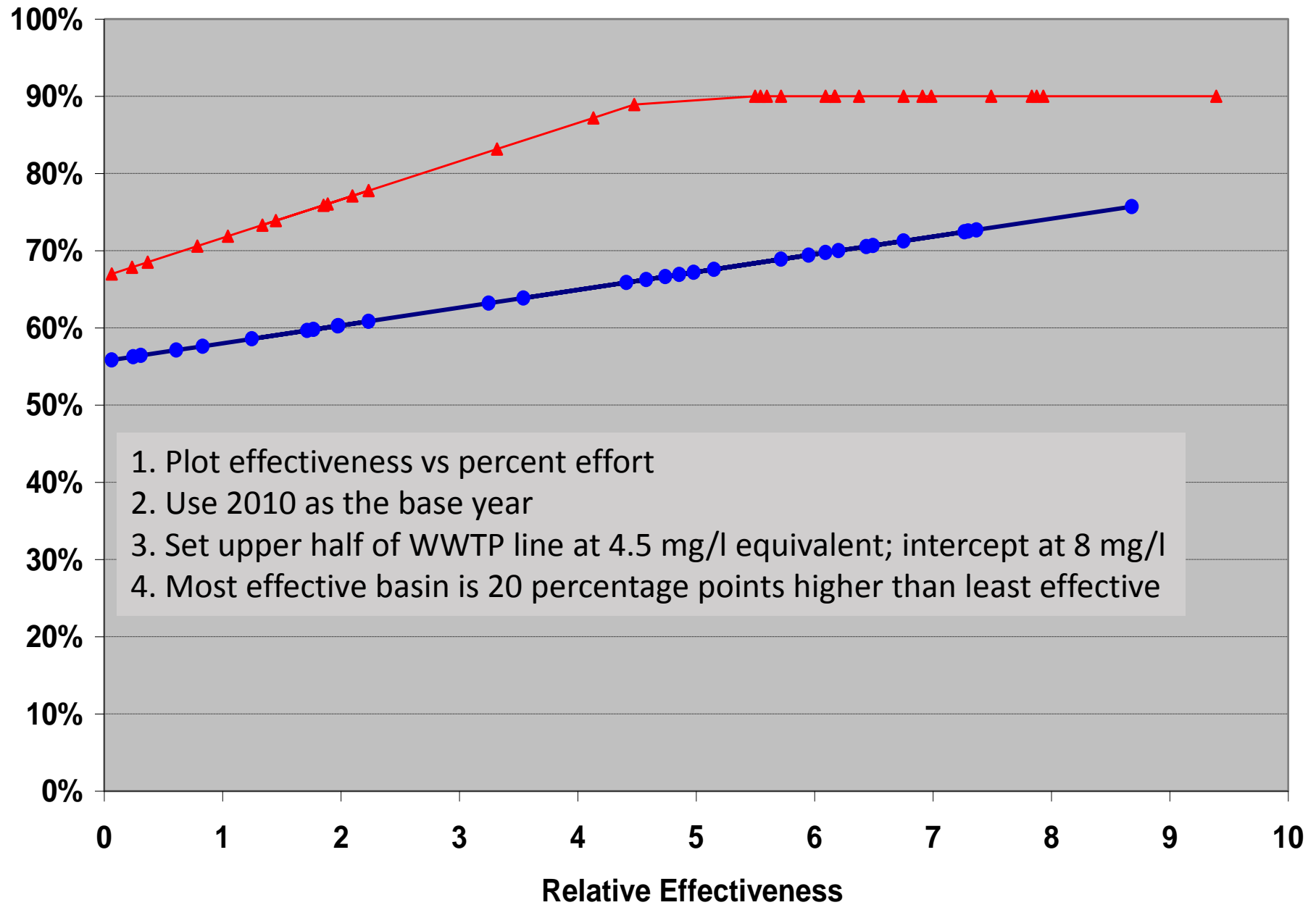
Major River Basin by Jurisdiction Relative Impact on Bay Water Quality



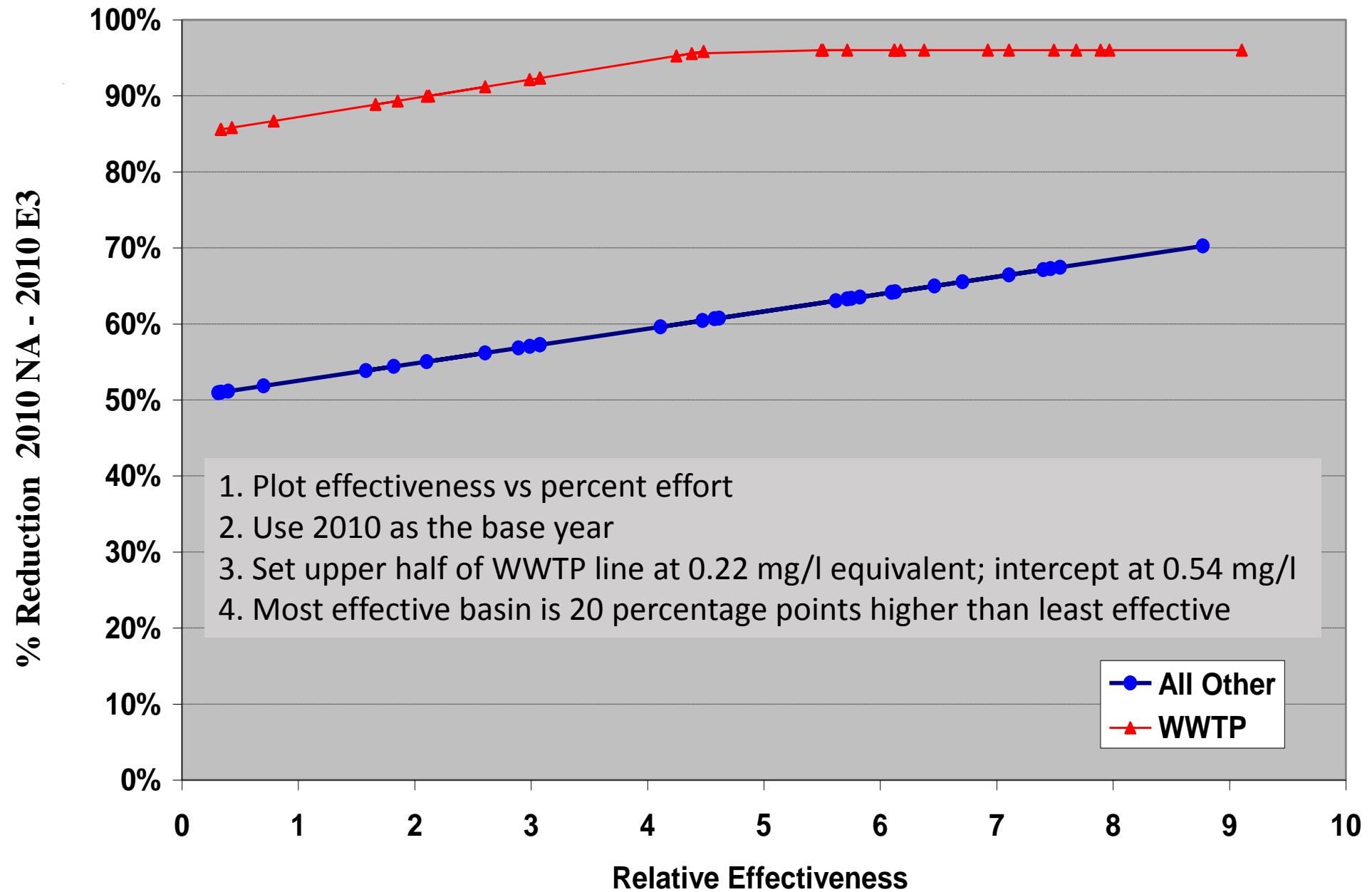
% Reduction 2010 NA - 2010 E3

### Nitrogen -- Phase 5.3 -- Goal=190

● All Other  
▲ WWTP

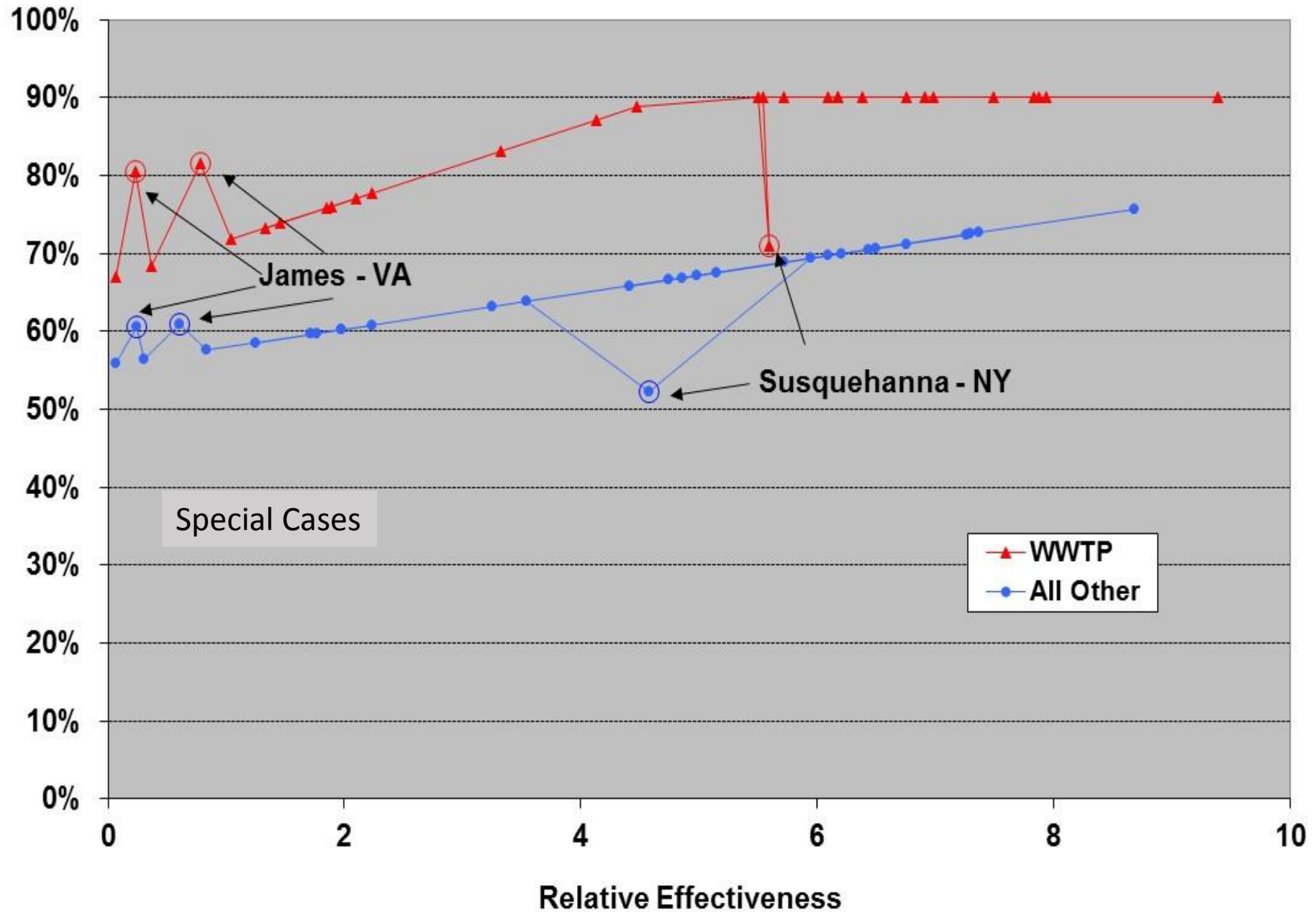


TP, p5.3, goal=12.67 WWTP = .22 - .54 mg/l, other: max=min+20%,



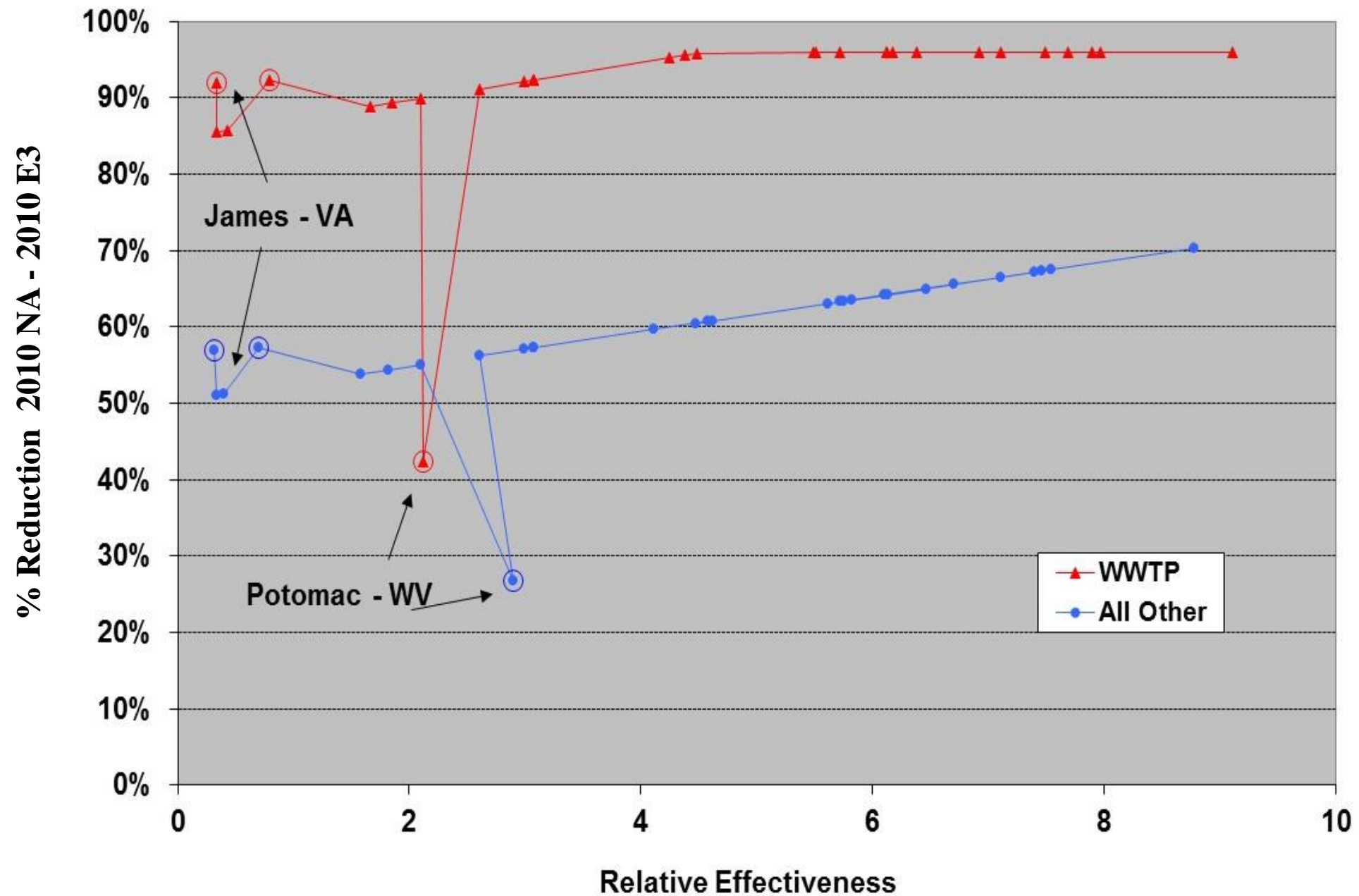
# Nitrogen -- Phase 5.3 -- Goal=190

% Reduction 2010 NA - 2010 E3





TP, p5.3, goal=13 WWTP = .22 - .54 mg/l, other: max=min+20%,



# WQGIT Recommendations

- Apply the same methodological approach to establishing the Phase III WIP planning targets as was used by the partners in the development of the jurisdictions' major river basin allocations under the 2010 Chesapeake Bay TMDL.
- Recognize the need to update the No Action and Everything by Everyone Everywhere (E3) scenarios as well as estimates of relative effectiveness to reflect the Partnership's suite of Phase 6 models and greatly expanded list of Partnership-approved BMPs.
  - Updated E3 scenarios received WQGIT approval on 10/25/16.

# WQGIT Recommendations

- Continue to make allowances for special cases and consideration of special circumstances.
  - For example, those provided to New York, West Virginia and Virginia's James under the original set of 2010 Chesapeake Bay TMDL decision rules, during the Partnership's development of Phase III WIP planning targets.
  - These adjustments are intended to allow for adjustments to the allocation methodology necessary to meet local WQ standards or to ensure the partnership's principals of equity and fairness are met.