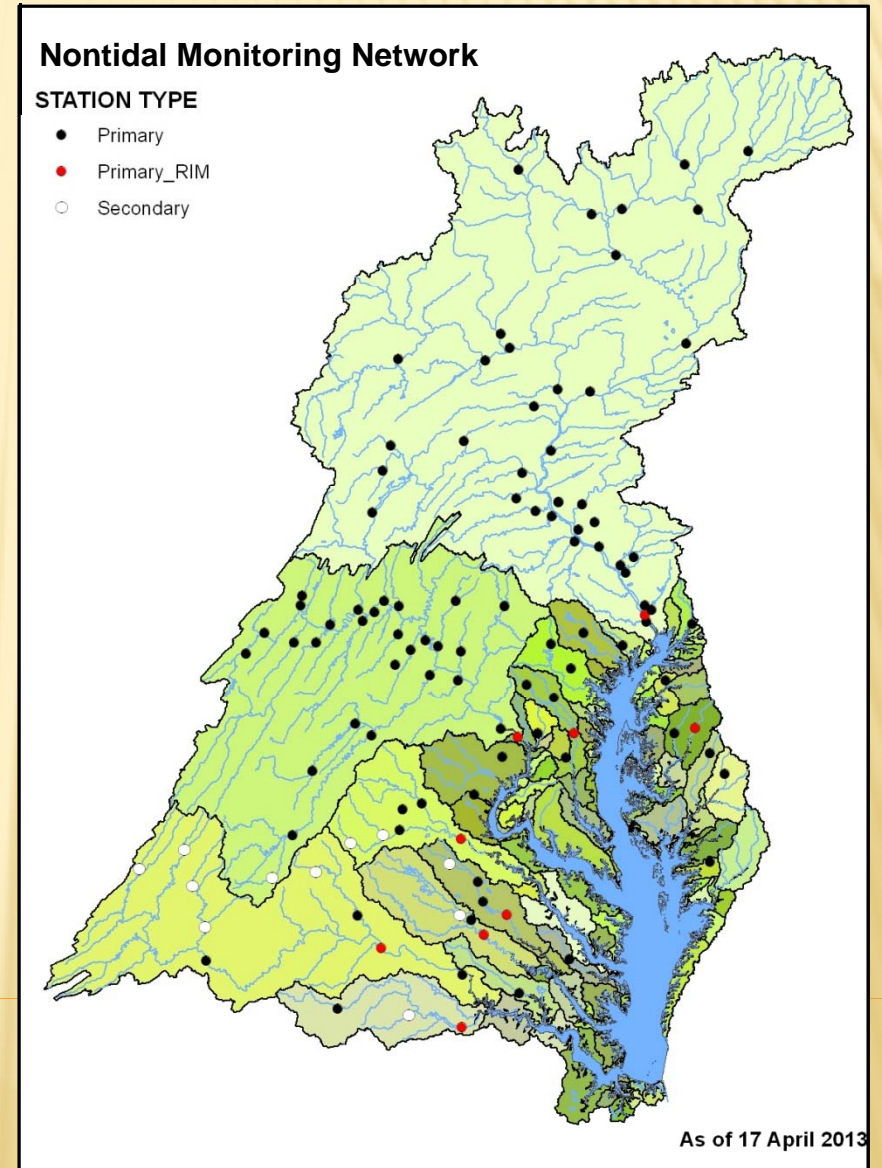


DUET

STATUS OF WY2012 DATA SUBMISSION

Nontidal Water Quality Workgroup
15 May 2013

Mike Mallonee



DUET: CURRENT DATA HOLDINGS

STATE	AGENCY	SOURCE	WATER YEAR	UPLOADED	IMPORTED	EVENTS	tab_DATA	tab_WAREHOUSE
DE	DEDNREC	DEDNREC	WY2012	YES	YES	30	906	957
MD	MDDNR	MDDNR	WY2012	YES	YES	376	7,161	9,016
MD	MDDNR	USGSMD	WY2012	YES		181	1,777	
PA	PADEP	PADEP, SRBC, USGSPA	WY2012	YES	YES	747	15,510	15,510
NY	SRBC	SRBC, NYSDEC	WY2012	YES	YES	87	1,374	1,577
VA	VADEQ	VADEQ/***, USGSVA	WY2012	YES	YES	535	9,651	10,991
WV	USGSWV	USGSWV	WY2012					
				WY2012 TOTAL:		1,956	36,379	38,051
MD	MDDNR	MDDNR	WY2013 (1ST QTR)	YES	YES	99	1,726	2,135
VA	VADEQ	VADEQ/***, USGSVA	WY2013 (1ST QTR)	YES	YES	129	2,327	2,720
				WY2013 TOTAL:		228	4,053	4,855
				DATABASE TOTAL:		2,184	40,432	42,906

FAST (FORMAL, AUTOMATED, STANDARDIZED, AND TIMELY) PROCESS

CBP Nontidal Network Water Year Data Life Cycle and Phases

Water Year	Calendar Year 2011				Calendar Year 2012				Calendar Year 2013				Calendar Year 2014				Calendar Year 2015							
Month:	J	F	M	A	M	J	J	A	S	O	N	D	J	F	M	A	M	J	J	A	S	O	N	D
WY 2012	Planning and preparation				Data collection and review				Upload review transform aggregate data, construct databases	Publish data, to standards	Data Search and Discovery													
WY 2013					Planning and preparation		Data collection and review						Upload review transform aggregate data, construct databases	Publish data, to standards	Data Search and Discovery									
WY 2014							Planning and preparation		Data collection and review						Upload review transform aggregate data, construct databases	Publish data, to standards ¹								

¹ Data Search and Discovery would follow this phase.

ISSUES FOR WY2013 DATA COLLECTION

- ✘ WY2013 Metadata Call (15 May 2013):
 - + Expected Parameters
 - ✘ Stations – new, upgraded or discontinued
 - + Point of Contact
 - + Lab Methods, Detection limits

- Necessary for DUET completeness & calculated parameter routines
- ✘ Implement WY2013 QC Sampling Design
 - + Blanks: 1 field blank/station/year
 - + Duplicates: 2 duplicate pairs/station/year, up to 24 pairs
- ✘ Complete USGS stream gage location mapping (in conjunction with the completed NTN monitoring site mapping).
- ✘ WY2014 Metadata Call: Timing ???