

An aerial photograph of a large body of water, likely a lake or bay, with several small, forested islands. Numerous sailboats are visible on the water, particularly in the lower right quadrant. The water is a deep blue, and the surrounding land is covered in dense green trees. The overall scene is peaceful and scenic.

# **EPA's Expectations for 2015 Milestone Commitments: Review of Past Expectations**

Presentation to the Milestones Workgroup

Nita Sylvester and Katherine Antos

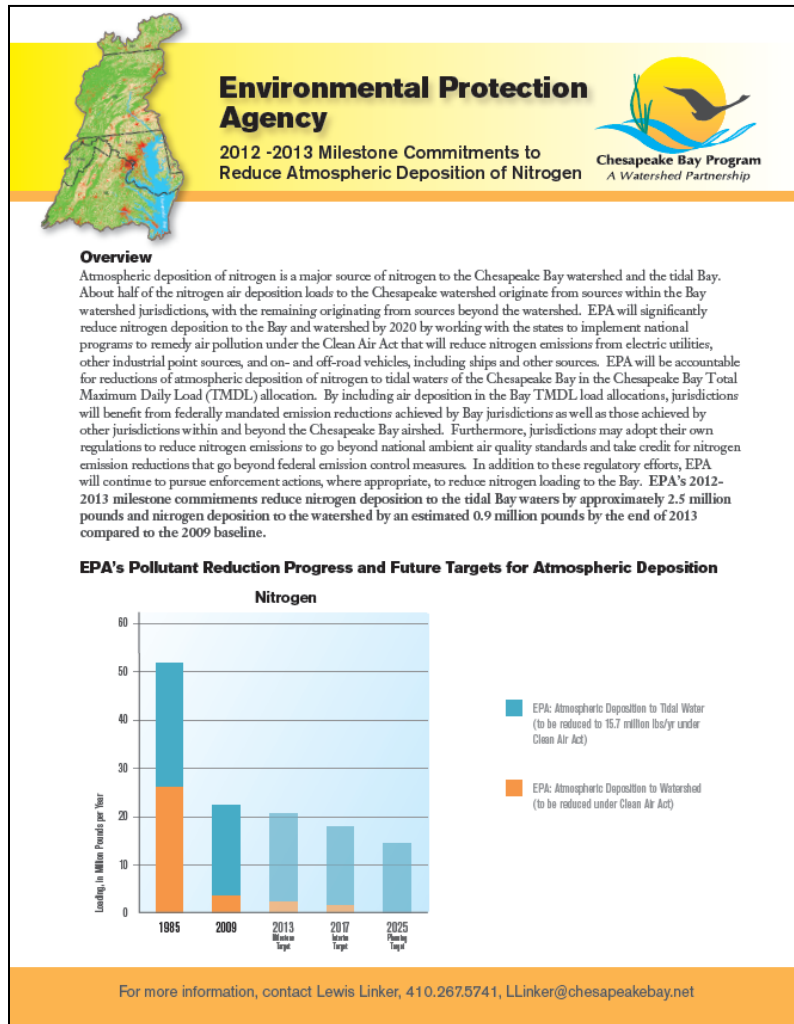
June 25, 2013

# Who Is the Lead?

Deliverable	Proposed Lead
Midpoint Assessment Priorities	Water Quality Goal Implementation Team (WQGIT)
Midpoint Assessment Guiding Principles	Principles' Staff Committee, with input from WQGIT and Management Board
Midpoint Assessment Deliverables	CBP Partnership. Specific roles for Workgroups, Modeling Team, etc.
2-Year Milestones	Bay Jurisdictions, Federal Agencies
Phase III Watershed Implementation Plans	Bay Jurisdictions, with input from local partners
Evaluation & Oversight of WIPs and Milestones	U.S. Environmental Protection Agency
Any Possible Revisions to Bay TMDL	U.S. Environmental Protection Agency

*Note: Partnership members in addition to the lead may contribute to deliverables*

# EPA's Oversight Role

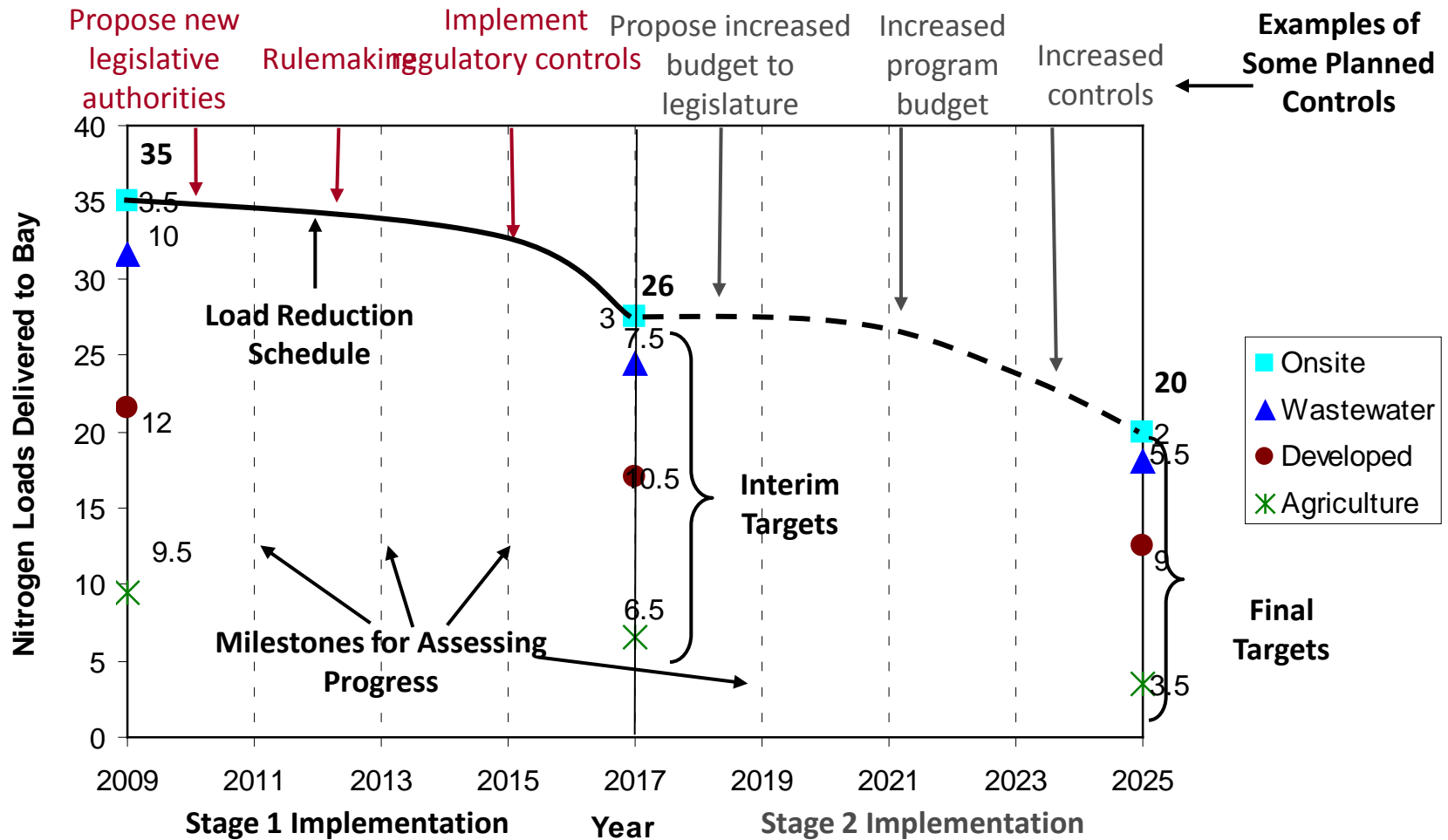


- Coordinate Federal Facilities Team to communicate clear expectations
- Senior level discussions, as needed, to review progress
- Annual evaluation of numeric and programmatic milestone commitments and progress
  - Odd years: Interim progress
  - Even years: Previous milestone results, future commitments
  - Share with public

# Expectation for 2-Year Milestones

	Commitments	Results
<b>Numeric</b>	<ul style="list-style-type: none"><li>• Estimated load reductions that will result from BMP implementation</li><li>• Based on CBP model analysis</li><li>• Requires “input deck” submission</li></ul>	<ul style="list-style-type: none"><li>• Load reductions that occurred as a result of BMP implementation</li><li>• Based on CBP model analysis</li><li>• Requires “input deck” submission</li></ul>
<b>Programmatic</b>	<ul style="list-style-type: none"><li>• Enhancements to water quality programs that will occur in next 2 years</li><li>• Could include new plans, policies, audits, permit-compliance activities or capacity-building actions</li></ul>	<ul style="list-style-type: none"><li>• Report out on whether programmatic commitments occurred</li><li>• Include any changes to programmatic actions</li></ul>

# Staged Implementation



# Proposed Schedule for Milestone and Progress Submissions

Deliverable	Federal Agencies	Jurisdiction
Progress Input Deck	<b>October 1</b> (proposed; previously November 1 in Milestone Guide)	<b>December 1</b> starting 2013 based on grant guidance (previously December 31)
Programmatic Progress	<b>January 15</b> (proposed; previously March 31 in Milestone Guide)	<b>January 15</b> (proposed; December 31 in grant guidance)
Draft Milestone Input Deck and Programmatic Commitments	<b>December 1</b> (proposed; previously October 1 in Milestone Guide)	<b>Mid-January</b> (proposed; previously November 1 in Milestone Guide)*
Final Milestone Input Deck and Programmatic Commitments	<b>January 7</b> (Milestone Guide)	<b>Mid-March</b> (proposed; previously January 7 in Milestone Guide)*

\* May due away with “draft” milestones, and just have “final” milestones with an opportunity to revise based on EPA comments and progress run results.