

Modeling Team Priorities for 2019

Gary Shenk CBPO

...along with the whole modeling team and modeling workgroup

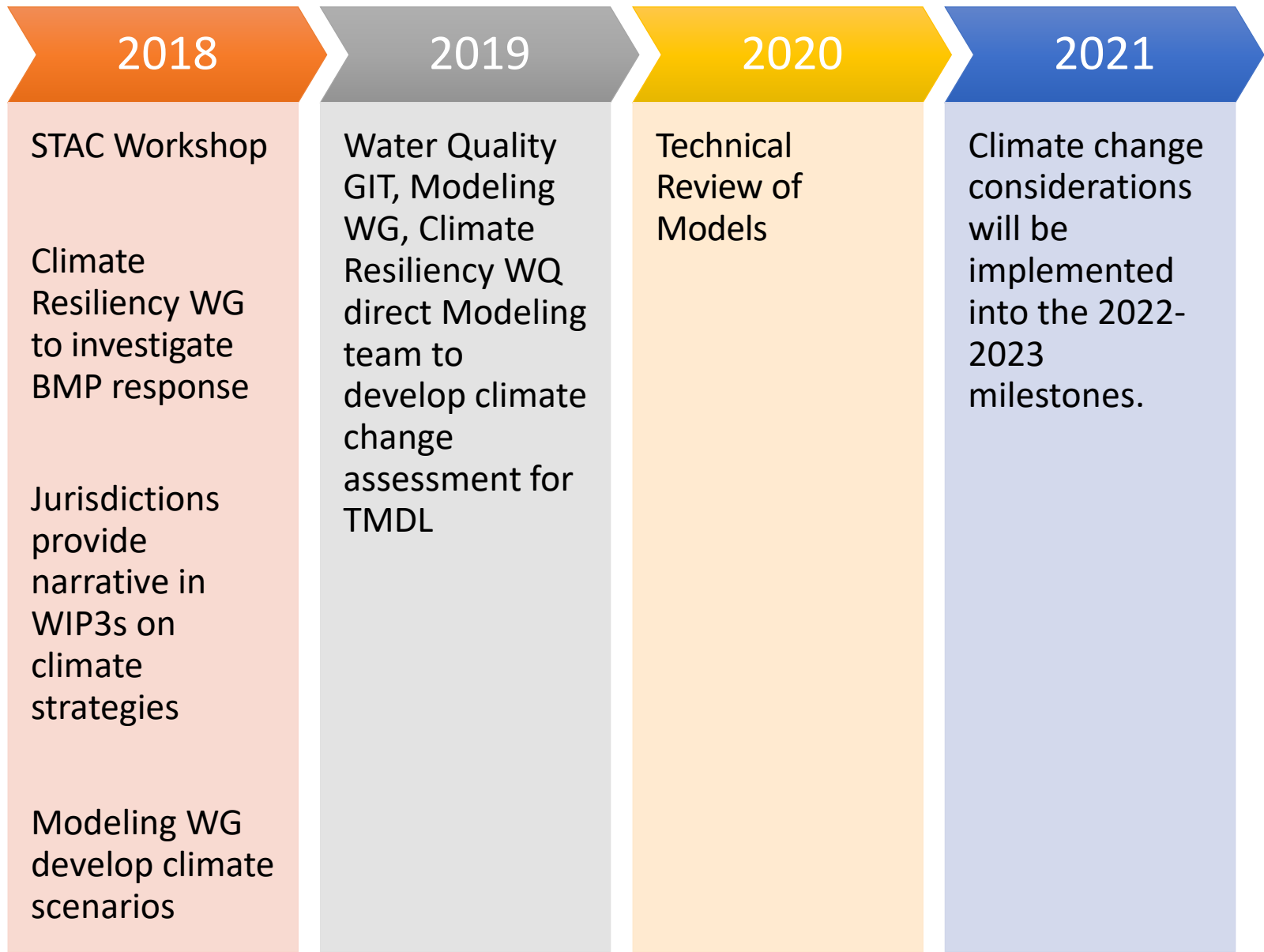
4/2/2019

Modeling Team Priorities for 2019

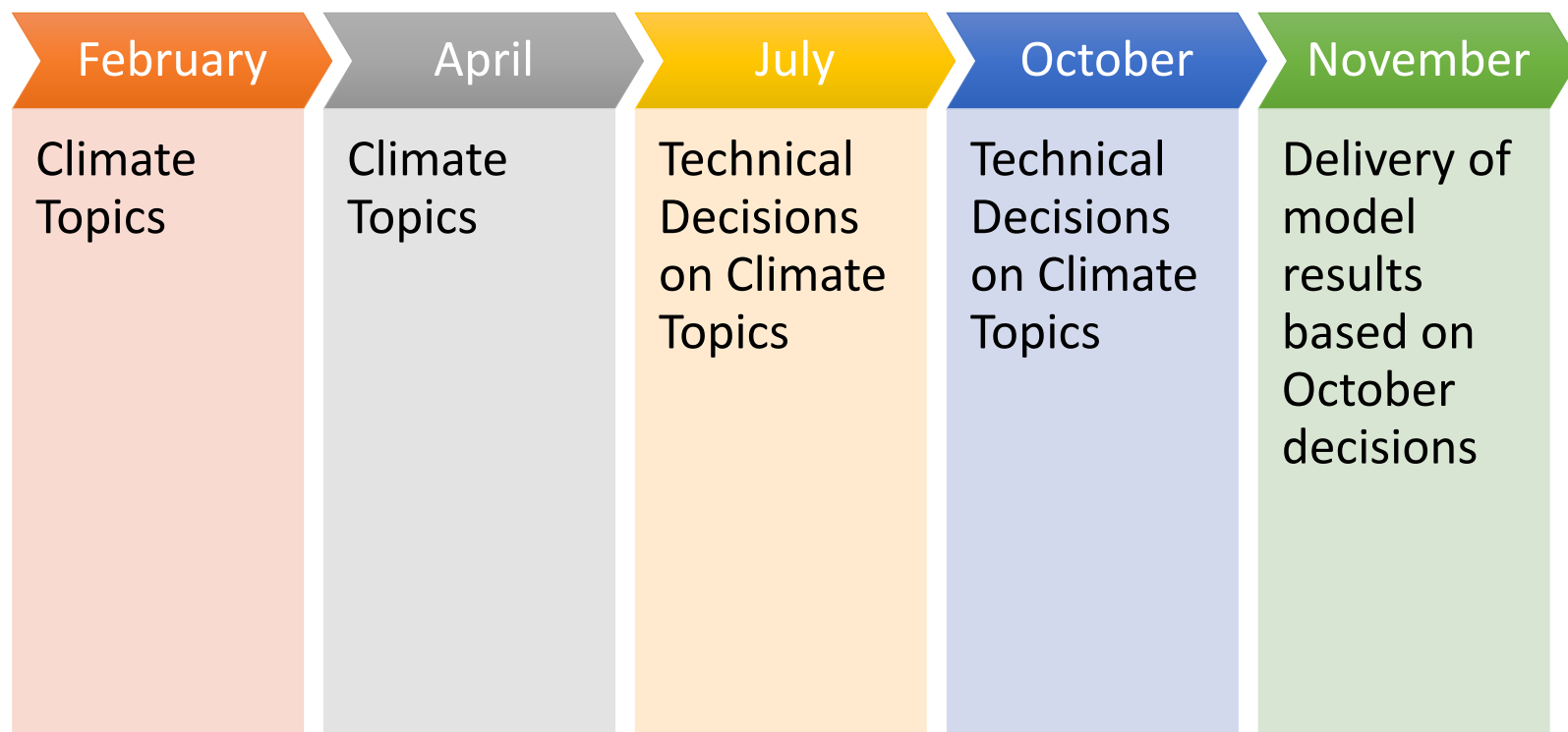
- Climate Change
- Documentation
- WIP support
- James CHLA
- Technology Transfer
- Other collaborative work

- Long-Range
 - Phase 7
 - Uncertainty quantification

CBP Climate Work Plan



CBP 2019 MWG Climate Work Plan



Climate Effects on Oxygen

Watershed Model

increased precipitation volume =



increased precipitation intensity =



increase in temp and evapotranspiration =



WQ Sediment Transport Model

increased watershed loads =



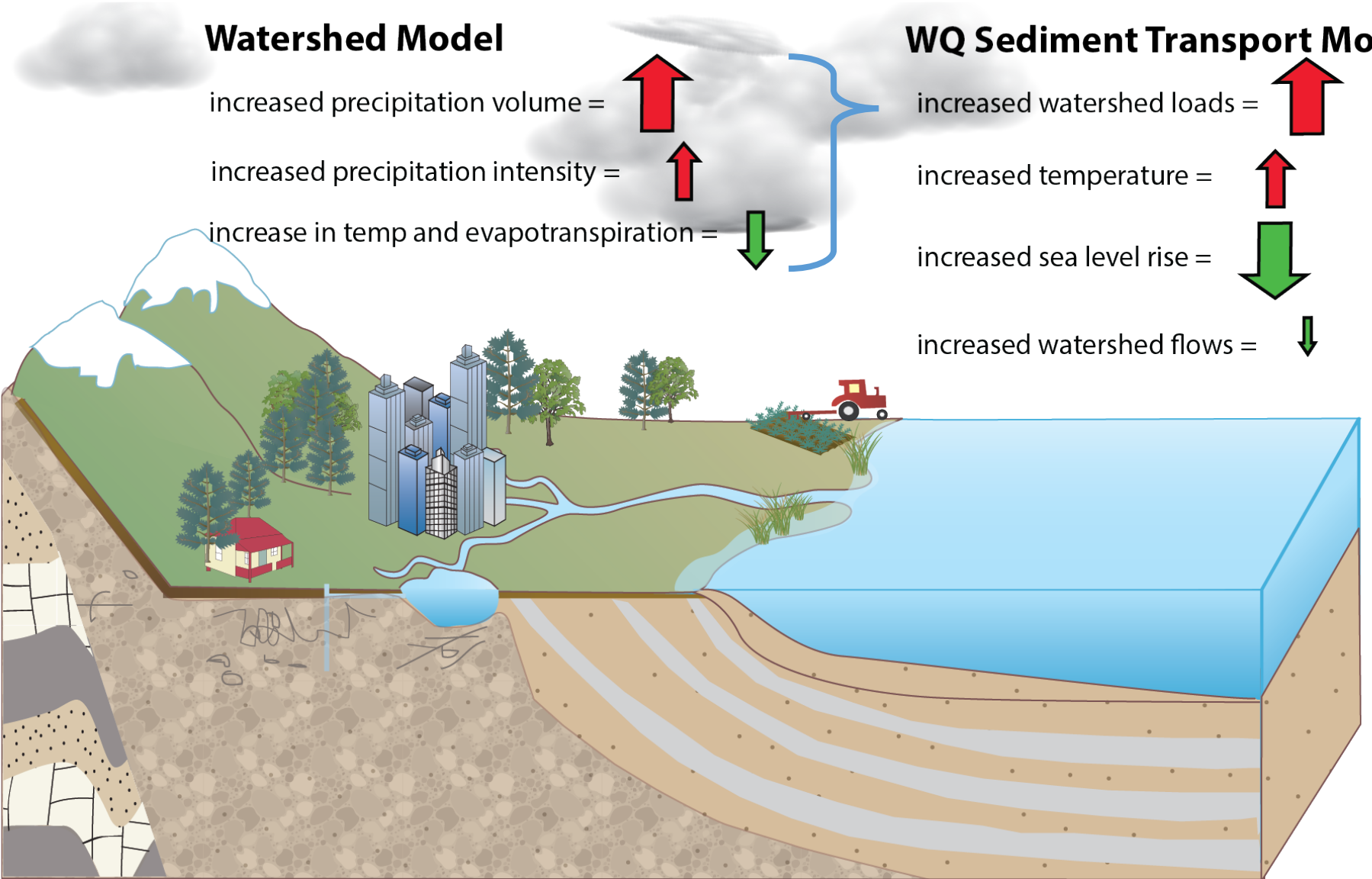
increased temperature =



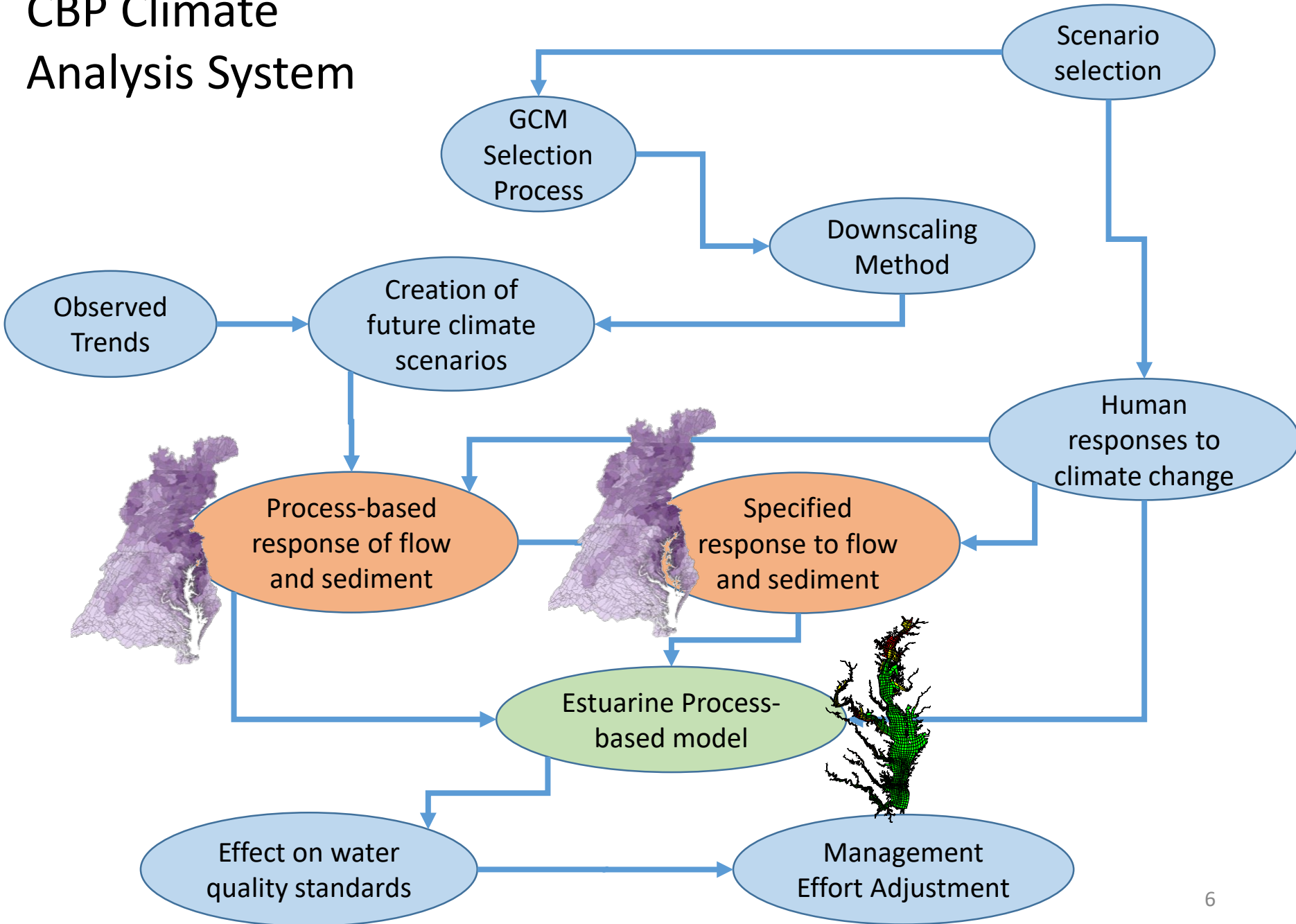
increased sea level rise =



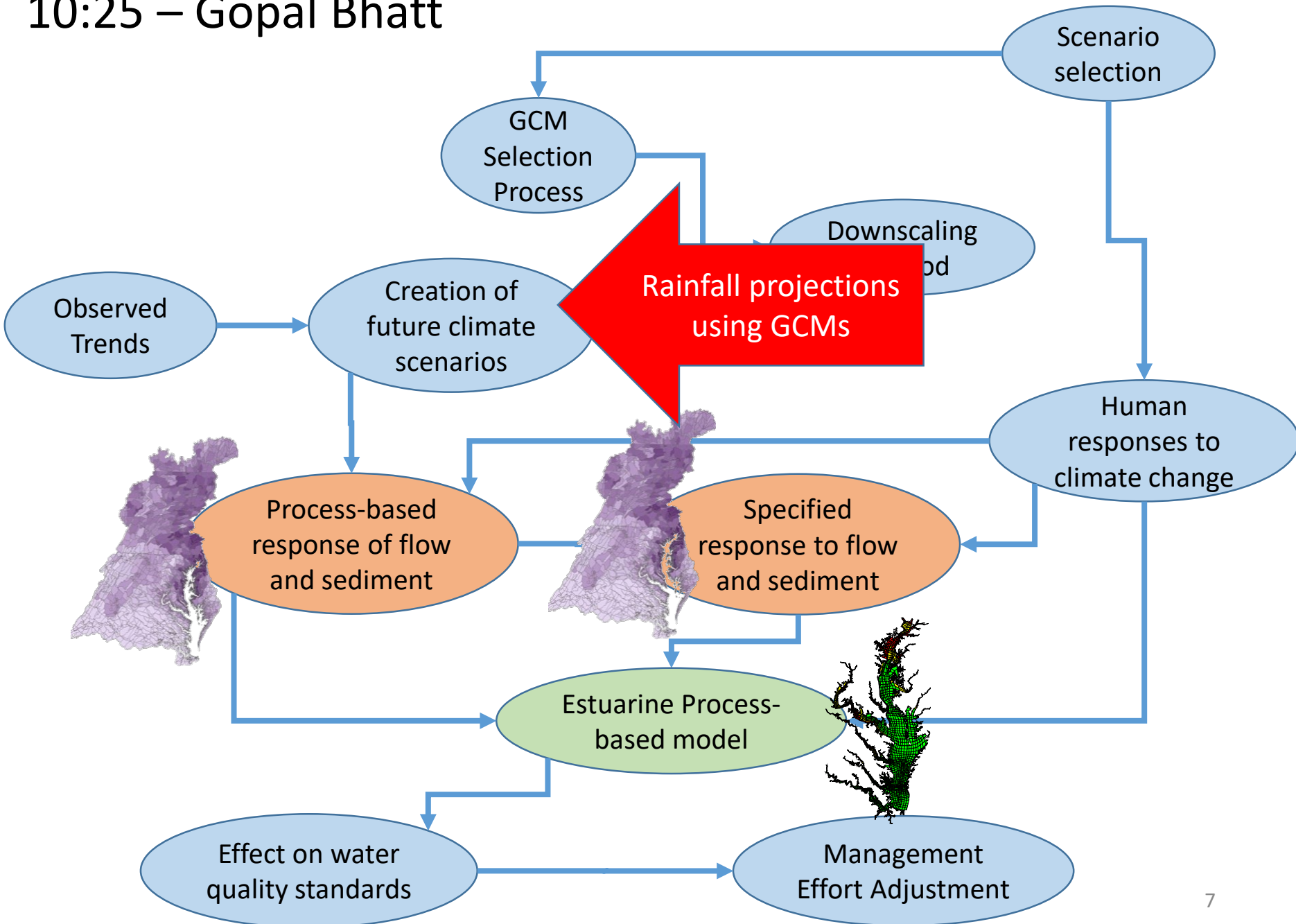
increased watershed flows =



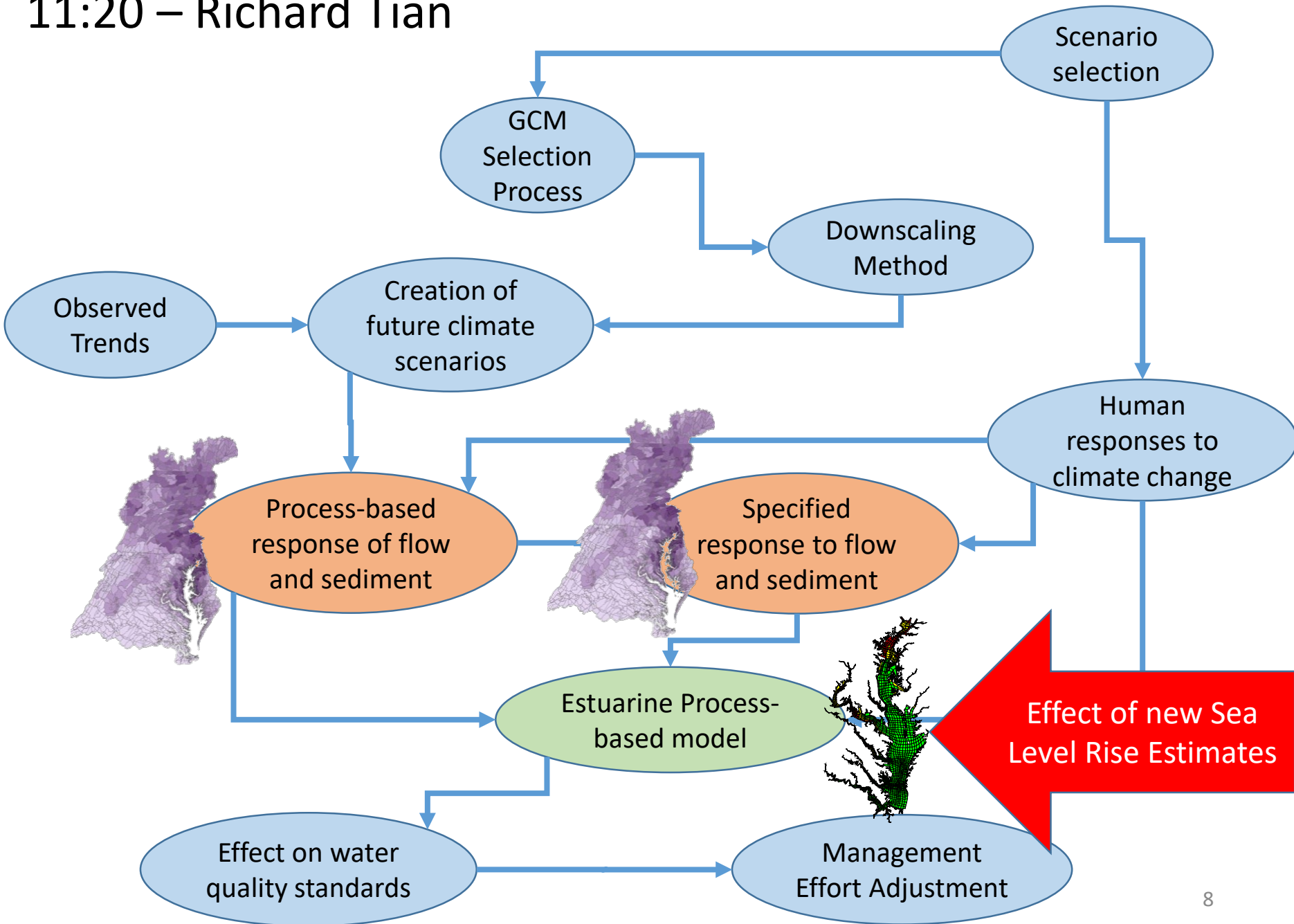
CBP Climate Analysis System



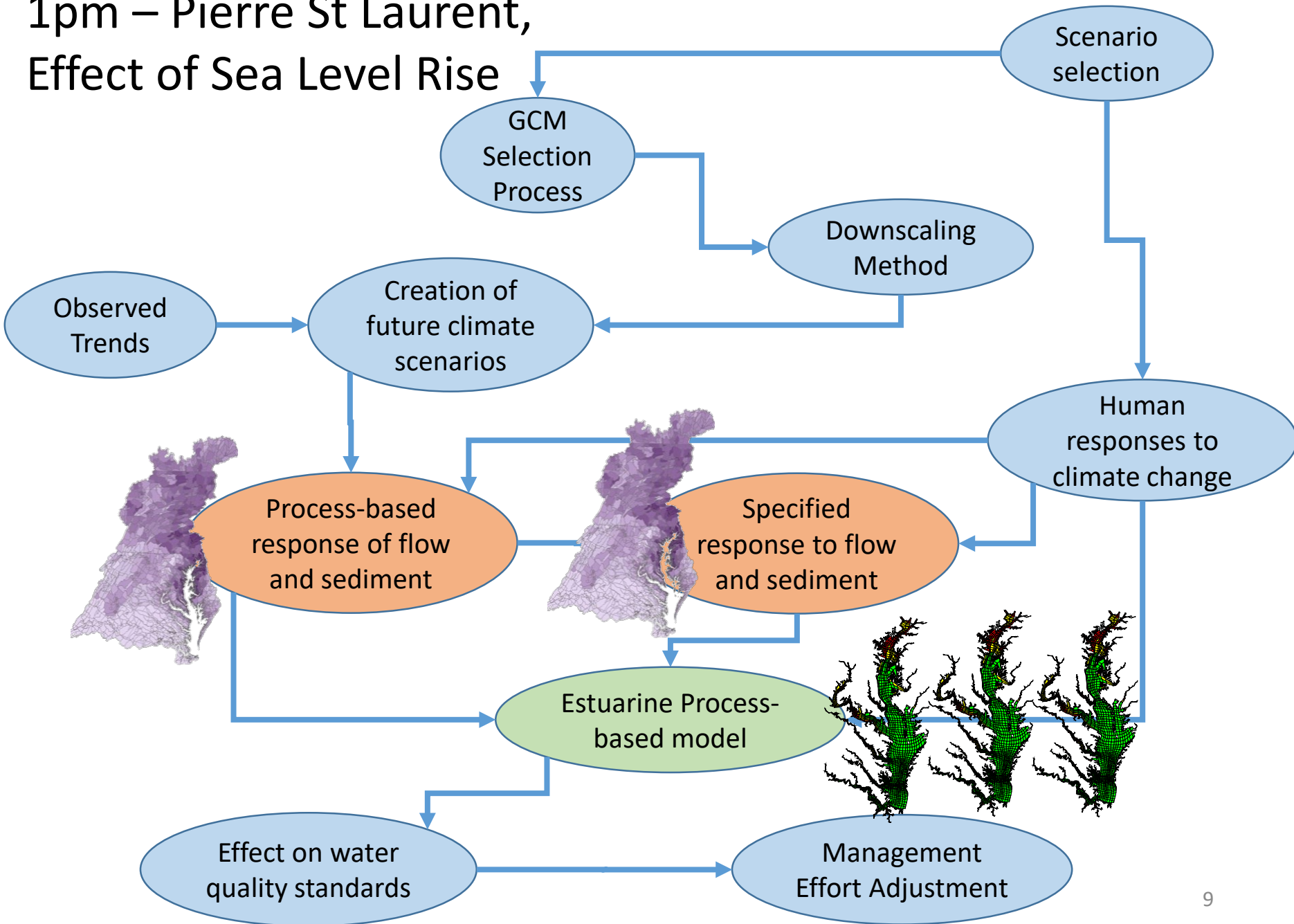
10:25 – Gopal Bhatt



11:20 – Richard Tian



1pm – Pierre St Laurent, Effect of Sea Level Rise



Climate Change Processes and Dependencies

Model
Data Set
Endpoint
Project/Decision

Complete
In Process
Unknown
Not Assessed

Complete
In Process
Unknown
Not Assessed

Complete
In Process
Unknown
Not Assessed

Complete
In Process
Unknown
Not Assessed

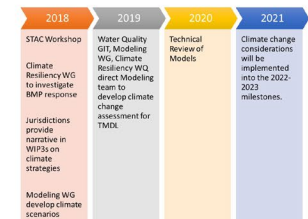
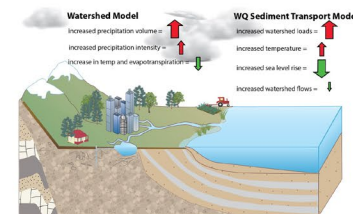
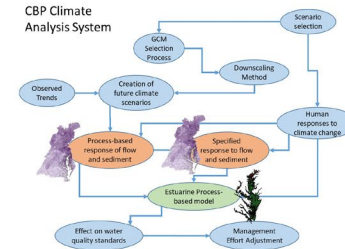
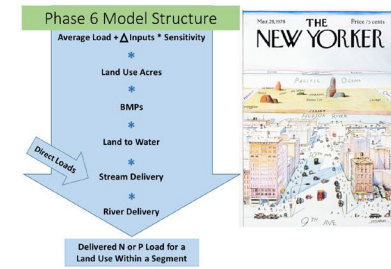
Complete
In Process
Unknown
Not Assessed

Complete
In Process
Unknown
Not Assessed

Complete
In Process
Unknown
Not Assessed

Complete
In Process
Unknown
Not Assessed

Complete
In Process
Unknown
Not Assessed



4/1/2019

Modeling Team Priorities for 2019

- Climate Change
- Documentation
- WIP support
- James CHLA
- Technology Transfer
- Other collaborative work
- Long-Range
 - Phase 7
 - Uncertainty quantification

*Progress made, but
nothing to share*

WIP support - Optimization

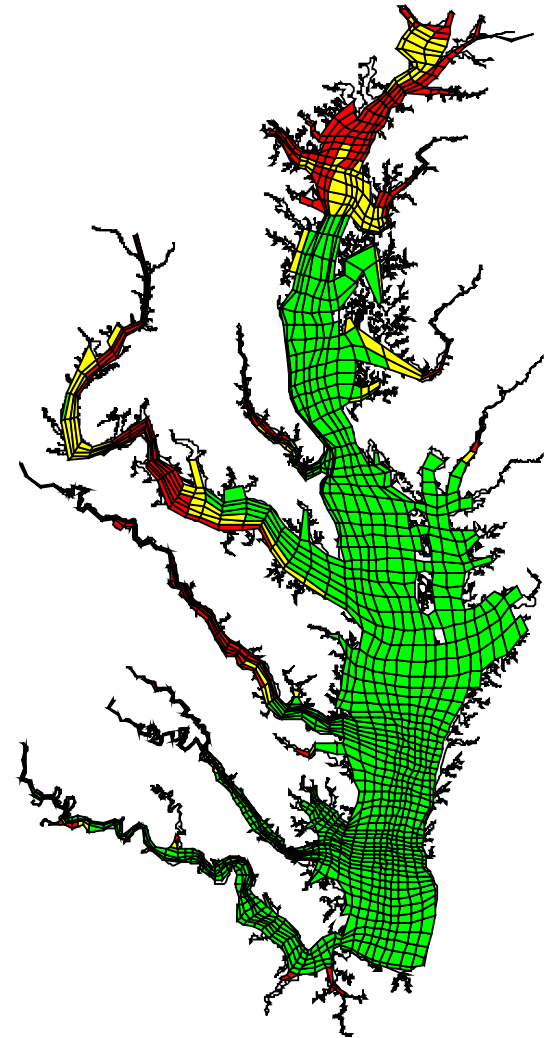
- Danny Kaufman 11am tomorrow
- Web tool available
- Optimizes efficiency BMPs only
 - No nutrient management
 - No buffers, etc
- Displays stored results



Technology Transfer

March 12-14

- Lew Linker 11:50 tomorrow
- Next workshop 7/23 – 7/25
- NCTC



Collaborative work toward future models

- Mechanical Aeration
 - Case study - Lora Harris – 1:40 today
- Direct runoff of atmospheric nitrogen
 - Joel Bostic 10:10 tomorrow
- Reactivity of eroded wetlands
 - Isabella Bertani – 10:40 tomorrow