

# **Presentation to Integrated Trends Analysis Team Meeting**

**November 12, 2016**

**Robert M. Hirsch**

*This information is preliminary and is subject to revision. It is being provided to meet the need for timely best science. The information is provided on the condition that neither the U.S. Geological Survey nor the U.S. Government may be held liable for any damages resulting from the authorized or unauthorized use of the information."*

# Two threads of underlying philosophy

John Tukey: Exploratory Data Analysis: it is “an attitude AND a flexibility AND some graph paper” -- “The picture-examining eye is the best finder we have of the wholly unanticipated”

Ralph Keeling: “The only way to determine what is happening to our planet is to measure it, and this means tracking changes decade after decade and poring over the records.

WRTDS – weighted regressions on time,  
discharge, and season

Build a statistical model for concentrations on  
every day in the period of record

Have it driven primarily by the data and not  
stuck in a “mathematical straight jacket”

Use this model **to depict the amount and kind**  
of change happening in concentration and in  
fluxes

# Three topics

- Status of WRTDS, EGRET, and uncertainty analysis
- Examples of uncertainty analysis applied to selected RIM data sets
- Encouragement for using various tools in EGRET to **explore** your data sets

# dataRetrieval

Retrieves water data for use in R from NWISWeb, the Water Quality Portal, and spreadsheets

## EGRET: Exploration & Graphics for RivEr Trends

Retrieve data: from USGS, Portal, or Spreadsheets

Flow history analysis

Water quality graphics

**WRTDS:** Weighted Regressions on Time Discharge & Season: for water quality trends and fluxes

WRTDS for exploration

# **All the software and manuals for EGRET and dataRetrieval**

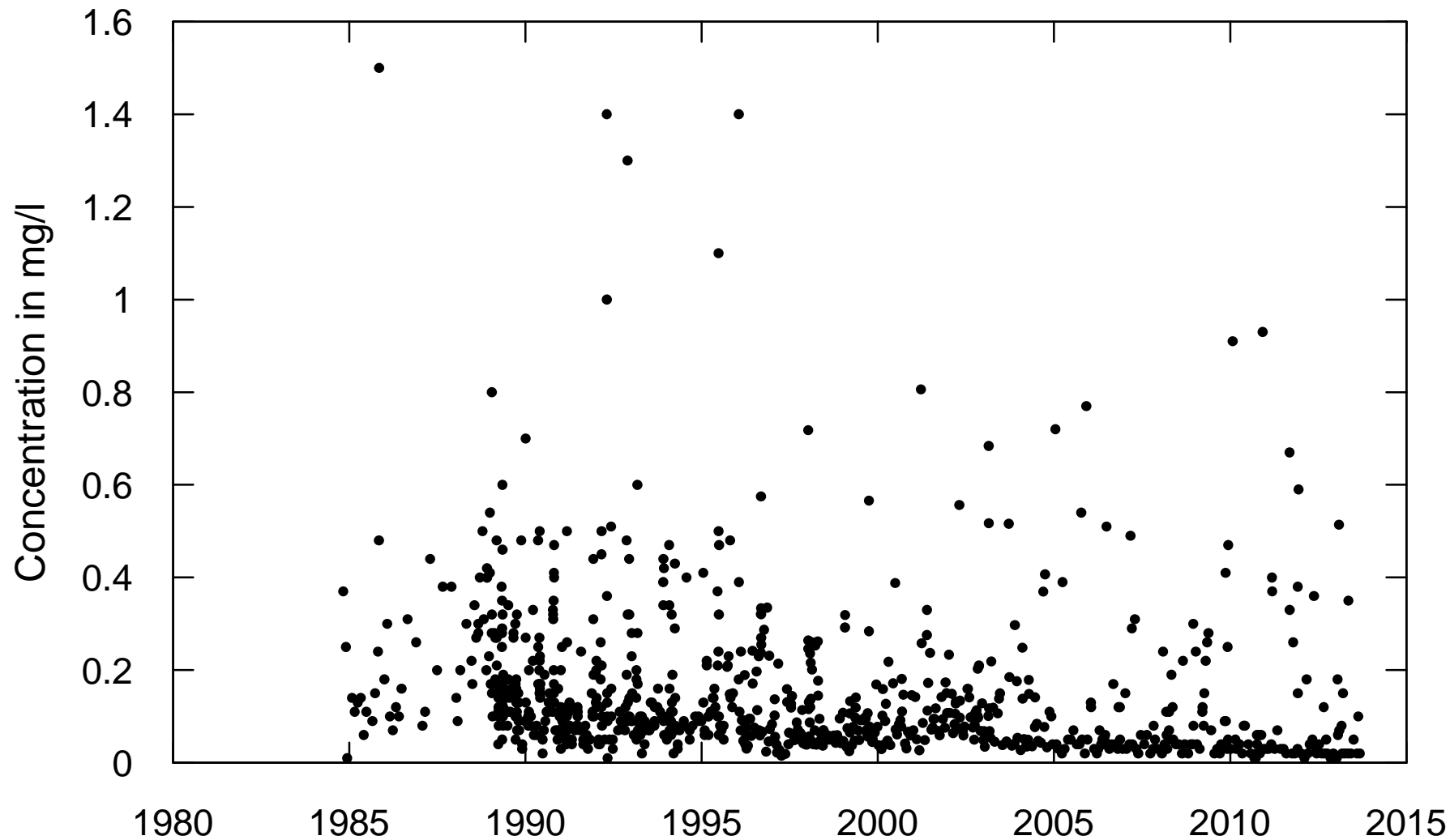
**<https://github.com/USGS-R/EGRET/wiki>**

JAMES RIVER AT CARTERSVILLE, VA  
Total Phosphorus  
Water Year

Concentration trends						
time span			change	slope	change	slope
			mg/L	mg/L/yr	%	%/yr
1985	to	2000	-0.17	-0.012	-63	-4.2
1985	to	2013	-0.2	-0.0073	-75	-2.7
2000	to	2013	-0.032	-0.0025	-32	-2.5

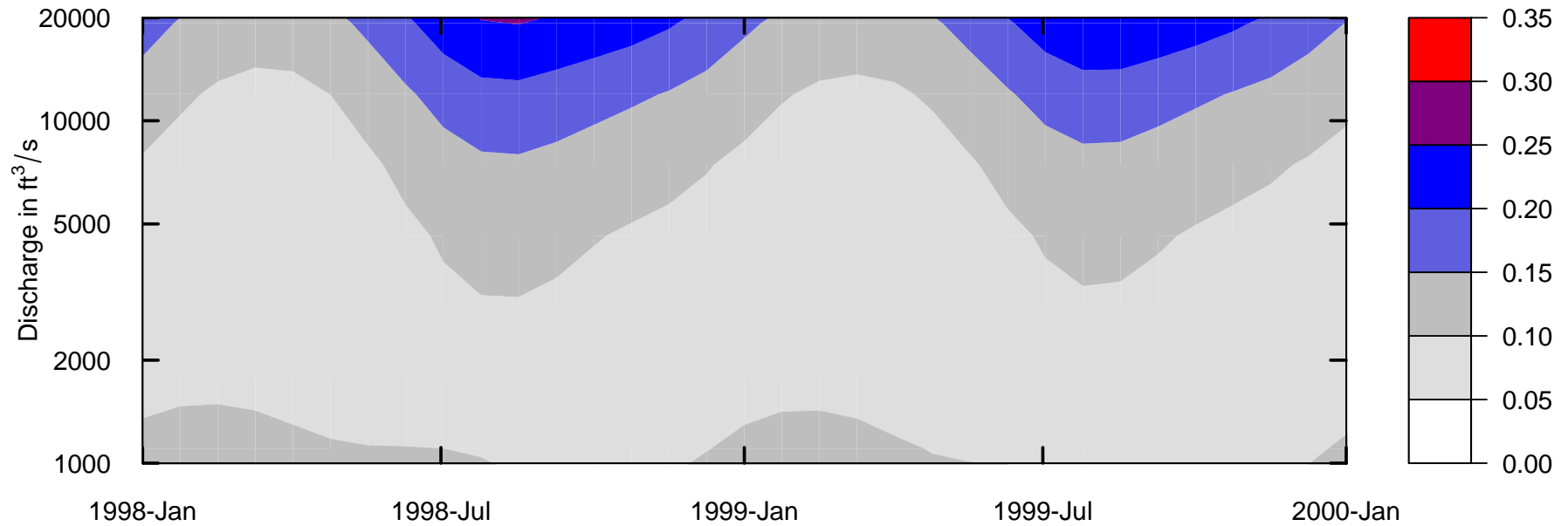
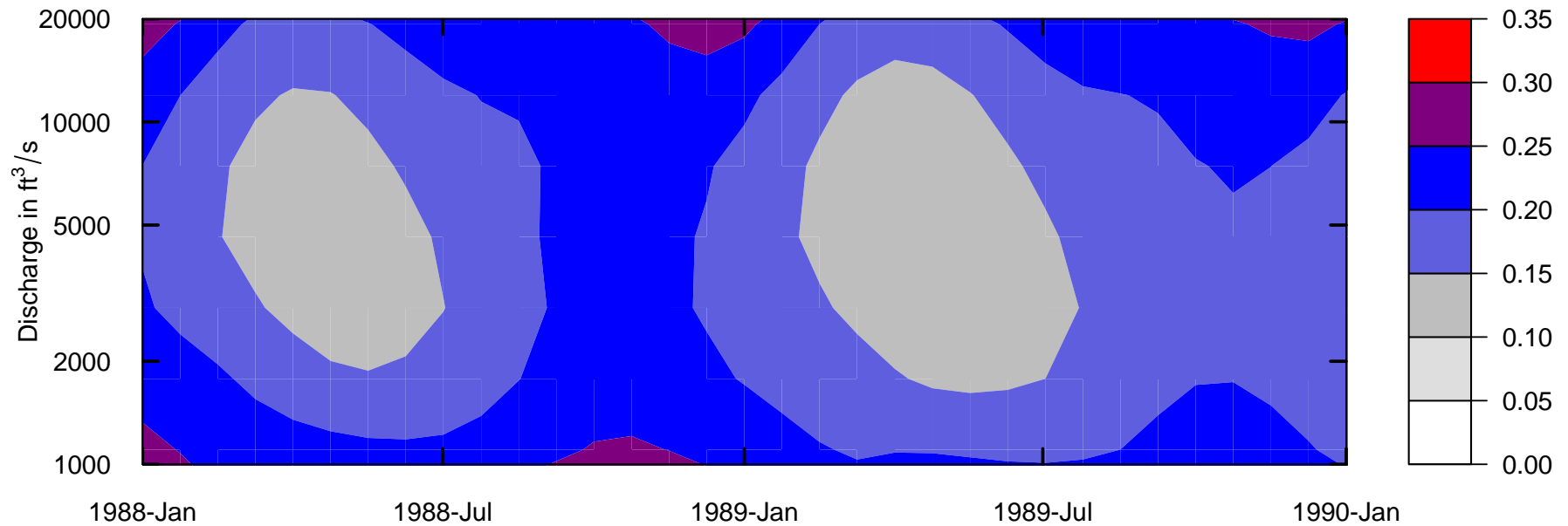
Flux Trends						
time span			change	slope	change	slope
			10^6 kg/yr	10^6 kg/yr /yr	%	%/yr
1985	to	2000	-0.84	-0.056	-47	-3.1
1985	to	2013	-0.49	-0.017	-27	-0.97
2000	to	2013	0.35	0.027	38	2.9

**JAMES RIVER AT CARTERSVILLE, VA**  
**Total Phosphorus**  
**Concentration versus Time**



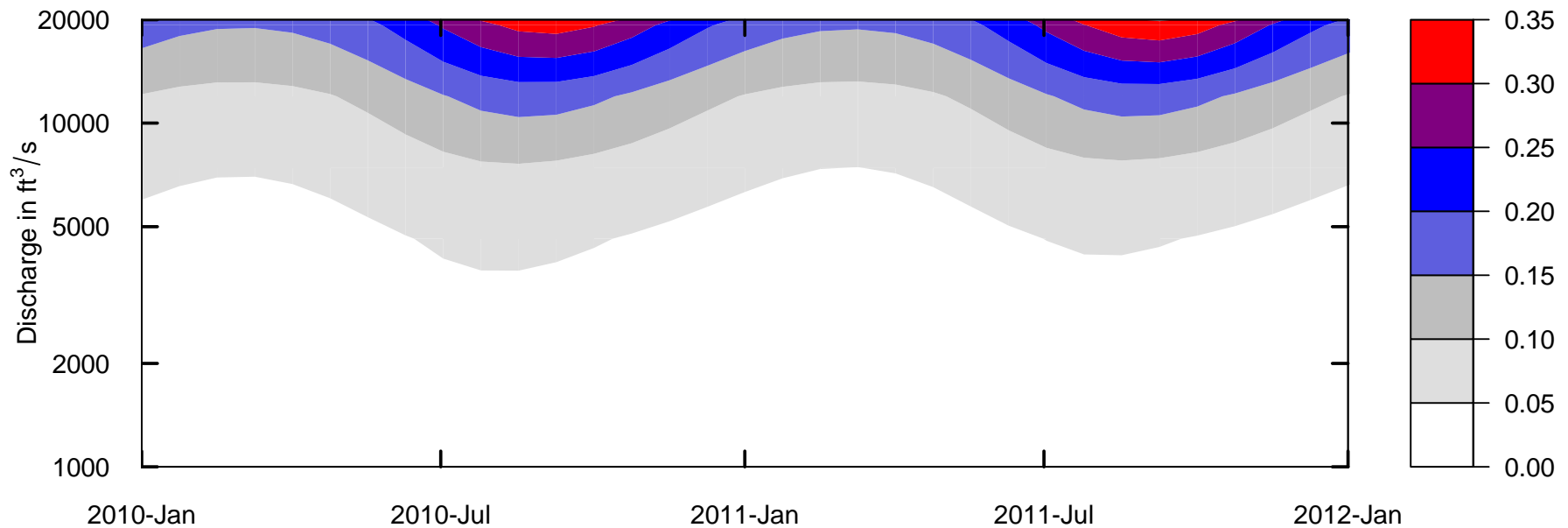
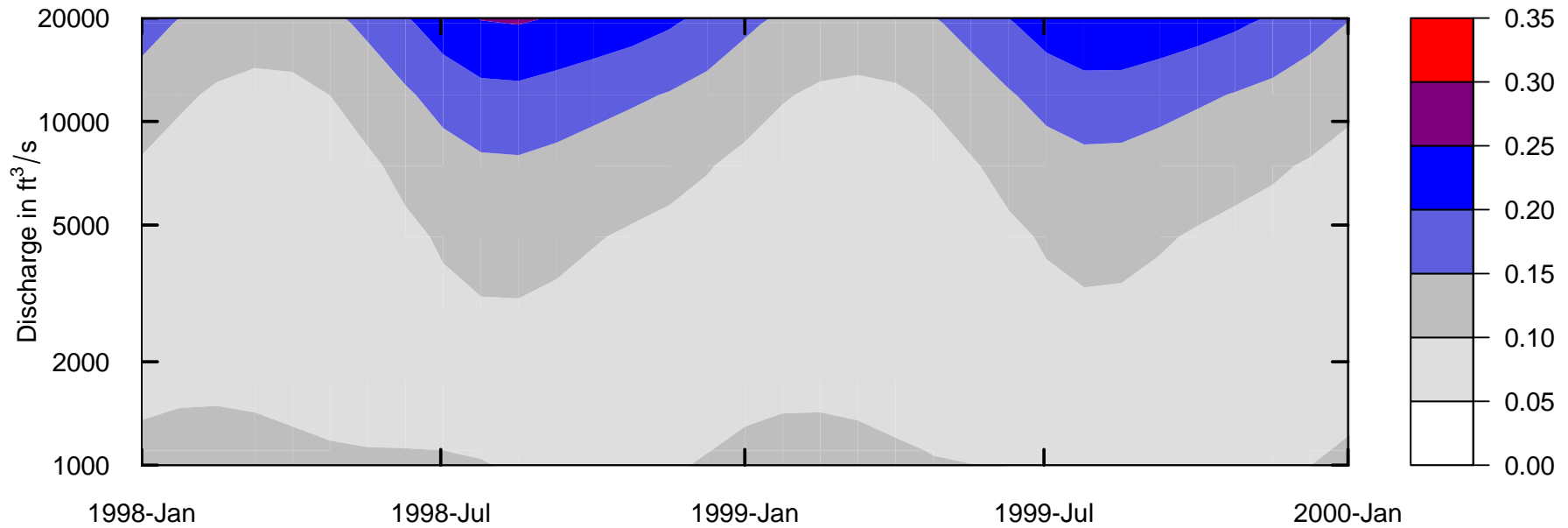


**JAMES RIVER AT CARTERSVILLE, VA Total Phosphorus  
Estimated Concentration Surface in Color**



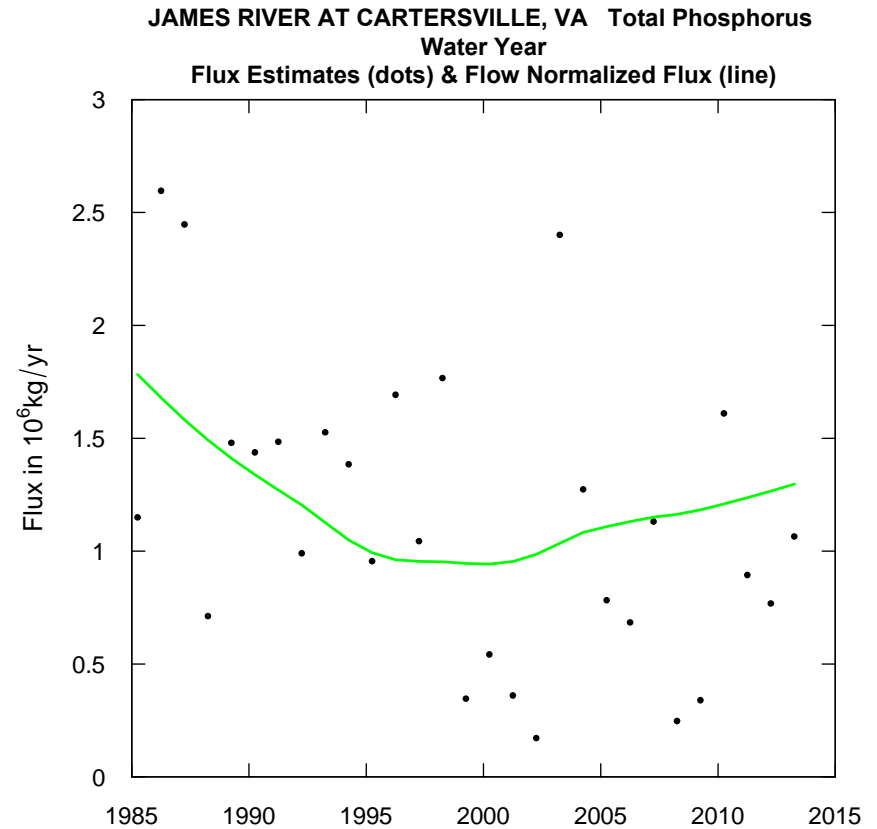
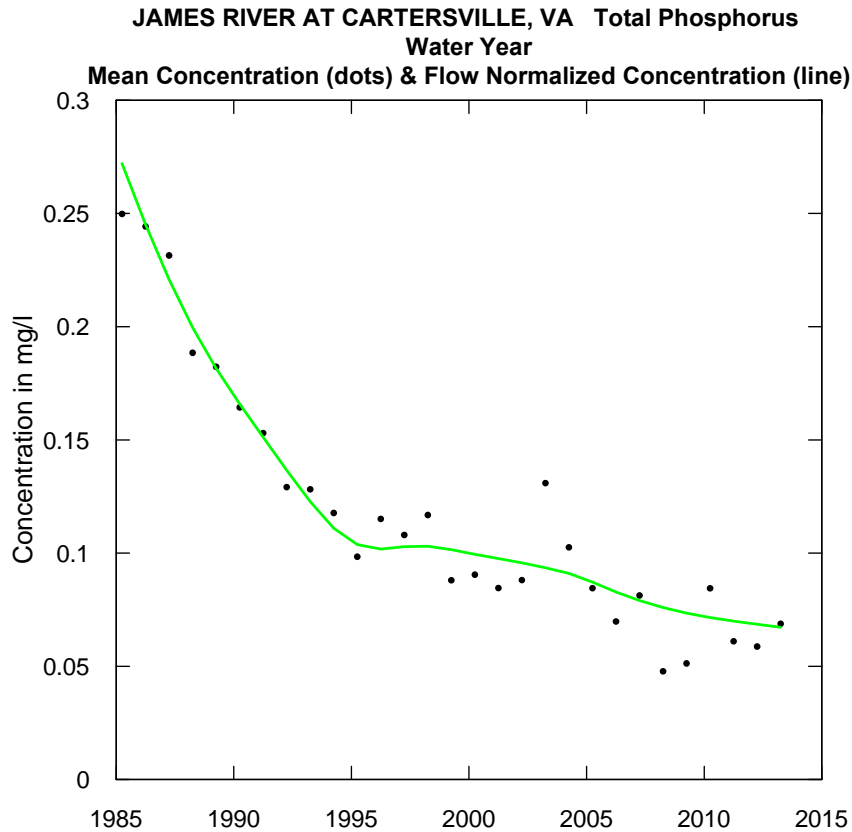
***Preliminary Information-Subject to Revision. Not for Citation or Distribution.***

**JAMES RIVER AT CARTERSVILLE, VA Total Phosphorus  
Estimated Concentration Surface in Color**



***Preliminary Information-Subject to Revision. Not for Citation or Distribution.***

# James River, TP trends



# **Uncertainty analysis: Code is written to do the following**

- Accept or reject  $H_0$  (no trend) at  $\alpha = 0.1$  for FN Concentration and FN flux for any given start & end year (extensive Monte Carlo testing of method, more to come)**
- Estimate the 90% CI on trend over that period (in real units or percent change)**
- Display a 50% CI on the whole FN Concentration record and FN Flux record**

# Bootstrap Results James River TP

## Results for the period 1985 - 2013

For Flow Normalized Concentration, Reject  $H_0$ :  $p < 0.03$

For Flow Normalized Flux, Do not reject:  $p = 0.41$

90% Confidence Interval for Slope of Concentration -109% to -19%

90% Confidence Interval for slope of Flux -75% to +42%

## Results for the period 2000 – 2013

For Flow Normalized Concentration, Reject  $H_0$ :  $p = 0.01$

For Flow Normalized Flux, Reject  $H_0$ :  $p = 0.07$

90% Confidence Interval for Slope of Concentration, -51% to -16%

90% Confidence Interval for Slope of Flux, 3% to 72%

# Bootstrap Results James River TP

## Results for the period 1985 - 2000

For Flow Normalized Concentration, Reject  $H_0$ :  $p = 0.02$

For Flow Normalized Flux, Reject  $H_0$ :  $p = 0.06$

90% Confidence Interval for Slope of Concentration -90% to -26%

90% Confidence Interval for slope of Flux -76% to -9%

## Results for the period 2000 – 2013

For Flow Normalized Concentration, Reject  $H_0$ ,  $p = 0.01$

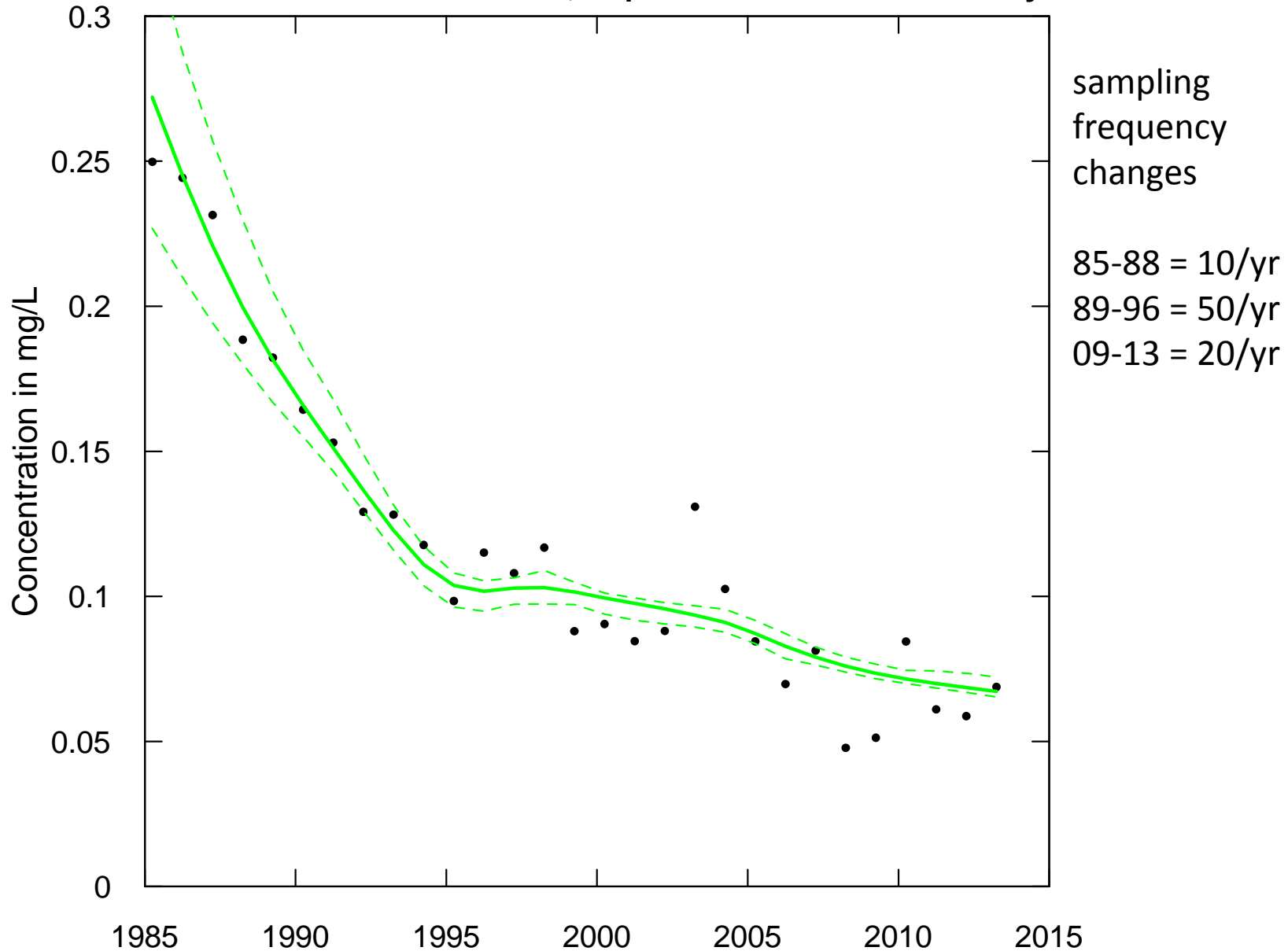
For Flow Normalized Flux, Reject  $H_0$ ,  $p = 0.07$

90% Confidence Interval for Slope of Concentration, -51% to -16%

90% Confidence Interval for Slope of Flux, 3% to 72%

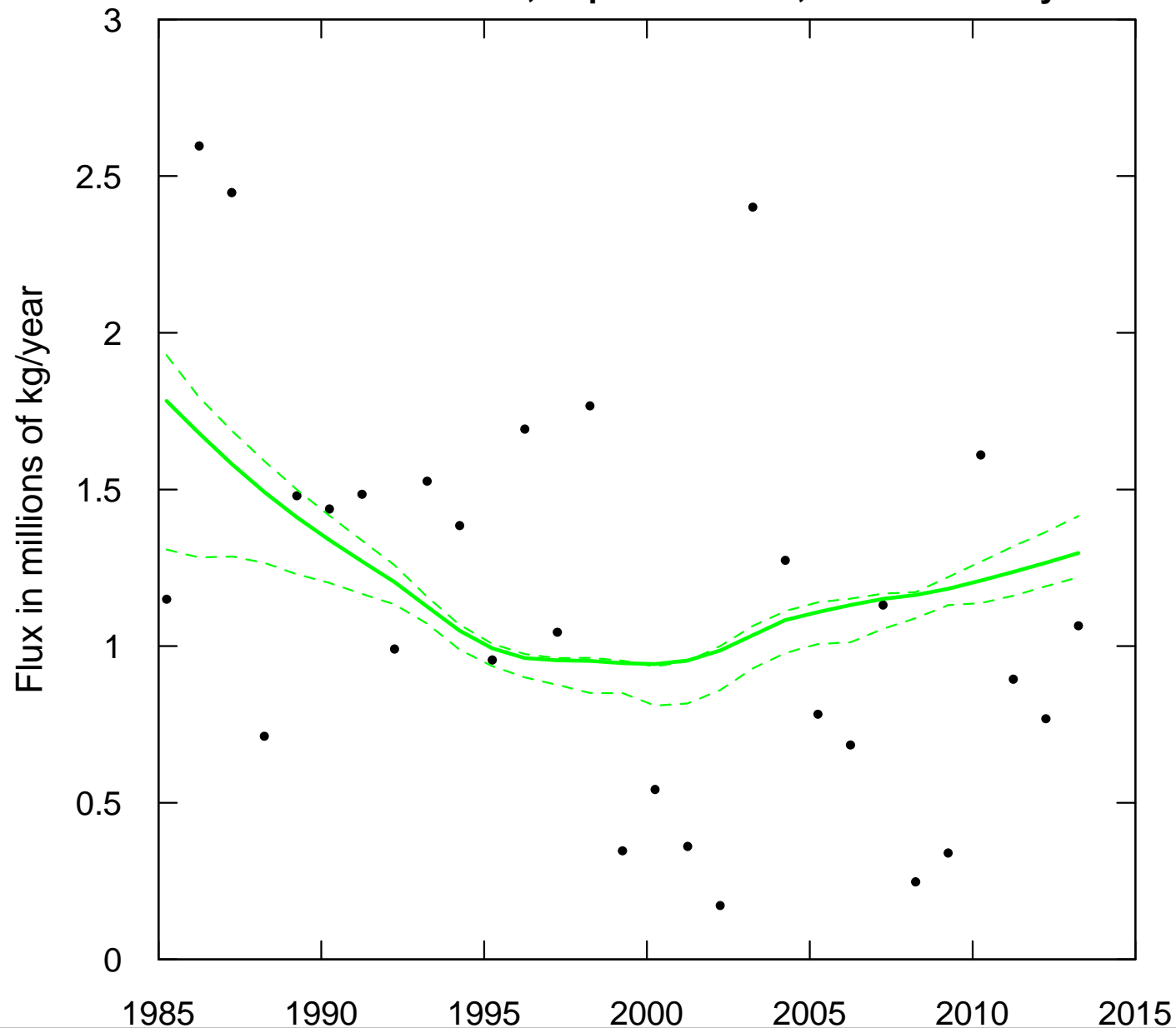
**JAMES RIVER AT CARTERSVILLE, VA Total Phosphorus**  
**Water Year**

**50 % CI on FN Concentration, Replicates = 32 Block= 180 days**



**JAMES RIVER AT CARTERSVILLE, VA Total Phosphorus  
Water Year**

**50 % CI on FN Flux, Replicates = 32 , Block= 180 days**



sampling  
frequency  
changes

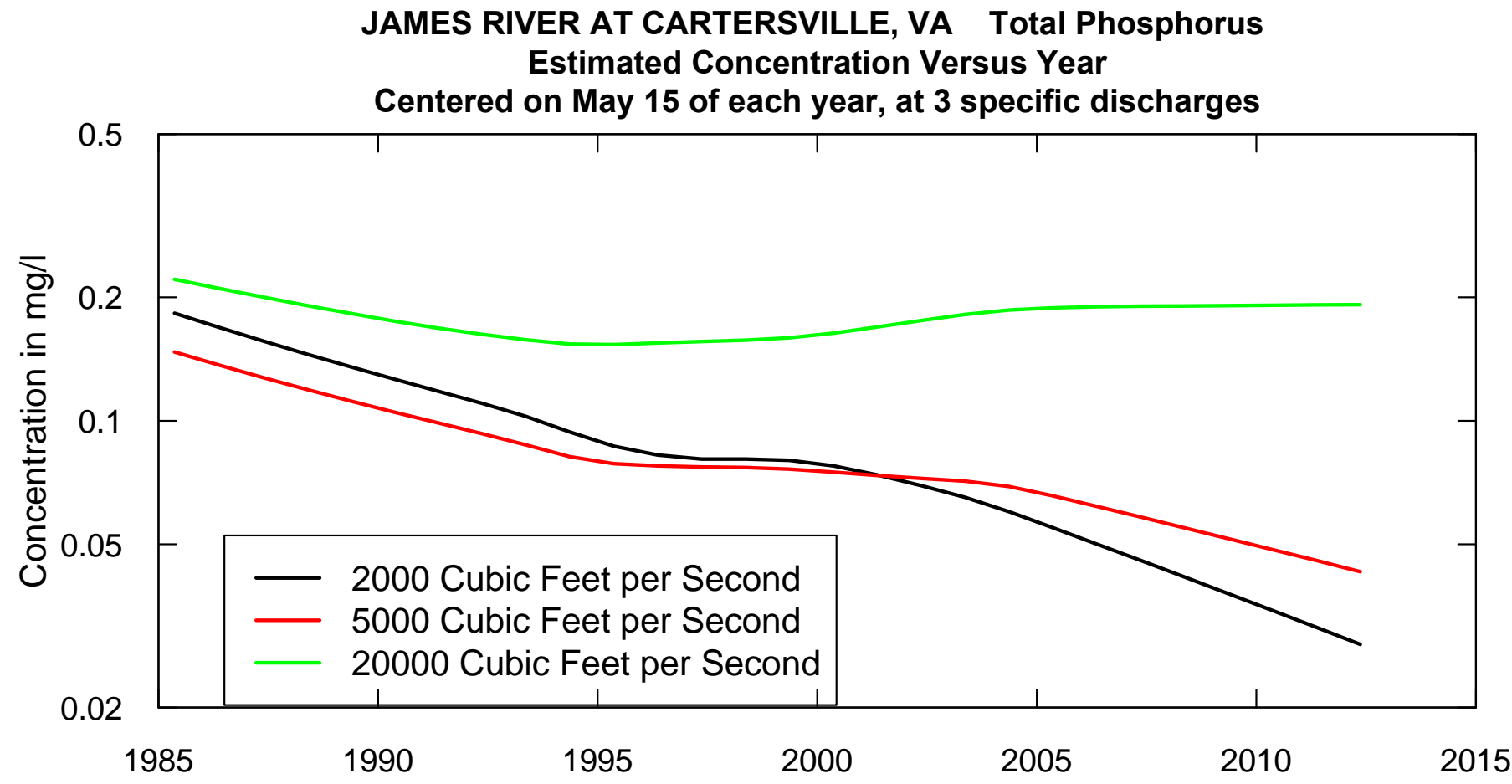
85-88 = 10/yr

89-96 = 50/yr

09-13 = 20/yr

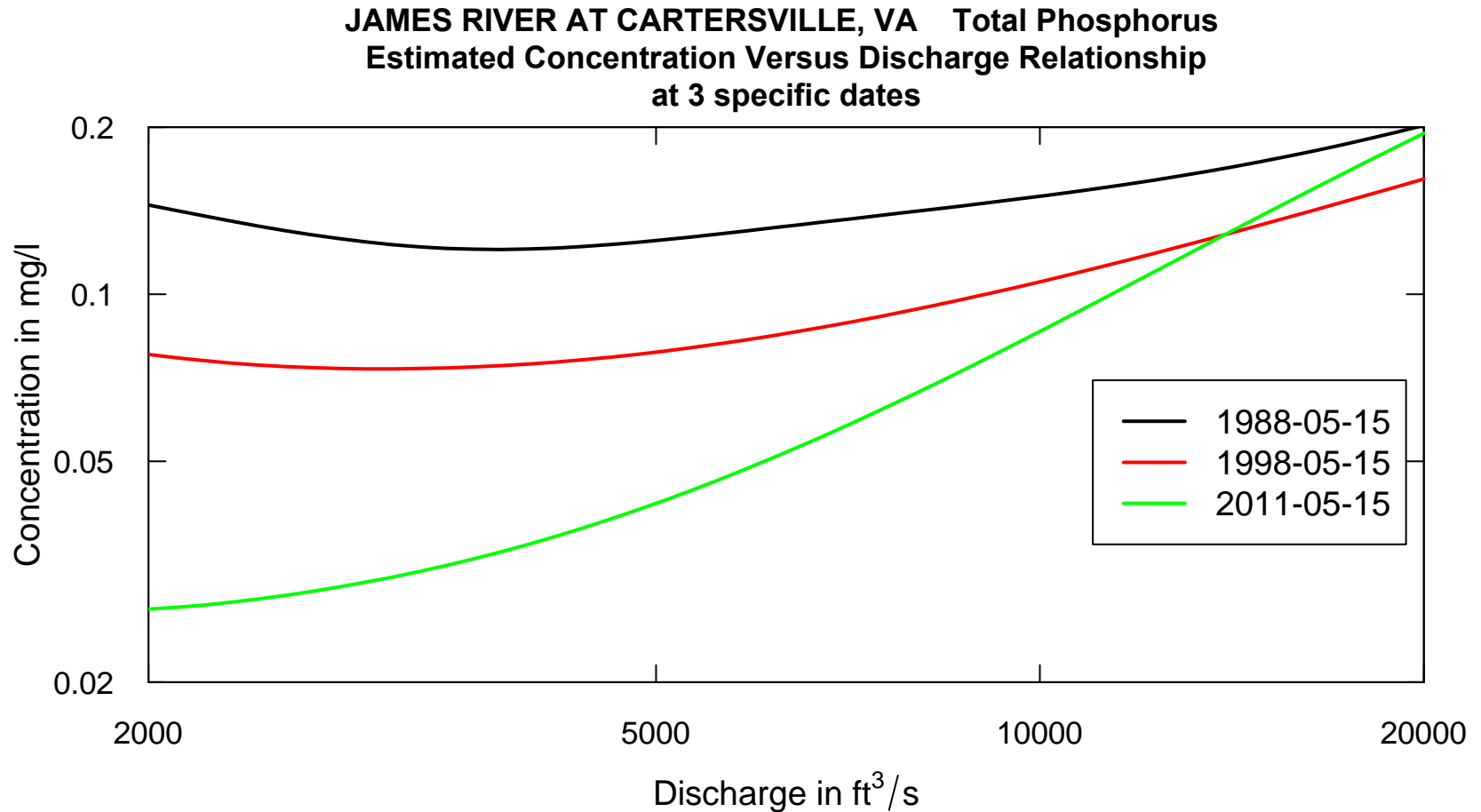


```
plotConcTimeSmooth(2000,5000,20000,"05-15",1985,2013,qUnit=1,logScale=TRUE)
```



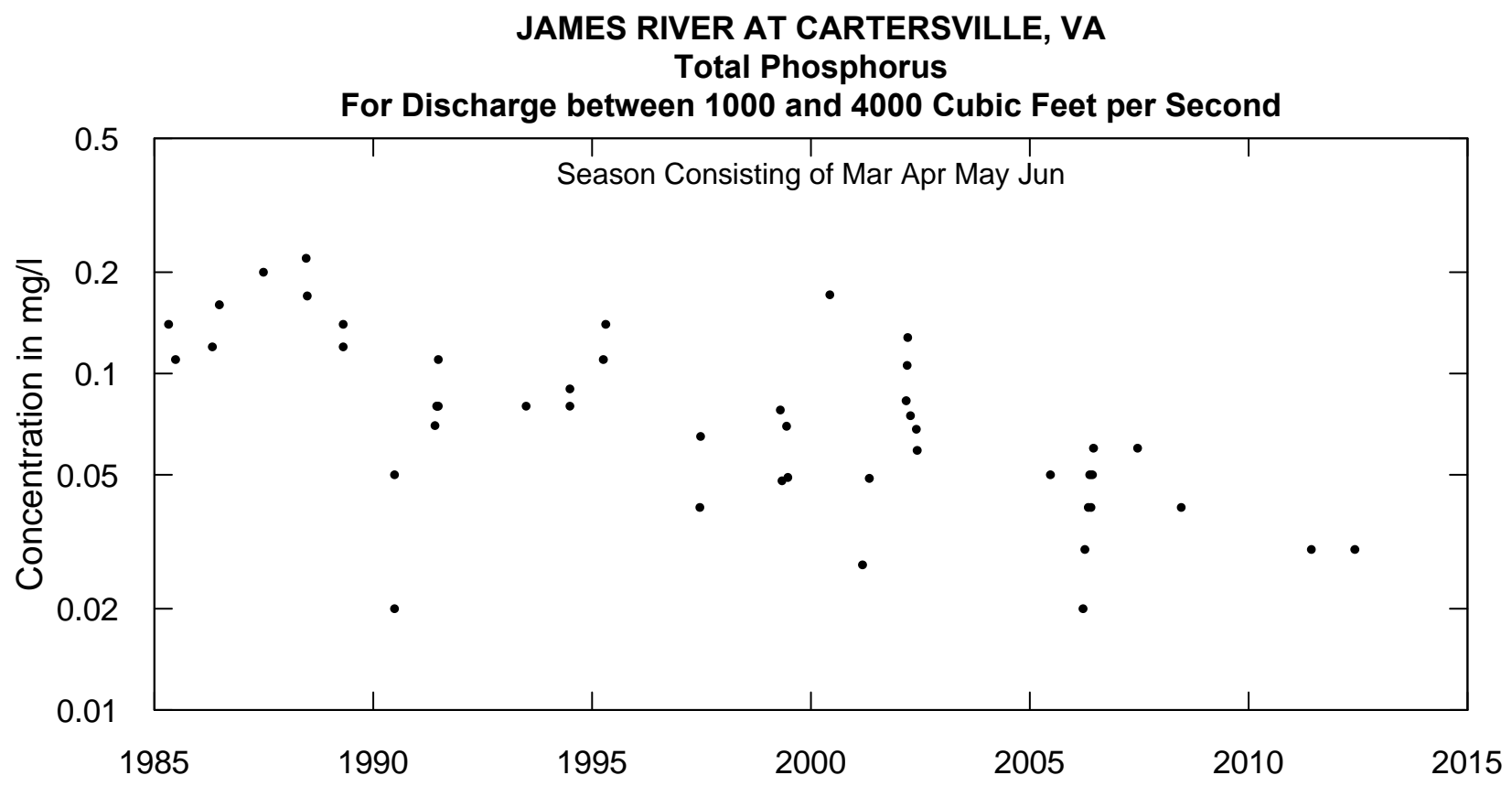
**Note: Estimator requires that these curves all be linear or quadratic and that they all have the exact same shape and they never cross**

```
plotConcQSmooth("1988-05-15","1998-05-15","2011-05-15",2000,20000,qUnit=1,  
legendLeft=11000,legendTop=0.07,logScale=TRUE,concMax=0.2)
```



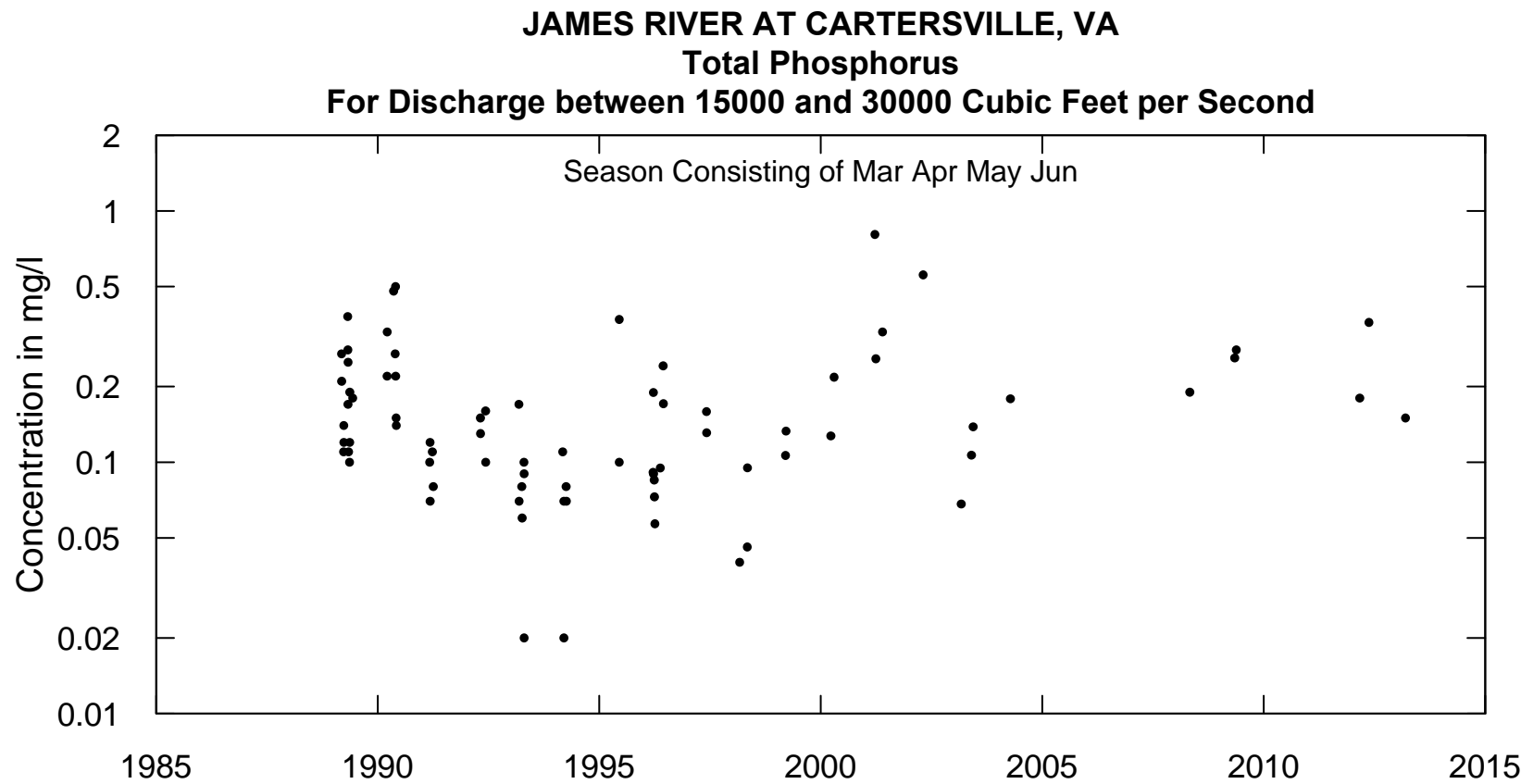
**Note: Estimator requires that these curves all be linear or quadratic (not too bad here) **and** that they all have the exact same shape **and** they never cross**

```
INFO<-setPA(paStart = 3,paLong = 4)
plotConcTime(qUnit=1,qLower=1000,qUpper=4000,logScale=TRUE)
```



**At low discharge, rather large long-term decline in concentration**

```
plotConcTime(qUnit=1,qLower=15000,qUpper=30000,logScale=TRUE,concMax=2)
```



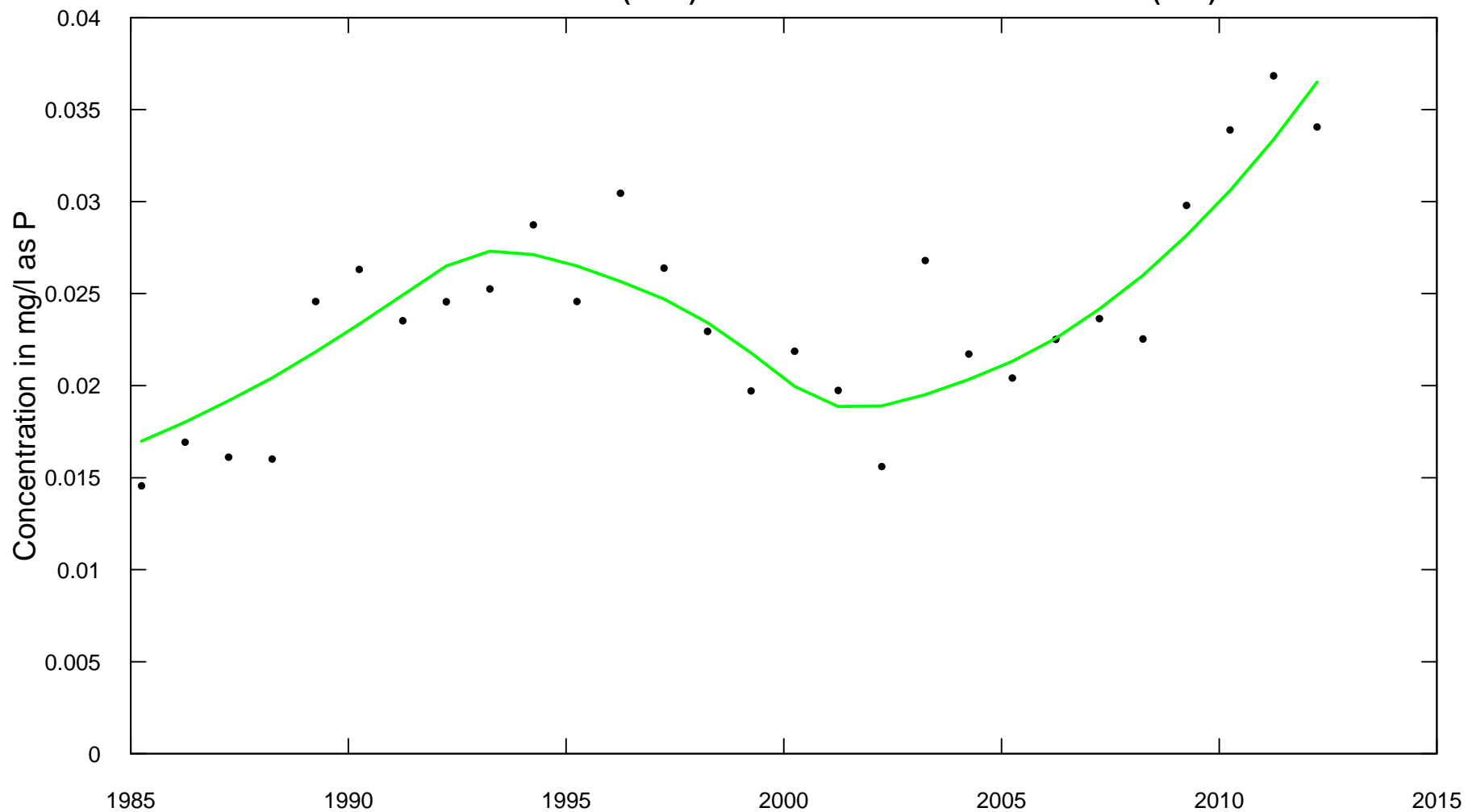
**At high discharge, some ups and downs, more recently up, but no major long-term decline as is seen at low discharge**

# A quick look at Choptank River, Dissolved Orthophosphorus, 1985 - 2012

**CHOPTANK RIVER NEAR GREENSBORO, MD Orthophosphate, filtered, as P**

**Water Year**

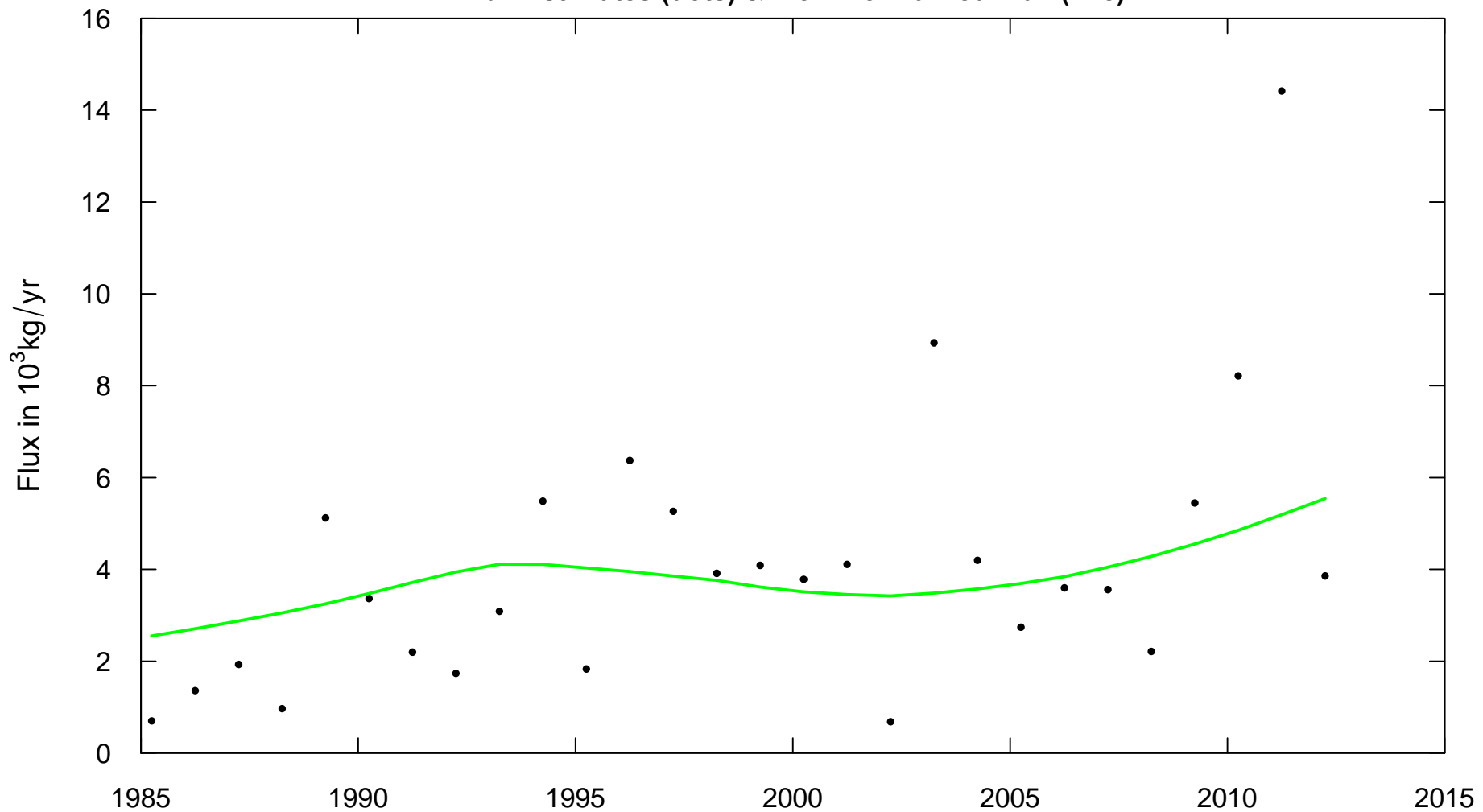
**Mean Concentration (dots) & Flow Normalized Concentration (line)**



**CHOPTANK RIVER NEAR GREENSBORO, MD Orthophosphate, filtered, as P**

**Water Year**

**Flux Estimates (dots) & Flow Normalized Flux (line)**



tableChange (fluxUnit=8,yearPoints=c(1985,2000,2012))

CHOPTANK RIVER NEAR GREENSBORO, MD

Orthophosphate, filtered, as P

Water Year

#### Concentration trends

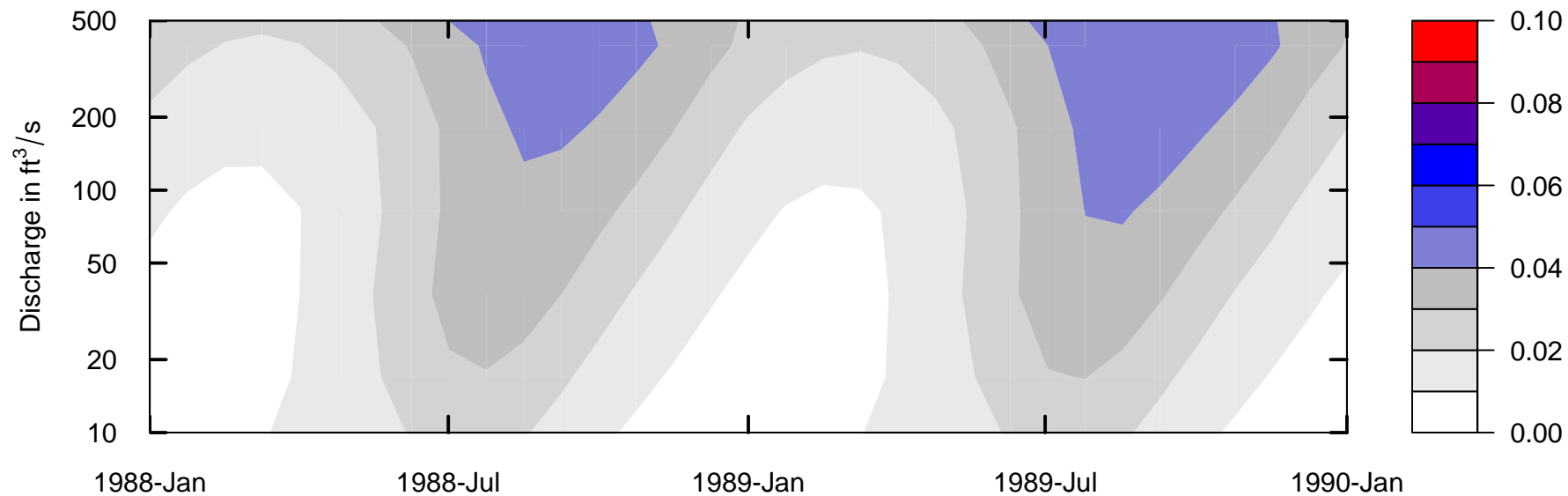
time span			change mg/L	slope mg/L/yr	change %	slope %/yr
1985	to	2000	0.003	2e-04	17	1.2
1985	to	2012	0.019	0.00072	115	4.3
2000	to	2012	0.017	0.0014	83	6.9

#### Flux Trends

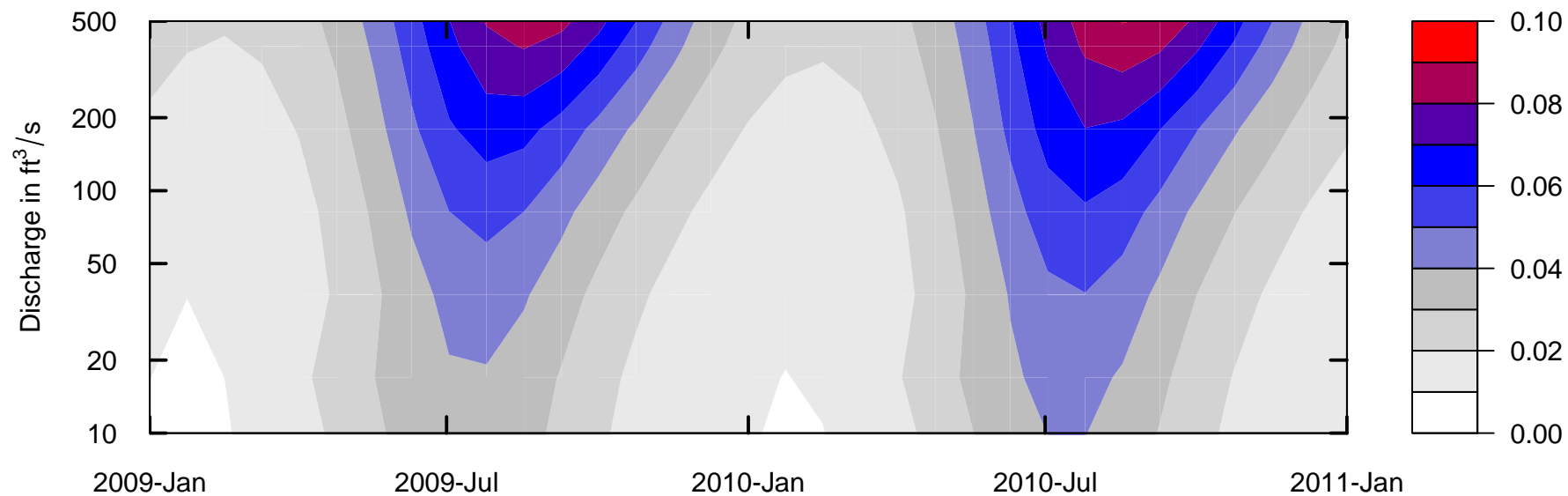
time span			change 10 <sup>3</sup> kg/yr	slope 10 <sup>3</sup> kg/yr /yr	change %	slope %/yr
1985	to	2000	0.96	0.064	38	2.5
1985	to	2012	3	0.11	117	4.3
2000	to	2012	2	0.17	58	4.8



**CHOPTANK RIVER NEAR GREENSBORO, MD Orthophosphate, filtered, as P**  
**Estimated Concentration Surface in Color**



**CHOPTANK RIVER NEAR GREENSBORO, MD Orthophosphate, filtered, as P**  
**Estimated Concentration Surface in Color**



Bootstrap results 2000 – 2012  
Choptank, Dissolved Ortho P

Reject  $H_0$  for FN Concentration:  $p < 0.024$

Reject  $H_0$  for FN Flux:  $p < 0.024$

**Estimated change over the period 2000 - 2012**

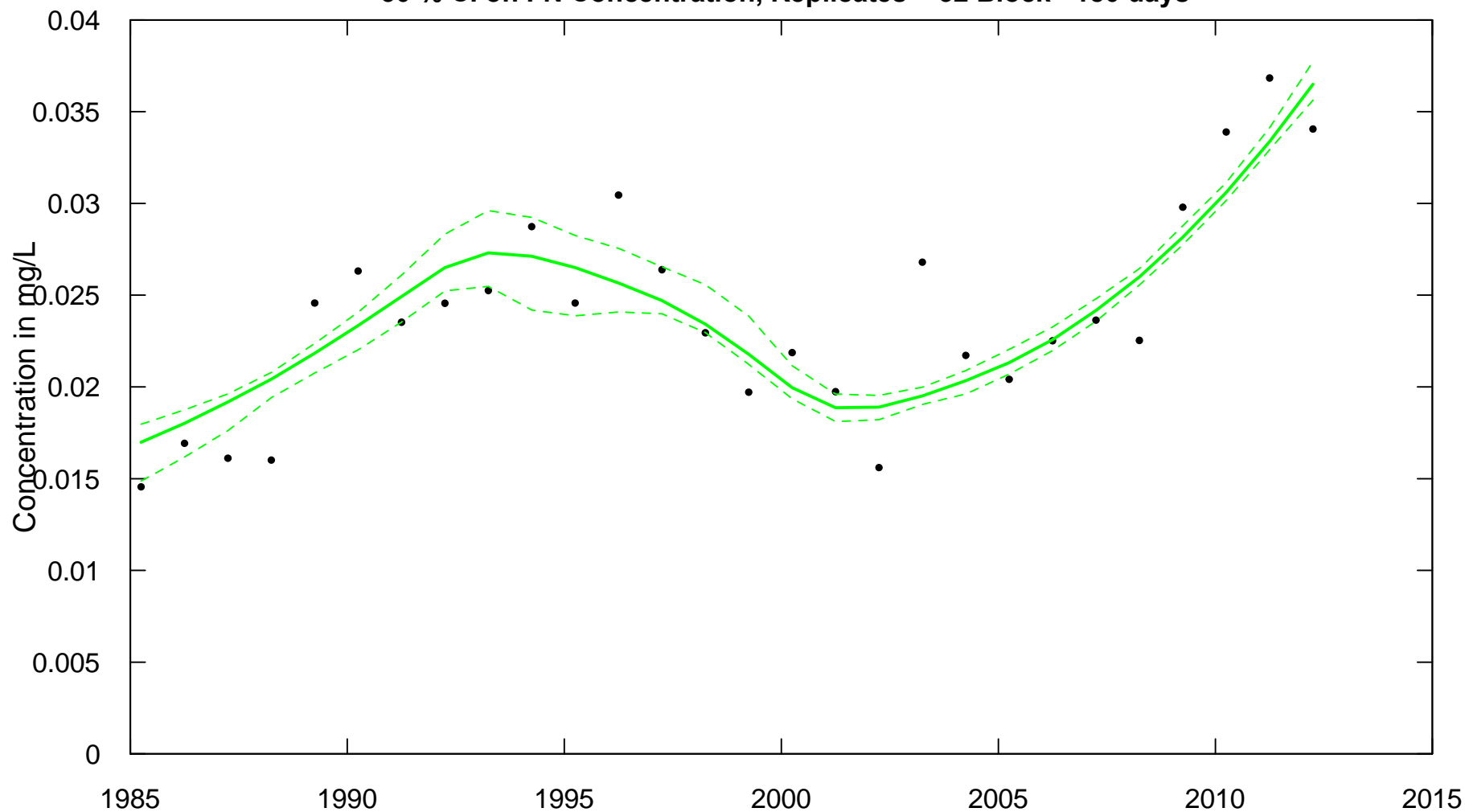
**Concentration 0.0165 mg/L, 90% CI (0.0107,0.0209)**

**Flux  $2.03 \times 10^3$  kg/yr, 90% CI (1.50, 2.60)**

**CHOPTANK RIVER NEAR GREENSBORO, MD Orthophosphate, filtered, as P**

**Water Year**

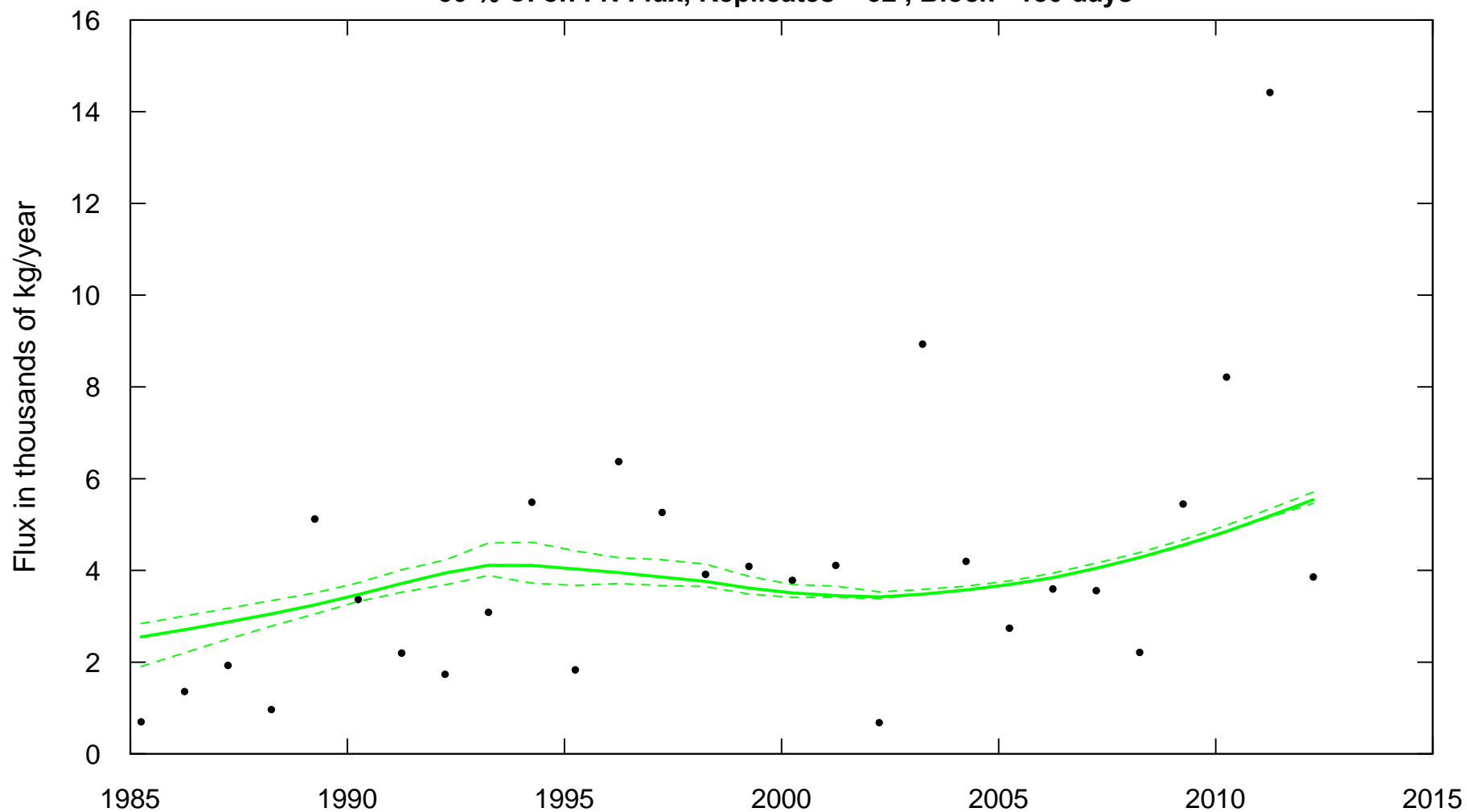
**50 % CI on FN Concentration, Replicates = 32 Block= 180 days**



**CHOPTANK RIVER NEAR GREENSBORO, MD Orthophosphate, filtered, as P**

**Water Year**

**50 % CI on FN Flux, Replicates = 32 , Block= 180 days**



# My reaction

- The phosphorus story on the Eastern Shore is a big issue: because of proximity to the Bay and intensity of the agriculture.
- This Choptank example and an earlier look I took at the Nanticoke at Bridgeville both suggest substantial upwards trends since 2000.
- One of the big nutrient management questions for the Bay watershed is the growing amount of stored P in soils (particularly from animal waste) that this stored P is moving increasing amounts of P to streams in runoff events.

When all is said and done:

**The only way to figure out what is happening to our planet is to measure it,**

**and this means tracking changes decade after decade**

**and poring over the records.**

*Preliminary Information-Subject to Revision. Not for Citation or Distribution.*

# dataDelivery and EGRET

- Information and software available at:  
<https://github.com/USGS-R/EGRET/wiki>

**dataRetrieval and EGRET give you a toolbox to help you pore over the records. I hope you will use those tools.**

