

# **Biennial Strategy Review System and Watershed Agreement Progress**

Principals' Staff Committee Presentation  
September 21, 2021

# **In the next 40 minutes...**

- 1. Summary of 2021 Biennial SRS meeting findings and next steps**
- 2. Summary of Outcome Attainability Efforts**
- 3. PSC Commitment to EC on Management Strategy Progress**



2 0 1 4

As amended, January 24, 2020

## PRINCIPLES

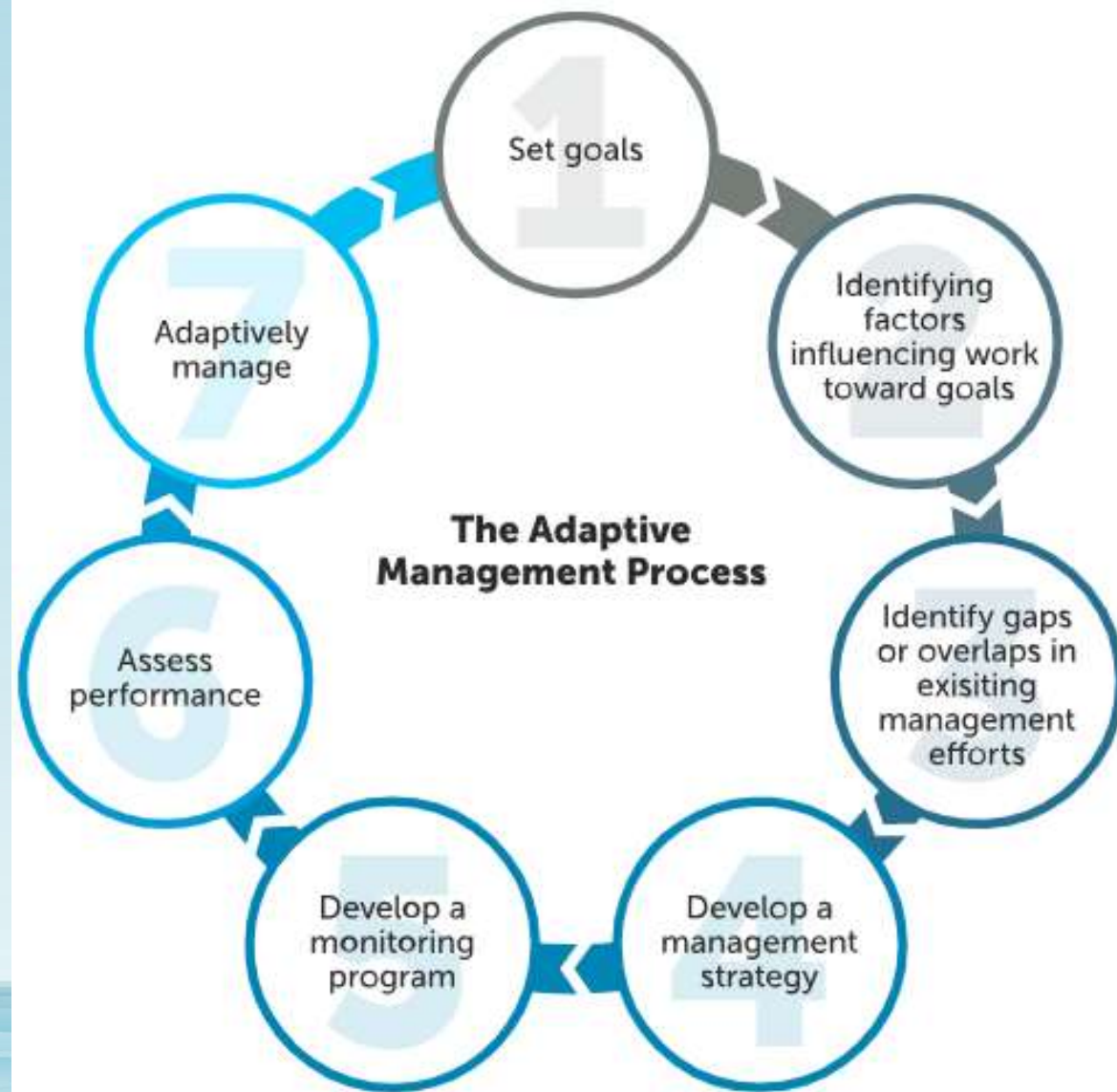
The following principles are an overarching framework by which the Chesapeake Bay Program commits to operate. They encompass the partners' collective, core values and are intended to help guide us in our work as the Partnership develops policy and takes actions to achieve this Agreement's Goals and Outcomes.

THE PARTNERSHIP WILL:

**“Adaptively manage at all levels of the Partnership to foster continuous improvement.”**


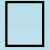


# Strategy Review System

- Created to consistently apply adaptive management to CBP's work towards achieving the 31 outcomes of the *Watershed Agreement*. It is the most formalized and broadly-instituted approach to adaptive management of any major environmental restoration program in the US.
- **Adaptive management** – a systematic approach for making decisions in the face of uncertainty and reducing this uncertainty over time. We learn while doing: take action, monitor results, assess progress and adjust efforts as needed.
- **Quarterly Progress Meetings** - quarterly opportunities for GITs to report progress, lessons learned, and identified adaptations to MB, and engage MB in moving forward.



# 2021 Management Board Meeting Dates

## KEY

-  Quarterly Progress Meeting and First Round SRS Presentations
-  Interim Management Board Meeting and Follow Up SRS Discussions
-  Interim Management Board Meeting
-  Biennial SRS Meeting

**Outcomes for SRS Presentations:  
(discussion the following month)**

January						
S	M	T	W	T	F	S
					1	2
3	4	5	6	7	8	9
10	11	12	13	14	15	16
17	18	19	20	21	22	23
24	25	26	27	28	29	30
31						

February						
S	M	T	W	T	F	S
	1	2	3	4	5	6
7	8	9	10	11	12	13
14	15	16	17	18	19	20
21	22	23	24	25	26	27
28						

March						
S	M	T	W	T	F	S
	1	2	3	4	5	6
7	8	9	10	11	12	13
14	15	16	17	18	19	20
21	22	23	24	25	26	27
28	29	30	31			

April						
S	M	T	W	T	F	S
					1	2
3	4	5	6	7	8	9
10	11	12	13	14	15	16
17	18	19	20	21	22	23
24	25	26	27	28	29	30

May						
S	M	T	W	T	F	S
						1
2	3	4	5	6	7	8
9	10	11	12	13	14	15
16	17	18	19	20	21	22
23	24	25	26	27	28	29
30	31					

June						
S	M	T	W	T	F	S
		1	2	3	4	5
6	7	8	9	10	11	12
13	14	15	16	17	18	19
20	21	22	23	24	25	26
27	28	29	30			

July						
S	M	T	W	T	F	S
				1	2	3
4	5	6	7	8	9	10
11	12	13	14	15	16	17
18	19	20	21	22	23	24
25	26	27	28	29	30	31

August						
S	M	T	W	T	F	S
1	2	3	4	5	6	7
8	9	10	11	12	13	14
15	16	17	18	19	20	21
22	23	24	25	26	27	28
29	30	31				

September						
S	M	T	W	T	F	S
			1	2	3	4
5	6	7	8	9	10	11
12	13	14	15	16	17	18
19	20	21	22	23	24	25
26	27	28	29	30		

October						
S	M	T	W	T	F	S
					1	2
3	4	5	6	7	8	9
10	11	12	13	14	15	16
17	18	19	20	21	22	23
24	25	26	27	28	29	30
31						

November						
S	M	T	W	T	F	S
	1	2	3	4	5	6
7	8	9	10	11	12	13
14	15	16	17	18	19	20
21	22	23	24	25	26	27
28	29	30				

December						
S	M	T	W	T	F	S
			1	2	3	4
5	6	7	8	9	10	11
12	13	14	15	16	17	18
19	20	21	22	23	24	25
26	27	28	29	30	31	

## FEBRUARY

### Local Action

- Tree Canopy
- Local Leadership
- Land Use
- Meth./Metrics
- Land Use Options

## MAY

### Biennial Review Meeting

## AUGUST

### Healthy Watersheds

- Healthy Watersheds
- Protected Lands
- Stream Health and Brook Trout
- Fish Habitat
- Fish Passage

## NOVEMBER

### Aquatic Life

- Blue Crab Abundance
- Blue Crab Management
- SAV
- Oysters
- Forage Fish



# The Strategic Science and Research Framework

The SSRF was developed by CBP to help focus existing science resources, leverage the research enterprise, and more effectively provide science to advance CBP's efforts and decision-making. It arose from a need to more consistently track and assess the abundance and breadth of science needs across the partnership. The SSRF was developed in coordination between CBP's Scientific, Technical Assessment and Reporting team (STAR), the GITs, and STAC. It was specifically designed to consider both short-term operational and long-term fundamental science needs, to integrate STAC recommendations, and to be repeatable and consistent by connecting to the CBP's SRS process. Through the SSRF, the CBP can better look at science needs across the program, assess whether those needs are being met, and recommend approaches to address them.

Example





## Using EJ Screen Chesapeake

### What is *EJ Screen Chesapeake*?

*EJ Screen Chesapeake* is a modified version of the national EJ Screen tool that integrates Chesapeake Bay Program Partnership data resources. It was originally developed as a pilot effort to demonstrate how data important to multiple Outcomes of the Chesapeake Bay Watershed Agreement could be used alongside national environmental justice information to inform decisions throughout the Chesapeake Bay Watershed.





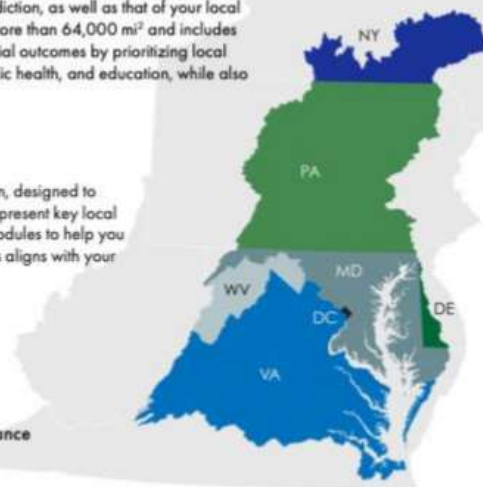
## A Local Government Guide to the Chesapeake Bay EDUCATIONAL MODULES OVERVIEW

A **Local Government Guide to the Chesapeake Bay** is a seven-module series created by the Chesapeake Bay Program to support decision making by local officials. As a local leader, *your decisions set the course for your community*. Your actions determine the health and vitality of your jurisdiction, as well as that of your local waterways and the Chesapeake Bay, which spans more than 64,000 mi<sup>2</sup> and includes seven jurisdictions. You can achieve mutually beneficial outcomes by prioritizing local economic development, infrastructure resiliency, public health, and education, while also protecting your environment.

### ABOUT THE MODULES

Each module is a self-guided PowerPoint presentation, designed to be easily customized and shared. The icons below represent key local government priorities and are used throughout the modules to help you better understand how the information in the modules aligns with your specific priorities and interests.

-  Economic Development
-  Public Health & Safety
-  Infrastructure Maintenance & Finance
-  Education



### HOW TO USE THE MODULES

Each module is a self-guided PowerPoint presentation, designed to be easily customized and shared. All modules contain the slides listed below to identify learning objectives, local case studies, and resources for local implementation.

- **What You'll Learn** provides learning objectives and questions that will be answered throughout the module.
- **What You Can Do** identifies actionable items to engage your community and where applicable, financial assistance to support local actions.
- **To Learn More** provides additional resources for further learning about each of the module topics.

Each module references a variety of statistics and data to support its learning objectives. **Sources** for any referenced statistics, data, and photos can be found within the notes for each of the individual slides. A **glossary** defining keywords can also be found at the end of each module.

## A Local Government Guide to the Chesapeake Bay EDUCATIONAL MODULES OVERVIEW

The modules include the following:



### 1. How Your Watershed Works

*How Your Watershed Works* provides foundational knowledge of the Chesapeake Bay watershed and water cycle and connects the importance of a healthy watershed to the economic development, public health and safety, infrastructure maintenance and finance, and education priorities of local government officials.

### 2. Foundations of Clean Water

*Foundations of Clean Water* provides an overview of the laws and agreements relevant to protecting and restoring the Chesapeake Bay. These protections are the foundations for healthy local waterways across the region.

### 3. Clean Water for the Economy

*Clean Water for the Economy* highlights the economic importance of clean water and healthy habitats to lucrative fisheries, like blue crab and oyster, and recreational activities, like hunting, bird watching, and fishing.



### 4. The Benefits of Trees

*The Benefits of Trees* explains how tree canopy, forest buffers, and forest conservation can provide a broad spectrum of benefits for local communities, from economic development to significant public health and safety benefits.

### 5. Preserving Local Character and Landscapes

*Preserving Local Character and Landscapes* highlights the economic, ecological, cultural, and recreational value of the conserved landscapes around the Chesapeake Bay watershed to the people and communities of the region. Conserving these landscapes protects water quality, quality of life, and many community values associated with these lands.

### 6. Protecting Community Infrastructure Through Stormwater Resiliency

*Protecting Community Infrastructure Through Stormwater Resiliency* provides an overview on how managing stormwater runoff and increasing resiliency can mitigate flooding and related damages to local community infrastructure, while also improving water quality.



### 7. Building the Workforce of Today and Tomorrow

*Building the Workforce of Today and Tomorrow* highlights the growth in stormwater management and green infrastructure projects and the importance of educating a strong and diverse workforce in operating and maintaining projects.



## #1: Brief Summary of Biennial Meeting Next Steps

The Partnership held its **2021 Biennial Strategy Review System (SRS) meeting** on May 12-13.

Follow-up discussions were held by the partners over the next few months and a set of recommendations was developed, including:

- **Changes to the CBP Governance Document (to clarify various roles)**
- **Changes to the SRS processes**
- **Changes to practices and meeting templates.**

The MB approved moving forward with the recommendations and we are in the process of implementing many of them.

## #2: Summary of Outcome Attainability Efforts

- The ***Outcome Attainability Action Team*** continues to meet and work on next steps for framing out and addressing the partnership's outcome attainability issues.
- The **Wetlands** and **Forest Buffers** outcomes have been identified as at-risk of non-attainment and the team has been working with the workgroups to discuss next steps. Additional outcomes are being identified as at risk of non-attainment.
- The Team will be providing an update to the MB at their September meeting and ideas for increasing implementation will be discussed.
- **An update will be provided to the PSC at their late fall meeting.**

*Through the Chesapeake Bay Watershed Agreement, the Chesapeake Bay Program has committed to...*



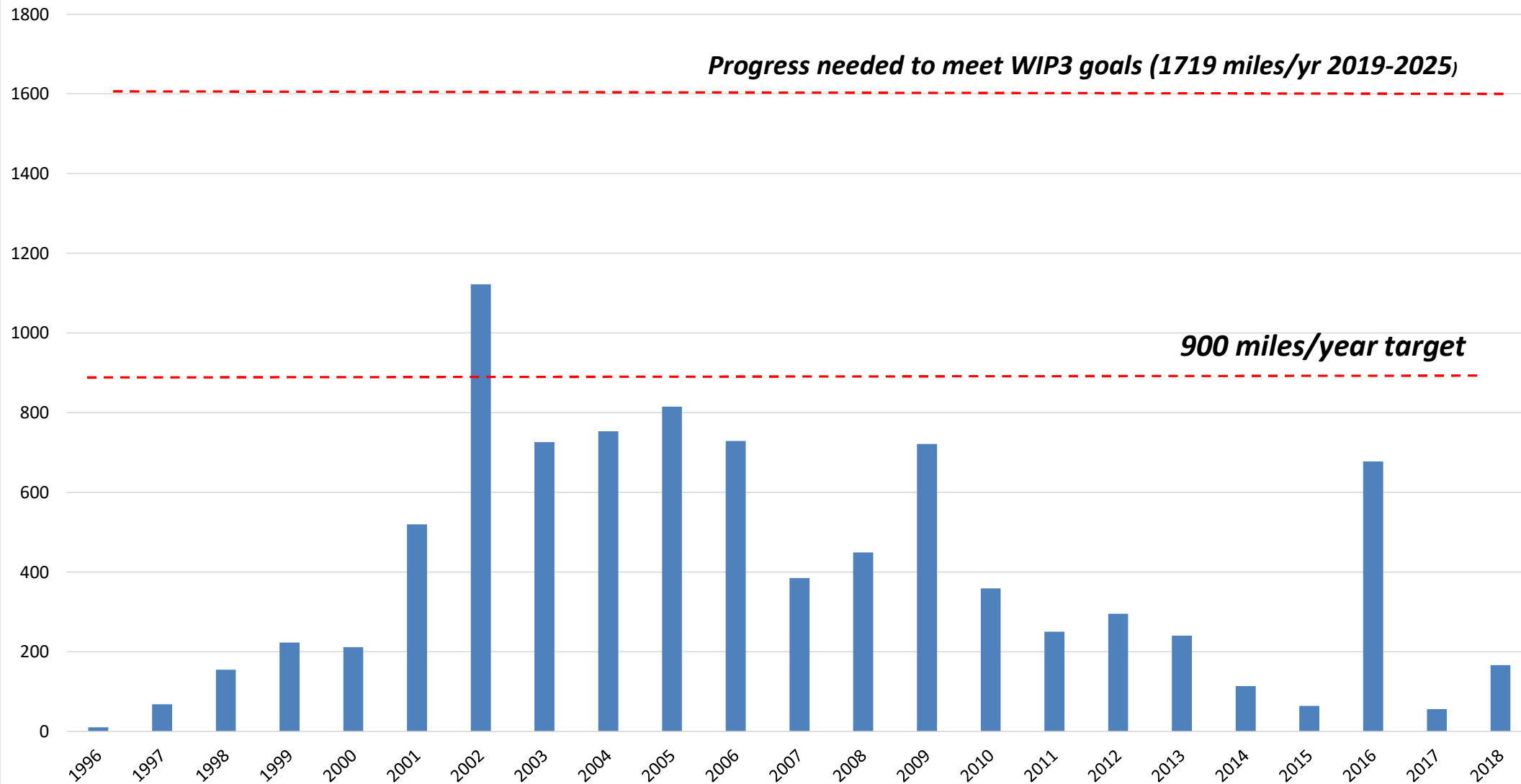
## Vital Habitats Goal

*Riparian Forest Buffer Outcome: Restore 900 miles per year of riparian forest buffer and conserve existing buffers until at least 70 percent of riparian areas throughout the watershed are forested.*

## Miles of Riparian Forest Buffers Planted in the Chesapeake Bay Watershed

*Progress needed to meet WIP3 goals (1719 miles/yr 2019-2025)*

*900 miles/year target*





*Through the Chesapeake Bay Watershed Agreement, the Chesapeake Bay Program has committed to...*



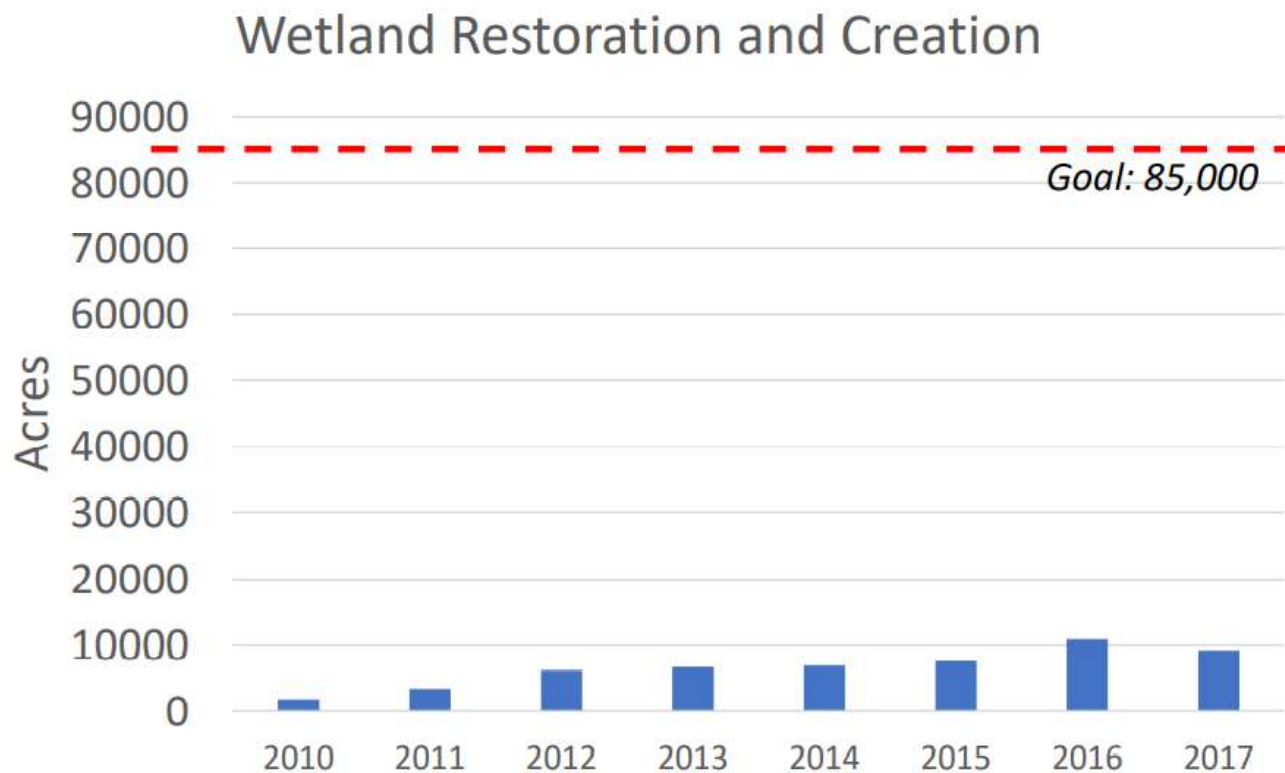
## Goal: Vital Habitats (*WETLANDS*)

### Outcome:

Continually increase the capacity of wetlands to provide water quality and habitat benefits throughout the watershed. Create or reestablish 85,000 acres of tidal and non-tidal wetlands and enhance function of an additional 150,000 acres of degraded wetlands by 2025. These activities may occur in any land use (including urban), but primarily occur in agricultural or natural landscapes.



## What is our Expected and Actual Progress?



- Lack confidence- Accounting for TMDL not wetland areal extent
- No Tidal Wetlands included (looking at shoreline management data)
- Almost no Enhancement due to issues with NEIEN

# Outcome Attainment Report

The MB will present a full report to the PSC (late fall) on the status of achieving all 31 outcomes (best understanding) focusing on:

## 1. Outcomes with *quantitative targets*:

- Those that are showing that they are currently on track (if we maintain current efforts);
- Those that are significantly off-track and what our next steps are; and
- Those where we don't have a full accounting of progress and what our next steps are;

## 2. Outcomes with no quantitative targets or timeline to achieve them

- Qualitative progress descriptions

**Is there anything else the PSC wants us to consider for the report?**

### #3: Update to EC on Management Strategy Progress

- The 2014 Watershed Agreement commits the PSC to providing an ***update on management strategy implementation*** to the Executive Council every two years. GIT 6 and the SRS Planning Team are working with the Outcome Attainability Team in a combined effort to prepare for a report to the EC during its December 2021 meeting.
- The SRS Planning Team is looking for PSC agreement on what and how to report to the EC.
- OPTION: the annual **State of the Program** report could **identify those outcomes that are at risk of non-attainment**. **Supporting materials:**
  - STAC Evaluation of System Response report
  - CBP Monitoring Report (may not be ready for Dec. PSC mtg.)



**Additional PSC questions or comments?**