



Protected Lands Data Standardization Network

Kickoff Meeting

1/15/26

Agenda

- Welcome & Introductions
- Background & Context
- Project Scope
- Jurisdictional Perspective



An aerial photograph of a vast wetland landscape. A winding river flows through a lush green marsh, creating a complex network of channels and islands. The water is a deep blue, contrasting with the vibrant green of the marsh grass. In the background, a line of trees and a small body of water are visible under a clear sky.

Welcome & Introductions

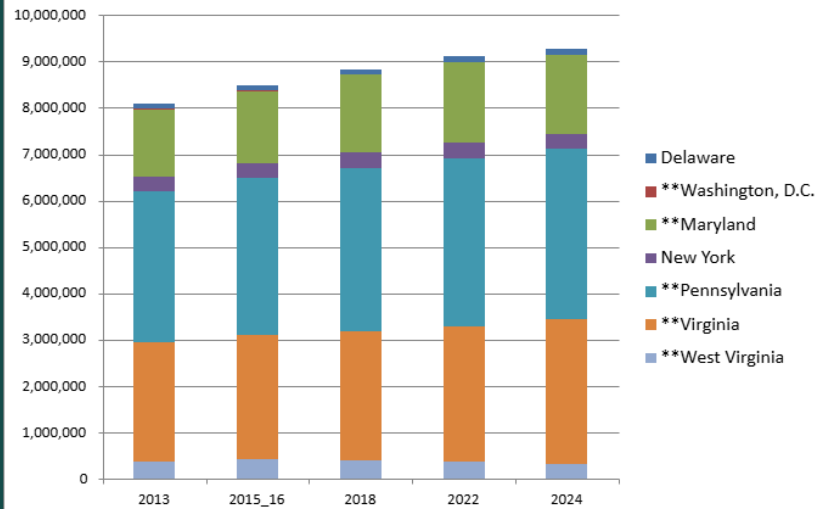
*Please introduce yourself! (name,
agency, and role)*

*Ice Breaker question: What is your
favorite winter activity?*

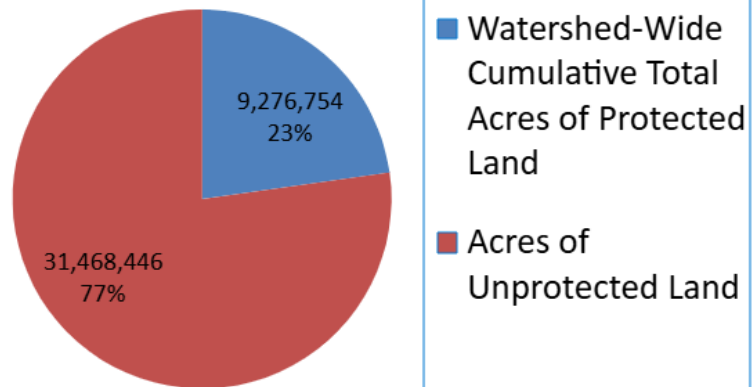


Background & Context

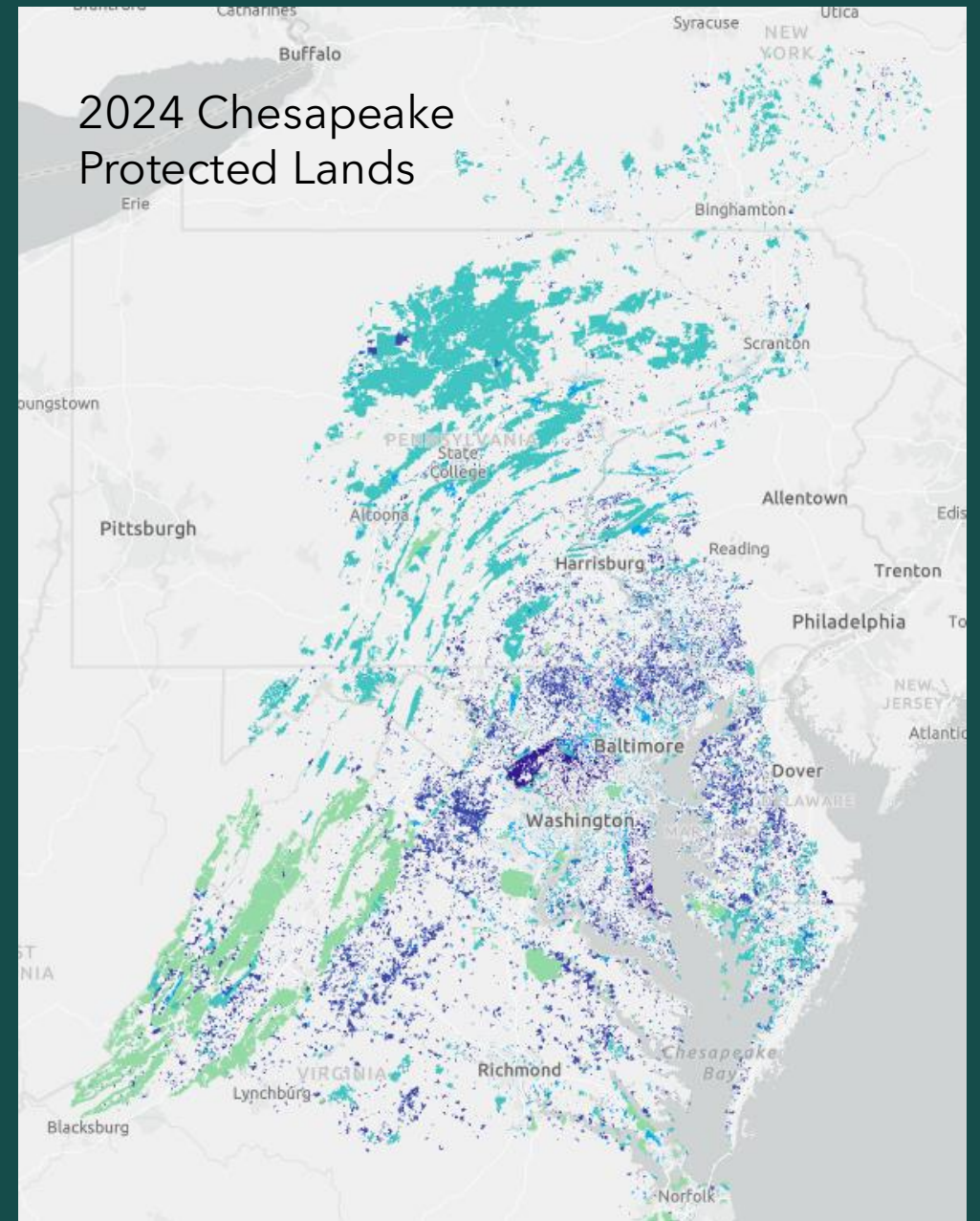
Acres of Protected Land in the Chesapeake Bay Watershed - by Jurisdiction



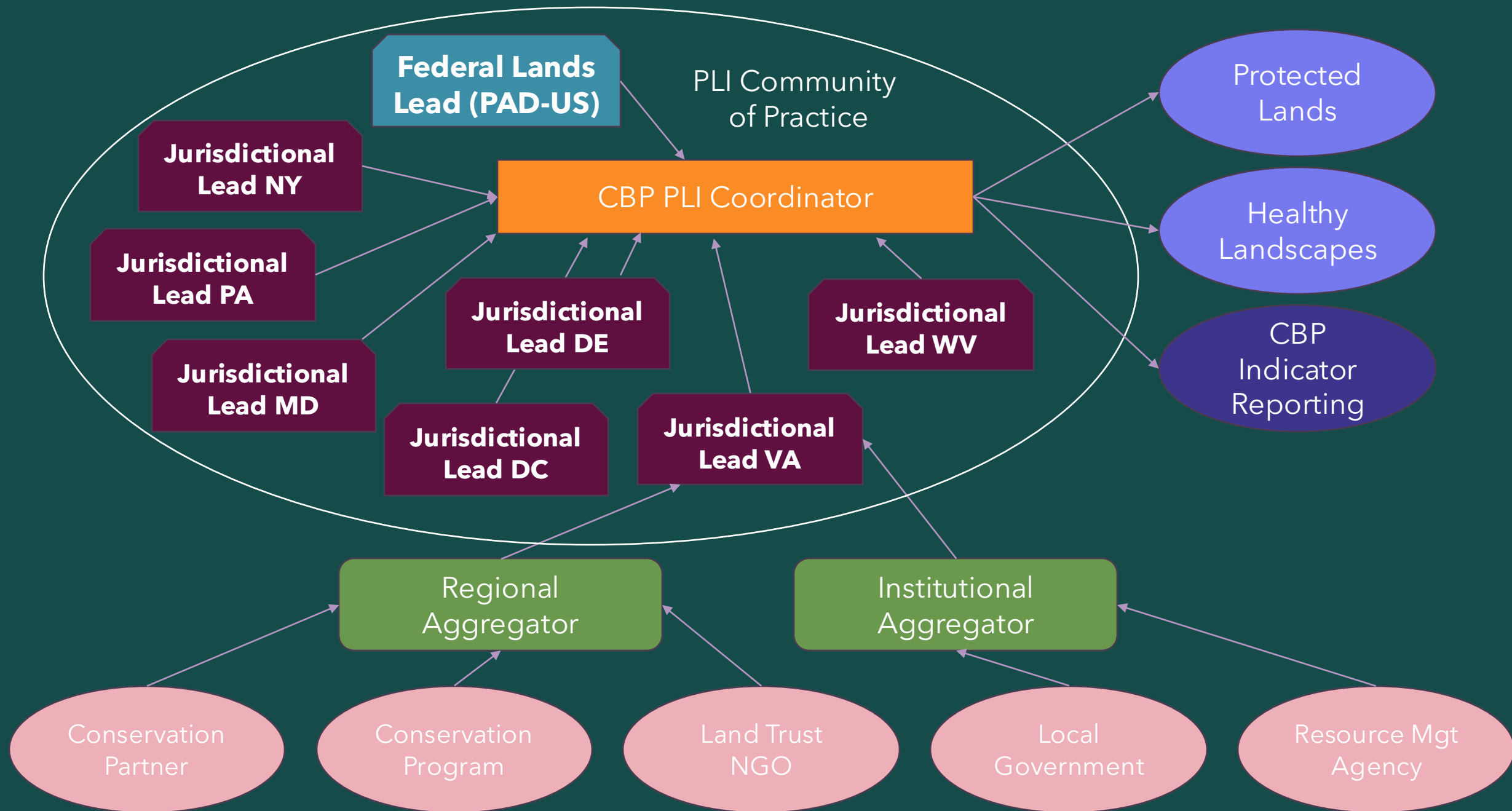
Total Acres of Protected Land in the Chesapeake Bay Watershed through 2024



2024 Chesapeake Protected Lands



PLI Data Aggregation and Reporting



Essential Protected Lands Data Standards and Best Practices

Attribute Field	
Aggregator Source	Local Owner
Category	Owner Name
CBP Owner Type*	Owner Type
Date of Establishment	Public Access
Easement Holder Type (NCED)	Property Name*
Easement Holder (NCED)	Raster Owner*
GIS Acres	Source Protected Area ID
GIS Source	State Name
GIS Source Date	Unit Name
Local Name	

Bolded fields are PAD-US **Minimum Required Attributes**

* CBP data attributes

2023 CBP PLI Data Standard

- Was not enforced for 2025
- Only 2 Jurisdictions would have met an 80% threshold for **Date of Establishment**[^]
- No Jurisdiction would have met a 100% threshold for all PLI "Required Fields"*



General PLI Data Quality Issues

- Inconsistent schema usage (74% Non-Compliant w/PADUS 3.1 Schema)
- Duplicate and overlapping polygons (76% of records overlap by $\leq 25\%$)
- Omission of required attribute data
 - Date of Establishment (Missing in 38% of records)
 - GAP Status (Missing in 45% of records)
 - Public Access (Missing in 36% of records)
- Unique masking requirements by jurisdiction
- Inconsistent with PAD-US dataset
 - Not the same data sources
 - PAD-US uses The Nature Conservancy, The Conservation Fund, and The Trust for Public Lands

Past Indicator Issues



USGS employees have cleaned jurisdiction data for use with the Protected Lands Indicator.

Clean up can delay release of PLI

Data submitted not being in the suggested schema, or the required schema elements not being fully attributed.

Example: Own_Type not completely attributed

Missing key data

Example: Local lands are missing in some jurisdictions' data

Carrying over of past issues in the indicator code

Merging new data to previous version of PLI

Project Scope



Components of Data Standardization and Data Cleanup



Attribution of DoE

- NFWF-funded project to fill DoE gaps

Standard PLI Schema

- Consensus on the PLI schema
- What fields should be required?

Improve Attribution Completion

- Attribution completion goals
- How will missing data and non-compliant submissions be treated?

Standardization
Network's Focus

Questions to Consider



- Should we proceed with implementing a revised PADUS schema?
- Which attribute fields should be included in the data submitted for the Protected Lands Indicator?
- What percentage of the dataset must be fully attributed for inclusion in the Protected Lands Indicator?
- What efforts have jurisdictions undertaken to enhance data quality?
- What level of effort would be required for jurisdictions to fully populate the existing schema?
- Is it realistic to have a new standard by 2027?
- How often should we be meeting?

Jurisdictional Perspective



Jurisdiction Questions



- Do we have the right people at the table? Who else from your jurisdiction needs to be present for these meetings?
- What challenges do you foresee when it comes to improving your jurisdiction's data?
- What standardization and quality control have you done to your jurisdiction's data in the recent past?
- What can your involvement with this community of practice realistically look like?
- How can the Bay Program make your involvement worthwhile?