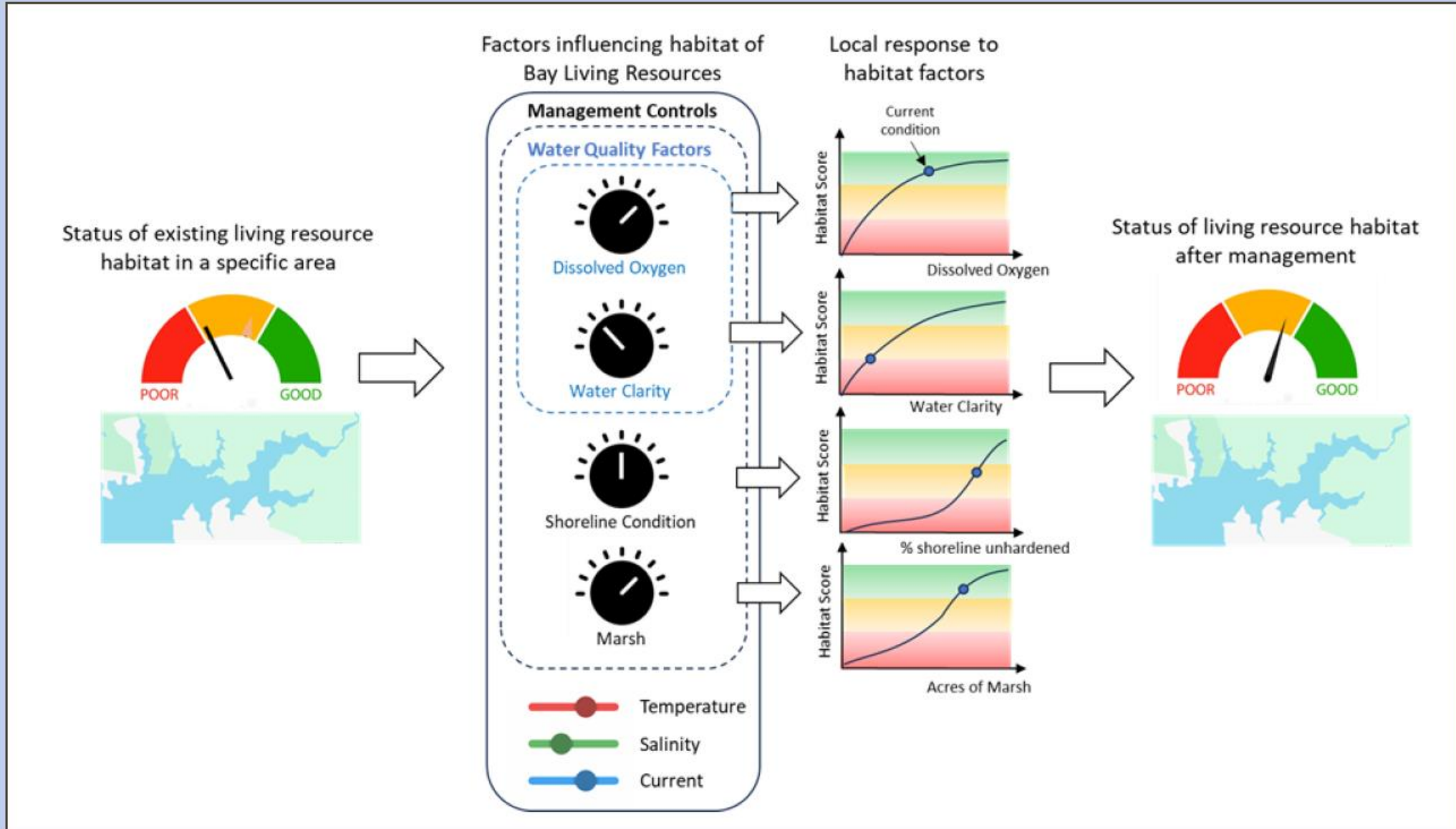


# Living Resources Assessment: Update for STAR

August 28, 2025

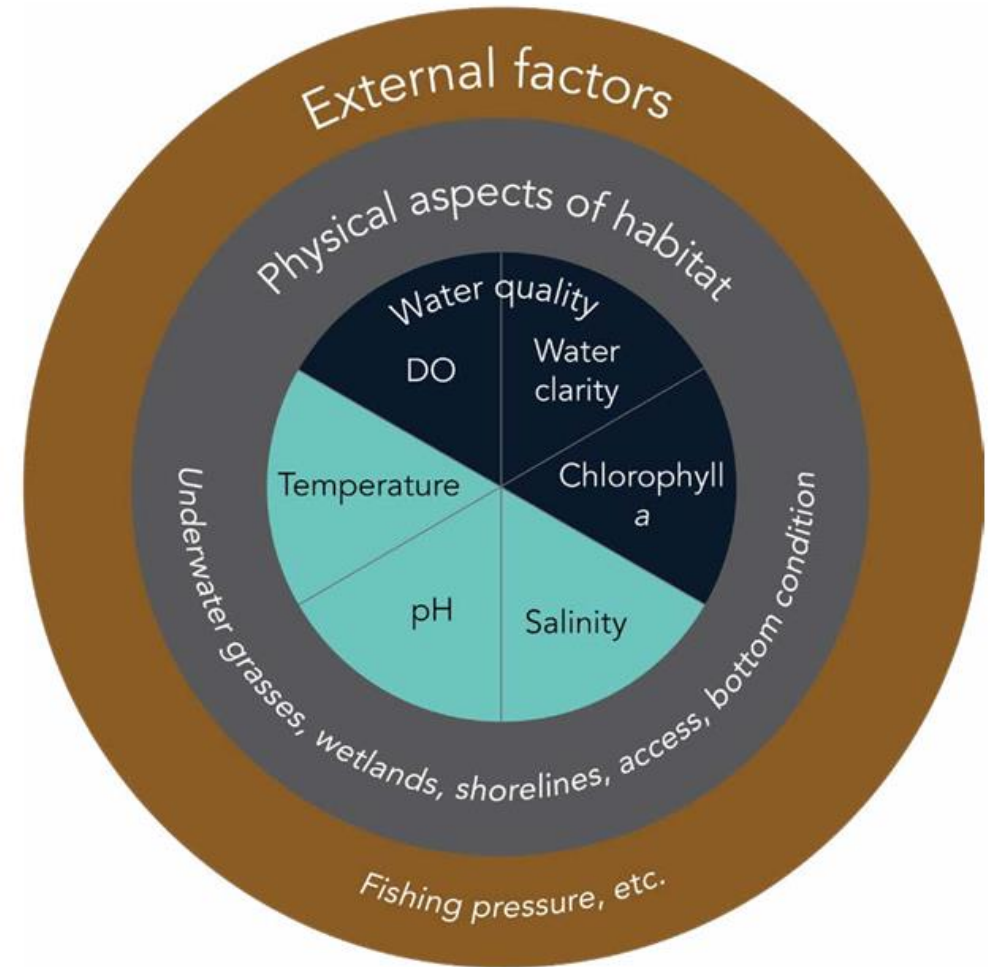
# Assessing local water quality, stressor, and habitat conditions



# Opportunity to Link

---

1. Water quality management decisions
2. Potential improvements in tidal living resource responses



Managed by Bay water quality standards

Generally unmanaged and impacted by changing environmental conditions

# Big Picture View

- Fast track to complete a habitat suitability model for the 92 tidal segments of the Chesapeake Bay by 2026
- This project is a priority of the CBP
- Analysis is a step to:
  - 1) Implement recommendations of the CESR report
  - 2) Identify target areas for tiered implementation/targeting
  - 3) First step to implementing the Fish Habitat Outcome under the revised Bay Agreement

# Priority Living Resource Habitat Area – identification/quantification

<b>Group Assigned</b>	Fisheries GIT
<b>Task Description</b>	Develop Priority Living Resource Habitat Areas for 92 segments of the Tidal Bay
<b>Task Rationale</b>	CESR report suggests that focus should be given to shallow waters/living resources in addition to meeting the goals of the Bay TMDL. This activity will identify priority living resource areas and give scoring metrics to assist in prioritization of restoration and conservations efforts.
<b>Task Outcome/ "End" User</b>	WIP/Milestone Developers - Will provide critical information to allow/support <b>tiered implementation targets/focused restoration efforts</b>
<b>Assignment (Objective)</b>	Develop a habitat suitability model that focuses on shallow water <ul style="list-style-type: none"> <li>Select species/life stages representative of Bay LR</li> <li>Determine appropriate habitat variables to evaluate for the above               <ul style="list-style-type: none"> <li>Water quality</li> <li>Physical characteristics</li> <li>Temperature</li> <li>Etc.</li> </ul> </li> <li>Develop habitat rating/scoring for geographic area's of the bay (all 92 segments)</li> <li>Develop GIS based data visualization of LR habitat suitability at the highest resolution available.</li> </ul>
<b>MB Champion:</b>	VA/MD/DC should have oversight
<b>Coordination Requirements (MB check-in frequency)</b>	<ul style="list-style-type: none"> <li>January 1, 2026 – draft habitat suitability model complete</li> <li>July 1, 2026 – habitat suitability scoring matrix complete</li> <li>January 1, 2027 - data visualization tool to utilize suitability model and scoring matrix complete</li> <li>Should be reported on with Tiered Implementation Targets</li> <li>Should be reported on with Priority Living Resource Scoring Matrix</li> </ul>
<b>Delivery Date (Month or Quarter / Year)</b>	January 1, 2027
<b>CBPO Support</b>	GIS Team, Modeling Team, LR data manager

## Motivation & Context

### Priority Living Resource Habitat Area -Identification/Quantification

-Task meant to drive a result, not just to improve understanding

-Tie to management priority, tie to water quality and improve living resource outcomes

\*February 2026  
Fish data are taking longer to compile than originally planned

# Charette Outcomes (May 2025)

## Project Management

Bruce Vogt (NOAA), Kaylyn Gootman (EPA)

## Teams

- 1) Management Relevancy Team (NOAA, EPA)
- 2) Analysis Team (VIMS, UMCES, NOAA, EPA)

## Workplan

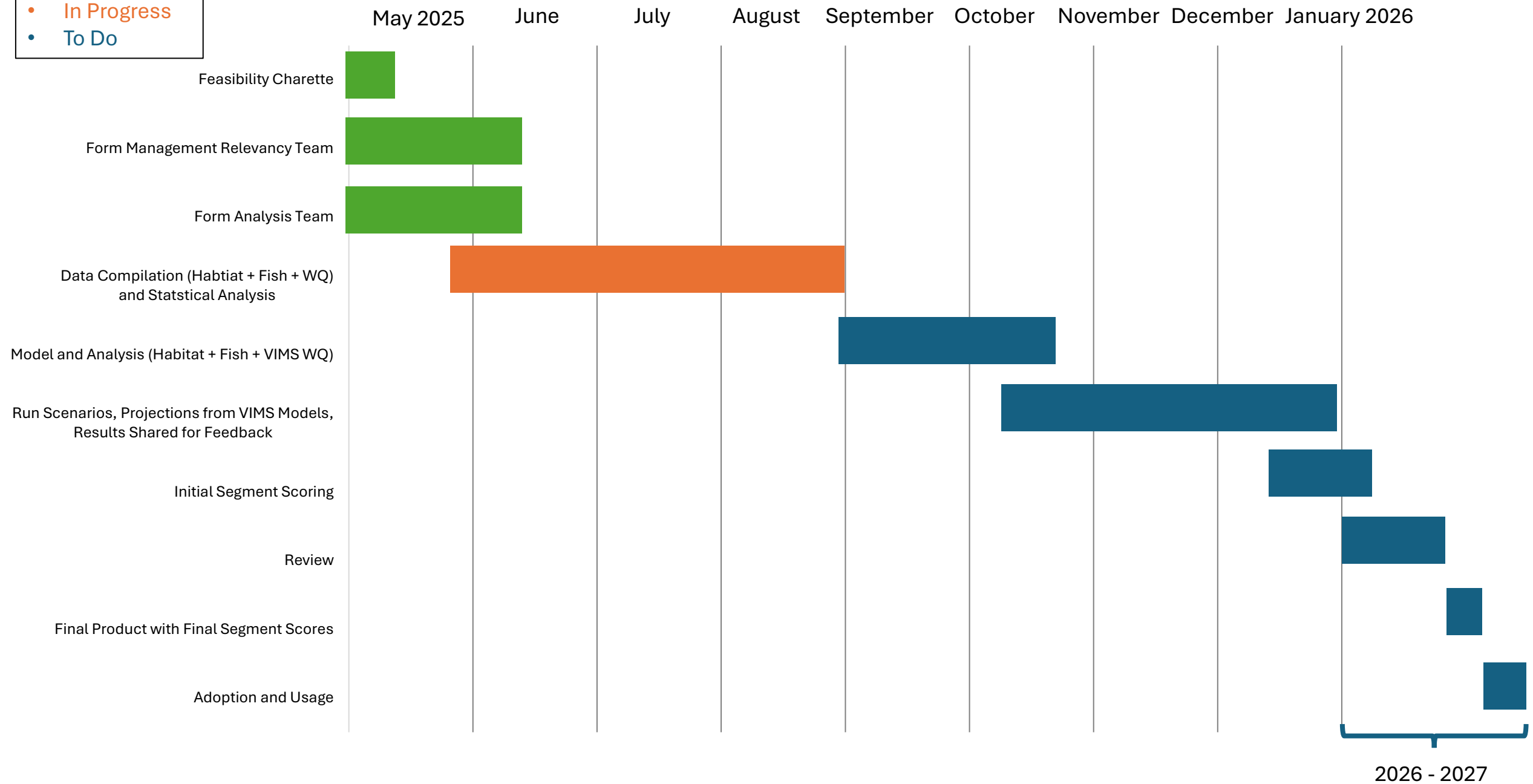
Gantt chart on next slide

Legend

• Complete

• In Progress

• To Do



# Project Support

## Scientific and Technical Advisory Committee (STAC)

- Members on the project team
- Members coordinate review

## Chesapeake Research Consortium (CRC)

- Coordinate the merit review
- Help with communications
- Coordinate the hybrid meeting of the do-ers (October)
- Technical editing of merit review
- Potential infographics support via Greenfin

## Chesapeake Bay Program Data Center

- As needed consult

## Chesapeake Bay Program Geospatial Analysis Team (GSAT)

- Public facing viewer/tool
- Potential Plan B doers

## Chesapeake Bay Program Communications Team

- Develop communication pieces, webinars



# Data Sets

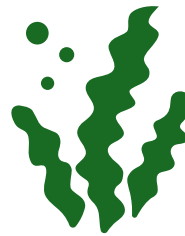


## Water Quality Data

Initially from Fish Data

VIMS model

(Later, Phase 7)



## Habitat Data

Substrate

Tidal Wetlands

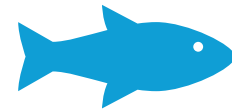
SAV

Bathymetry

Oysters

Shoreline

Others



## Fish Data

Juvenile Striped Bass

Bay Anchovy

Croaker

# Workflow

