



# Black Duck Outcome

*Ben Lewis, VA DGIF  
Black Duck Action Team Lead*

*Through the Chesapeake Bay Watershed Agreement, the Chesapeake Bay Program has committed to...*



## Goal: Vital Habitats Goal

**Outcome:** *By 2025, restore, enhance, and preserve wetland habitats that support a wintering population of 100,000 black ducks, a species representative of the health of the tidal marshes across the watershed.*

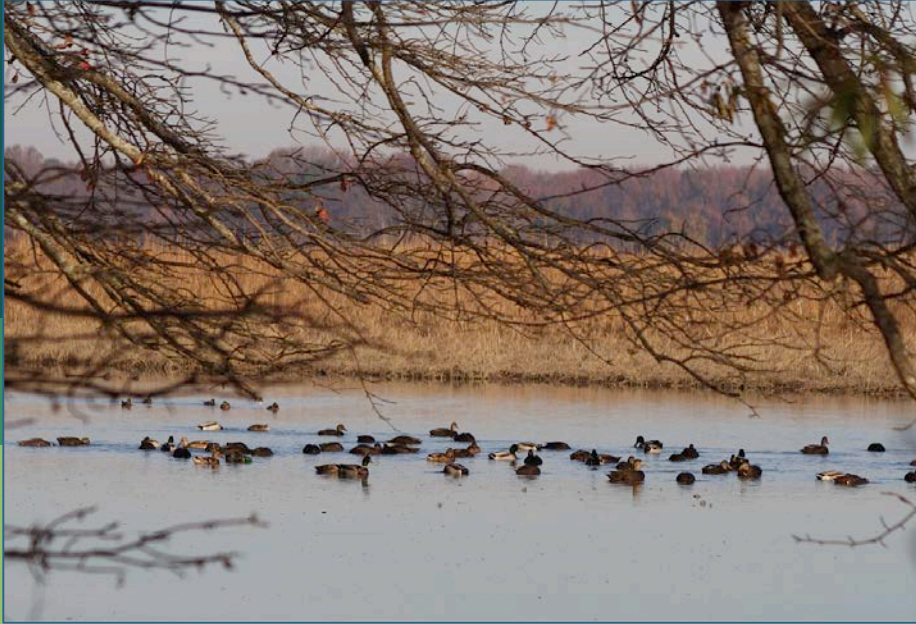
# Baseline and Current Condition

- NAWMP Continental Population Goal of 640,000 Black Ducks
- Estimated that the CB watershed could support 100,000
- Mid-Winter Survey
  - 2007-2009: 37,158
  - 2009-2011: 47,269
  - 2011-2013: 41,907
  - 2012-2014: 48,828
  - 2013-2015: 51,332





## What We Want



Support in applying the latest science to inform new acreage based Outcome indicator

- Technical assistance with establishing a new baseline, acreage targets
- Assistance with DST outreach to decision makers
- Assistance with funding for projects in target areas
- Encouragement of strong partner coordination

# 1

## Setting the Stage:

*What are our assumptions?*



## Logic Behind Our Outcome

### Following the Decision Framework:

#### Factors Influencing

- Habitat Degradation
- Scientific Research
- Technical Understanding / Implementation

#### Current Efforts and Gaps

- Location of opportunities for Habitat Conservation
- Need for Technical Assistance
- Scientific Research
- Carrying Capacity and Bioenergetics Modeling

#### Management Approaches

- Support Black Duck Habitat
  - Restoration
  - Enhancement and Management
  - Protection
- Other Conservation Actions Benefiting Waterfowl Habitat

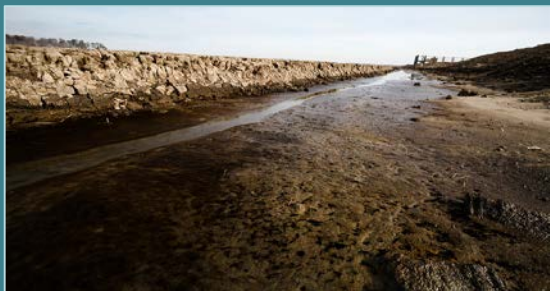
2

# Progress:

*Are we doing what we said we would do?*



## What is our progress?



### Supporting Restoration, Enhancement, and Conservation Work

- NGO's
- States/Jurisdictions
- Federal Agencies
- WLFWL







## What is our progress?



### GIT Funding

- Funding for NRCS Working Lands for Wildlife Technical Assistance Position
- Funding to complete Black Duck DST





## What is our progress?

- Better science and tools to target habitat conservation and restoration
- Increased landowner outreach capacity
- Cross-outcome benefits (wetlands, climate change, shorelines, SAV, etc.)



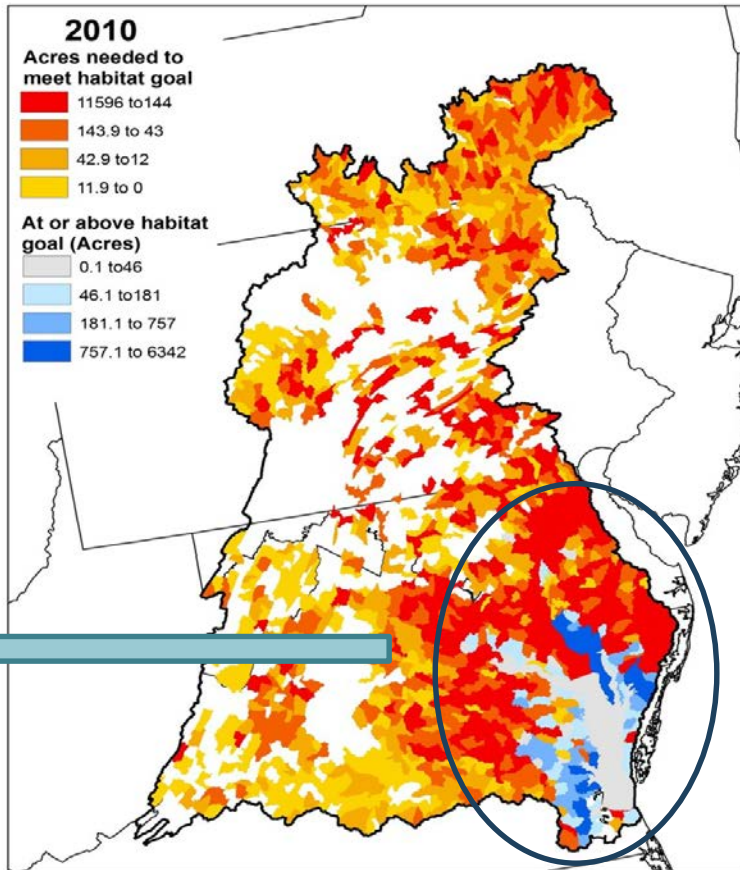
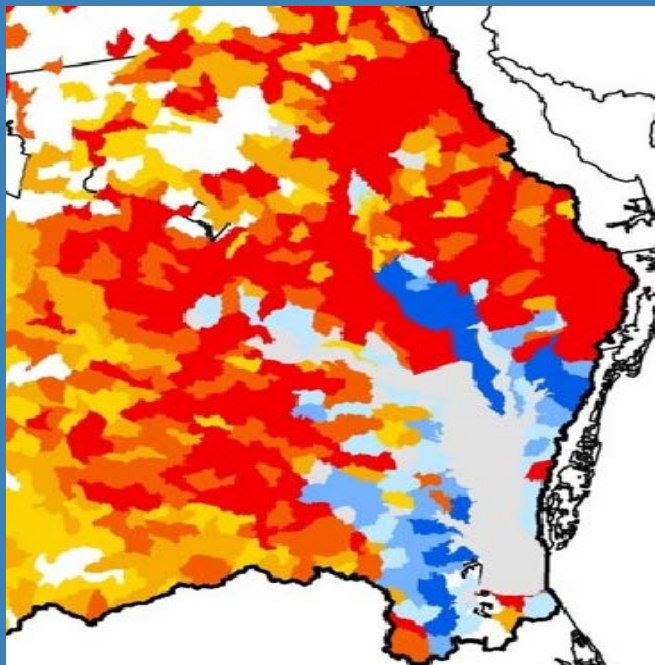
Bioenergetics model and Black Duck habitat needs under future landscape condition maps complete.



Further evidence of SAV as important Black Duck food source.

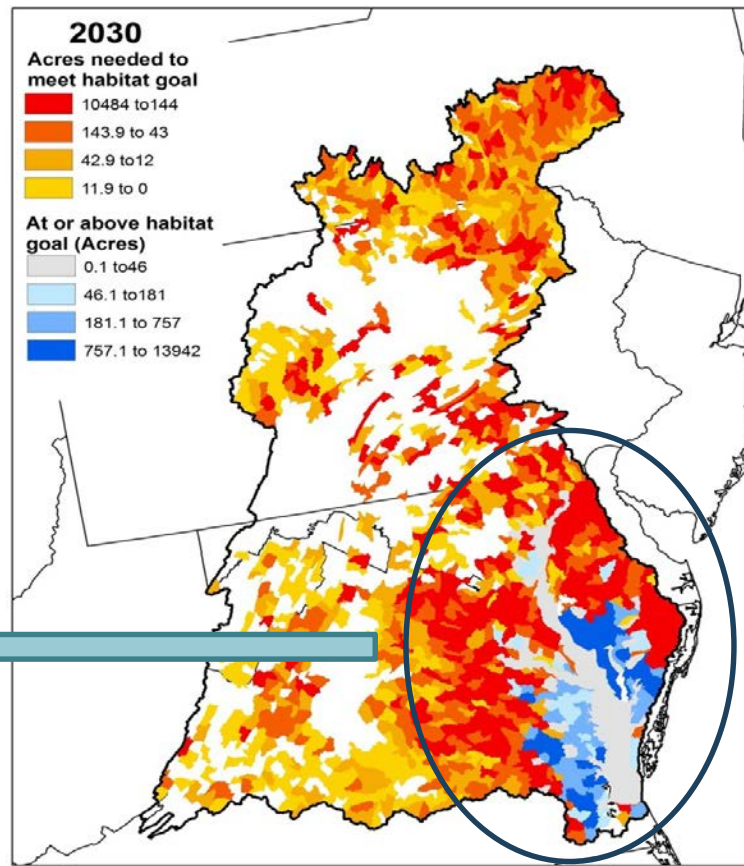
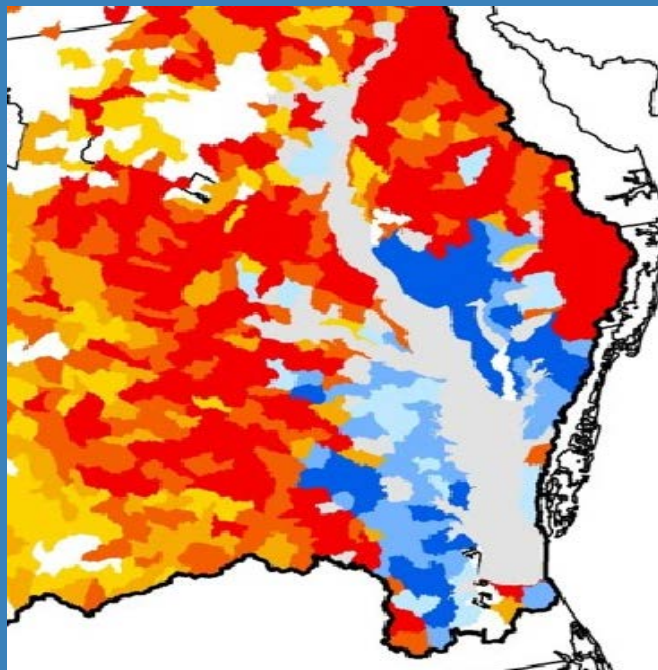


## Black Duck Habitat Needs Under Future Landscape Conditions





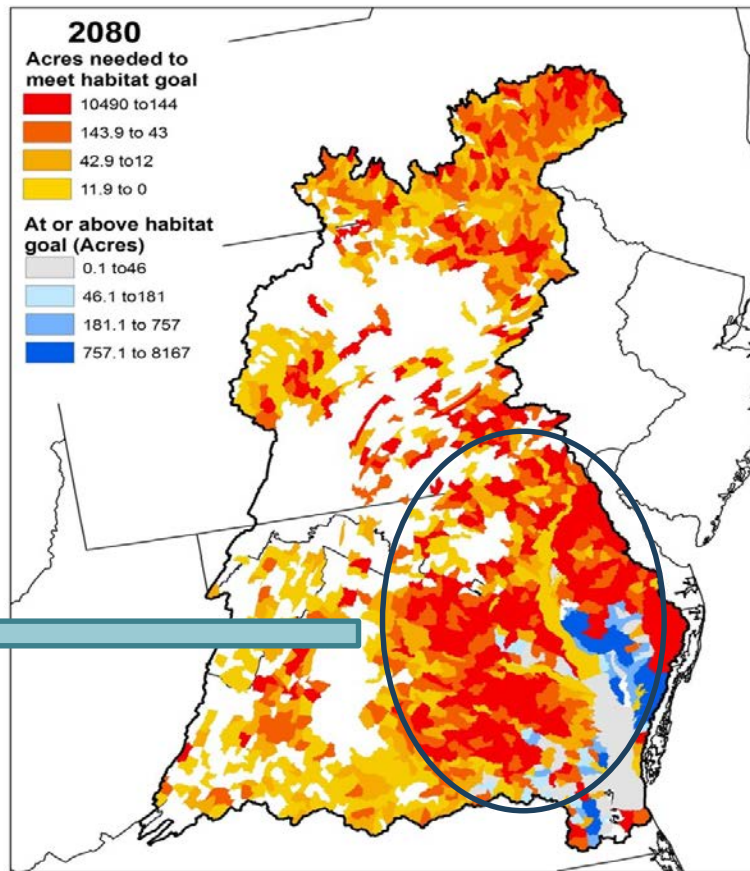
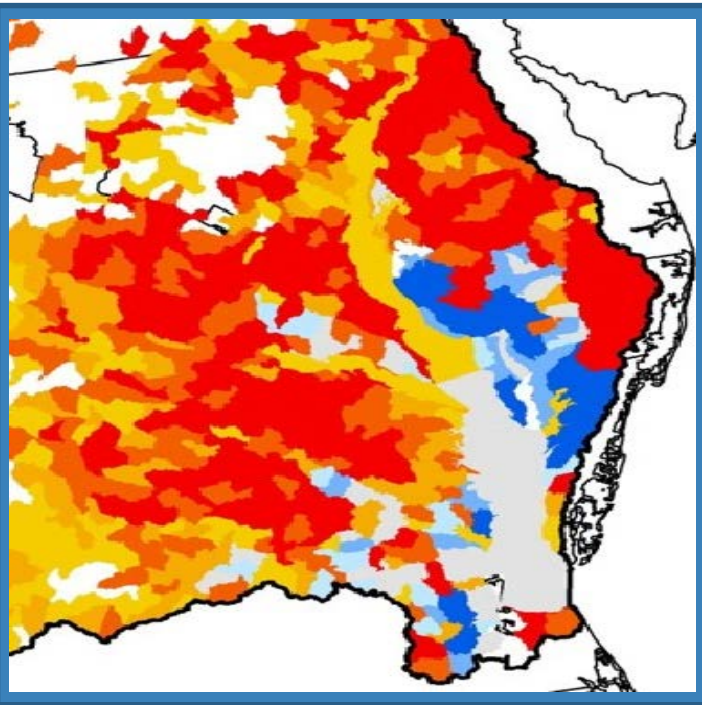
## Black Duck Habitat Needs Under Future Landscape Conditions







## Black Duck Habitat Needs Under Future Landscape Conditions






## What is our progress?


### Surplus HUC12s and Protected Lands

#### Legend


 Protected Lands

#### CBWS\_HUC12\_final\_surplus

2030 Protection Quality relative to other HUCs

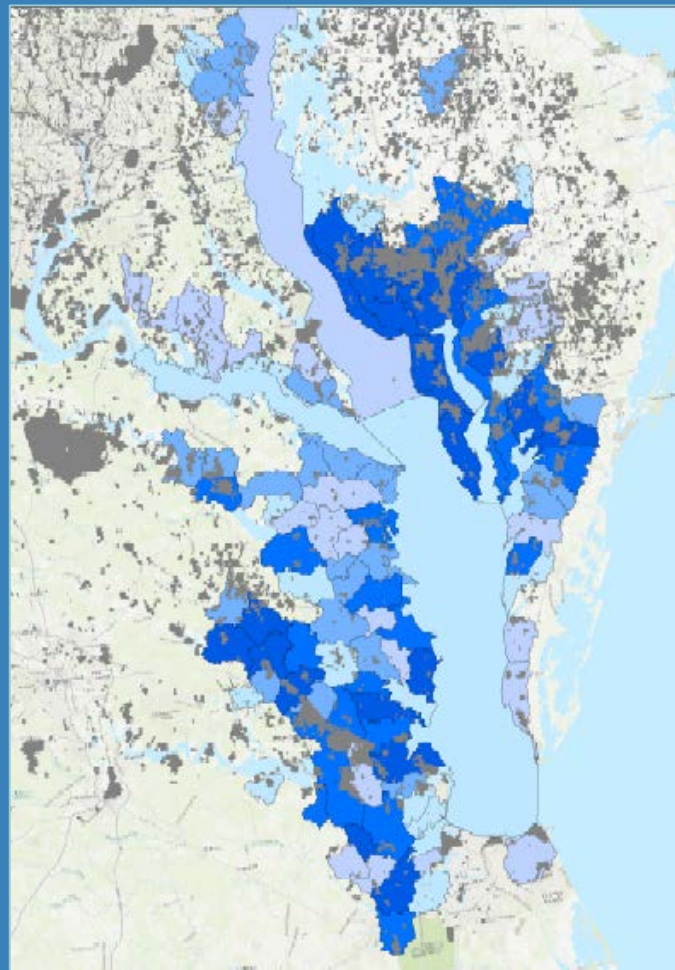
 Lowest

 Low

 Medium

 High

 Highest





## What is our progress?

### CBP Cross-GIT Mapping Project – Black Duck Case Study Output

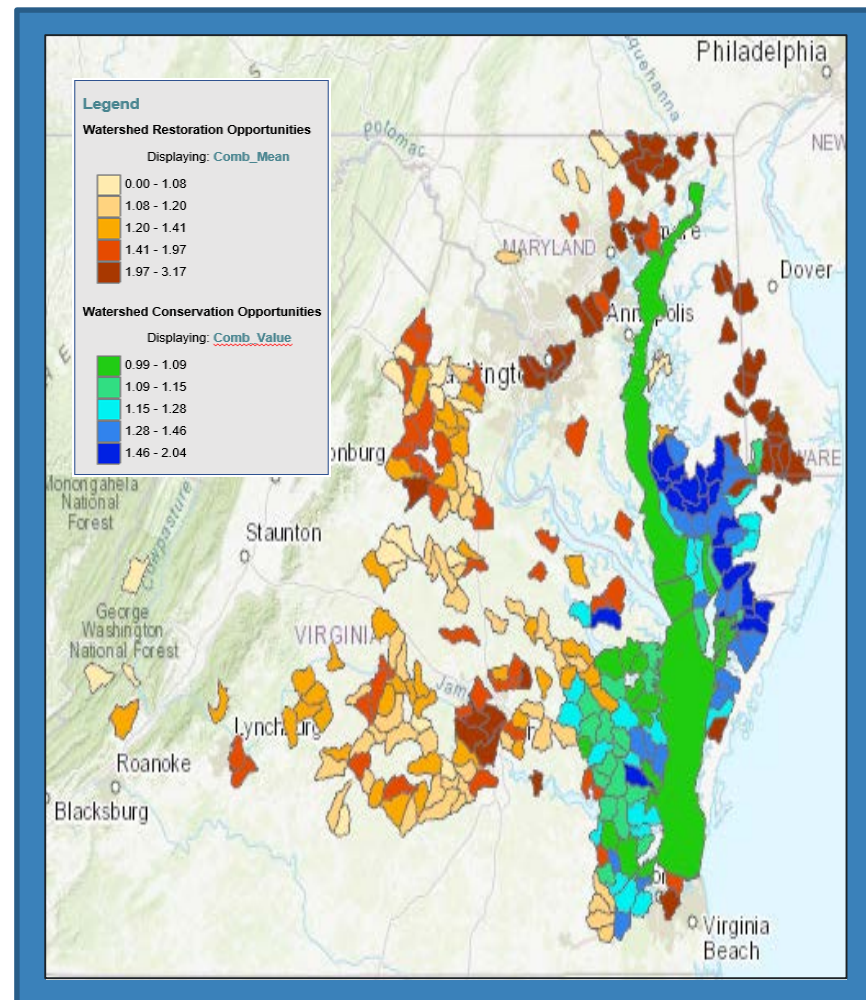
#### Restoration Metrics –

- Wetlands
- High pollution loading
- Marsh migration
- Low food availability

#### Conservation Metrics –

- Wetlands
- Healthy Watersheds,
- High food availability
- Marsh Migration

**Brown**  
(restoration) and  
**Blue**  
(conservation) =  
Higher co-benefit  
potential

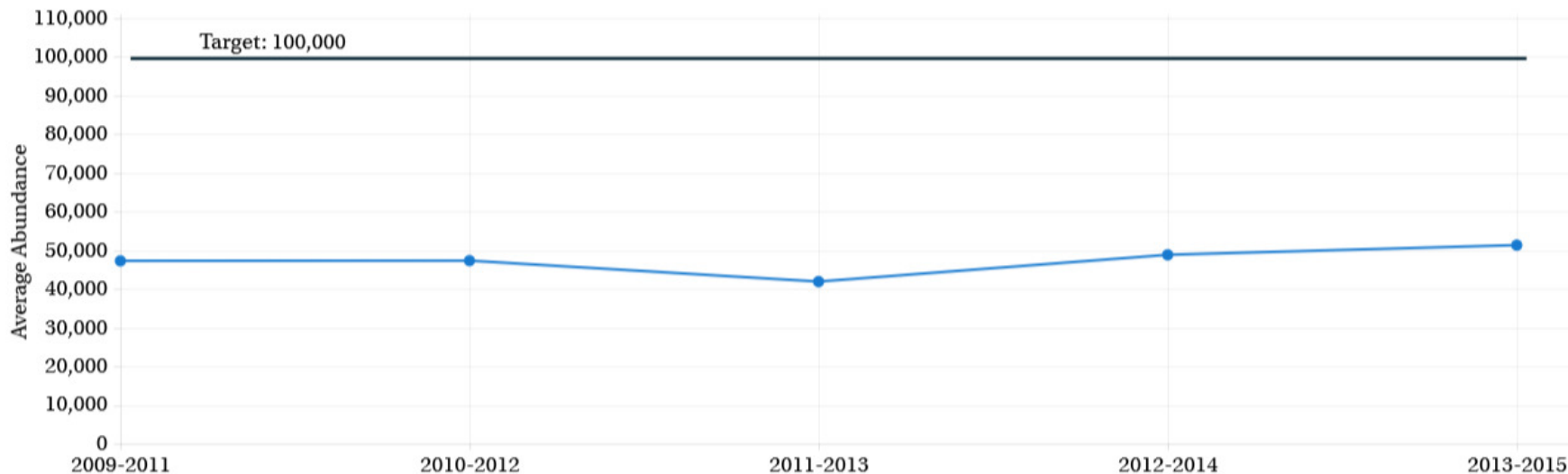




## Are we on track?

### Wintering Black Ducks in the Chesapeake Bay Watershed (2009-2015)

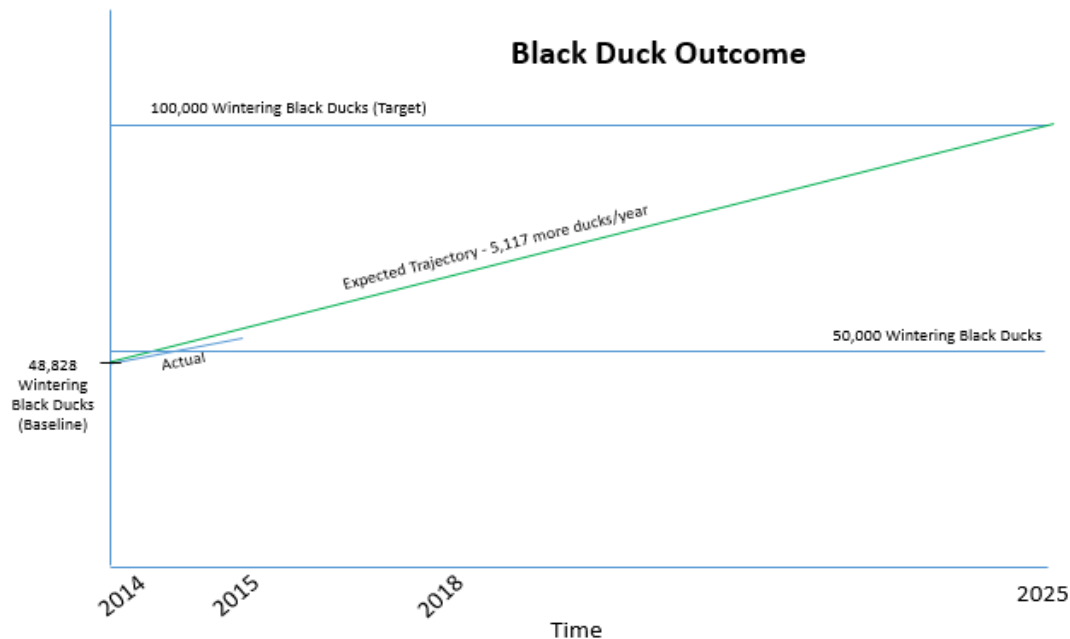
Average black duck abundance as observed during the U.S. Fish and Wildlife Service Mid-winter Waterfowl Survey.







## Are we on track?



### Indicator Status

- As of 2015, the Black Duck Outcome stands at 51% of it's 100,000 bird goal.
- CBP has not received Chesapeake Bay Watershed population data since 2015 as USFWS no longer maintains survey data.

A **habitat based indicator** would be more reflective of true outcome progress.



**Are we on track?**



Reach out to Partners to Track Conservation Acres



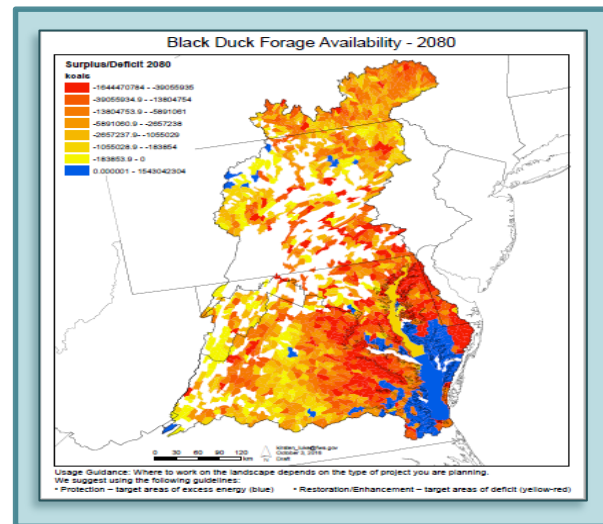
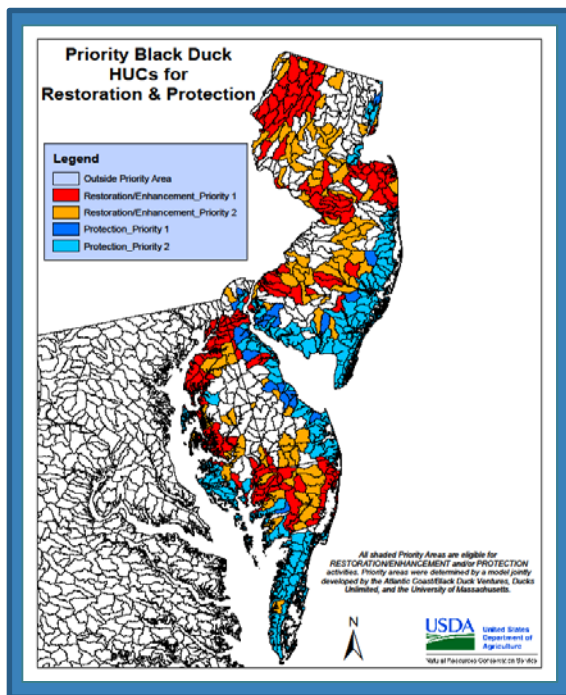
DEPARTMENT OF  
**GAME & INLAND  
FISHERIES**  
CONSERVE. CONNECT. PROTECT.





## Analysis

Discussion Question 2: Which actions were most critical in progress thus far?



Completion of the bioenergetics model and map outputs.

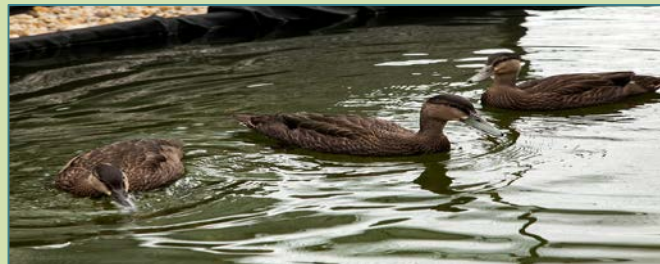


## Analysis

Discussion Question 3: Which actions will be the most critical to your progress in the future? Why?



Using the DST maps to determine the best locations for restoration, enhancement, and management of habitat for black ducks.



Determining Acreage Component to Black Duck outcome. I.e. how many acres of habitat would we need to reach our goal

# 3

## Challenges:

*Are our actions having the expected effect?*



## Challenges



Determining Acreage Goals for Outcome



Getting the DST Map in User Friendly Format



Conservation Partner Training and Use of DST



Diminished funding and resources (i.e. Mid-winter Survey)



# 4

## **Adaptations:**

*How should we adapt?*



## Based on what we've learned, we plan to...



Articulate Acreage Component to the Black Duck Outcome



Adopt new habitat based Black Duck Outcome indicator using bioenergetics model/DST



Develop a priority list of HUC12s/state for conservation and restoration (25<sup>th</sup> Percentile Map)



Improve coordination with partners and local agencies





# Co-Benefits



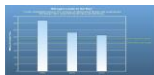
## Sustainable Fisheries

- Blue Crab Abundance
- Blue Crab Management
- Oyster
- Forage Fish
- Fish Habitat



## Vital Habitats Goal

- Wetlands
- Black Duck
- Stream Health
- Brook Trout
- Fish Passage
- Submerged Aquatic Vegetation (SAV)
- Forest Buffer
- Tree Canopy



## Water Quality Goal

- 2017 Watershed Implementation Plans (WIP)
- 2025 WIP
- Water Quality Standards Attainment and Monitoring



## Toxic Contaminants Goal

- Toxic Contaminants Research
- Toxic Contaminants Policy and Prevention



## Healthy Watersheds Goal

- Healthy Waters



## Stewardship Goal

- Citizen Stewardship
- Local Leadership
- Diversity



## Land Conservation Goal

- Protected Lands
- Land Use Methods and Metrics Development
- Land Use Options Evaluation



## Public Access Goal

- Public Access Site Development



## Environmental Literacy Goal

- Student
- Sustainable Schools
- Environmental Literacy Planning



## Climate Resiliency Goal

- Monitoring and Assessment
- Adaptation Outcome



## What We Want



Support in applying the latest science to inform new acreage based Outcome indicator

- Technical assistance with establishing a new baseline, acreage targets
- Assistance with DST outreach to partners and decision makers
- Assistance with funding for projects in target areas
- Encouragement of strong partner coordination



# Discussion