

Measuring and Changing Stewardship Behaviors

Suzanne Etgen



Why are Individual Stewardship Action Important?

64,000 square miles

6 states + DC

1,800 local governments

18 million people

150,000 move into the Bay watershed per year

Photo Credit: Jon Bilous/Shutterstock

Our Bay

AFFIRMATION

As Chesapeake Bay Program Partners, we recognize the need to accelerate implementation of actions necessary to achieve the Goals and Outcomes outlined herein and realize our shared Vision of a healthy and vibrant Chesapeake Bay watershed.

As Chesapeake Bay Program Partners, we acknowledge that this Agreement is voluntary and subject to the availability of appropriated funds. This Agreement is not a contract or an assistance agreement. We also understand that this Agreement does not pre-empt, supersede or override any other law or regulation applicable to each signatory.

We, the undersigned members of the Chesapeake Executive Council, re-affirm our commitment to support the Goals of this Agreement and to work cooperatively in its implementation. We agree to work both independently and collaboratively toward the Goals and Outcomes of this Agreement and to implement specific Management Strategies to achieve them. Every citizen of this great watershed is invited to join with the Partnership, uniting as a region and embracing the actions that will lead to success.

Date: June 16, 2014

For the Chesapeake Bay Commission



Ronald E. Miller

For the State of Delaware



Del Mahill

For the District of Columbia



Vernon C. Gray

For the State of Maryland



Arthur Staley

For the Commonwealth of Pennsylvania



Tom Corbett

For the State of New York



Andrew Cuomo

For the Commonwealth of Virginia



Eric D. Hoffer

For the State of West Virginia



Carl Ray Tomblin

For the United States of America
on behalf of the Federal Government and the
Federal Leadership Committee for the Chesapeake Bay:



Jim McClure

U.S. Environmental Protection Agency

U.S. Department of Agriculture

U.S. Department of Commerce

U.S. Department of Defense

U.S. Department of Homeland Security

U.S. Department of the Interior

U.S. Department of Transportation



Chesapeake Bay Program
Science. Restoration. Partnership.

Chesapeake Bay Watershed Agreement 10 broad goals for Bay restoration

https://www.chesapeakebay.net/what/what_guides_us/watershed_agreement

Stewardship Outcome

“Increase the number and diversity of trained and mobilized citizen volunteers with the knowledge and skills needed to enhance the health of their local watersheds.”



Citizen Stewardship Framework

Increasing citizen actions for watershed health





Photos Courtesy Chesapeake Bay Program

Chesapeake Bay Stewardship Indicator

1. Baseline measurement of Stewardship
(Individual actions and likelihood to act,
volunteerism and civic engagement)
2. Inform effective interventions to increase
Stewardship actions

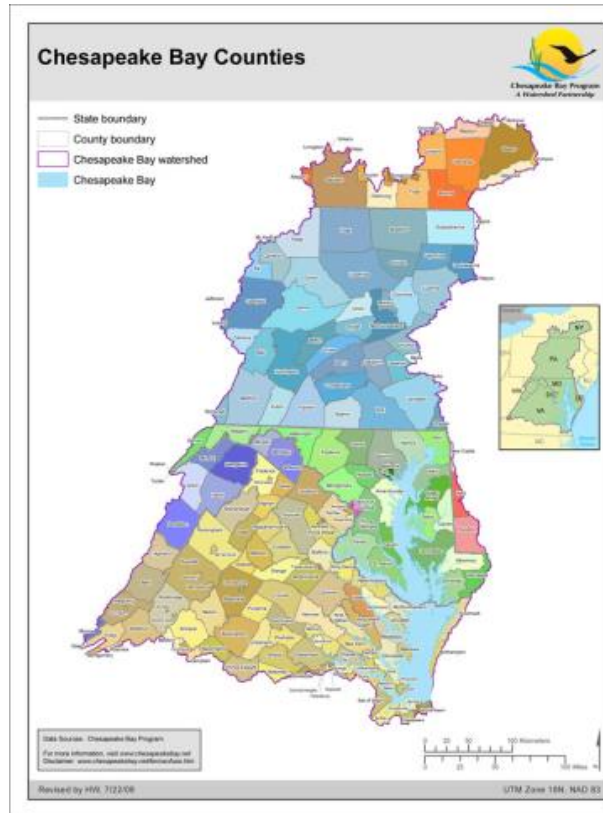
Behaviors

- Pet waste (2: on property/off property)
- Leaves/Lawn clippings (2)
- Litter (2: drop/pick-up)
- Fats, grease/Medicines down the drain (2)
- Fertilizer use/keep off hard surfaces (2)
- Pesticide/Herbicide use (2)
- Conservation landscaping
- Rain garden installation
- Septic system
- Tree planting
- Downspout redirect
- Rain barrel/Connected, emptied (2)
- Water conservation



Stewardship Indicator

Sampling Methodology



	2017 Baseline
Anne Arundel County, MD +678 Interviews	All states statistically significant N=5,212
VA	1,001 ($\pm 3.1\%$)
MD	1,005 ($\pm 3.1\%$)
PA	1,003 ($\pm 3.1\%$)
DC	801 ($\pm 3.5\%$)
WV	600 ($\pm 4.0\%$)
NY	400 ($\pm 4.9\%$)
DE	402 ($\pm 4.9\%$)

Fielded March – May 2017
13-minute interview
Wireless and Landline
Spanish language interviewing

How can the Stewardship Indicator HELP us HELP people?



What: Choose the Right Behavior

Who: Prioritize an Audience

Why: Indicator does not answer
“why”.

What: Choose the Right Behavior



- **Impact**
 - How much will this contribute to improving water quality?
- **Opportunity**
 - How many in the community are *not* doing this?
- **Likelihood**
 - How willing/likely is your target audience to do it?

Stewardship Indicator: 2017 Final Baywide Data + Anne Arundel County

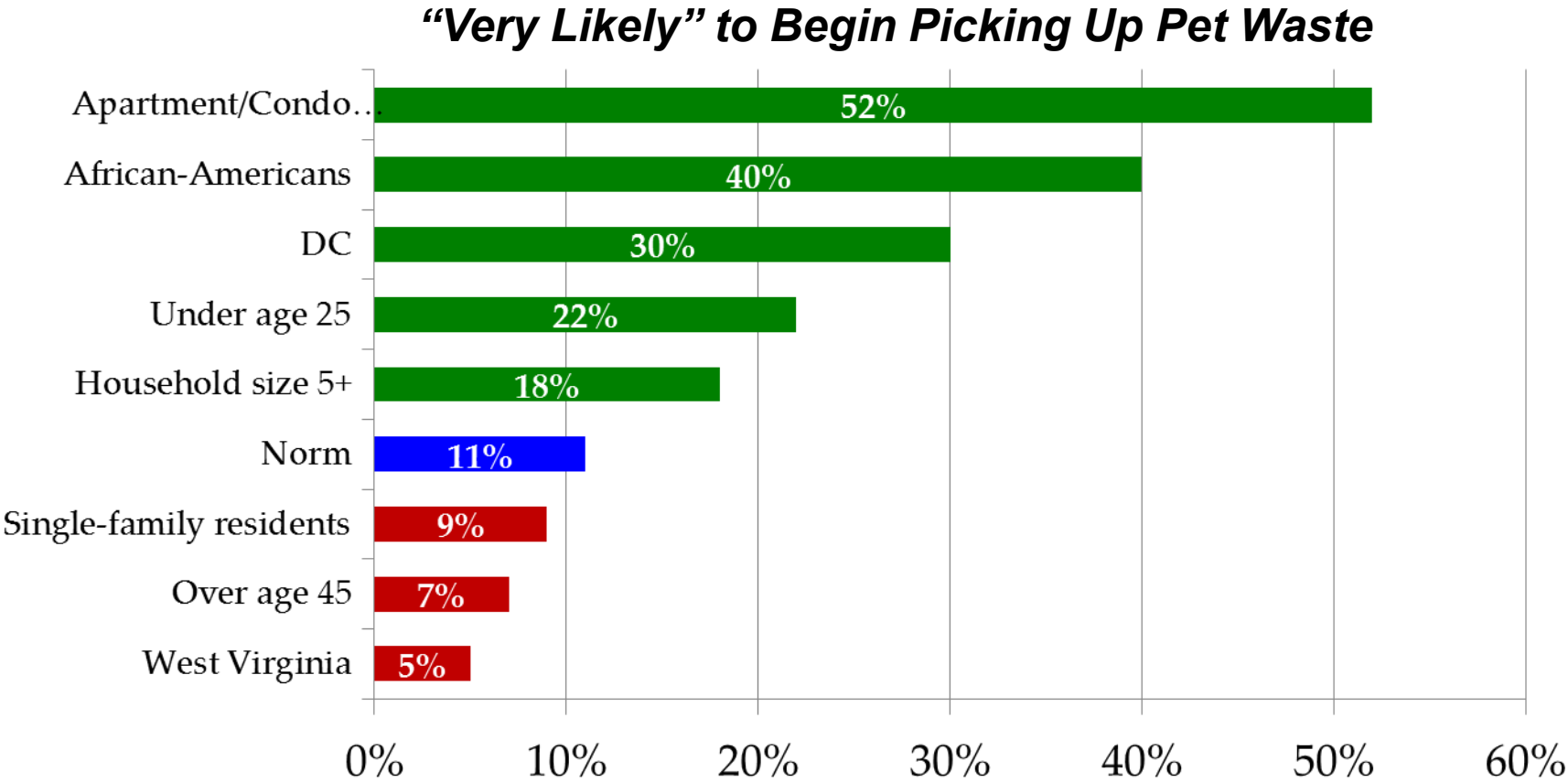
	Adoption	Non-Adoption	Likelihood	Product
Lawn fertilizer off hard surfaces	27.0%	73.0%	24.25	17.70
Plant a tree	40.2%	59.8%	28.40	16.98
Replace an area of grass lawn with natives	30.7%	69.3%	21.55	14.93
Install a rain barrel	17.1%	82.9%	15.60	12.93
Empty rain barrel between rainstorms	66.9%	33.1%	38.35	12.69
Create a rain garden	17.2%	82.8%	14.85	12.30
Bag, mulch, or compost leaves	70.3%	29.7%	39.75	11.81
Fertilize a grass lawn	62.1%	37.9%	29.10	11.03
Use pesticides	63.3%	36.7%	29.00	10.64
Use herbicide	68.5%	31.5%	32.90	10.36
Car washing in driveway or street*	63.0%	37.0%	24.40	9.03
Install low flow fixtures	61.2%	38.8%	22.75	8.83
Downspouts directed to hard surfaces.	71.9%	28.1%	25.95	7.29
Blow grass clippings onto hard surfaces	84.2%	15.8%	44.85	7.09
Septic system inspected	87.2%	12.8%	55.15	7.06
Pick up dog waste	71.4%	28.7%	23.38	6.70
Oil or grease down the drain	87.0%	13.0%	45.60	5.93
Pick up other people's litter	85.9%	14.1%	33.95	4.79
Medicine down the drain	91.1%	8.9%	50.55	4.50
Toss litter on the ground	94.2%	5.8%	58.25	3.38

Adoption = Percentage of the population performing a positive behavior
(at least sometimes) or not performing a negative behavior (seldom or never)

Who: Prioritize an Audience

- **SIZE:** As a segment of a population, what is the actual or relative size of this segment?
- **Opportunity:** Is that audience not doing a desired behavior? (i.e. are homeowners with small waterfront lawns making a larger or smaller impact than homeowners with large lawns far from the waterfront?)
- **Likelihood (READINESS TO ACT):** How concerned is the target audience with the problem issue/behavior? How likely are they to take action on this behavior?

Citizen Stewardship Indicator: 2017 Final Baywide Data



Looking forward over the next year or so, how likely are you to do each of these things using the scale very likely, somewhat likely, or not likely?

Pick up your dog’s waste and dispose of it in the trash when you are...

...On your own property.

[About the Survey](#)[Survey Trends](#)[Survey Data](#)[Behavior Change](#)[Campaigns](#)[About Us](#)

Inspiring Action, Fostering Stewardship

Thousands of Chesapeake Bay watershed residents were surveyed about their stewardship behaviors that impact the Bay's health.

[Learn about the survey](#)

Filter:

-  Location ▼
-  Age ▼
-  Education ▼
-  Children in the household ▼
-  Home ownership ▼
-  Housing type ▼
-  Community type ▼
-  Family involved in agriculture ▼
-  Religious affiliation ▼
-  Race or ethnicity ▼
-  Income ▼
-  Gender ▼

Survey Data

The Citizen Stewardship Index Survey reveals insight into the knowledge, attitudes, and practices of residents in the Chesapeake Bay Watershed. Explore the survey results below to inform your behavior change campaign.

STRENGTH OF DATA ⓘ

99/100

[Download the methodology \(.pdf\)](#)**CURRENT SAMPLE**

5,212 Respondents

[Download this data \(.xls\)](#)**BAY-WIDE SAMPLE**

5,212 Respondents

[Download this data \(.xls\)](#)**BEHAVIORS**

The Citizen Stewardship Index Survey questions were based on 19 behaviors. Some of the behaviors are positive and encouraged, while others are negative and should be minimized or stopped. Explore the behaviors below, filter the list by behavior type, or sort the behaviors by their overall combined score, environmental impact, available opportunity, or likelihood of adoption.

Select Behavior Type:

All ▼

Sort by:

Combined Score ▼SCORE
95**DOG WASTE**

Pick up your dog's waste and dispose of it in the trash when you are **off** your property.

[View behavior data](#)SCORE
93**DOG WASTE**


Pick up your dog's waste and dispose of it in the trash when you are **on** your property.

[View behavior data](#)

Filter by demographic

Location

Explore Map



Select Locations

Delaware

Maryland

☐ Shore Region

E Shore + Harford + Southern MD

☒ Anne Arundel County

☒ Baltimore County

☒ Montgomery County

☒ Prince George's County

☒ Baltimore City

☐ Piedmont Region

Allegany -> Carroll + Howard

New York

Pennsylvania

Virginia

Washington, DC

West Virginia

Age

☐ Less than 25

☐ 25 to 34

☐ 35 to 44

☐ 45 to 54

☒ 55 to 64

☒ 65 to 74

☒ 75 or more

Survey Data

The Citizen Stewardship Index Survey reveals insight into the knowledge, attitudes, and practices of residents in the Chesapeake Bay Watershed. Explore the survey results below to inform your behavior change campaign.

Filters:

CLEAR ALL

Maryland - Anne Arundel County X

55 to 64 X

65 to 74 X

75 or more X

Maryland - Baltimore County X

Maryland - Montgomery County X

Maryland - Prince George's County X

Maryland - Baltimore City X

STRENGTH OF DATA

50/100

CURRENT SAMPLE

256 Respondents

BAY-WIDE SAMPLE

5,212 Respondents

THE BEHAVIORS

The Citizen Stewardship Index Survey questions were based on 19 behaviors. Some of the behaviors are positive and encouraged, while others are negative and should be minimized or stopped. Explore the behaviors below, filter the list by behavior type, or sort the behaviors by their overall combined score, environmental impact, available opportunity, or likelihood of adoption.

Select Behavior Type: All

Sort by: Combined Score

▼	<div>SCORE</div> 87	<div>STORMWATER MANAGEMENT</div> <div>Created a rain garden, or an area specifically designed to capture and quickly absorb excess rainwater.</div>	<div>View behavior data</div>
▼	<div>SCORE</div> 87	<div>STORMWATER MANAGEMENT</div> <div>Do you have a rain barrel, which is a container that collects rain water from your downspouts?</div>	<div>View behavior data</div>
▼	<div>SCORE</div> 75	<div>POLLUTION MANAGEMENT</div> <div>Planted a tree.</div>	<div>View behavior data</div>
▼	<div>SCORE</div> 74	<div>YARD WASTE</div> <div>Replaced an area of grass lawn with native low-maintenance plants.</div>	<div>View behavior data</div>
▼	<div>SCORE</div> 72	<div>STORMWATER MANAGEMENT</div> <div>Do any of your downspouts drain directly to hard surfaces like a driveway, sidewalk, or street gutter?</div>	<div>View behavior data</div>
▼	<div>SCORE</div> 63	<div>POLLUTION MANAGEMENT</div> <div>Sweep lawn fertilizer off hard surfaces, or use a spray guard to keep it off hard surfaces.</div>	<div>View behavior data</div>
▼	<div>SCORE</div> 58	<div>WATER CONSUMPTION</div> <div>Have you installed low flow sinks, shower heads or toilets to conserve water at your home?</div>	<div>View behavior data</div>

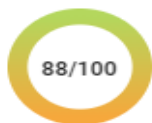
Rain Barrel

What: Choose a Behavior

Anne Arundel County - Maryland; Baltimore County - Maryland; Montgomery County - Maryland; Prince George's County - Maryland; Baltimore City - Maryland

Sample Size: 679/679

AVAILABLE OPPORTUNITY



LIKELIHOOD OF ADOPTION



ENVIRONMENTAL IMPACT ⓘ



COMBINED SCORE ⓘ



Plant a Tree

Anne Arundel County - Maryland; Baltimore County - Maryland; Montgomery County - Maryland; Prince George's County - Maryland; Baltimore City - Maryland

Sample Size: 679/679

AVAILABLE OPPORTUNITY



LIKELIHOOD OF ADOPTION



ENVIRONMENTAL IMPACT ⓘ



COMBINED SCORE ⓘ



Pet Waste

Anne Arundel County - Maryland; Baltimore County - Maryland; Montgomery County - Maryland; Prince George's County - Maryland; Baltimore City - Maryland

Sample Size: 679/679

AVAILABLE OPPORTUNITY



LIKELIHOOD OF ADOPTION



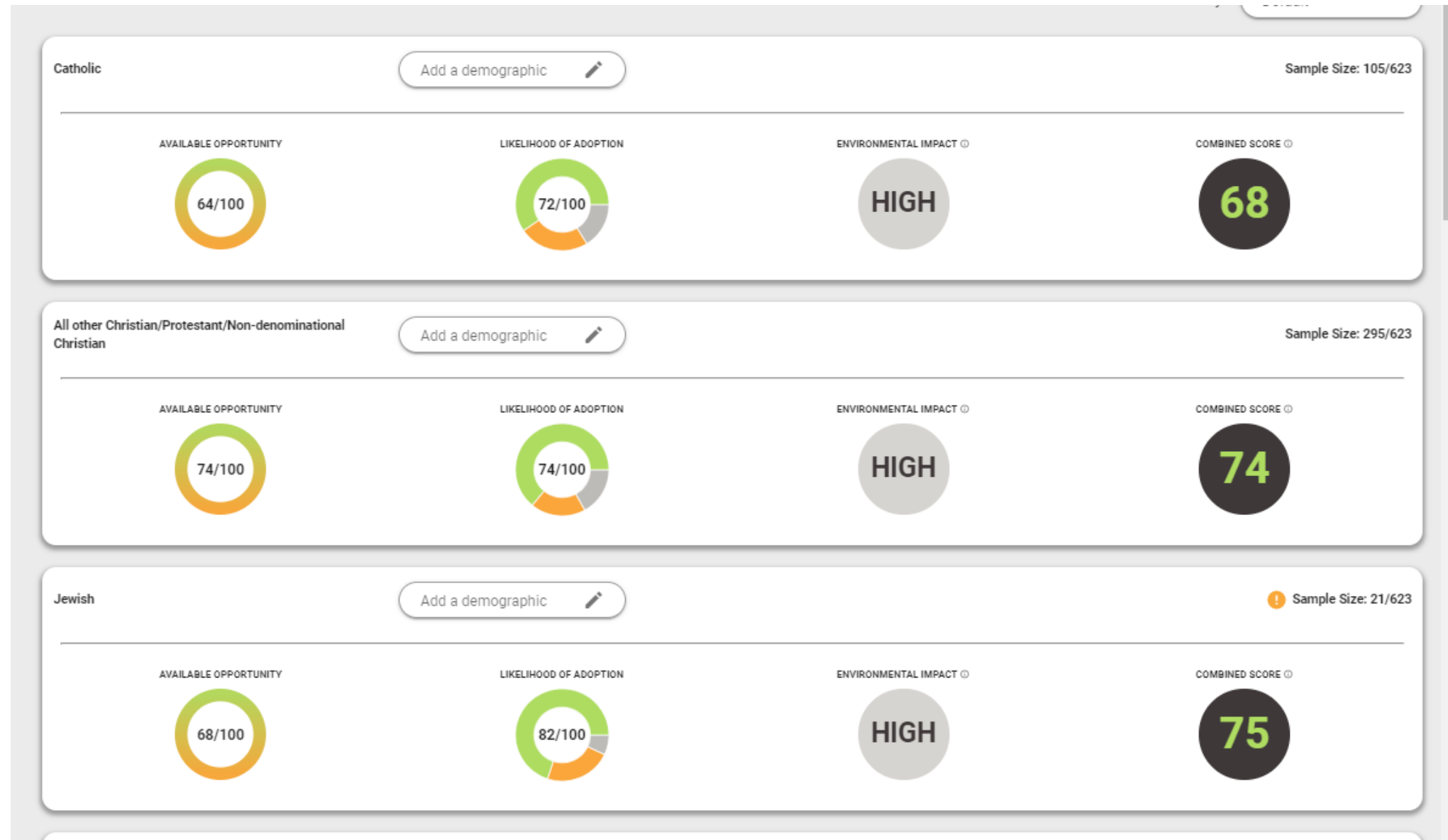
ENVIRONMENTAL IMPACT ⓘ



COMBINED SCORE ⓘ



Who: Prioritize an Audience



About The Survey

In 2017, the Chesapeake Bay Program conducted the Citizen Stewardship Index Survey, its first comprehensive survey of people's actions and attitudes in the Chesapeake Bay Watershed. The survey was developed and conducted by OpinionWorks LLC on behalf of the Chesapeake Bay Program. The data was collected through mobile and landline phone interviews with 5,212 randomly selected watershed residents between March 14 and June 13, 2017. The Chesapeake Bay Program intends to repeat the survey every five years.



**6 WATERSHED STATES
& WASHINGTON, DC**



**20 MEASURED
BEHAVIORS**

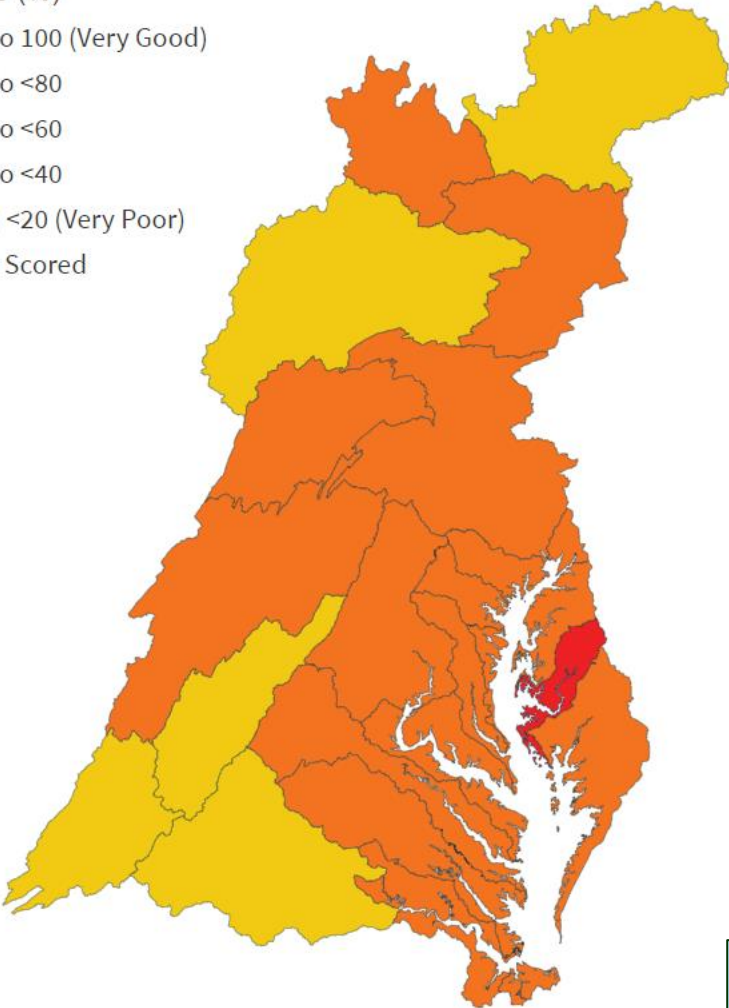
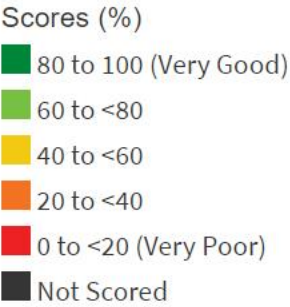


**5,212 COMPLETED
SURVEYS**



**12 DEMOGRAPHIC
SEGMENTS**

Stewardship Indicator: Bay Report Card



	2017 Baseline
	All states statistically significant N=5,212
VA	1,001 (±3.1%)
MD	1,005 (±3.1%)
PA	1,003 (±3.1%)
DC	801 (±3.5%)
WV	600 (±4.0%)
NY	400 (±4.9%)
DE	402 (±4.9%)

Next Fielding: 2022