

Integrating Diversity and Climate Impact Layers

John Wolf

Climate Resiliency Workgroup Meeting

September 19, 2016

Overview

- EJ Screen
 - Overview
 - Types of Data
- Climate Layers
- Examples - Potential Integration

What is EJSCREEN?

EJSCREEN is an environmental justice mapping and screening tool that provides EPA with a nationally consistent dataset and approach for combining environmental and demographic indicators.

Environmental Indicators in EJ Screen (not Diversity)

Indicator	Place on Exposure– Risk Continuum	Key Medium
NATA Air Toxics Cancer Risk Lifetime inhalation cancer risk	Risk/Hazard	Air
NATA Respiratory Hazard Index Ratio of exposure concentration to RfC		
NATA Neurological Hazard Index Ratio of exposure concentration to RfC		
NATA Diesel PM (DPM) (µg/m³)	Potential Exposure	
Particulate Matter (PM_{2.5}) Annual average (µg/m³)		
Ozone Summer seasonal average of daily maximum 8-hour concentration in air (ppb)		
Lead Paint Indicator Percentage of housing units built before 1960		Dust/ Lead Paint
Traffic Proximity and Volume Count of vehicles (average annual daily traffic) at major roads within 500 meters, divided by distance in kilometers (km)	Proximity/ Quantity	Air/ Other
Proximity to RMP Sites Count of facilities within 5 km, divided by distance		Waste/ Water/ Air
Proximity to TSDFs Count of major TSDFs within 5 km, divided by distance		
Proximity to NPL Sites Count of proposed and listed NPL sites within 5 km, divided by distance ⁶		
Proximity to Major Direct Water Dischargers Count of NPDES major facilities within 5 km, divided by distance		Water

Demographic Indicators (“out-of-the-box”)

1. Percent Low-Income:

- The percent of a block group's population in households where the household income is less than or equal to twice the federal "poverty level."

2. Percent Minority:

- The percent of individuals in a block group who list their racial status as a race other than white alone and/or list their ethnicity as Hispanic or Latino. That is, all people other than non-Hispanic white-alone individuals. The word "alone" in this case indicates that the person is of a single race, not multiracial.

3. Less than high school education:

- Percent of people age 25 or older in a block group whose education is short of a high school diploma.

4. Linguistic isolation:

- Percent of people in a block group living in linguistically isolated households. A household in which all members age 14 years and over speak a non-English language and also speak English less than "very well" (have difficulty with English) is linguistically isolated.

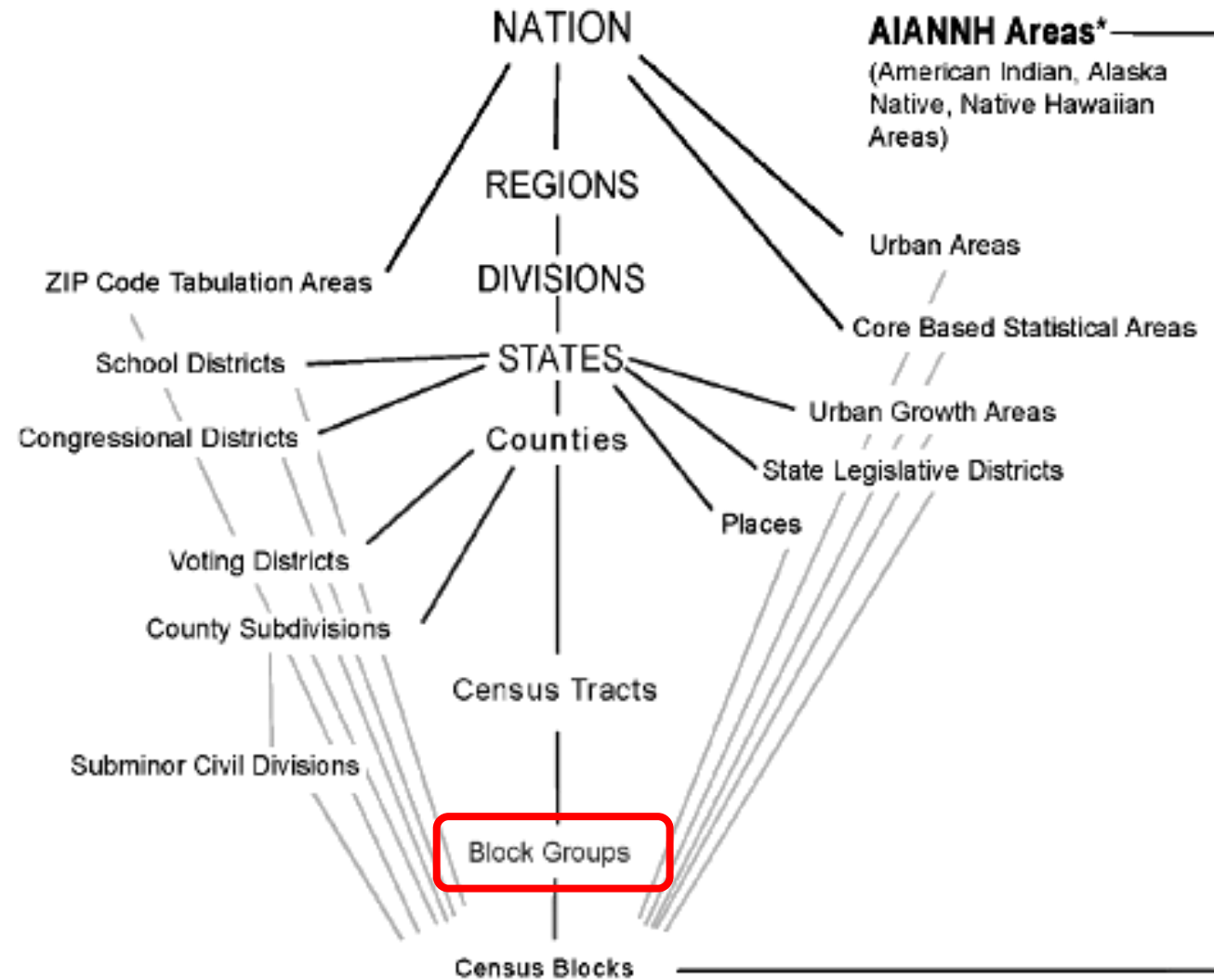
5. Individuals under age 5:

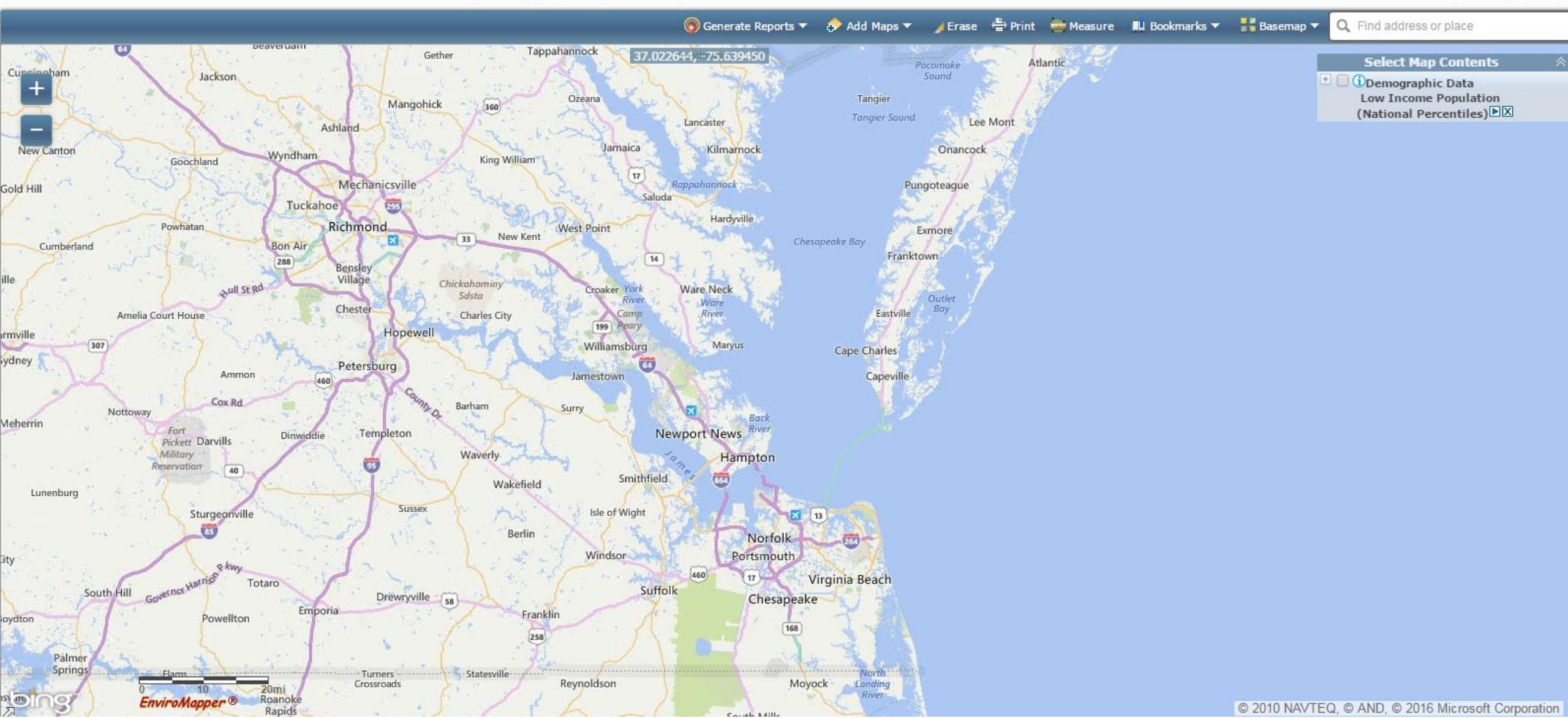
- Percent of people in a block group under the age of 5.

6. Individuals over age 64:

- Percent of people in a block group over the age of 64.

Census Block Group is a geographical unit used by the United States **Census** Bureau which is between the **Census** Tract and the **Census Block**. It is the smallest geographical unit for which the bureau publishes sample data, i.e. data which is only collected from a fraction of all households. Typically, Block Groups have a population of 600 to 3,000 people. (Wikipedia 2016)





Generate Reports ▾

Add Maps ▾

Erase

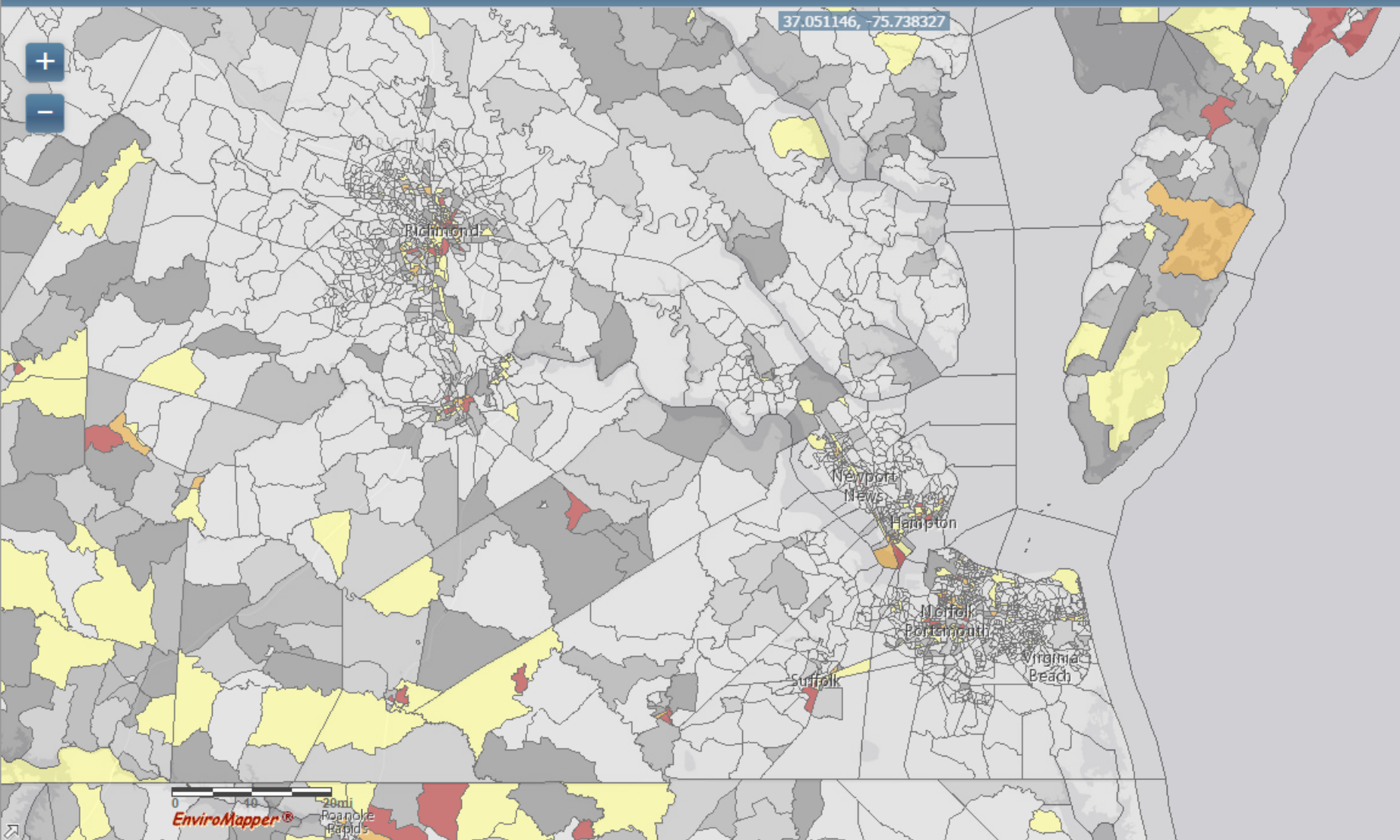
Print

Measure

Bookmarks ▾

Basemap ▾

Find address or place



Select Map Contents

- ☒ **Demographic Data**
Low Income Population
(National Percentiles)
- ☐ Data not available
 - ☐ Less than 50 percentile
 - ☐ 50 -60 percentile
 - ☐ 60 -70 percentile
 - ☐ 70 -80 percentile
 - ☐ 80 - 90 percentile
 - ☐ 90 - 95 percentile
 - ☐ 95 - 100 percentile

Explore Reports



Block group 517600302001, VIRGINIA, EPA Region 3 (Population: 1,812)

Environmental Indicators

Demographic Indicators

EJ Indexes

[\[Unselect All\]](#)

☒ Demographic Index

☒ Minority Population

☒ Low Income Population

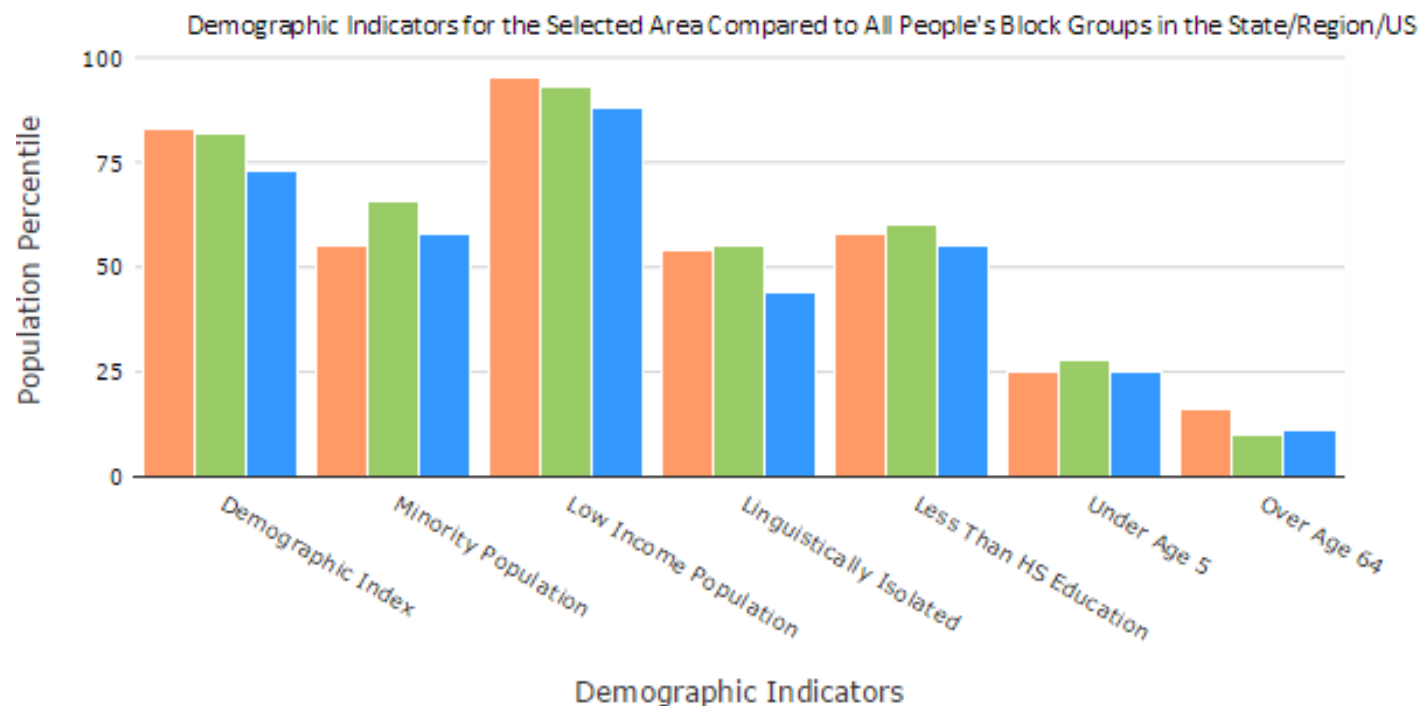
☒ Linguistically Isolated

☒ Less Than HS Education

☒ Under Age 5

☒ Over Age 64

☒ State Percentile ☒ Regional Percentile ☒ USA Percentile



Get Data Table

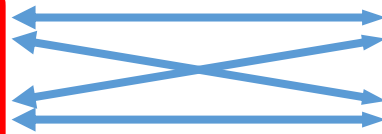
Initial Layers for EJ Screen/Climate Integration

Demographic Indicators

- Percent Low Income
- Percent Minority
- Less than High School Education
- Linguistic Isolation
- Individuals under age of 5
- Individuals over age of 65

Climate Layers

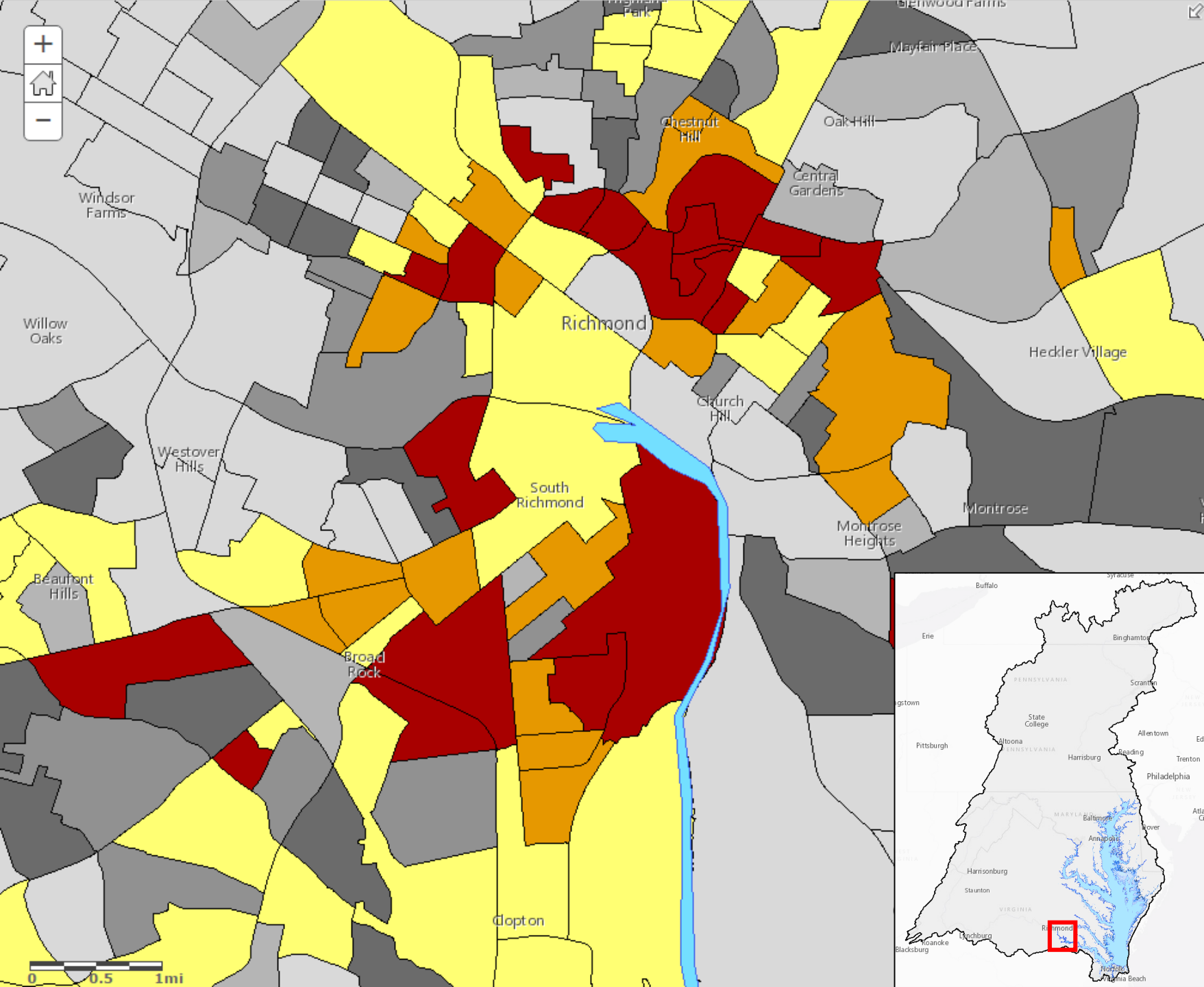
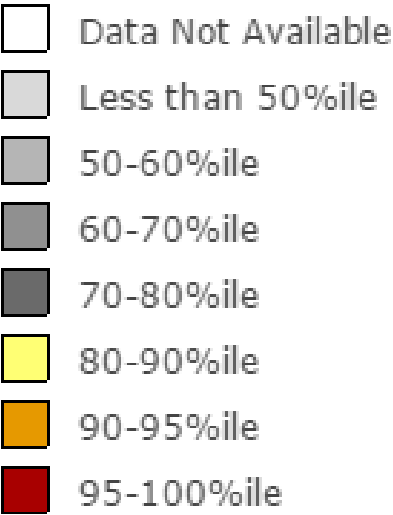
- Flood Risk
- Sea Level Rise
- Coastal Resiliency (MD)



Richmond Area

Demographic Indicators 2015

Low Income (<2x poverty level)



Low Income

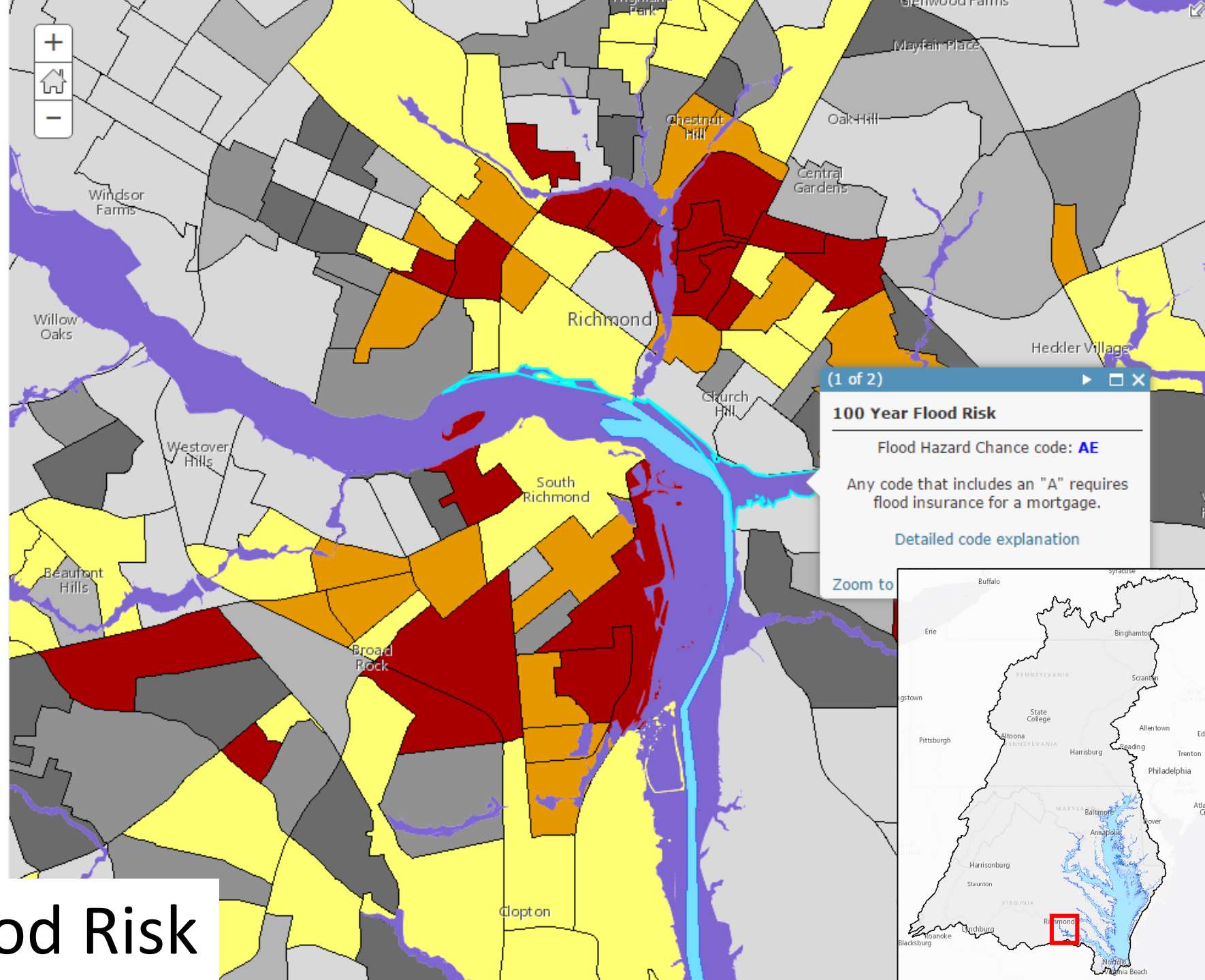
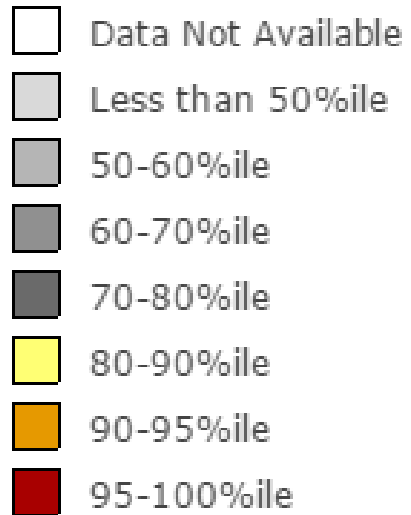
Richmond Area

100 Year Flood Areas

1.0% Annual chance

Demographic Indicators 2015

Low Income (<2x poverty level)

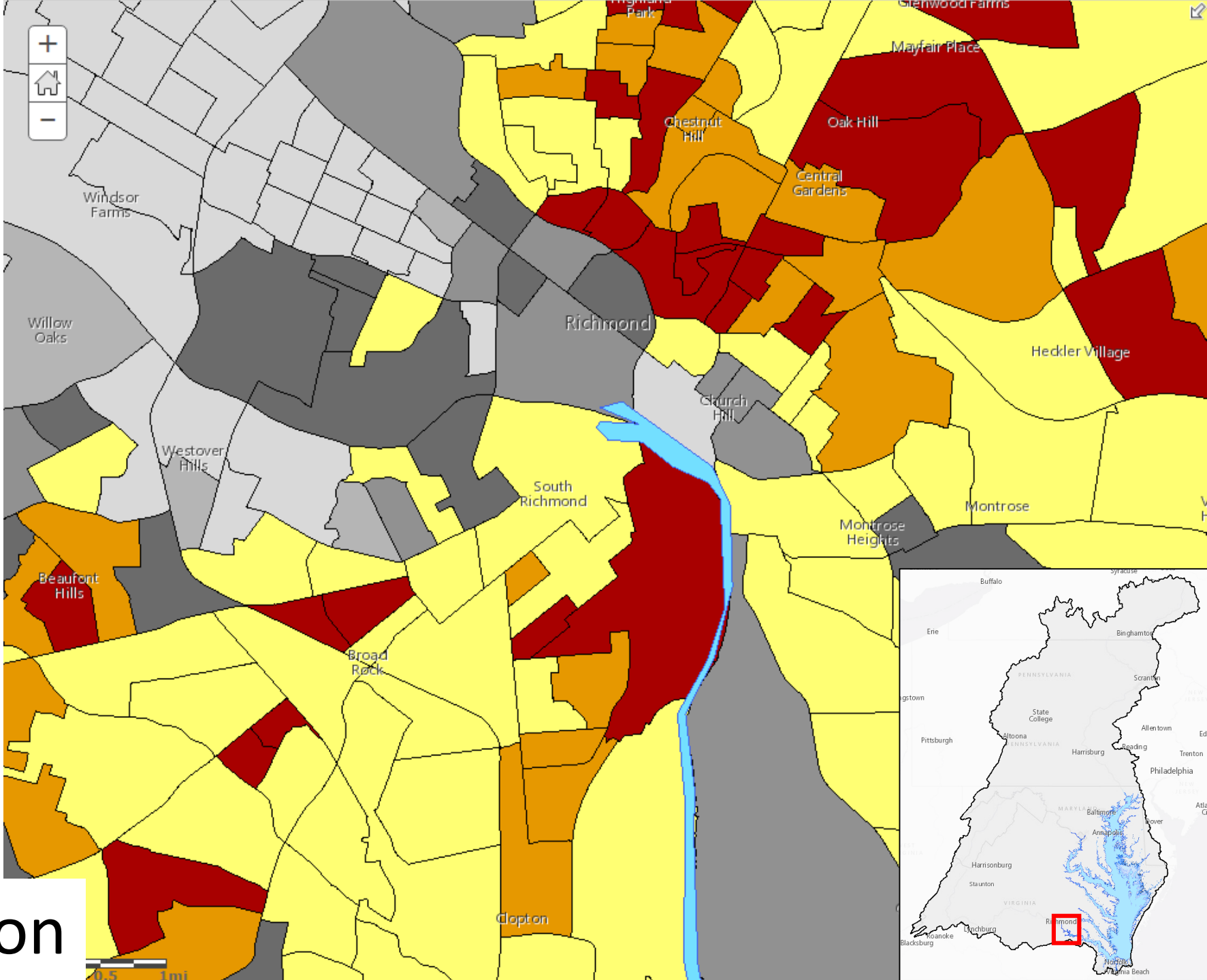
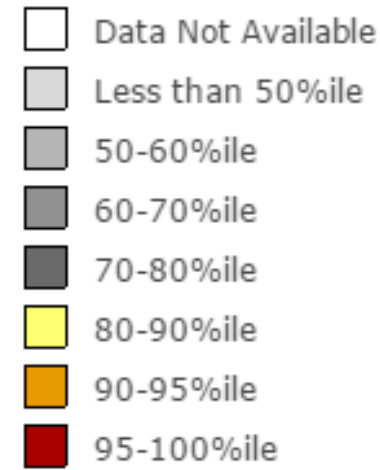


Low Income + Flood Risk

Richmond Area

Demographic Indicators 2015

Minority Population



Minority Population









Richmond Area

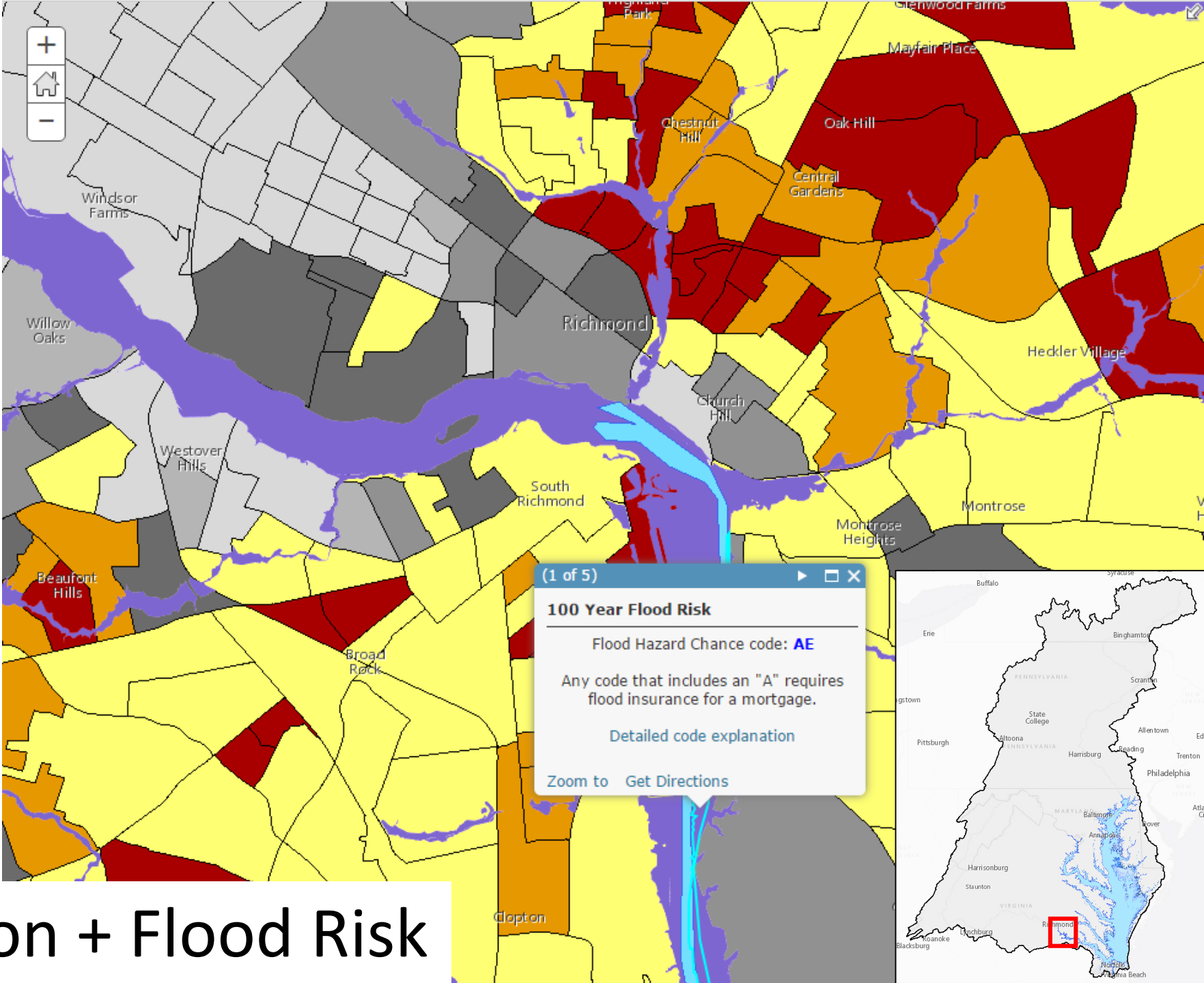
100 Year Flood Areas

 1.0% Annual chance

Demographic Indicators 2015

Minority Population

-  Data Not Available
-  Less than 50%ile
-  50-60%ile
-  60-70%ile
-  70-80%ile
-  80-90%ile
-  90-95%ile
-  95-100%ile

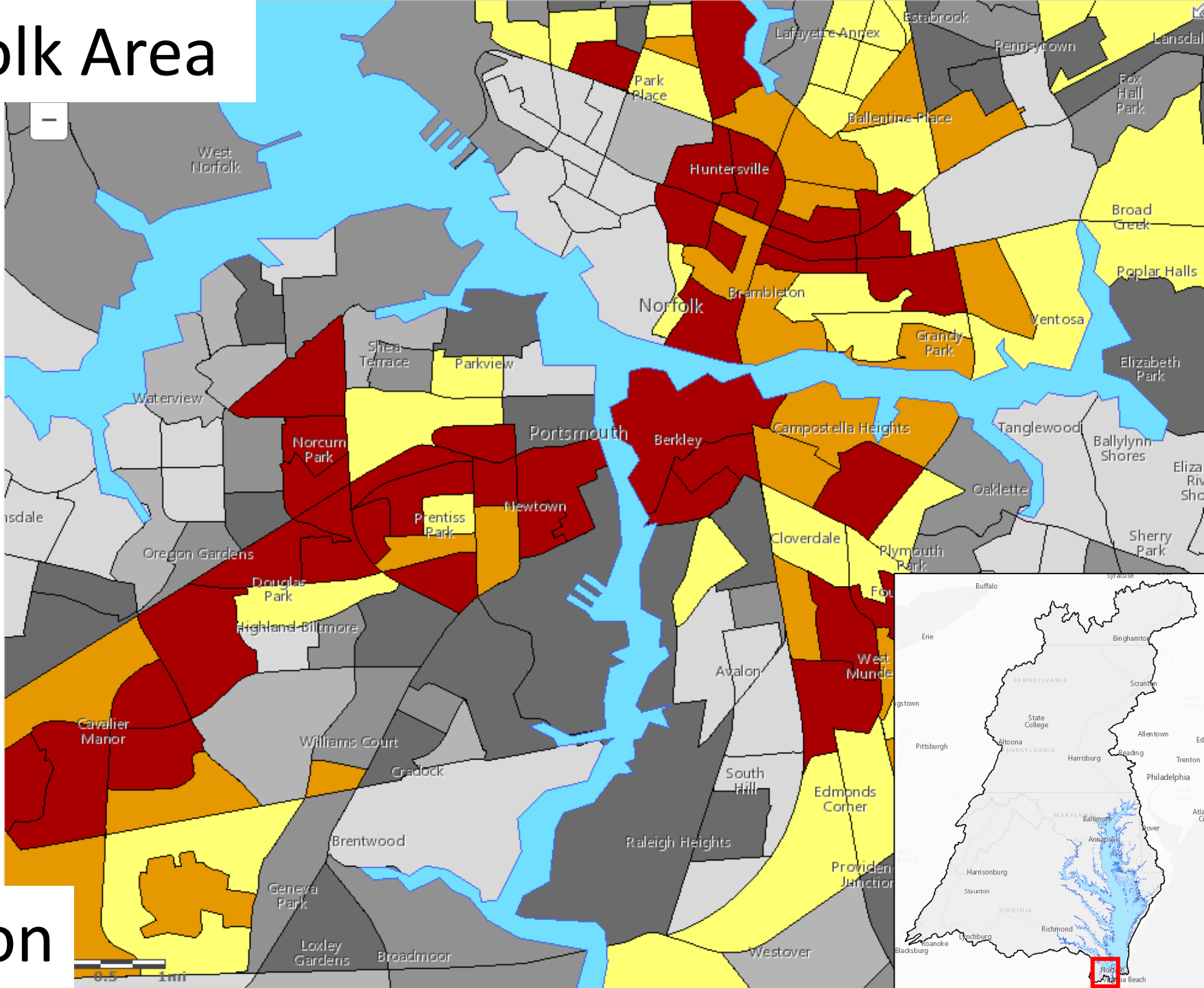
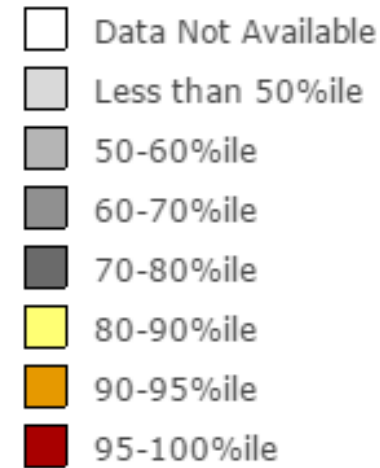


Minority Population + Flood Risk

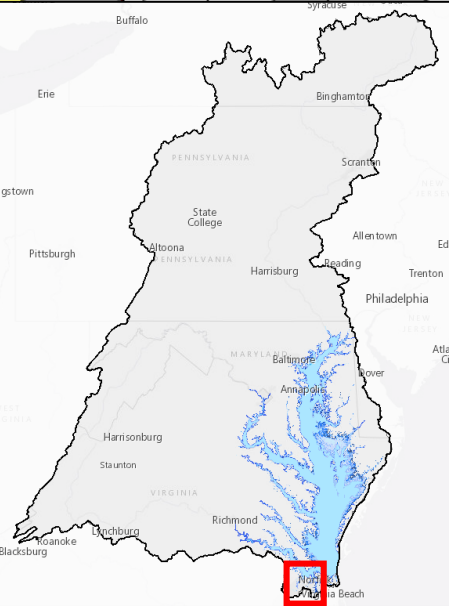
Portsmouth/Norfolk Area

Demographic Indicators 2015

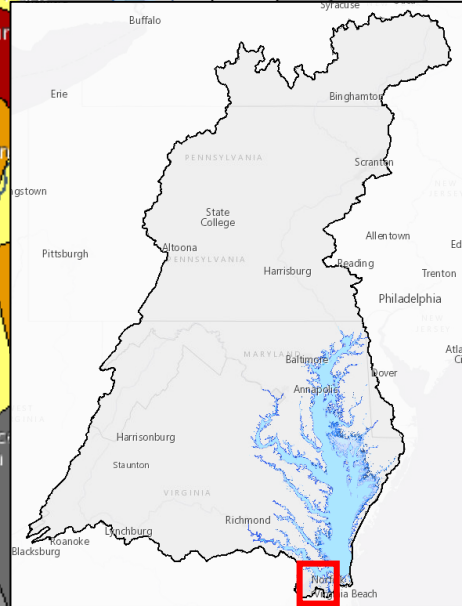
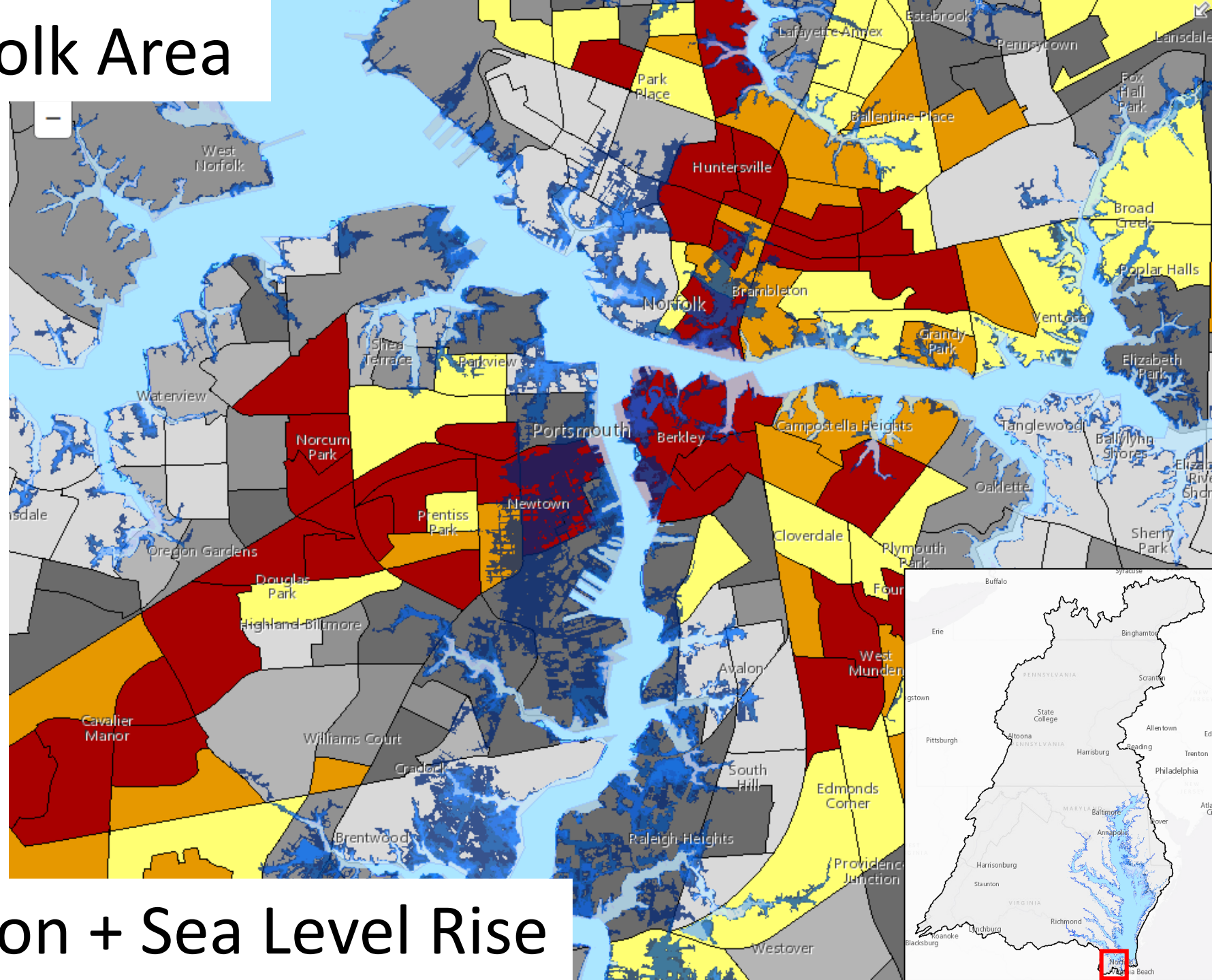
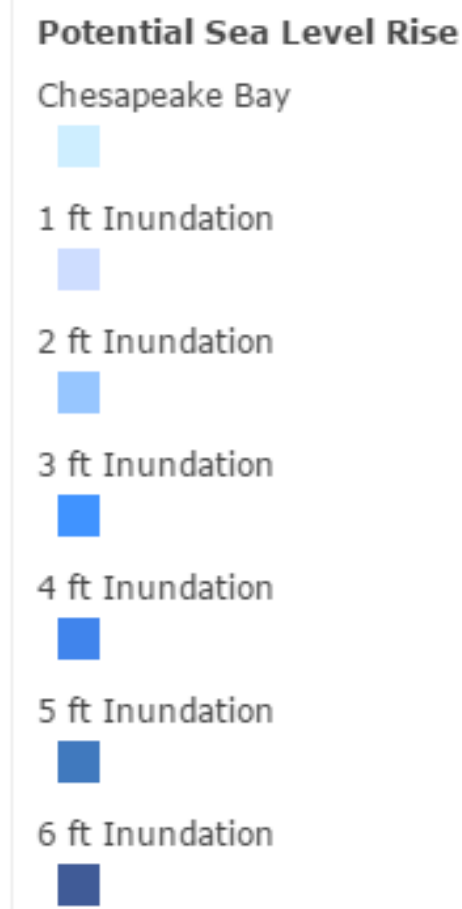
Minority Population



Minority Population



Portsmouth/Norfolk Area

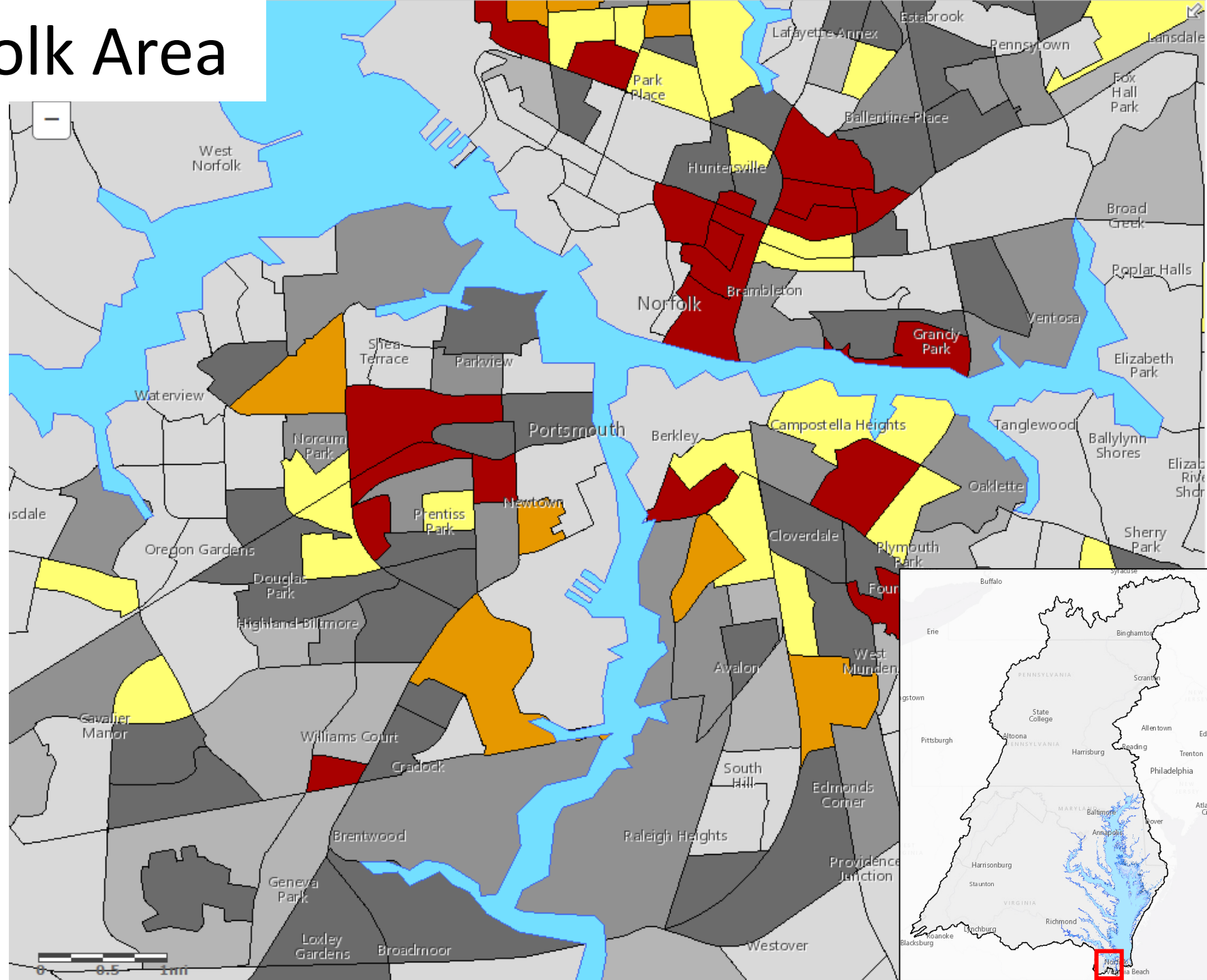
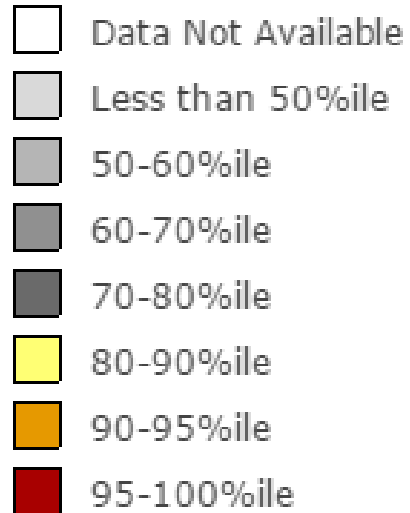


Minority Population + Sea Level Rise

Portsmouth/Norfolk Area

Demographic Indicators 2015

Low Income (<2x poverty level)



Low Income

Portsmouth/Norfolk Area

Potential Sea Level Rise

Chesapeake Bay

1 ft Inundation

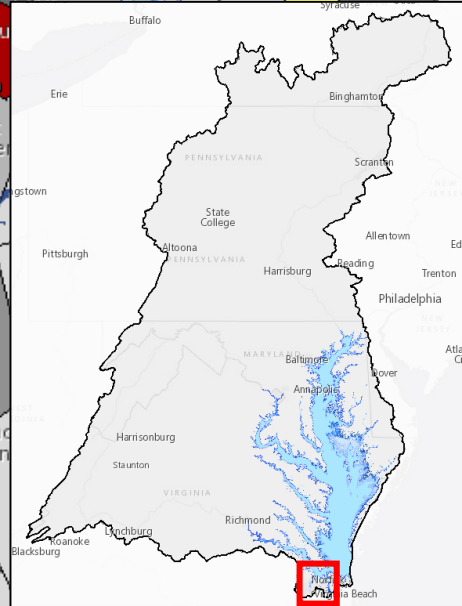
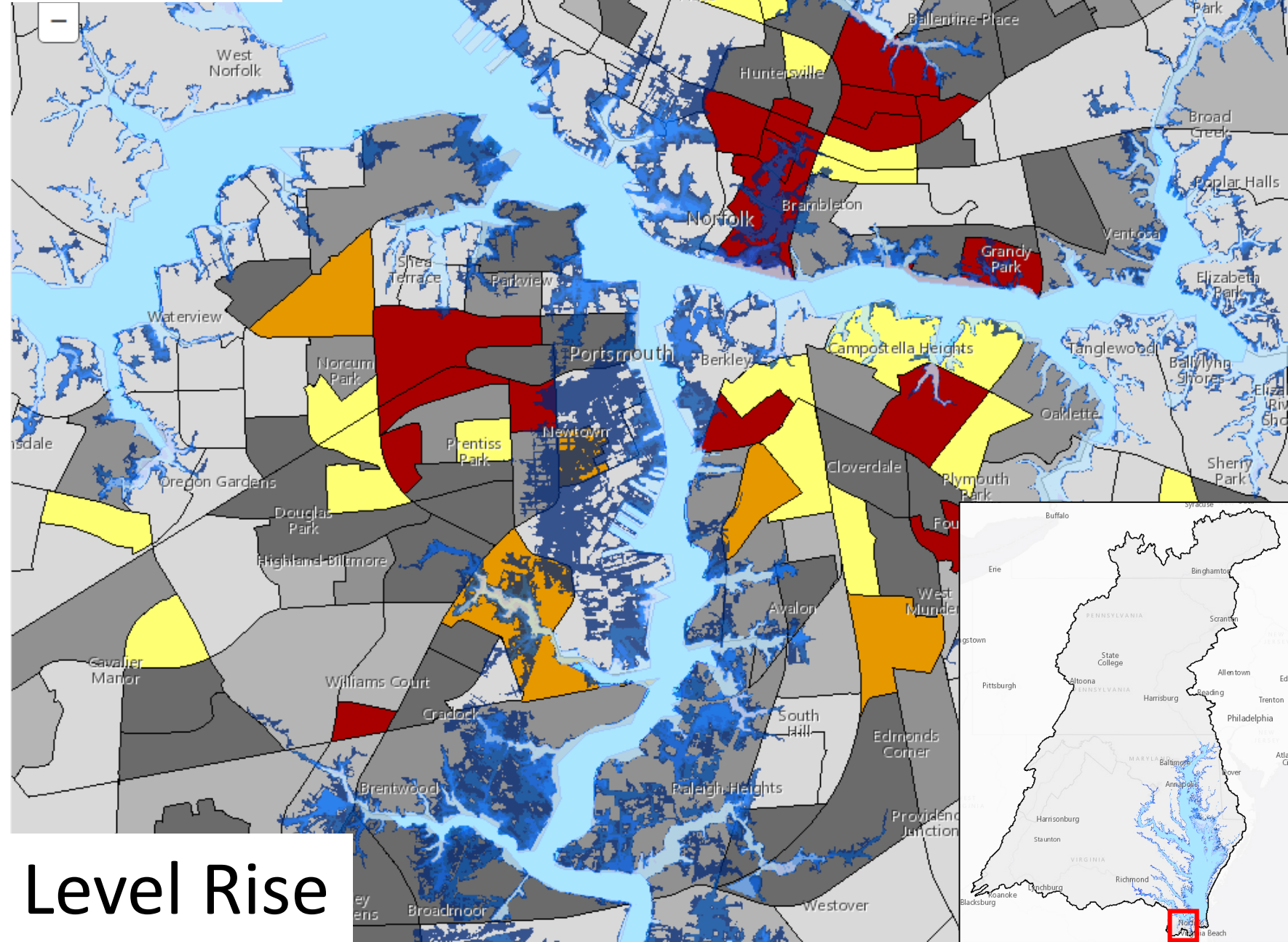
2 ft Inundation

3 ft Inundation

4 ft Inundation

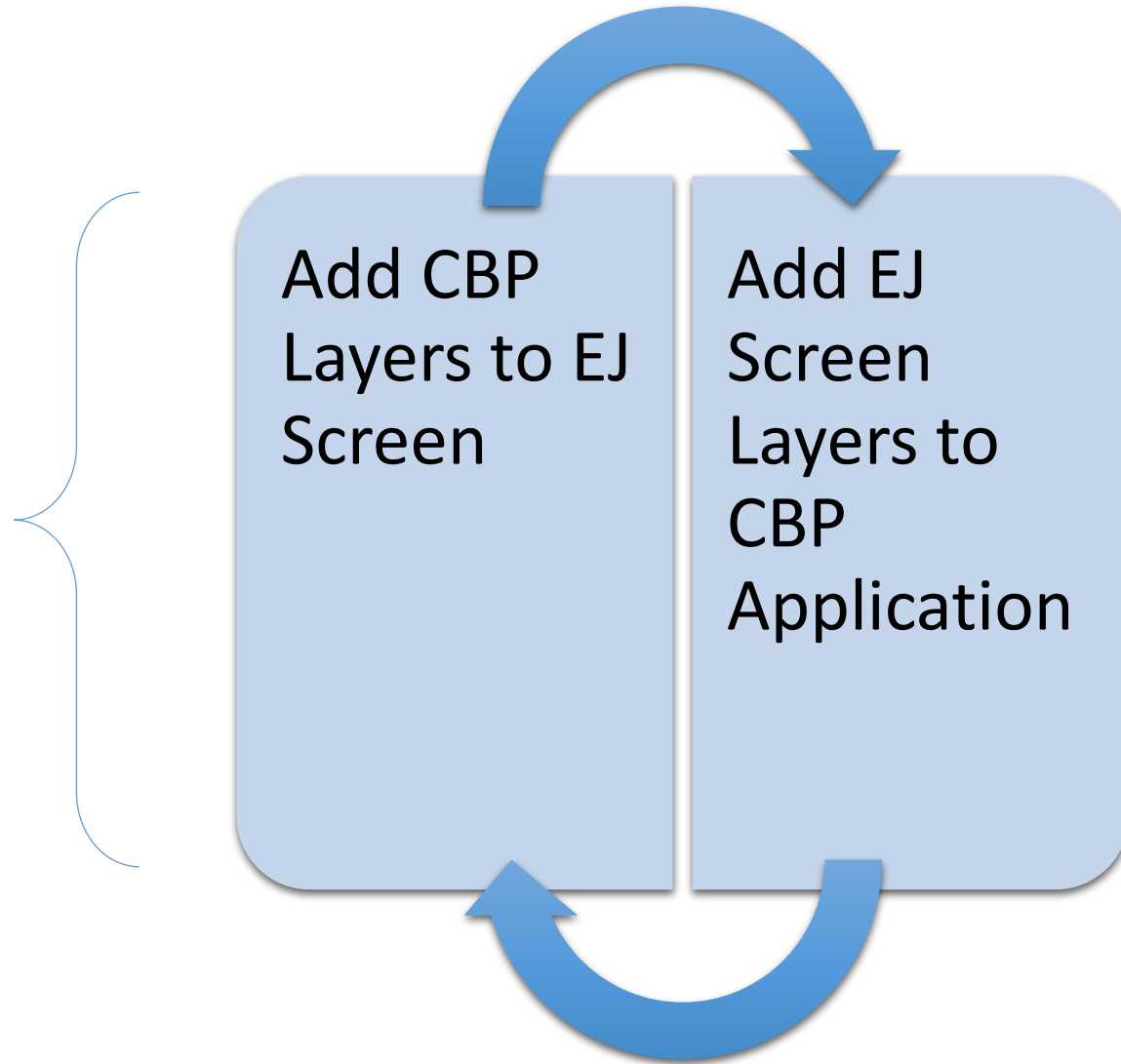
5 ft Inundation

6 ft Inundation



Low Income + Sea Level Rise

Options for Integrating Diversity into Other Outcomes



Layers Recommended for Cross-GIT Mapping Project

GIT 1	Priority Living Resources Areas (surrogate for Fish Habitat) Oyster Restoration Areas National Fish Habitat Action Plan (risk of current habitat degradation)	GIT 3	SPARROW Nutrient Loads Waters Impaired for PCBs Long Term WQ Monitoring Trends Water Quality Standards Attainment	Climate	Sea Level Rise/Inundation Flood Hazard Risk (riverine) Wetland Adaptation Areas
GIT 2	Regional Conservation Opportunity Areas Index of Ecological Integrity (NALCC)	GIT 4	Healthy Watersheds Protected Lands	Diversity	High Poverty Ethnic Minority Public Health Indicator ((e.g. cancer rates, asthma, birth defects))
	Brook Trout Black Duck Energetics Model				
		GIT 5	Public Access Land Protection Priorities (via Chesapeake Conservation Partnership)	Land Change	CB Land Change Model

Questions?