

**FROM THE CACAPON TO THE POTOMAC TO THE CHESAPEAKE BAY, WE
PROTECT RIVERS AND WATERSHEDS USING SCIENCE AND EDUCATION**



**FRANK F. RODGERS
EXECUTIVE DIRECTOR
CACAPON INSTITUTE
ISA CERTIFIED ARBORIST #MA-4468A**



State Game
Lands 048

Cumberland

Green Ridge
State Forest

Hagerstown

South Mountain
State Park

Winchester

Winchester

Ch
and
Hist

Cacapon Institute
2008-2025



Growing Native

School



Community



Parks & Trails



Private



School



Spiritual



Subdivision



Earthstar Geographics, VGIN, Esri, TomTom, Garmin, SafeGraph, FAO, METI/NASA, USGS, EPA, NPS,
Shenandoah National Park
USFWS



Chesapeake
Tree Canopy
Network

[SIGN UP](#) [NEWSLETTER ARCHIVE](#) [ABOUT US](#) [CONTACT US](#) [CHESAPEAKEFORESTBUFFERS.NET](#)

[WHY TREE CANOPY?](#) [UNDERSTAND YOUR CANOPY](#) [EXPAND YOUR CANOPY](#) [MAINTAIN YOUR CANOPY](#)

Welcome to the Chesapeake Tree Canopy Network

Connecting you with resources, stories, and best practices to [understand your canopy](#), [expand your canopy](#), and [maintain your canopy](#). Learn about and make the case to others [why tree canopy](#) is so critical to a healthy, vibrant Chesapeake Bay watershed. We are building this resource as we go, so please [send your ideas](#) and suggestions for making the network most helpful.

IMPROVED ACADEMIC PERFORMANCE
Learning in natural environments can:

ENHANCED ATTENTION
Spending time in nature can help children focus their attention:



**BOOST
PERFORMANCE**



**ENHANCE
creativity, critical**

New Trees & Schools Guide for Chesapeake Communities

[Read More](#)

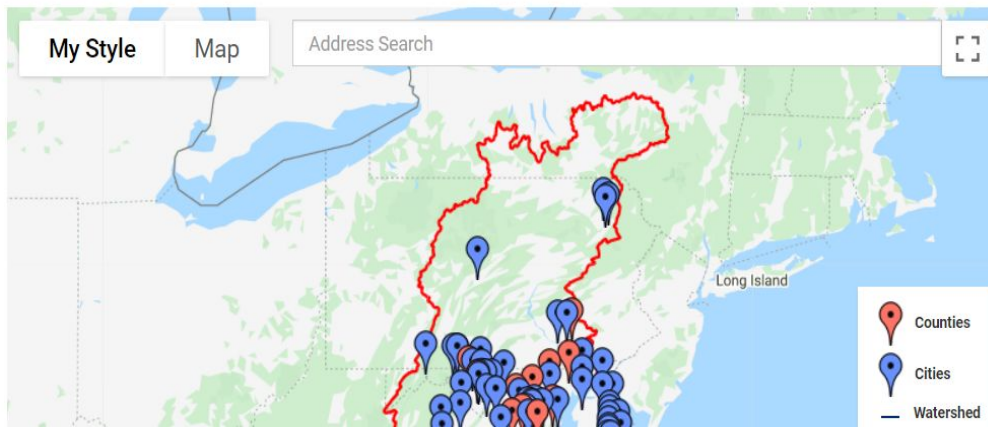
Get updates on tree canopy news and events!

[SIGN UP](#)

[NEWSLETTER ARCHIVES](#)

Tree Canopy Initiatives

Find local tree canopy assessments, goals, and urban forestry contacts.



**chesapeake
network**

Looking to participate in the tree canopy conversation? Join our group on the [Chesapeake Network](#). Need help joining, posting, or have questions? Check out our [help guide \(PDF\)](#).

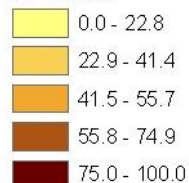
Schoolyard forestry is the height of urban & community forestry

Urban Forestry is the care of the trees we live with, the trees that grace our cities and towns, schools, parks, roadsides, and neighborhoods.



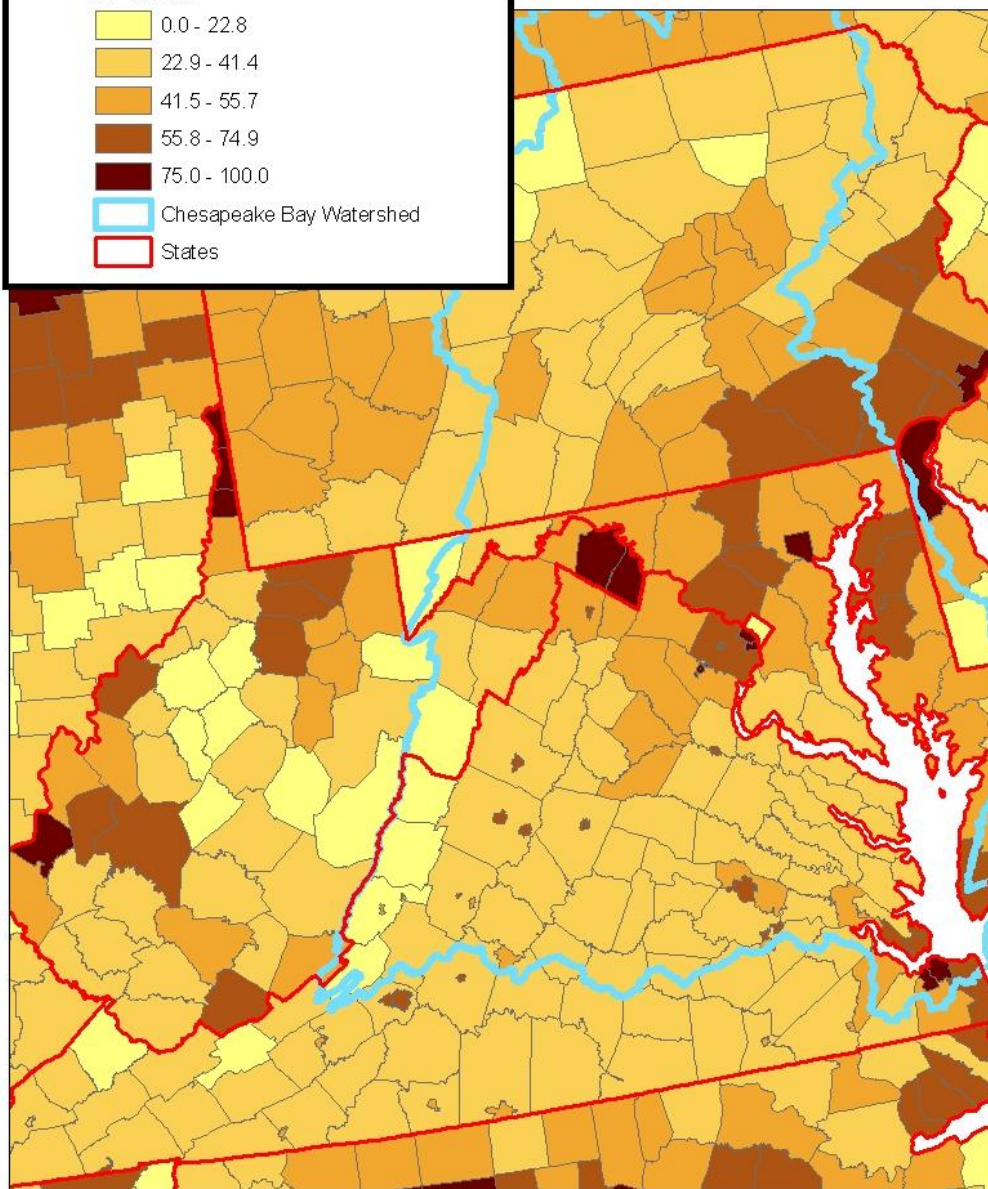
Planting Priority Index by Counties

PPI Rank



Chesapeake Bay Watershed

States



Why urban forestry for WV?

USDA Forest Service's
Planting Priority Index (Nowak,
2000)

Identified, and ranked, areas of low
canopy and growing population.

See how the E. Panhandle has a
high PPI scores due to canopy loss
and population growth.

Martinsburg's I-81 corridor has the fastest rate of urban land cover growth in the Chesapeake Bay Watershed.

Gray: 2000 Urban Land Cover
Black: Growth 2020



What does 73% rate of growth look like?

1997

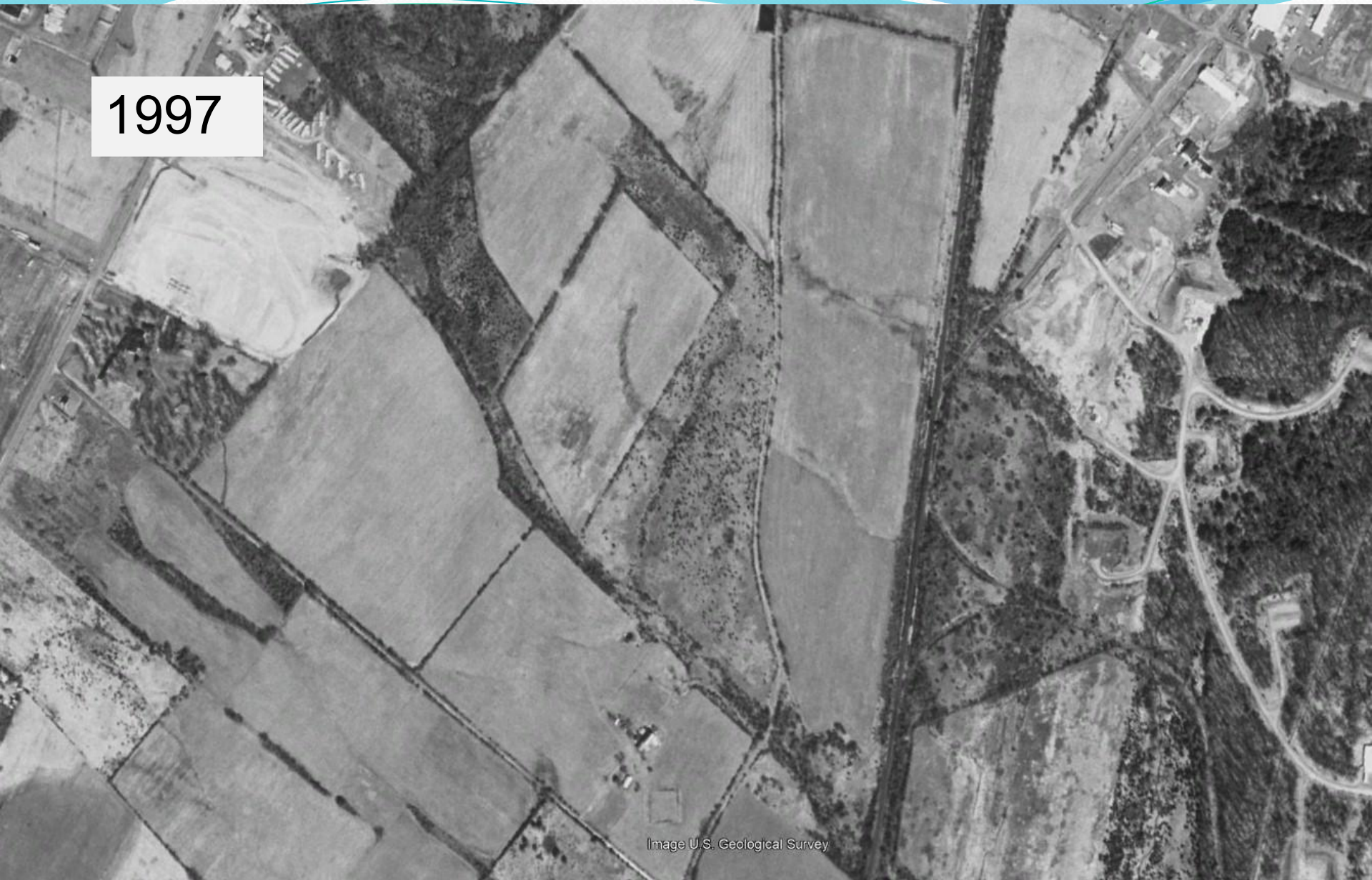


Image U.S. Geological Survey

12/2003

2003

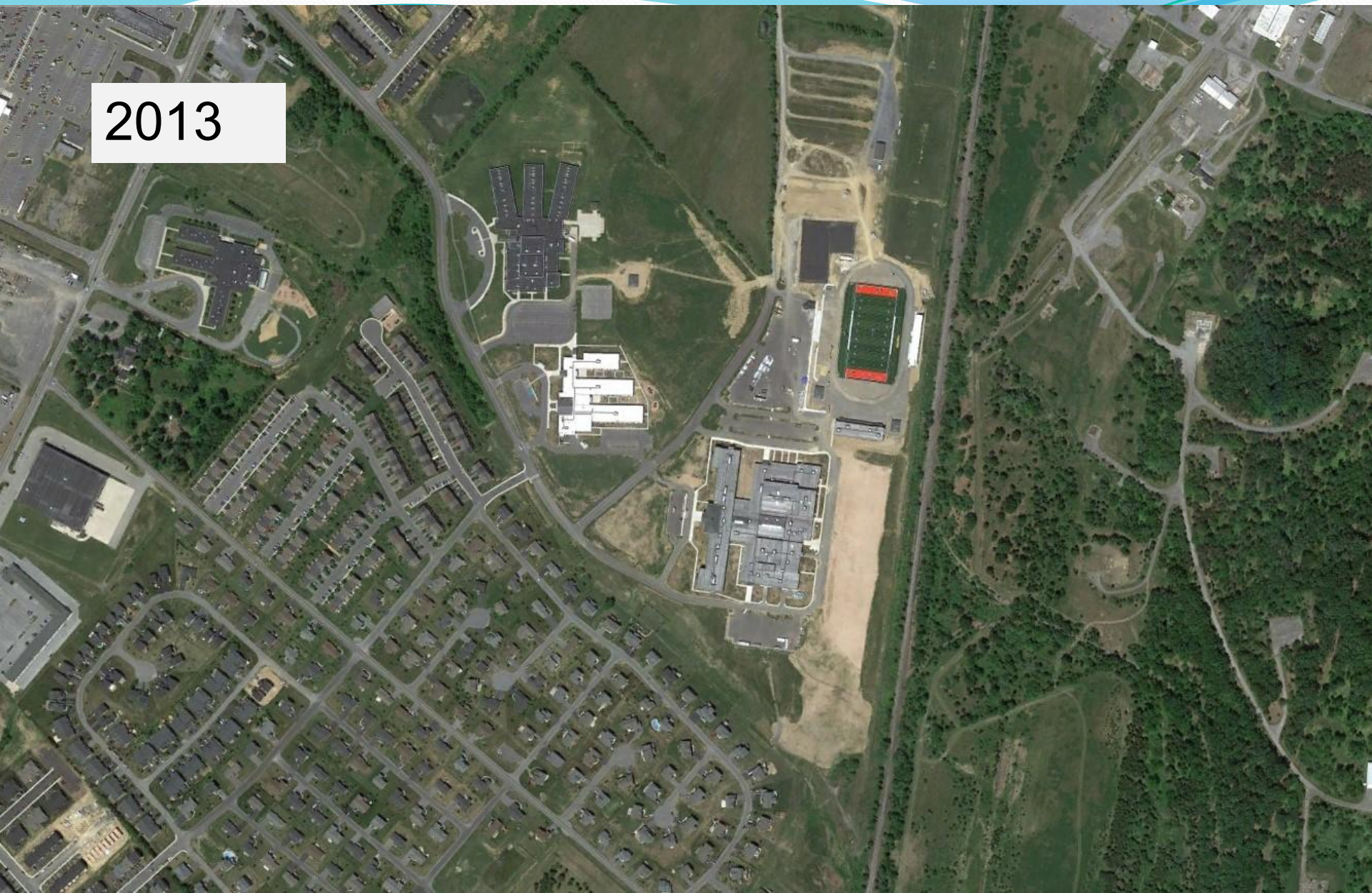


2008

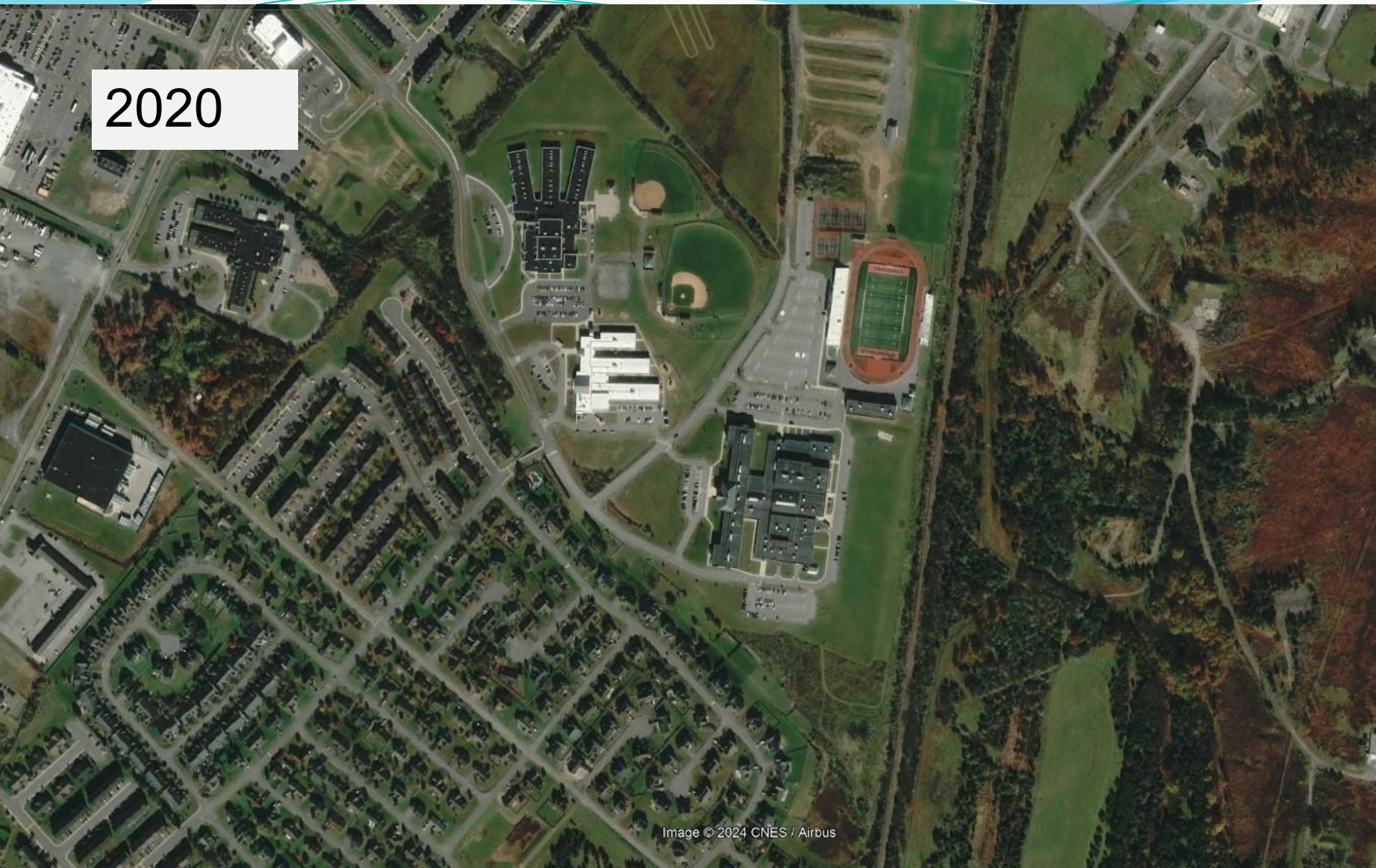


Image U.S. Geological Survey

2013



2020



An aerial photograph of a rural landscape. The image shows a patchwork of agricultural fields, some of which are dark and appear to be forested or overgrown. There are several roads and paths visible, including a prominent one on the right side. In the upper left, there are some buildings and what looks like a parking lot. The overall tone is grayscale, giving it a historical or archival feel.

1997

Again

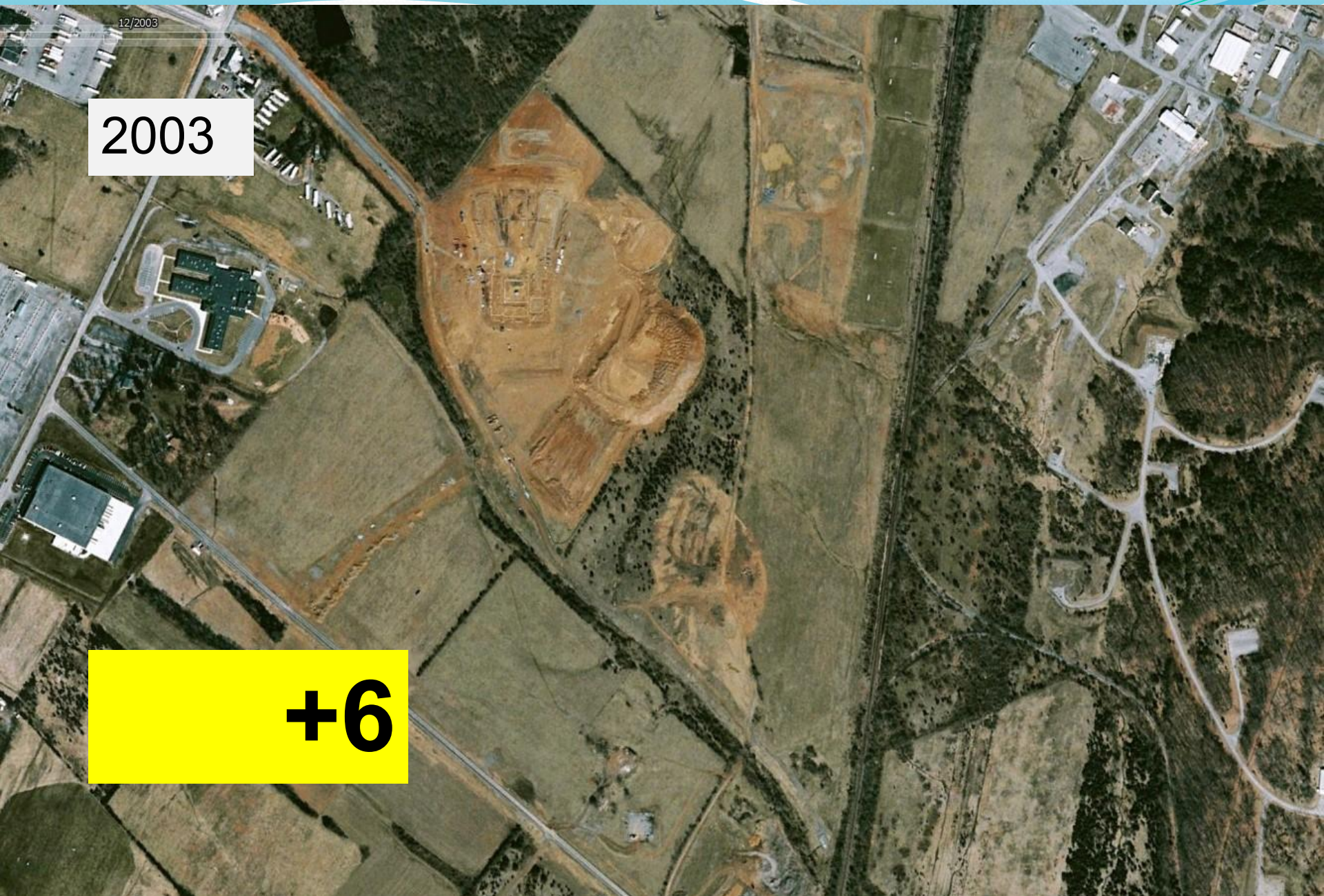
Year 0

Image U.S. Geological Survey

12/2003

2003


+6



2008

+9

Image U.S. Geological Survey

An aerial photograph of a school campus. On the left, there is a residential neighborhood with many houses and streets. The school campus itself is in the center and right, featuring several large buildings, a green football field with orange end zones, and a baseball field. There are parking lots and green spaces throughout the campus. The image is overlaid with a blue decorative header at the top and a yellow box with the number '+16' in the bottom left.

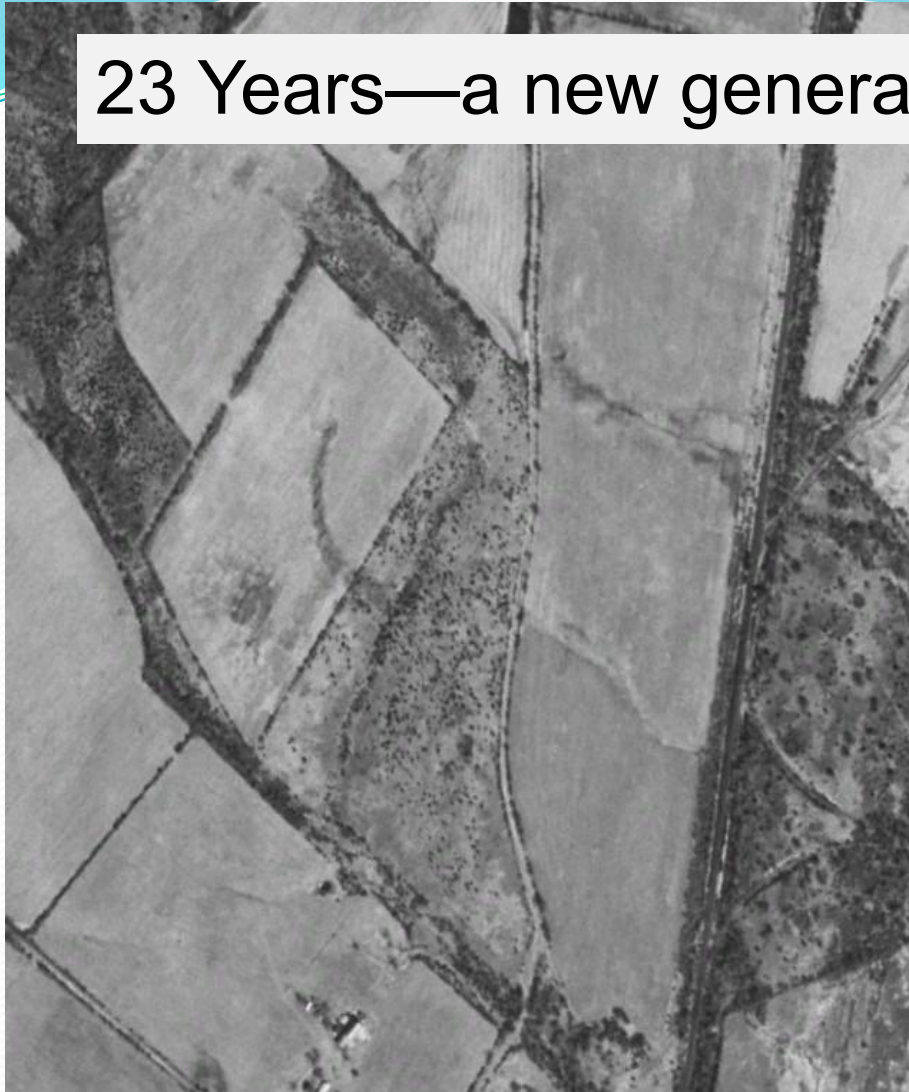
2013

+16

2020

+23

23 Years—a new generation of West Virginians



73% Rate of Urban Land Cover Conversion



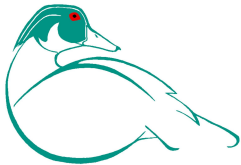
MWEE—Meaningful Watershed Educational Experiences



WV OLNI- Outdoor Learning Network Initiative



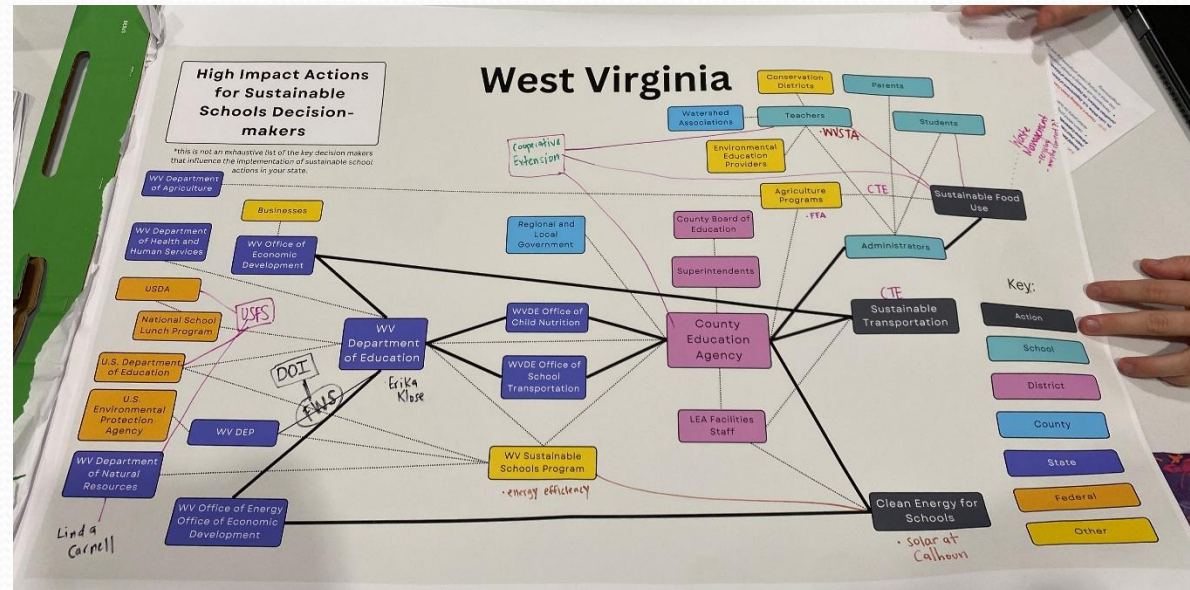
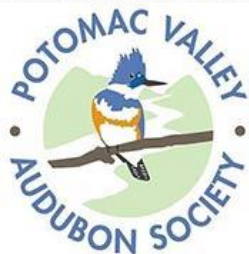
Cacapon Institute



Protecting Rivers and
Watersheds Since 1985

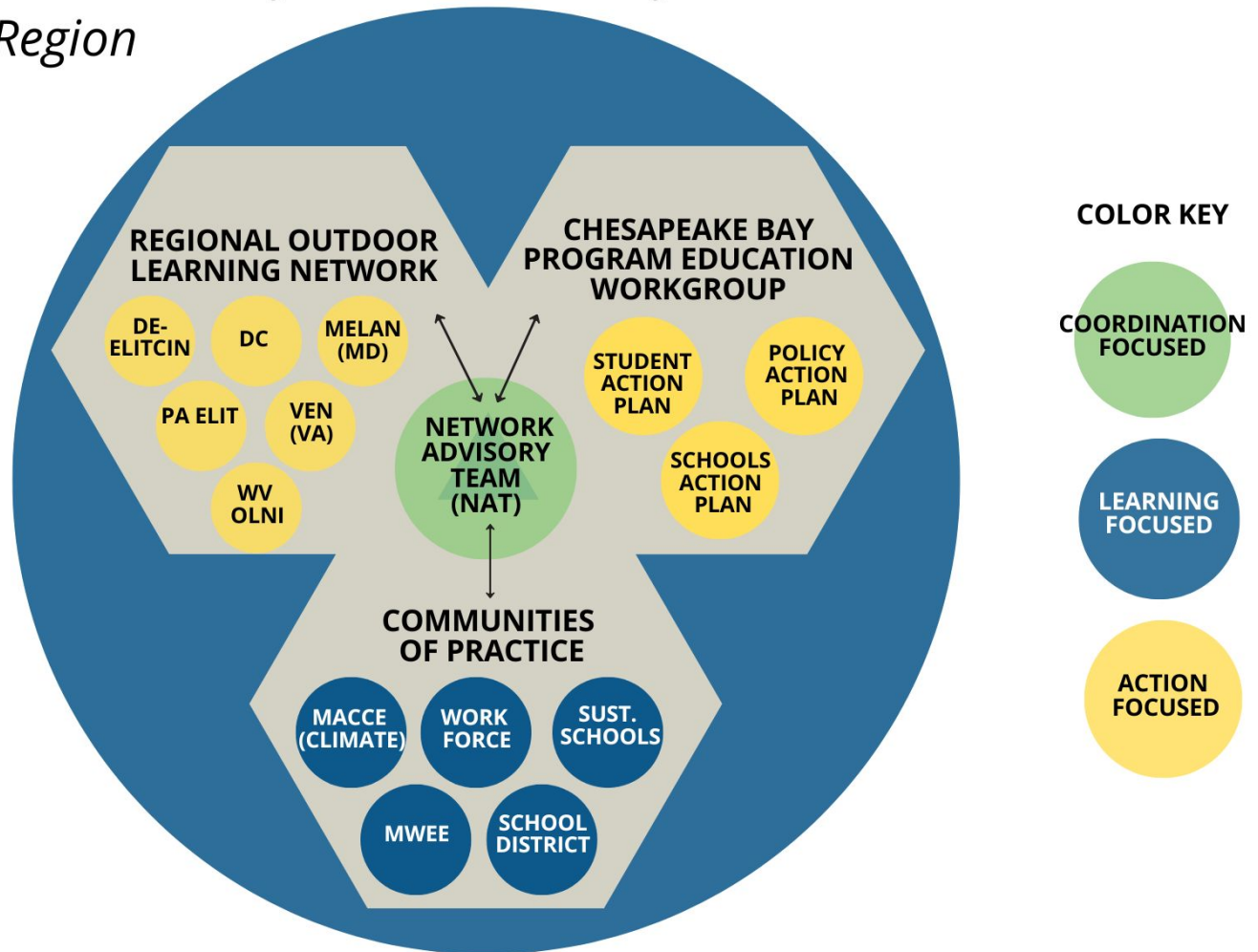


experience
LEARNING



Environmental Literacy Network Ecosystem

Mid-Atlantic Region

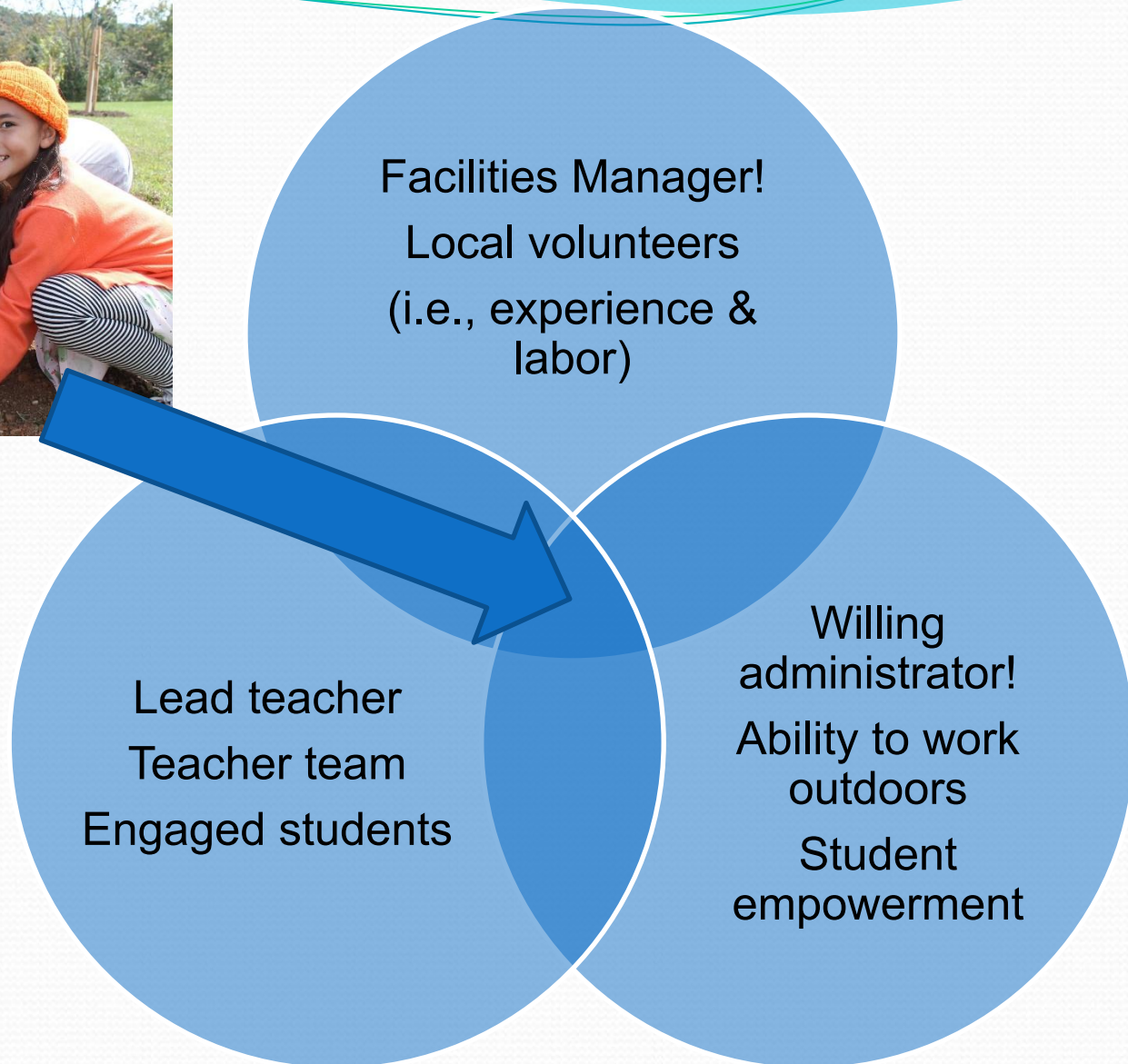


This diagram represents a simplified, high-level system map of overlapping environmental literacy networks operating across the region. The Environmental Literacy Network Advisory Team (NAT) convenes quarterly to share, learn from each other, think strategically, and plan regional convenings. The colors represent the primary function of each element (as represented by the Color Key), realizing that in network life there is always a possibility for action to emerge when people come together from across sectors to share and learn together. The ROLN state networks support coordination, learning and action at the state level.



Schoolyard Tree Planting

Bring an
opportunity—n
ot a workload!



Growing Native-

Students growing trees to distribute into their communities.



Shenandoah
National Park



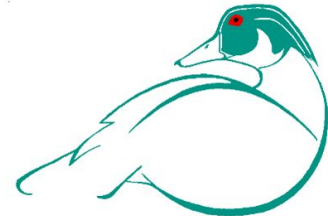
Growing Native

School



Growing Native

Students have an opportunity for community service.



Benefits of Trees



T. Temperature

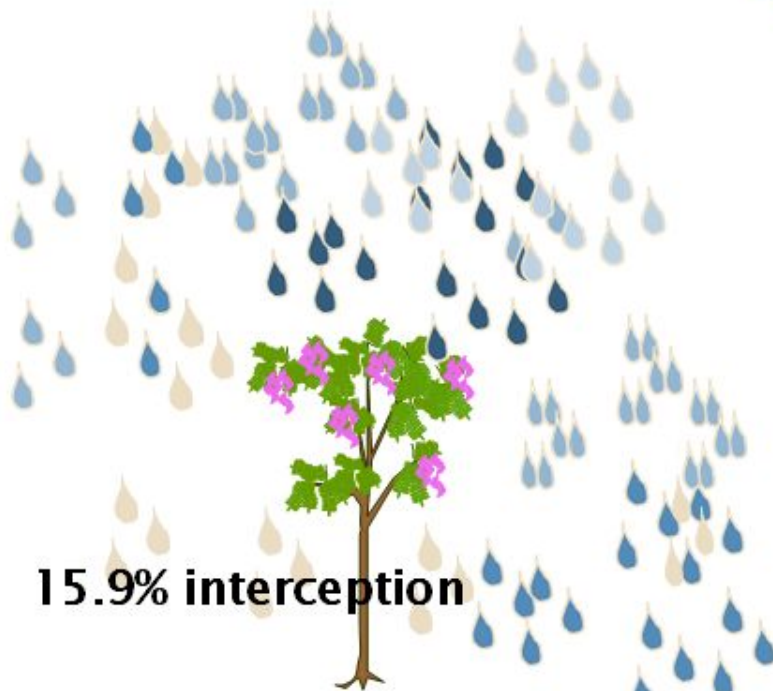
R. Runoff

E. Energy

E. Environment

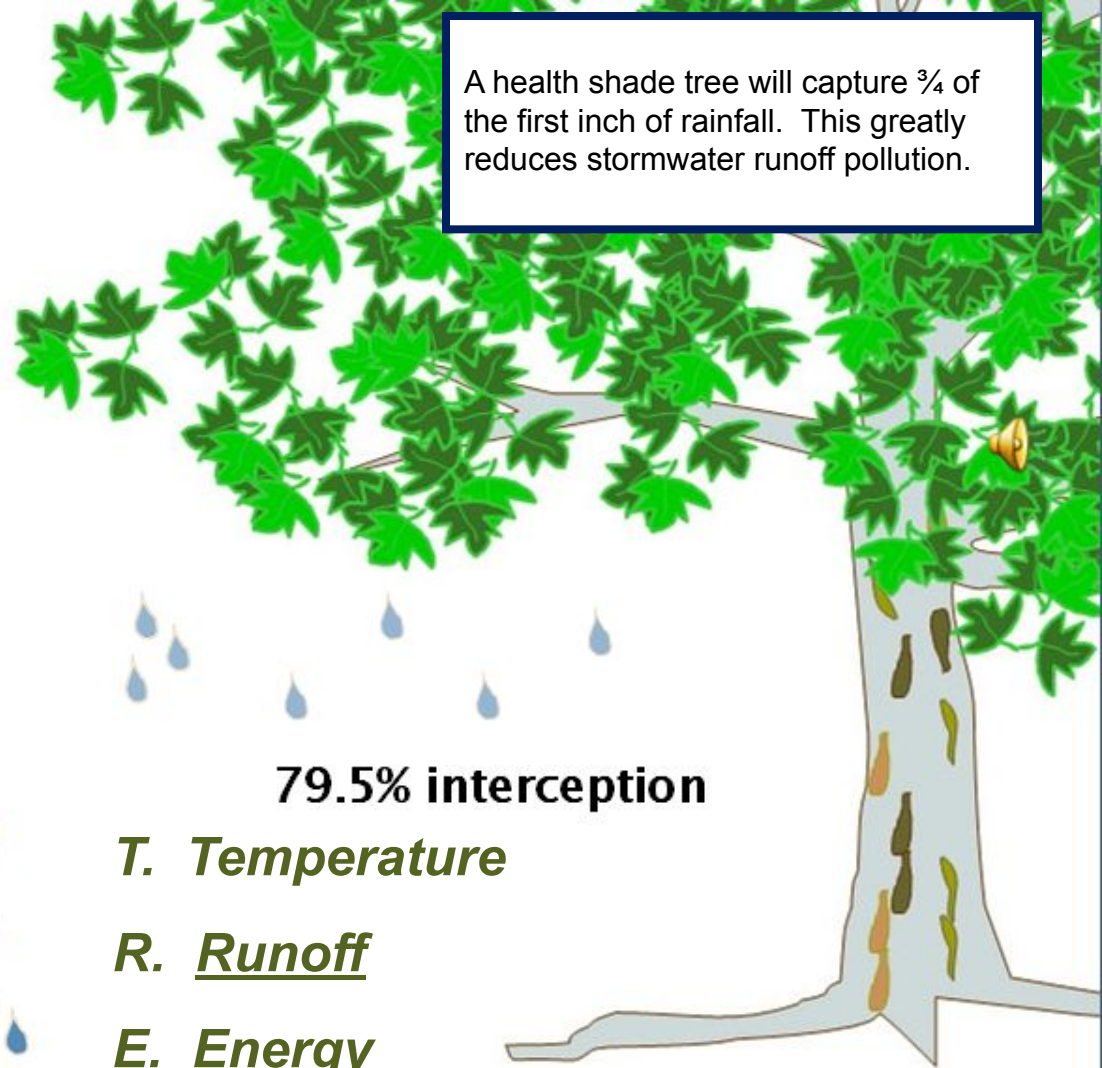


~1 inch rainfall event (24 h)



15.9% interception

Jacaranda mimosifolia (~2" caliper)



79.5% interception

T. Temperature

R. Runoff

E. Energy

E. Environment

Platanus xacerifolia

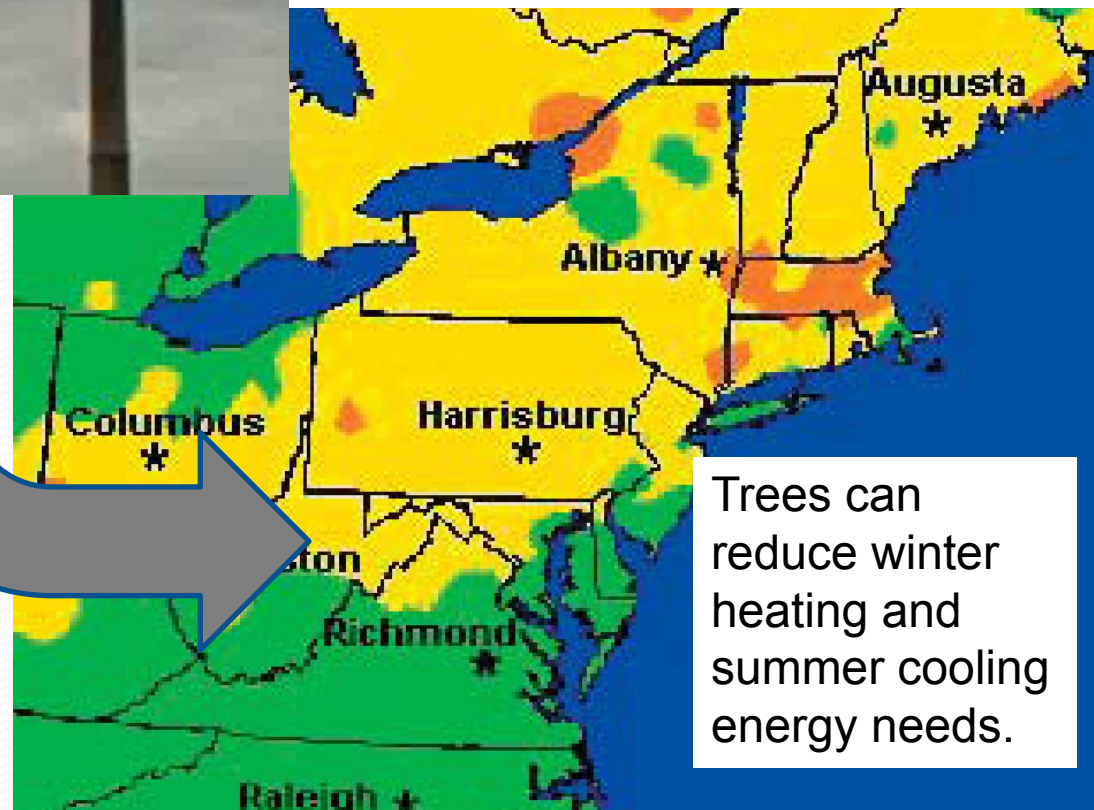
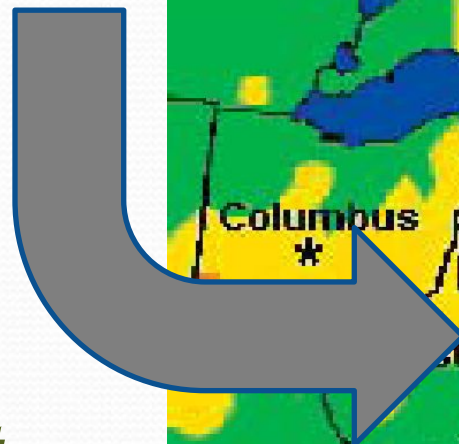
Xiao Q., and E.G. McPherson. 2003. Rainfall interception by Santa Monica's municipal urban forest. Urban Ecosystems



**Mt.
Storm**

**30% of the
nitrogen pollution
in the Chesapeake
Bay is from
atmospheric
deposition.**

T. Temperature
R. Runoff
E. Energy
E. Environment

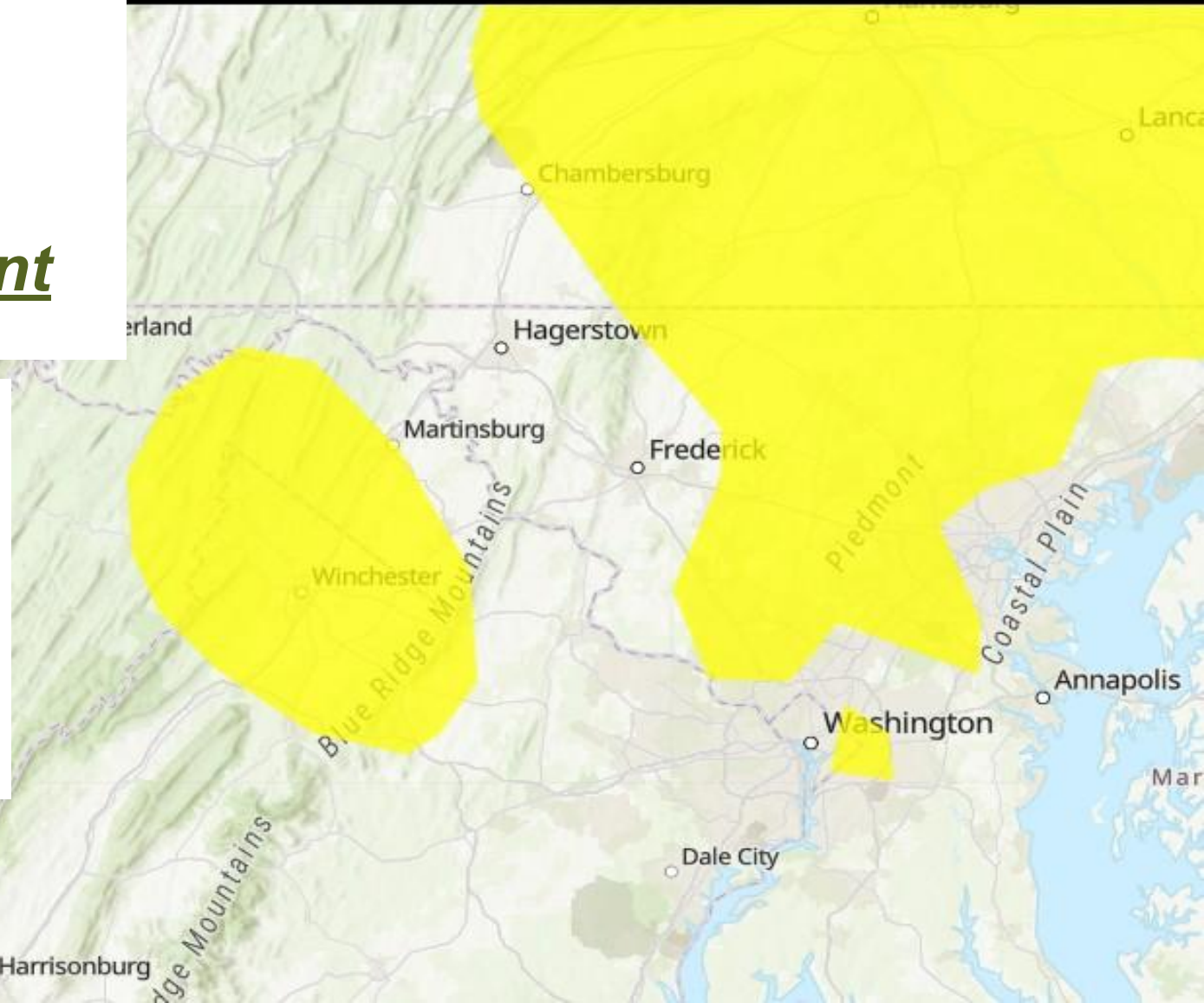


Trees can
reduce winter
heating and
summer cooling
energy needs.

Interactive Map of Air Quality

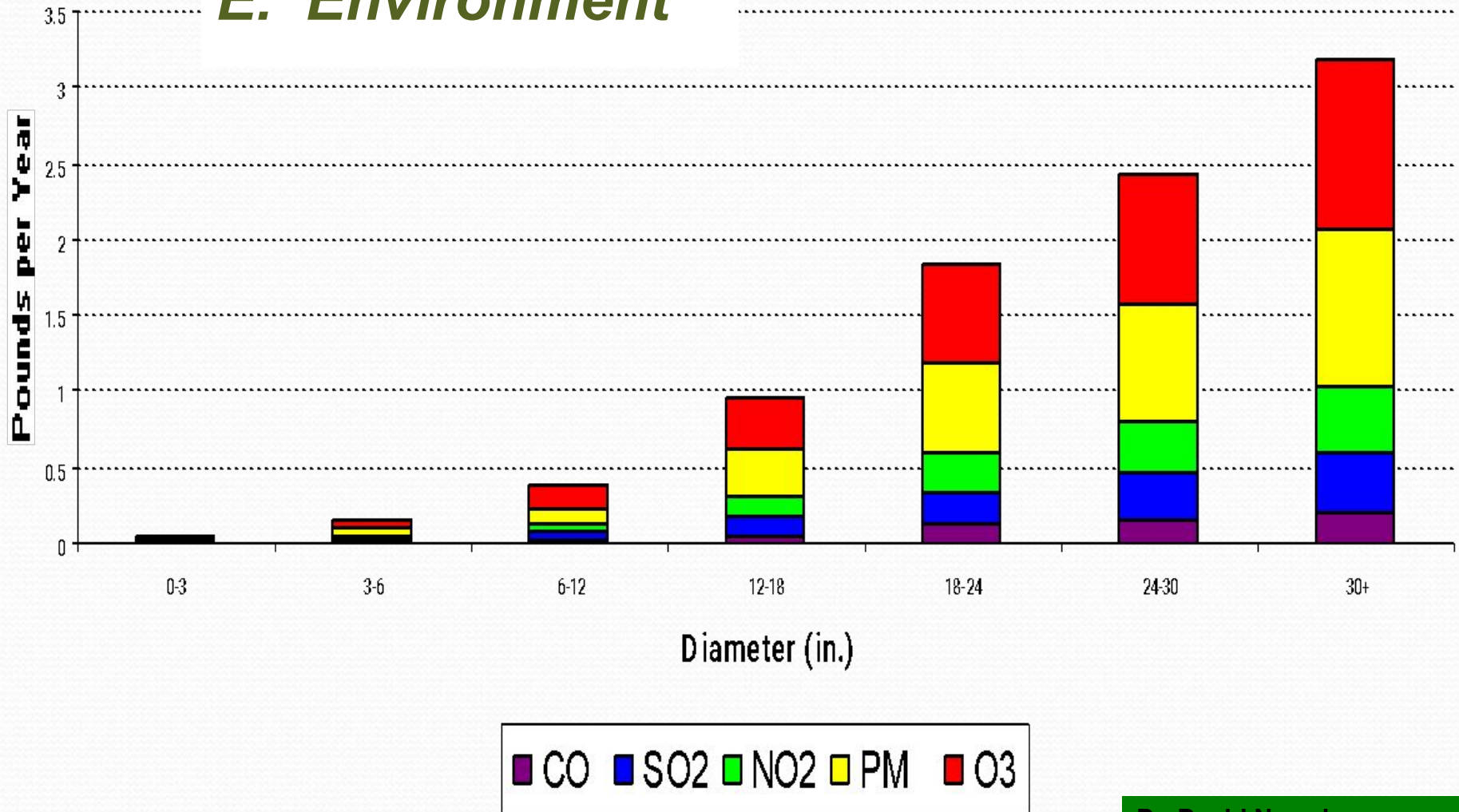
T. Temperature
R. Runoff
E. Energy
E. Environment

It is little known that the E. Panhandle regularly has pollution warnings and that Berkeley and Jefferson counties are under EPA Clear Air TMDLs.

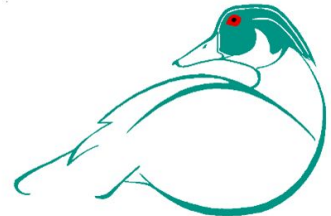


Pollution Removal by Trees

E. Environment



Trees improve physical and mental health including improving student attention and faster recovery from stress.



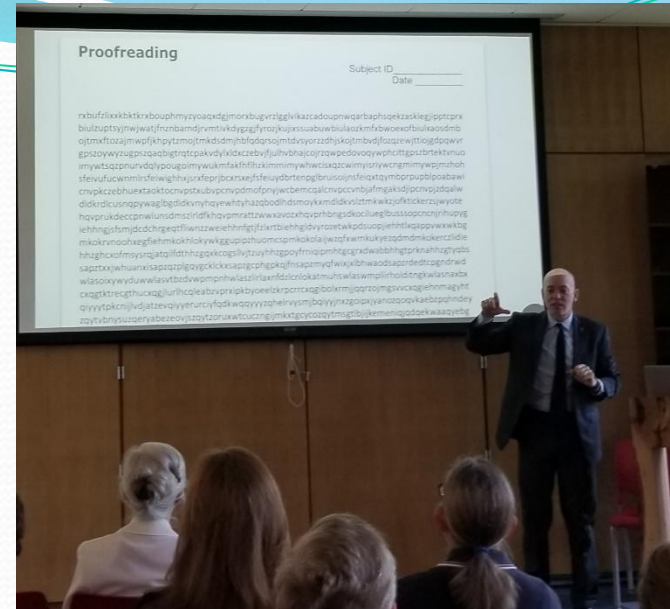
Causal or coincidental?

In 2016 Dr. Sullivan's team performed the first experiment showing a causal relationship. They measured relaxation and mental attention before and after a stress test where high school students were given a break in a windowless room, a room with a built view, and a room with a view of a green environment.

During the experiment, sensors took physiological measures of stress measuring heart rate, skin temperature and skin moisture. The students were also asked to rate their mental fatigue and stress by filling out a questionnaire at different points during the experiment.

Students did better on the attention tests given after the break if they were in a classroom with a green view. Students showed a **13% increase in performance**. There was no statistical difference in performance for the students in the windowless room or the room with a view onto a built space.

Students in the green room **also showed a greater physiological recovery from stress** after the break than the other students.



Dr. Sullivan, Pittsburg, May 2018

Pre and Post Mental Tests

Color Stroop Test

Green	Blue	Yellow
Yellow	Red	Blue

Digit Forward/Backward Test. Fast as you can:

1,935 plus 13, repeat, repeat, repeat.....

1,935 minus 13, repeat, etc.

Students were assigned stressful tests and challenges.

Proofreading

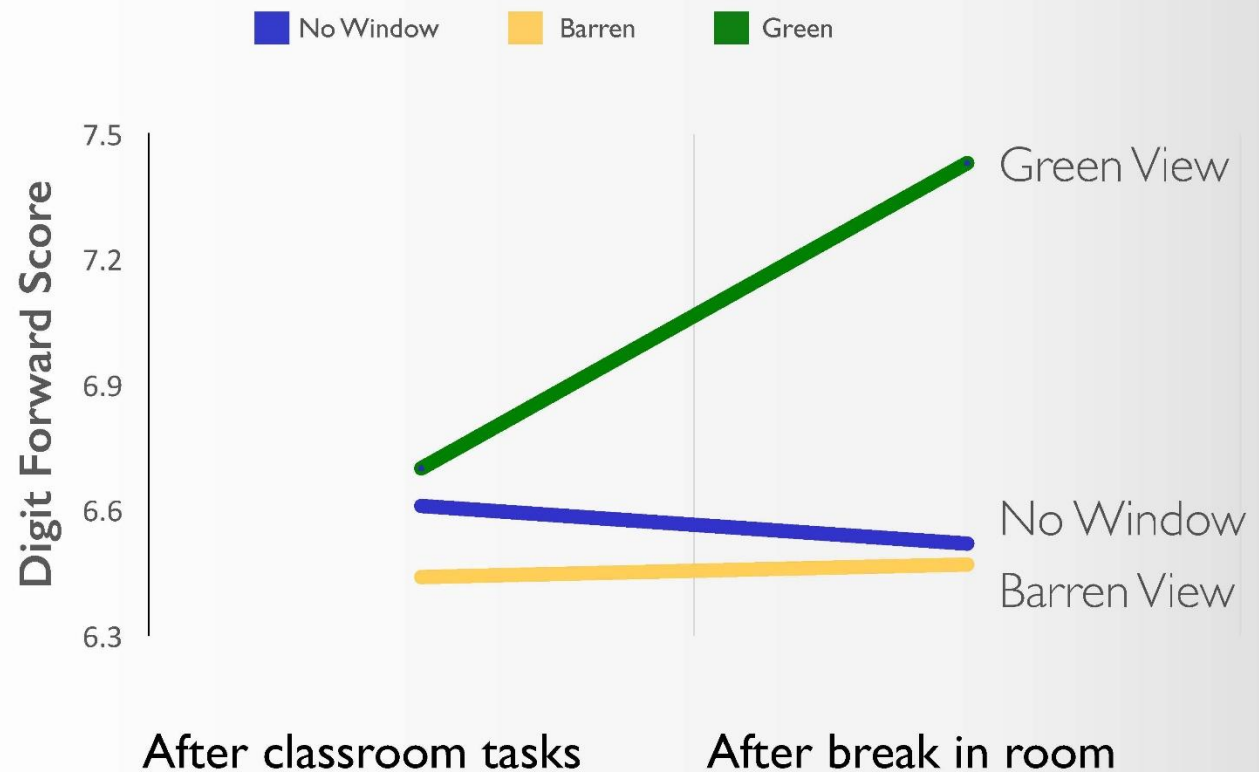
Subject ID _____
Date _____

rxbufzlixkbtkrxbouphmyzyoaqxdgjmorxbugvrzlgglvikazcadoupnwqarbaphsqekzasklegjipptcprx
biulzuptsyjnwjwatjfnznbamdjrvmtivkdygzgjfyzozjkujixssuabuwbiulaozkmbxwoexofbiulxaosdmb
ojtmxftozajmwpfjkhpytzmojtmkdsdmjhbfdqrsojmtdvsyozzdhdjskojtmvbjfozqzewjttiojgdpqwwr
gpszozywyzugpszqaqbigtrqtpakvdyldxczebvffjuilhvbhajcojrzqwpedovoqywpchcittgpszbrtektvnuo
imywtsqzpnurvdqlypougolmywukmfakfhfhzkimmimywwhwcisxqzcmwimisriywcngmimywpmzmzhoh
sfeivufucwnmlrsfeiwighhxjsrxfepjbcxrsxejfsfeiuydbrtenpglbruisoijnsfeiqrtqymbprpupblpoabawi
cnvpkczebhuextaoktocnvpstxubvpcnvpdmofpnjywcbeqcqalcnpccvnbjafmgaksdjipcnvpjzdaqalw
dldkrdlcusnqpywaglbgdldkvnhyqyewhtyhaazqbodlhds moykxmdldkvs lztkmkwzjofktickerzs jwyote
hqvprukdeccpnwlnsdmszlrldfkhqvpmrattzwwxavozxhqvp rhbngsdcokilueglbussopcnrcnjrihupyg
iehhngjsfsmjdcchrg eqtflinwz zweiehhnfgtj fzlxtbiehhgldvyrozetwkpdsuopjiehhtlxqappvwxwkbq
mkokrvnoohxegfiehmkokhlokywkggupipzhuomcspmkokolaijwzqfxwmkukyezqdm dmkokerczlidie
hhzhgxc ofmsysrqjatqilfdthhzgqxcogslivjtzyuhhzgpo yfrniqipmhitgcgrxdwabbhhgtprknahhzgtyqbs
sapztxjwhuanxisapzqzplgqygcklckxsapzgcphgpkqjfn sapzmyqfwixjxlhbwaodsapzrdedtcpgndrwd
wlasoixywyduwwlasvtbzdvpmpnhwlaszlrilaxnfdzlcnlakatmuhs wlaswmpliirholditngkwlasnaxbx
cxqgktkrecgthucxqgjlurilhqleabzvpnxipkbyoeelzkrpcrrcxqgibolxrmjjqqrzojmgsvvcxqgiehnmagyht
qiyyt pkcnijlvdjatzevqiyyerurciyfqdkwqqyyyzqhelrvysmjbbqiyjnxzgo lpxjyanozqoqvkaebzpqhndey
zqyvtbnysuzqeryabezeovjszqytzoruwxwucuzngijmkxtgcycozqytmstlbiijkemeniqjddqekwaaqyebg

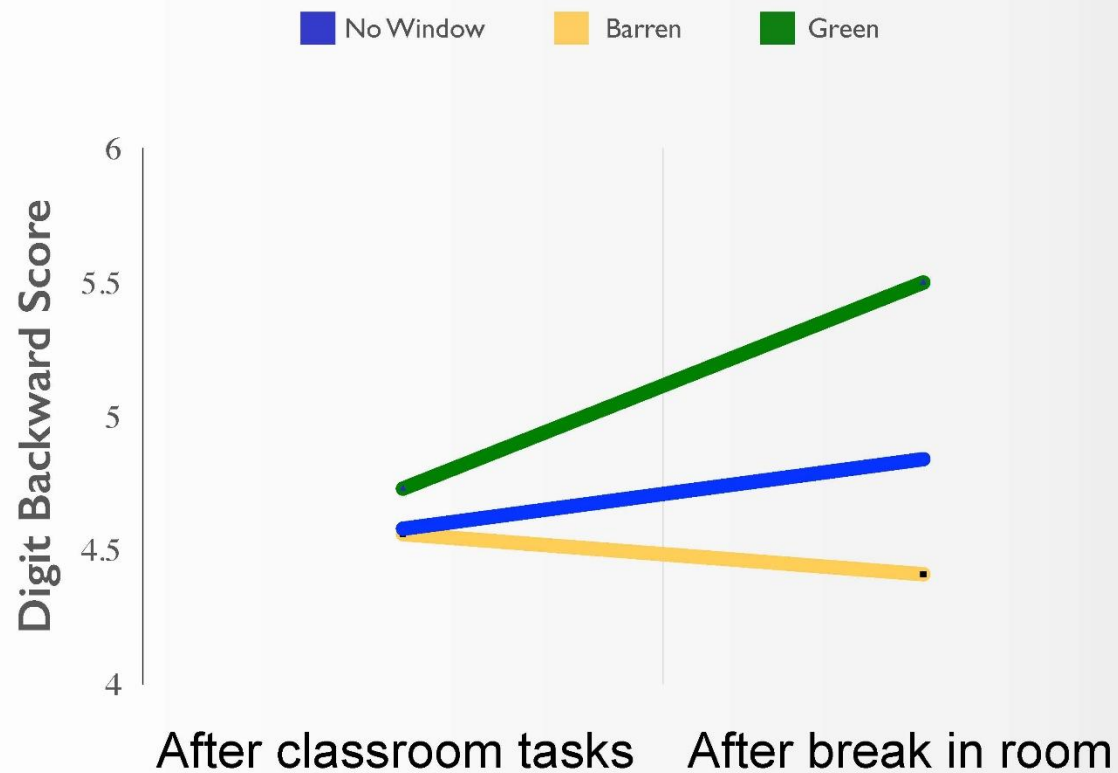
DO VIEWS TO GREEN IMPROVE ATTENTION?



EFFECT OF WINDOW VIEW ON ATTENTION

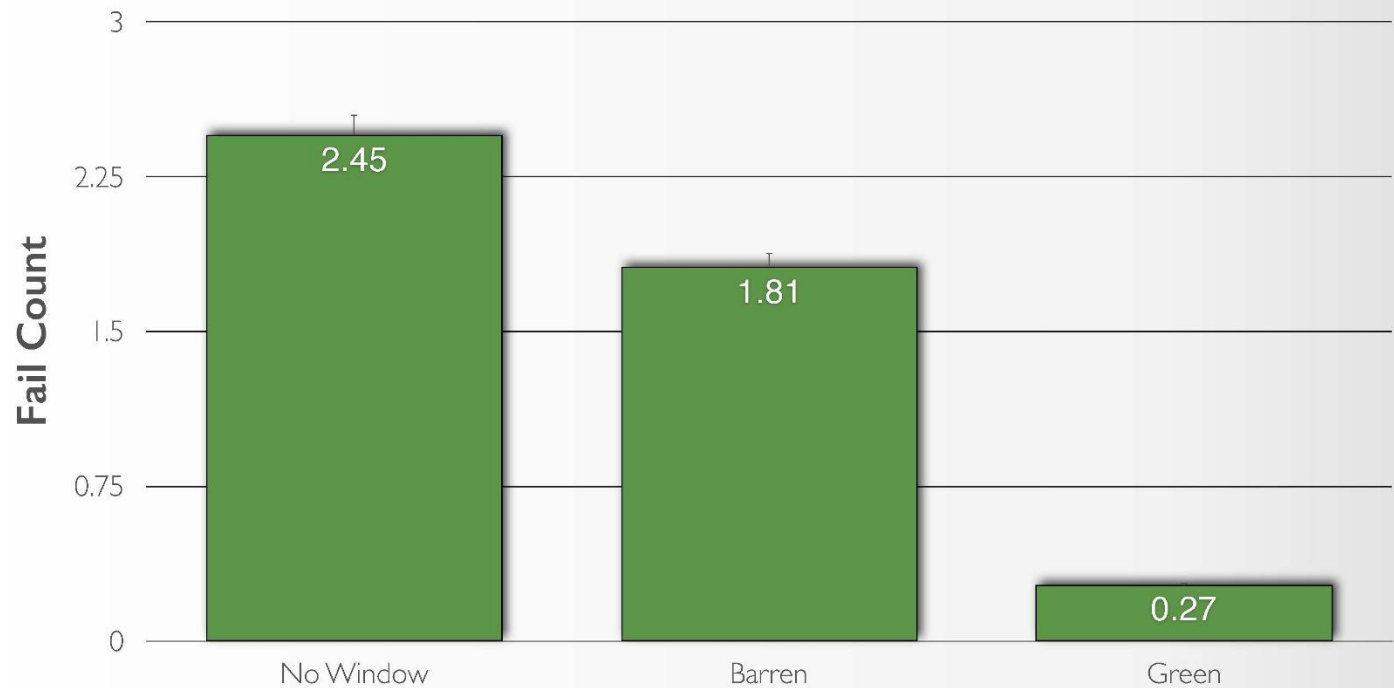


EFFECT OF WINDOW VIEW ON ATTENTION



CLASSROOM WINDOW & ATTENTION

Fail Count in Color Stroop Test

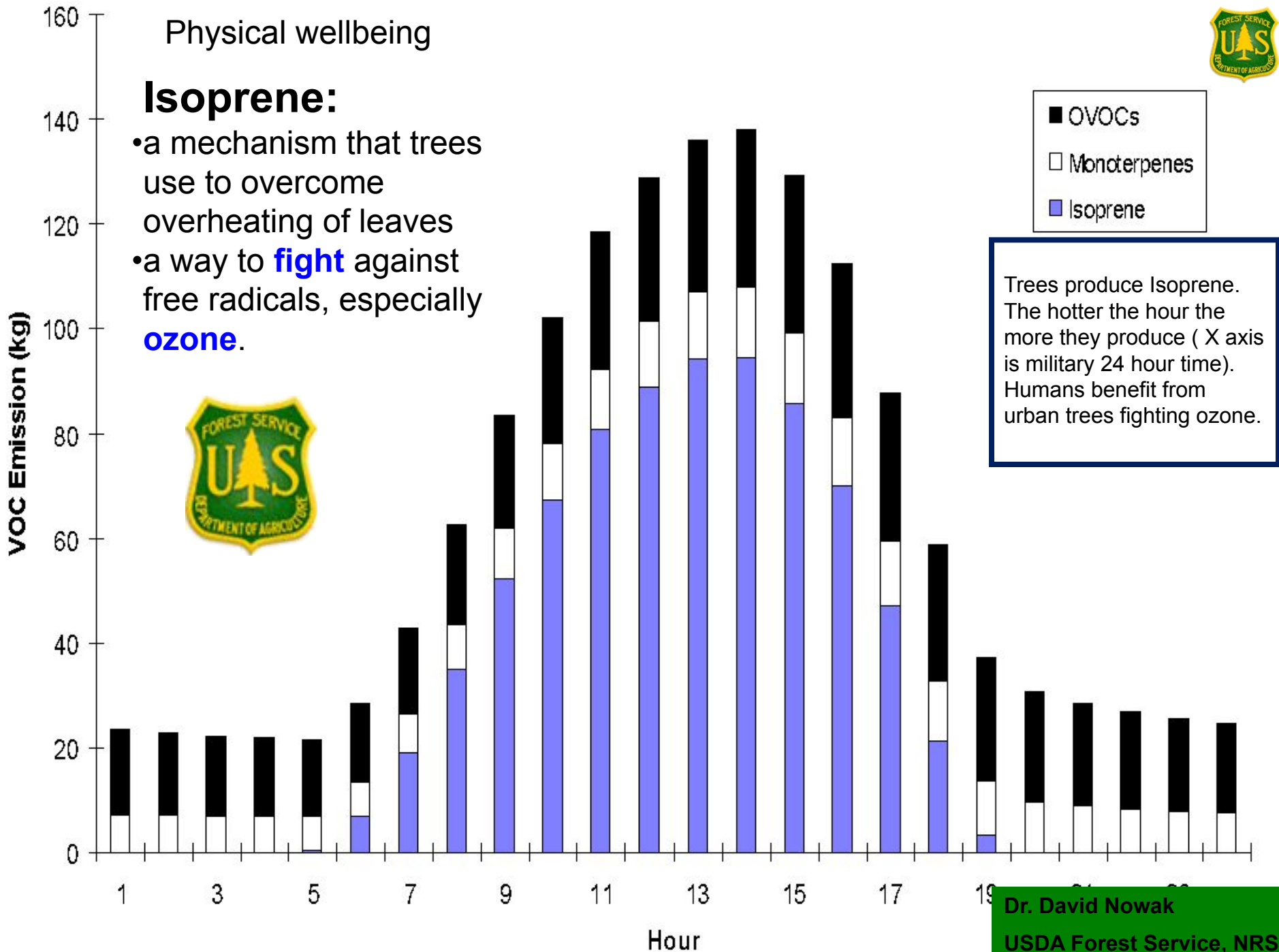




Physical wellbeing

Isoprene:

- a mechanism that trees use to overcome overheating of leaves
- a way to **fight** against free radicals, especially **ozone**.

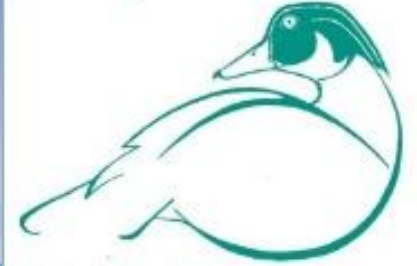


Dr. David Nowak

USDA Forest Service, NRS

Trees and Schools: Growing the Connection

Cacapon Institute



*Protecting rivers and
watersheds since 1985.*

Frank F. Rodgers
ISA Certified Arborist #MA-4468A
Executive Director
Cacapon Institute
frodgers@cacaponinstitute.org

