

STEWARDSHIP NETWORK VISUALIZATION

Stewardship Work Group
May 16



Why Create a Chesapeake Steward Map?

Advance the Stewardship Work Group's Goals:

Increase the number and diversity of trained and mobilized citizen volunteers with the stewardship knowledge and skills needed to contribute to Chesapeake Bay Program outcomes and to enhance the health of their local watersheds.

By using the Chesapeake Steward Map....

Users can help to build the capacity and impact of stewardship groups. The map will help to:

- Increase connectivity and communication among stewards
- Increase knowledge and awareness of available resources
- Increase collaborations and stronger relationships
- Reduce duplications & increase redundancies where needed

"We want more stewardship and partners are the way to get there. So how do we connect them?"

-Mike Weyand

Steering Committee

Alexis Dickerson
Amy Handen
Ashley Traut
Britt Slattery
Dexter Locke
James Looper
Jennifer Starr
John Wolf

Laura Noll
Lauren Taneyhill
Marissa Baldine
Meredith Lemke
Michael Weyand
Nancy Sonti
Rachel Felver
Shannon Sprague



Stewardship is defined as

Actions carried out by an individual, group, or network of people that achieves healthy lands, waters, and a vibrant Chesapeake Bay watershed.

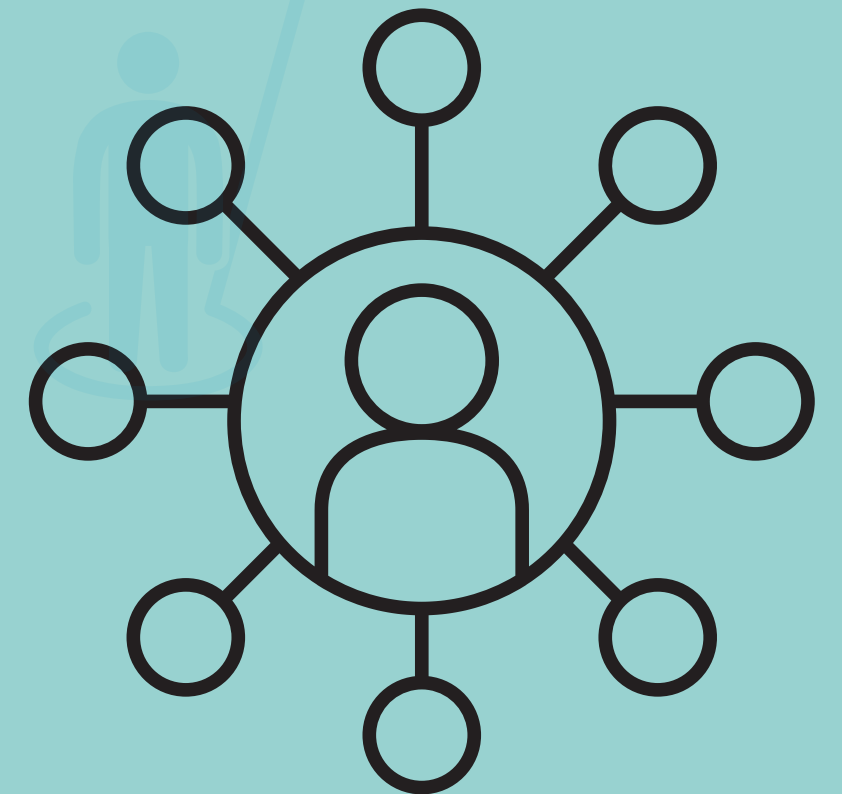
(Steering Committee, December 2023)

CHESAPEAKE STEWARD MAP – AUDIENCE

People on the map are those working to enhance the health of the their local watershed or the Bay.

Initial Map Users

- Stewardship Goal Implementation Team
- Chesapeake Bay Program (coordinators & staffers)
- Coordinators of other networks (e.g. Chesapeake Gateway)
- Chesapeake Conservation Partnership
- Anyone interested in strategic matchmaking



STEWARDSHIP NETWORK VISUALIZATION

Aug 2023 – Sept 2024



AUG

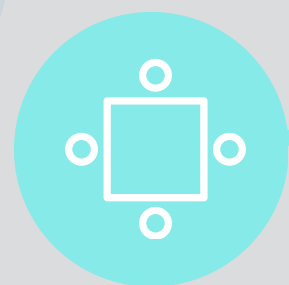
SEPT-DEC

JAN-MAR

MAY-JUN

JUL-AUG

SEPT



Steering
Committee
Kick Off
Meeting



Explore
purpose,
audience, and
connections.

Develop
questionnaire



Finalize
questionnaire

Invite people to
join the map



Invite people to
join (ongoing)

Assess the Map
& Recommend
Strategic
Matchmaking
(ongoing)



Host
Matchmaking
Sessions

Collect
Feedback



Develop
Recommendations
& Final Report



Explore the Map
What do you notice?

Next Steps



Ongoing Supports Needed

Group support with lead coordinator(s)

1. Outreach

- a. Add new people to the map
- b. Encourage people on the map to update their data

2. Socialize the map

- a. Provide ways to get people familiar with map
- b. Increase number of map ambassadors

3. **Assessment** – make sense of data

4. **Action** – use data to make strategic connections and decisions

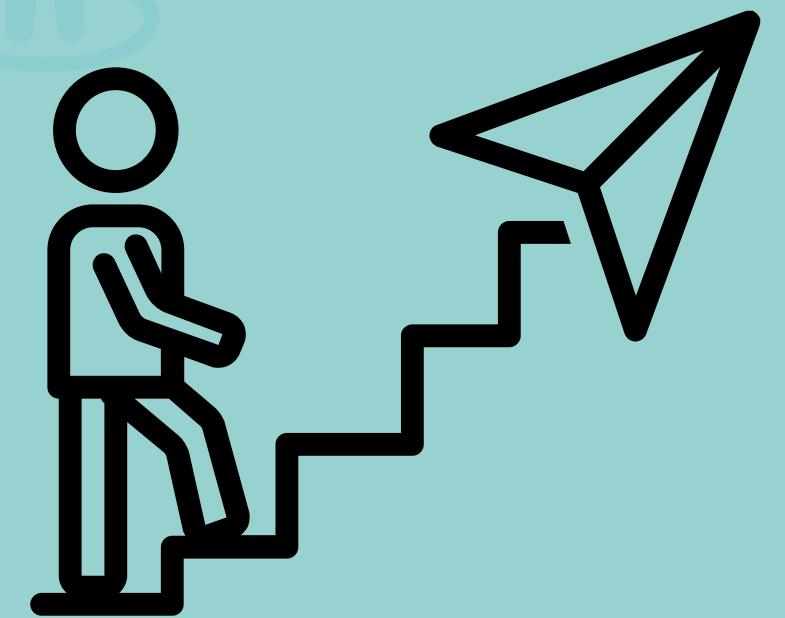
Management support provided by an individual

1. **Data** – standardize and clean data

NEXT STEPS

- Continue inviting people to join the map
- Open Office Hours – open space for folks to learn together & asks Qs
 - May 29, 10 am
 - June 4, 11 am
- Assess the map and identify strategic connections
- Host matchmaking sessions

HOW YOU CAN HELP...



Are you a steward working to improve the lands and waters of
the Chesapeake Bay Watershed?

Join the...

CHESAPEAKE
STEWARD

MAP
GET CONNECTED



Chesapeake Bay Program
Science. Restoration. Partnership.

