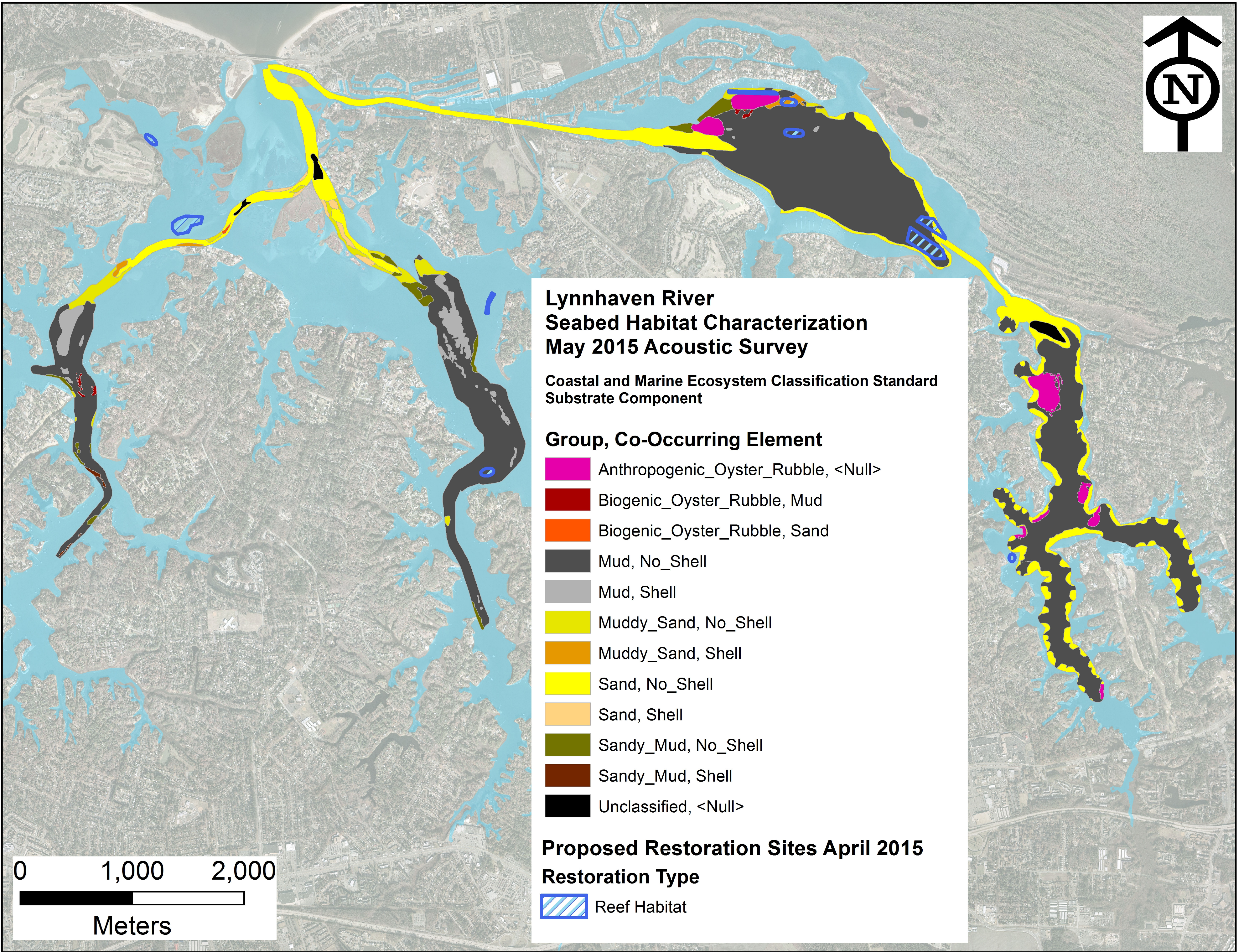


Lynnhaven River Seabed Mapping and Habitat Characterization

Jay Lazar, Andrew McGowan, David Bruce
NOAA Chesapeake Bay office
May 2015



Habitat Characterization

Mosaiced sidescan sonar, singlebeam classification, and ground truthing data were aggregated to create a map identifying the distribution of seabed materials and habitats.

Due to restrictive depths, we were able to map approximately 29.5 % of the river bottom. Mud, sand, sandy mud, and muddy sand (with no shell) comprised 92% of the area characterized.

Group	Co-Occurring Element	Number Habitat Polygons	Min. Acres	Max. Acres	Sum Acres	Percent Area
Anthropogenic_Oyster_Rubble	<Null>	8	1.1	17.0	48.1	3.4
Biogenic_Oyster_Rubble	Mud	6	0.0	1.4	3.2	0.2
Biogenic_Oyster_Rubble	Sand	1	0.6	0.6	0.6	0.0
Mud	No_Shell	21	0.0	369.8	928.8	64.9
Mud	Shell	19	0.1	17.1	38.9	2.7
Muddy_Sand	No_Shell	21	0.0	13.1	42.7	3.0
Muddy_Sand	Shell	3	1.4	5.5	8.8	0.6
Sand	No_Shell	60	0.0	141.6	308.8	21.6
Sand	Shell	7	0.6	2.3	9.1	0.6
Sandy_Mud	No_Shell	14	0.3	6.8	28.2	2.0
Sandy_Mud	Shell	4	0.1	1.3	1.9	0.1
Unclassified	<Null>	3	1.4	7.1	12.0	0.8
Total Acres =					1431.0	

Objectives

We used several acoustic techniques to map areas of the Lynnhaven that were accessible with a 30 foot survey vessel.

The information collected will provide baseline spatial data to be used for oyster restoration planning

Methods

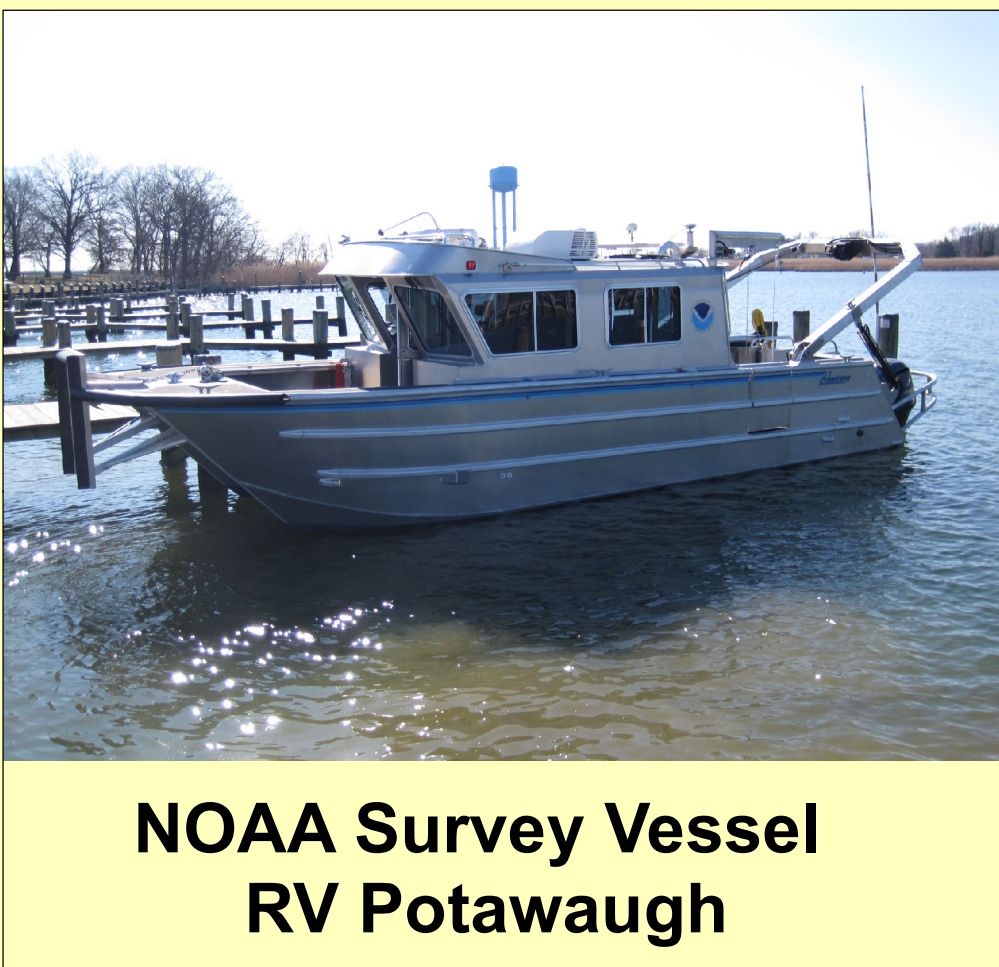
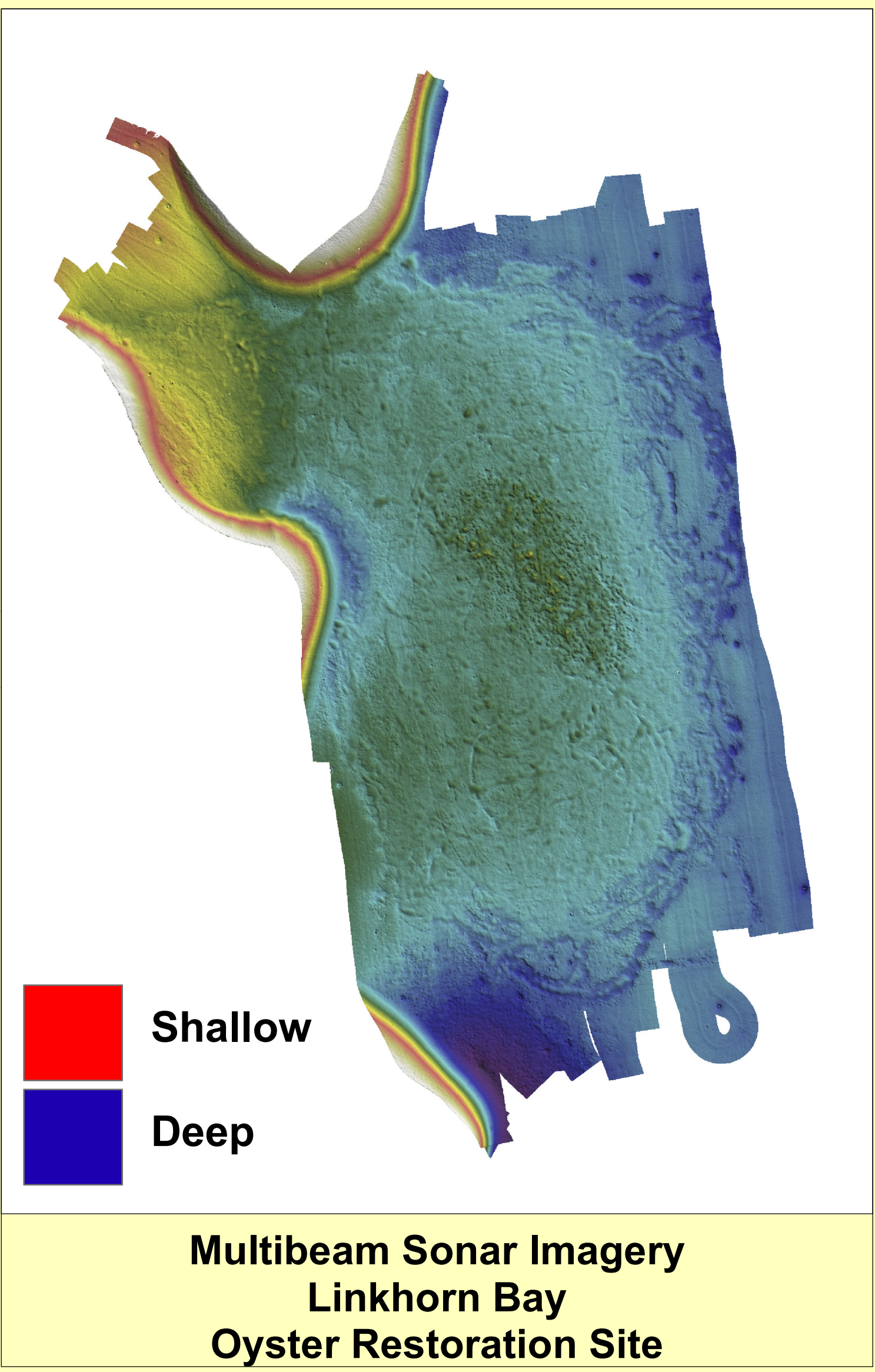
SIDESCAN SONAR:
Provides full coverage imagery of hard (shell) and soft (mud) seabed features.

MULTIBEAM SONAR:
Creates a full coverage grid of seabed depth.

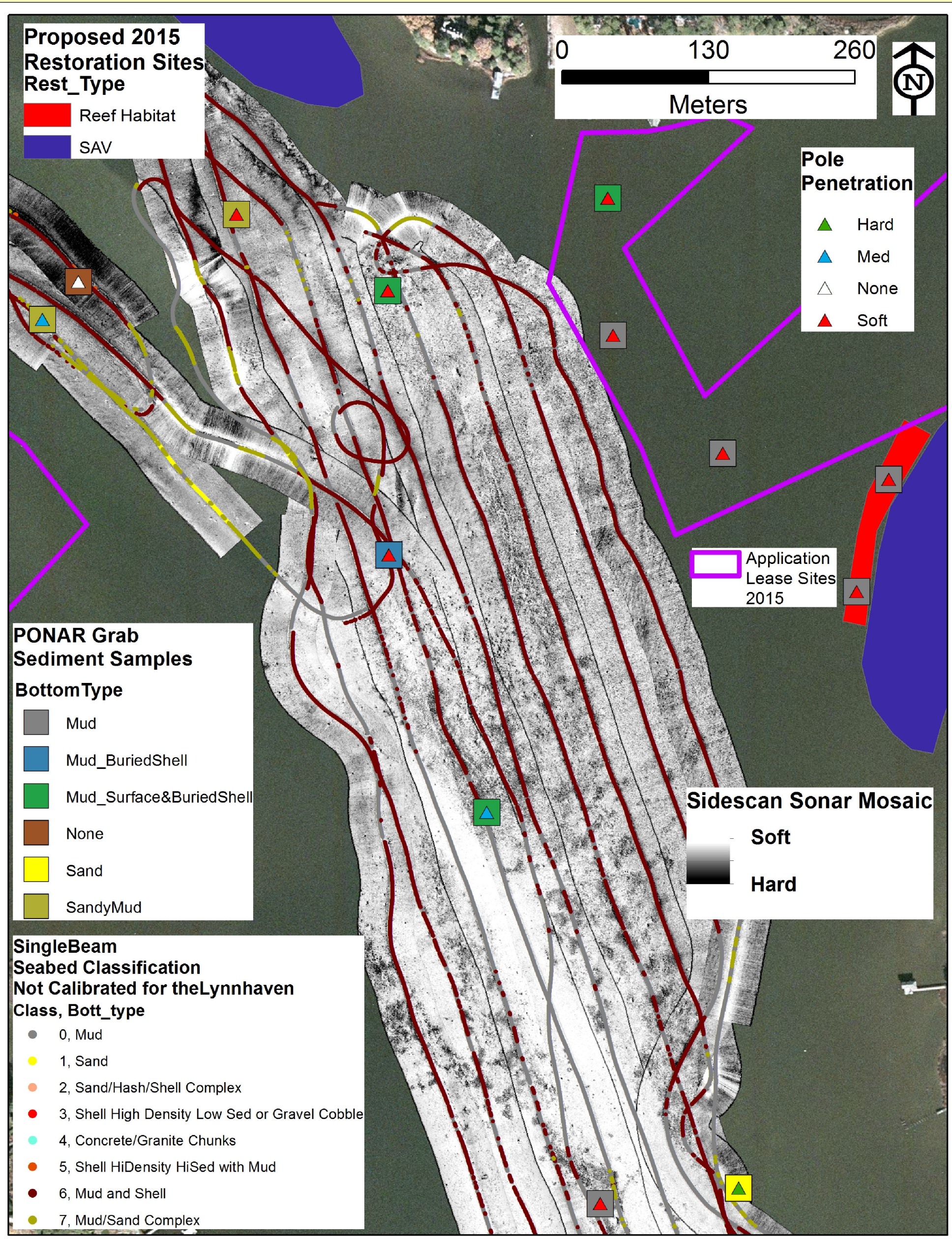
SINGLEBEAM CLASSIFICATION:
Identifies acoustically similar seabed based on hardness and roughness metrics from singlebeam echoes.

SUB-BOTTOM PROFILING SONAR:
Identifies hard sub-surface sediments suitable for oyster reef construction.

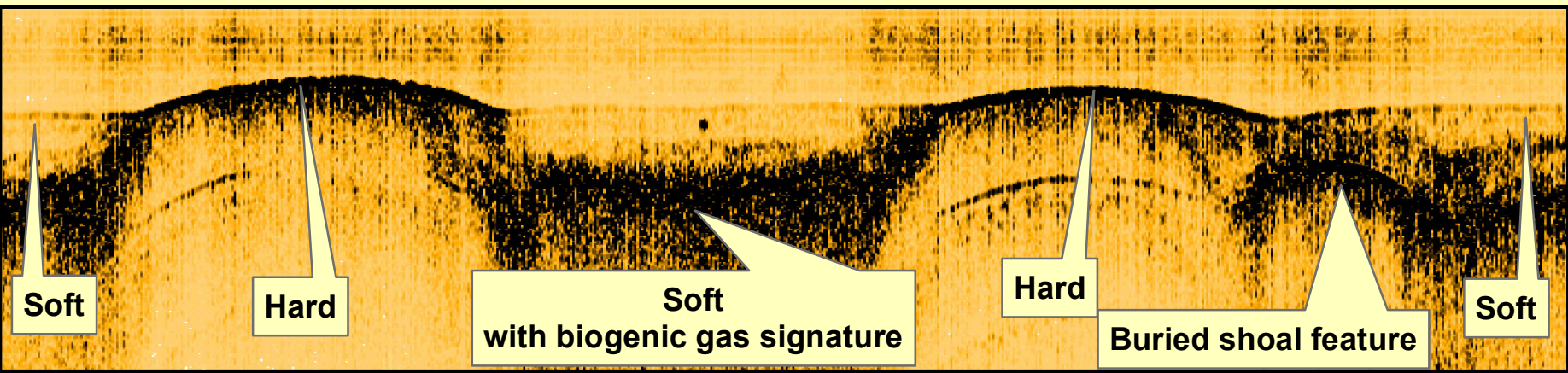
GROUND TRUTHING:
Sediment grabs and sounding poles provide validation of sonar survey data



NOAA Survey Vessel
RV Potawaugh



Sidescan Sonar Mosaic and Other Survey Products in East Bay



Sub-Bottom Profile in Linkhorn Bay
Identification of hard sub-surface sediments suitable for oyster restoration



Ground Truthing with Sediment Grab