

# FISHERIES INDICATORS UPDATES

Bruce Vogt, GIT 1 Coordinator  
Management Board Meeting  
November 21, 2013



# OVERVIEW

- Management Board tasked the Fisheries GIT to review the following indicators and propose updates that align with current targets and management:

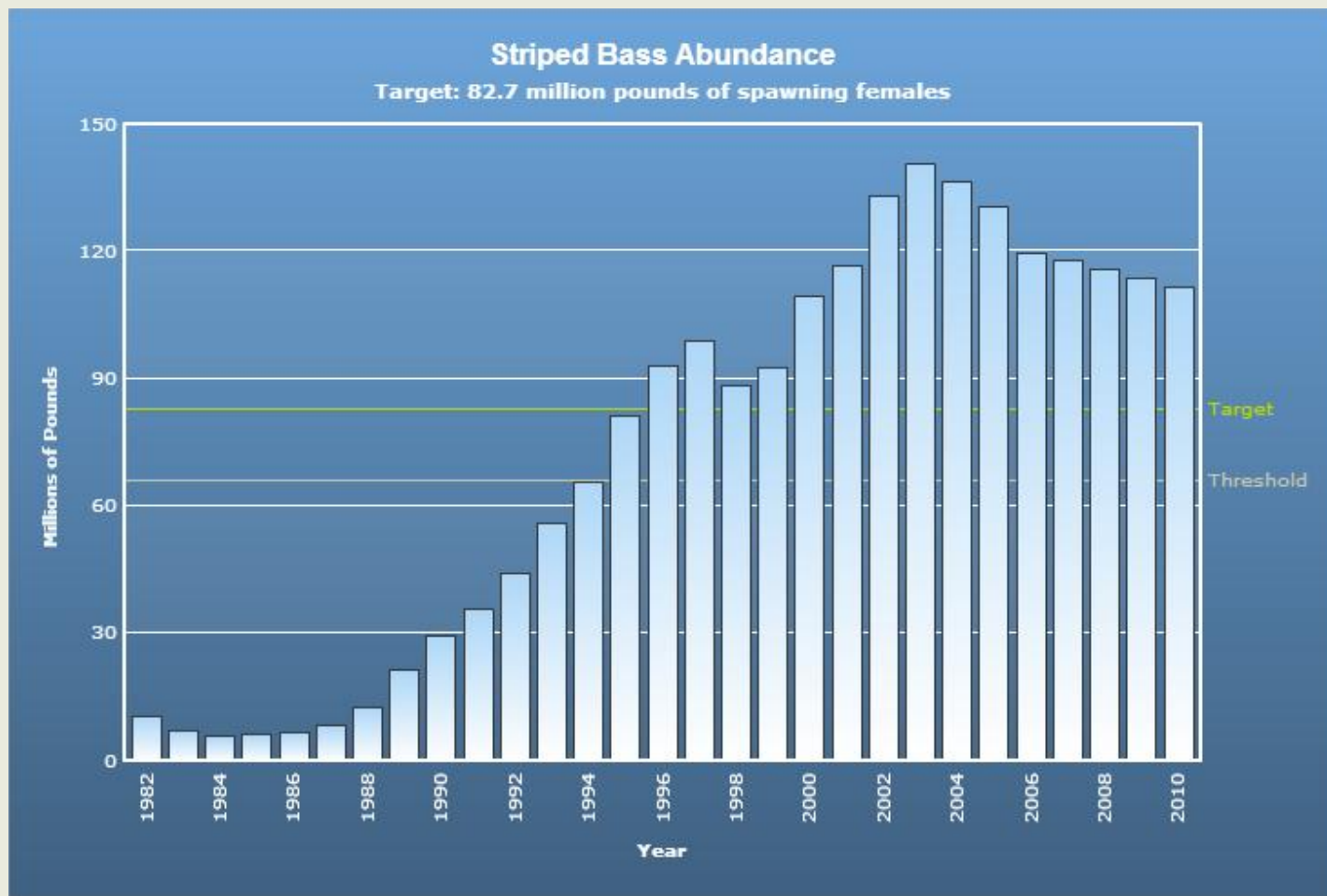
- 1. Striped Bass Abundance
  - 2. Juvenile Menhaden Abundance
  - 3. Native Oyster Abundance
  - 4. Restoring Oyster Reefs
- Bay Health
- Restoration

- Fisheries GIT Executive Committee discussed these indicators on their November 18<sup>th</sup>, 2013 call

# STRIPED BASS

- Currently:
  - ASMFC data for Coastwide Female Spawning Stock Biomass
  - ASMFC Coastwide Fishing Targets and Overfishing Thresholds
- Concerns: striped bass are managed on a coastwide basis with no Bay-specific targets

# STRIPED BASS



# STRIPED BASS

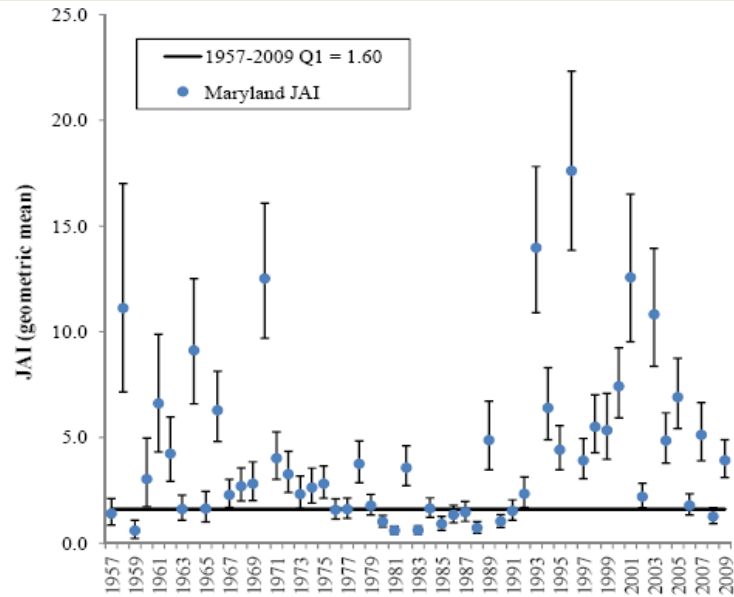


# STRIPED BASS RECOMMENDATIONS

## ■ Proposal:

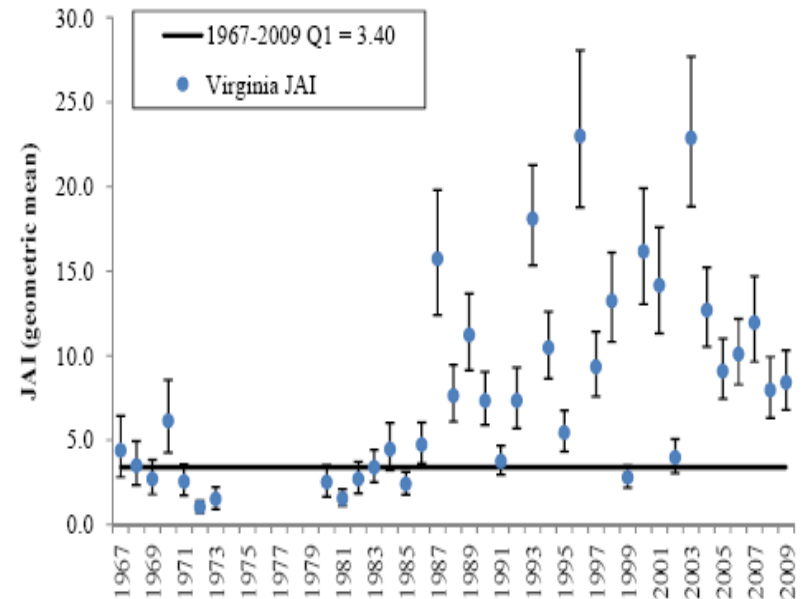
1. Maintain SSB and Management charts for the coastwide stock
2. Add MD and VA Juvenile Abundance Index charts for state-specific information
3. The Fisheries GIT will work with ASMFC and the jurisdictions to update the data when available

## Maryland Juvenile Abundance Index



Source:  
ASMFC

## Virginia Juvenile Abundance Index



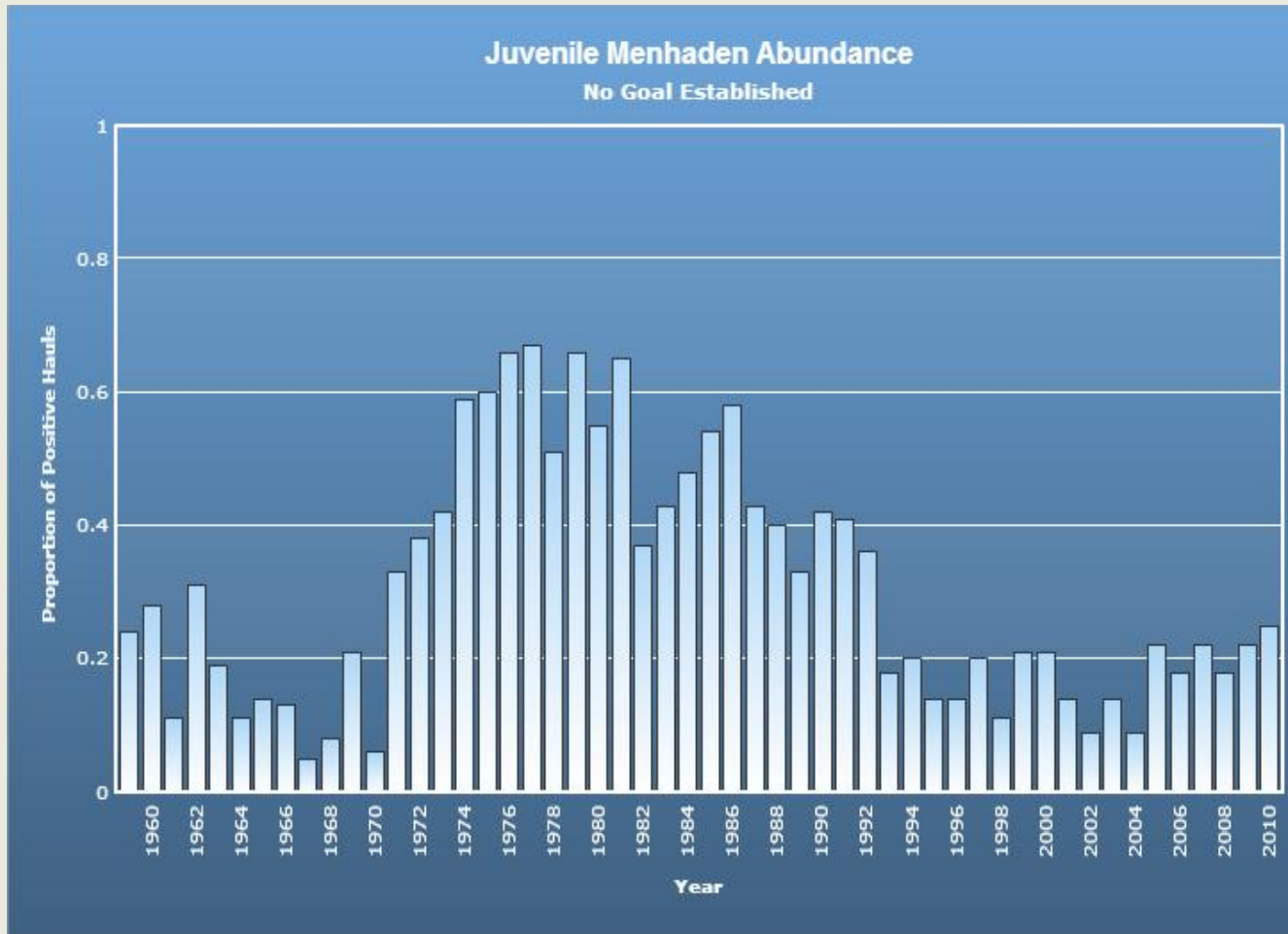
# MENHADEN

- **Currently:**
  - Juvenile abundance data for MD
- **Concerns:** Menhaden are managed on a coastwide bases with no Bay-specific targets and the website lacks of VA data



# MENHADEN

Maryland

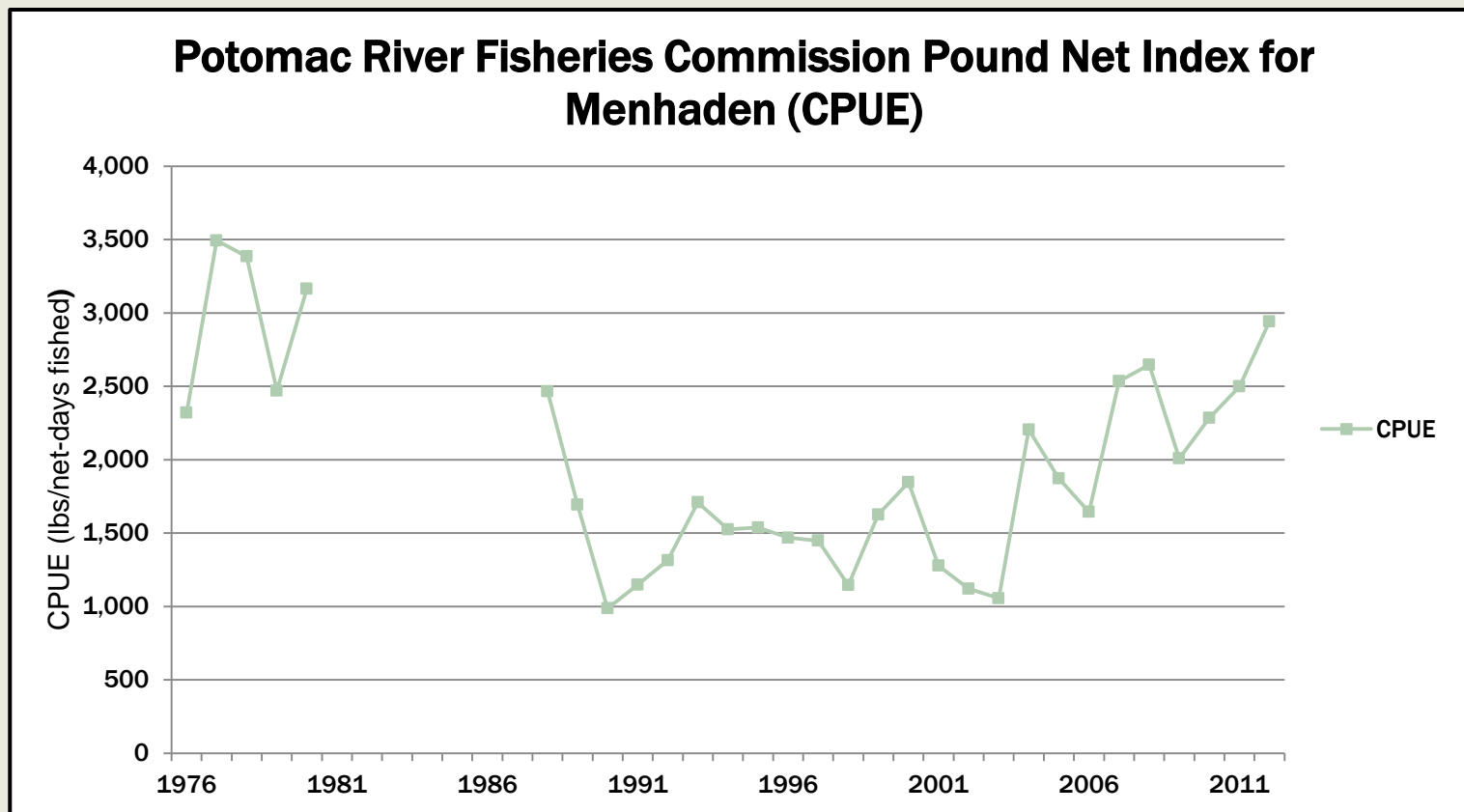


# MENHADEN

## ■ Proposal:

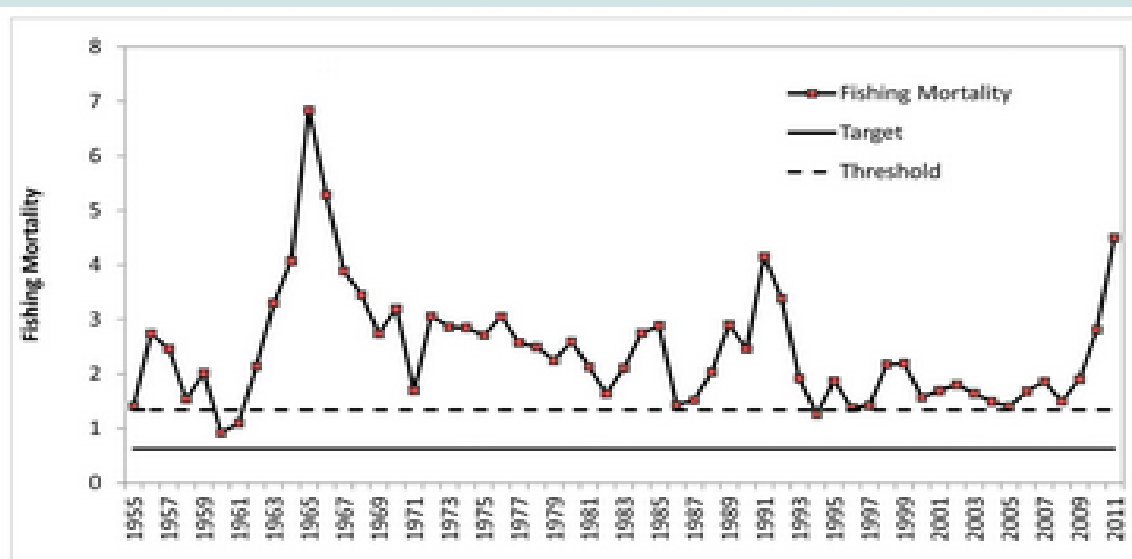
1. Remove the current MD abundance chart
2. Add Potomac River Fisheries Commission (PRFC) Pound Net Index for menhaden, which is used by ASMFC as a proxy for relative coastwide adult menhaden abundance
3. Add a management chart that shows the percentage removed by fishing, the removal target and overfishing threshold (similar to existing striped bass management chart)
4. The Fisheries GIT will work with ASMFC and PRFC to update the data when available

# MENHADEN



# MENHADEN

## Coastwide Management Chart

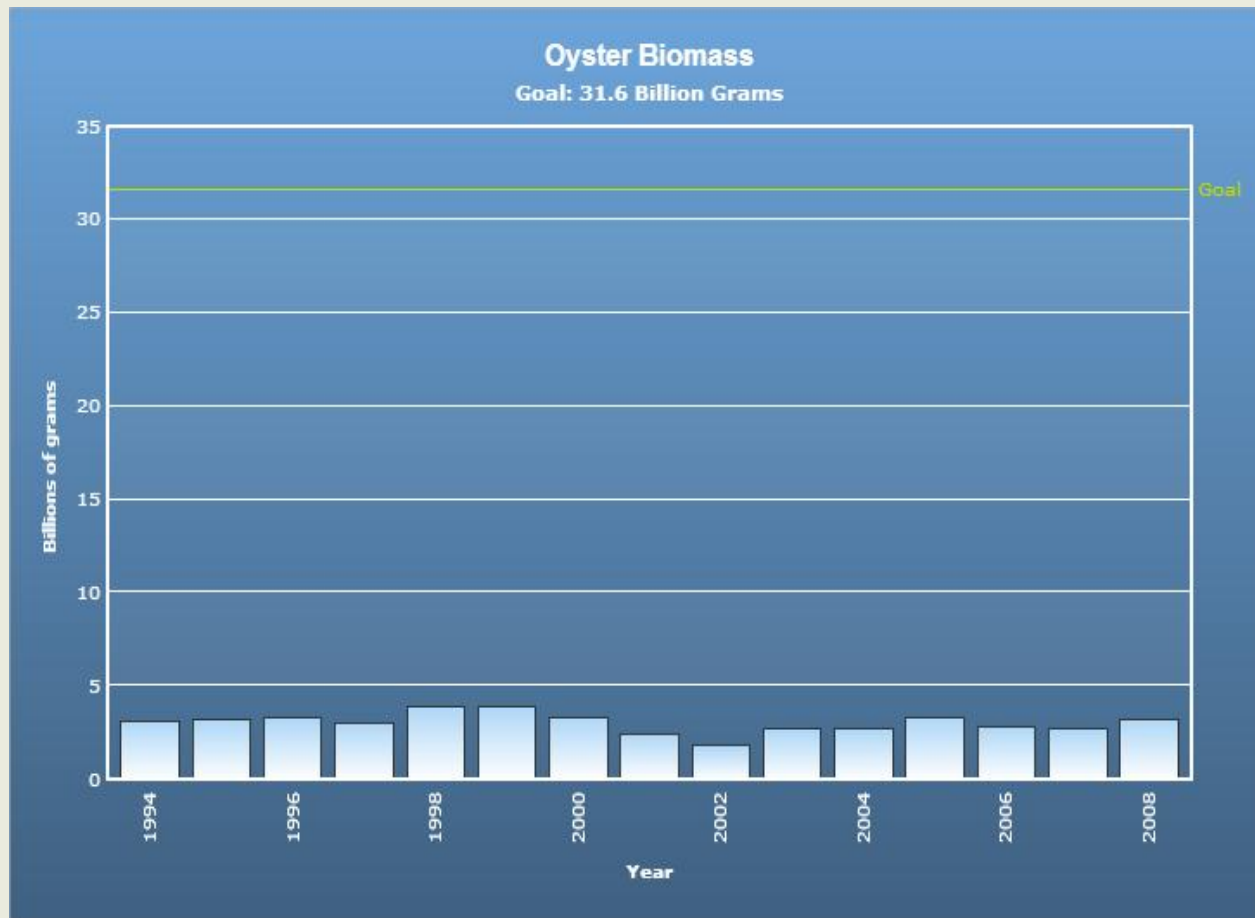


Atlantic menhaden fishing mortality (full F). Source: ASMFC Atlantic Menhaden Stock Assessment Update, 2012

# NATIVE OYSTER ABUNDANCE

- Currently:
  - Oyster Biomass Chart with outdated goal of tenfold biomass increase (Chesapeake 2000)
- Concerns: Outdated goal and baywide oyster biomass is no longer used to determine oyster health

# NATIVE OYSTER ABUNDANCE



# NATIVE OYSTER ABUNDANCE

- **Proposal:**

- Remove the current biomass chart
- The focus for oysters will be developing an oyster restoration indicator to track the tributary restoration goal
- The Fisheries GIT Ex Comm will consider developing a new oyster health indicator in the future that could incorporate data on disease or spat set data from MD and VA

# RESTORING NATIVE OYSTER REEFS

- **Currently:**
  - Restored reef acreage chart with outdated acreage goal for 2007-2010
- **Concerns:** Outdated goal and new tributary approach that will have specific plans and acreage goals for each tributary



# RESTORING NATIVE OYSTER REEFS



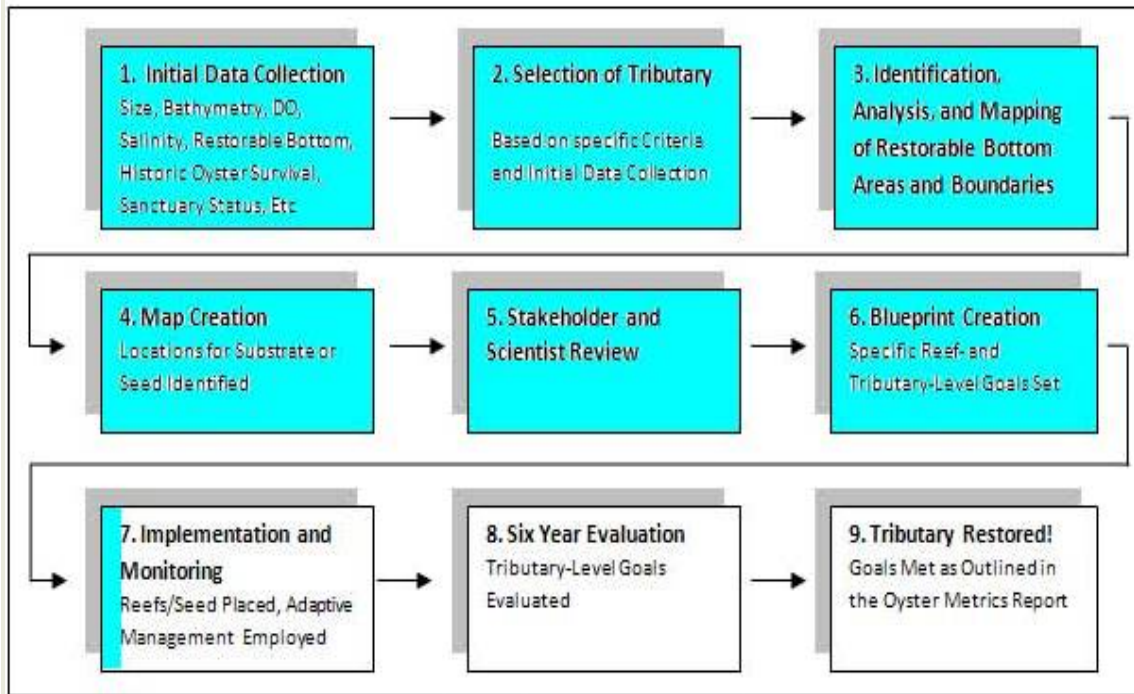
# RESTORING NATIVE OYSTER REEFS

## ■ Proposal:

- Remove the current chart
- Develop a table that shows the steps to tributary restoration (plan, implementation, evaluate) and shows the identified tributaries and their progress along these steps.
- For tributaries in the implementation phase, include acreage chart and acreage targets
- Use the text on the webpage to explain how restoration goals have changed from acreage to tributary approach.
- In the interim, use the indicator page to explain the switch to the tributary approach while the indicator is in development through 2014

# RESTORING NATIVE OYSTER REEFS

## Tributary planning steps...



Source: NOAA Chesapeake Bay Office

...to build in sample  
chart below with  
progress for each  
tributary

	Step 1	Step 2	Step 3...
Trib A			
Trib B			
Trib C			

# RESTORING NATIVE OYSTER REEFS

Tributary-specific acreage targets (sample)

