

Toxic Contaminant Outcomes and Metrics

July 8, 2015

Indicators for Policy and Prevention

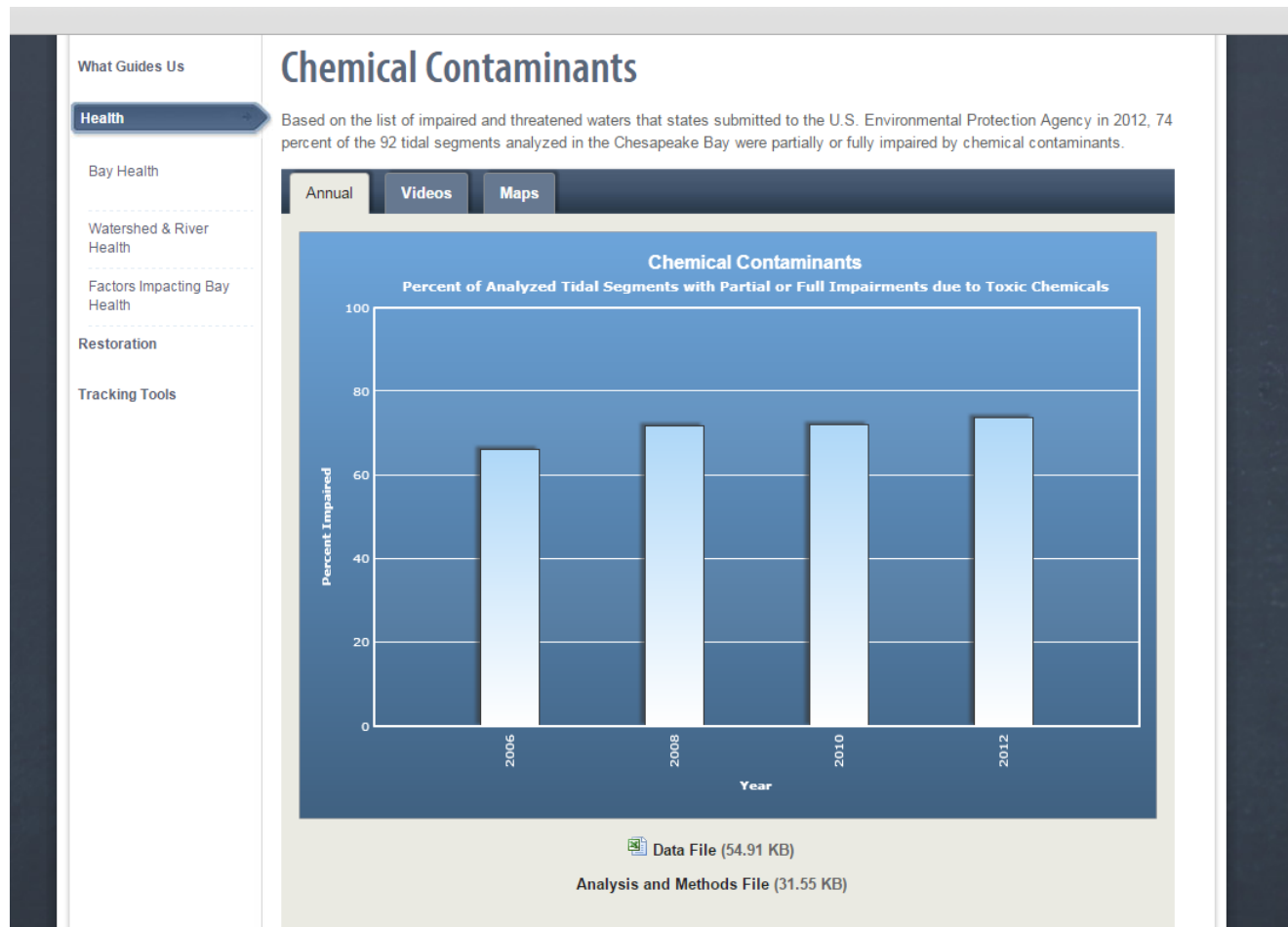
Indicators to Assess Progress Toward Outcome

- Toxic impairments (current indicator)
- Fish Tissue Concentrations for PCBs and Mercury
- Fish Advisories

Informative for Developing Strategies

- Current impairments, current TMDLs, TMDLs in the works
 - Help to identify areas of impairment that need a TMDL
- Sources and Loadings

Current Indicator – Chemical Contaminants



Can we expand to the entire watershed?

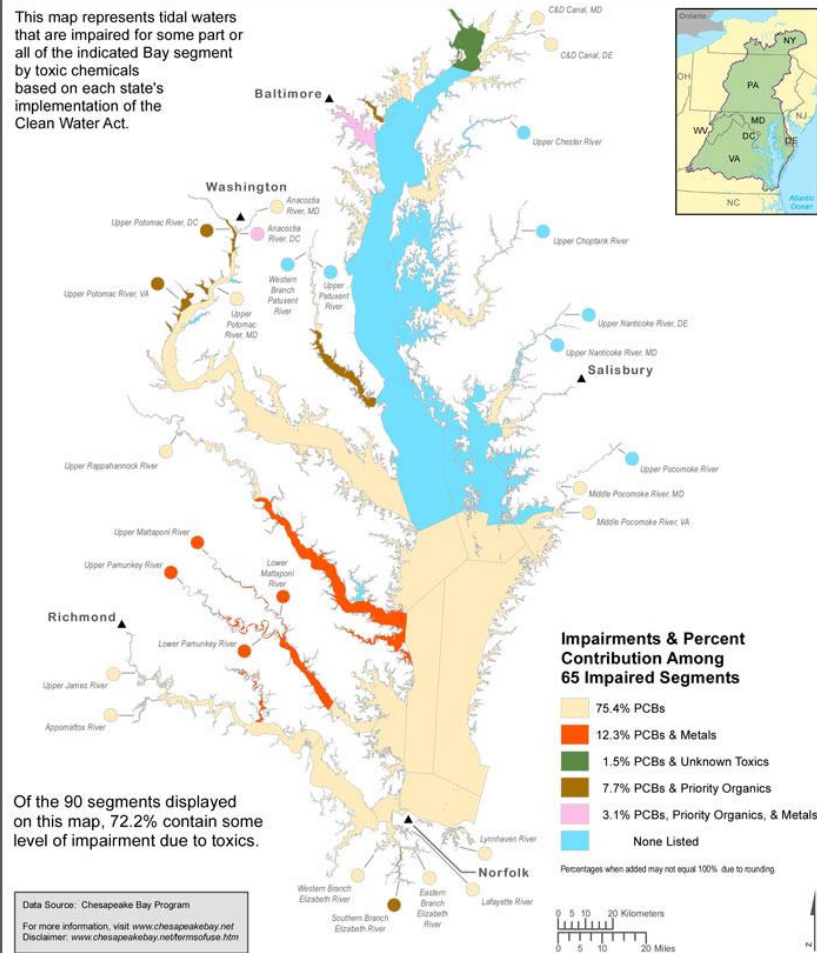
Chemical Contaminants (2010)

Impairments Illustrated Using the Chesapeake Bay Segmentation Scheme

This map represents tidal waters that are impaired for some part or all of the indicated Bay segment by toxic chemicals based on each state's implementation of the Clean Water Act.



Chesapeake Bay Program
A Watershed Partnership



UTM Zone 18N, NAD 83

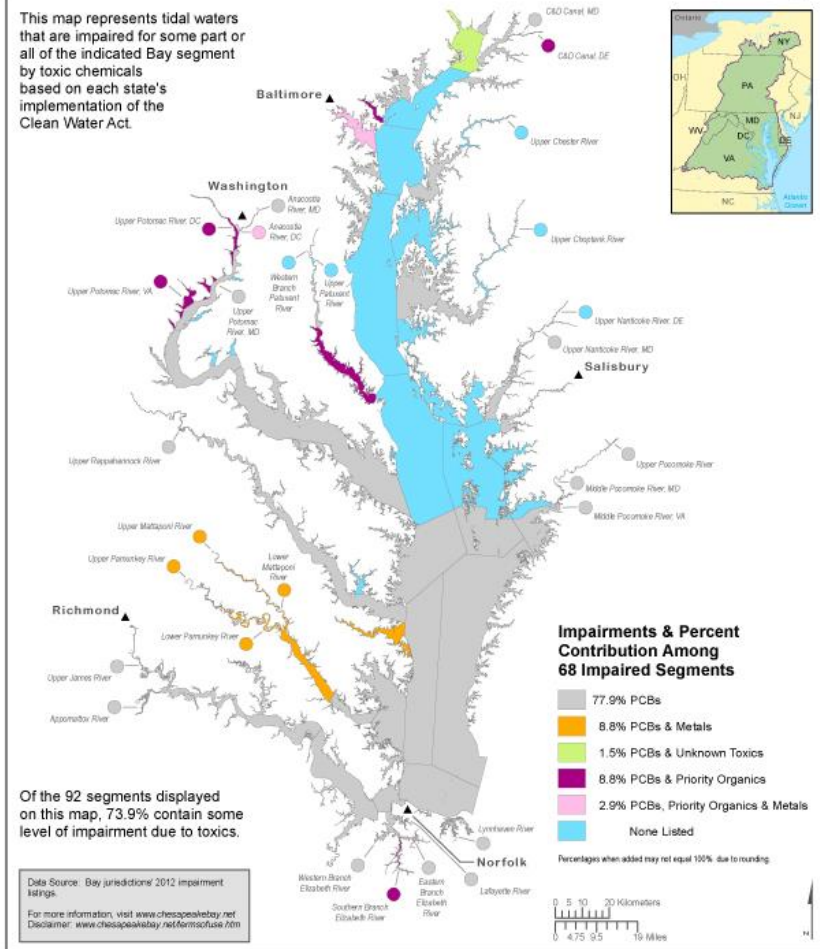
Chemical Contaminants (2012)

Impairments Illustrated Using the Chesapeake Bay Segmentation Scheme

This map represents tidal waters that are impaired for some part or all of the indicated Bay segment by toxic chemicals based on each state's implementation of the Clean Water Act.



Chesapeake Bay Program
A Watershed Partnership



UTM Zone 18N, NAD 83

Status of Metrics

Mapping Fish Advisories

- GIS team is waiting on the data
- Can we apply population demographics?

Current impairments, current TMDLs, TMDLs in the works

- GIS team has mapped current impairments and current places with TMDLs
- Mindy will be gathering information on TMDLs in the works
 - Who should be contacted?

Future Metrics

Fish Tissue Concentrations for PCBs and Mercury

- Fish species - white perch
- Trend analysis
- Mapping

Sources and Loadings of PCBs

- 1999 mass balance
 - Storm water
 - Wastewater
 - Atmospheric
 - In water sediment

Indication of Research Outcome Progress

Contaminant Groups	Occurrence	Concentrations	Sources	Effects	Uncertainty
PCBs	Small	Mid	Mid	Small	
Dioxins/Furans	Small	Mid	Small	Small	
PAHs	Small	Small	Small	Small	
Petroleum Hydrocarbons	Mid	Mid	Small	Small	
Pesticides	Large	Large	Mid	Mid	
Bio. Hormones	Large	Large	Mid	Large	
Pharms.	Large	Large	Mid	Large	
HPCP	Large	Large	Mid	Large	
PBDEs	Large	Large	Mid	Mid	
Metals	Mid	Mid	Mid	Small	
Mixtures	Large	Large	Large	Large	

Priorities for an agenda to increase certainty?

Figure 1: Level of uncertainty for ten contaminant groups with regard to the occurrence, concentrations, sources and effects on fish and wildlife.

Discussion and Follow-up

Additional Metric:

Workplan Progress— How do we show that we are doing what we said we would?

What are your thoughts on these metrics?

TMDLs in Development – TMDL and GIS contacts for each jurisdiction