

Preliminary Assessments of Shallow Water Monitoring Data
for Shallow Water vs. Open Water DO Differences

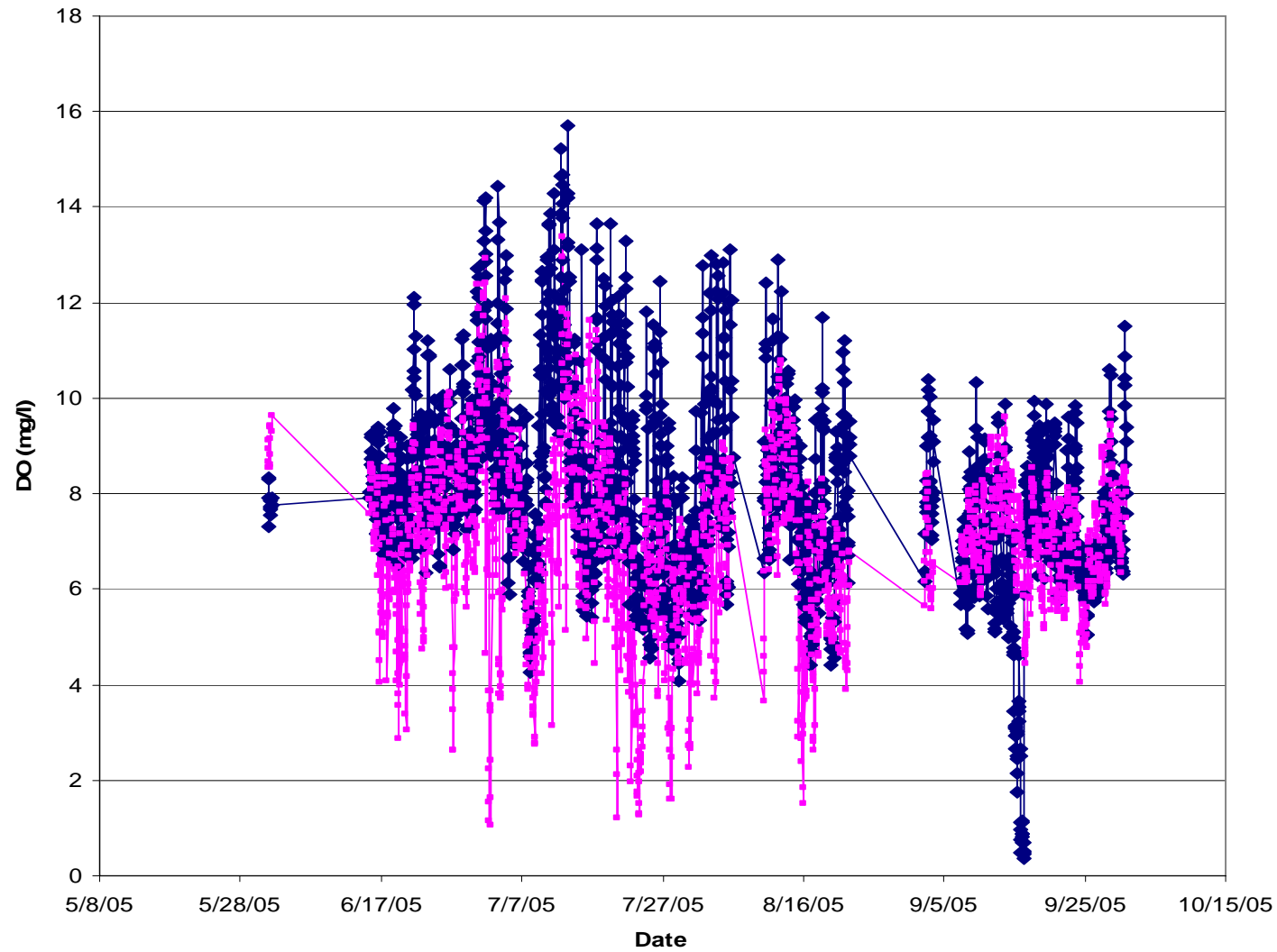
Mark Trice

Maryland DNR

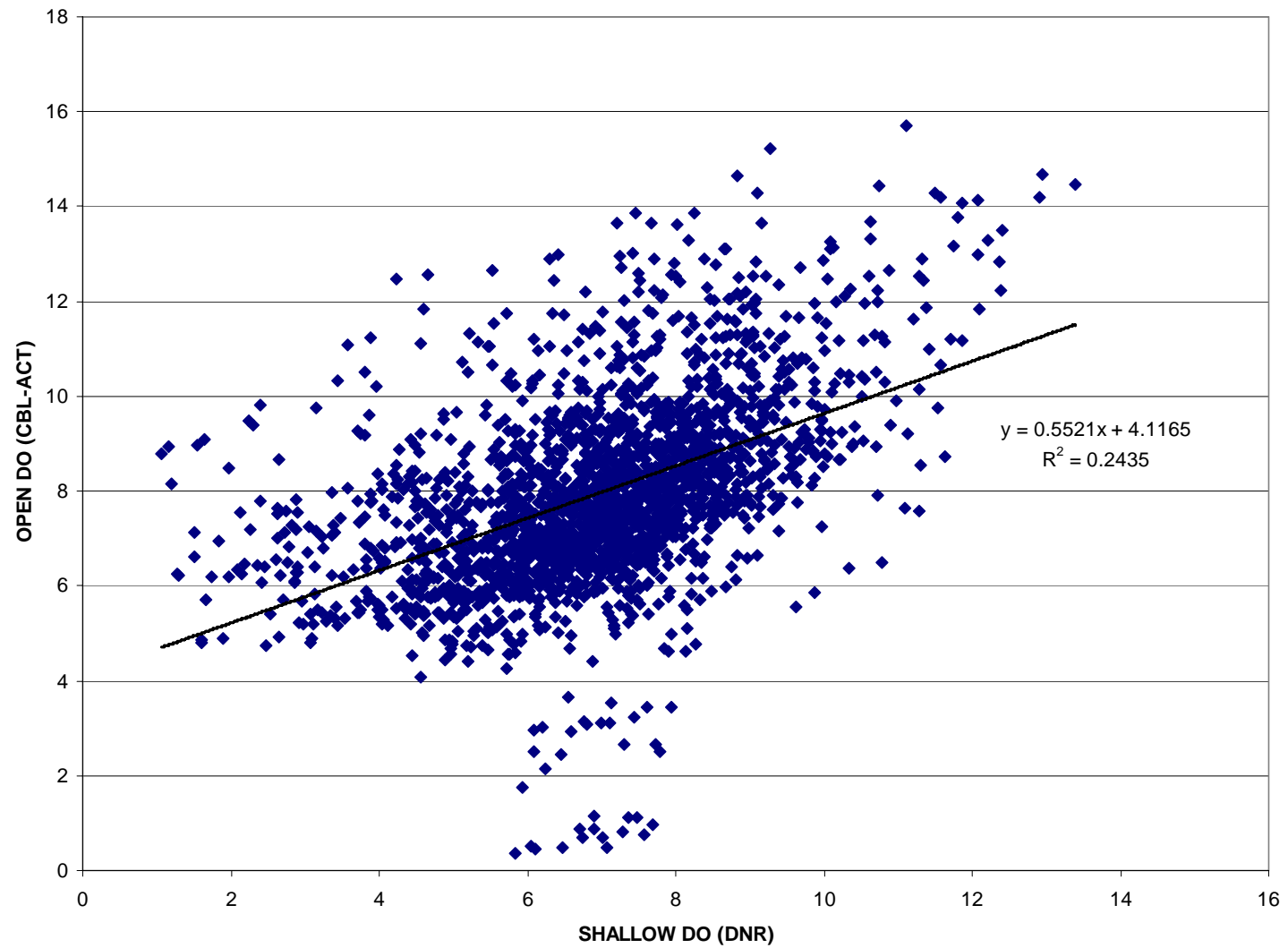
7/12/2013 – UCAT Conference Call

2005 June 1 – Sept 30

Hourly Average Comparison



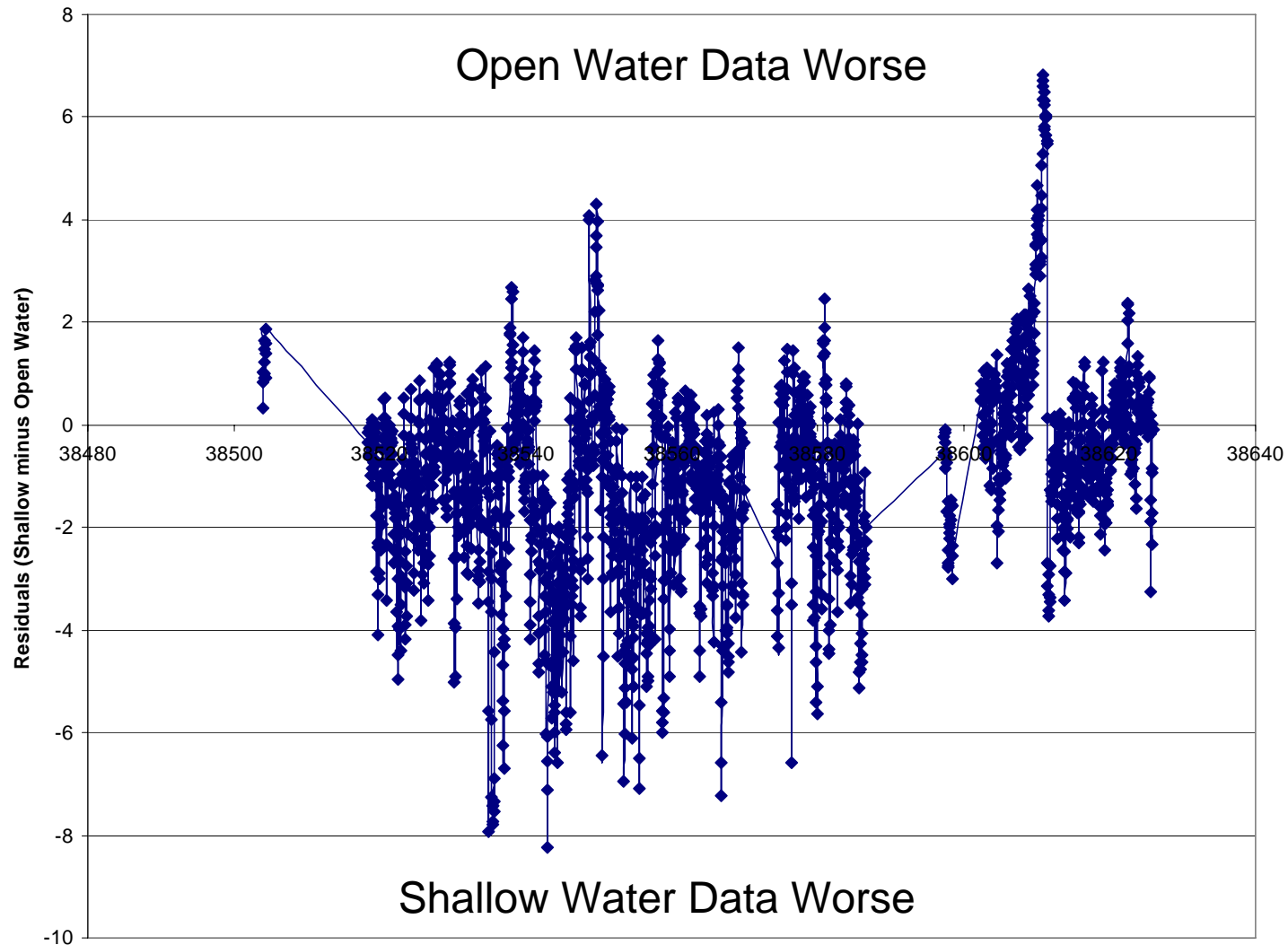
2005 June 1 – Sept 30
Hourly Average Regression



2005 June 1 – Sept 30

Hourly Average Residuals

On Average, Shallow Water is 1mg/l less, and worse a total of 39 more days



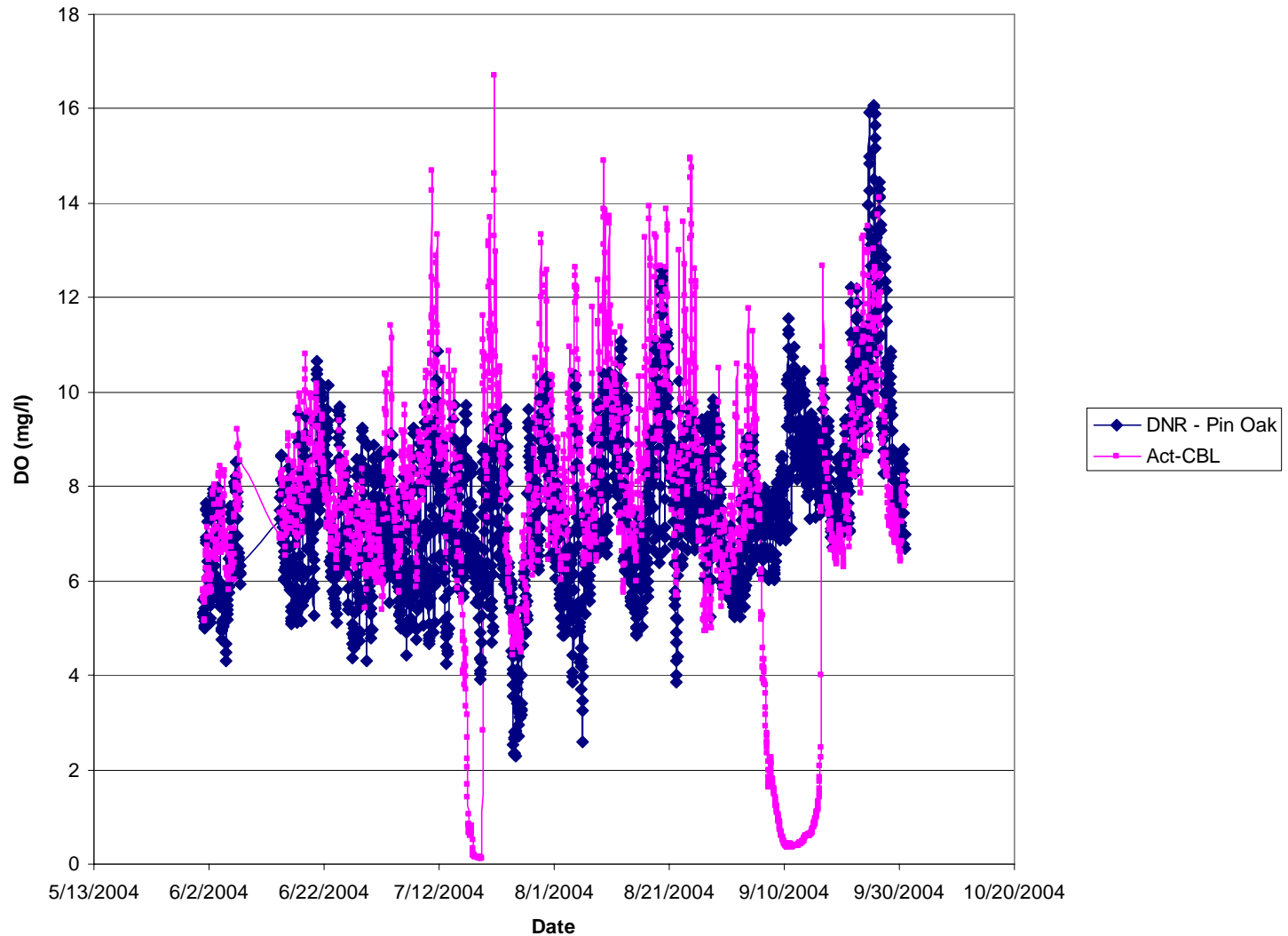
2005 June 1 – Sept 30
Criteria Failure

2005 Hourly Fails @ 3.2mg/l:
Shallow = 66 hours
Open Fails = 29 hours

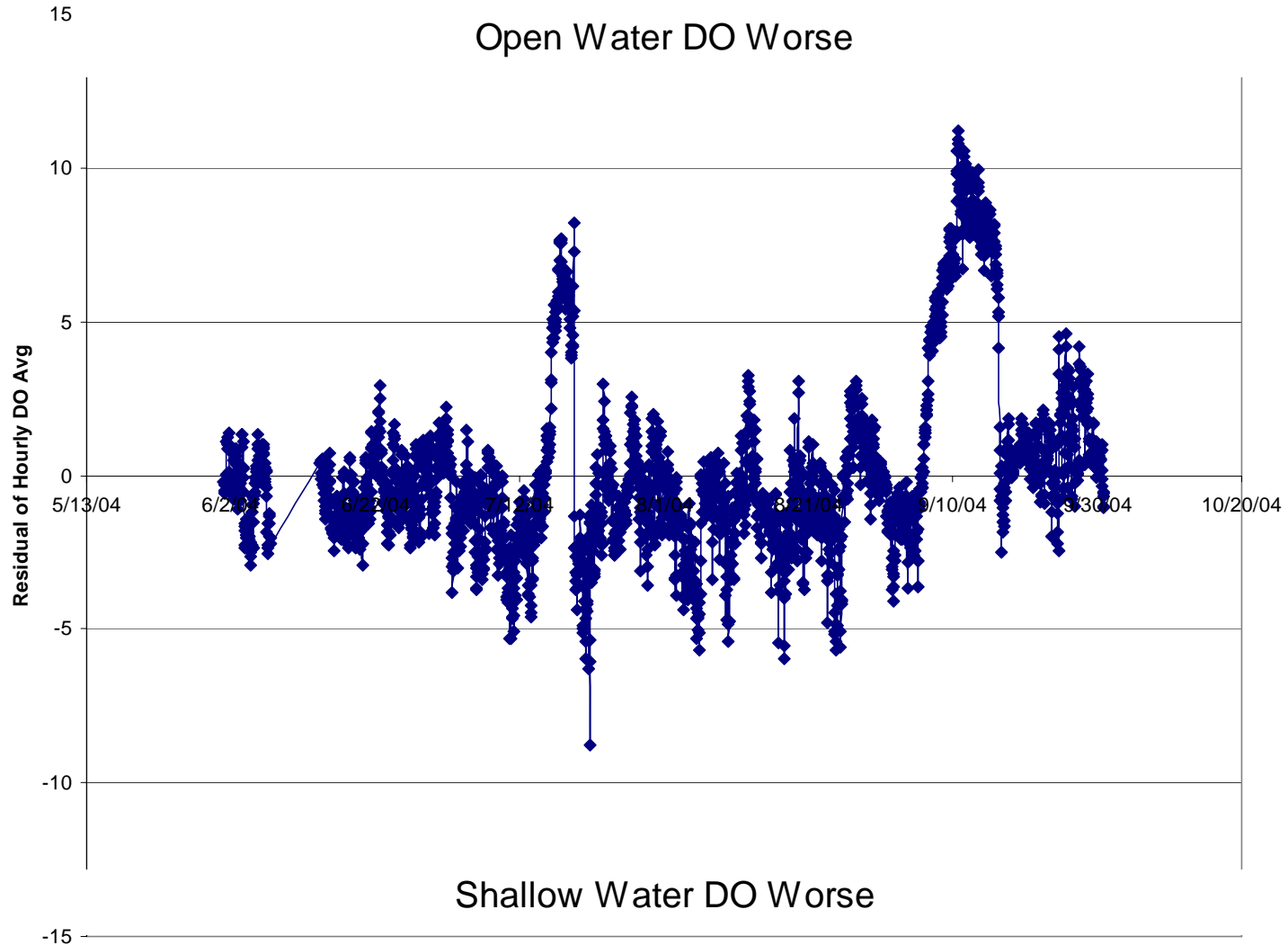
2005 Hourly Fails @ 5.0 mg/l:
Shallow = 274 hours
Open Fails = 75 hours

2004 June 1 – Sept 30

Hourly Average Comparison



2004 June 1 – Sept 30
Hourly Average Residuals
On Average, Open Water is 0.14 mg/l less, but Shallow Water
worse a total of 22 more days



Comparison of DATAFLOW open vs shallow waters
Preliminary Analysis and Thoughts.....