



E3 and NoAction Model Scenarios + Other Phase 6 Runs

Jeff Sweeney
Environmental Protection Agency
Chesapeake Bay Program Office
jsweeney@chesapeakebay.net
410-267-9844

Urban Stormwater Workgroup Meeting
June 27, 2017



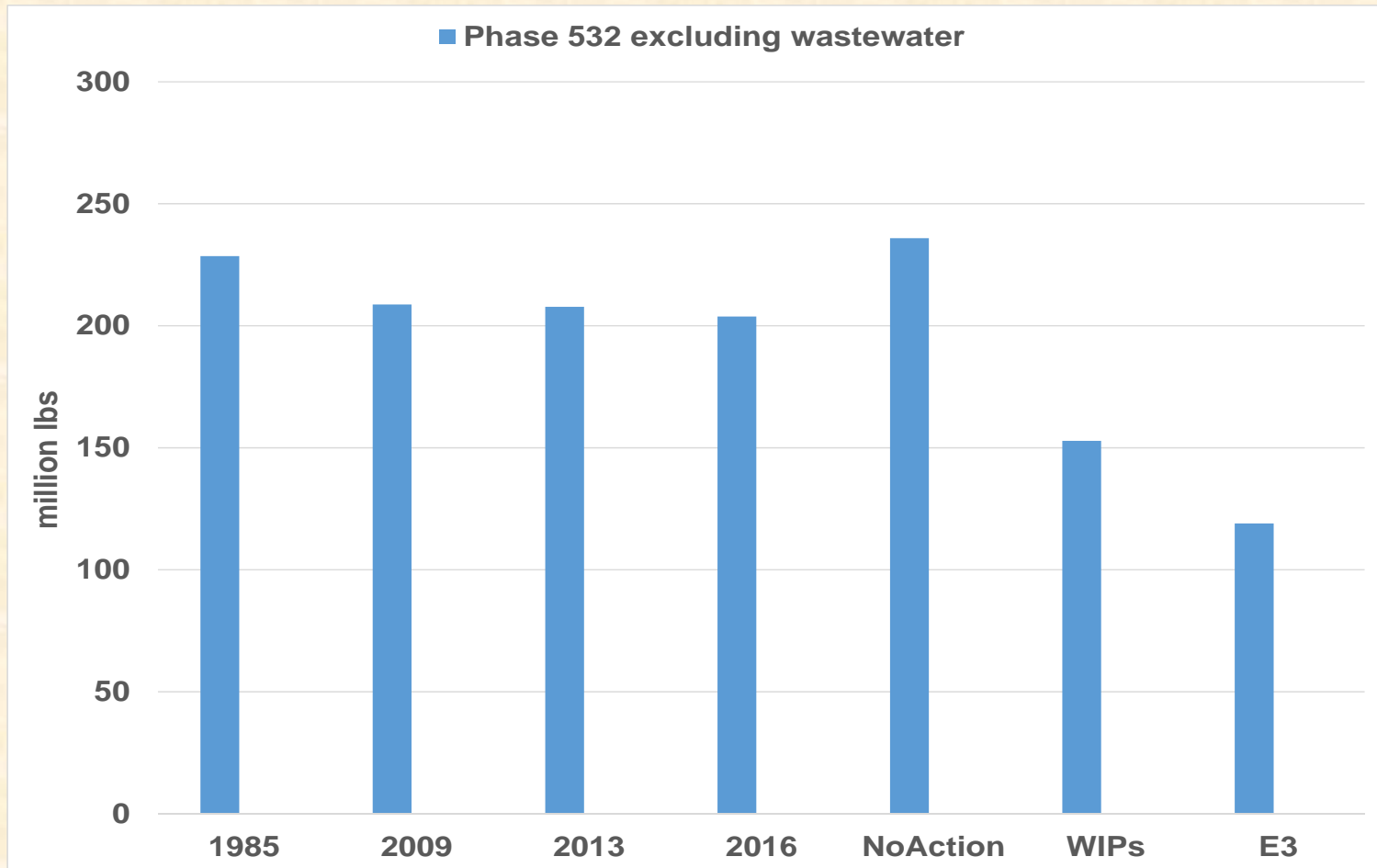
Initial Set of Phase 6 Model Scenarios

- 1985 – 2013 Progress, inclusive
 - BMP and wastewater data from jurisdictions for Phase 6 2014 Progress – 2016 Progress are due 9/1/17
- Phase II WIPs
- No-Action
- E3
 - No-Action and E3 are one component of the Planning Target calculations
 - Equity rule = Major river basins that contribute the most to the Bay water quality problems must do the most to resolve those problems (on a pound-per-pound basis)



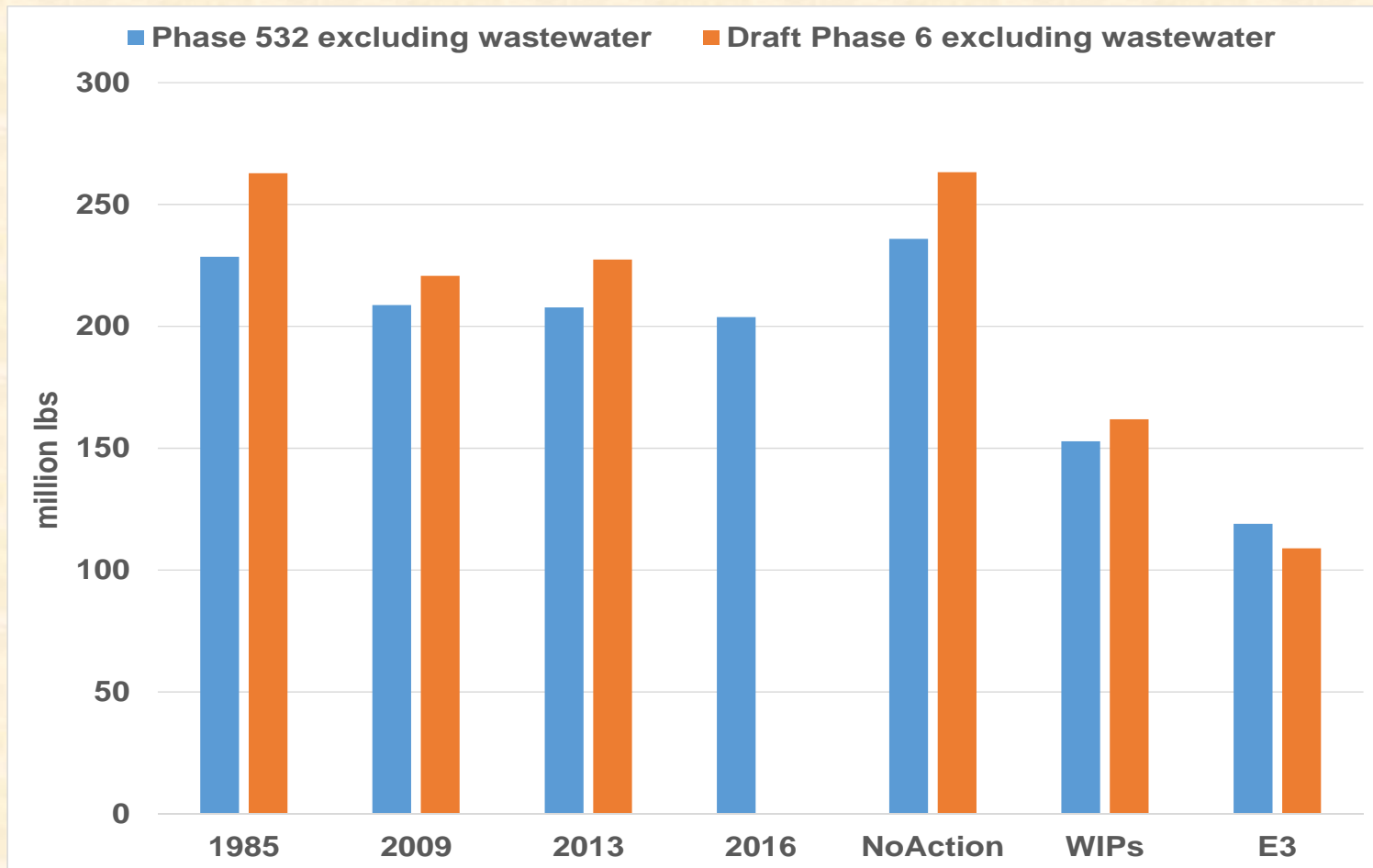
Phase 5

Nitrogen Loads, CB Watershed-wide (excludes wastewater)





Phase 5 and Phase 6 Nitrogen Loads, CB Watershed-wide (excludes wastewater)





Initial Set of Phase 6 Model Scenarios

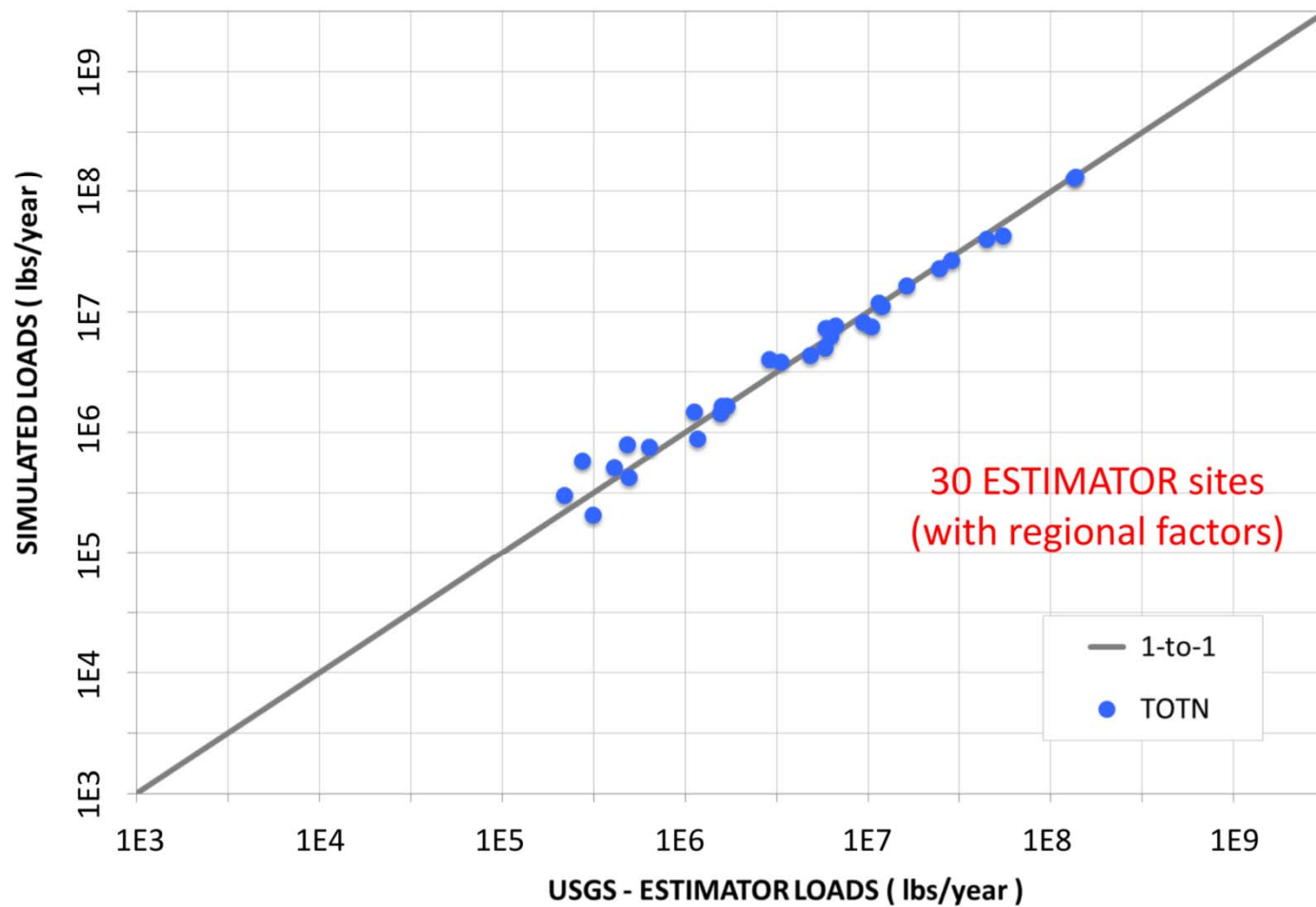
Big Changes from Phase 5 to Phase 6

- Inputs, inputs, inputs matter!
- High resolution land use
- Nitrogen simulation simplified using multiple model approach
- Phosphorus simulation tied to soil P
- Sediment simulation enhanced using NRCS RUSLE2 model
- Regional factors removed
- Calibration improved!

PHASE 5

Phase 5.3.2

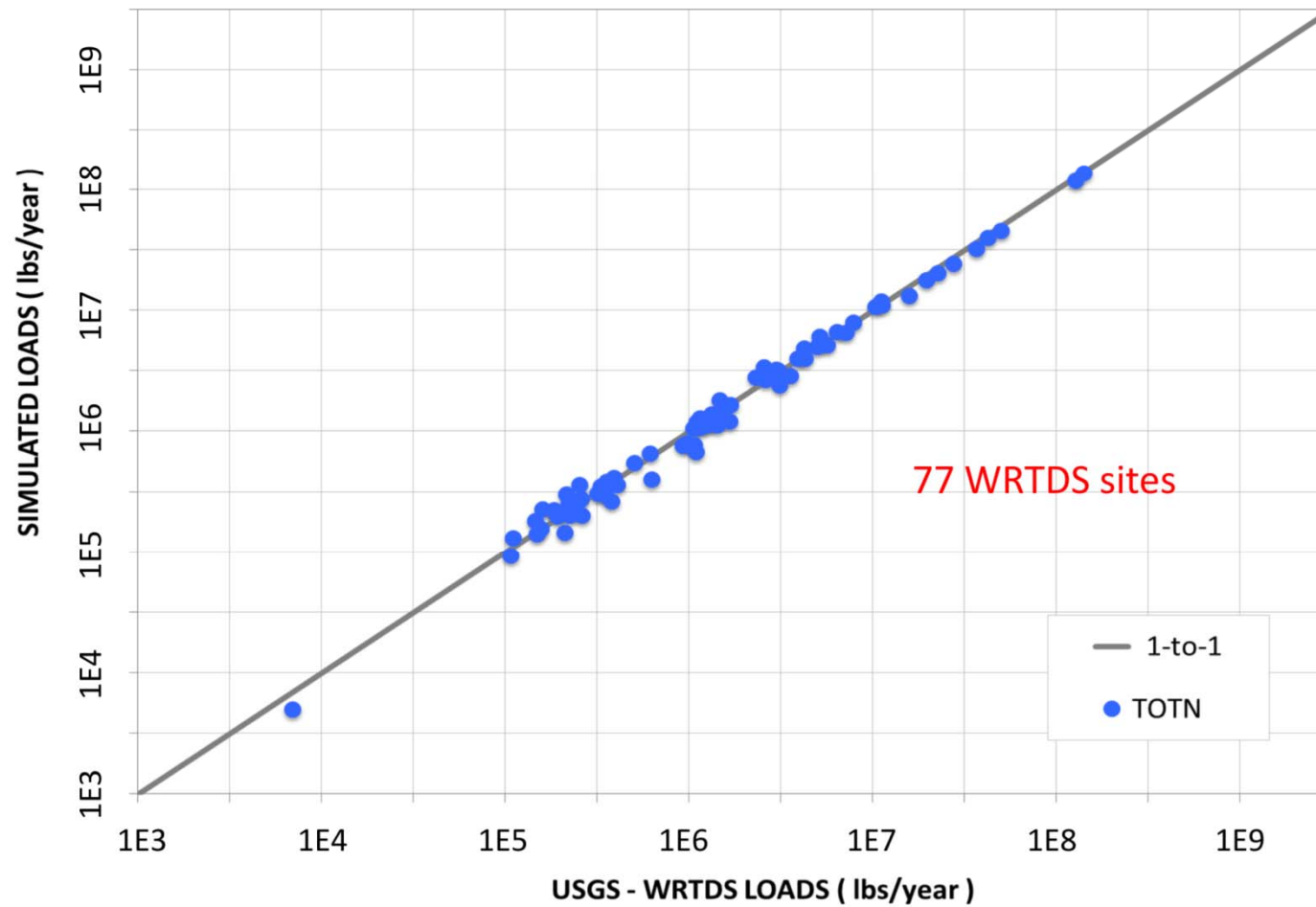
NITROGEN



DRAFT G

*Revised inputs, model refinements,
and calibration methods*

NITROGEN





Initial Set of Phase 6 Model Scenarios

Big Changes from Phase 5 to Phase 6

- **Inputs, inputs, inputs matter!**
- High resolution land use
- Nitrogen simulation simplified using multiple model approach
- Phosphorus simulation tied to soil P
- Sediment simulation enhanced using NRCS RUSLE2 model
- Regional factors removed
- Calibration improved!

Phase 5

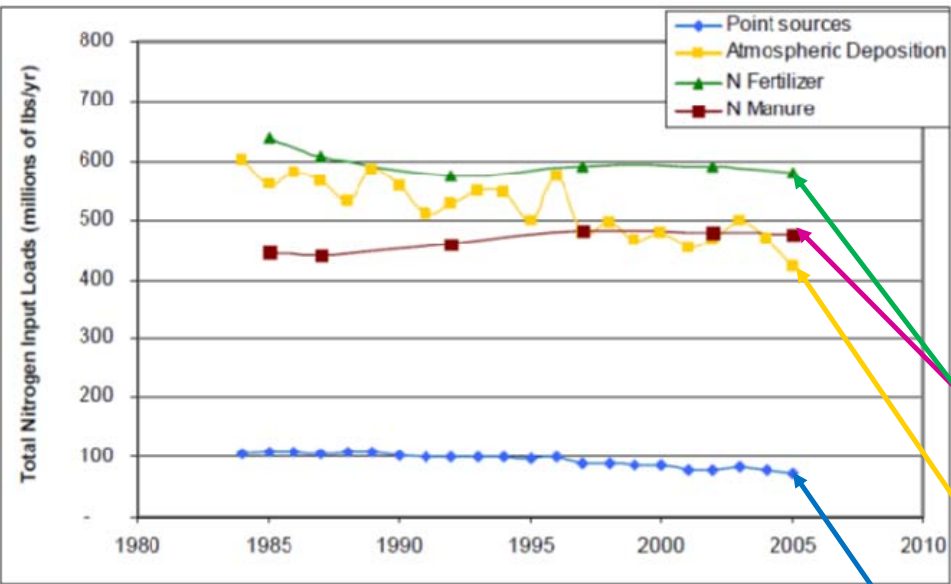
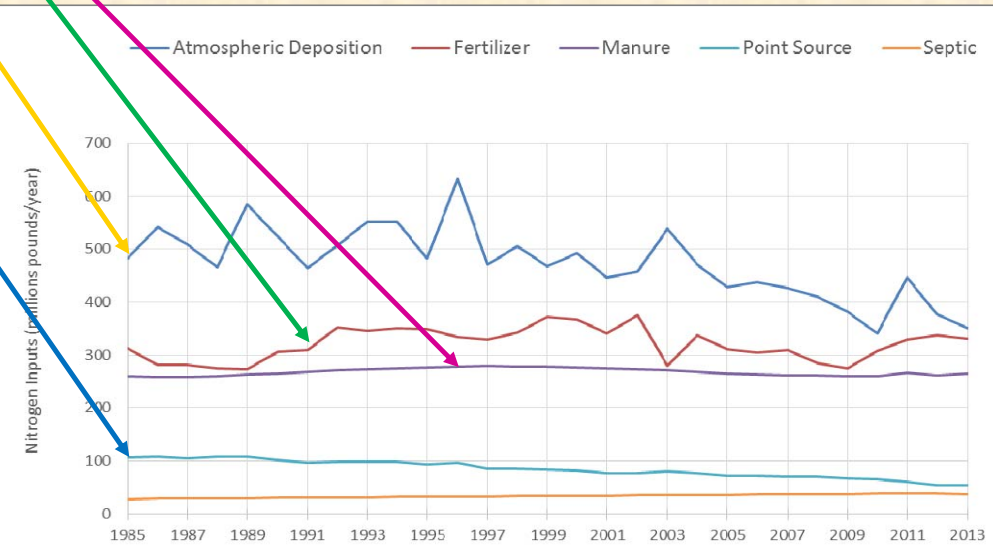


Figure 5-1. Time series of atmospheric, fertilizer, manure, and point source total nitrogen input loads to the Chesapeake Bay Watershed Model (Phase 5.3 calibration).

Phase 6

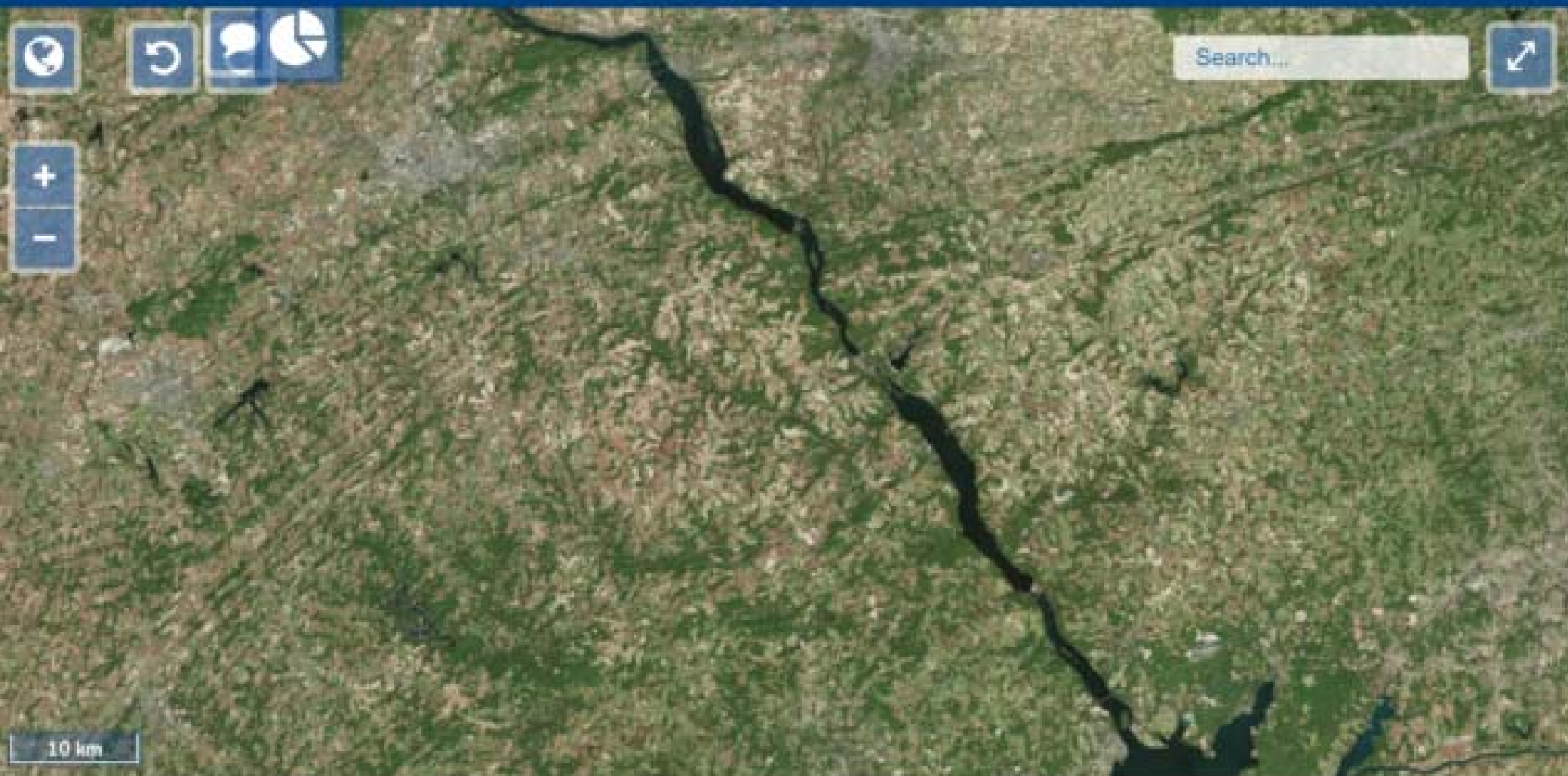




Initial Set of Phase 6 Model Scenarios

Big Changes from Phase 5 to Phase 6

- Inputs, inputs, inputs matter!
- **High resolution land use**
- Nitrogen simulation simplified using multiple model approach
- Phosphorus simulation tied to soil P
- Sediment simulation enhanced using NRCS RUSLE2 model
- Regional factors removed
- Calibration improved!



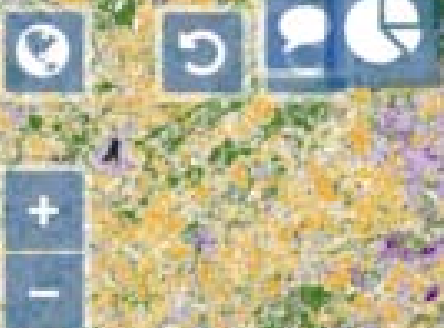
Search...

10 km

Overlay Opacity: 0%



Search...



30 km

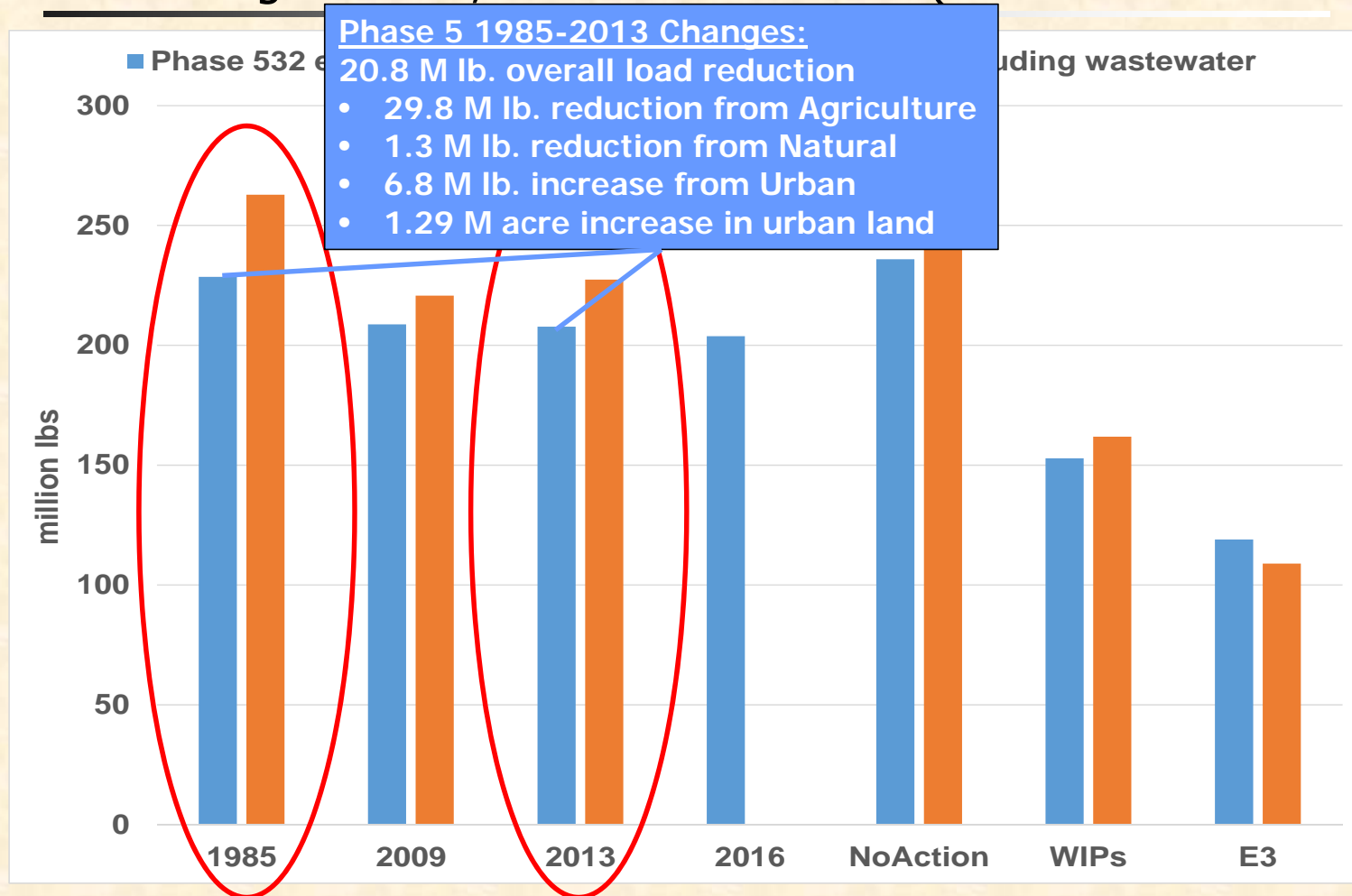
Overlay Opacity: 100%



12

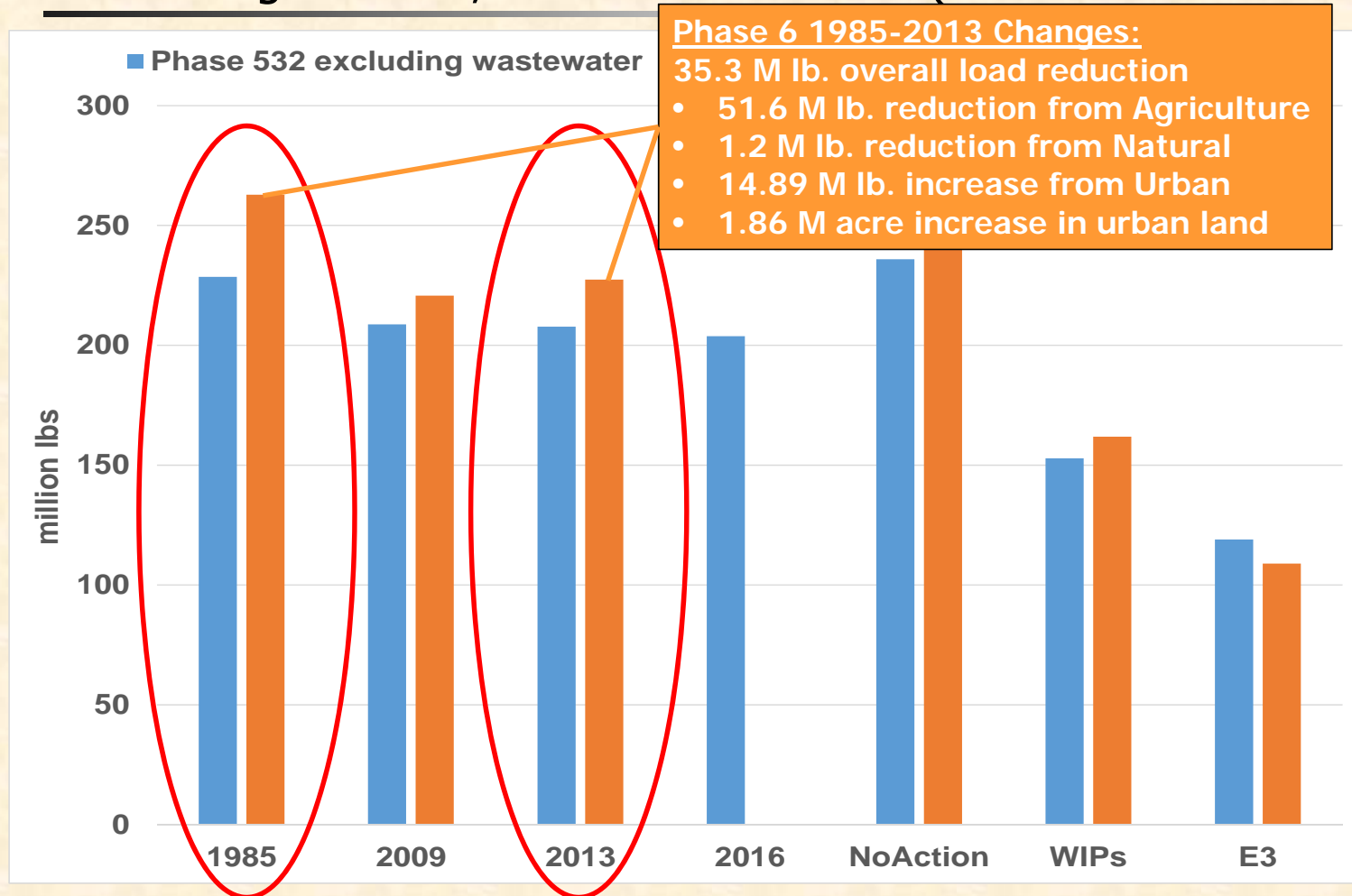


Phase 5 and Phase 6 Nitrogen Loads, CB Watershed-wide (excludes wastewater)



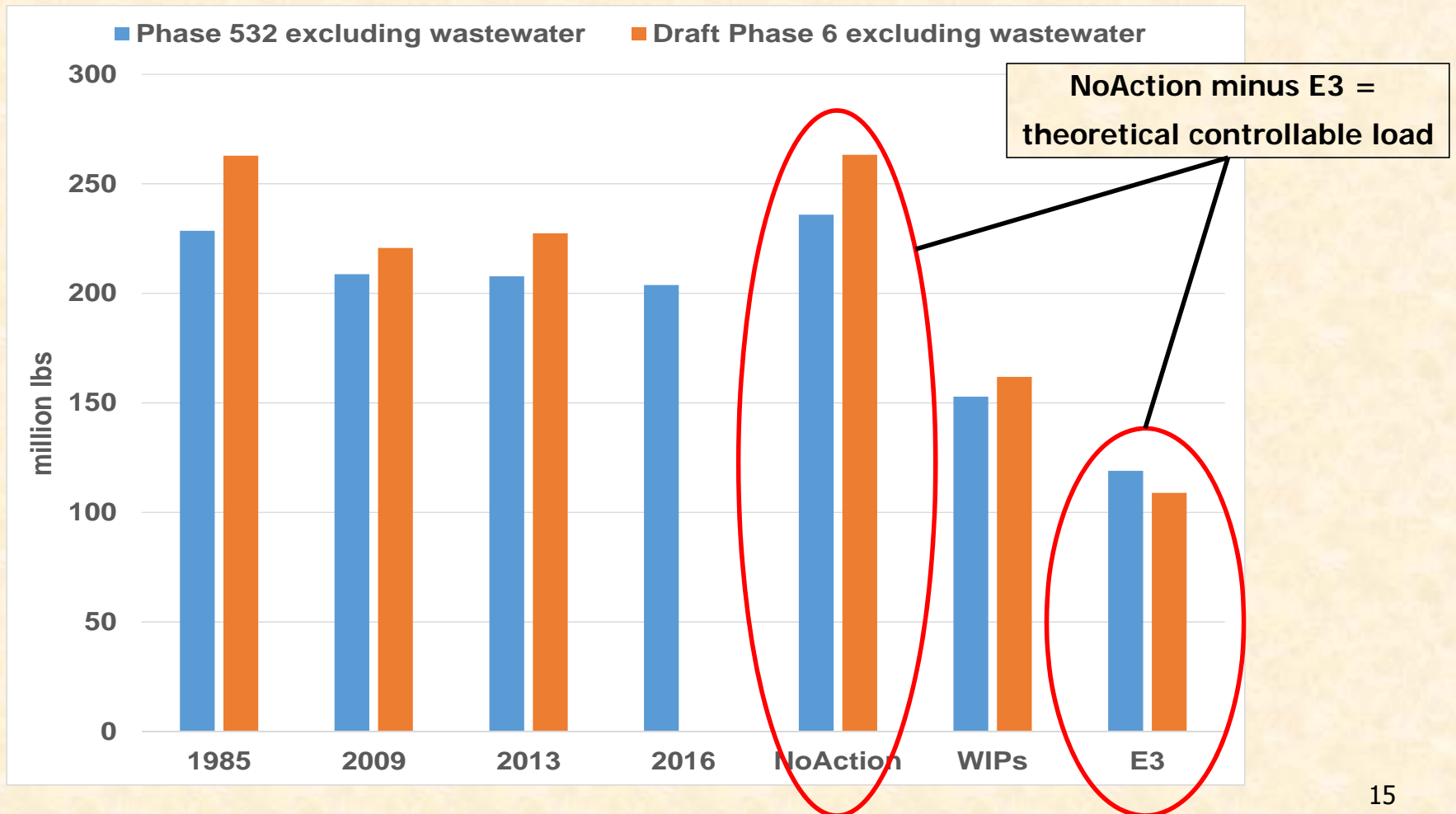


Phase 5 and Phase 6 Nitrogen Loads, CB Watershed-wide (excludes wastewater)

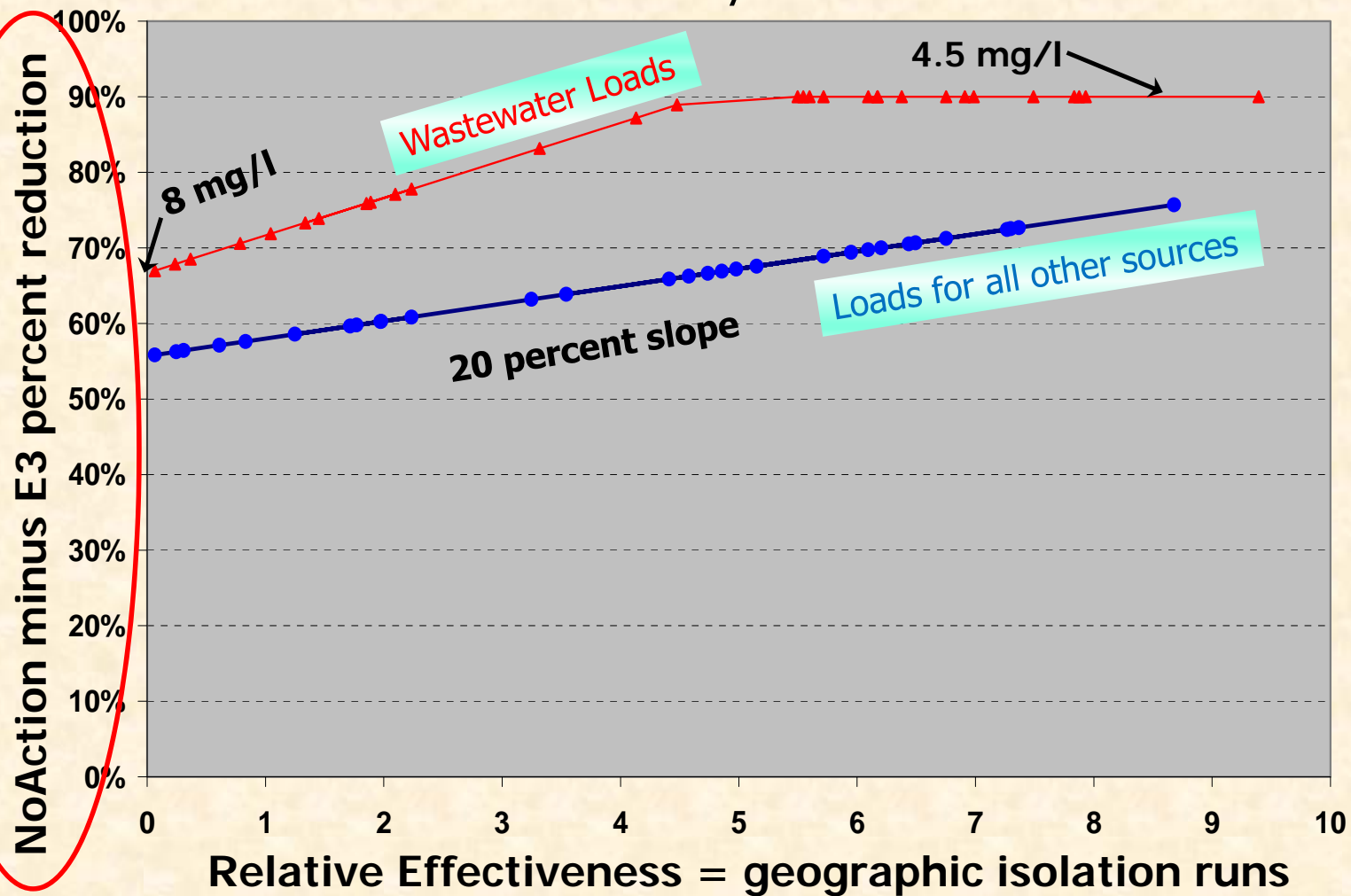




Phase 5 and Phase 6 Nitrogen Loads, CB Watershed-wide (excludes wastewater)



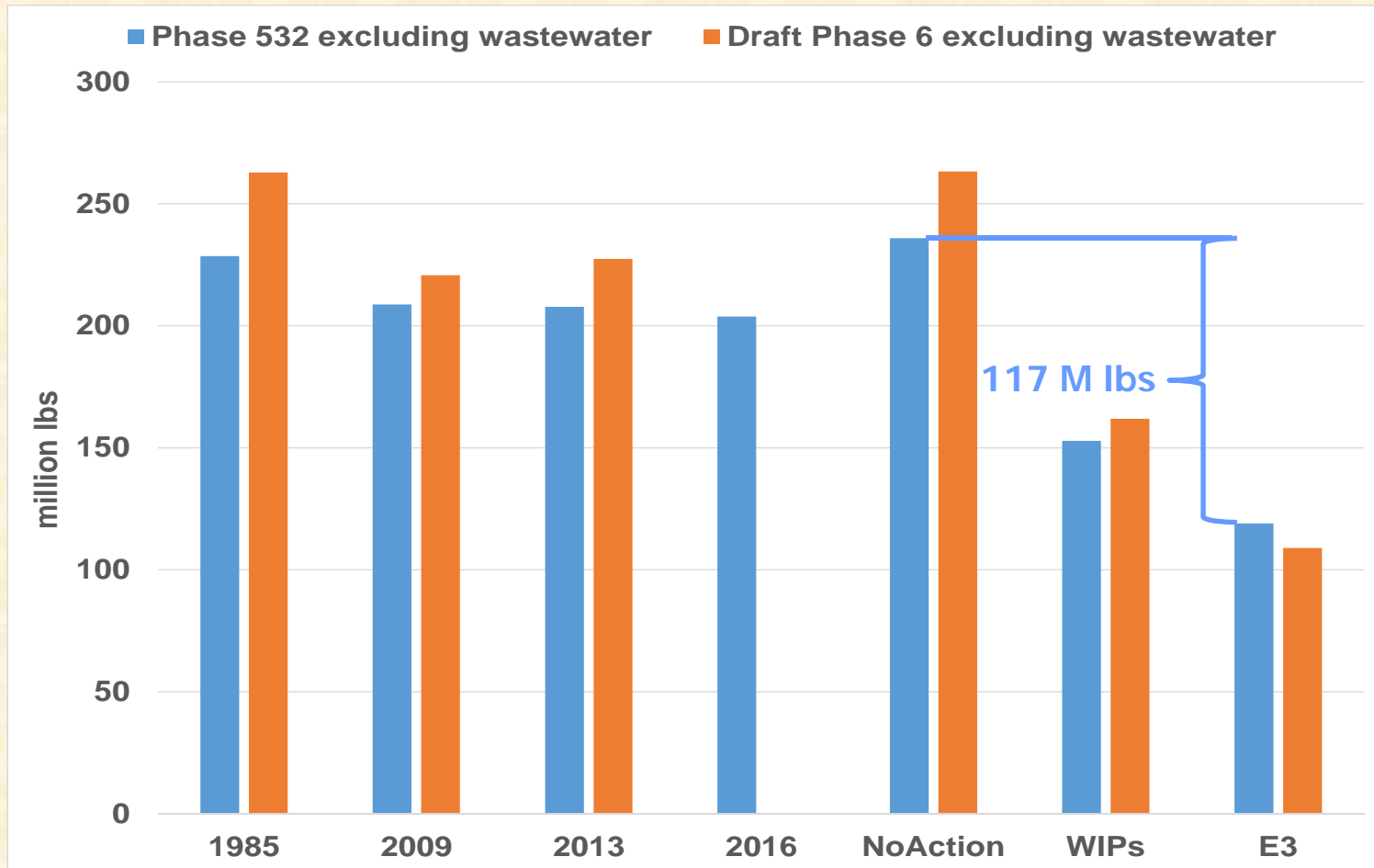
Phase 5 Planning Target Methodology "Hockey Stick"





Initial Set of Phase 6 Model Scenarios

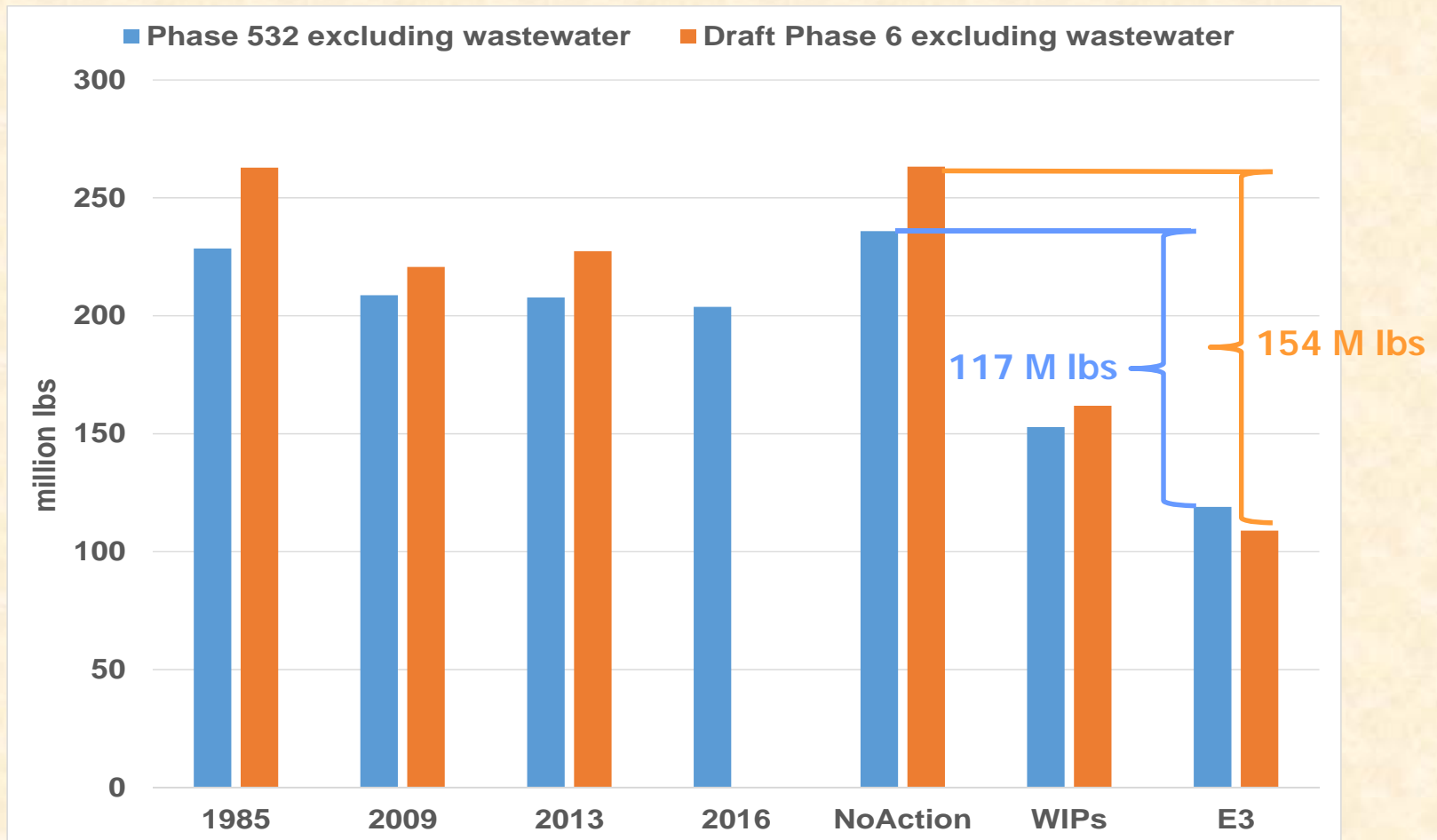
Nitrogen Loads, CB Watershed-wide (excludes wastewater)





Initial Set of Phase 6 Model Scenarios

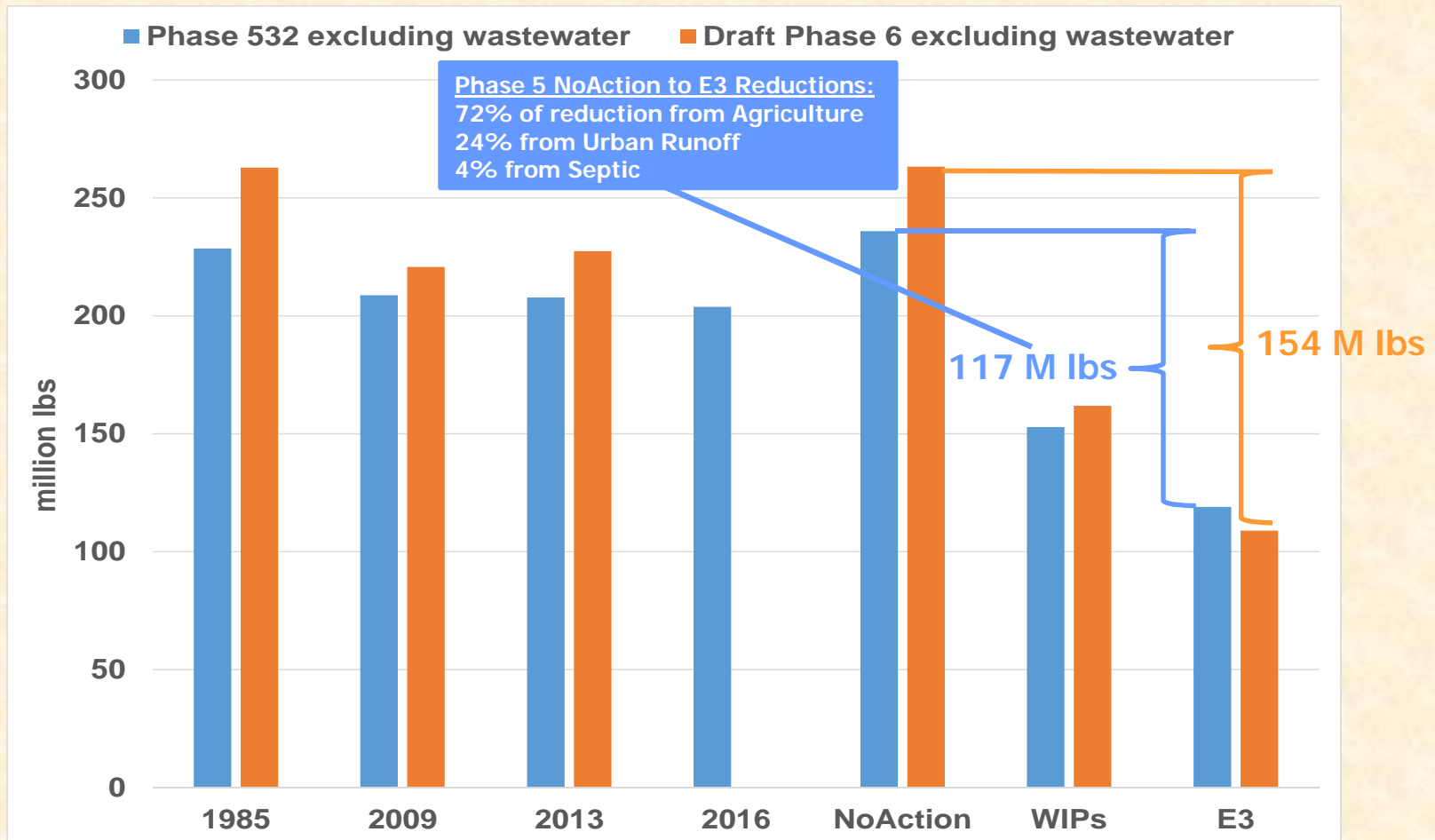
Nitrogen Loads, CB Watershed-wide (excludes wastewater)





Initial Set of Phase 6 Model Scenarios

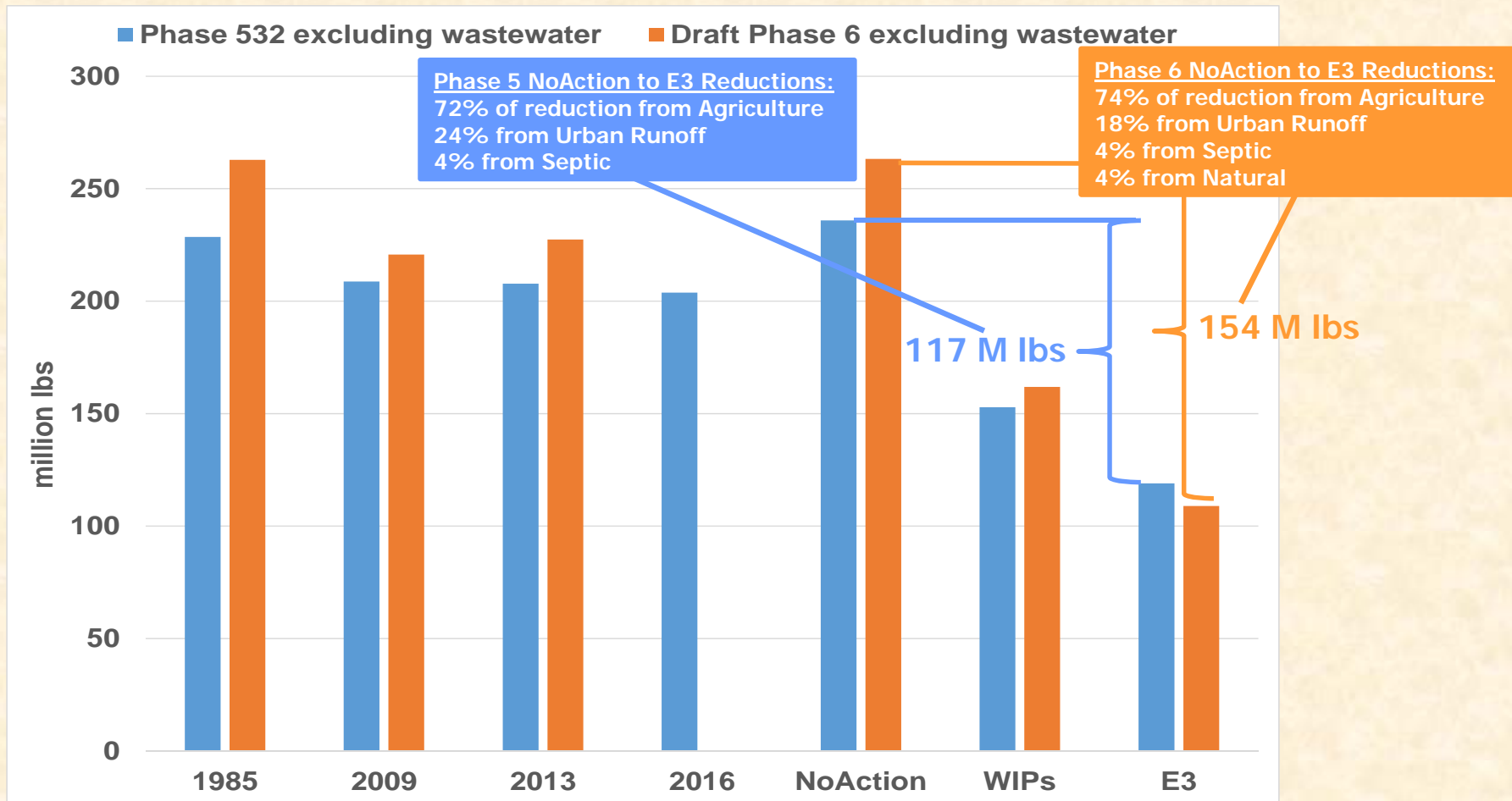
Nitrogen Loads, CB Watershed-wide (excludes wastewater)





Initial Set of Phase 6 Model Scenarios

Nitrogen Loads, CB Watershed-wide (excludes wastewater)

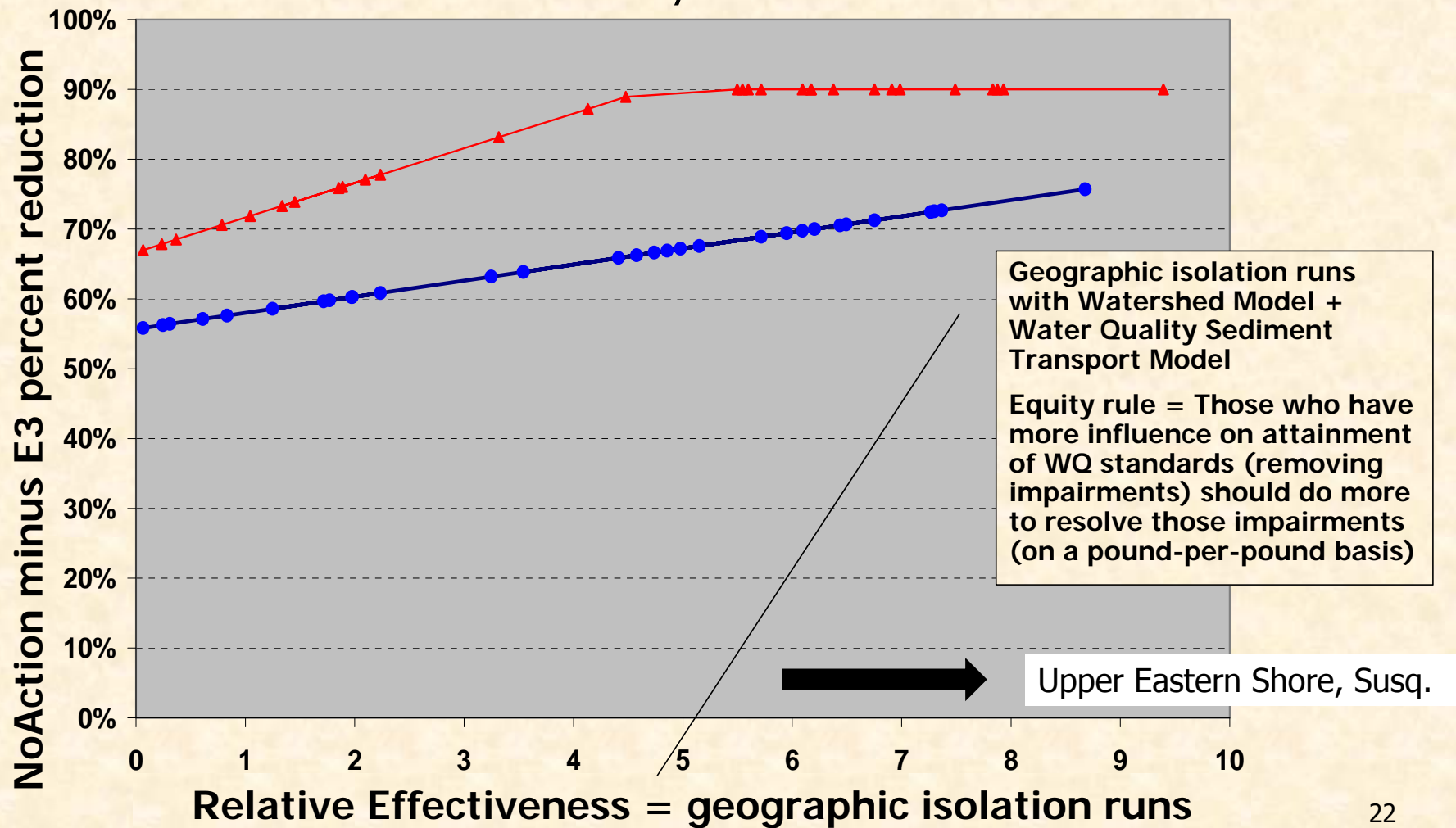




Phase 6 E3 Scenario Urban and Resource BMPs

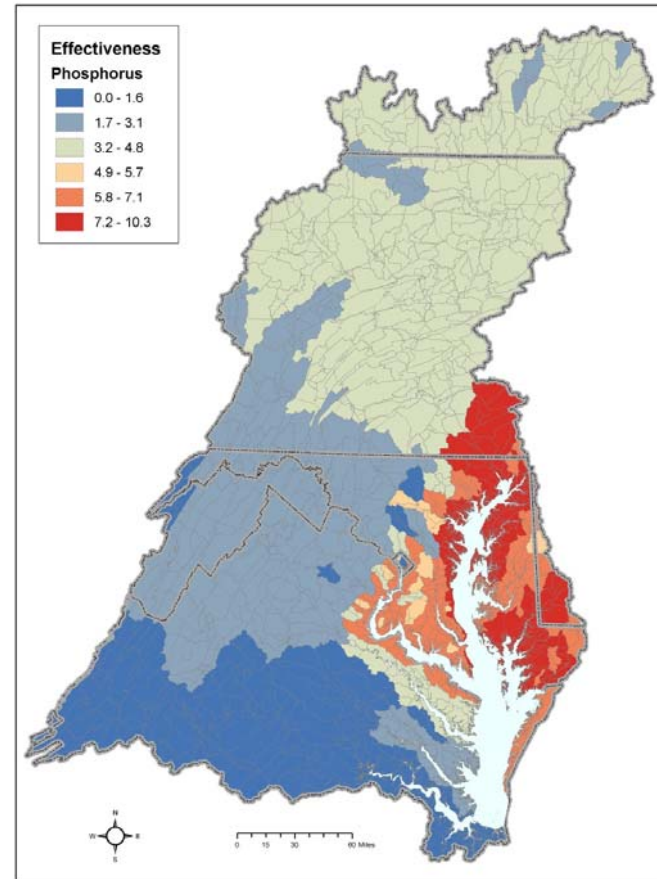
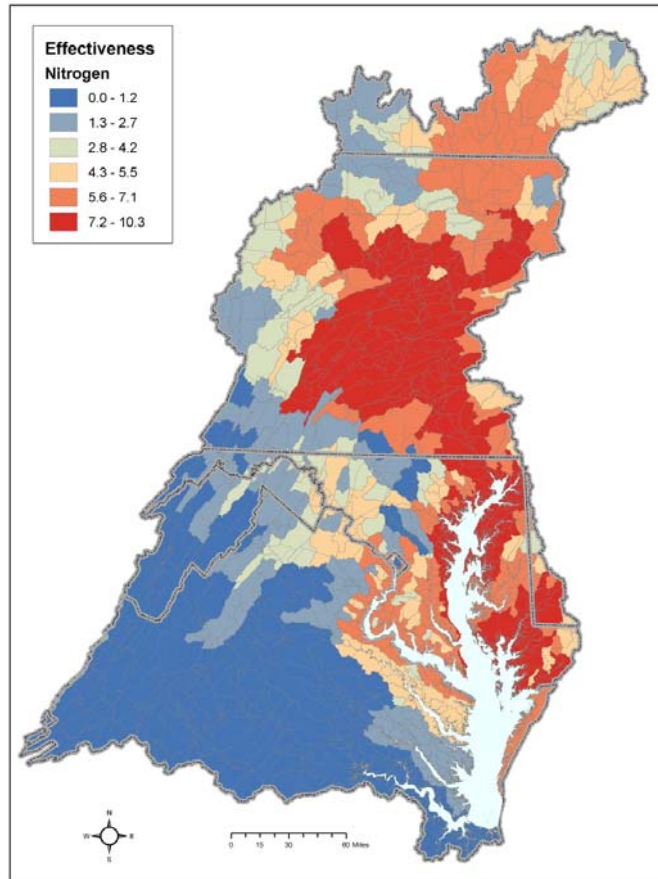
Phase 6 BMP	Implementation Level
Stormwater Management - New Development	All new development has Runoff Reduction BMPs sized for 1.5 inch IA
Stormwater Management - Retrofits	Runoff Reduction Retrofits sized to treat 1.0 inch IA for 75% of each each urban land use type
Street Cleaning	100% of Transport Impervious Cover swept using SCP-1
Urban Nutrient Management	All eligible Pervious Cover has UNM Plan implementation which is split 20% High Risk and 80% Low Risk
Advanced Grey Infrastructure Nutrient Discovery Program & Storm Drain Clean Outs	5% of Urban N and P load removed due to both credits
Urban Stream Restoration	15% of urban stream miles in the RBS are restored @ twice the default SR value
Erosion & Sediment Control	100% of construction sites are treated to ESC Level 3 and have high risk UNM plans
Riparian Forest Buffers	Turfgrass (no canopy) within 30m of all streams and rivers that's unbuffered - from high-resolution land cover
Shoreline Erosion Control	Potential addition
Dirt & Gravel Road Erosion & Sediment Control	Driving Surface Aggregate + Raising the Roadbed; with Outlets will be included if domain determined and approved
Septic Connections	10%
Septic Denitrification Enhanced	100%
Forest Harvesting BMP	100%
DiploidOysters3	MD = 112 M oysters; VA = 280 M oysters

Phase 5 Planning Target Methodology "Hockey Stick"



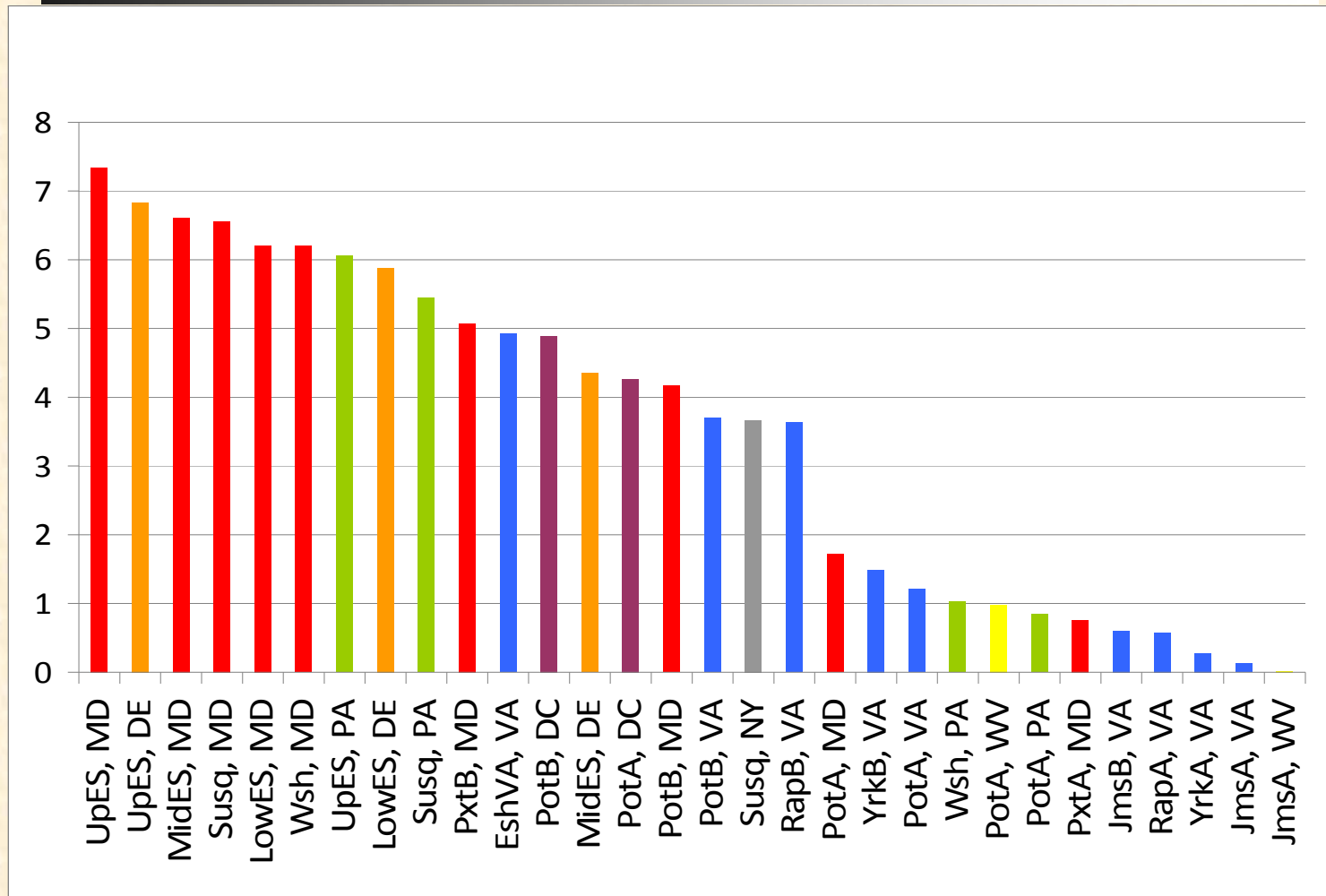


Relative Effect of a Pound of Pollution on Bay Water Quality





Major River Basin by Jurisdiction Relative Impact on Bay Water Quality



Phase 6 Model Scenarios

For final versions of Phase 6 scenarios and development of Planning Targets, we need:

- Decision on what year to use for No-Action and E3 scenarios – after assessing options
 - Initial scenarios are 2010 background conditions
- Workgroups can review model results of No-Action, E3, Phase II WIPs with Phase 6 model, etc.
- Geographic isolation runs
- Approved model – after fatal flaw review by partnership; September, 2017



Phase 6 Model Scenarios and Planning Target Development

Schedule

- Partnership's fatal flaw review of the Beta 6 modeling tools; through July 31, 2017



Phase 6 Model Scenarios and Planning Target Development

Schedule

- Partnership's fatal flaw review of the Beta 6 modeling tools; through July 31, 2017
- Fatal flaw issue resolution occurs in August, 2017
- WQGIT revisits midpoint assessment schedule based on Beta 6 fatal flaw review period; August 14, 2017 WQGIT call
- Partnership approval of Phase 6 modeling tools; September, 2017



Phase 6 Model Scenarios and Planning Target Development

Schedule

- Draft Phase III WIP planning target development;
August 1 – September 30, 2017
 - No-Action, E3 + geo-isolation runs, etc.
- Release of draft Phase III WIP planning targets;
October 31, 2017 - February 28, 2018 partnership
review
- PSC approval of final Phase III WIP planning
targets with special cases and release; March,
2018