

Progress 2015 Wastewater Data Summary

- Significant load reduction from the progress 2014
- The Bay wide wastewater TN discharged total load met the WIP2 target for the first time.
- Data quality issue
- Data QAQC Plan

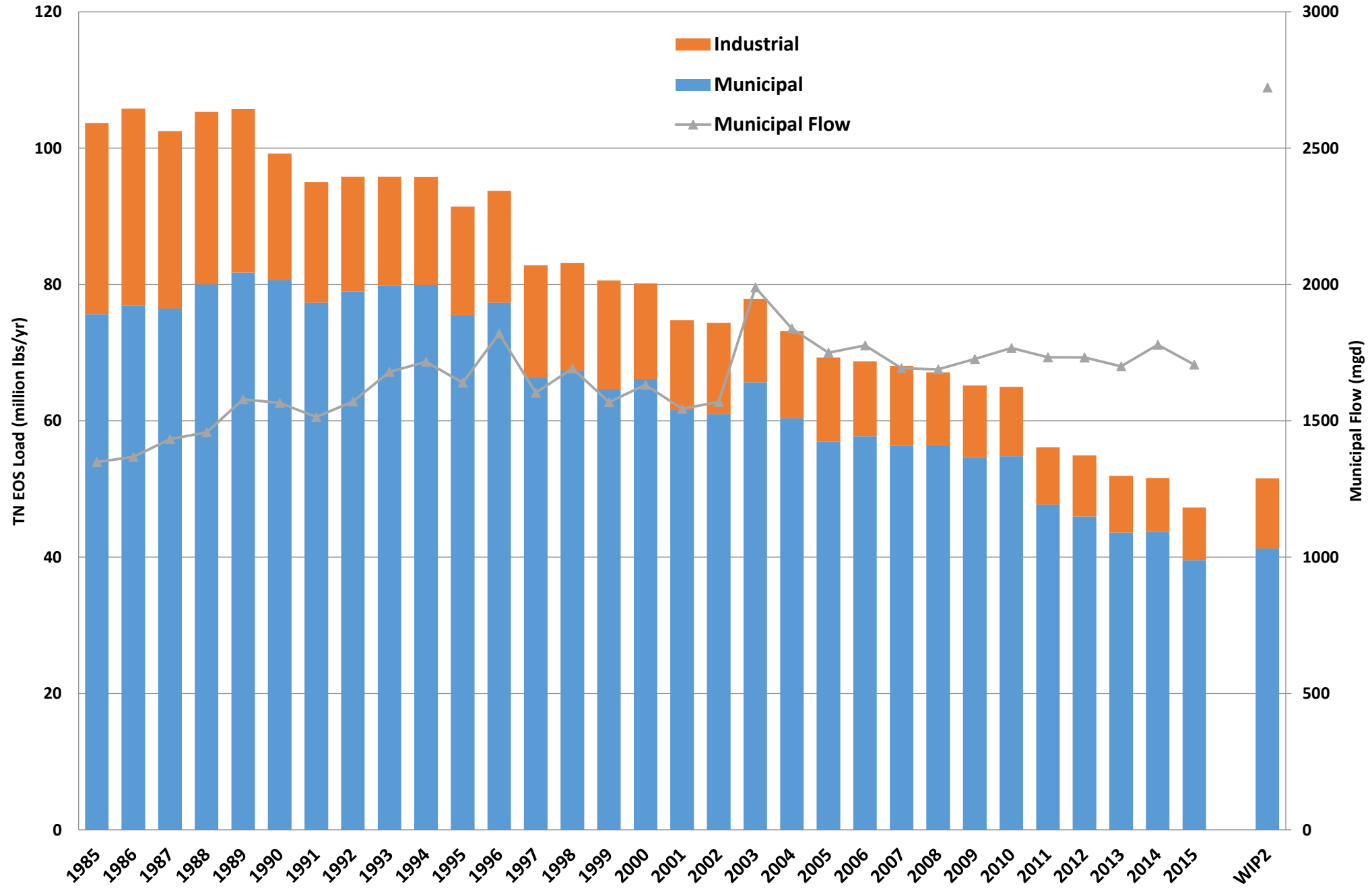


WWTP Discharged Loads (lbs/yr)												
2014				2015			Reduction (2014-2015)			% Reduction (2014-2015)		
STATE	TNL	TPL	TSSL	TNL	TPL	TSSL	TNL	TPL	TSSL	TNL	TPL	TSSL
DE	46,159	7,314	13,763	34,585	5,415	7,564	11,574	1,899	6,199	25.07%	25.97%	45.04%
DC	1,764,212	36,271	879,644	1,197,927	29,932	583,617	566,285	6,339	296,026	32.10%	17.48%	33.65%
MD	13,529,007	663,104	11,608,156	12,370,085	606,423	14,494,332	1,158,922	56,680	-2,886,177	8.57%	8.55%	-24.86%
NY	3,852,375	367,384	5,718,525	3,642,923	293,493	5,096,171	209,452	73,892	622,354	5.44%	20.11%	10.88%
PA	14,464,924	1,655,313	33,737,724	12,056,050	1,383,857	33,301,154	2,408,874	271,456	436,570	16.65%	16.40%	1.29%
VA	17,173,778	1,154,736	41,158,514	17,207,965	1,185,770	27,244,568	-34,187	-31,034	13,913,946	-0.20%	-2.69%	33.81%
WV	793,169	140,572	4,765,002	766,107	108,642	4,492,639	27,062	31,930	272,363	3.41%	22.71%	5.72%
TOTAL	51,623,623	4,024,695	97,881,327	47,275,642	3,613,532	85,220,045	4,347,981	411,163	12,661,282	8.42%	10.22%	12.94%

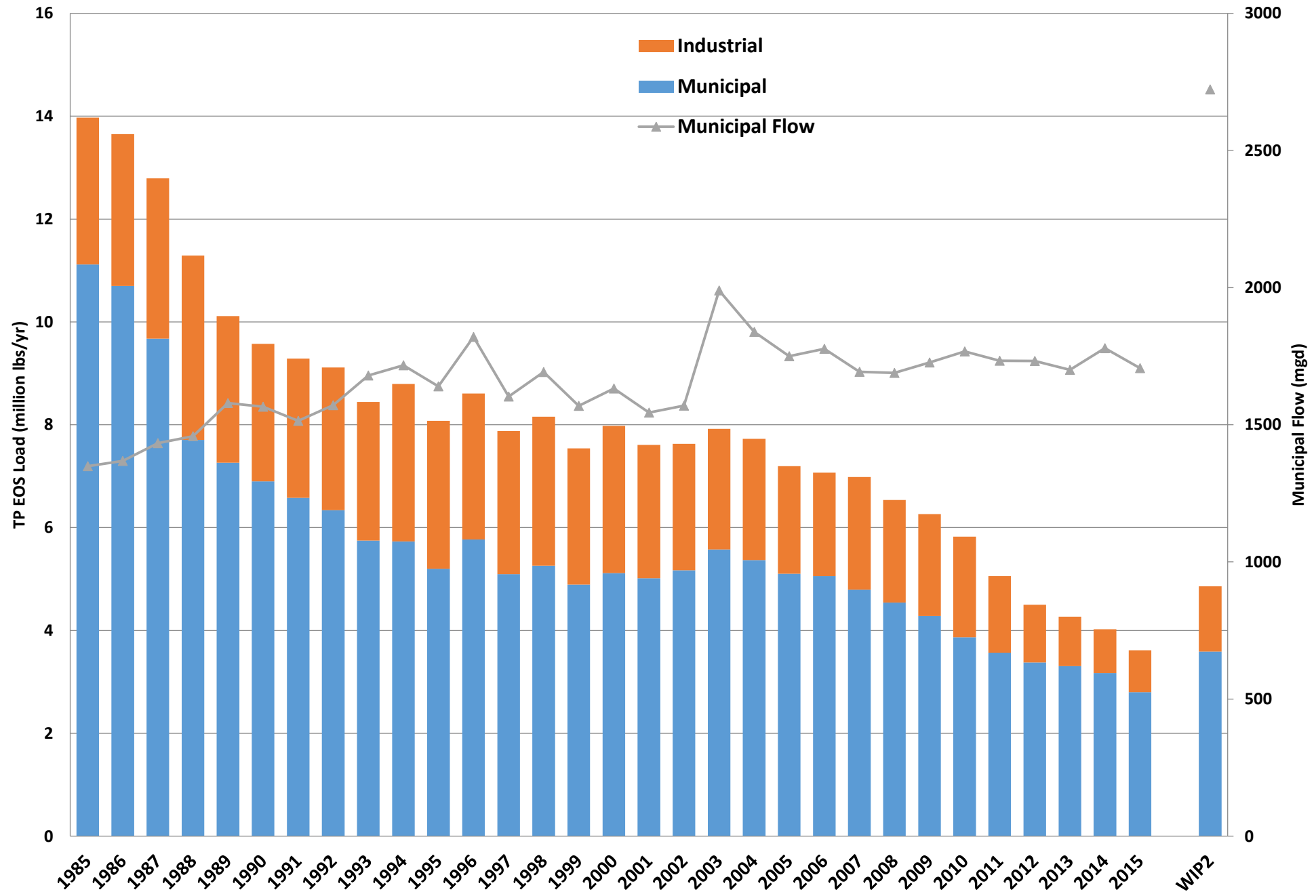
WWTP Delivered Loads (lbs/yr)												
2014				2015			Reduction (2014-2015)			% Reduction (2014-2015)		
STATE	TNL	TPL	TSSL	TNL	TPL	TSSL	TNL	TPL	TSSL	TNL	TPL	TSSL
DE	46,159	7,314	13,763	34,585	5,415	7,564	11,574	1,899	6,199	25.07%	25.97%	45.04%
DC	1,764,211	36,267	879,445	1,197,926	29,928	583,419	566,285	6,339	296,026	32.10%	17.48%	33.66%
MD	12,616,497	591,677	10,702,091	11,603,234	546,835	12,459,761	1,013,263	44,842	-1,757,671	8.03%	7.58%	-16.42%
NY	1,806,281	140,306	2,233,341	1,703,669	112,187	1,990,249	102,612	28,119	243,092	5.68%	20.04%	10.88%
PA	8,870,443	665,468	15,781,312	7,397,985	561,063	15,753,038	1,472,459	104,405	28,274	16.60%	15.69%	0.18%
VA	14,244,196	991,516	38,878,306	14,319,414	1,011,787	25,869,264	-75,218	-20,271	13,009,042	-0.53%	-2.04%	33.46%
WV	245,027	62,665	741,377	248,356	50,445	564,915	-3,328	12,220	176,462	-1.36%	19.50%	23.80%
TOTAL	39,592,815	2,495,213	69,229,636	36,505,168	2,317,659	57,228,211	3,087,647	177,554	12,001,425	7.80%	7.12%	17.34%

No CSO updates since 2011

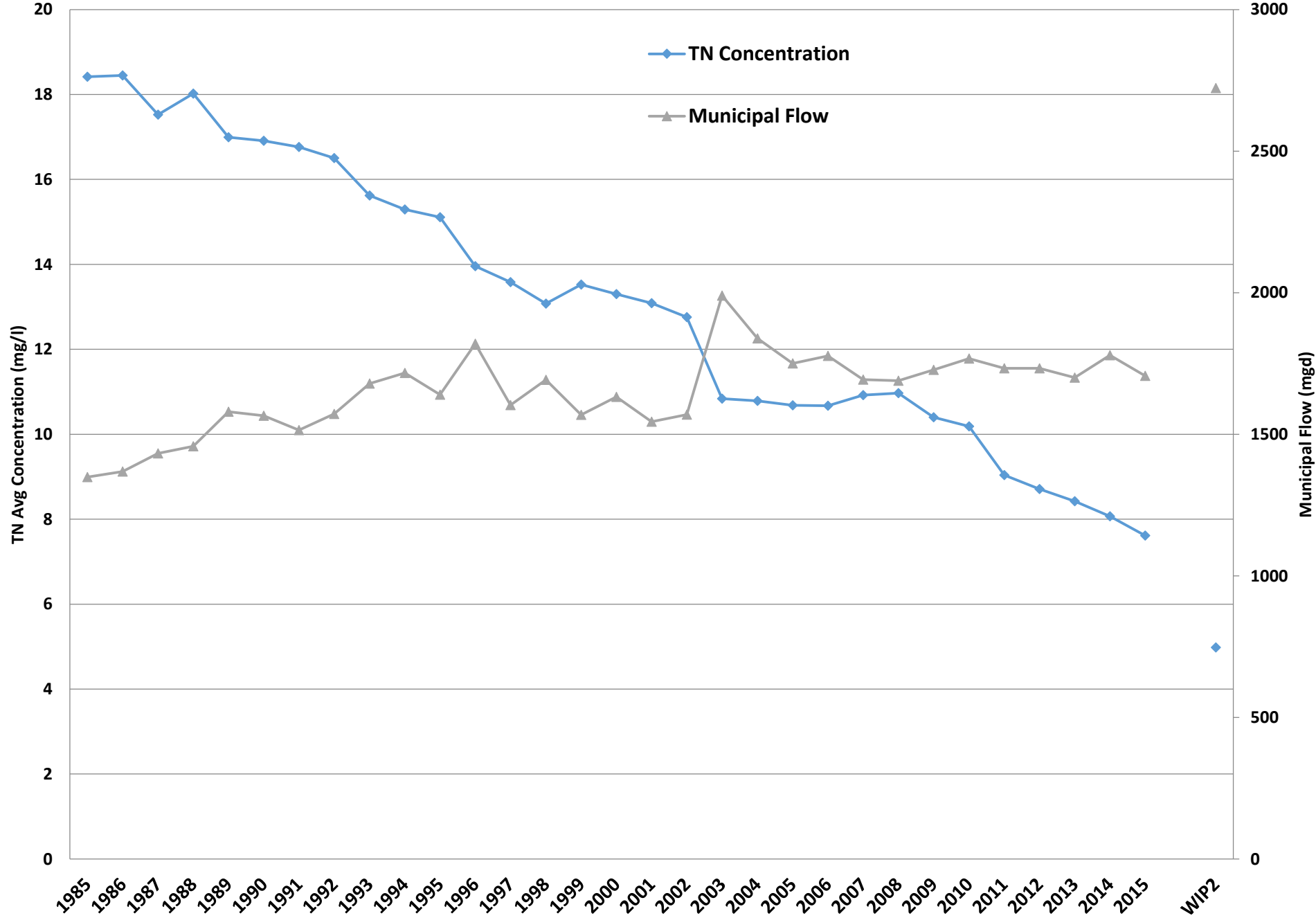
TN EOS Load (mil lbs/yr) vs Muncipal Flow (mgd) for all WWTPs



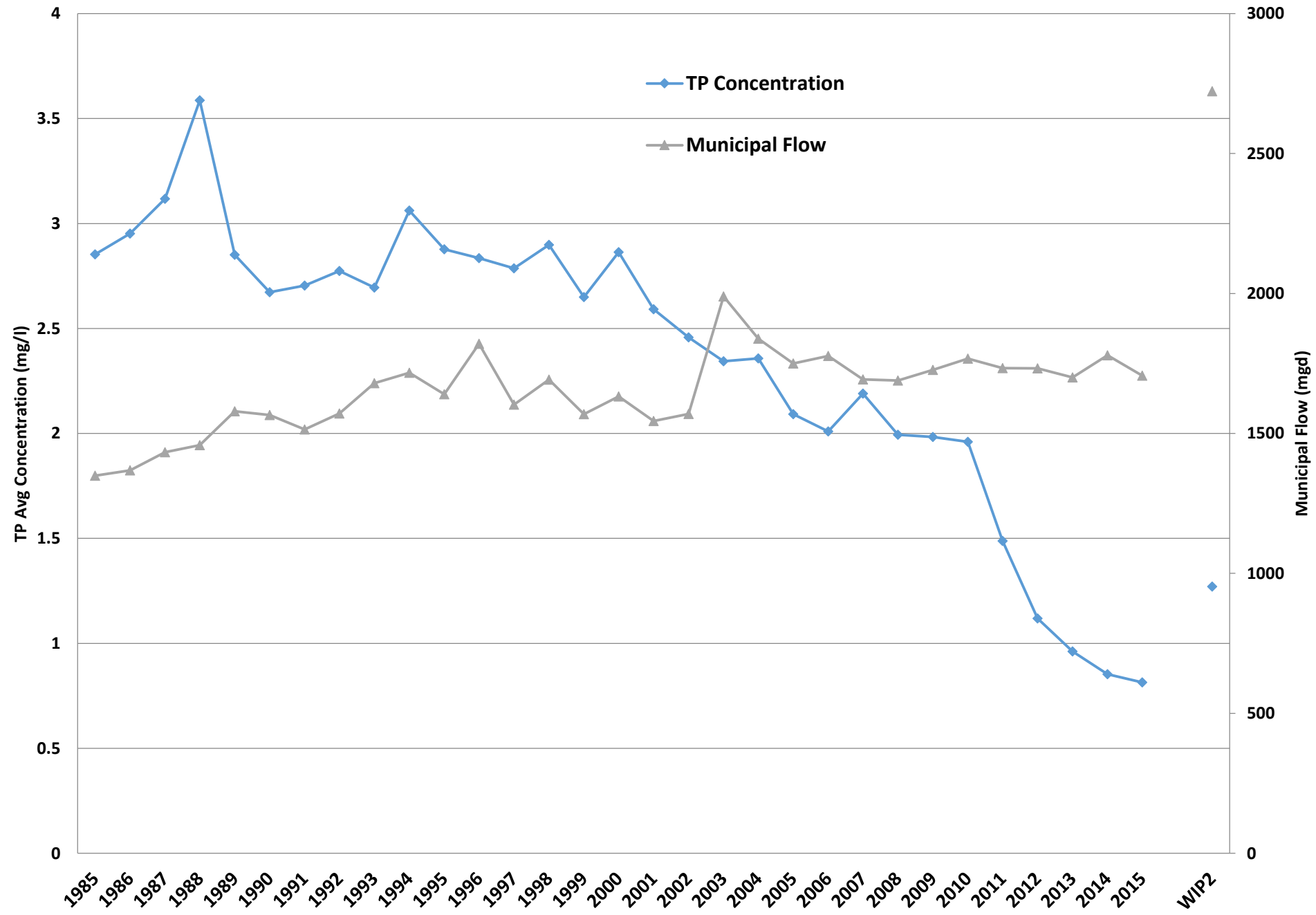
TP EOS Load (mil lbs/yr) vs Muncipal Flow (mgd) for all WWTPs



TN Average Concentration (mg/l) vs Flow (mgd) for Municipal WWTPs



TP Average Concentration (mg/l) vs Flow (mgd) for Municipal WWTPs



Top 20 Significant Municipal WWTP with TN Effluent Concentraion <4mg/l in 2015 progress

FACILITY	NPDES	FLOW (mgd)	TN (mg/l)	TNL (lbs/yr)
BLUE PLAINS	DC0021199	288.61	2.97	2,607,350
NOMAN M. COLE JR. POLLUTION CONTROL PLANT	VA0025364	37.91	2.04	235,172
ALEXANDRIA	VA0025160	33.75	3.80	391,049
PISCATAWAY	MD0021539	24.30	2.06	152,254
ARLINGTON	VA0025143	23.43	1.28	91,371
LITTLE PATUXENT	MD0055174	21.21	1.58	102,261
WESTERN BRANCH	MD0021741	20.72	1.93	121,520
SENECA CREEK	MD0021491	14.73	3.18	142,785
H.L. MOONEY	VA0025101	13.77	2.68	112,480
HARRISONBURG-ROCKINGHAM (NORTH RIVER REGIONAL)	VA0060640	12.22	3.17	118,013
SOD RUN	MD0056545	11.89	2.52	91,220
MOORES CREEK-RIVANNA AUTHORITY	VA0025518	10.23	1.33	41,552
CUMBERLAND	MD0021598	8.51	2.03	52,588
FWSA OPEQUON	VA0065552	7.06	1.95	41,807
HAGERSTOWN	MD0021776	6.95	2.97	62,893
PARKWAY	MD0021725	6.48	2.65	52,248
MASSAPONAX	VA0025658	6.46	3.59	70,639
BALLENGER CREEK	MD0021822	6.19	3.78	71,383
ALTOONA CITY AUTHORITY-WEST	PA0027022	5.84	2.23	39,697
AQUIA	VA0060968	5.04	1.31	20,099