

# Chesapeake Bay Nontidal Network: All Stations

## Nontidal Network (NTN) Stations

- NTN with Load and Trend
- NTN with Load
- New NTN with Monitoring Only

- Susquehanna
- Eastern Shore
- Western Shore
- Potomac
- Rappahannock
- York
- James

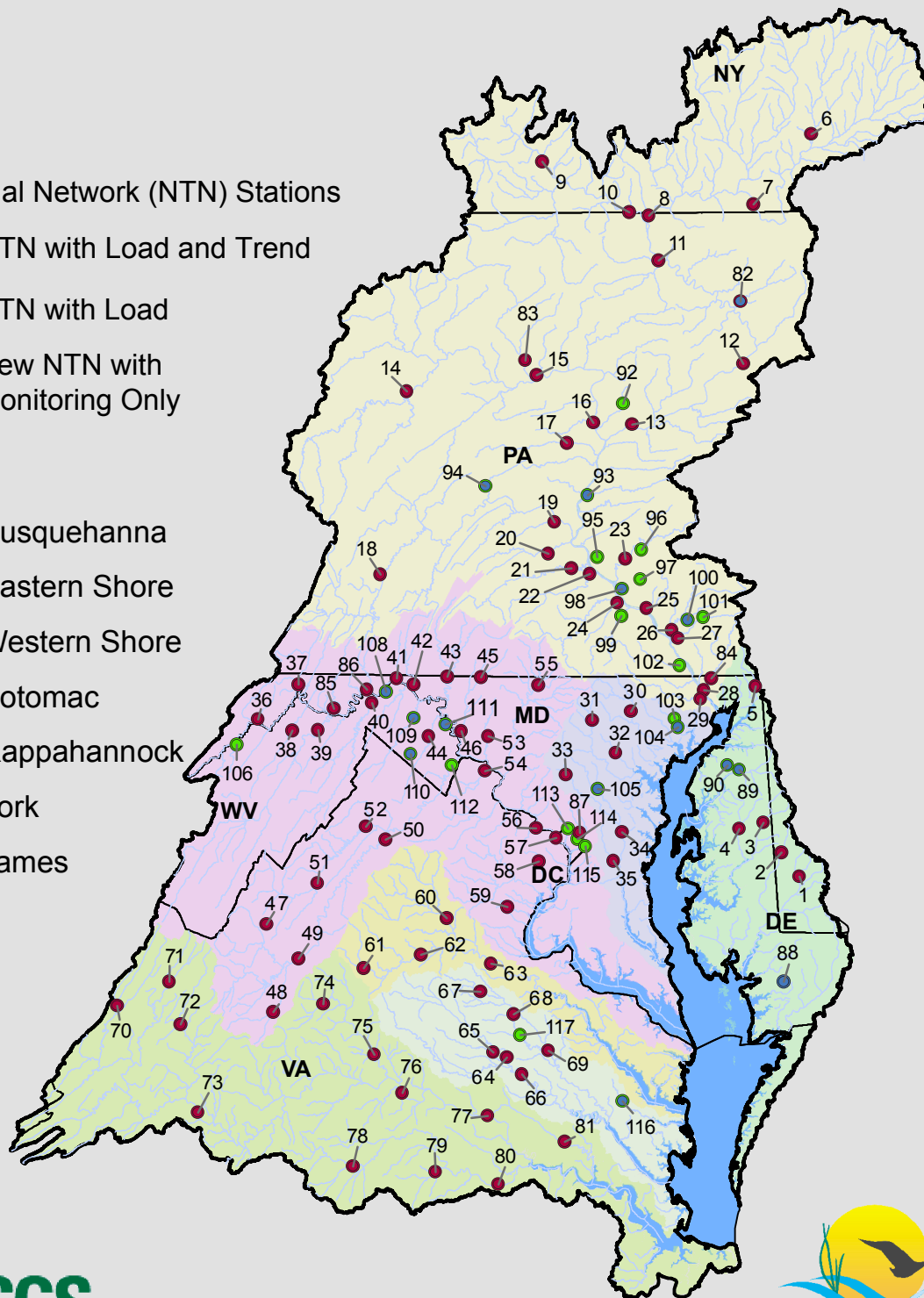


Table 1. Chesapeake Bay nontidal monitoring stations included in the determination of nutrient and suspended sediment loads and trends for the time period 1985 through 2016. Bold stations represent the nine River Input Monitoring stations.

MAP ID	USGS STATION NUMBER	USGS STATION NAME	MAJOR WATERSHED/REGION	Drainage Area (mi <sup>2</sup> )	MONITORING DATA	
					START DATE	END DATE
1	01487000	NANTICOKE RIVER NEAR BRIDGEVILLE, DE	Eastern Shore	75	1998	2016
2	01488500	MARSHYHOPE CREEK NEAR ADAMSVILLE, DE	Eastern Shore	47	2005	2016
3	<b>01491000</b>	<b>CHOPTANK RIVER NEAR GREENSBORO, MD</b>	<b>Eastern Shore</b>	113	<b>1985</b>	<b>2016</b>
4	01491500	TUCKAHOE CREEK NEAR RUTHSBURG, MD	Eastern Shore	85	2005	2016
5	01495000	BIG ELK CREEK AT ELK MILLS, MD	Eastern Shore	52	2005	2016
6	01502500	UNADILLA RIVER AT ROCKDALE NY	Susquehanna	520	2005	2016
7	01503000	SUSQUEHANNA RIVER AT CONKLIN NY	Susquehanna	2,232	2006	2016
8	01515000	SUSQUEHANNA RIVER NEAR WAVERLY NY	Susquehanna	4,773	2005	2016
9	01529500	COHOCTON RIVER NEAR CAMPBELL NY	Susquehanna	470	2006	2016
10	01531000	CHEMUNG RIVER AT CHEMUNG NY	Susquehanna	2,506	2005	2016
11	01531500	SUSQUEHANNA RIVER AT TOWANDA, PA	Susquehanna	7,797	1985	2016
82	01534000	TUNKHANNOCK CREEK NEAR TUNKHANNOCK, PA	Susquehanna	383	2009	2016
12	01536500	SUSQUEHANNA RIVER AT WILKES-BARRE, PA	Susquehanna	9,960	1989	2016
13	01540500	SUSQUEHANNA RIVER AT DANVILLE, PA	Susquehanna	11,220	1985	2016
14	01542500	WB SUSQUEHANNA RIVER AT KARTHAUS, PA	Susquehanna	1,462	2005	2016
83	01549700	PINE CREEK BL L PINE CREEK NEAR WATERVILLE, PA	Susquehanna	944	2007	2016
15	01549760	WB SUSQUEHANNA RIVER AT JERSEY SHORE, PA	Susquehanna	5,225	2006	2016
16	01553500	WEST BRANCH SUSQUEHANNA RIVER AT LEWISBURG, PA	Susquehanna	6,847	1985	2016
17	01555000	PENNS CREEK AT PENNS CREEK, PA	Susquehanna	301	2005	2016
18	01562000	RAYSTOWN BRANCH JUNIATA RIVER AT SAXTON, PA	Susquehanna	756	2005	2016
19	01567000	JUNIATA RIVER AT NEWPORT, PA	Susquehanna	3,354	1985	2016
20	01568000	SHERMAN CREEK AT SHERMANS DALE, PA	Susquehanna	207	2005	2016
21	01570000	CONODOGUINET CREEK NEAR HOGESTOWN, PA	Susquehanna	470	2005	2016
22	01571500	YELLOW BREECHES CREEK NEAR CAMP HILL, PA	Susquehanna	213	2005	2016
23	01573560	SWATARA CREEK NEAR HERSHEY, PA	Susquehanna	483	2005	2016
24	01574000	WEST CONEWAGO CREEK NEAR MANCHESTER, PA	Susquehanna	510	2005	2016
25	01576000	SUSQUEHANNA RIVER AT MARIETTA, PA	Susquehanna	25,990	1987	2016
26	01576754	CONESTOGA RIVER AT CONESTOGA, PA	Susquehanna	470	1985	2016
27	01576787	PEQUEA CREEK AT MARTIC FORGE, PA	Susquehanna	148	2005	2016
28	<b>01578310</b>	<b>SUSQUEHANNA RIVER AT CONOWINGO, MD</b>	<b>Susquehanna</b>	27,100	<b>1985</b>	<b>2016</b>
84	01578475	OCTORARO CREEK NEAR RICHARDSMERE, MD	Susquehanna	177	2007	2016
29	01580520	DEER CREEK NEAR DARLINGTON, MD	Susquehanna	164	2006	2016
30	01582500	GUNPOWDER FALLS AT GLENCOE, MD	Western Shore	160	1985	2016
31	01586000	NORTH BRANCH PATAPSCO RIVER AT CEDARHURST, MD	Western Shore	57	1985	2016
32	01589300	GWYNNS FALLS AT VILLA NOVA, MD	Western Shore	32	2003	2016
33	01591000	PATUXENT RIVER NEAR UNITY, MD	Western Shore	35	1985	2016
34	<b>01594440</b>	<b>PATUXENT RIVER NEAR BOWIE, MD</b>	<b>Western Shore</b>	348	<b>1985</b>	<b>2016</b>
35	01594526	WESTERN BRANCH AT UPPER MARLBORO, MD	Western Shore	90	2006	2016
36	01599000	GEORGES CREEK AT FRANKLIN, MD	Potomac	72	1985	2016
37	01601500	WILLS CREEK NEAR CUMBERLAND, MD	Potomac	247	1985	2016
38	01604500	PATTERSON CREEK NEAR HEADSVILLE, WV	Potomac	221	2006	2016
39	01608500	SOUTH BRANCH POTOMAC RIVER NEAR SPRINGFIELD, WV	Potomac	1,461	2006	2016
85	01609000	TOWN CREEK NEAR OLDTOWN, MD	Potomac	148	2007	2016
86	01610155	SIDELING HILL CREEK NEAR BELLEGROVE, MD	Potomac	102	2007	2016
40	01611500	CACAPON RIVER NEAR GREAT CACAPON, WV	Potomac	675	2006	2016
41	01613095	TONOLOWAY CREEK NEAR HANCOCK, MD	Potomac	111	2006	2016
42	01613525	LICKING CREEK AT PECTONVILLE, MD	Potomac	193	2006	2016
43	01614500	CONOCOCHAGUE CREEK AT FAIRVIEW, MD	Potomac	494	1985	2016
44	01616500	OPEQUON CREEK NEAR MARTINSBURG, WV	Potomac	273	2006	2016
45	01619000	ANTIETAM CREEK NEAR WAYNESBORO, PA	Potomac	93	2006	2016
46	01619500	ANTIETAM CREEK NEAR SHARPSBURG, MD	Potomac	281	1985	2016
47	01621050	MUDDY CREEK AT MOUNT CLINTON, VA	Potomac	14	1994	2016
48	01626000	SOUTH RIVER NEAR WAYNESBORO, VA	Potomac	127	1985	2016
49	01628500	S F SHENANDOAH RIVER NEAR LYNNWOOD, VA	Potomac	1,079	1985	2016
50	01631000	S F SHENANDOAH RIVER AT FRONT ROYAL, VA	Potomac	1,634	1985	2016
51	01632900	SMITH CREEK NEAR NEW MARKET, VA	Potomac	94	1985	2016
52	01634000	N F SHENANDOAH RIVER NEAR STRASBURG, VA	Potomac	770	1985	2016
53	01637500	CATOCTIN CREEK NEAR MIDDLETOWN, MD	Potomac	67	1985	2016
54	01638480	CATOCTIN CREEK AT TAYLORSTOWN, VA	Potomac	89	1985	2016
55	01639000	MONOCACY RIVER AT BRIDGEPORT, MD	Potomac	173	1985	2016
56	01646000	DIFFICULT RUN NEAR GREAT FALLS, VA	Potomac	58	1985	2016
57	<b>01646580</b>	<b>POTOMAC RIVER AT CHAIN BRIDGE, AT WASHINGTON, DC</b>	<b>Potomac</b>	11,570	<b>1985</b>	<b>2016</b>
87	01651000	NORTHWEST BR ANACOSTIA RIVER NR HYATTSVILLE, MD	Potomac	49	2007	2016
58	01654000	ACCOTINK CREEK NEAR ANNANDALE, VA	Potomac	24	1991	2016

Table 1. Chesapeake Bay nontidal monitoring stations included in the determination of nutrient and suspended sediment loads and trends for the time period 1985 through 2016. Bold stations represent the nine River Input Monitoring stations.

MAP ID	USGS STATION NUMBER	USGS STATION NAME	MAJOR WATERSHED/REGION	Drainage Area (mi <sup>2</sup> )	MONITORING DATA	
					START DATE	END DATE
59	01658500	S F QUANTICO CREEK NEAR INDEPENDENT HILL, VA	Potomac	8	1994	2016
60	01664000	RAPPAHANNOCK RIVER AT REMINGTON, VA	Virginia	619	1985	2016
61	01665500	RAPIDAN RIVER NEAR RUCKERSVILLE, VA	Virginia	115	2003	2016
62	01667500	RAPIDAN RIVER NEAR CULPEPER, VA	Virginia	468	2005	2016
<b>63</b>	<b>01668000</b>	<b>RAPPAHANNOCK RIVER NEAR FREDERICKSBURG, VA</b>	<b>Virginia</b>	<b>1,595</b>	<b>1985</b>	<b>2016</b>
64	01671020	NORTH ANNA RIVER AT HART CORNER NEAR DOSWELL, VA	Virginia	462	1985	2016
65	01671100	LITTLE RIVER NEAR DOSWELL, VA	Virginia	107	2001	2016
<b>66</b>	<b>01673000</b>	<b>PAMUNKEY RIVER NEAR HANOVER, VA</b>	<b>Virginia</b>	<b>1,078</b>	<b>1985</b>	<b>2016</b>
67	01673800	PO RIVER NEAR SPOTSYLVANIA, VA	Virginia	78	1987	2016
68	01674000	MATTAPONI RIVER NEAR BOWLING GREEN, VA	Virginia	256	1985	2016
<b>69</b>	<b>01674500</b>	<b>MATTAPONI RIVER NEAR BEULAHVILLE, VA</b>	<b>Virginia</b>	<b>603</b>	<b>1985</b>	<b>2016</b>
70	02011500	BACK CREEK NEAR MOUNTAIN GROVE, VA	Virginia	134	1985	2016
71	02015700	BULLPASTURE RIVER AT WILLIAMSVILLE, VA	Virginia	110	1985	2016
72	02020500	CALFPASTURE RIVER ABOVE MILL CREEK AT GOSHEN, VA	Virginia	141	1999	2016
73	02024752	JAMES RIVER AT BLUE RIDGE PKWY NR BIG ISLAND, VA	Virginia	3,076	2006	2016
74	02031000	MECHUMS RIVER NEAR WHITE HALL, VA	Virginia	95	1985	2016
75	02034000	RIVANNA RIVER AT PALMYRA, VA	Virginia	663	1985	2016
<b>76</b>	<b>02035000</b>	<b>JAMES RIVER AT CARTERSVILLE, VA</b>	<b>Virginia</b>	<b>6,252</b>	<b>1985</b>	<b>2016</b>
77	02037500	JAMES RIVER NEAR RICHMOND, VA	Virginia	6,753	1985	2016
78	02039500	APPOMATTOX RIVER AT FARMVILLE, VA	Virginia	302	1985	2016
79	02041000	DEEP CREEK NEAR MANNBORO, VA	Virginia	158	1991	2016
<b>80</b>	<b>02041650</b>	<b>APPOMATTOX RIVER AT MATOACA, VA</b>	<b>Virginia</b>	<b>1,342</b>	<b>1985</b>	<b>2016</b>
81	02042500	CHICKAHOMINY RIVER NEAR PROVIDENCE FORGE, VA	Virginia	251	1985	2016

Table 2. New Chesapeake Bay nontidal monitoring stations added since 2011.

MAP ID	USGS STATION NUMBER	USGS STATION NAME	MAJOR WATERSHED/REGION	Drainage Area (mi <sup>2</sup> )	MONITORING DATA	
					START DATE	END DATE
88	01486000	MANOKIN BRANCH NEAR PRINCESS ANNE, MD	Eastern Shore	5	2011	2016
89	01493112	CHESTERVILLE BRANCH NEAR CRUMPTON, MD	Eastern Shore	6	2011	2016
90	01493500	MORGAN CREEK NEAR KENNEDYVILLE, MD	Eastern Shore	13	2011	2016
<b>91</b>	<b>01511500</b>	<b>THOUGHNIAGA RIVER AT ITASKA, NY</b>	<b>Susquehanna</b>	<b>730</b>	<b>2012</b>	<b>2014</b>
92	01553700	CHILLISQUAQUE CREEK AT WASHINGTONVILLE, PA	Susquehanna	51	2013	2016
93	01555500	EAST MAHANTANGO CREEK NEAR DALMATIA, PA	Susquehanna	162	2012	2016
94	01565000	KISHACOQUILLAS CREEK AT REEDSVILLE, PA	Susquehanna	164	2012	2016
95	01571005	PAXTON CREEK NEAR GLENNWOOD, PA	Susquehanna	11	2013	2016
96	01573160	QUITTAPAHILLA CREEK NEAR BELLEGROVE	Susquehanna	74	2013	2016
97	01573695	CONEWAGO CREEK NEAR BELLAIRE, PA	Susquehanna	21	2013	2016
98	01573710	CONEWAGO CREEK NEAR FALMOUTH, PA	Susquehanna	48	2011	2016
99	01575585	CODORUS CREEK NEAR PLEASUREVILLE, PA	Susquehanna	267	2013	2016
100	15765195	BIG SPRING RUN NEAR MYLIN CORNERS, PA	Susquehanna	2	2011	2016
101	01576767	PEQUEA CREEK NEAR RONKS, PA	Susquehanna	70	2013	2016
102	01577500	MUDDY CREEK AT CASTLE FIN, PA	Susquehanna	133	2015	2016
103	01581752	PLUMTREE RUN NEAR BEL AIR, MD	Western Shore	3	2013	2016
104	0158175320	WHEEL CREEK NEAR ABINGDON, MD	Western Shore	1	2011	2016
105	01593500	LITTLE PATUXENT RIVER AT GUILFORD, MD	Western Shore	38	2011	2016
106	01595300	ABRAM CREEK AT OAKMONT, WV	Potomac	43	2013	2016
<b>107</b>	<b>01601100</b>	<b>WILLS CREEK AT ELLERSLIE, MD</b>	<b>Potomac</b>	<b>185</b>	<b>2012</b>	<b>2014</b>
108	01613030	WARM SPRINGS RUN NEAR BERKELEY SPRINGS, WV	Potomac	7	2011	2016
109	01614000	BACK CREEK NEAR JONES SPRINGS, WV	Potomac	235	2012	2016
110	01616400	MILL CREEK AT BUNKER HILL, WV	Potomac	18	2011	2016
111	01618100	ROCKYMARSH RUN AT SCRABBLE, WV	Potomac	16	2011	2016
112	01636500	SHENANDOAH RIVER AT MILLVILLE, WV	Potomac	3041	2013	2016
113	01648000	ROCK CREEK AT SHERILL DRIVE AT WASHINGTON, DC	Potomac	62	2013	2016
114	01651770	HICKEY RUN AT NEW YORK AVENUE AT WASHINGTON, DC	Potomac	1	2013	2016
115	01651800	WATTS BRANCH AT WASHINGTON, DC	Potomac	3	2013	2016
116	01669520	DRAGON SWAMP AT MASCOT, VA	Virginia	109	2011	2016
117	01674182	POLECAT CREEK AT ROUTE 301 NEAR PENOLA, VA	Virginia	49	2013	2016

# Total Nitrogen per Acre Loads and Trends: 2007-2016

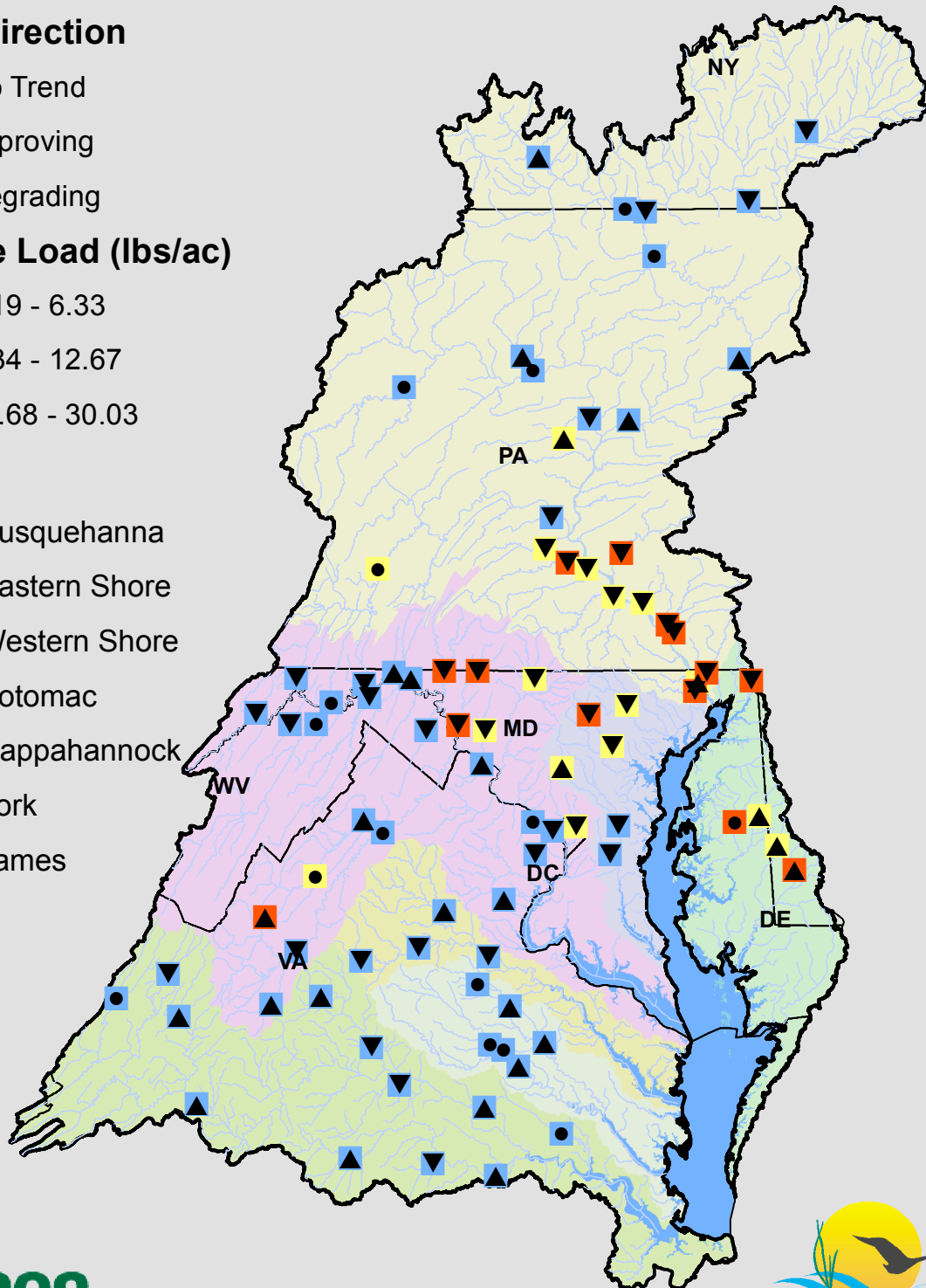
## Trend Direction

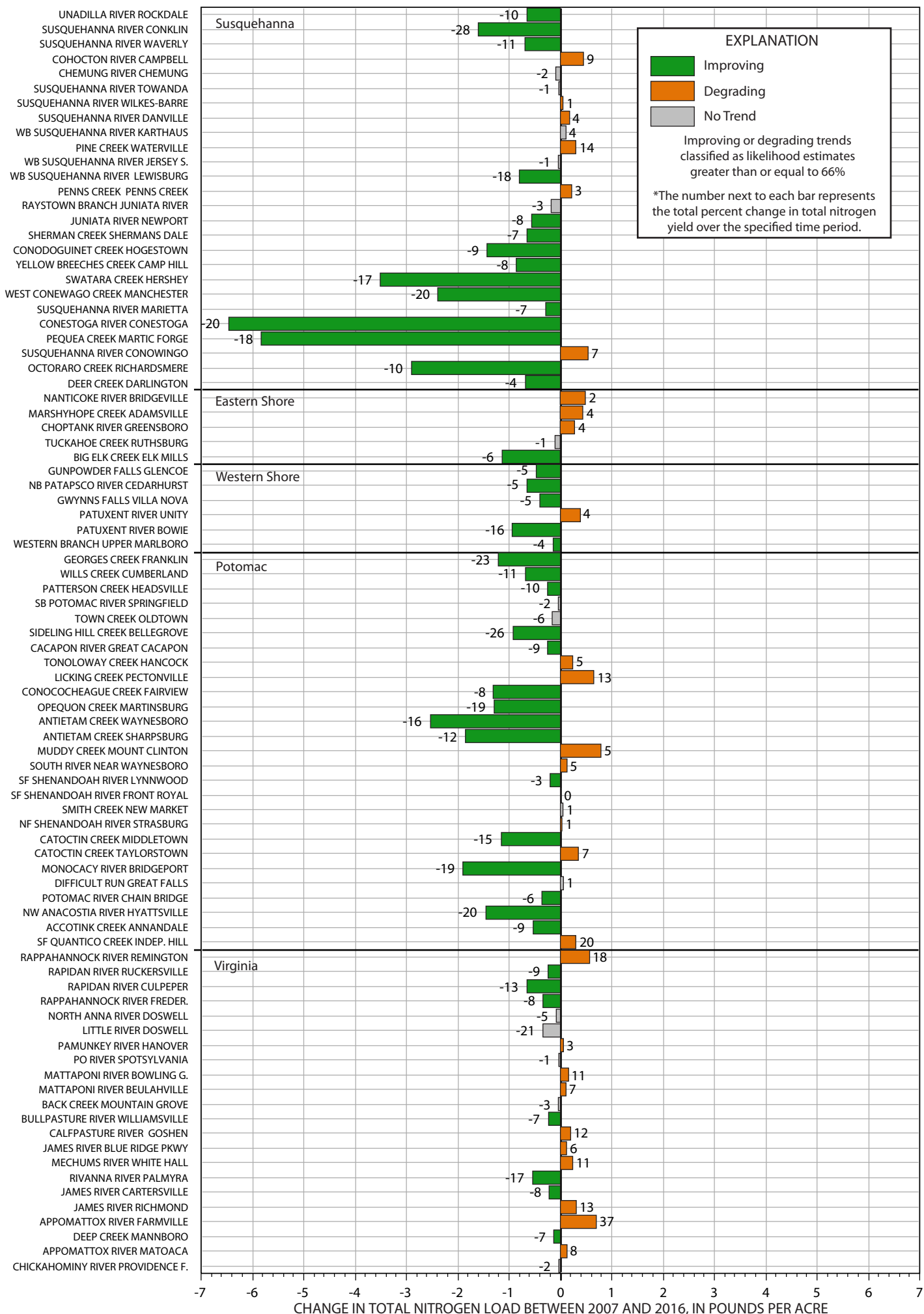
- No Trend
- ▼ Improving
- ▲ Degrading

## Average Load (lbs/ac)

- 1.19 - 6.33
- 6.34 - 12.67
- 12.68 - 30.03

- Susquehanna
- Eastern Shore
- Western Shore
- Potomac
- Rappahannock
- York
- James







# Total Phosphorus per Acre Loads and Trends: 2007-2016

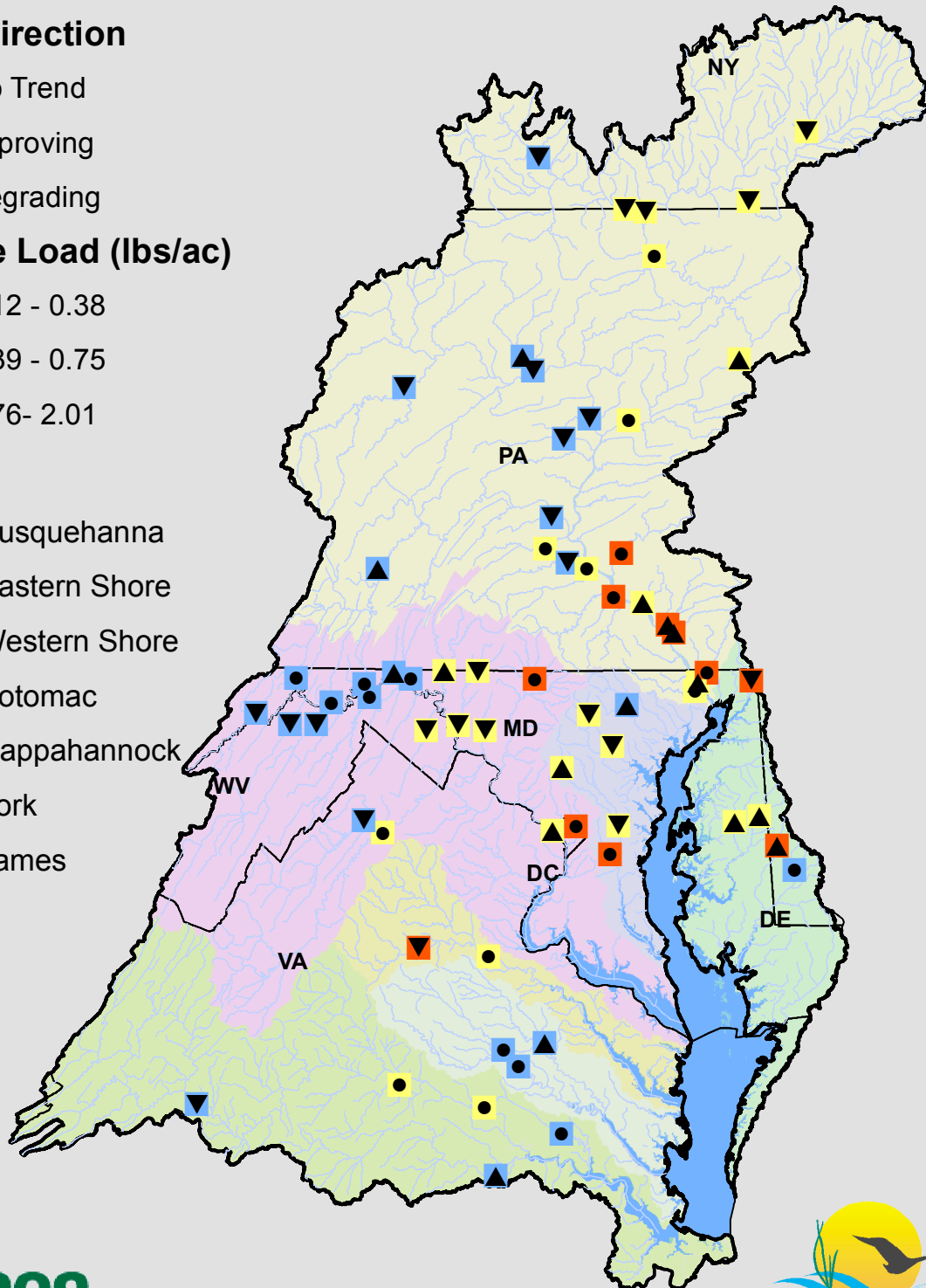
## Trend Direction

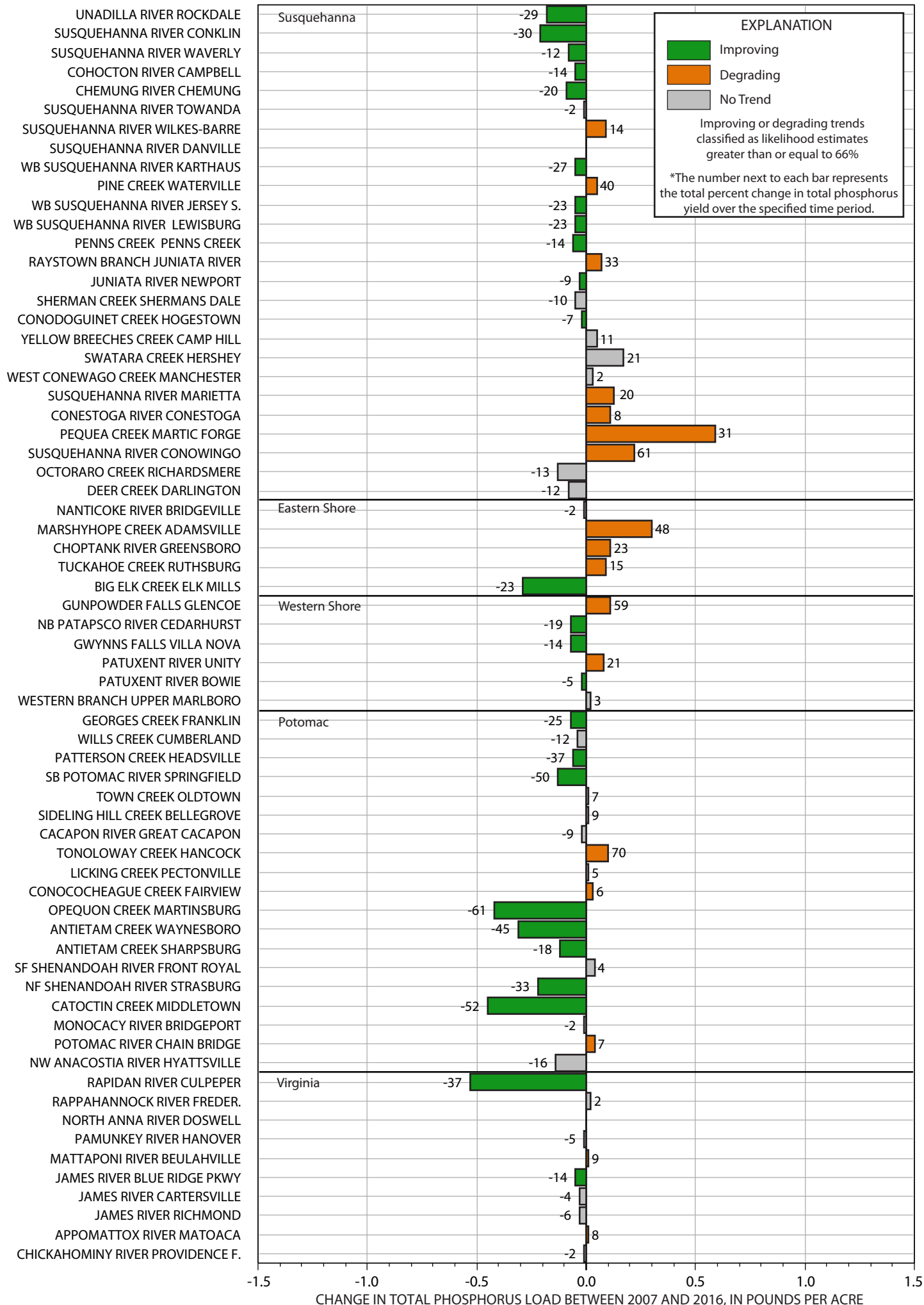
- No Trend
- ▼ Improving
- ▲ Degrading

## Average Load (lbs/ac)

- 0.12 - 0.38
- 0.39 - 0.75
- 0.76 - 2.01

- Susquehanna
- Eastern Shore
- Western Shore
- Potomac
- Rappahannock
- York
- James





# Suspended Sediment per Acre Loads and Trends: 2007-2016

## Trend Direction

- No Trend
- ▼ Improving
- ▲ Degrading

## Average Load (lbs/ac)

- 19 - 365
- 366 - 729
- 730 - 1669

- Susquehanna
- Eastern Shore
- Western Shore
- Potomac
- Rappahannock
- York
- James

