

CAST Functionality: *What's Next*

WATER QUALITY GOAL IMPLEMENTATION TEAM

OCTOBER 25 – 26, 2021

OLIVIA DEVEREUX



Overview

CAST Users

What CAST currently *can* do

Transparency in
progress/CAST/NEIEN

Spatially-explicit functionality in
CAST

Co-Benefits and Eco-System
Services

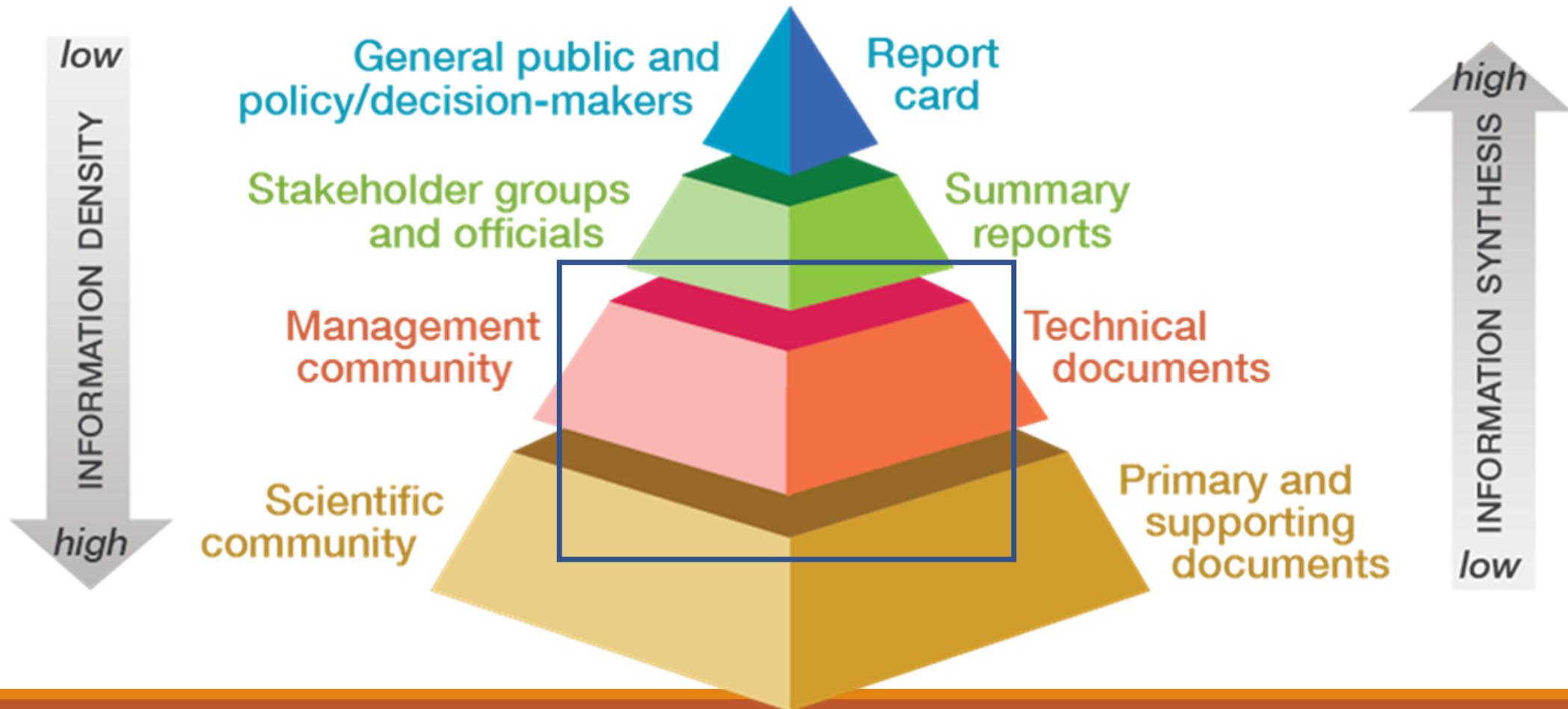
Who is CAST for?

Technical managers within jurisdiction agencies who plan and report for the 2010 Bay TMDL

Local watershed organizations

Local government planners

Federal, state, and academic researchers



Questions

Current

- What are the most commonly used BMPs?
- What has BMP implementation changed over time?
- What are the lowest cost, most effective BMPs?

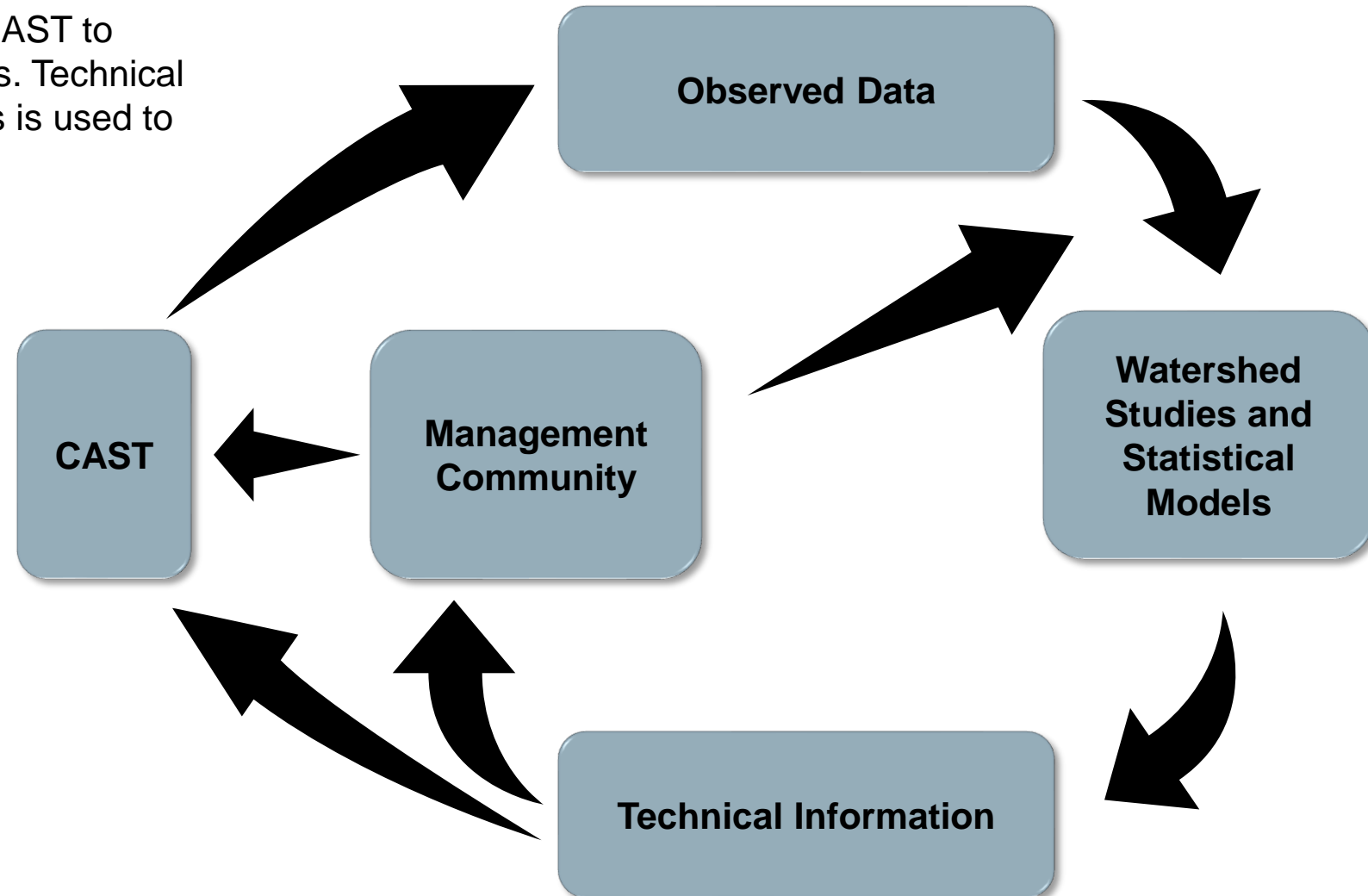
Future

- BMP Benefits and Eco-System Services
- Spatially Explicit CAST
- Transparency in BMP annual reporting

The Chesapeake Bay watershed model (CAST) is a comprehensive synthesis of knowledge that can help direct management

The management community largely relies on CAST to understand and improve water-quality conditions. Technical information about water-quality loads and trends is used to improve and assess modeled predictions.

- **Observed data** are used to develop **watershed studies and statistical models**, based on priorities identified by the **management community**.
- **Watershed studies and statistical models** provide **technical information** that are communicated to the **management community** and used to improve **CAST**.
- The **management community** uses **CAST** to develop management strategies.
- **CAST** assesses predictions and performance against **observed data**.



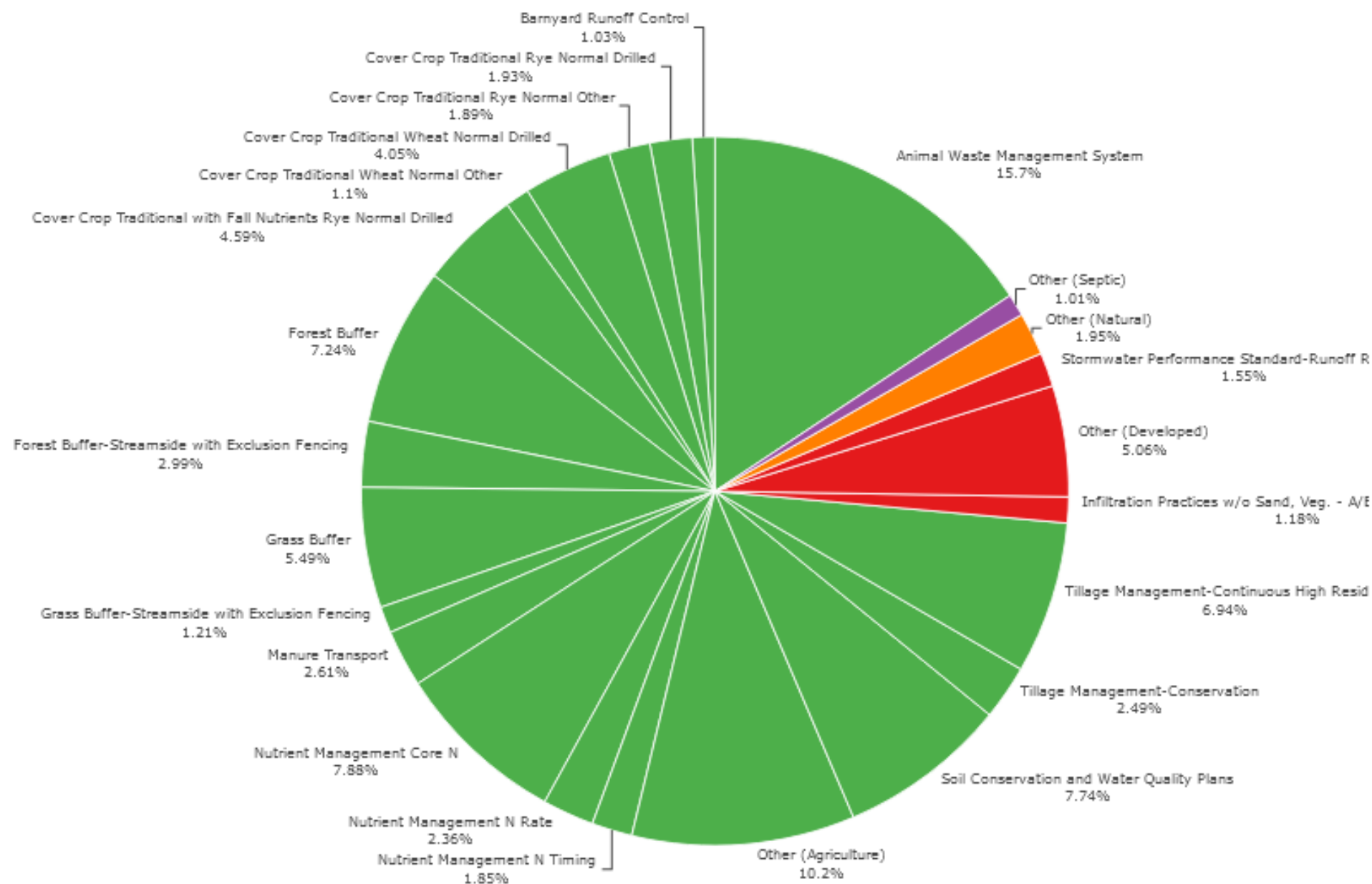


Trends Over Time

View trends for loads, nutrients, animal units and septic systems for Bay jurisdictions from 1984 through 2025.

- [BMPs implemented](#)
- [Loads delivered to the streams and the Bay](#)
- [Wastewater](#)
- [Nutrients applied to the land](#)
- [Animal numbers](#)
- [Septic systems](#)
- [Estuary Summaries](#)

BMP Effectiveness for Nitrogen (Unweighted Percentages for Chesapeake Bay Watershed)



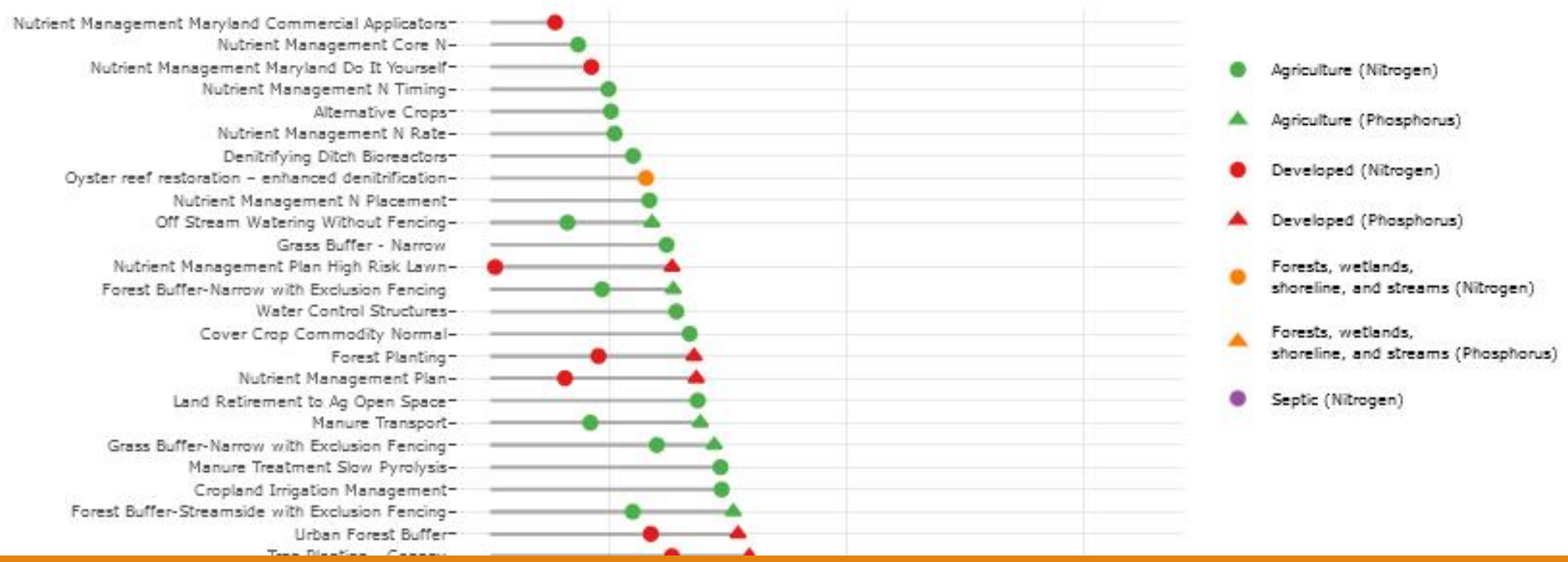


[BMP Effectiveness](#) [BMP Cost-Effectiveness](#) [Most Implemented BMPs](#) [Overall Costs](#)

Choose the Geography

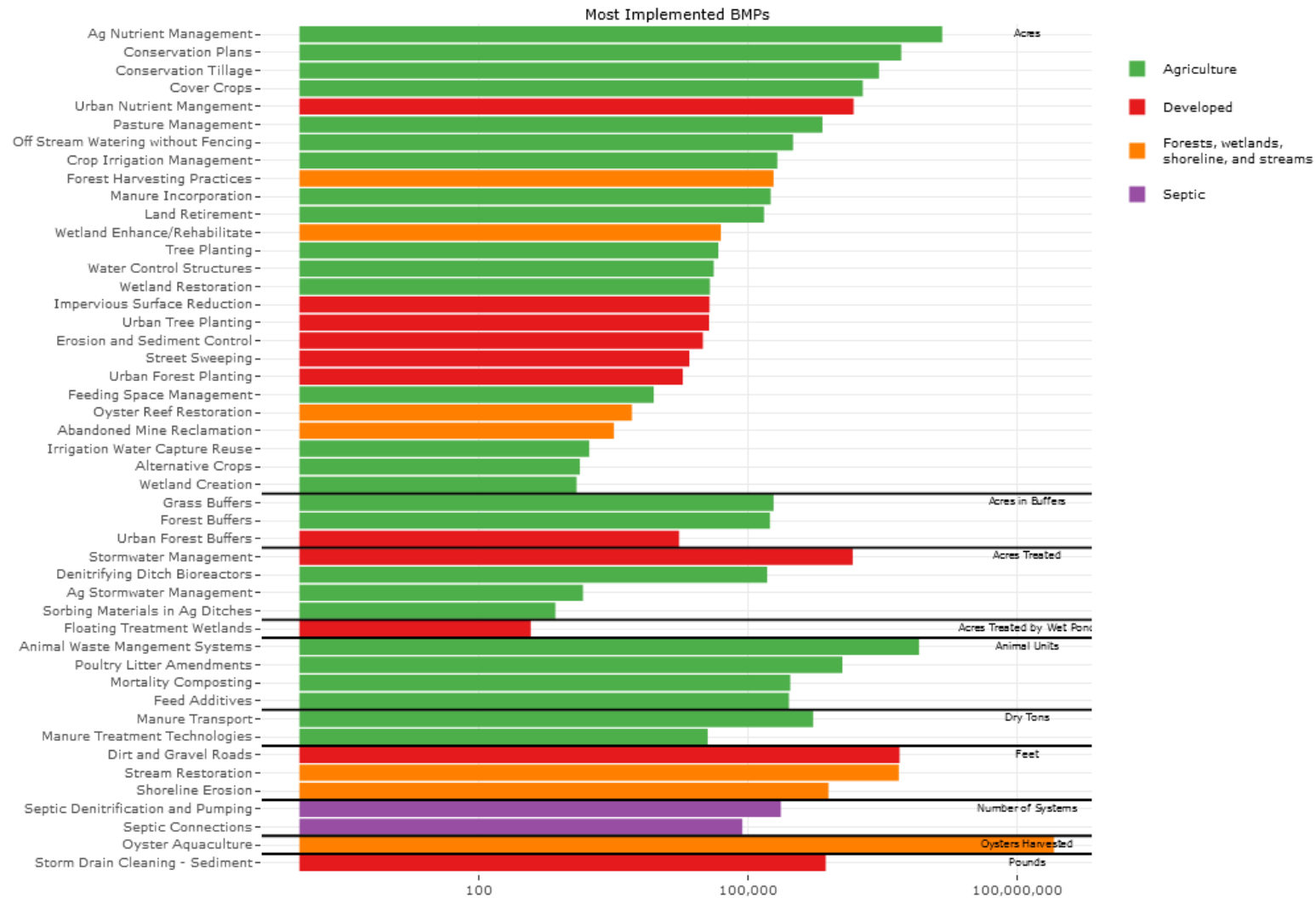
Chesapeake Bay Watershed

BMP Cost-effectiveness (N vs. P for Chesapeake Bay Watershed)

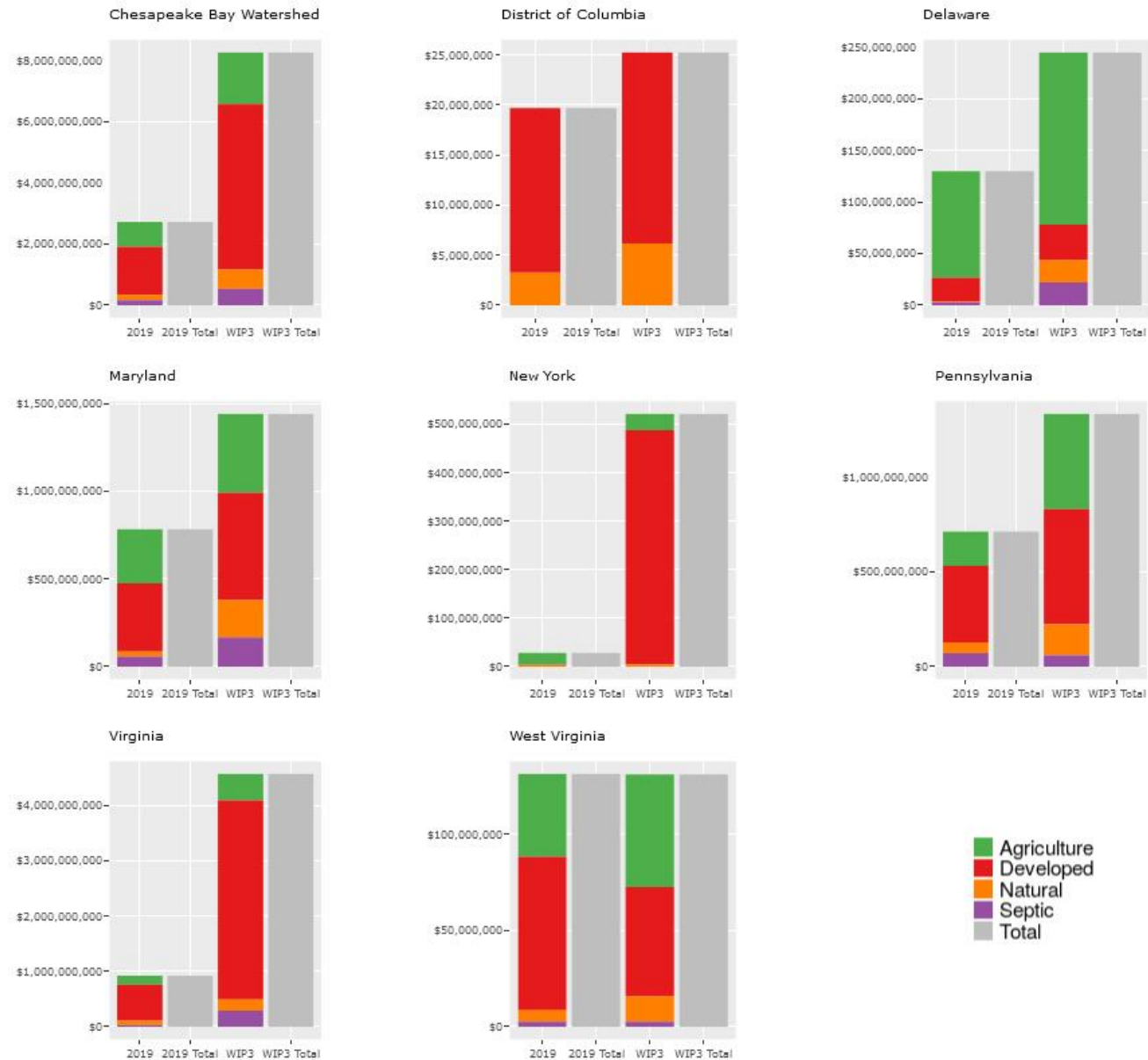


Choose the Geography

Chesapeake Bay Watershed



2019 and WIP3 Implementation Costs



Are most BMP investments being made in the highest loading areas of the watershed?

This question can be answered with CAST

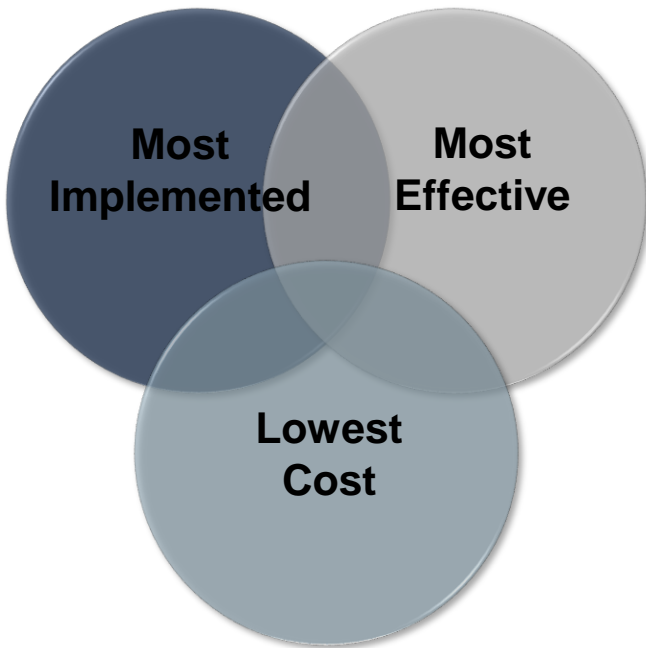
CAST is a free, online nitrogen, phosphorus and sediment load estimator tool that streamlines environmental planning:

cast.chesapeakebay.net

CAST provides estimates of BMP costs and expected nutrient/sediment reductions, customized by geography, that can be used to target cost effective BMPs.

In addition to targeting BMPs in high loading areas, BMPs can be targeted that offer the largest nutrient and sediment reductions at the lowest cost.

The most commonly used BMPs are not always the most cost effective. Understanding local conditions, BMP co-benefits, and cost effectiveness are some of the considerations that make up an effective management strategy.



***Below:** Average cost effectiveness of nitrogen and phosphorus BMPs by source sector, as estimated by CAST.¹*

Source Sector	Average Cost Effectiveness (\$/lb reduced)	
	Nitrogen	Phosphorus
Agriculture	\$108	\$10,100
Developed	\$7,724	\$80,349
Septic	\$1,006	\$0
Natural*	\$548	\$2,461

*BMPs in the natural sector include practices such as wetland enhancements, forest harvesting practices, oyster practices, and non-urban shoreline management and stream restoration.

Learn more about these data and developing management plans by viewing CAST training videos:

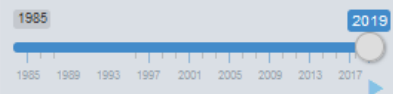
cast.chesapeakebay.net/Learning/FreeTrainingVideos

Wastewater

For each municipal and industrial facility outfall, view the pounds of nitrogen or phosphorus per year. Hovering over the facilities on the map will display more detailed information.

Select a pollutant from the drop down menu, then select a year between 1985 and 2019 from the timeline.

Loads at the edge of tide are the pounds delivered to the edge of the tidal area of the Chesapeake Bay and loads at the edge of stream are the pounds delivered to the edge of a perennial, small stream.

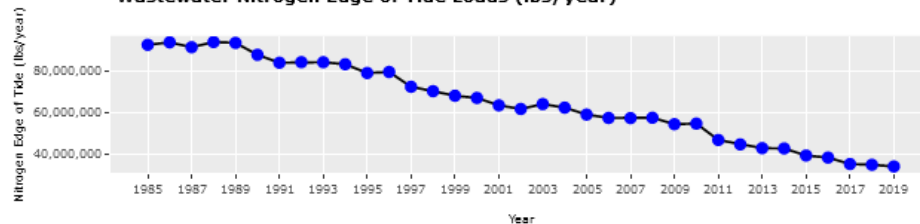


Wastewater Loads by Year

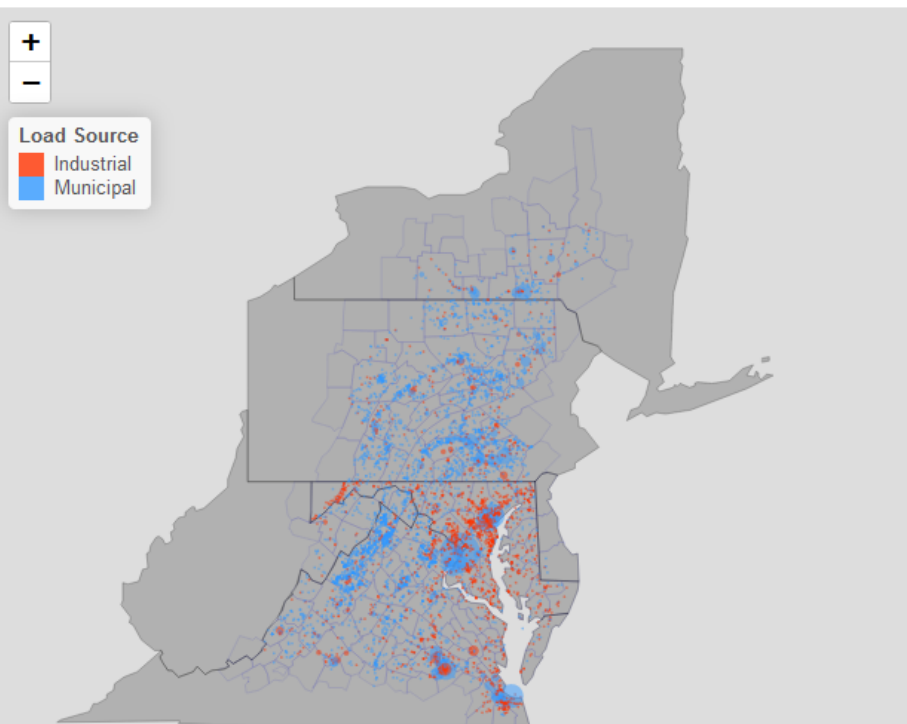
Select Pollutant

Nitrogen Edge of Tide

Wastewater Nitrogen Edge of Tide Loads (lbs/year)



Wastewater Facilities



Best Management Practices (BMPs)

These graphs are intended to provide a broad representation of change over time using data provided by the seven jurisdictions that have watersheds that drain to the Bay. The jurisdictions include New York, Pennsylvania, West Virginia, Maryland, Delaware, Virginia, and Washington, D.C.

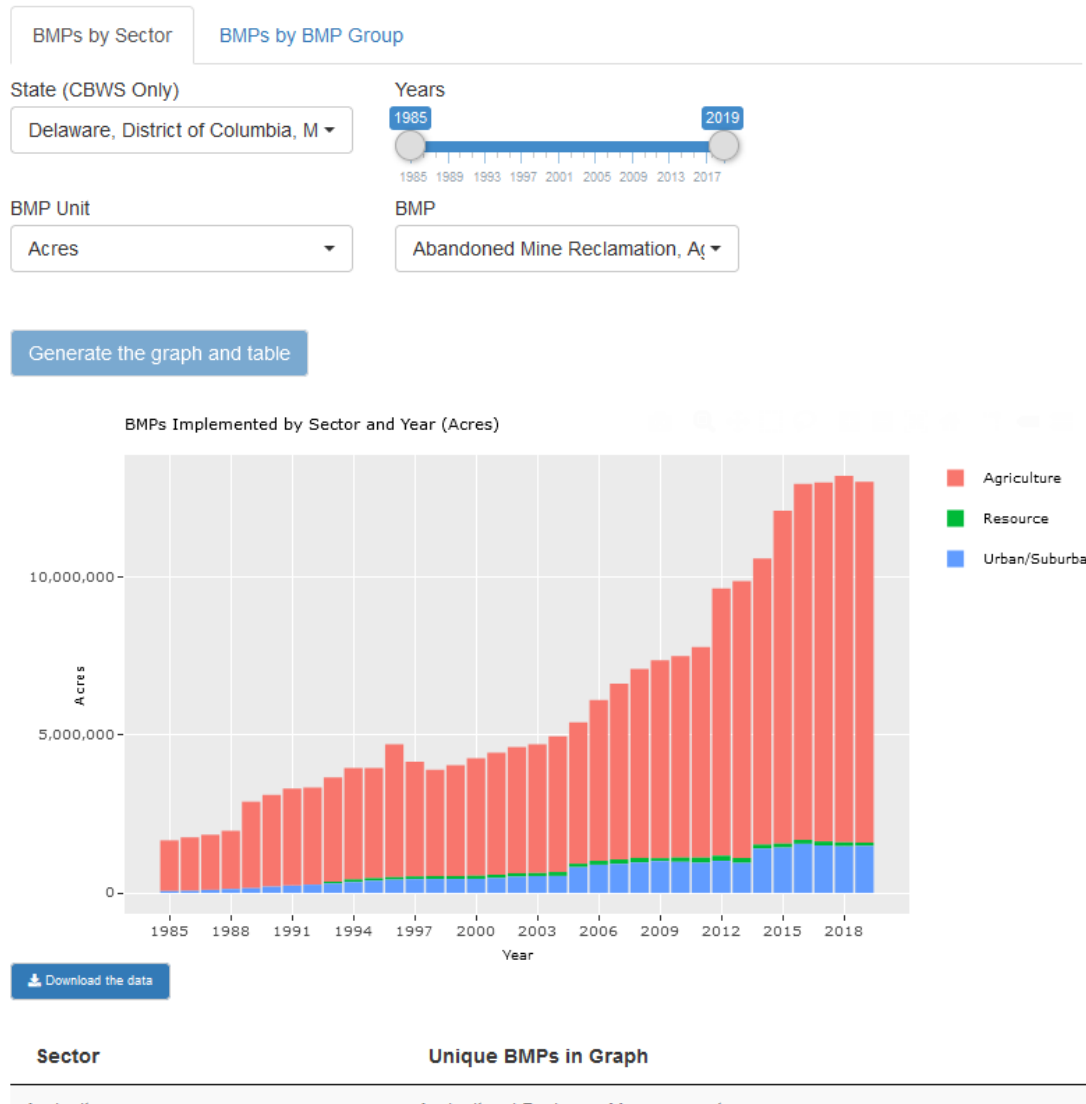
BMPs by Sector

View the amount of best management practices (BMPs) implemented by sector (i.e., Agriculture, Resource, and Urban/Suburban Practices). Select states and a range of years from 1985 through the present. Specify the unit in which the BMPs are measured. You may also choose specific BMPs if desired. In this case, the bar will stack the BMPs rather than the sectors.

BMPs by BMP Groups

View the amount of best management practices (BMPs) implemented by BMP groups. Select states and a range of years from 1985 through the present. Specify the sector and unit in which the BMPs are measured.

Note: BMPs have different levels of effects on pollutant loads. In some cases, there





Best Management Practices (BMPs)

These graphs are intended to provide a broad representation of change over time using data provided by the seven jurisdictions that have watersheds that drain to the Bay. The jurisdictions include New York, Pennsylvania, West Virginia, Maryland, Delaware, Virginia, and Washington, D.C.

BMPs by Sector

View the amount of best management practices (BMPs) implemented by sector (i.e., Agriculture, Resource, and Urban/Suburban Practices). Select states and a range of years from 1985 through the present. Specify the unit in which the BMPs are measured. You may also choose specific BMPs if desired. In this case, the bar will stack the BMPs rather than the sectors.

BMPs by BMP Groups

View the amount of best management practices (BMPs) implemented by BMP groups. Select states and a range of years from 1985 through the

[BMPs by Sector](#)[BMPs by BMP Group](#)

State (CBWS Only)

Delaware, District of Columbia, M ▾

Years

1985

2019

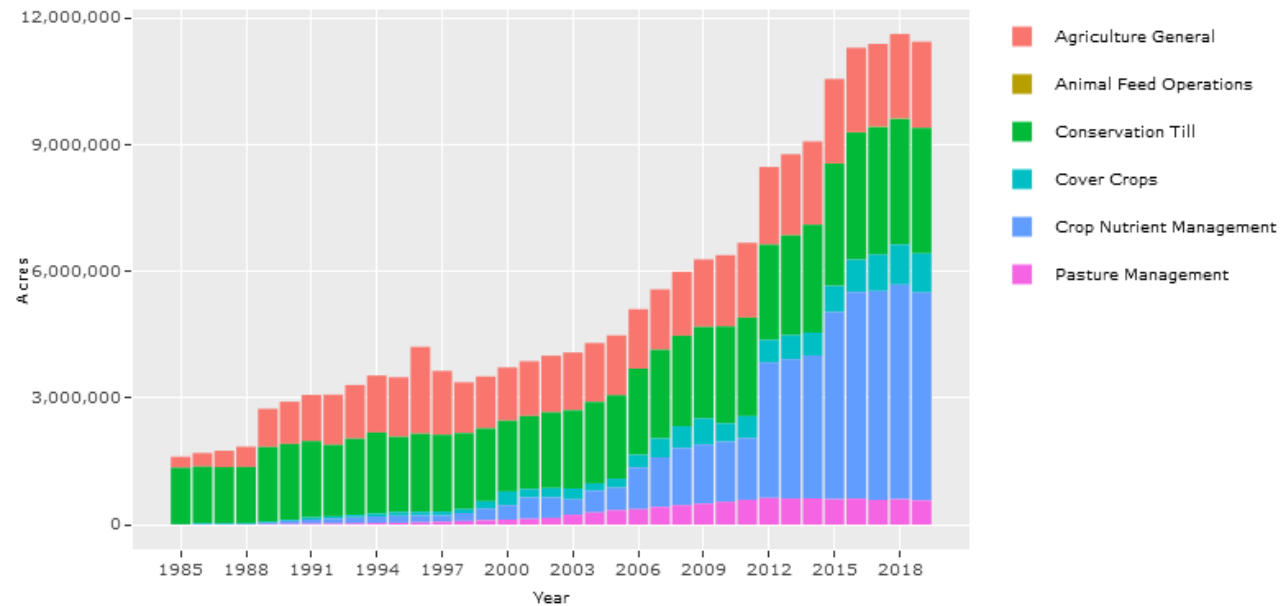
1985 1989 1993 1997 2001 2005 2009 2013 2017

BMP Sector

Agriculture, Acres ▾

[Generate the graph](#)

BMPs Implemented by BMP Group and Year (Agriculture, Acres)



Loads

Loads by Source

View nitrogen, phosphorus, or sediment edge of stream (EOS) and edge of tide (EOT) loads (lbs/year) and loading rates (lbs/acre/year) by source (i.e., Agriculture, Developed, Natural (forests, wetlands, shoreline, and streams), Non-Tidal Water). Select a range of years from 1984 through 2025.

Land Use by Load Source

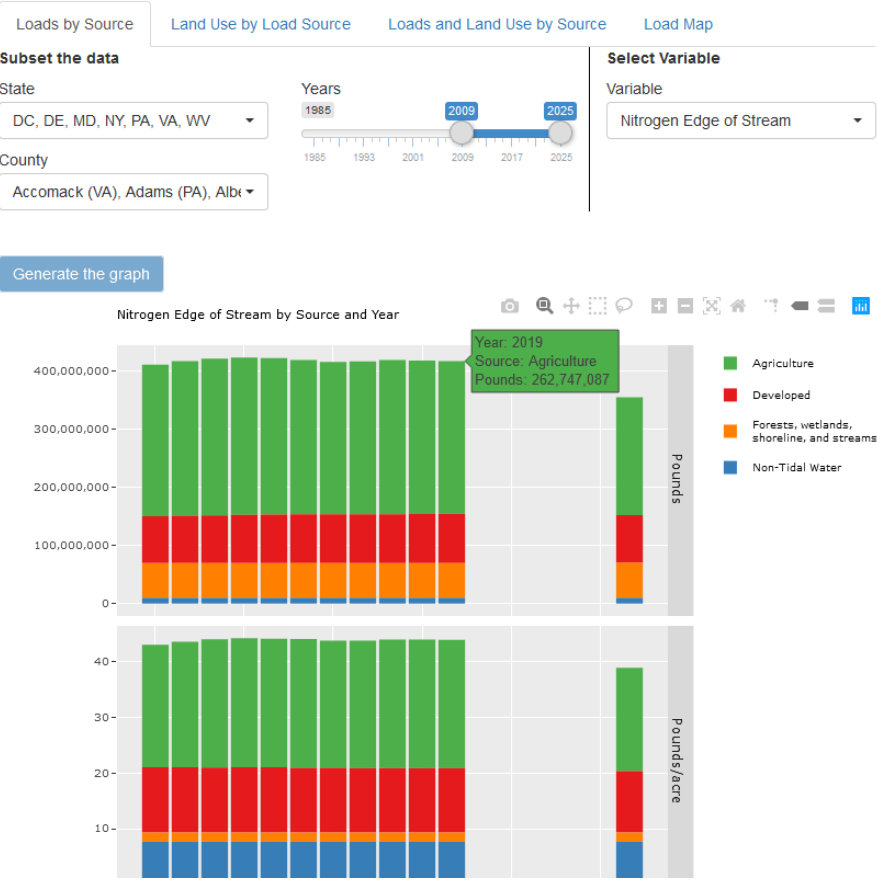
View acres by source (i.e., Agriculture, Developed, Natural (forests and wetlands), Non-Tidal Water). Select a range of years from 1984 through 2025.

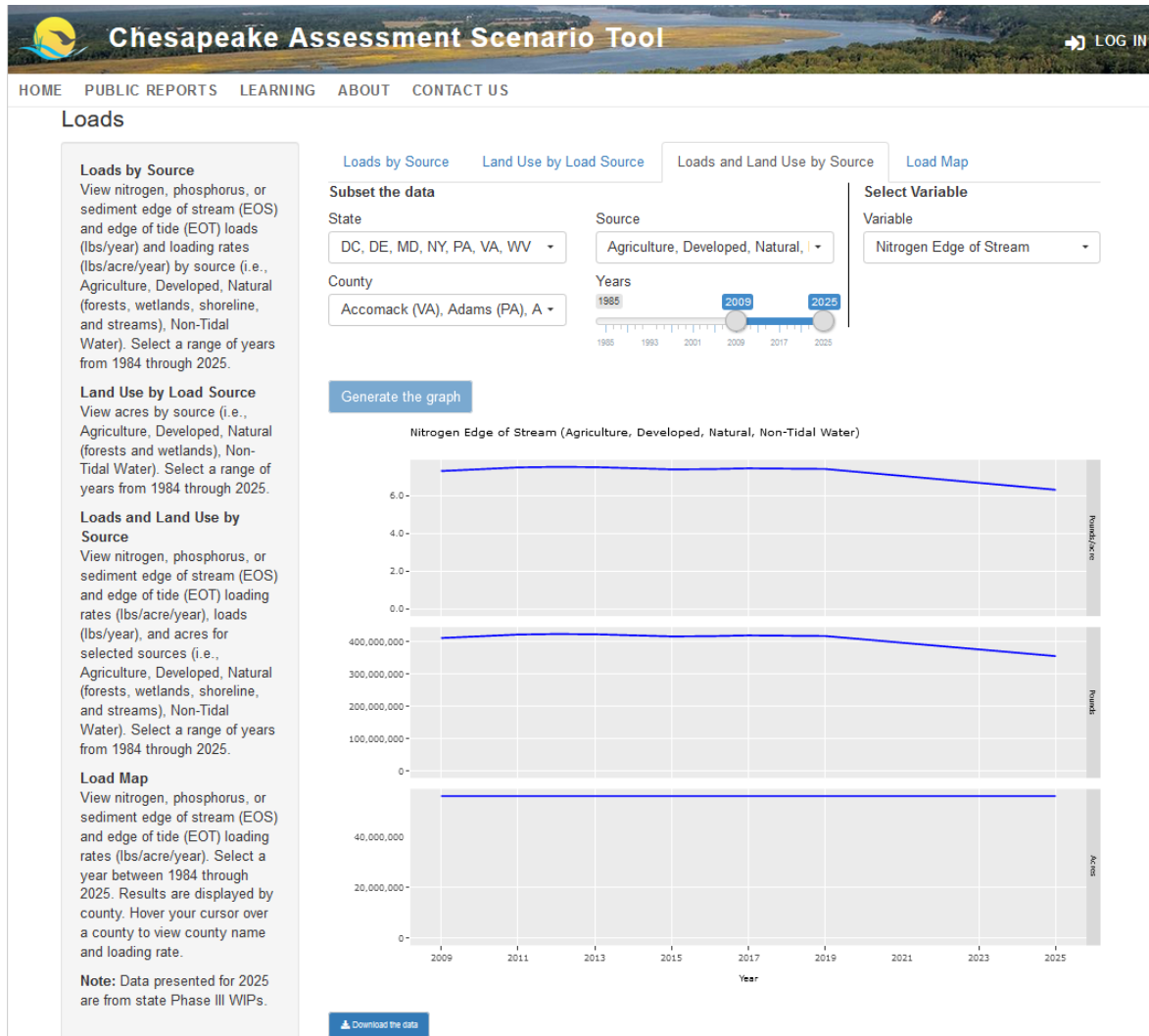
Loads and Land Use by Source

View nitrogen, phosphorus, or sediment edge of stream (EOS) and edge of tide (EOT) loading rates (lbs/acre/year), loads (lbs/year), and acres for selected sources (i.e., Agriculture, Developed, Natural (forests, wetlands, shoreline, and streams), Non-Tidal Water). Select a range of years from 1984 through 2025.

Load Map

View nitrogen, phosphorus, or sediment edge of stream (EOS) and edge of tide (EOT) loading rates (lbs/acre/year). Select a year between 1984 through 2025. Results are displayed by county.





Loads by Source

View nitrogen, phosphorus, or sediment edge of stream (EOS) and edge of tide (EOT) loads (lbs/year) and loading rates (lbs/acre/year) by source (i.e., Agriculture, Developed, Natural (forests, wetlands, shoreline, and streams), Non-Tidal Water). Select a range of years from 1984 through 2025.

Land Use by Load Source

View acres by source (i.e., Agriculture, Developed, Natural (forests and wetlands), Non-Tidal Water). Select a range of years from 1984 through 2025.

Loads and Land Use by Source

View nitrogen, phosphorus, or sediment edge of stream (EOS) and edge of tide (EOT) loading rates (lbs/acre/year), loads (lbs/year), and acres for selected sources (i.e., Agriculture, Developed, Natural (forests, wetlands, shoreline, and streams), Non-Tidal Water). Select a range of years from 1984 through 2025.

Load Map

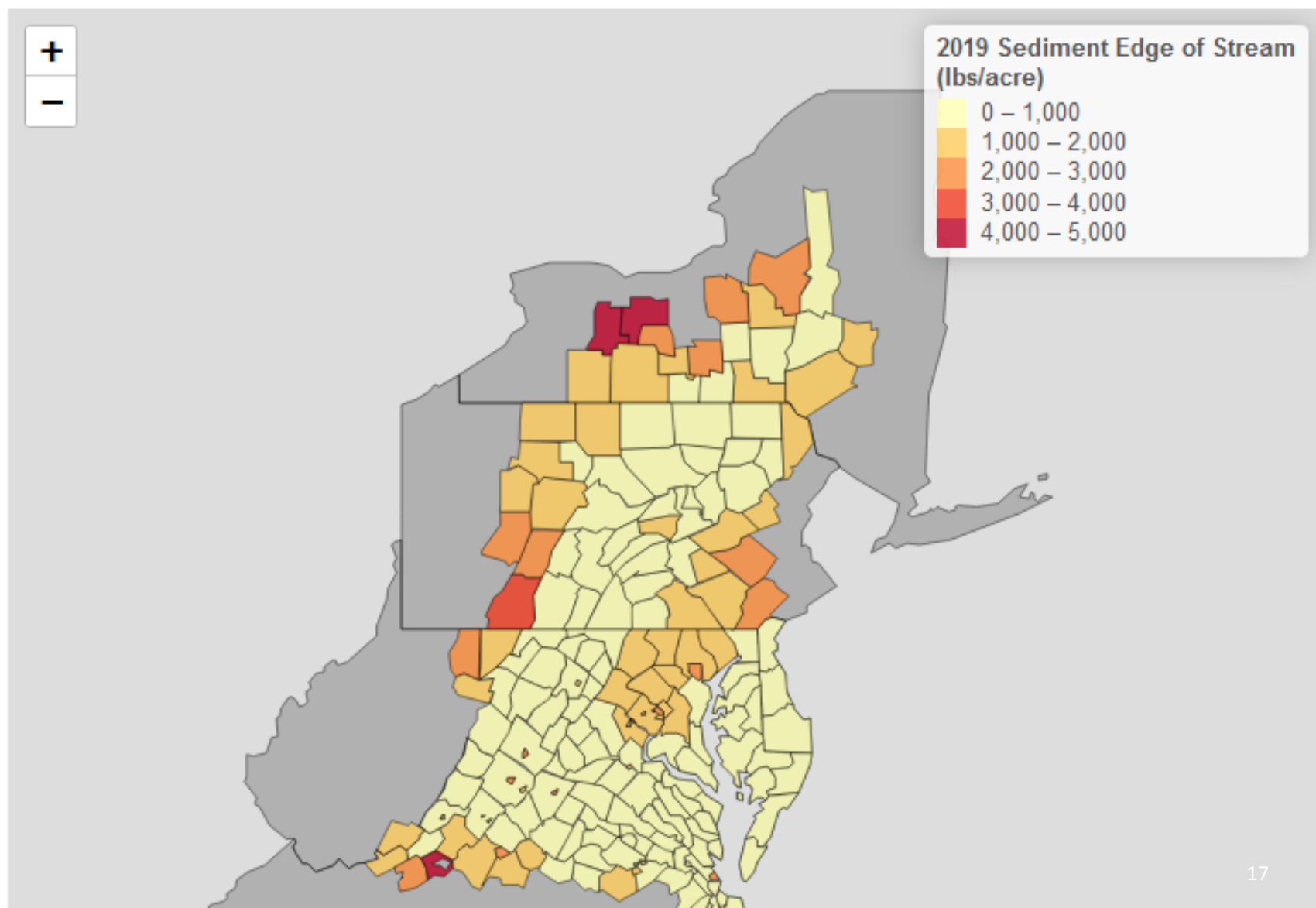
[Loads by Source](#)[Land Use by Load Source](#)[Loads and Land Use by Source](#)[Load Map](#)

Year

2019

Nutrient

Sediment Edge of Stream



Which BMPs are most likely to result in a water-quality benefit?

This question can be answered with CAST

CAST is a free, online nitrogen, phosphorus and sediment load estimator tool that streamlines environmental planning.

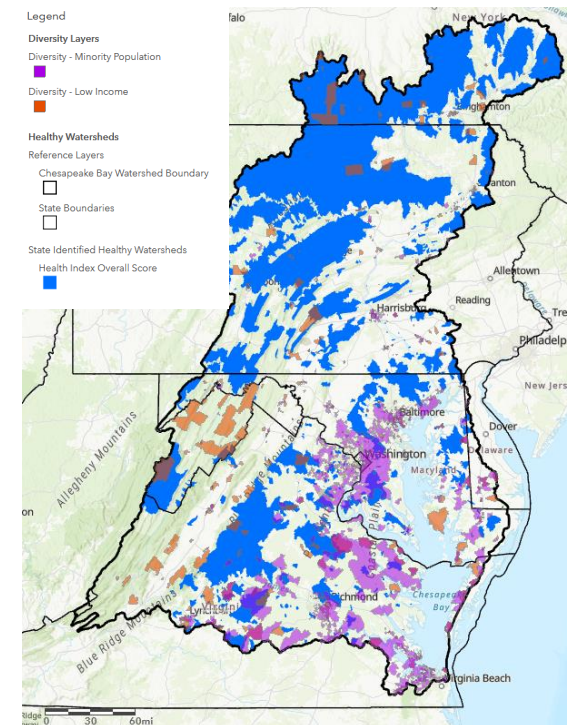
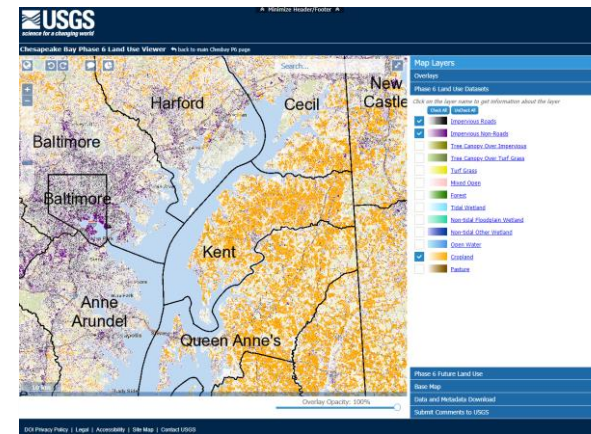
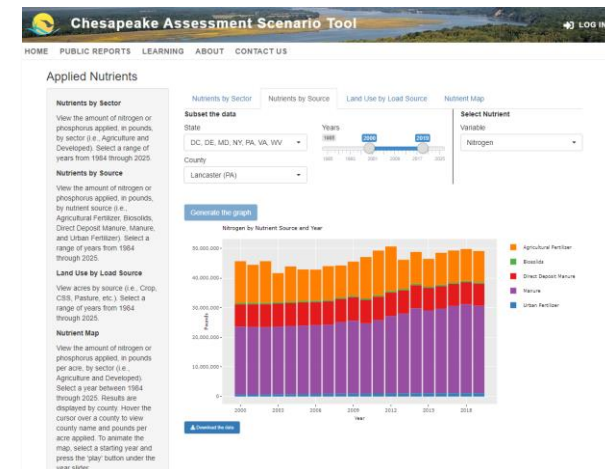
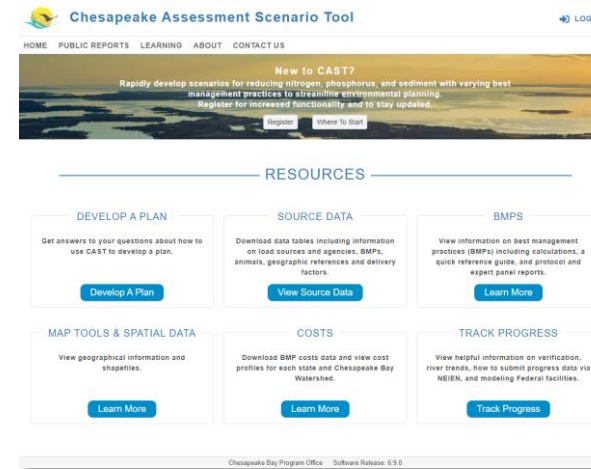
- Explore nutrient sources, application rates, and land use patterns:
cast.chesapeakebay.net/TrendsOverTime/NutrientsApplied
- Explore BMP implementation patterns by source sector and geography: cast.chesapeakebay.net/TrendsOverTime/BMPs
- Explore BMP cost profiles:
cast.chesapeakebay.net/Documentation/CostProfiles

The **Chesapeake Bay Phase 6 Land Use Viewer** can be used to explore land use patterns throughout the watershed is accessible from:

<https://cast.chesapeakebay.net/Documentation/MapToolSpatialData>

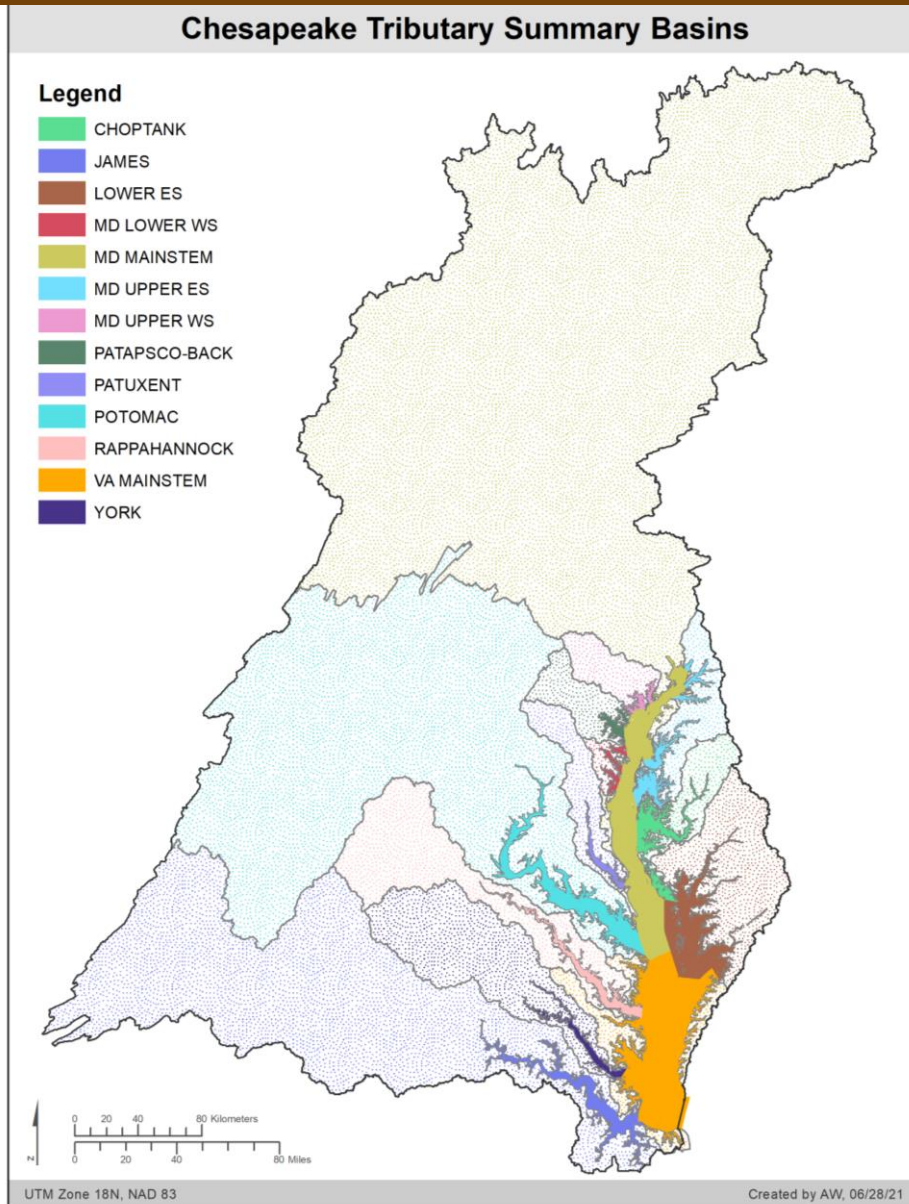
The **Chesapeake Bay Watershed Model Phase 6 Map Viewer** includes a variety of data to guide management, including information on nutrient inputs, healthy watersheds, and aquatic resources is accessible from:

<https://cast.chesapeakebay.net/Documentation/MapToolSpatialData>



Above: Screenshots of online tools and resources that can help guide effective watershed management.

12 Tributary Trend Summaries



- **Maryland Mainstem** (*The 5 Chesapeake Bay mainstem segments within the MD state boundary. Drainage basins include the Susquehanna River and upper Chesapeake shorelines*)
- **Maryland Upper Eastern Shore** (*The Northeast, Bohemia, Elk, Back Creek, Sassafras, and Chester Rivers, the C&D Canal, and Eastern Bay*)
- **Choptank** (*the Choptank, Little Choptank, and Honga*)
- **Maryland Upper Western Shore** (*Bush, Gunpowder, Middle Rivers*)
- **Patapsco & Back Rivers**
- **Patuxent** (*includes the Western Branch tributary*)
- **Potomac**
- **Rappahannock** (*includes the Corrotoman tributary*)
- **York** (*includes the Mattaponi and Pamunkey tributaries*)
- **James** (*includes the Appomattox, Chickahominy, and Elizabeth tributaries*)
- **Lower E. Shore** (*includes the Nanticoke, Manokin, Wicomico, Big Annemessex, and Pocomoke rivers & Tangier Sound*)
- **Virginia Mainstem** (*no summary but Appendices are provided*)

Questions the tributary summaries can answer

1. Have water quality indicators in my river been improving or degrading over time?
2. How have landscape factors that drive water quality change in my watershed changed over time?
3. What clues do they provide that might explain observed water quality change (or lack of change)?
4. What should I target to turn a degrading trend around or maintain improvements for future water quality and living resource conditions?
5. What should scientists focus our analyses on to provide better answers in the future?

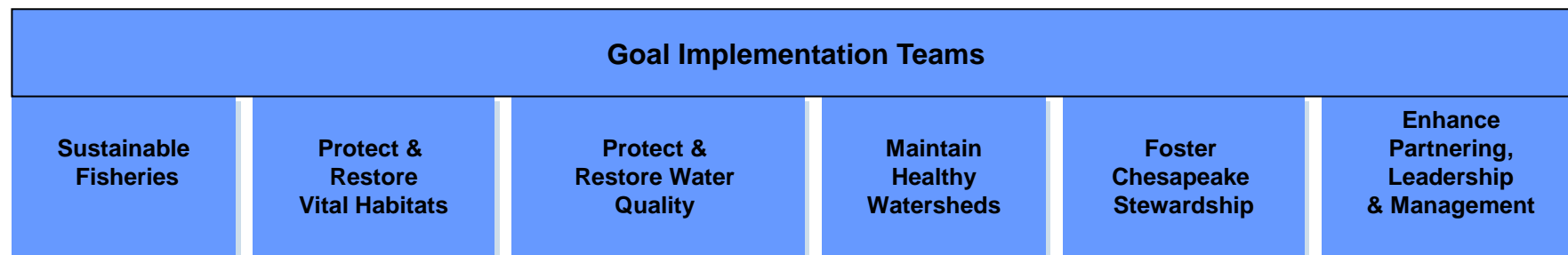
Questions

Current

- What are the most commonly used BMPs?
- What has BMP implementation changed over time?
- What are the lowest cost, most effective BMPs?

Future

- **BMP Benefits and Eco-System Services**
- **Spatially Explicit CAST**
- **Transparency in BMP annual reporting**



Habitat Outcomes

- Black Duck
- Brook Trout
- Fish Passage
- Forest Buffers
- SAV
- Stream Health
- Tree Canopy
- Wetlands



The responses to these questions can inform future actions and programs

Questions

- What are the dominant BMPs where Chessie BIBI scores have improved over time?
- How has land use changed over time where scores have in/decreased?
- What has the level of financial investment been in watersheds with increasing Chessie BIBI scores?

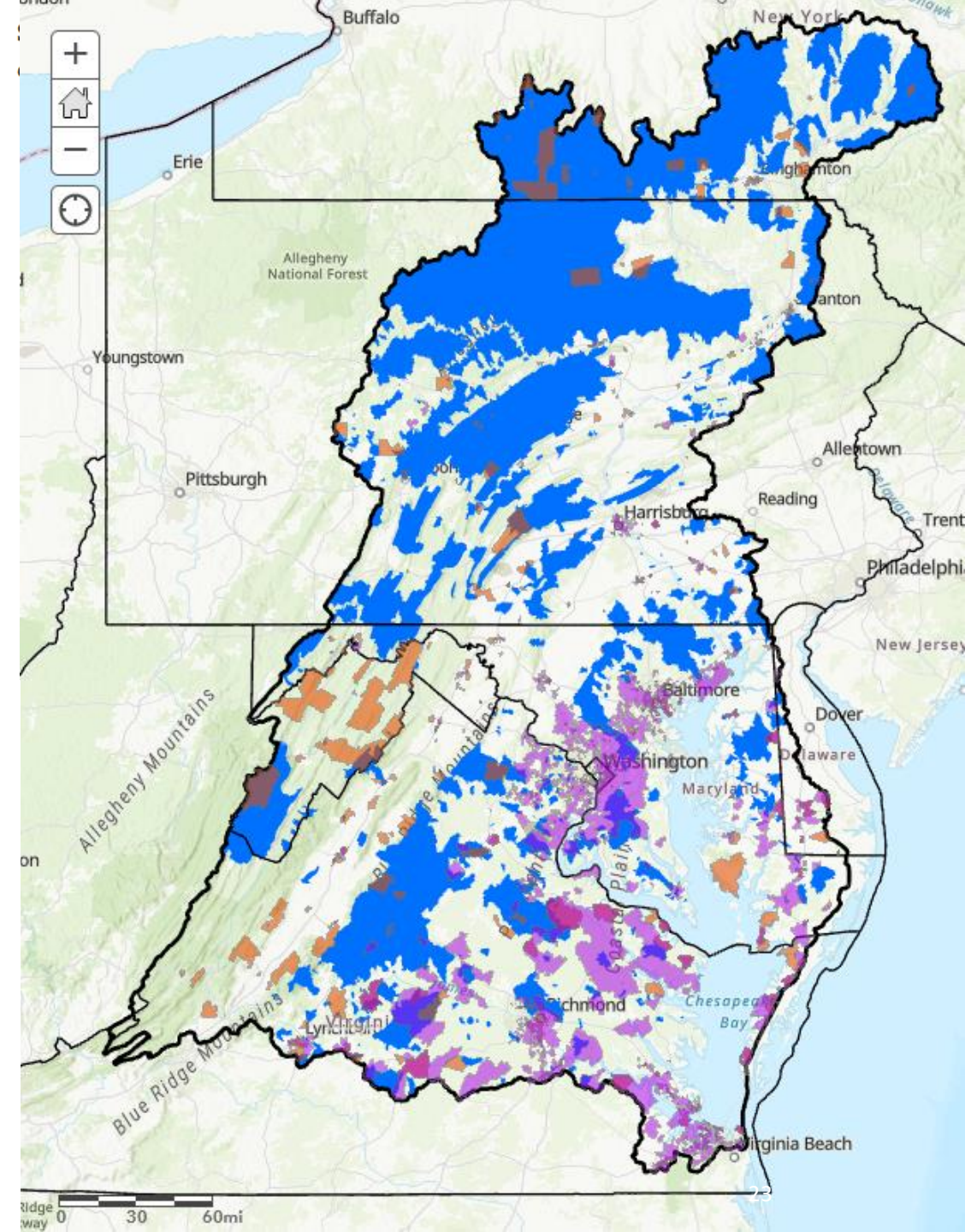
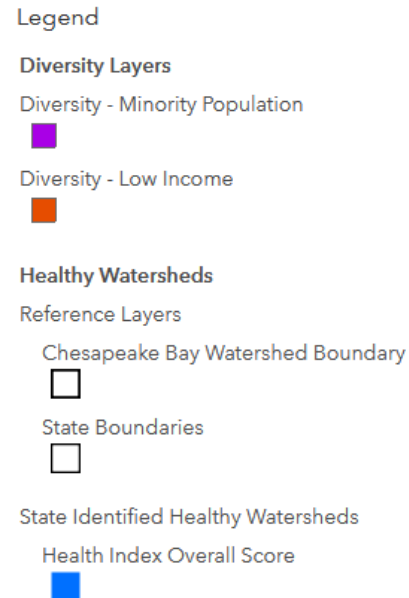
What is needed to add Stream Health to CAST

Research needed—Chessie BIBI for a 10+ year timespan

Cross-GIT map use

- Include Diversity Layers

BMPs



Trade-offs for some outcomes

Identify habitat restoration priorities

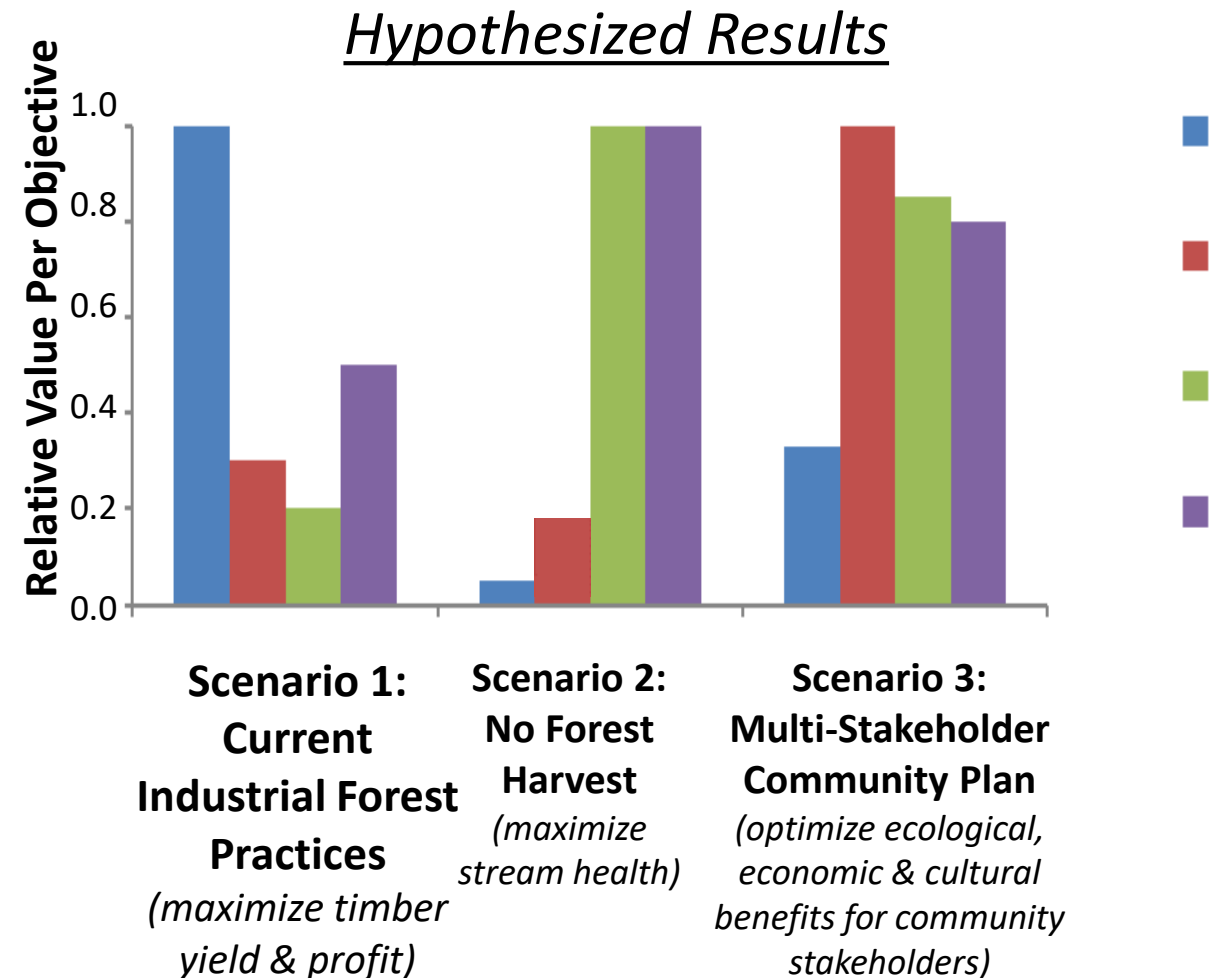
- Stream health, woody debris, forest buffers

Determine how much restoration and where

Scenarios for balancing diverse objectives

- Stream health, black ducks, timber, local jobs, recreation, sport fishing

Trade-offs for Alternative Scenarios



Link BMP Planning to Spatially Explicit Land Use



+ Add BMP

Add BMP

*Required field

Agency * ⓘ

BMP * ⓘ

Secondary BMP * ⓘ

Unit * ⓘ

Amount * ⓘ

Add Cancel

Benefit to Restoration Professionals

Enhance CAST users' ability to improve water quality and focus measured outcomes to smaller geographic scales

Increase understanding of CAST by non-technical people, which will expand usage of CAST to conservation project members, farmers, and farm advisors

Negate the need for urban planners to convey their site-specific geographic information out of CAST and into separate spreadsheet tools that produce inconsistent results

Facilitate incorporation of Cross-GIT mapping layers like brook trout, toxics, and BIPOC populations

Connect co-benefits and eco-system services to restoration planning

Timeline and Required Investment

It is expected that this could be done in about 2 years.

Costs are estimated to be about \$300,000.

The capacity to undertake this work does not currently exist within the Chesapeake Bay Program Development Team.

Previous experience with modelers at Drexel University suggests that they would have the experience and knowledge to develop a spatially explicit version of CAST. They would provide a supplement to our existing Development Team to ensure that usability and CAST user experience would be consistent across the products.

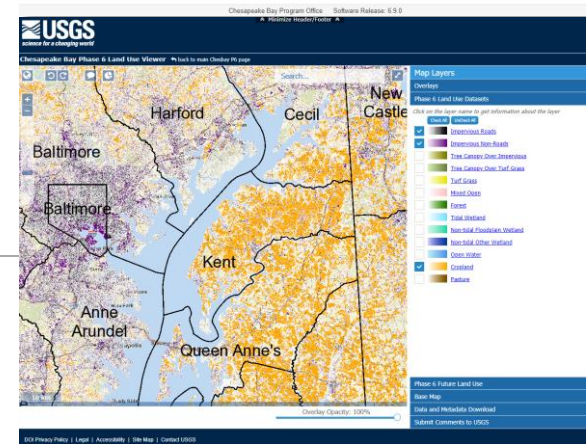
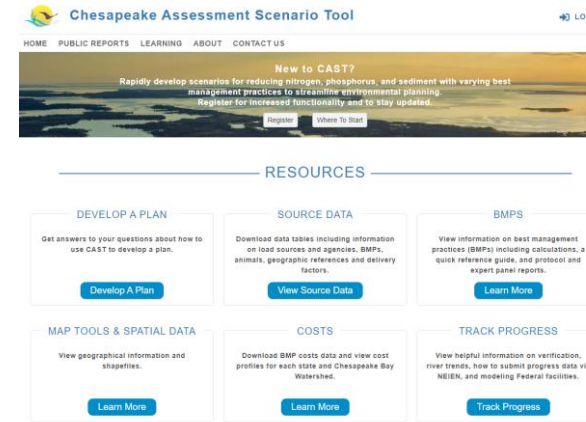
Integrating the land use, non-water quality benefits and ecosystem services with the assessment functionality and official progress scenarios

This question can be answered with CAST
CAST streamlines environmental planning.

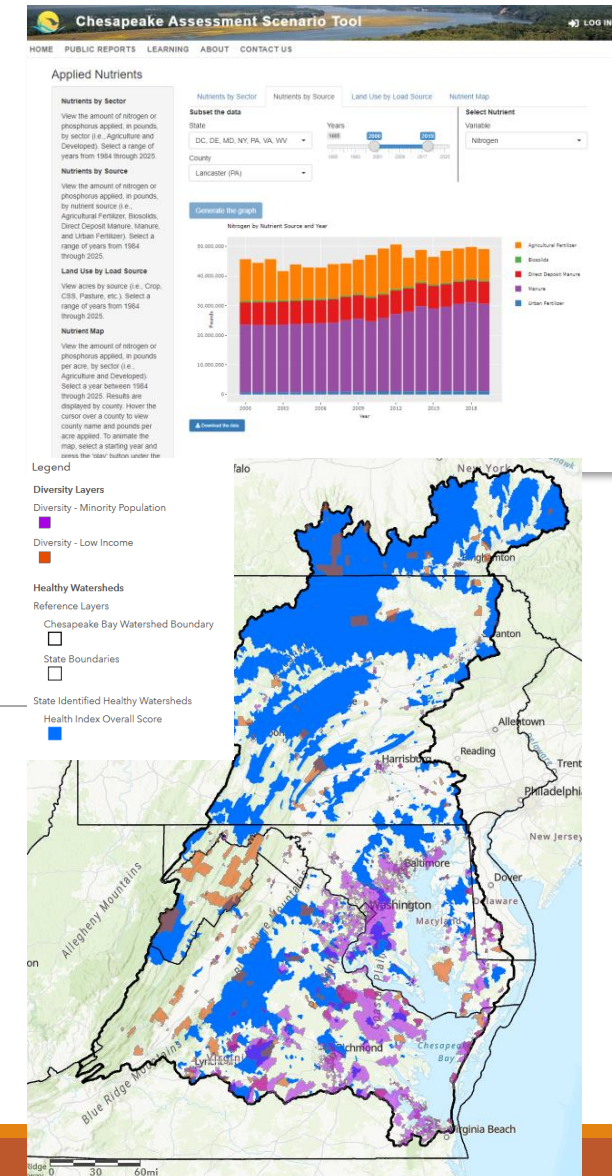
- Explore nutrient sources, application rates, and land use patterns:
cast.chesapeakebay.net/TrendsOverTime/NutrientsApplied
- Explore BMP implementation patterns by source sector and geography: cast.chesapeakebay.net/TrendsOverTime/BMPs
- Explore BMP cost profiles:
cast.chesapeakebay.net/Documentation/CostProfiles

The **Chesapeake Bay Phase 6 Land Use Viewer** can be used to explore land use patterns throughout the watershed is accessible from:
<https://cast.chesapeakebay.net/Documentation/MapToolSpatialData>

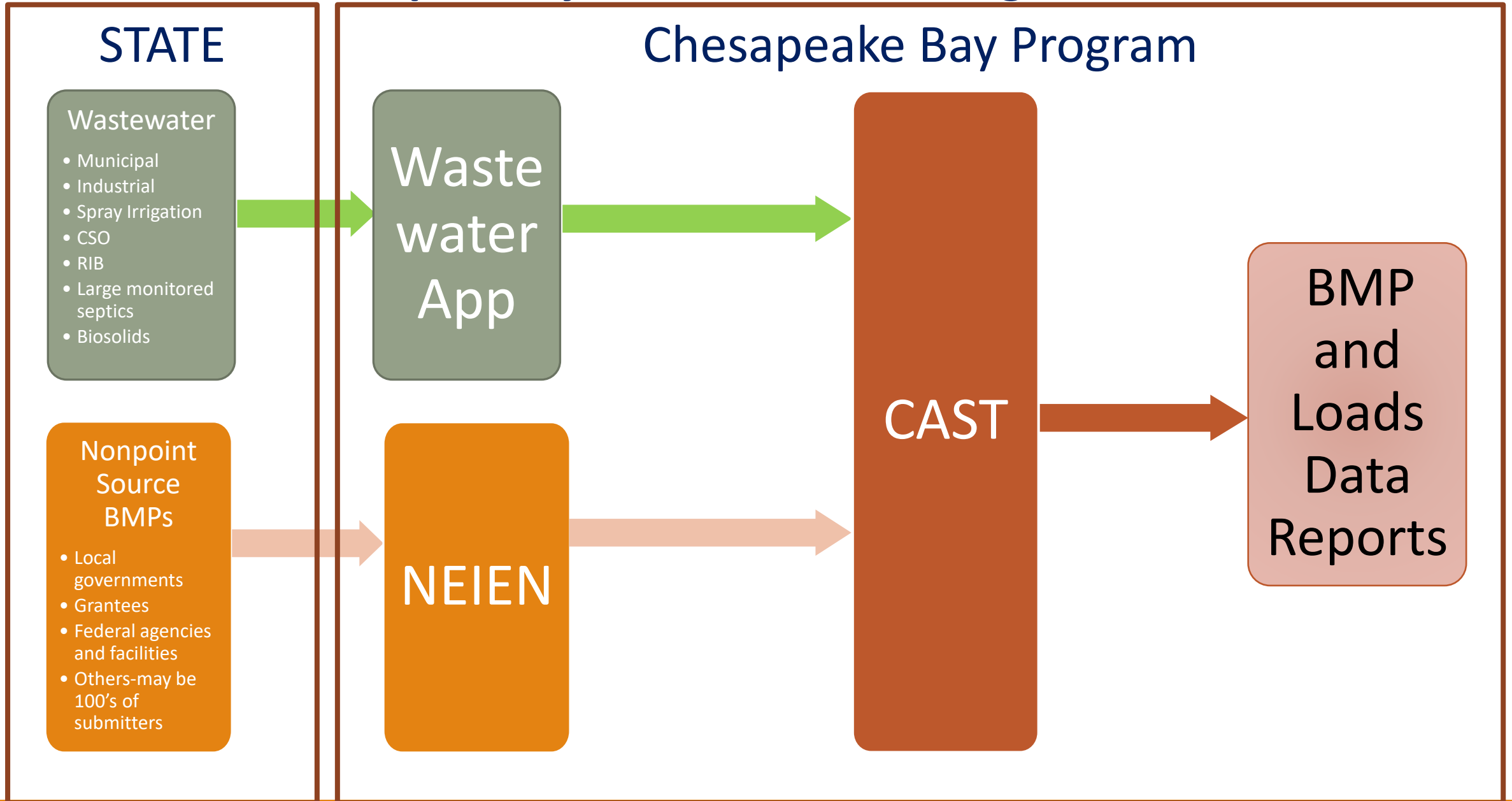
The **Chesapeake Bay Watershed Model Phase 6 Map Viewer** includes a variety of data to guide management, including information on nutrient inputs, healthy watersheds, and aquatic resources is accessible from:
<https://cast.chesapeakebay.net/Documentation/MapToolSpatialData>



Above: Screenshots of online tools and resources that can help guide effective watershed management.



Transparency in NEIEN/CAST Progress data



AutoSaveOff

NEIEN BMP Errors

Search

Olivia Devereux

OD

FileHomeInsertPage LayoutFormulasDataReviewViewHelpACROBATTeam

B16

2955

	A	B	C	D	E	F	G	H	
1	ERROR_MESSAGE	submission_id	SUBMISSION_DATE	transaction_id	YEAR	state_unique_id	agency_code	state_code	bmp_name
2	The status of the BMP is Draft, Retired or NA.	2955.00000	11/18/2020 10:27:48	_33efa163-37aa-436a-9cff-6abf9ce57c8e	2010.00000	MTD-2011-000038624	2017125-116	VA	Proprietary
3	The status of the BMP is Draft, Retired or NA.	2955.00000	11/18/2020 10:27:48	_33efa163-37aa-436a-9cff-6abf9ce57c8e	2010.00000	MTD-2011-000038623	2017125-116	VA	Proprietary

AutoSaveOff

NEIEN Inspection Report

Olivia Devereux

OD

FileHomeInsertPage LayoutFormulasDataReviewViewHelpACROBATTeam

B7091

VDH-2008-000011751

AutoSaveOff

CAST Land BMP Submission Errors

Olivia Devereux

OD

FileHomeInsertPage LayoutFormulasDataReviewViewHelpACROBATTeam

B7091

VDH-2008-000011751

	A	B	C	D	E	F	G	
1	ERROR_MESSAGE	state unique id	agency code	state code	bmp name	life span	GEOGRAPHY NAME	im

AutoSaveOff

CAST Credited v. Submitted Report

Olivia Devereux

OD

FileHomeInsertPage LayoutFormulasDataReviewViewHelpACROBATTeam

A1

ErrorMessage

	A	B	C	D	E	F	G	H	I	J	K	L	M	N	O	P	Q	R
1	StateAbbr	Geograph	Geograph	Agency	BMPShort	BMP	BMPTYPE	Unit	Sector	FromLoad	ToLoadSo	AmountSu	AmountBa	AmountNc	AmountCr	Excess	TotalAmou	Cost
2	MD	md	Maryland	Departmen	impurred	Impervious	Landuse C	Acres	Developed	Non-Regul	Non-Regul	16.857	0.055	16.802	16.802	0.000	16.857	#####
3	MD	md	Maryland	Departmen	impurred	Impervious	Landuse C	Acres	Developed	Non-Regul	Non-Regul	60.664	0.556	60.108	60.108	0.000	60.664	#####
4	MD	md	Maryland	Departmen	impurred	Impervious	Landuse C	Acres	Developed	Non-Regul	Non-Regul	7.178	0.071	7.107	7.107	0.000	7.178	#####
5	MD	md	Maryland	Departmen	impurred	Impervious	Landuse C	Acres	Developed	MS4 Road	MS4 Turf C	0.180	0.006	0.174	0.174	0.000	0.180	#####
6	MD	md	Maryland	Departmen	impurred	Impervious	Landuse C	Acres	Developed	MS4 Buildi	MS4 Turf C	0.041	0.002	0.039	0.039	0.000	0.041	2350.879
7	MD	md	Maryland	Departmen	impurred	Impervious	Landuse C	Acres	Developed	MS4 Tree	MS4 Tree C	0.024	0.001	0.023	0.023	0.000	0.024	1356.906
8	MD	md	Maryland	Departmen	impurred	Impervious	Landuse C	Acres	Developed	CSS Road	CSS Road	0.000	0.000	0.000	0.000	0.000	0.000	0.000
9	MD	md	Maryland	Departmen	impurred	Impervious	Landuse C	Acres	Developed	CSS Buildi	CSS Buildi	0.000	0.000	0.000	0.000	0.000	0.000	0.000
10	MD	md	Maryland	Departmen	impurred	Impervious	Landuse C	Acres	Developed	CSS Tree	CSS Tree	0.000	0.000	0.000	0.000	0.000	0.000	0.000
11	MD	md	Maryland	Departmen	urbstrmres	Urban Stre	Pound Rec	Feet	Natural	Stream Be	Stream Be	#####	0.000	#####	#####	0.000	#####	#####

AutoSaveOff

CAST Credited v. Submitted Report

Olivia Devereux

OD

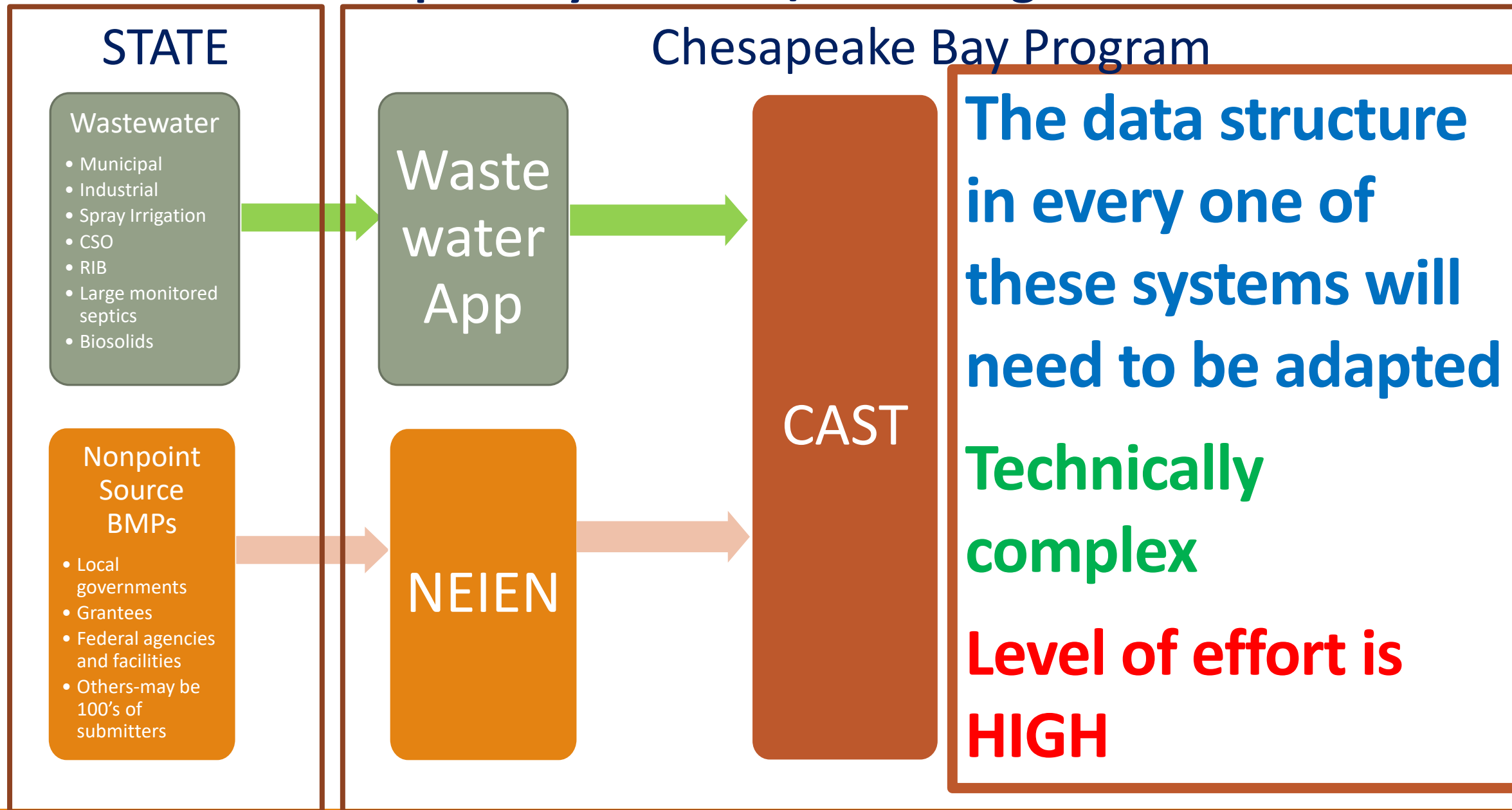
FileHomeInsertPage LayoutFormulasDataReviewViewHelpACROBATTeam

A1

StateAbbreviation

	A	B	C	D	E	F	G	H	I	J	K	L	M	N	O	P	Q	R
1	StateAbbr	Geograph	Geograph	Agency	BMPShort	BMP	BMPTYPE	Unit	Sector	FromLoad	ToLoadSo	AmountSu	AmountBa	AmountNc	AmountCr	Excess	TotalAmou	Cost
2	MD	md	Maryland	Departmen	impurred	Impervious	Landuse C	Acres	Developed	Non-Regul	Non-Regul	16.857	0.055	16.802	16.802	0.000	16.857	#####
3	MD	md	Maryland	Departmen	impurred	Impervious	Landuse C	Acres	Developed	Non-Regul	Non-Regul	60.664	0.556	60.108	60.108	0.000	60.664	#####
4	MD	md	Maryland	Departmen	impurred	Impervious	Landuse C	Acres	Developed	Non-Regul	Non-Regul	7.178	0.071	7.107	7.107	0.000	7.178	#####
5	MD	md	Maryland	Departmen	impurred	Impervious	Landuse C	Acres	Developed	MS4 Road	MS4 Turf C	0.180	0.006	0.174	0.174	0.000	0.180	#####
6	MD	md	Maryland	Departmen	impurred	Impervious	Landuse C	Acres	Developed	MS4 Buildi	MS4 Turf C	0.041	0.002	0.039	0.039	0.000	0.041	2350.879
7	MD	md	Maryland	Departmen	impurred	Impervious	Landuse C	Acres	Developed	MS4 Tree	MS4 Tree C	0.024	0.001	0.023	0.023	0.000	0.024	1356.906
8	MD	md	Maryland	Departmen	impurred	Impervious	Landuse C	Acres	Developed	CSS Road	CSS Road	0.000	0.000	0.000	0.000	0.000	0.000	0.000
9	MD	md	Maryland	Departmen	impurred	Impervious	Landuse C	Acres	Developed	CSS Buildi	CSS Buildi	0.000	0.000	0.000	0.000	0.000	0.000	0.000
10	MD	md	Maryland	Departmen	impurred	Impervious	Landuse C	Acres	Developed	CSS Tree	CSS Tree	0.000	0.000	0.000	0.000	0.000	0.000	0.000
11	MD	md	Maryland	Departmen	urbstrmres	Urban Stre	Pound Rec	Feet	Natural	Stream Be	Stream Be	#####	0.000	#####	#####	0.000	#####	#####

Transparency in NEIEN/CAST Progress data



Summary

Goals

- Provide federal, state, and local partners and stakeholders **tools and information** for ecological improvement in the Bay
- **Quantify** the link between BMPs and ecological conditions

Strategy for making changes

- Adapt CAST to **include additional benefits** (low-high)
- Add **spatially-explicit land use** for planning (medium)
- **Transparency in NEIEN/CAST progress BMP data** (high)
- Redesign the **interface** (medium)

Near-term goals

- Continue working with Goal Teams to make CAST an effective tool to **show comprehensive recovery solutions** across habitats and scales
- Identify **data gaps**

Contaminated sites → Revitalized communities
Citizen stewardship, Diversity, Local Leadership





Questions?