

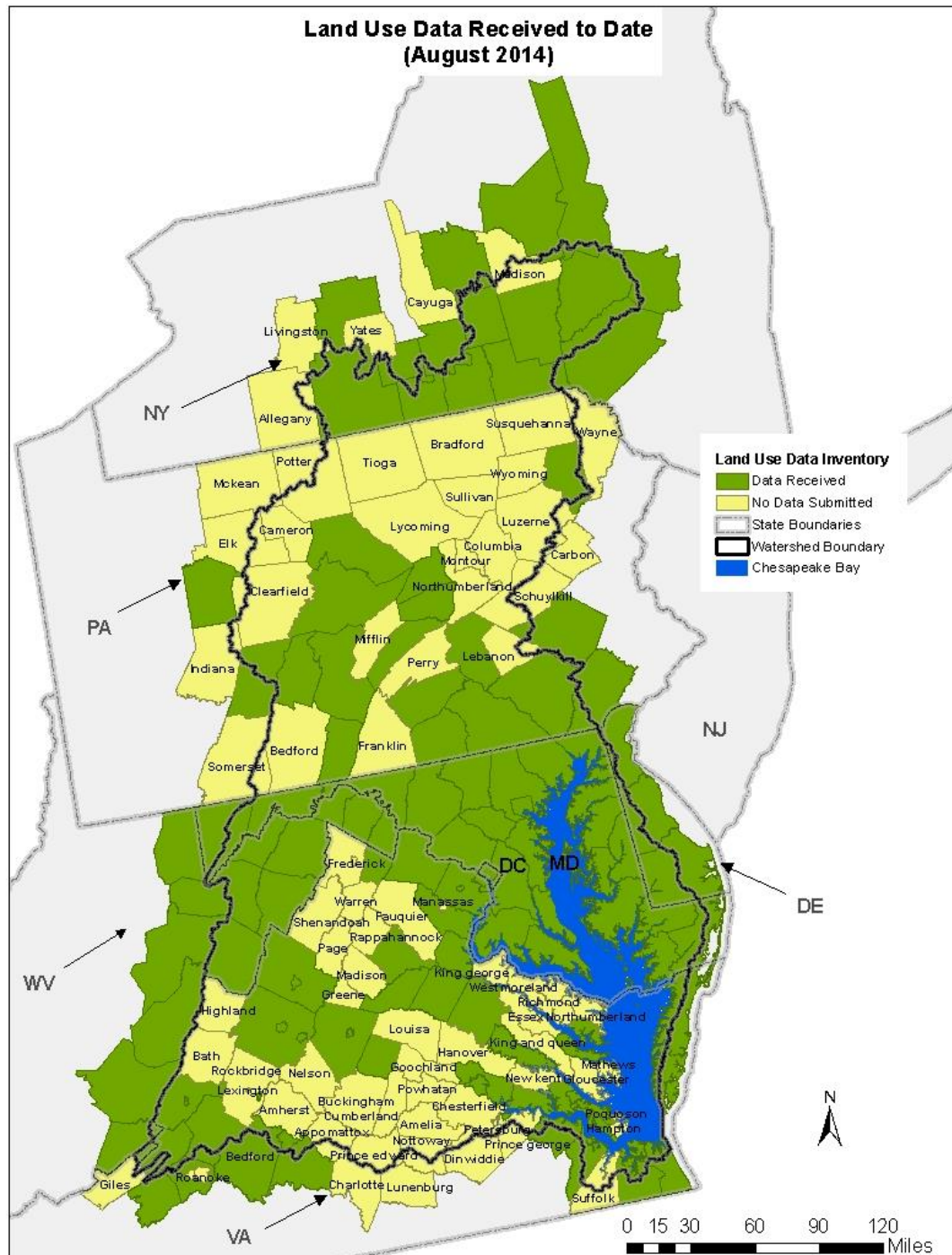
Phase 6 Land Use Data Status Update

Peter Claggett

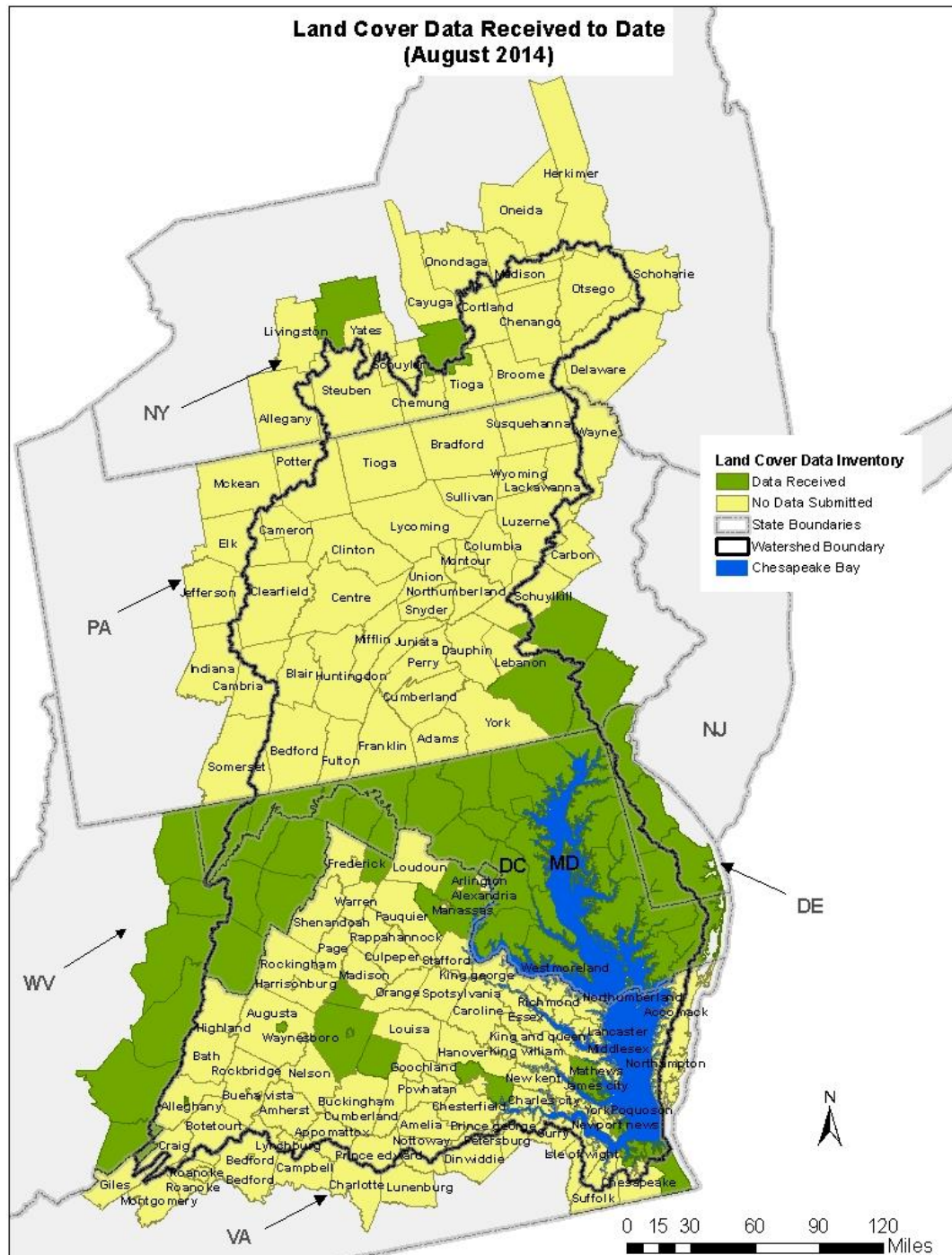
September 8, 2014
Water Quality GIT Call

U.S. Department of the Interior
U.S. Geological Survey

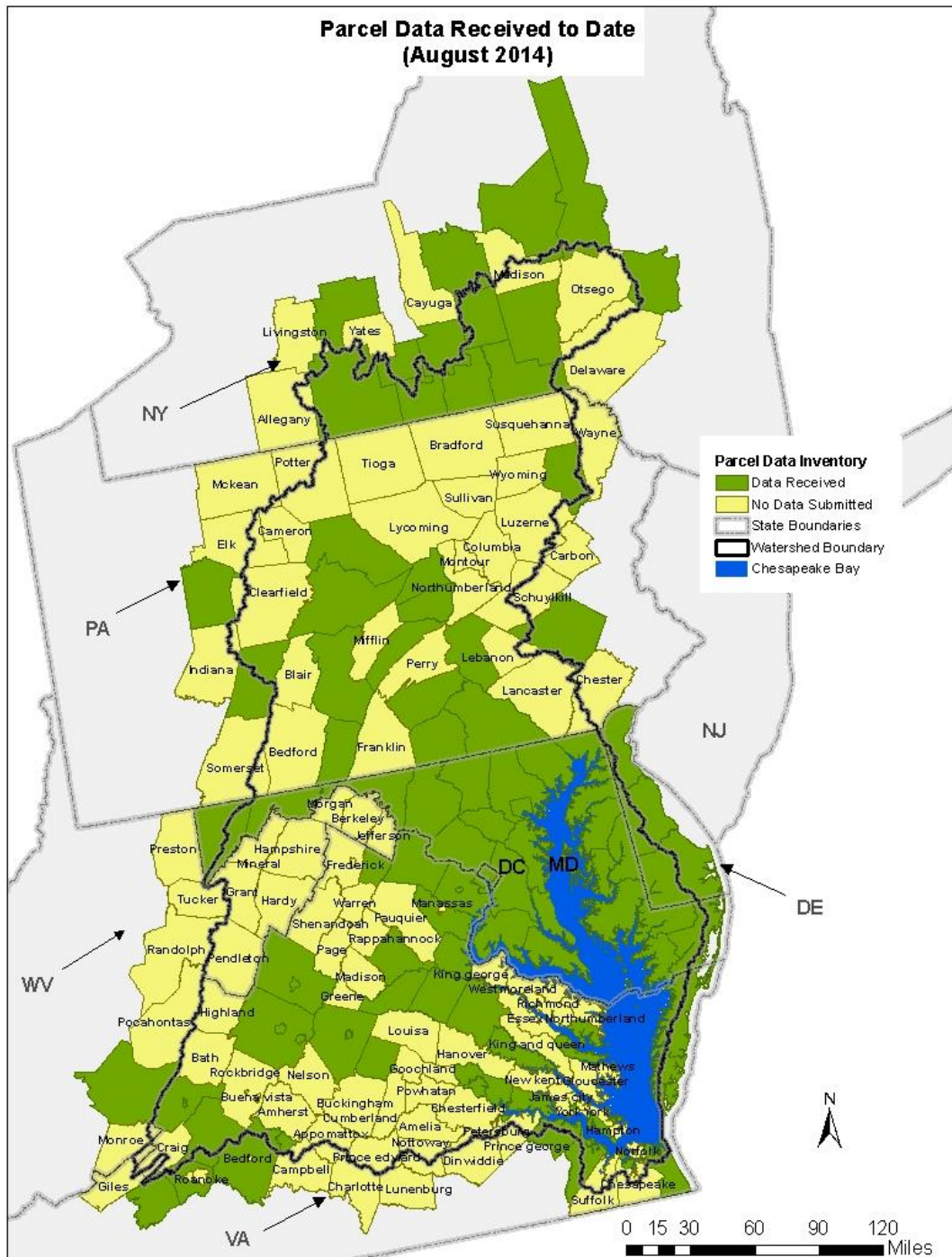
Land Use Data Received to Date (August 2014)



Land Cover Data Received to Date (August 2014)



Parcel Data Received to Date (August 2014)



Proposed Developed (aka “urban”) Land Uses

<u>1 Developed</u>		
	1.1 Impervious	
		1.1.1 Roads
		1.1.2 Buildings, parking lots, etc.
	1.2 Pervious	
		1.2.1 Turf grass
		1.2.2 Tree canopy
		1.2.3 Open space
	1.3 Construction	
	1.4 Extractive	

<u>2 Agriculture</u>			
	2.1 Commodity crops		
		2.1.1 Corn	
			Grain (dbl. cropped vs fall fallow)
			Silage (dbl. cropped vs fall fallow)
		2.1.2 Soybeans	
			Fall fallow
			Double cropped
		2.1.3 Small grains	
			Fall fallow
			Forage
	2.2 Hay and Legume forage		
		2.2.1 Alfalfa and other legumes	
		2.2.2 Non-legume forage	
		2.2.3 Pasture and pastured cropland	
	2.3 Speciality & Other crops		
		2.3.1 Vines	
			High vs medium vs low input
		2.3.2 Low cover	
			High vs medium vs low input
		2.3.3 High cover	
			High vs medium vs low input
	2.4 Farmsteads		
		2.4.1 Animal	
			Impervious vs Pervious
		2.4.2 Non-animal	
			Impervious vs Pervious

Proposed Natural Land Uses

<u>3 Natural</u>		
	3.1 Forests	
		3.1.1 Forest (undisturbed)
		3.1.3 Harvested
		3.1.4 Disturbed (insect, fire)
	3.2 Scrub/shrub/grass	
	3.3 Wetlands	
		3.3.1 Tidal emergent
		3.3.2 Fresh emergent
		3.3.3 Non-tidal woody
	3.4 Water (non-tidal)	

Proposed Sources and Overlays

Phase 6 Sources:	
<u>4 Wastewater</u>	
	4.1 Population on Sewer
	4.2 Population on Septic
<u>5 Degraded stream corridors</u>	
	5.1 Urban degraded (stream miles)
	5.2 Rural degraded (stream miles)
Phase 6 Overlays:	
	Riparian/floodplain corridors
	MS4 areas
	CSS areas
	Federal properties

Peter Claggett, Geographer U.S. Geological Survey

pclaggett@usgs.gov

pclagget@chesapeakebay.net