

2017 Land Use (& Revised 2013 Land Use)

Peter R. Claggett¹, Labeeb Ahmed², Matthew Baker³, Jacob Czawlytco⁴, Sarah McDonald¹, Sean MacFaden⁵, Jarlath O'Neil-Dunne⁵, David Saavedra⁴, and Rachel Soobitsky⁴

¹ Presenting Author, Lower Mississippi-Gulf Water Science Center, U.S. Geological Survey, Annapolis, MD 21403

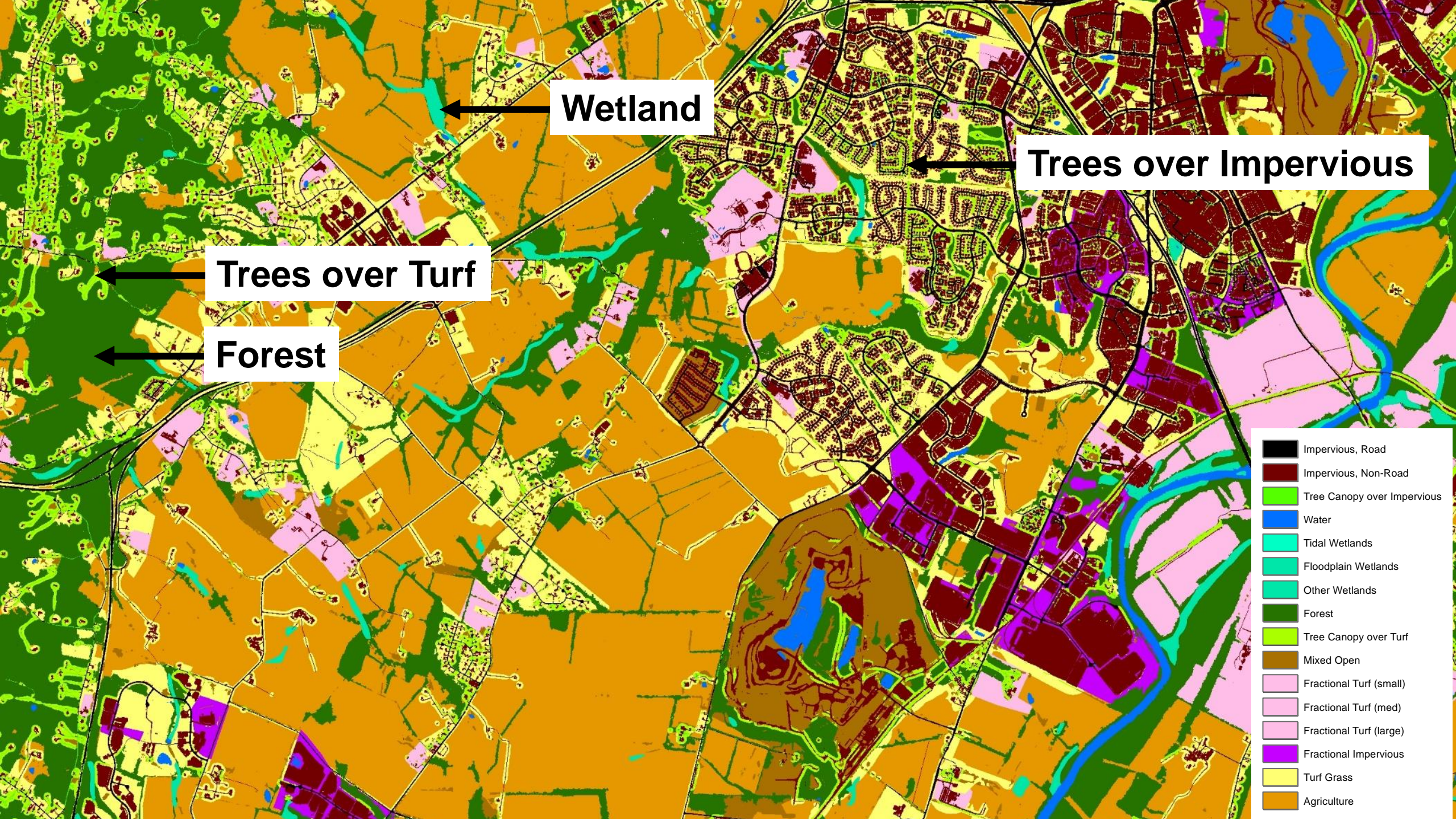
² Attain LLC, Annapolis, MD 21403

³ Department of Geography and Environmental Systems, University of Maryland, Baltimore County, MD 21250

⁴ Chesapeake Conservancy, Annapolis, MD 21403

⁵ University of Vermont Spatial Analysis Laboratory, Burlington, VT 05405

**CBP Water Quality Goal Implementation Team
September 28, 2020**



Chesapeake Bay Program Land Use Classification (58-64 classes)

1. Water (8)

1.1 Lentic

- 1.1.1 Estuary
- 1.1.2 Lakes & Ponds

1.2 Lotic

- 1.2.1 Streams
 - 1.2.1.1 Sunlit
 - 1.2.1.2 Shaded
 - 1.2.1.3 Culverted/ Buried
- 1.2.2 Ditches
 - 1.2.2.1 Sunlit
 - 1.2.2.2 Shaded
 - 1.2.2.3 Culverted/ Buried

2. Developed (12)

2.1 Impervious

- 2.1.1 Roads
- 2.1.2 Structures
- 2.1.3 Other Impervious (Parking lots, driveways)

2.2 Pervious

- 2.2.1 Turf Grass
- 2.2.2 Bare Construction
- 2.2.3 Suspended Succession (rights-of-way)
 - 2.1.7.1 Barren
 - 2.1.7.2 Herbaceous
 - 2.1.7.3 Scrub-shrub

2.3 Urban Tree Canopy (TC)

- 2.3.1 TC over Roads
- 2.3.2 TC over Structures

2.3.3 TC over Other Impervious

2.3.4 TC over Turf Grass

3. Forest (5)

3.1 Contiguous (> 1 acre)

3.2 Fragmented (< 1 acre)

3.3 Natural Succession (e.g., Fallow)

3.3.1 Barren

3.3.2 Herbaceous

3.3.3 Scrub-shrub

4. Production (14)

4.1 Agriculture*

4.1.1 Cropland

4.1.1.1 Barren

4.1.1.2 Herbaceous

4.1.2 Pasture

4.1.2.1 Barren

4.1.2.2 Herbaceous

4.1.3 Orchard/vineyard

4.1.3.1 Barren

4.1.3.2 Herbaceous

4.1.3.3 Scrub-shrub

4.2 Timber Harvest

4.2.1 Barren

4.2.2 Herbaceous

4.2.3 Scrub-shrub

4.3 Solar fields

4.4 Extractive

4.4.1 Barren

4.4.2 Herbaceous

4.4.3 Scrub-shrub

5. Wetlands and Water Margins (25)

5.1 Tidal

5.1.1 Open water

5.1.2 Barren

5.1.3 Herbaceous

5.1.4 Scrub-shrub

5.1.5 Contiguous Forest

5.1.6 Fragmented Forest

5.2 Non-tidal

5.2.1 Riverine (groundwater)

5.2.1.1 Open water

5.2.1.2 Barren

5.2.1.3 Herbaceous

5.2.1.4 Scrub-shrub

5.2.1.5 Contiguous Forest

5.2.1.6 Fragmented Forest

5.2.2 Riverine (surface water)

5.2.2.1 Open water

5.2.2.2 Barren

5.2.2.3 etc...

5.2.3 Other

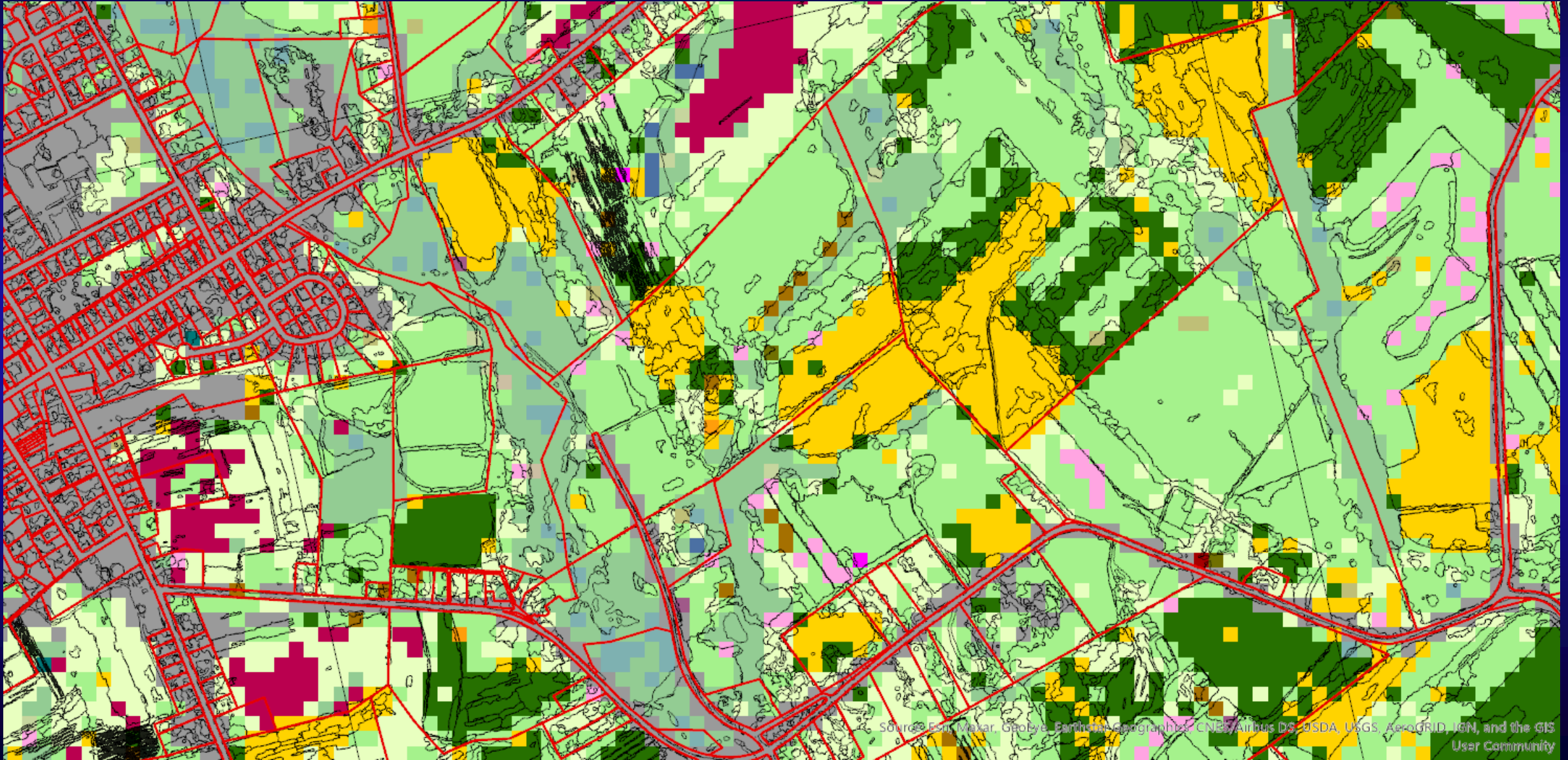
5.2.3.1 Open water

5.2.3.2 Barren

5.2.3.3 etc...

5.3 Bare shore

Parcel Segments: the key to classifying high-resolution land use

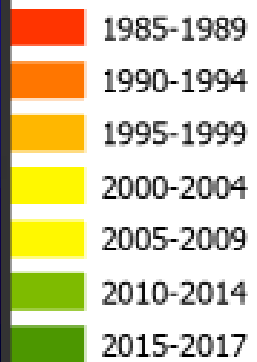




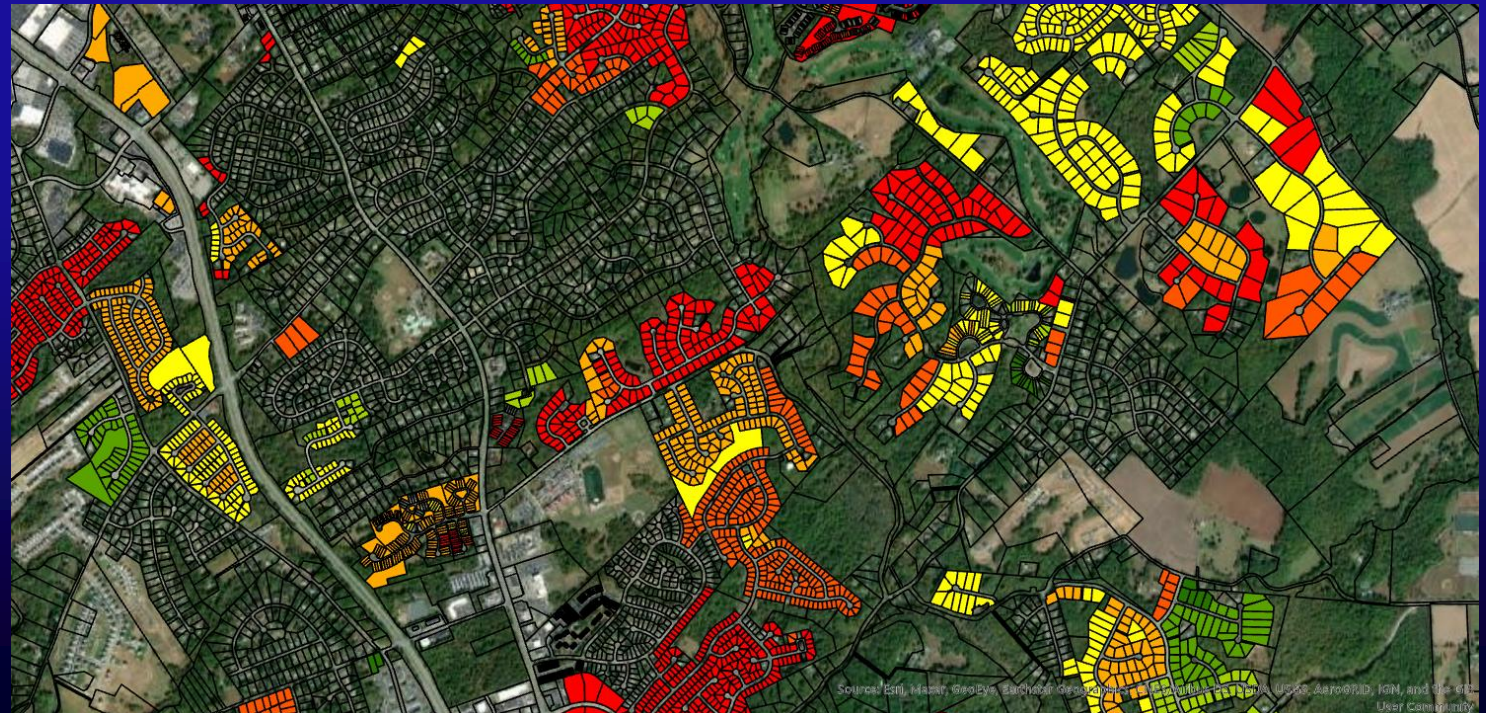
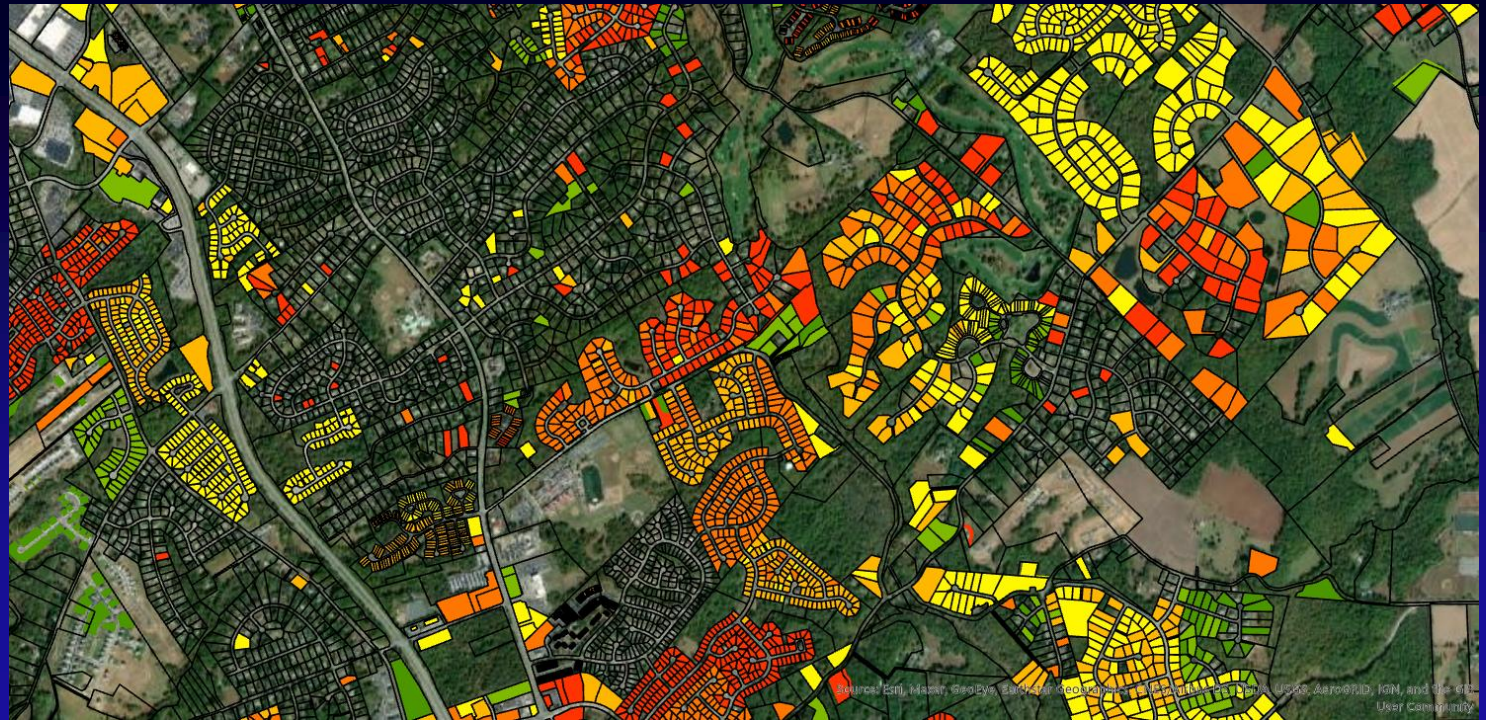
Parcel-Level Deconstruction of Urban Development

Year-Built Attributes
from Tax Records

yearblt



Year-Built Attributes
from USGS' LCMAP



Land Use Production for CAST-21

2017 Land Use Production Schedule		2020			2021							
Order	Task	OCT	NOV	DEC	JAN	FEB	MAR	APR	MAY	JUN	JUL	AUG
1	Local review of 2017 Land Cover Data			LUWG			LUWG			LUWG		
2	Draft Hyper-resolution Hydrography			LUWG			LUWG			LUWG		
3	Cropland, Pasture, Orchards, and Turf Grass	AGWG										
4	Suspended Succession, Bare Shore, and Solar Fields	LUWG										
5	Tidal & NonTidal Wetlands		WWG									
6	Bare Construction		LUWG									
7	Forests, Tree Canopy, Timber Harvests, and Natural Succession			FWG								
8	Federal Facility Land Uses			FedFac								
9	Data clean up											
10	Prototype Land Use in 14 counties											
11	Approve 2017 Land Use Methods					LUWG	AGWG, FWG, WWG, FedFac	WQGIT				
12	Complete 2017 Land Use Dataset									LUWG		
13	Revise 2013 Land Use (to match 2017)						LUWG			LUWG		
14	Update MS4s, Sewer, Septic, Zoning, and Population Estimates and Projections											
15	Revise Agricultural Forecast Methodology						AGWG					
16	Update Land Use Forecasts									LUWG		
17	Update 2013, 2017, and 2025 CAST Inputs										LUWG	WQGIT



science for a changing world