

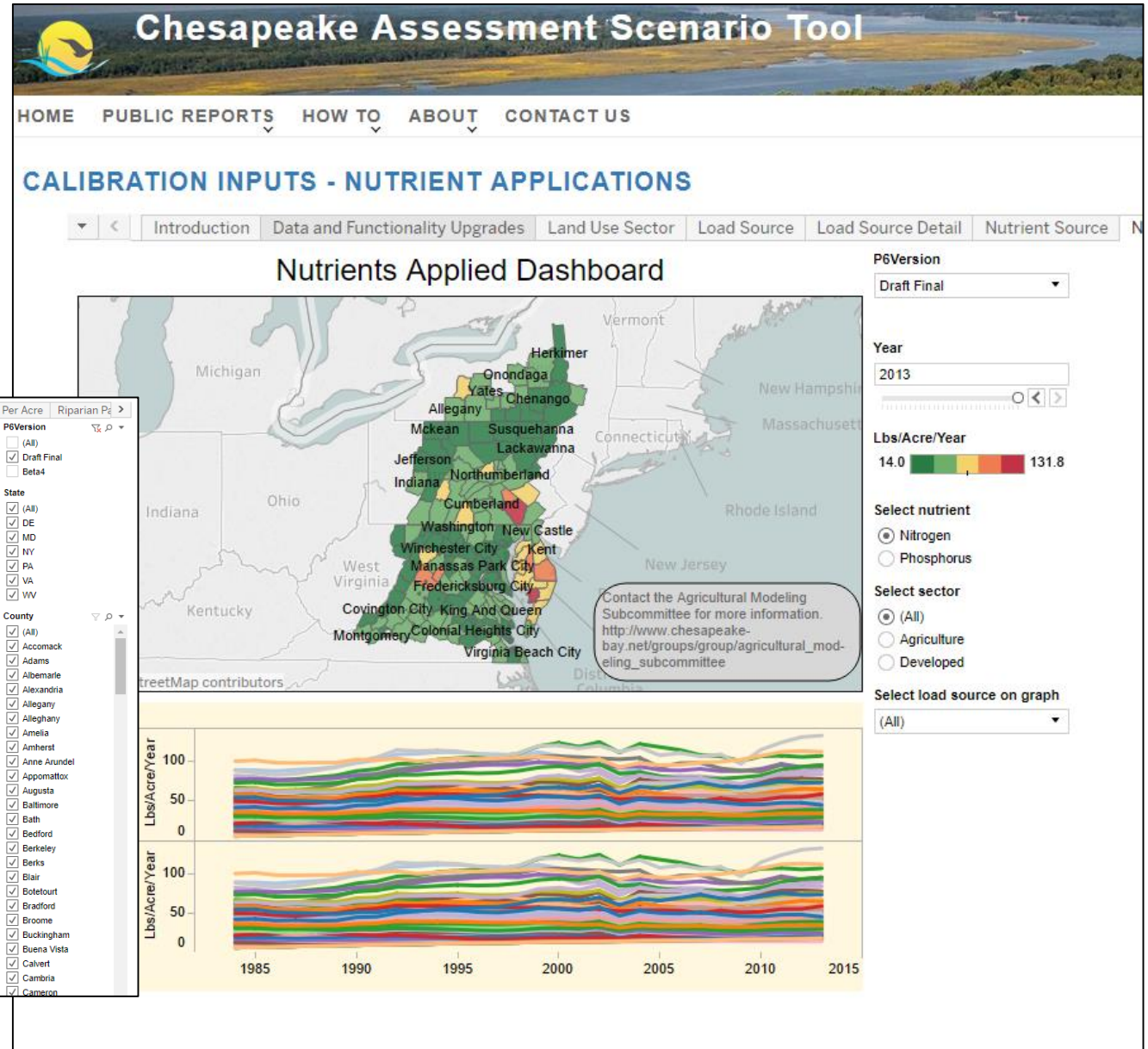
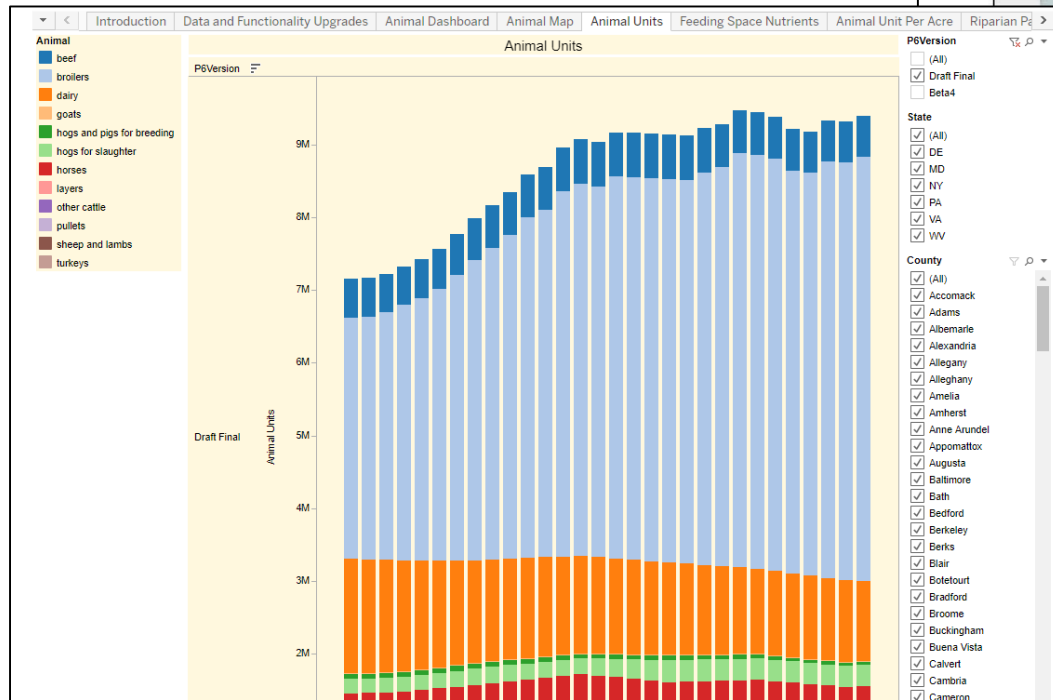
# Preliminary Data Viz Tools to Assist with Draft Phase III Planning Targets

John Wolf  
USGS – EGSC  
WQGIT Meeting  
September 26, 2017

# Overview

- Review what currently exists
- Projects under development
- WQGIT engagement moving forward

# Phase 6 Model Inputs



<http://cast.chesapeakebay.net/Documentation/CalibrationInputs>

# Non-Tidal Water Quality Dashboard

## Chesapeake Bay Non-Tidal Water Quality Dashboard

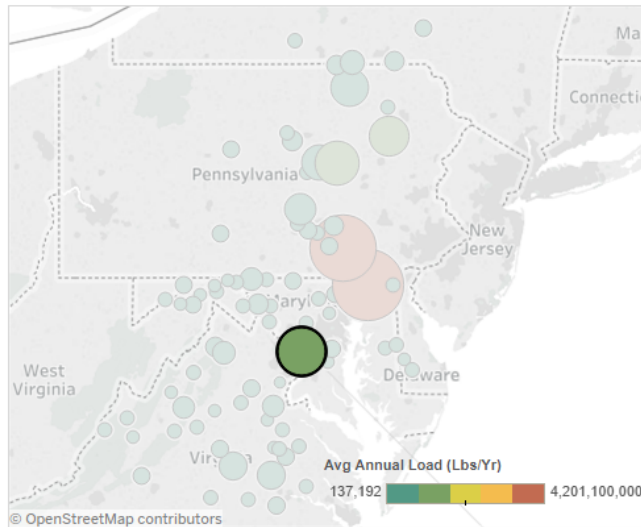
First, choose a Parameter of interest. Then, click on a station in the map to select, and the associated statistics are provided for this catchment area adjacent to the map. Trend, Load and Yield data are also evaluated by selecting their End-Year from the dropdown. For more information, including data download options, click on the links below.

Parameter

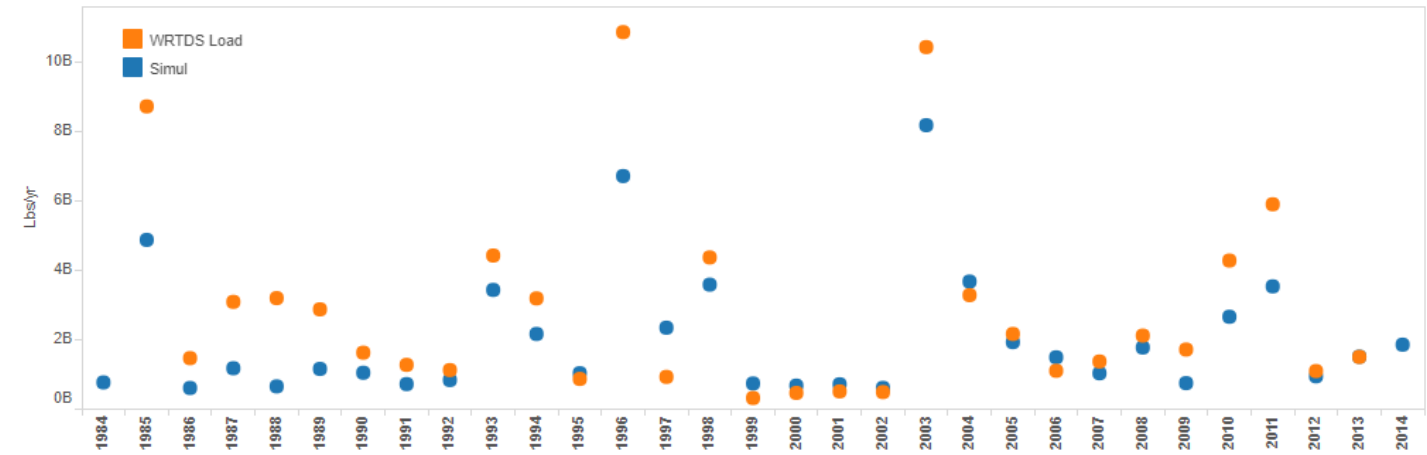
Total nitrogen

Non-Tidal Network Stations

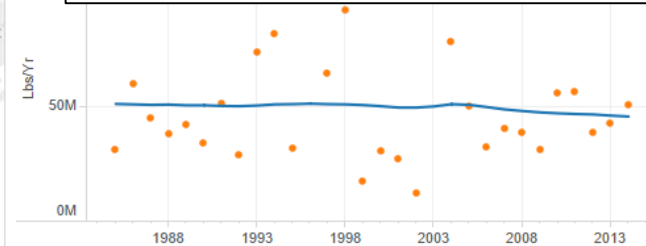
Station: 1646580



### WRTDS/WSM Loads



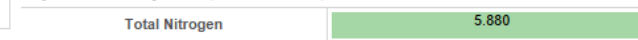
Annual



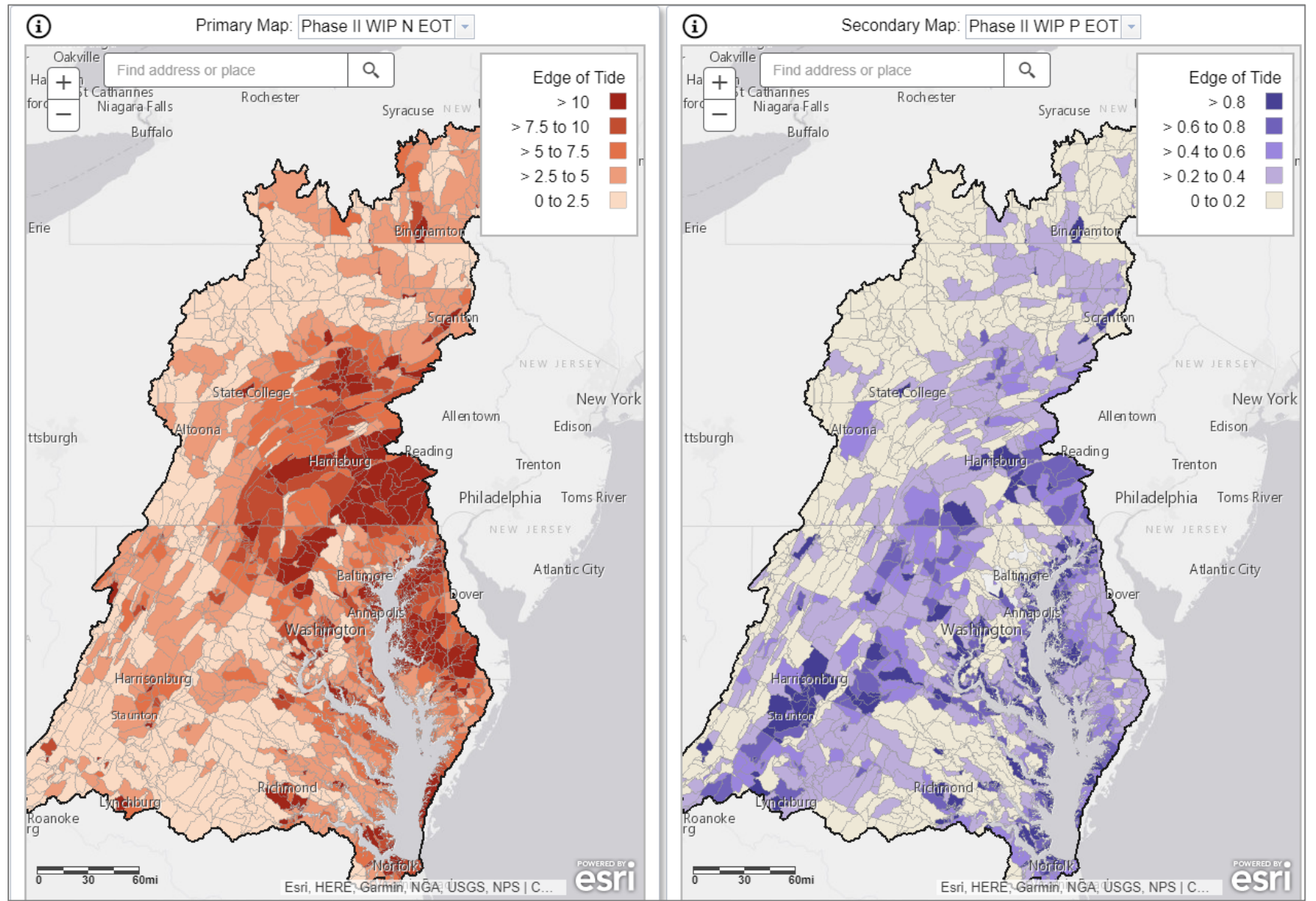
### Trends (through 2014)



### 5-year mean yield (2008-2012)



# Scenario Comparison Viewer



<https://gis.chesapeakebay.net/mpa/comparescenarios/>

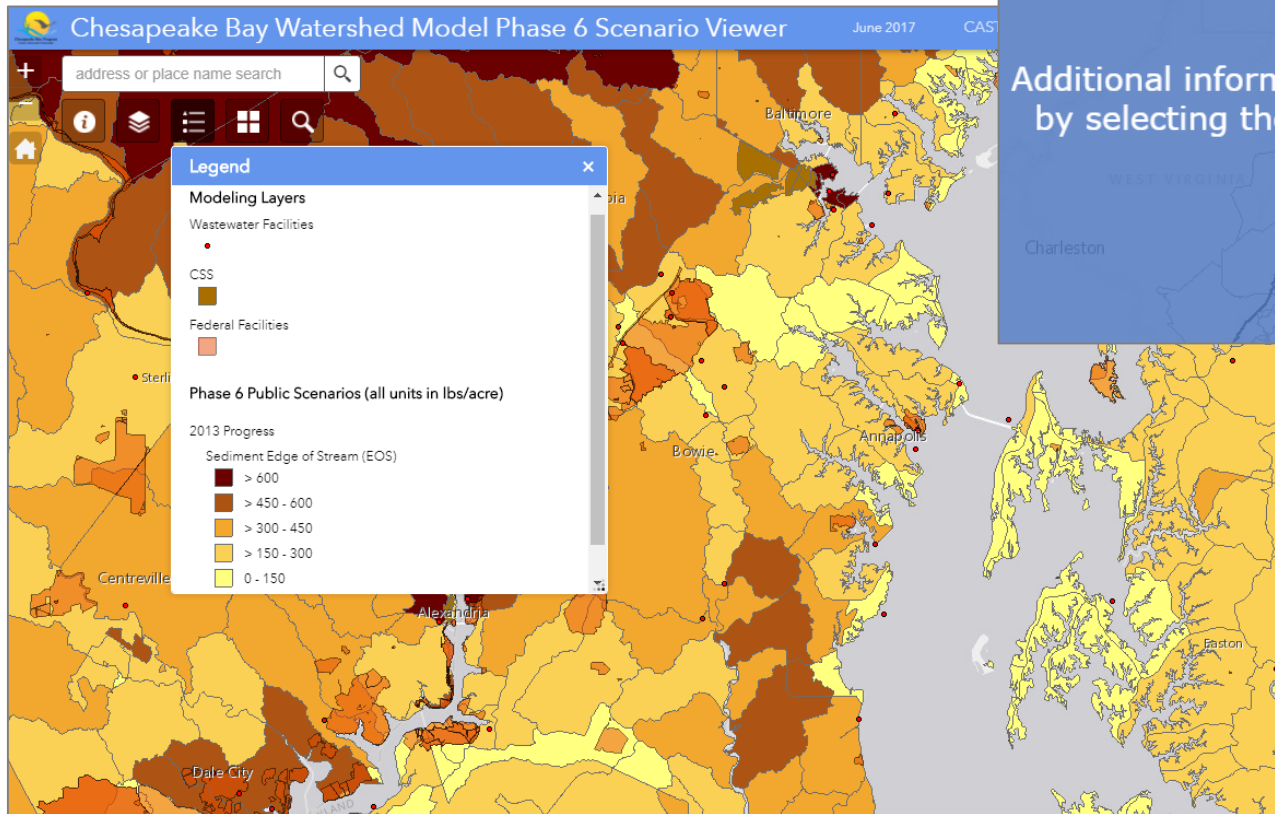


# Model Scenario Viewer

## Welcome to the Chesapeake Bay Watershed Model Phase 6 Map Viewer.

This Viewer provides basic mapping functionality for a subset of Public Reports for Load Scenarios available from the CAST Tool. It also contains map layers for several commonly requested data layers associated with the Chesapeake Bay suite of models.

Additional information on using and navigating the Map Viewer is available by selecting the About Icon (i) in the upper left corner of the map view.



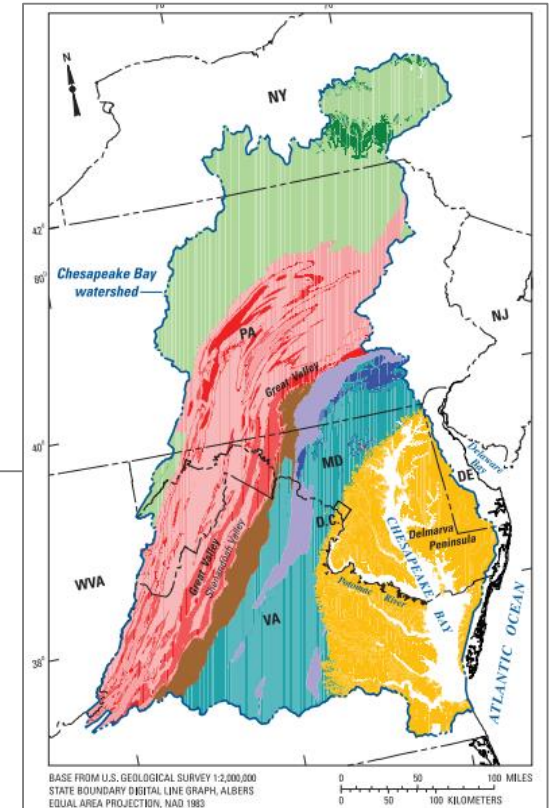
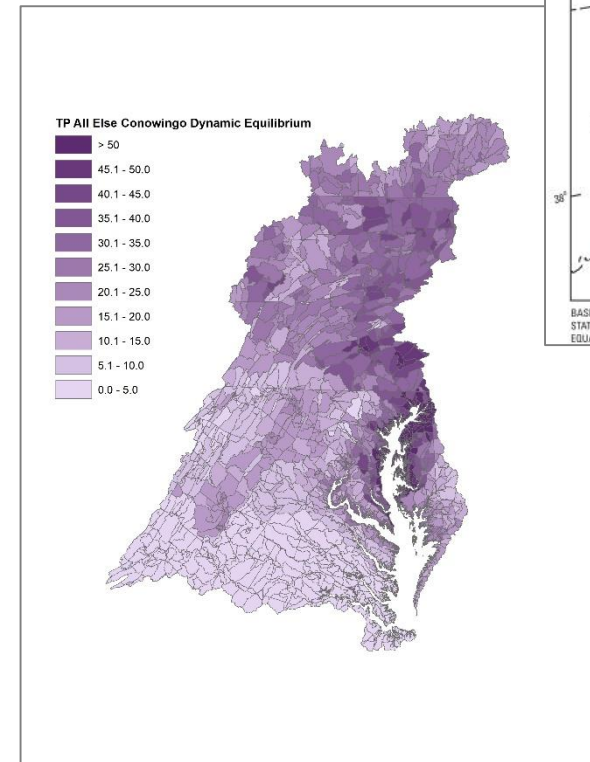
<https://gis.chesapeakebay.net/mpa/scenarioviewer/>

# Model Scenario Viewer – Existing Data

- Modeling Layers
  - WWTP, CSS, MS4, Federal Facilities, Segment Boundaries,
- Land Use Data
- Phase 6 Public Scenarios
- Cross-GIT Mapping Layers
  - Data layers identified as important to other Outcomes

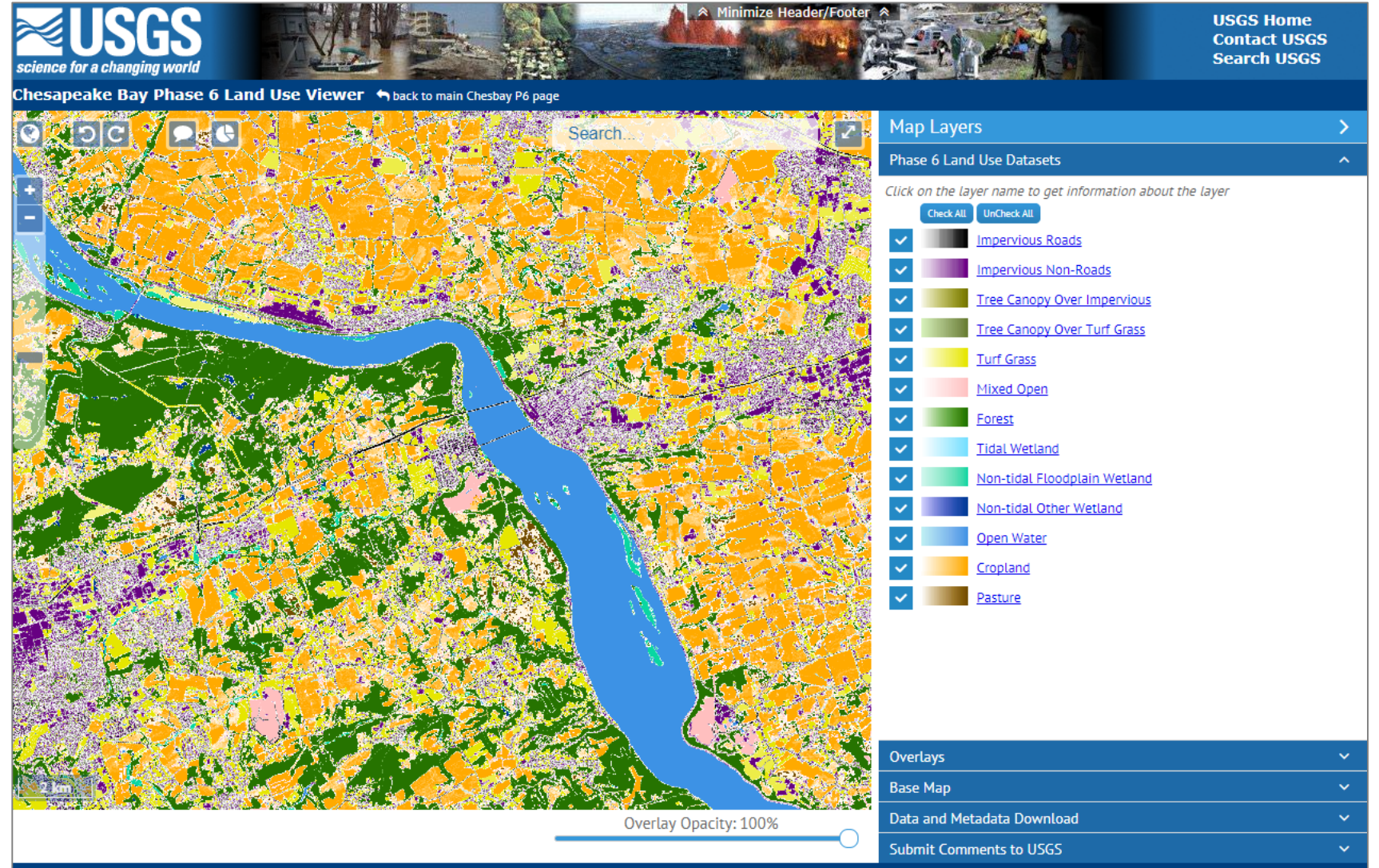
# Model Scenario Viewer – Planned Enhancements (10/17)

- USGS Published Layers
  - SPARROW N and P
  - Hydrogeomorphic – vulnerability layers
  - Groundwater layers
- Other Phase 6 Products?
  - N, P Effectiveness
  - Land change projections





# Land Use Viewer



<https://chesapeake.usgs.gov/phase6/map/>

# Guidelines for Allocations

## 2010 TMDL

- Allocated N and P loads must result in attainment of water quality standards
- Areas that contribute the most to the problem must do the most to resolve the problem.
- All tracked and reported reductions in nutrient loads are credited toward achieving final assigned loads.

# Guidelines for Allocations

## 2010 TMDL

- Allocated N and P loads must result in attainment of water quality standards
- Areas that contribute the most to the problem must do the most to resolve the problem.
- All tracked and reported reductions in nutrient loads are credited toward achieving final assigned loads.

All products are  
preliminary and  
DRAFT!!!!