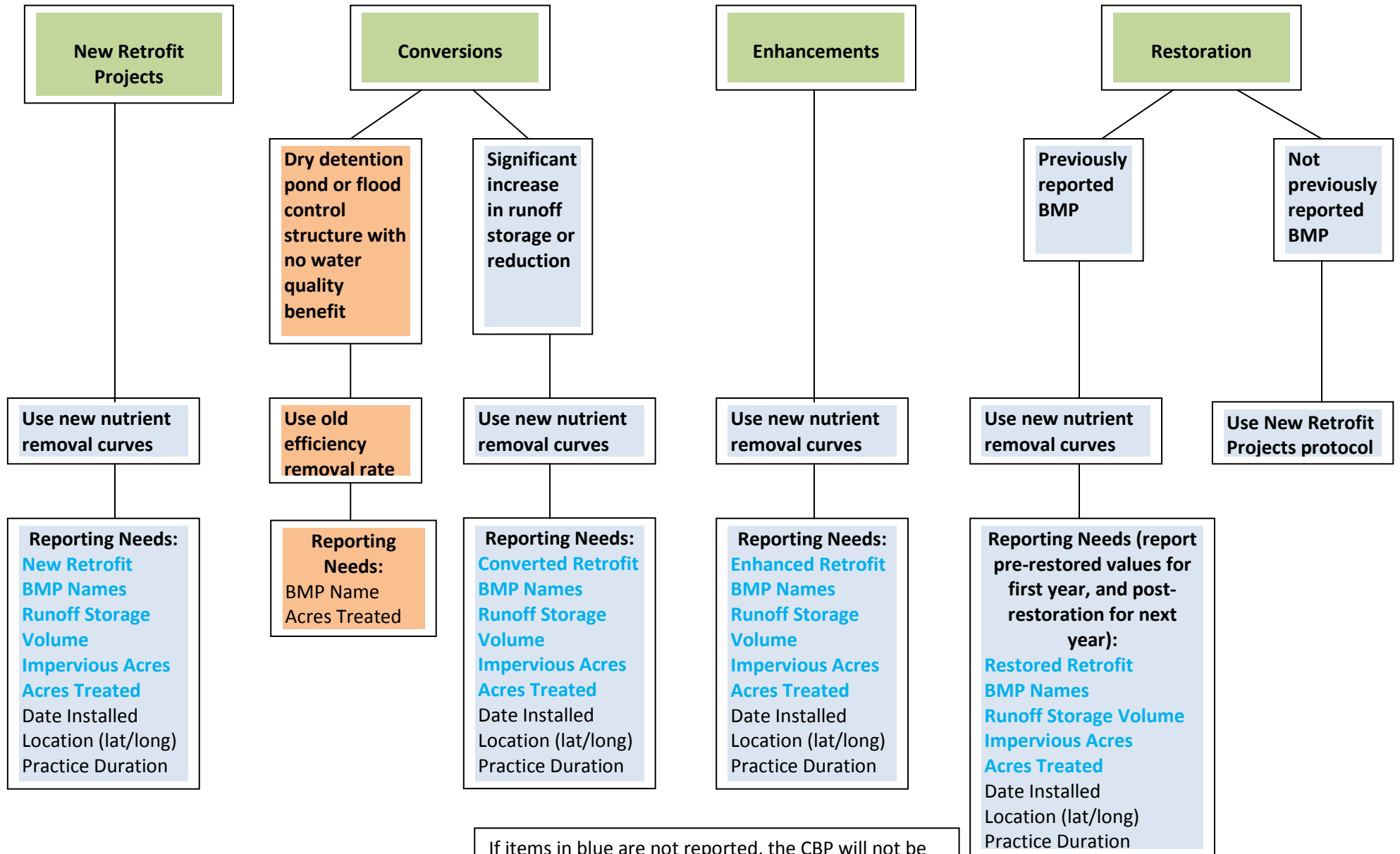


Stormwater Retrofit Project Reporting Recommendations



If items in blue are not reported, the CBP will not be able to credit any practice using the new state stormwater performance standards protocol. If only blue items are reported, the CBP will only be able to credit the state with a default of 0.5 inches of runoff treatment volume (still under review by the Watershed Technical Workgroup).

Stormwater New or Re-Development Project Reporting Recommendations

New Development Project

Non-Conforming Project

Conforming Project

Served by a
single BMP

Served by
multiple BMPs

Use old
efficiency
removal rate

Use new nutrient
removal curves

Use new nutrient
removal curves

**Reporting
Needs:**
BMP Name
Acres Treated

Reporting Needs:
New Development
BMP Names
Runoff Storage
Volume
Impervious Acres
Acres Treated
Date Installed
Location (lat/long)
Practice Duration

Reporting Needs:
New Development
BMP Names
Runoff Storage
Volume
Impervious Acres
Acres Treated
Date Installed
Location (lat/long)
Practice Duration

Re-Development Project

Non-Conforming Project

Conforming Project

Served by a
single BMP

Served by
multiple BMPs

Use old
efficiency
removal rate

Use new nutrient
removal curves

Use new nutrient
removal curves

**Reporting
Needs:**
BMP Name
Acres Treated

Reporting Needs:
Re-Development
BMP Names
Runoff Storage
Volume
Disturbed Acres
Impervious Acres
Date Installed
Location (lat/long)
Practice Duration

Reporting Needs:
Re-Development
BMP Names
Runoff Storage
Volume
Disturbed Acres
Impervious Acres
Date Installed
Location (lat/long)
Practice Duration

If items in blue are not reported, the CBP will not be able to credit any practice using the new state stormwater performance standards protocol. If only blue items are reported, the CBP will only be able to credit the state with a default of 0.5 inches of runoff treatment volume (still under review by the Watershed Technical Workgroup).