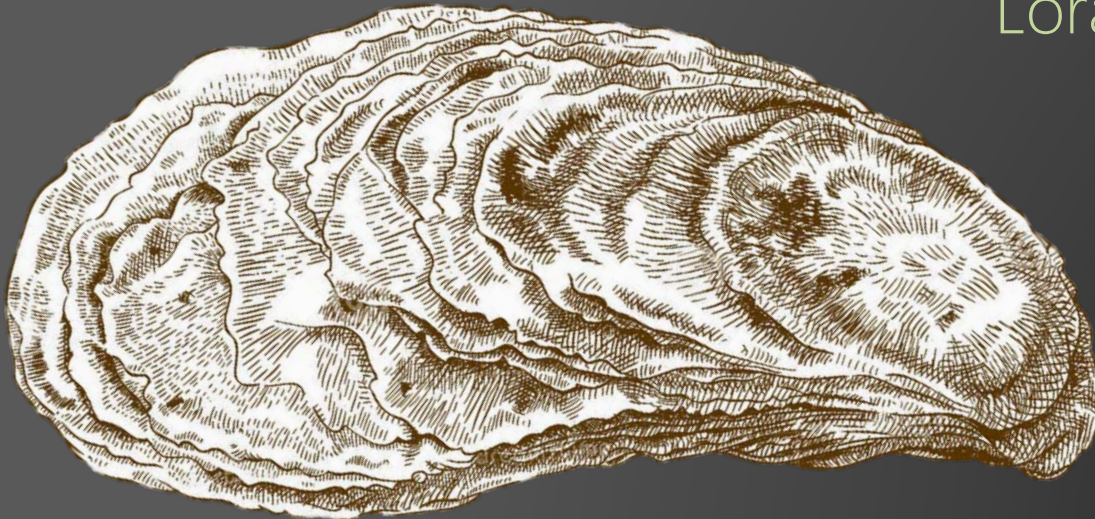


ReeFBioDES: The Oyster Reef Filtration, Biodeposition, and Ecosystem Services Model



Lora Harris & Jeremy Testa

Kevin Kahover

Larry Sanford

Elizabeth North



University of Maryland
CENTER FOR ENVIRONMENTAL SCIENCE

ReeFBioDES: The Oyster Reef Filtration, Biodeposition, and Ecosystem Services Model



Lora Harris & Jeremy Testa

Kevin Kahover

Larry Sanford

Elizabeth North



University of Maryland
CENTER FOR ENVIRONMENTAL SCIENCE

Oyster reefs and nutrients

Oysters enhance delivery of organic matter to the benthos



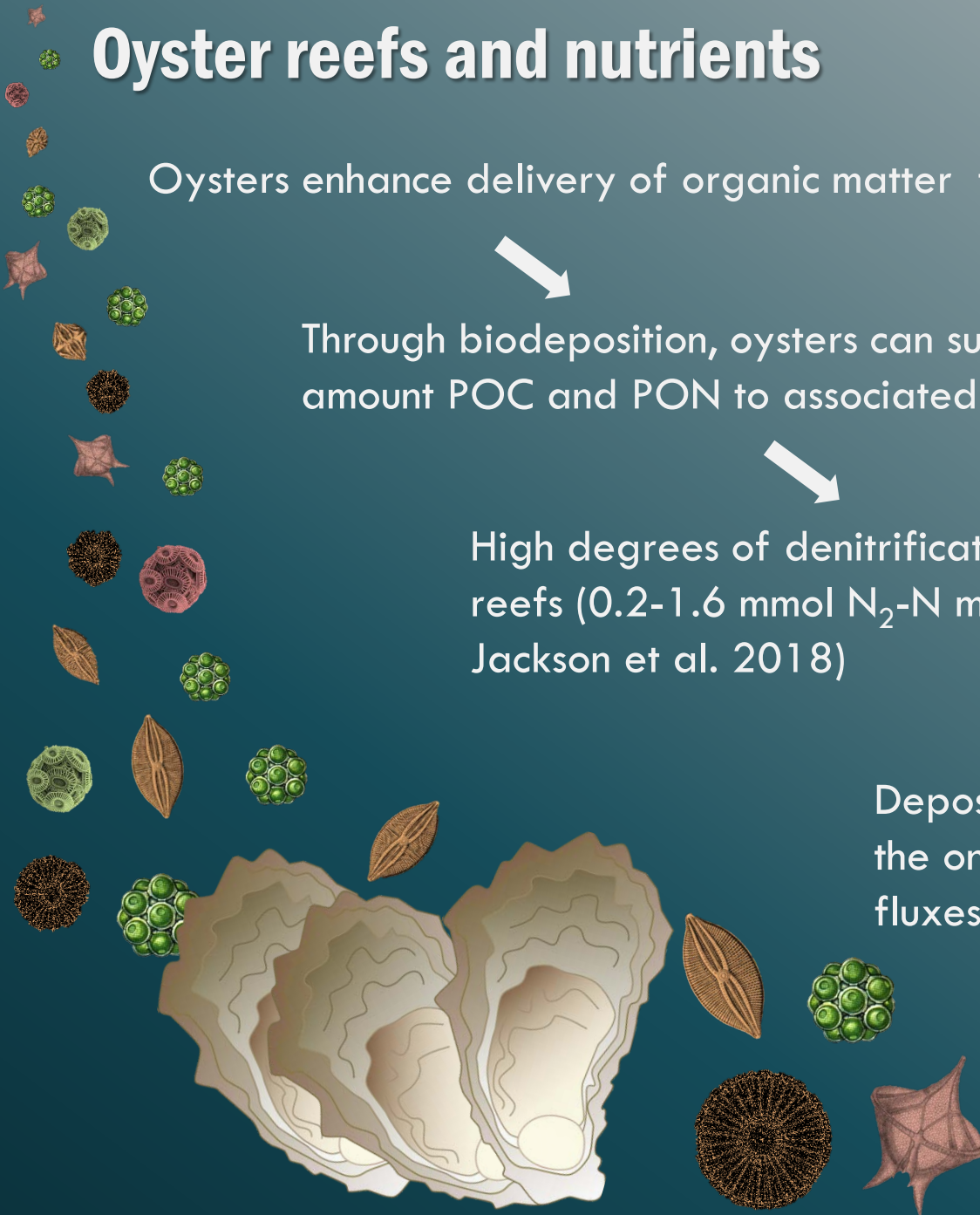
Through biodeposition, oysters can supply a substantial amount POC and PON to associated reef sediments



High degrees of denitrification have been found on restored reefs ($0.2\text{--}1.6 \text{ mmol N}_2\text{-N m}^{-2} \text{ h}^{-1}$) (Kellog et al 2013; Jackson et al. 2018)



Deposition of biodeposits likely not the only process responsible for the fluxes that have been observed

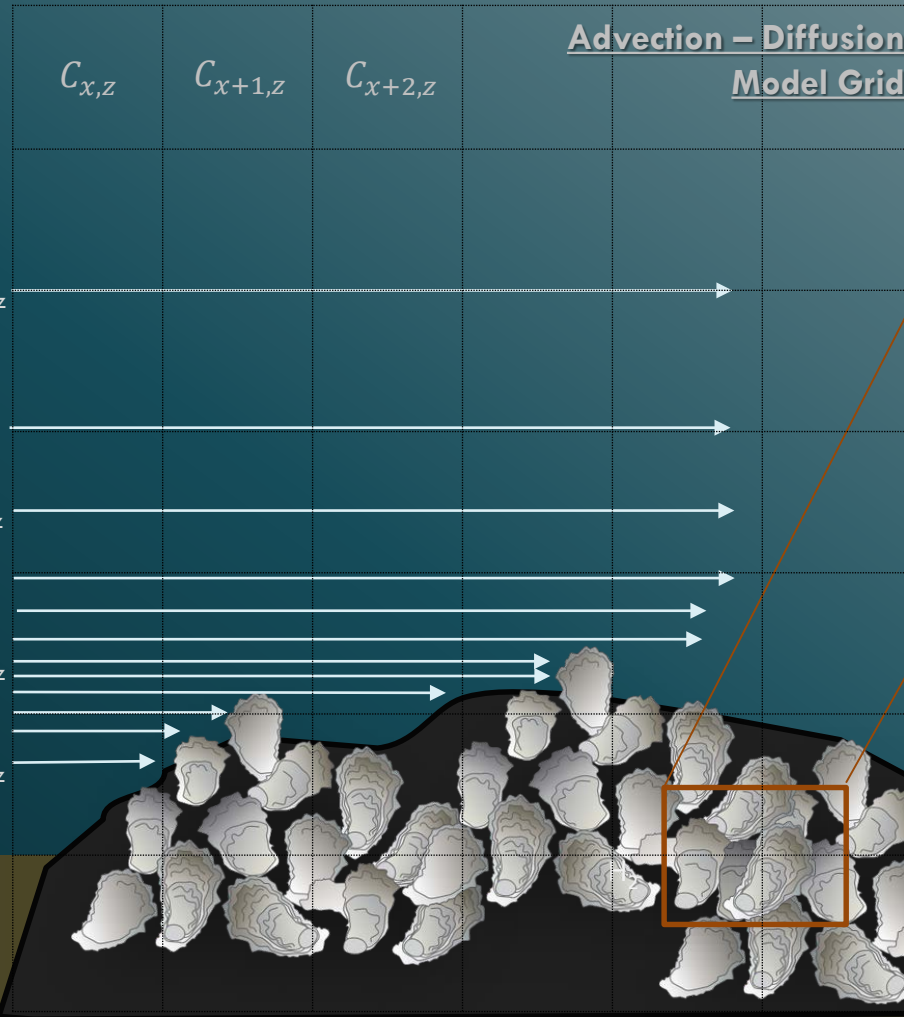


Model Overview

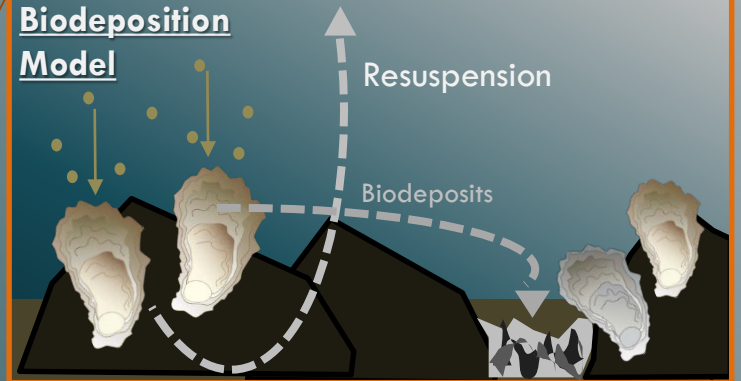
How does it work?

Nitrogen-Oyster Dynamics Model

Oyster Filtration Model



Biodeposition Model



Water Column
 H_0

Aerobic Layer

H_1

Anaerobic Layer

Sediment Flux Model

Nitrification: $\text{NH}_4^+ \rightarrow \text{NO}_3^-$

Denitrification: $\text{NO}_3^- \rightarrow \text{N}_2$

Diagenesis: $\text{PON} \rightarrow \text{NH}_4^+$
(Ammonification)

Denitrification: $\text{NO}_3^- \rightarrow \text{N}_2$

NH_4^+ NO_3^-
↓ ↓
 NH_4^+ NO_3^-

NH_4^+ NO_3^-
↓ ↓
 NH_4^+ NO_3^-

Burial

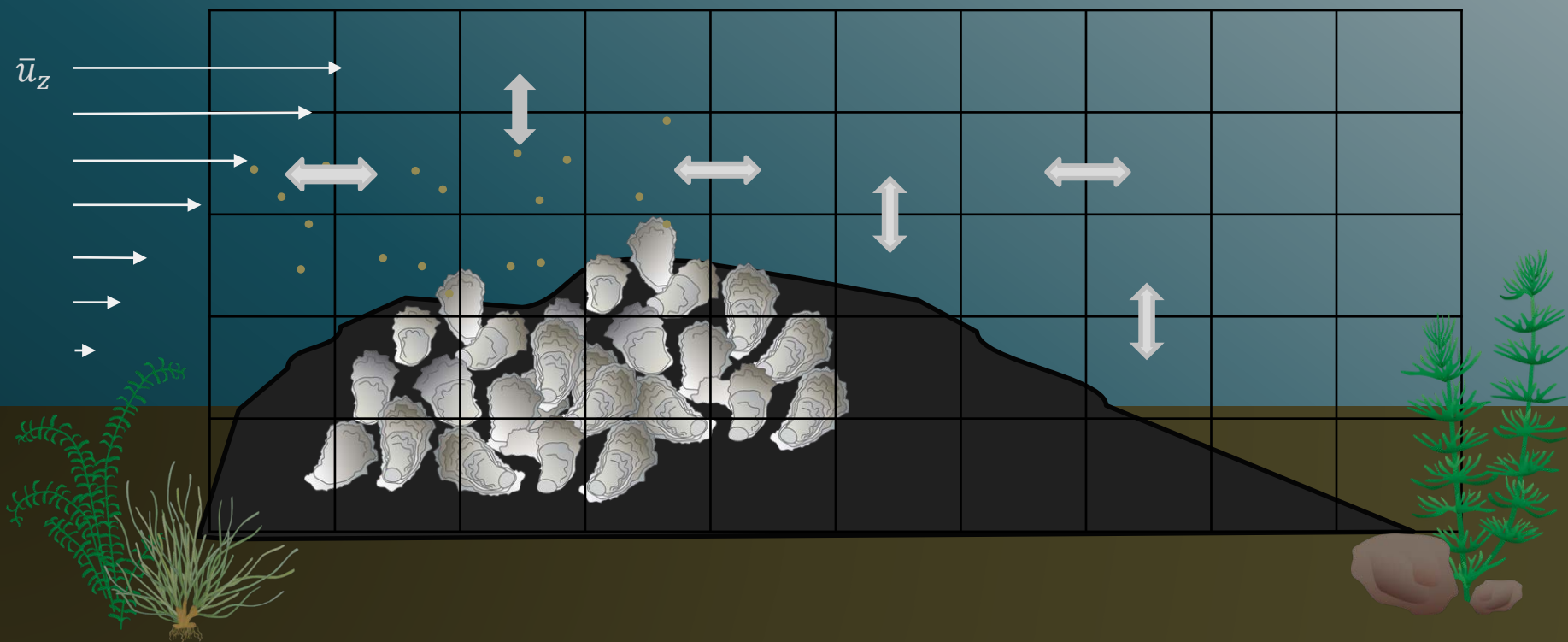
N_2

Chlorophyll over the Reef Advection-Diffusion Model

Δ in concentration over time $\rightarrow \frac{\partial C}{\partial t} + \frac{\partial uC}{\partial x} + \frac{\partial wC}{\partial z} = \frac{\partial}{\partial z} \left(K_z \frac{\partial C}{\partial z} \right) + S$

advection sinking vertical turbulent diffusivity Removal

Use 2D grid to track changes in Chl-a over the reef



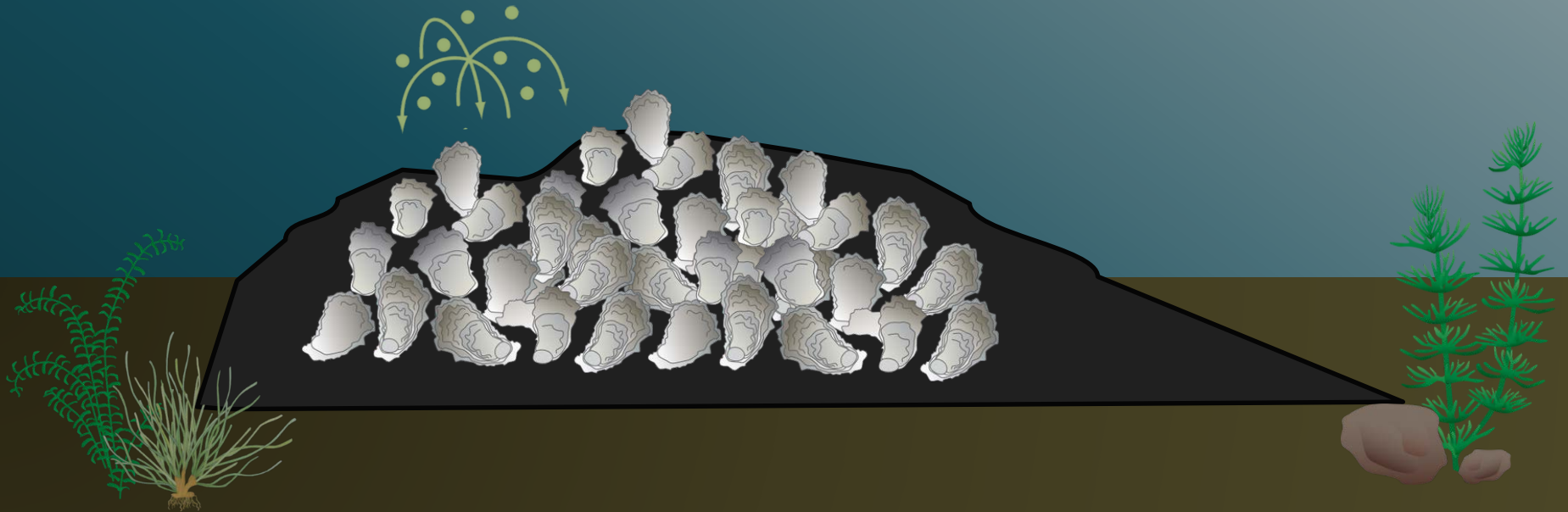
Filtration Model

$$\text{Filtration Rate (m}^3 \text{ oyster}^{-1} \text{ day}^{-1}\text{):}$$
$$FR_{(i)} = 0.17 \times W^{0.75} \times f(T) \times f(S) \times f(TSS)$$

(Ehrich and Harris 2015)

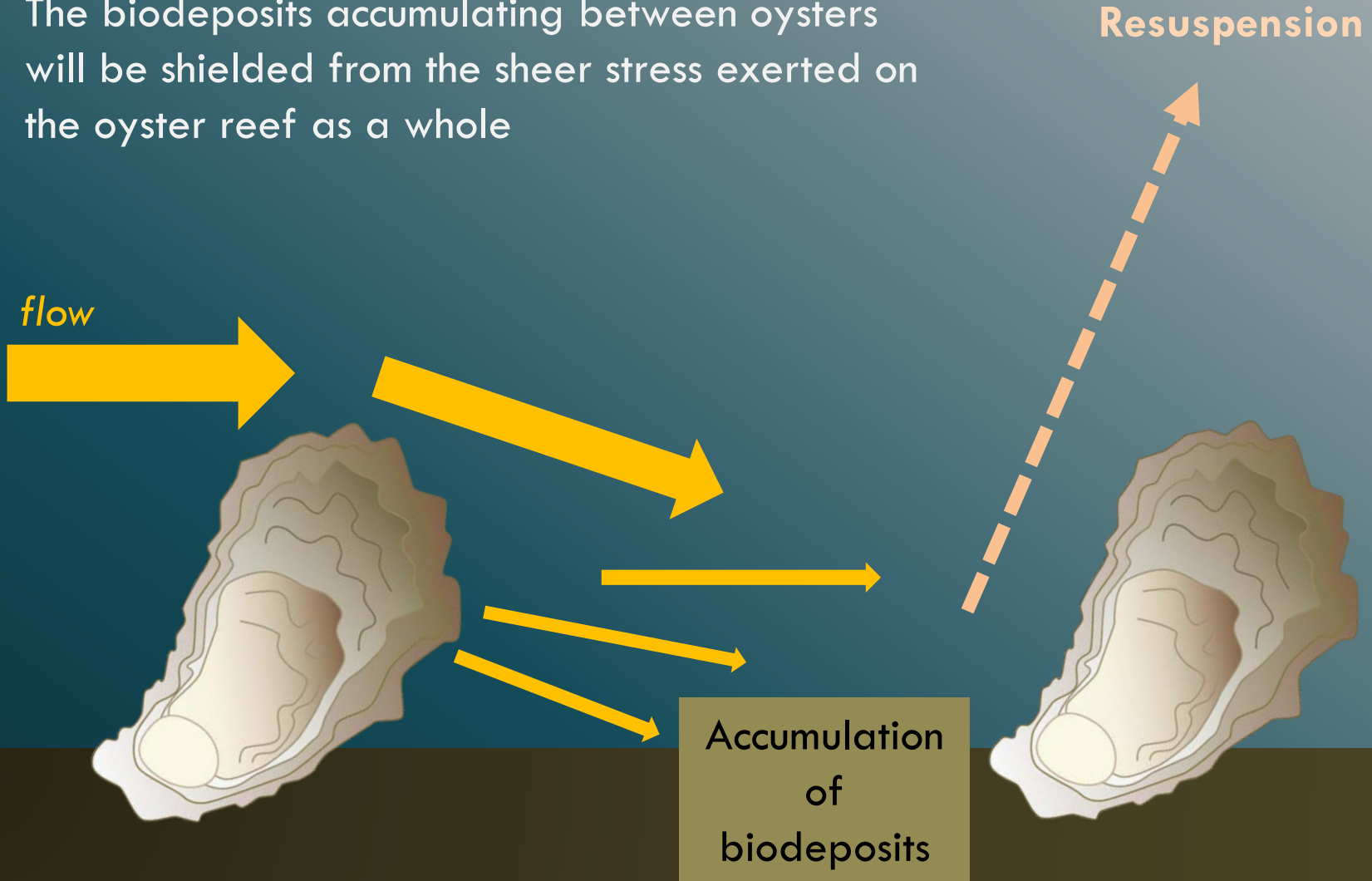
Filtration rate is a function of:

- temperature
- salinity
- concentration of total suspended solids



Biodeposit Transport

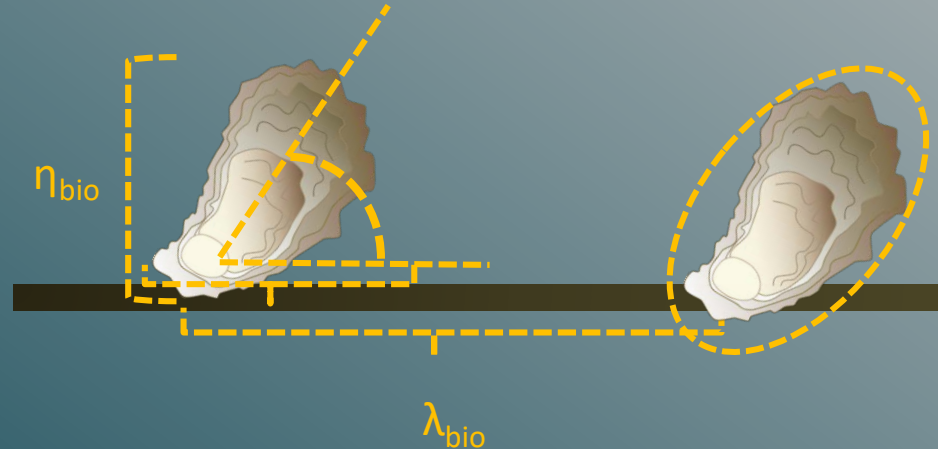
The biodeposits accumulating between oysters will be shielded from the sheer stress exerted on the oyster reef as a whole



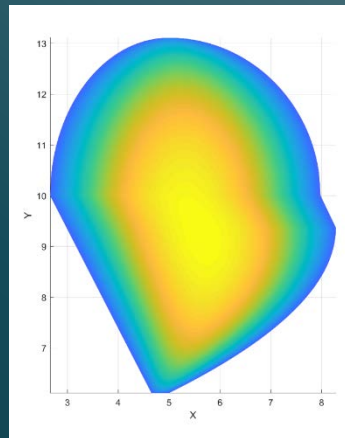
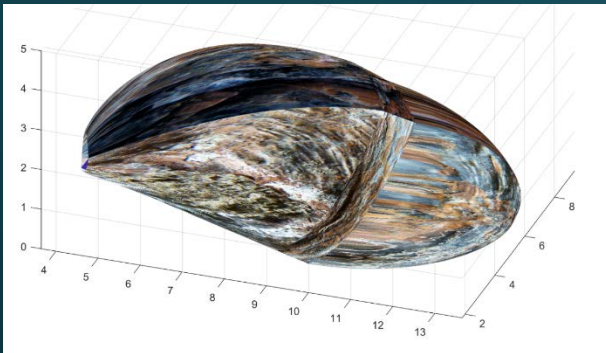
Biodeposit Transport

The amount of shear stress exerted on the biodeposits depends on:

- The small-scale geometry of the oyster bed
- Hydrodynamic conditions
- Size of biodeposits

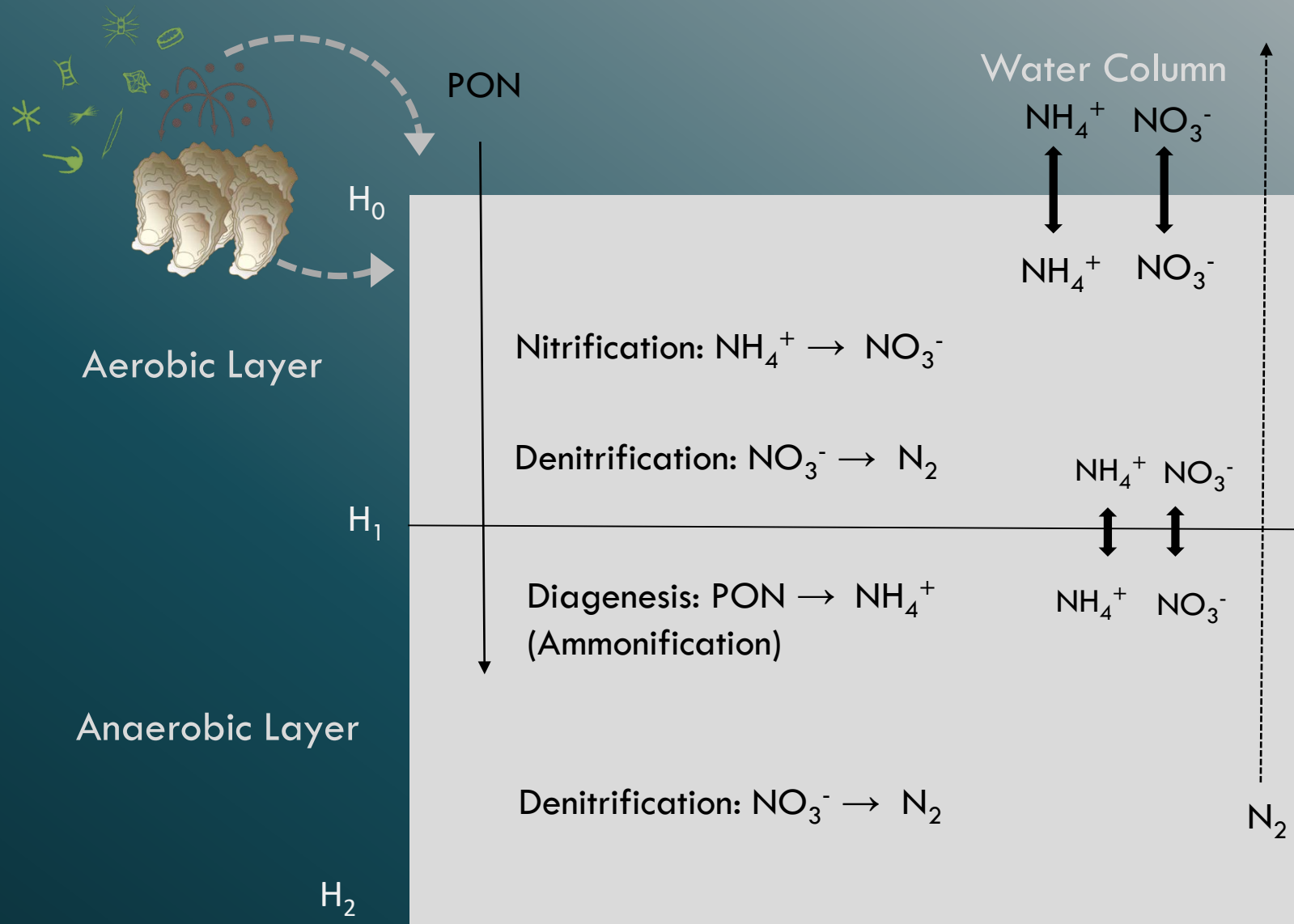


Therefore, we had to find innovative solutions to simulate the factors that influence resuspension:



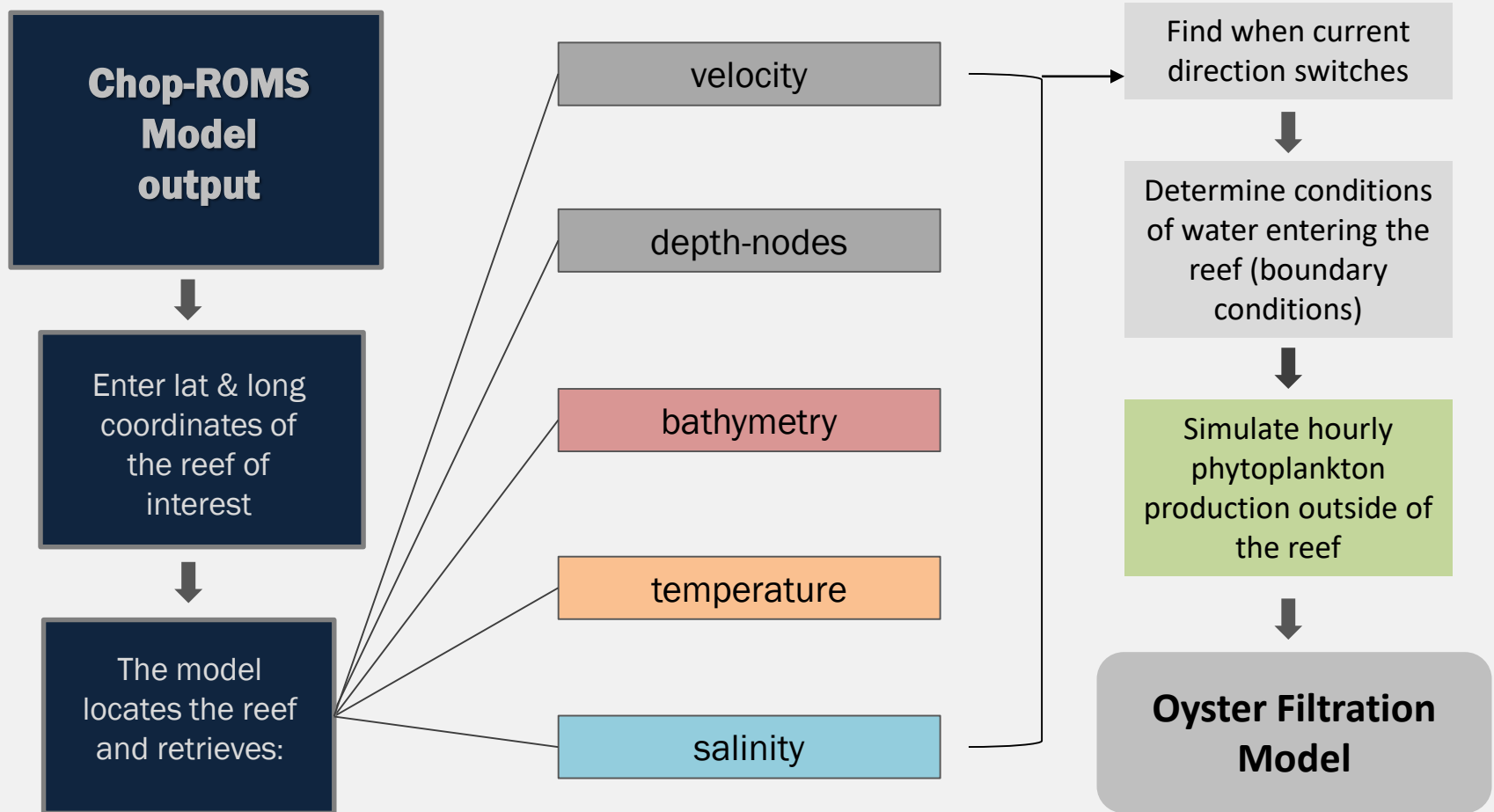
3D oysters allow us to retrieve important features of roughness geometry

The final piece... the sediment flux model

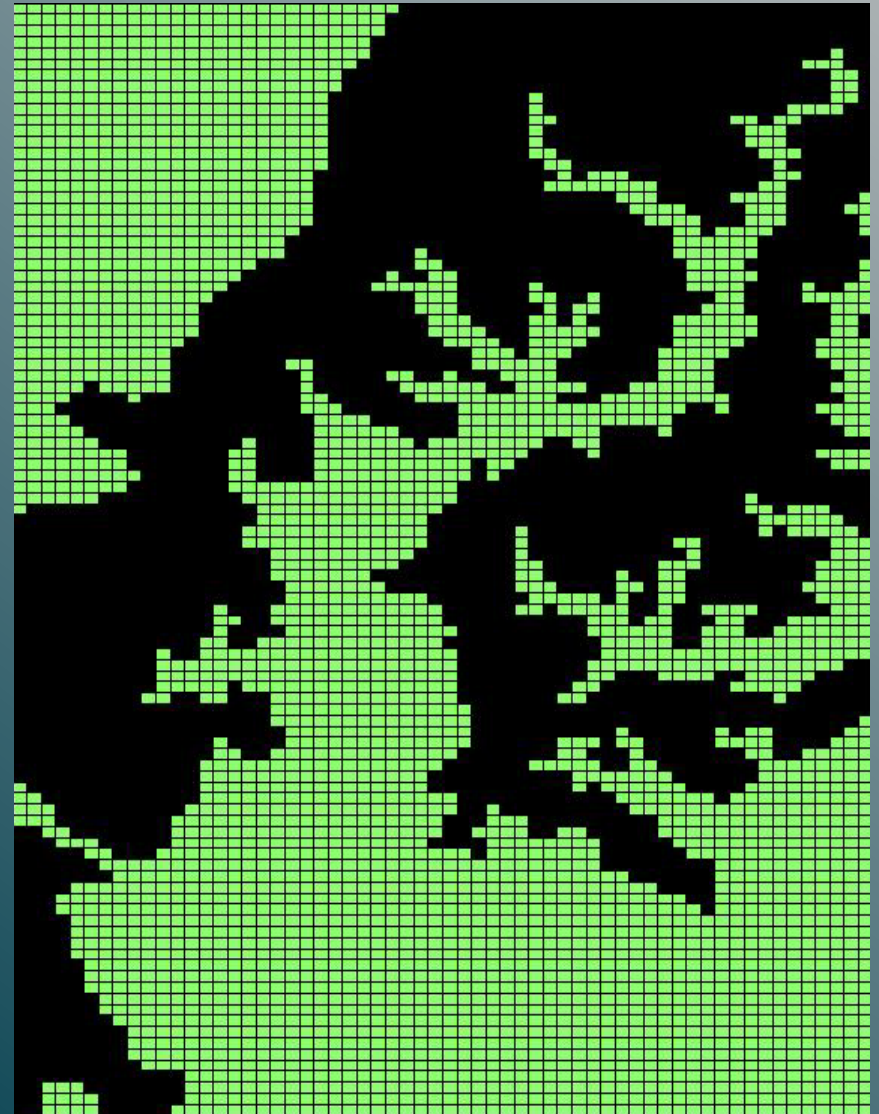
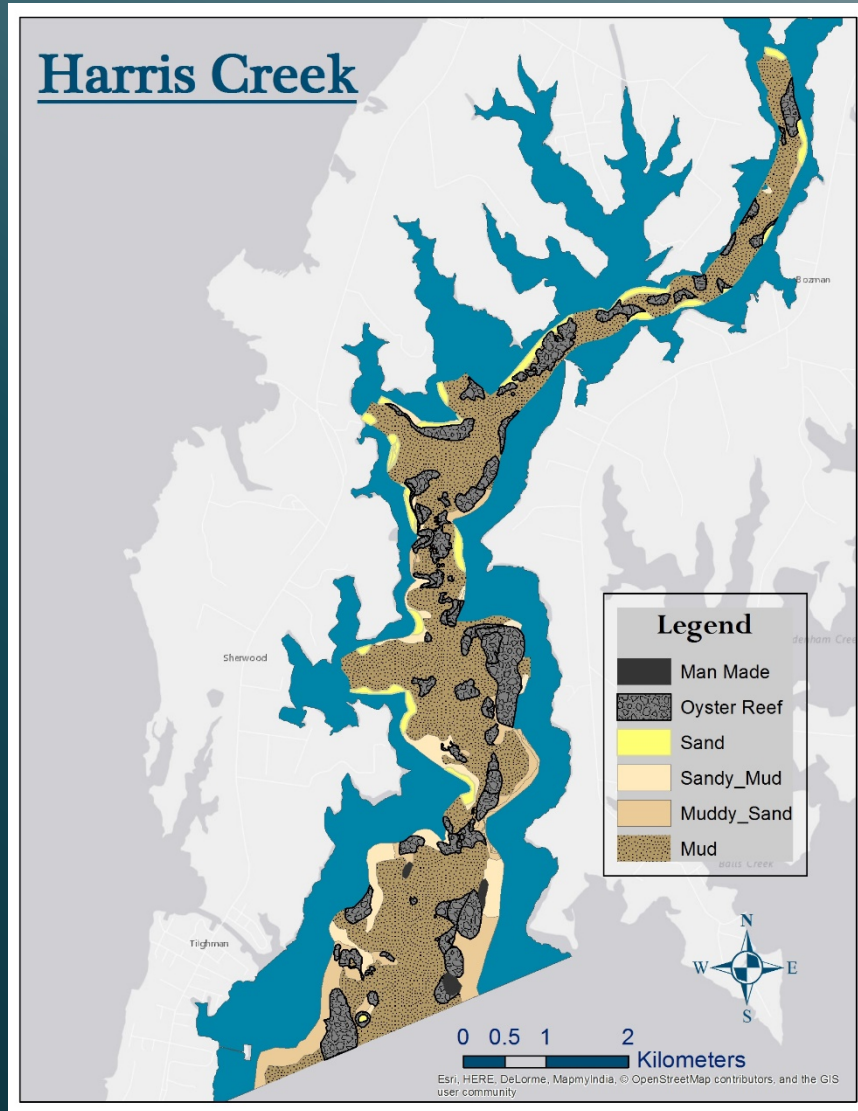


Forcing Functions

How do we get values for the environmental variables?



Filtration Model – where to parameterize?

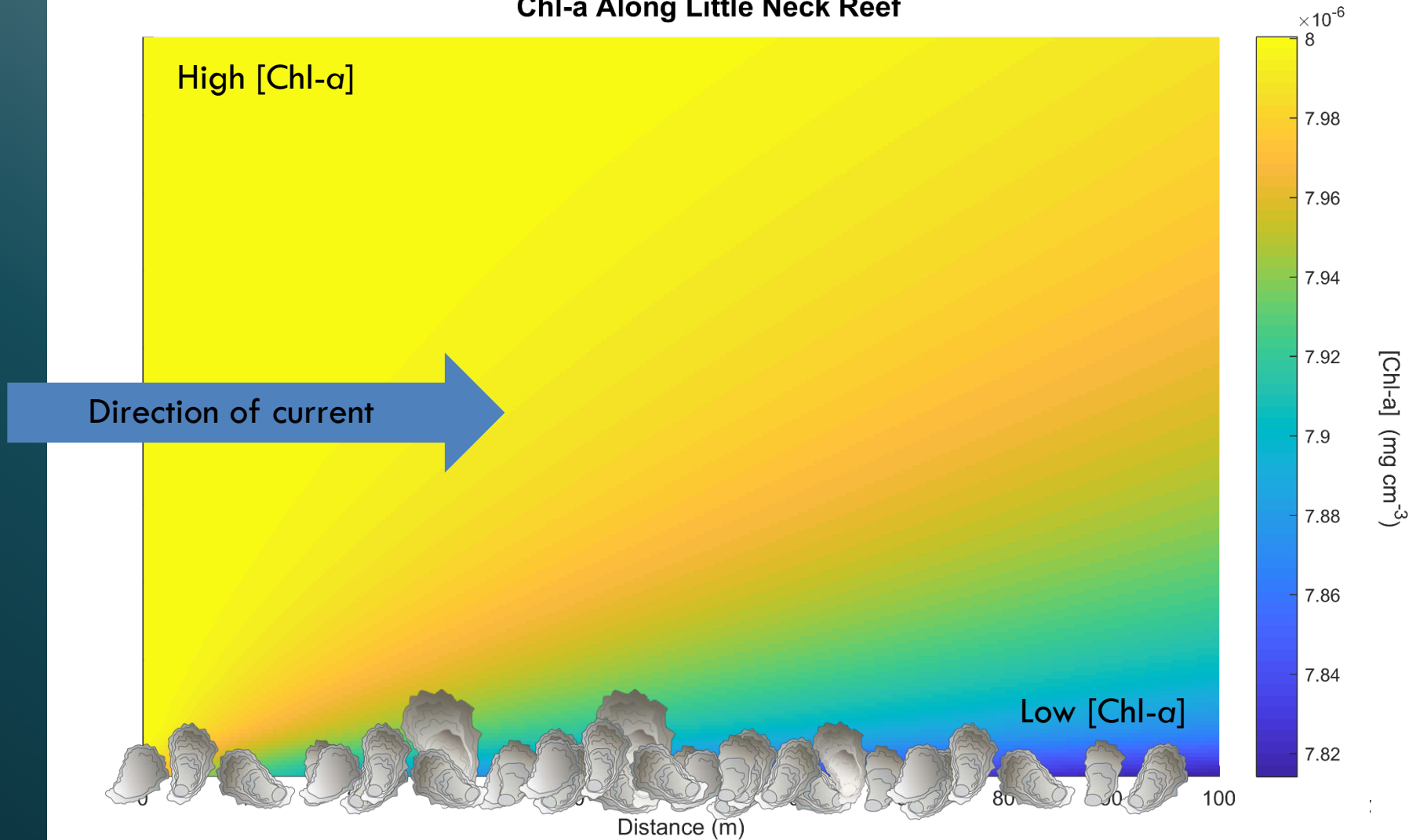


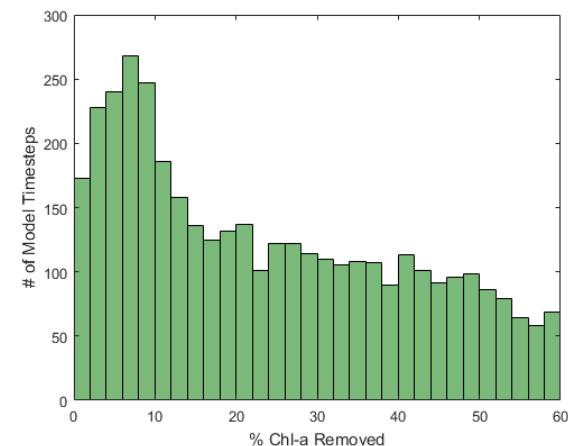
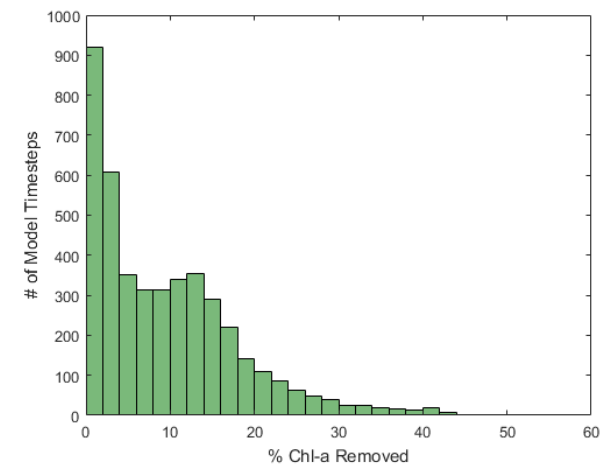
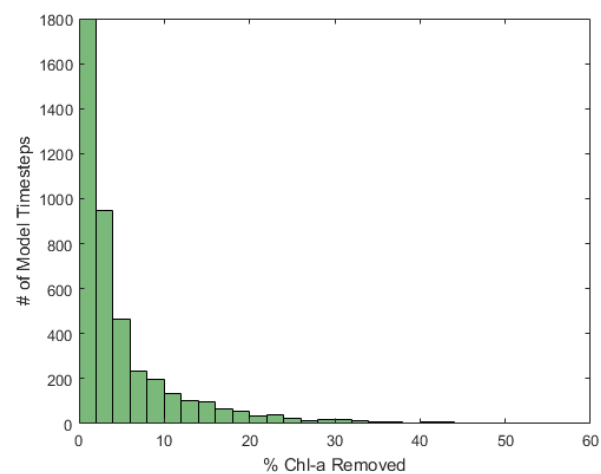
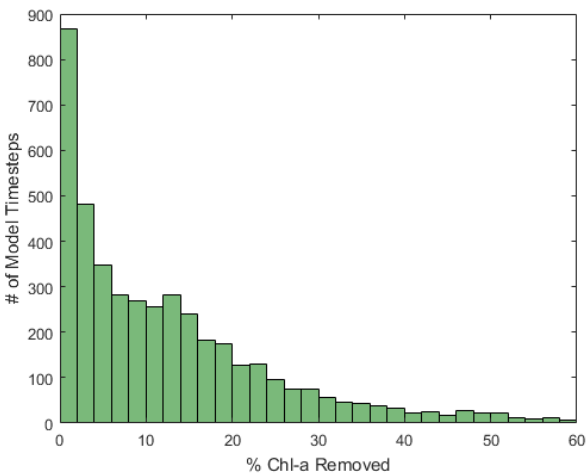
Preliminary Results

What did we find?

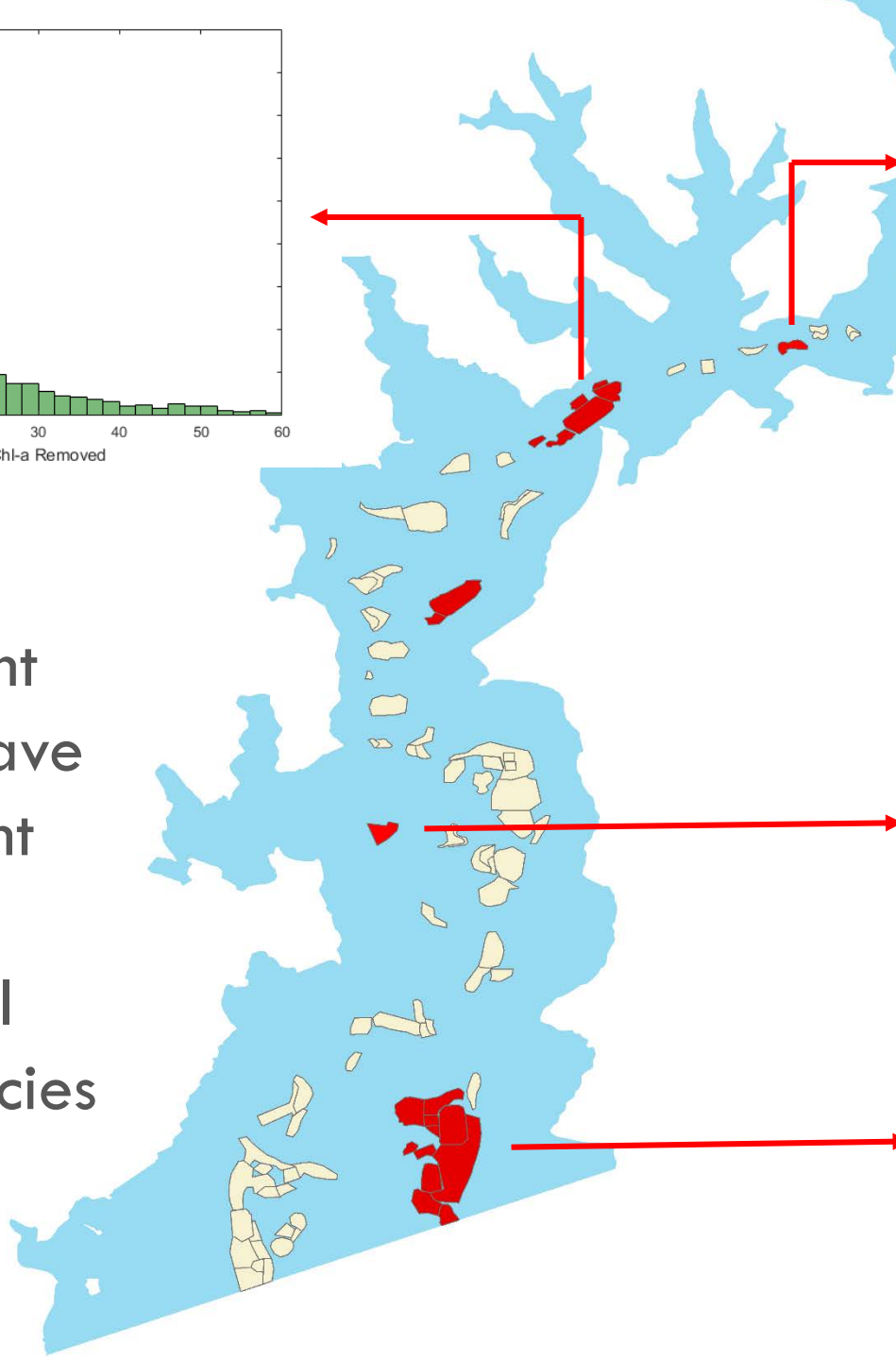
Filtration Model

Chl-a Along Little Neck Reef



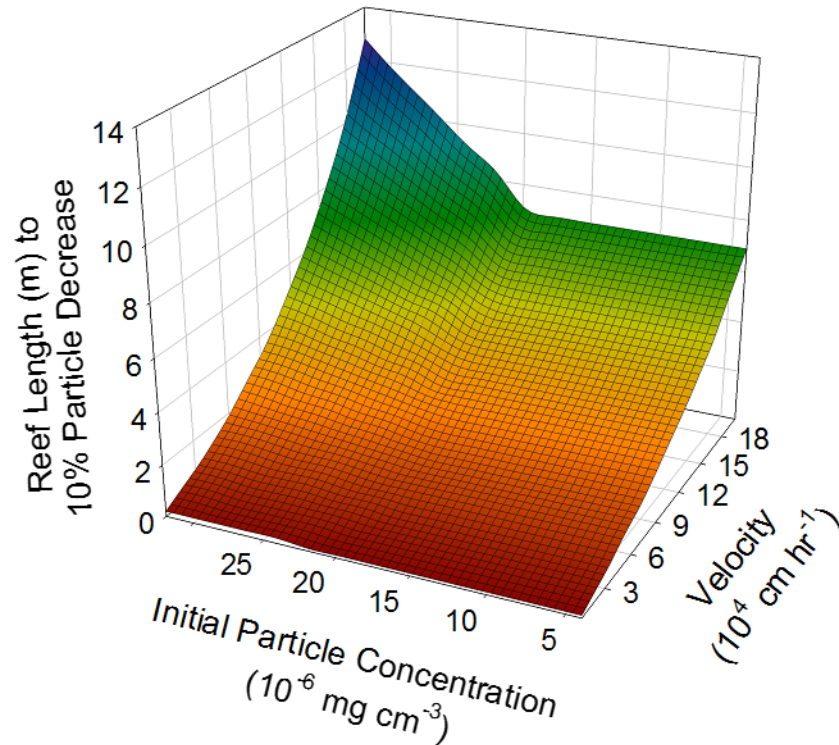


Different
reefs have
different
Chl-a
removal
efficiencies

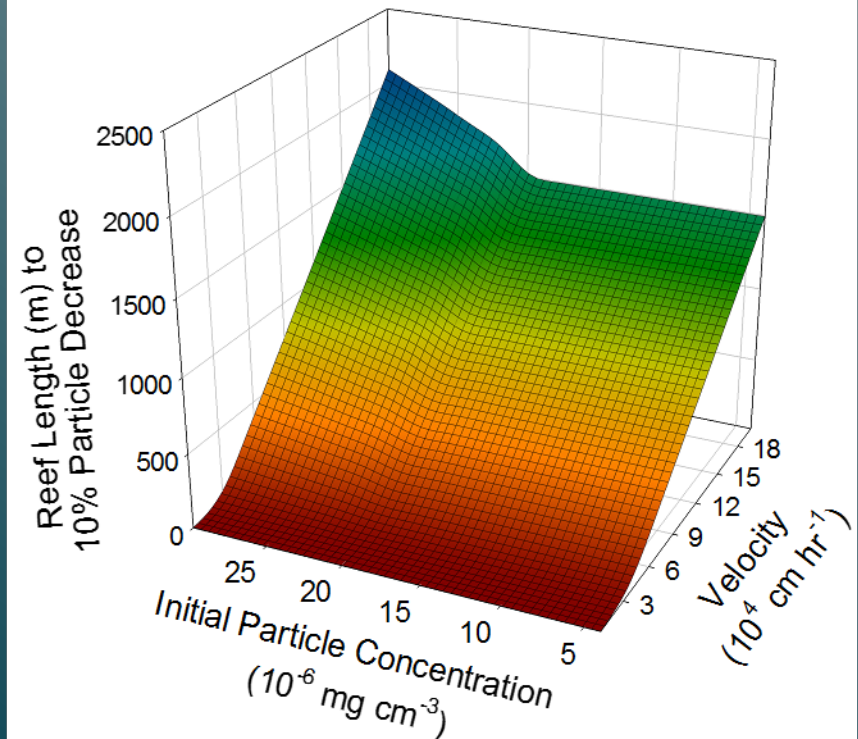


Implications for restoration design

700 oysters m^{-2}



50 oysters m^{-2}

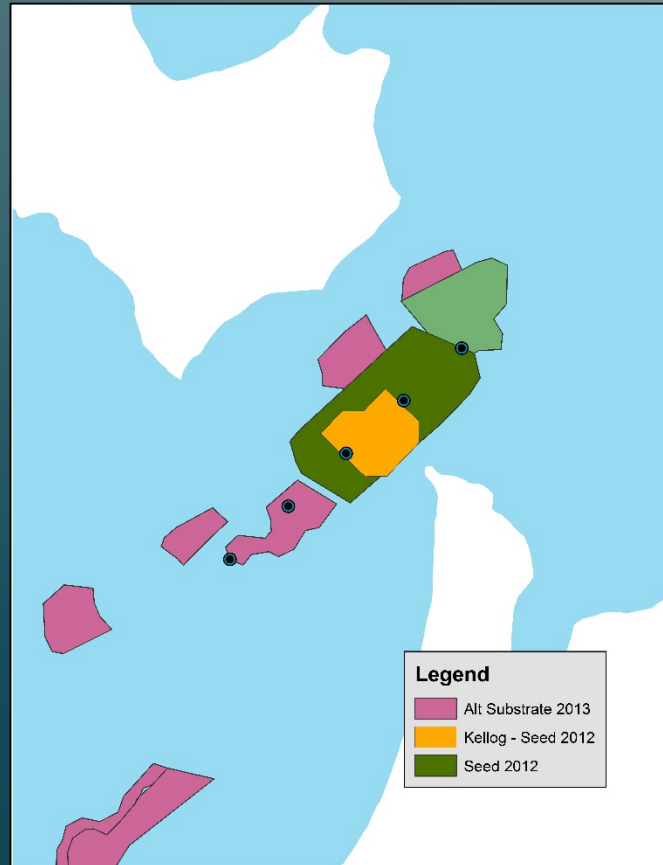
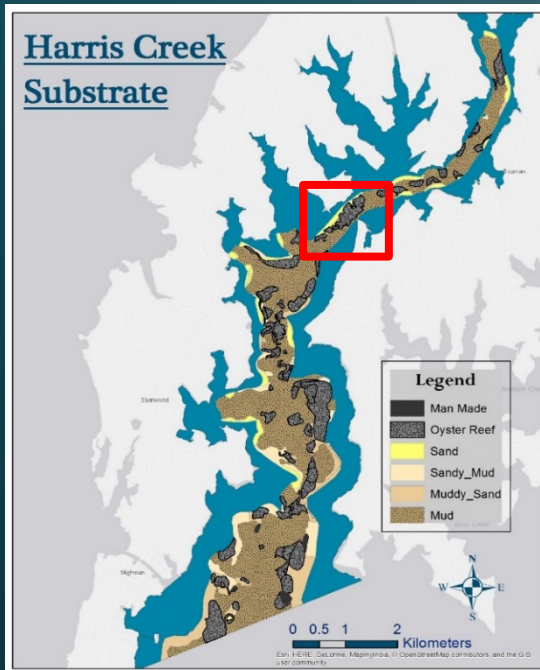


Model Validation – Little Neck Reef

Instruments:

- Acoustic Doppler Profiler
- Laser In-Situ Scattering Transmissometer
- CTD profiler – Optical Backscatter Sensor

Little Neck Reef:



Discrete sampling
stations on Little
Neck Reef,

Different areas fo
the reef have
been subject to
different
restoration
methods



Site 1

Site 2

Site 3

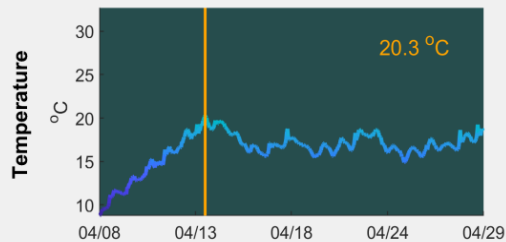
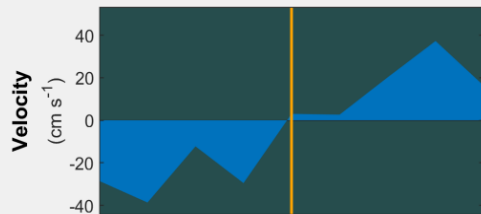
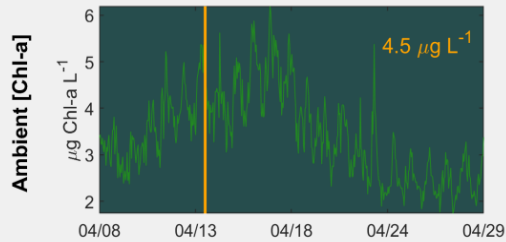
Site 4

Site 5

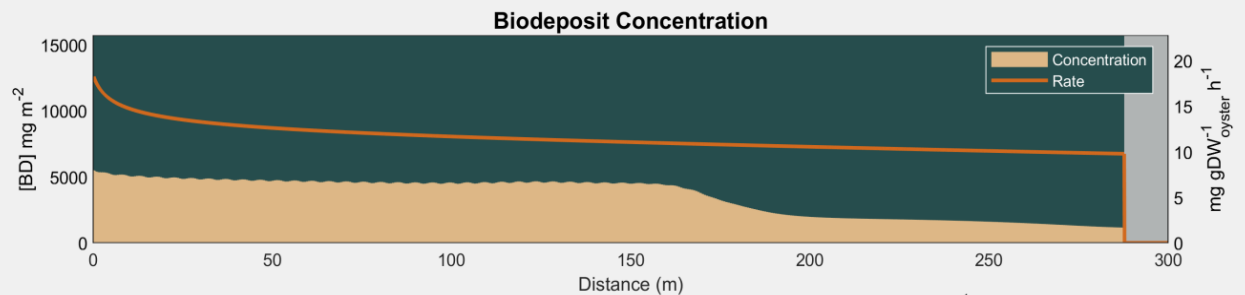
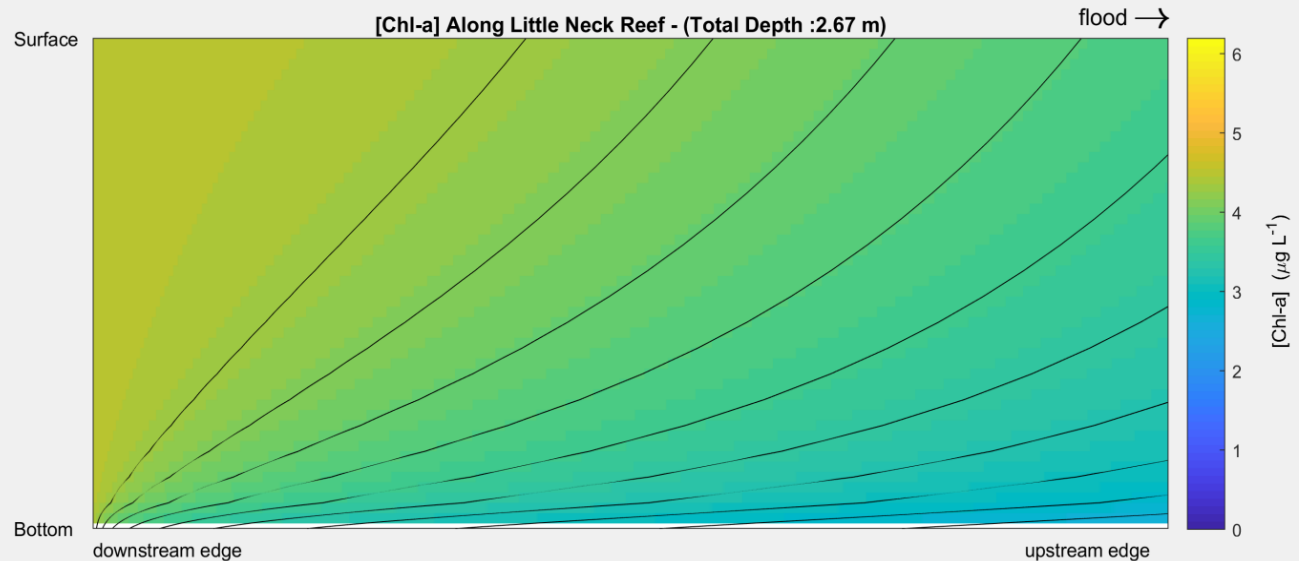
Tidal Direction

Schematic that depicts the planned sampling regime over the Harris Creek oyster reef (graphic by Givens and Kahover)

Model Simulation

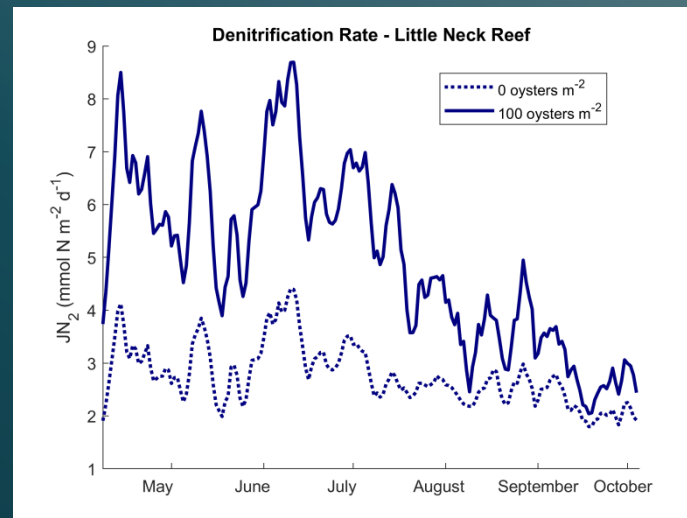
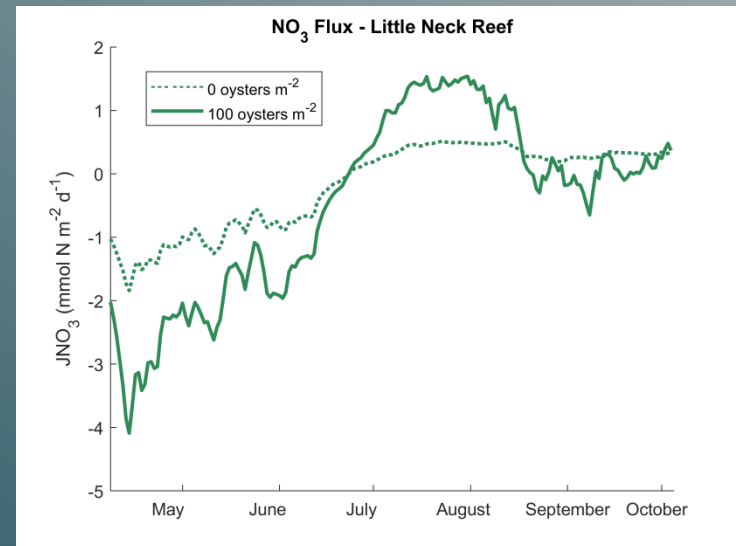
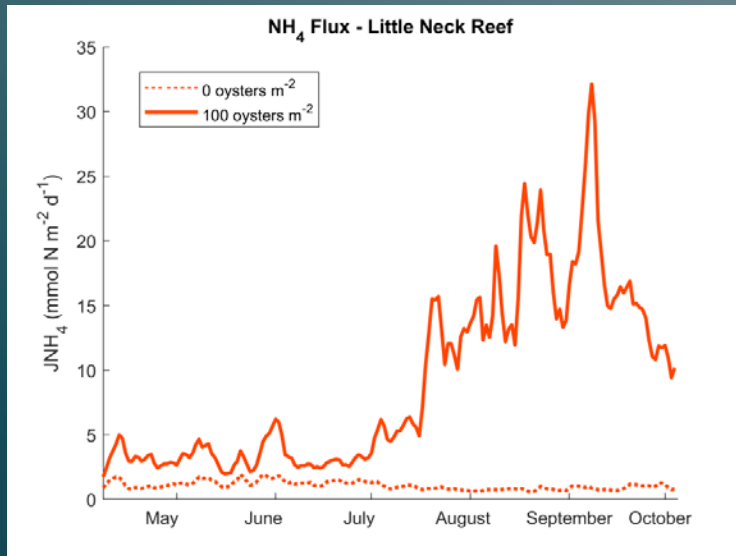


April 15, 2010 1:00 AM



** Light grey areas indicate locations on the reef where biodeposition did not occur ($\text{TSS} < 5 \parallel > 50 \text{ mg L}^{-1}$)

Model Simulation



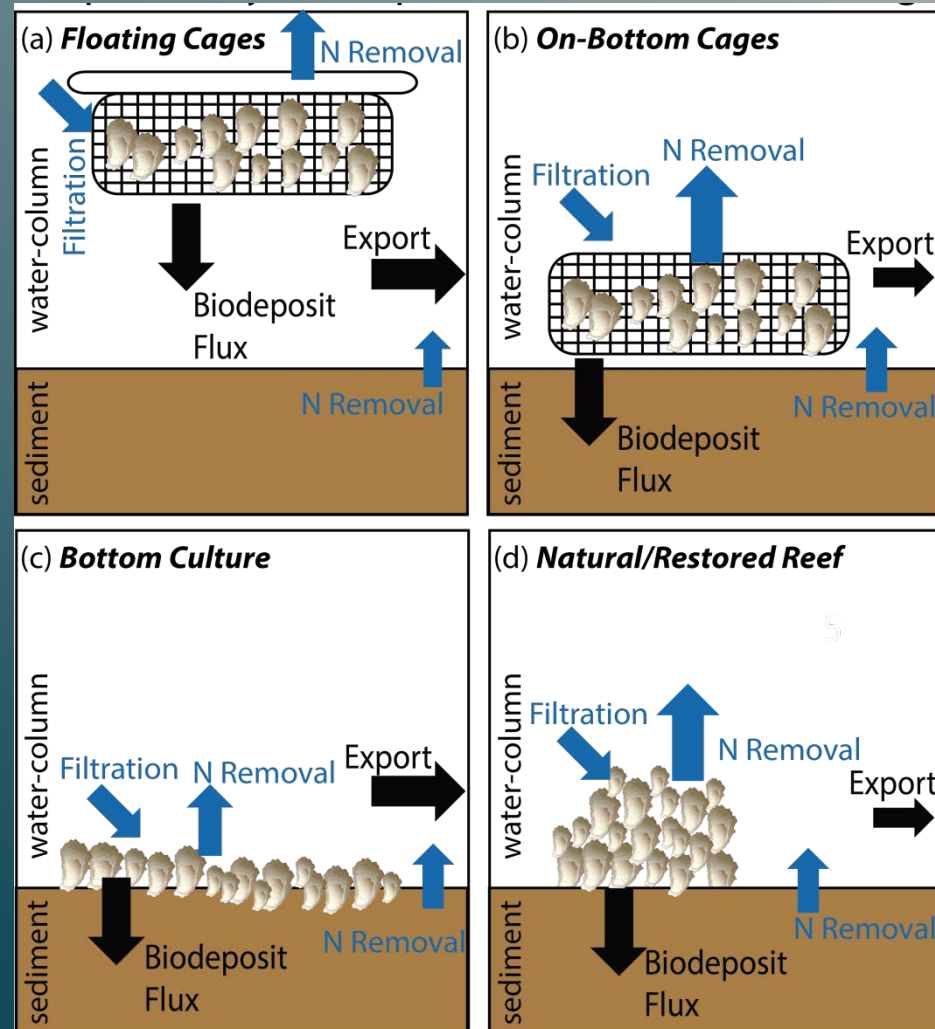
Take Home Messages

- Oysters interact with tidal waters, impacting both local hydrodynamics and particle concentrations in proportion to size and density
- The sediment flux model predicts a large impact on ammonium fluxes as a result of oysters, changing these from nearly zero to in excess of $25 \text{ mmol N m}^{-2} \text{ d}^{-1}$
- Nitrate fluxes are not significantly changed by the presence of oysters
- Denitrification rates increase three times background levels, and are comparable to observations by Jackson et al. (2018) $4.8 - 14.4 \text{ mmol N m}^{-2} \text{ d}^{-1}$
- Increased ammonium fluxes were not matched by denitrification rates, suggesting a net release of nitrogen from biodeposits to the water column

Ongoing Work: Apply ReefBioDES in A Variety of Oyster Aggregations



“Quantifying nitrogen removal potential in oyster reefs versus aquaculture in response to hydrodynamic setting and water quality”



Acknowledgments

<https://ceem.cbl.umces.edu/>



Mindy Forsyth



University of Maryland
CENTER FOR ENVIRONMENTAL SCIENCE



Funding for this
project was provided
by NOAA's
Chesapeake Bay
Office

NCBO Field Team

PJ Klavon

Jay Lazar

Andrew McGowan

David Bruce