

PHYTOPLANKTON AND ZOOPLANKTON MONITORING DATABASE: Version 3.0

DATABASE DESIGN DOCUMENTATION AND DATA DICTIONARY



Prepared for:
United States Environmental Protection Agency
Chesapeake Bay Program
410 Severn Avenue
Annapolis, Maryland 21403



Prepared By:
Interstate Commission on the Potomac River Basin
6110 Executive Boulevard, Suite 300
Rockville, Maryland 20852

Prepared for

United States Environmental Protection Agency
Chesapeake Bay Program
410 Severn Avenue
Annapolis, MD 21403

By

Jacqueline Johnson
Interstate Commission on the Potomac River Basin

To receive additional copies of the report please call or write:
The Interstate Commission on the Potomac River Basin
6110 Executive Boulevard, Suite 300
Rockville, Maryland 20852
301-984-1908

Funds to support the document Phytoplankton And Zooplankton Monitoring Database: Version 3.0; Database Design Documentation And Data Dictionary was supported by the US Environmental Protection Agency Grant CB-XXXXXXXX-XX

Disclaimer

The opinion expressed are those of the authors and should not be construed as representing the U.S. Government, the US Environmental Protection Agency, the several states or the signatories or Commissioners to the Interstate Commission on the Potomac River Basin: Maryland, Pennsylvania, Virginia, West Virginia or the District of Columbia.

TABLE OF CONTENTS

BACKGROUND.....	3
INTRODUCTION.....	3
PHYTOPLANKTON AND ZOOPLANKTON MONITORING DATA	3
RELATIONAL DATABASE CONCEPTS	4
RELATIONAL DATABASE STRUCTURE	4
PHYTOPLANKTON AND ZOOPLANKTON DATABASE STRUCTURE.....	6
PRIMARY DATA TABLES	6
TAB_BIOTA_EVENT	6
TAB_BIOMASS_SETVOL.....	7
TAB_PHYTO_PICO	8
TAB_PRIMARY_PROD	10
TAB_ZOO_TAX	11
TAB_IBI_METRICS.....	12
TAB_PHYTO_INDICATOR_METRICS.....	13
PRINCIPAL LOOK-UP TABLES	16
TAB_CBP_BASINS.....	16
TAB_CBP_MSTR.....	17
TAB_DATA_TYPE	18
TAB_FIPS	19
TAB_G_METHOD.....	21
TAB_HUCS8.....	22
TAB_IBI_PARAMETER	23
TAB_IBI_SALZONE	23
TAB_LAYER	24
TAB_LIFE_STAGE	24
TAB_LL_DATUMS	26
TAB_METHODS	26
TAB_PARAMETERS	26
TAB_QUALIFIERS.....	27
TAB_SALZONES	27
TAB_SAMPLE_TYPES.....	28
TAB_SEGS_1985	29
TAB_CBSEGS_2003	29
TAB_SOURCES	31
TAB_STATIONS	31
TAB_VALUE_TYPE	34
SECONDARY LOOK-UP TABLES	35
TAB_CRUISE_TABLE	35
TAB_PI_SPECIES_LIST.....	39
APPENDIX A. DATABASE ENTITY RELATIONSHIP DIAGRAM.....	41

BACKGROUND

In 1996, the Chesapeake Executive Counsel adopted the "Strategy for Increasing Basin-wide Public Access to Chesapeake Bay Information". This strategy calls for the Chesapeake Bay Program partners to develop the Chesapeake Bay Information Management System (CIMS). CIMS will electronically link a variety of information sources about the Bay and rivers and make this information available to anyone—from students, to scientists, to citizens groups—electronically through the Internet and World Wide Web. The information targeted by CIMS includes technical and public information, educational material, environmental indicators, policy documents and scientific data.

As a result of the CIMS initiative, the Bay Program is working to establish a system of distributed databases. In the ideal system, a CBP database would be created and managed by the data originator, reside with the data originator, and made directly available from the data originator's institution on an Internet server. This system has several advantages over the traditional single data repository. Primarily, the people with the most expertise and knowledge about the data, the originators, will manage the data. Additional advantages include reduced cost due to elimination of intermediate data handling at a central repository, and decreased time between collection and release of the data.

The key to the success of a distributed data management system lies in the willingness of the data generators to take responsibility for the quality and maintenance for their data as well as and in their adherence to the established data standards. As part of the implementation of CIMS, the Living Resources Biological Data Management program has chosen to design a series of relational database structures for managing various types of Chesapeake Bay related Monitoring data. Once developed, these database designs are populated with the existing data and were intended to be turned over to the data generators for long term maintenance. The advantage of this implementation scheme is that the data generators of like data types will be running databases of identical structure. The use of these identical database structures will facilitate implementing search engines and combining data from multiple sources. The design of these databases has been done as a joint effort between the data generators and the CBP technical staff. The participation of the data generators in this process has provided critical expertise about the data and its usage, producing a better database.

The original Phytoplankton and Zooplankton Monitoring Database was designed in 1995 using Microsoft Access. The data base was migrated in to Microsoft SQL server in September 2007. During this migration, minor modifications were made to tables and fields to accommodate SQL Server and maintain continuity where possible with the Chesapeake Bay program Tidal Water Quality Monitoring Database. This updated document is not intended to provide a complete discussion of the concepts of a relational database. Instead, this document describes in detail the Phytoplankton and Zooplankton Monitoring Database's revised structural design.

INTRODUCTION

PHYTOPLANKTON AND ZOOPLANKTON MONITORING DATA

The states of Maryland and Virginia, in cooperation with the US EPA Chesapeake Bay Program, have conducted baseline monitoring of the lower trophic levels in the Chesapeake Bay and its tidal tributaries since 1984. These programs are designed to give comprehensive spatial and temporal information on phytoplankton composition and abundance; picoplankton abundance; primary production rates; microzooplankton composition and abundance; and mesozooplankton composition, biomass and abundance. These monitoring programs are performed in conjunction with the water quality monitoring programs in both jurisdictions. All Maryland monitoring programs began in July of 1984. The Virginia Phytoplankton and mesozooplankton monitoring programs began in 1985, primary production and picoplankton monitoring

began in 1989, and microzooplankton monitoring began in 1993. All sampling for mesozooplankton and microzooplankton was discontinued in October 2002 in both states.

RELATIONAL DATABASE CONCEPTS

In a relational database, data is stored in tables, which are linked to one another by common fields. Most tables are related to one another in a series of one to many relationships. In this type of arrangement, the one record in the "Parent" or one table is related to many records in the "child" or many table. The common fields are set as primary and/or foreign keys. The creation of relationships between tables using key fields allows for the enforcement of referential integrity. Referential integrity prohibits the data manager from entering records into a child table containing a foreign key for which there is not an associated primary key in the parent table. This database also employs the use of auto-generated key field. An auto generated key field cannot be edited; it is a unique, sequential or random number automatically assigned to each new record added to the table. In the case of this database, auto-generated keys are assigned to unique records based on a combination of fields in the parent table. The auto-generated key is then added to a child table as part of its primary key. The principle advantage of an auto-generated key is that once assigned a table can be indexed and linked on one field instead of the combination of fields used to determine a unique record. This serves to increase the efficiency of the database and decrease data recovery time.

The following relational data structure for the Living Resource Monitoring data contains description of the primary data tables as well as the numerous lookup tables required to define in detail the codes contained in the primary tables. The primary tables contain the bulk of the data in the database and are generally related to one another by multiple key fields. The primary tables in the Plankton database are TAB_BIOTA_EVENT, TAB_BIOMASS_SETVOL, TAB_IBI_METRICS, TAB_PHYTO_INDICATOR_METRICS, TAB_PHYTO_PICO, TAB_PRIMARY_PROD, AND TAB_ZOO_TAX. Information related specifically to monitoring stations (e.g. latitude, longitude, basin, etc.) is stored in the TAB_STATIONS table. Information related specifically taxonomic names of organisms is stored in the TAB_CBP_MSTR table. When a data provider collects a biological sample at a station, information related to sampling event is stored in the TAB_BIOTA_EVENT table. Parameter values obtained from field measurements or laboratory analysis will be stored in the TAB_BIOMASS_SETVOL, TAB_PHYTO_PICO, TAB_PRIMARY_PROD, or TAB_ZOO_TAX table depending upon its type. Information contained in the associated look-up tables supports the referential integrity of the database.

RELATIONAL DATABASE STRUCTURE

The following relational data structure for water quality data contains descriptions of the primary data tables as well as the numerous lookup tables required to define in detail the codes contained in the primary tables. The table columns in this document used to describe the fields in the database tables are described below.

FIELD - This column contains the field name in the database table as well as the designation of the field as either a primary key (PK), a foreign key (FK), a not null (NN) field, a unique field (U) or a auto-generated key field (AK). Primary, foreign and auto-generated key fields, by definition, are not null fields. However primary and foreign keys may contain zero length value fields. Fields which are neither primary nor foreign key fields, but which have been designated as not null or unique are those fields deemed essential to certain applications of the database.

DESCRIPTION - This column contains a definition of the database table field.

TYPE (FORMAT) - This column specifies the field type as character, number, or date/time; it also includes the format of the field and the precision of the text value where appropriate. Currently accepted data types in Microsoft SQL server used in the plankton database include the following.

Exact numeric's

Type	From	To
BIGINT	-9,223,372,036,854,775,808	9,223,372,036,854,775,807
INT	-2,147,483,648	2,147,483,647
SMALLINT	-32,768	32,767
TINYINT	0	255
BIT	0	1
DECIMAL	-10 ³⁸ +1	10 ³⁸ -1
NUMERIC	-10 ³⁸ +1	10 ³⁸ -1

numeric and decimal are Fixed precision and scale data types and are functionally equivalent.

datetime and smalldatetime

Type	From	To
DATETIME (3.33 milliseconds accuracy)	Jan 1, 1753	Dec 31, 9999
SMALLDATETIME (1 minute accuracy)	Jan 1, 1900	Jun 6, 2079

Character Strings

Type	Description
CHAR	Fixed-length non-Unicode character data with a maximum length of 8,000 characters.
VARCHAR	Variable-length non-Unicode data with a maximum of 8,000 characters.
TEXT	Variable-length non-Unicode data with a maximum length of 2,147,483,647 characters.

LENGTH (BYTES) - This column specifies the maximum character length of a field as well as the internal database storage requirement.

PHYTOPLANKTON AND ZOOPLANKTON DATABASE STRUCTURE

PRIMARY DATA TABLES

Within the current design, the primary tables are the TAB_BIOTA_EVENT TABLE, BIOMASS_SETVOL TABLE , TAB_PHYTO_PICO TABLE, TAB_PRIMARY_PROD TABLE ,TAB_ZOO_TAX TABLE, TAB_IBI_METRICS and TAB_PHYTO_INDICATOR_METRICS. The BIOTA EVENT TABLE contains all sampling event data for all types of sample collection events. The remaining table all store data of the type designated in the table name.

TAB_BIOTA_EVENT

Field Name	Description	Data Type	Length
SURVEY_ID (AK,PK)	PRIMARY_ID KEY- (STATION+SAMPLE_DATE+SAMPLE_TIME+ SOURCE+LAYER+DATA_TYPE)	INTEGER	
STATION (PK,NN,FK)	SAMPLING STATION- Sampling station identifier	VARCHAR	15
SAMPLE_DATE _TIME (PK,NN)	SAMPLING DATE/TIME- Date and time of sample collection	DATE/TIME	8
LAYER (PK,NN,FK)	LAYER- Layer of Water Column in which Sample was Taken	CHAR	3
SOURCE (PK,NN,FK)	AGENCY/CONTRACTOR DATA SOURCE CODE- Code identifying data generator	VARCHAR	10
DATA_TYPE (PK,NN)	SAMPLE TYPE CODE- Denotes type of biological sample collected	CHAR	2
SAMPLE_TYPE (PK,NN,FK)	SAMPLE COLLECTION TYPE CODE Denotes type of sample collected for analysis of a given Data_type	VARCHAR	2
TOTAL_DEPTH	TOTAL STATION DEPTH- Total Station Depth in Meters	DECIMAL	
P_DEPTH	COMPOSITE SAMPLE CUT-OFF DEPTH- Depth used as the cutoff depth between upper (AP) and lower (BP) LAYERS during a sampling event.	DECIMAL	
TOTAL_ SAMPLE_ VOLUME (NN)	TOTAL VOLUME OF SAMPLE	DECIMAL	
TOTAL_ SAMPLE_ VOLUME_ UNITS (NN)	REPORTING UNITS OF SAMPLE VOLUME	DECIMAL	

Field Name	Description	Data Type	Length
G_METHOD (FK)	GEAR METHOD CODE- Code of Sampling Gear used for sample collection	CHAR	3
SALZONE (FK)	SALINITY ZONE- Salinity classification of water column in which sample was collected, based on Venice Classification system.	CHAR	2
R_DATE (NN)	DATA VERSION DATE- Date denoting when data records were entered in to database	DATE/TIME	8
SAMPLE_DATE	SAMPLE COLLECTION DATE ONLY- Date on which the sample was collected (calculated field)	TEXT	10
SAMPLE_TIME	SAMPLE COLLECTION TIME ONLY-Time (24 hour) which the sample was collected (calculated field)	TEXT	20

Notes:

1) GENERAL: Every event for which there were sample taken of any kind must have a record in this table. Event records must be loaded into the database first and all unique records are assigned a SURVEY_ID number. The SURVEY_ID must then be merged onto all other data based on the key fields before data may be loaded into any other primary data tables.

2) SURVEY ID: The actual primary key for this table is a composite key base on the following fields: STATION, SAMPLE_DATE_TIME, LAYER, SOURCE AND DATA_TYPE. An Auto-Key number is generated for each unique combination of these fields.

3) SAMPLE TIME: Sampling events where sample collection time is missing, SAMPLE_TIME has been set to 00:00 (Mid-Night).

TAB_BIOMASS_SETVOL

Field Name	Description	Data Type	Length
SURVEY_ID (PK,FK)	PRIMARY_ID KEY- AN AUTO-GENERATED FIELD	INT	
SAMPLE_NUMBER (PK)	SAMPLE NUMBER- Number of sample collected at Station(replicate number)	TINYINT	
METHOD (PK, FK)	METHOD CODE- Method code identifying field/laboratory analysis procedure	CHAR	6
VALUE_TYPE (FK)	ACTUAL OR ESTIMATED VALUE TYPE CODE- Code for measurement type	CHAR	1
REPORTING_PARAMETER (PK)	REPORTING_PARAMETER- Biological monitoring parameter code	VARCHAR	15

Field Name	Description	Data Type	Length
REPORTING_ VALUE (NN)	PARAMETER VALUE	DECIMAL	
REPORTING_ UNITS (NN)	REPORTING UNITS OF PARAMETER	VARCHAR	25
SER_NUM	SOURCE SAMPLE SERIAL NUMBER	VARCHAR	12
R_DATE	DATA VERSION DATE- Date denoting when data records were entered in to database	SMALL DATETIME	

NOTES:

1) GENERAL: This table stores information relating to measurements of zooplankton biomass and settled volumes. This table assumes that all biomass or zooplankton volume information is derived directly from zooplankton tows or estimated after correcting for the presence of detritus. This table assumes that all biomass and volume information is from composite samples. The maximum depth at which water making up a sample was derived from is assumed to be TOTAL_DEPTH (from TAB_BIOTA_EVENT TABLE) minus 0.5 meters for all whole water column samples. AP (Above Pycnocline samples) are derived from water taken between 0.5 meters below the surface and 0.5 meters ABOVE the P_DEPTH (from TAB_BIOTA_EVENT TABLE). BP (Below Pycnocline samples) are derived from water taken between 0.5 meters above the bottom (TOTAL_DEPTH) and 0.5 meters BELOW the P_DEPTH (from TAB_BIOTA_EVENT TABLE).

2) SURVEY_ID: The primary key for this table is a composite key base on the following fields: STATION, SAMPLE_DATE_TIME, SOURCE, DATA_TYPE, SAMPLE_NUMBER, METHOD, VALUE_TYPE, and PARAMETER. The composite key of SURVEY_ID is base on the combination following fields: STATION, SAMPLE_DATE_TIME, LAYER, SOURCE AND DATA_TYPE. An Auto-Key number is generated for each unique combination of these fields in the TAB_BIOTA_EVENT TABLE and must be merged on to data before it can be loaded into this table.

TAB_PHYTO_PICO

Field Name	Description	Data Type	Length
SURVEY_ID (PK,FK)	PRIMARY_ID KEY- AN AUTO-GENERATED FIELD	INT	
SAMPLE_ NUMBER (PK)	SAMPLE NUMBER- Number of sample collected at Station(replicate number)	TINYINT	
METHOD (PK,FK)	METHOD CODE- Method code identifying field/laboratory analysis procedure	CHAR	6
TSN (PK,FK)	TAXON SERIAL NUMBER- ITIS Serial Number for Species Identification	CHAR	7

Field Name	Description	Data Type	Length
SIZE_RANGE (PK)	SPECIES SIZE FRACTION- Additional species identifier	VARCHAR	30
REPORTING_PARAMETER (PK)	PARAMETER- Name identifying parameter	VARCHAR	30
REPORTING_VALUE (NN)	PARAMETER VALUE	DECIMAL	
REPORTING_UNITS (NN)	REPORTING UNITS OF PARAMETER	VARCHAR	25
SPEC_CODE	SOURCE INHOUSE SPECIES CODE	VARCHAR	14
SER_NUM	SOURCE SAMPLE SERIAL NUMBER	VARCHAR	12
R_DATE	DATA VERSION DATE- Date denoting when data records were entered in to database	SMALL DATETIME	

NOTES:

GENERAL: This table stores information relating to measurements of Phytoplankton and Picoplankton species abundance and composition. This database uses the Interagency Taxonomic Identification System (ITIS) Taxon Serial Numbers (TSN) for species identification within the database. For species with no TSN values temporary Chesapeake Bay TSN's are generated until a species can be submitted to ITIS for recognition. If no taxonomic analysis was performed on a sample, there should be no records present for that sample in this table. The maximum depth at which water making up a sample was derived from is assumed to be TOTAL_DEPTH (from TAB_BIOTA_EVENT TABLE) minus 0.5 meters for all whole water (Layer = WC) column samples. Above Pycnocline samples (Layer =AP) are derived from water taken between 0.5 meters below the surface and 0.5 meters ABOVE the P_DEPTH (from TAB_BIOTA_EVENT TABLE). Below Pycnocline samples (Layer =BP) are derived from water taken between 0.5 meters above the bottom (TOTAL_DEPTH) and 0.5 meters BELOW the P_DEPTH (from TAB_BIOTA_EVENT TABLE). The type of organism targeted in a count (Phytoplankton or Picoplankton) is expressed in the method code.

2) SURVEY_ID: The primary key for this table is a composite key base on the following fields: STATION, SAMPLE_DATE_TIME, SOURCE, DATA_TYPE, SAMPLE_NUMBER, METHOD, VALUE_TYPE, and PARAMETER. The composite key of SURVEY_ID is base on the combination of the following fields: STATION, SAMPLE_DATE_TIME, LAYER, SOURCE AND DATA_TYPE. An Auto-Key number is generated for each unique combination of these fields in the TAB_BIOTA_EVENT TABLE and must be merged on to data before it can be loaded into this table.

TAB_PRIMARY_PROD

Field Name	Description	Data Type	Length
SURVEY_ID (PK,FK)	PRIMARY_ID KEY- AN AUTO-GENERATED FIELD	INT	
SAMPLE_NUMBER (PK,FK)	SAMPLE NUMBER- Number of sample collected at Station(replicate number)	TINYINT	
CARBFIX	CARBON FIXATION RATE	REAL	
REPORTING_UNITS	REPORTING UNITS OF CARBON FIXATION	VARCHAR	25
QUALIFIER (FK)	PARAMETER QUALIFIER CODE- Code identifying the parameter value as less than or greater than the method detection limits	CHAR	2
METHODS (FK)	METHOD CODE- Method code identifying field/laboratory analysis procedure	CHAR	6
CHLA	CHLOROPHYLL A (MICROGRAMS/LITER)	DECIMAL	
ASMRATIO	PRODUCTION EFFICIENCY (MICROGRAMS CARBON PER MICROGRAM CHLOROPHYLL A)	DECIMAL	
SER_NUM	SOURCE SAMPLE SERIAL NUMBER	TEXT	12
R_DATE	DATA VERSION DATE- Date denoting when data records were entered in to database	SMALL DATETIME	

NOTES:

GENERAL: This table stores information relating to measurements of Primary Production rates and efficiency. This table assumes that all information is from composite Above Pycnocline samples. Waters making up AP (Above Pycnocline samples) are derived from water taken between 0.5 meters below the surface and 0.5 meters ABOVE the P_DEPTH (from TAB_BIOTA_EVENT TABLE). Note that either CARBFIX or CHLA must not be null to have a valid record. Both CARBFIX and CHLA must have values in order to have an ASMRATIO.

2) SURVEY ID: The primary key for this table is a composite key base on the following fields: STATION, SAMPLE_DATE_TIME, SOURCE, DATA_TYPE, SAMPLE_NUMBER, METHOD, VALUE_TYPE, and PARAMETER. The composite key of SURVEY_ID is base on the combination following fields: STATION, SAMPLE_DATE_TIME, LAYER, SOURCE AND DATA_TYPE. An Auto-Key number is generated for each unique combination of these fields in the TAB_BIOTA_EVENT TABLE and must be merged on to data before it can be loaded into this table.

TAB_ZOO_TAX

Field Name	Description	Data Type	Length
SURVEY_ID (PK,FK)	PRIMARY_ID KEY- AN AUTO-GENERATED FIELD	INT	
SAMPLE_NUMBER (PK)	SAMPLE NUMBER- Number of sample collected at Station(replicate number)	TINYINT	
METHOD (PK,FK)	METHOD CODE- Code identifying the lab method used to enumerate biological sample	CHAR	6
TSN (PK,FK)	TAXON SERIAL NUMBER- ITIS Serial Number for Species Identification	CHAR	7
LIFE_STAGE (PK,FK)	SPECIES LIFE STAGE CODE- Chesapeake bay program species life stage code	CHAR	2
PARAMETER_VALUE (PK,FK)	PARAMETER VALUE- Biological monitoring parameter name.	VARCHAR	15
REPORTED_VALUE (NN)	REPORTED_VALUE	DECIMAL	
UNITS (NN)	REPORTING UNITS OF PARAMETER	VARCHAR	15
SPEC_CODE	SOURCE INHOUSE SPECIES CODE	VARCHAR	14
SER_NUM	SOURCE SAMPLE SERIAL NUMBER	VARCHAR	12
R_DATE	DATA VERSION DATE- Date denoting when data records were entered in to database	SMALL DATETIME	

NOTES:

GENERAL: This table stores information relating to measurements of zooplankton, microzooplankton and Gelatinous zooplankton abundance and composition. This database uses the Interagency Taxonomic Identification System (ITIS) Taxon Serial Numbers (TSN) for species identification within the database. For species with no TSN values temporary Chesapeake Bay TSN's are generated until a species can be submitted to ITIS for recognition. If no taxonomic analysis was performed on a sample, there should be no records present for that sample in this table. The maximum depth at which water making up a sample was derived from is assumed to be TOTAL_DEPTH (from TAB_BIOTA_EVENT TABLE) minus 0.5 meters for all whole water (Layer =WC) column samples. Above Pycnocline samples (Layer =AP) are derived from water taken between 0.5 meters below the surface and 0.5 meters ABOVE the P_DEPTH (from BIOTA_EVENT TABLE). Below Pycnocline samples (Layer =BP) are derived from water taken between 0.5 meters above the bottom (TOTAL_DEPTH) and 0.5 meters BELOW the P_DEPTH (from TAB_BIOTA_EVENT TABLE).

The type of organism targeted in a count (ex gelatinous zooplankton, mesozooplankton or microzooplankton) is expressed in the method code.

2) SURVEY_ID: The primary key for this table is a composite key base on the following fields: STATION, SAMPLE_DATE_TIME, SOURCE, DATA_TYPE, SAMPLE_NUMBER, METHOD, VALUE_TYPE, and PARAMETER. The composite key of SURVEY_ID is base on the combination following fields: STATION, SAMPLE_DATE_TIME, LAYER, SOURCE AND DATA_TYPE. An Auto-Key number is generated for each unique combination of these fields in the BIOTA_EVENT TABLE and must be merged on to data before it can be loaded into this table.

TAB_IBI_METRICS

Field Name	Description	Data Type	Length
SURVEY_ID (PK,FK)	PRIMARY_ID KEY- AN AUTO-GENERATED FIELD	INT	
STATION (PK,NN,FK)	SAMPLING STATION- Sampling station identifier	VARCHAR	15
SAMPLE_DATE_ TIME (PK,NN)	SAMPLING DATE/TIME- Date and time of sample collection	SMALLDATE TIME	
SAMPLE_NUMBER (PK)	SAMPLE NUMBER- Number of sample collected at Station(replicate number)	TINYINT	
IBI_PARAMETER (PK, FK)	IBI PARAMETER- Name of IBI Metric parameter	VARCHAR	25
IBI_VALUE	IBI_VALUE- IBI metric parameter reported value.	DECIMAL	
IBI_SCORE	IBI SCORE VALUE- IBI metric reported IBI score value.	DECIMAL	
IBI_SALZONE (FK, NN)	IBI SALINITY ZONE-IBI site salinity zone classification	CHAR	1
IBI_LAYER (NN)	IBI SAMPLING LAYER- IBI water column layer classification.	CHAR	2
R_DATE (NN)	DATA VERSION DATE- Date denoting when data records were entered in to database	SMALLDATE TIME	
SEASON (NN)	IBI SEASON CLASS-IBI season classification	CHAR	6

1) GENERAL: This table stores calculated Phytoplankton Index of Biotic Integrity (PIBI) metrics and scored values. The PIBI's are calculated based on the published in Lacouture RV, Johnson JM, Buchanan C, Marshall HG (2006) Phytoplankton Index of Biotic Integrity for Chesapeake Bay and its Tidal Tributaries. Estuaries and Coasts: Vol. 29, No. 4 pp. 598–616. For more details on the calculation of specific parameters included in the database see the document: Methodology Applied in the Calculation of Chesapeake Bay Program Phytoplankton Composite Metrics and Index of Biotic Integrity (PIBI) (url to be determined).

2) SURVEY_ID: Once the SURVEY_ID number is merged on to this table based on STATION, SAMPLE_DATE, SAMPLE_TIME and SOURCE the fields may be deleted. The actual primary key for this table is a composite key composed of the following field: STATION, SAMPLE_DATE_TIME, SOURCE, SAMPLE NUMBER and IBI_PARAMETER..

3) IBI_LAYER: The current Chesapeake Bay PIBI is valid for only above pycnocline (AP) or whole water column sample. For data processing purposes WC sample have been reassign a layer code of AP, but are still matched to the appropriate WC TAB_BIOTA_EVENT survey_id event.

4) SEASON: The current Chesapeake Bay PIBI is a seasonal index. There are currently two index periods SPRING (March, April, May) and SUMMER(July, August, September). Sampling events are assigned to a season by sample_date.

TAB_PHYTO_INDICATOR_METRICS

Field Name	Description	Data Type	Length
SURVEY_ID	PRIMARY_ID KEY (STATION+DATE+TIME+LAYER+SOURCE+DATATYPE+SAMPLE_TYPE)	INT	
STATION	CBP SAMPLING STATION	VARCHAR	15
SAMPLE_DATE	PHYTOPLANKTON SAMPLING DATE	SMALLDATETIME	
UP_DATE	UPPER END OF 3 DAY DATA MATCHING WINDOW	SMALLDATETIME	
DN_DATE	LOWER END OF 3 DAY DATA MATCHING WINDOW	SMALLDATETIME	
WQ_DATE	WATER QUALITY SAMPLING DATE	SMALLDATETIME	
SEASON	CBP SEASON DESIGNATION	CHAR	6
IBI_LAYER	SAMPLE LAYER	CHAR	2
IBI_SALZONE	WATER LAYER SALINITY ZONE DESIGNATION	CHAR	1
CHL_SURF	SURFACE CHLOROPHYLL A (0.5 M) UG/L	DECIMAL	
CHLORO_ABUND	TOTAL CHLOROPHYTE ABUNDANCE IN NUMBER/LITER	DECIMAL	
CHLORO_BIOMASS	TOTAL CHLOROPHYTE BIOMASS IN UG CARBON/LITER	DECIMAL	
CHRYSO_ABUND	TOTAL CHRYSOPHYTE ABUNDANCE IN NUMBER/LITER	DECIMAL	
CHRYSO_BIOMASS	TOTAL CHRYSOPHYTE BIOMASS IN UG CARBON/LITER	DECIMAL	
COCHLODINIUM_HET_ABUND	TOTAL COCHLODINIUM ABUNDANCE IN NUMBER/LITER	DECIMAL	
COCHLODINIUM_HET_BIOMASS	TOTAL COCHLODINIUM BIOMASS IN UG CARBON/LITER	DECIMAL	
CRYPTO_ABUND	TOTAL CRYPTOPHYTE ABUNDANCE IN NUMBER/LITER	DECIMAL	

Field Name	Description	Data Type	Length
CRYPTO_BIOMASS	TOTAL CRYPTOPHYTE BIOMASS IN UG CARBON/LITER	DECIMAL	
CYANO_ABUND	TOTAL CYANOPHYTE ABUNDANCE IN NUMBER/LITER	DECIMAL	
CYANO_BIOMASS	TOTAL CYANOPHYTE BIOMASS IN UG CARBON/LITER	DECIMAL	
DIATOM_ABUND	TOTAL DIATOM ABUNDANCE IN NUMBER/LITER	DECIMAL	
DIATOM_BIOMASS	TOTAL DIATOM BIOMASS IN UG CARBON/LITER	DECIMAL	
DINO_ABUND	TOTAL DINOFLAGGELATE ABUNDANCE IN NUMBER/LITER	DECIMAL	
DINO_BIOMASS	TOTAL DINOFLAGGELATE BIOMASS IN UG CARBON/LITER	DECIMAL	
EUGLENO_ABUND	TOTAL EUGLENOPHYTE ABUNDANCE IN NUMBER/LITER	DECIMAL	
EUGLENO_BIOMASS	TOTAL EUGLENOPHYTE BIOMASS IN UG CARBON/LITER	DECIMAL	
HAPTO_ABUND	TOTAL HAPTOPHYTE ABUNDANCE IN NUMBER/LITER	DECIMAL	
HAPTO_BIOMASS	TOTAL HAPTOPHYTE BIOMASS IN UG CARBON/LITER	DECIMAL	
MICROCYSTIS_AER_ABUND	TOTAL MICROCYSTIS ABUNDANCE IN NUMBER/LITER	DECIMAL	
MICROCYSTIS_AER_BIOMASS	TOTAL MICROCYSTIS BIOMASS IN UG CARBON/LITER	DECIMAL	
PICO_ABUND	TOTAL PICOPLANKTON ABUNDANCE IN NUMBER/LITER	DECIMAL	
PICO_BIOMASS	TOTAL PICOPLANKTON BIOMASS IN UG CARBON/LITER	DECIMAL	
PRASINO_ABUND	TOTAL PRASINOPHYTE ABUNDANCE IN NUMBER/LITER	DECIMAL	
PRASINO_BIOMASS	TOTAL PRASINOPHYTE BIOMASS IN UG CARBON/LITER	DECIMAL	
PROROCENTRUM_MIN_ABUND	PROROCENTRUM_MINIMUM ABUNDANCE IN NUMBER/LITER	DECIMAL	
PROROCENTRUM_MIN_BIOMASS	PROROCENTRUM_MINIMUM BIOMASS IN UG CARBON/LITER	DECIMAL	
TOT_ABUND	TOTAL PHYTOPLANKTON ABUNDANCE IN NUMBER/LITER	DECIMAL	
TOT_BIOMASS	TOTAL PHYTOPLANKTON BIOMASS IN UG CARBON/LITER	DECIMAL	
SALINITY	AVE LAYER SALINITY IN PSU	DECIMAL	
PO4	AVE LAYER PO4 CONC IN MG/L	DECIMAL	
DIN	AVE LAYER DISSOLVED ORGANIC N (NO2+NO3+NH4) IN MG/L	DECIMAL	
SECCHI	SECCHI DEPTH IN METERS	DECIMAL	
SECCHI_RANK	SECCHI DEPTH RANK-RELATIVE STATUS METHOD	VARCHAR	8
PO4_RANK	PO4 CONC RANK-TOM FISHER NUTRIENT LIMITATION THRESHOLDS	VARCHAR	8
DIN_RANK	DIN CONC RANK-TOM FISHER NUTRIENT LIMITATION THRESHOLDS	VARCHAR	8
CHLA	AVELAYER CHLA IN UG/L	DECIMAL	
DO_VALUE	AVE LAYER DISSOLVED OXYGEN IN PPM	DECIMAL	
DOC	AVE LAYER DISSOLVED ORGANIC CARBON CONC IN MG/L	DECIMAL	

Field Name	Description	Data Type	Length
PC	AVE LAYER PARTICULATE CARBON CONC IN MG/L	DECIMAL	
PHEO	AVE LAYER PHEOOHYTIN CONC IN MG/L	DECIMAL	
TSS	AVE LAYER TOTAL SUSPENDED SOLIDS	DECIMAL	
WTEMP	AVE LAYER WATER TEMP CELSIUS	DECIMAL	
TOC	AVE LAYER TOTAL ORGANIC CARBON CONC IN MG/L	DECIMAL	
BIOMASS_CHL_RATIO	TOTAL PHYTOPLANKTON BIOMASS TO AP CHL RATIO	DECIMAL	
CELL_SIZE	AVERAGE CELL SIZE PG/CELL	DECIMAL	
CRYPTO_BIO_PCT	PERCENT CRYPTOPHYTE BIOMASS	DECIMAL	
CYANO_BIO_PCT	PERCENT CYANOPHYTE BIOMASS	DECIMAL	
DIATOM_BIO_PCT	PERCENT DIATOM BIOMASS	DECIMAL	
DINO_BIO_PCT	PERCENT DINOFLAGGELATE BIOMASS	DECIMAL	
WQ_CATEGORY	FISHER WATER QUALITY CATEGORY	VARCHAR	20
R_DATE	DATA VERSION DATE	SMALLDATETIME	

1) GENERAL: This table stores composite phytoplankton metrics and commonly used water quality parameters. This table is not a normalized table, but does provide data in a format compatible with many common statistics programs. The composite metrics are calculated based on the published in Buchanan, C., R.V. Lacouture, H.G. Marshall, M. Olson and J.M. Johnson. 2005. Phytoplankton reference communities for Chesapeake Bay and its tidal tributaries. *Estuaries* 28(1): 138-159. For more details on the calculation of specific parameters included in the database see the document: Methodology Applied in the Calculation of Chesapeake Bay Program Phytoplankton Composite Metrics and Index of Biotic Integrity (PIBI) (url to be determined).

PRINCIPAL LOOK-UP TABLES

The primary tables also contain many fields containing codes that are described or defined in detail in related lookup tables. By creating one-to-many relationships between lookup tables and the primary data tables and enforcing referential integrity, data managers are restricted to entering only valid lookup table values into the primary data tables. Again, this provides an automatic layer of quality assurance that will improve the utility of the database for all users.

TAB_CBP_BASINS

Field	Description	Type	Length
CBP_BASIN (PK)	CHESAPEAKE BAY PROGRAM BASIN	VARCHAR	30
CBP_BASIN_DESCRIPTION (NN)	BASIN DESCRIPTION- Location of the monitoring station with respect to the geologic fall line or the zone of tidal influence	VARCHAR	100

GENERAL- The TAB_CBP_BASINS TABLE contains Chesapeake Bay program basins and descriptions of the Bay Program basin in which the station is located. These basin designations have been used by the Chesapeake bay Program since its inception to summarize watershed model loads from all sources. Point related data naturally fall into one of these basins, so this field has been retained in order to maintain the ability to summarize information using this scheme. For stations located within Chesapeake Bay, the CBP may want to consider assigning the most proximal CBP_BASIN to these stations as a means of providing the ability to determine cause and effect relationships. The CBP_BASIN code OUTSIDE is included because there are water quality stations as well as point source facilities located outside the watershed that are tracked for specific purposes.). The currently accepted CBP_BASINS AND DESCRIPTIONS are as follows:

CBP_BASIN	CBP_BASIN_DESCRIPTION
CHESAPEAKE BAY	Chesapeake Bay
JAMES RIVER	James River Watershed
MD EASTERN SHORE	Maryland East Of Chesapeake Bay
MD WESTERN SHORE	Maryland West Of Chesapeake Bay, Excluding The Potomac And Patuxent Watersheds
OUTSIDE	Outside Of The Chesapeake Bay Watershed
PATUXENT RIVER	Patuxent River Watershed
POTOMAC RIVER	Potomac River Watershed
RAPPAHANNOCK RIVER	Rappahannock River Watershed
SUSQUEHANNA RIVER	Susquehanna River Watershed
VA EASTERN SHORE	Virginia East Of Chesapeake Bay
VA WESTERN SHORE	Virginia West Of Chesapeake Bay, Excluding The Potomac, James, Rappahannock And York Watersheds
YORK RIVER	York River Watershed

TAB_CBP_MSTR

Field Name	Description	Data Type	Length
TSN_NUM	TAXON SERIAL NUMBER- ITIS Serial Number for Species Identification (defined as a numeric value)	INT	
TSN (PK,FK)	TAXON SERIAL NUMBER- ITIS Serial Number for Species Identification (defined as a fixed 7 character value with leading zeros)	CHAR	7
NODC_CODE	NATIONAL OCEANOGRAPHIC DATA CENTER TAXONOMIC CODES	VARCHAR	12
SYN	SYNONYM FLAG- Chesapeake Bay Program flag denoting species with synonymous name	VARCHAR	2
LATIN_NAME (NN)	SPECIES LATIN NAME- Species Latin/Scientific Name	VARCHAR	45
TAXON_LEVEL	PHYLOGENIC CLASSIFICATION- Denotes Phylogenic Level (phylum, class, order, etc)	VARCHAR	6
COMMON_NAME	COMMON NAME- Species Common Name	VARCHAR	40
R_DATE (NN)	DATA VERSION DATE- Date denoting when data records were entered in to database	SMALLDATE TIME	

General: This table stores information in relating to the identification of species in the PHYTO_PICO TABLE and the ZOO_TAX TABLE. The list includes listings for all types of organisms including phytoplankton, zooplankton, fish and benthos. This database uses the Interagency Taxonomic Identification System (ITIS) Taxon Serial Numbers (TSN) for species identification within the database. For species with no TSN values temporary Chesapeake Bay TSN's are generated until a species can be submitted to ITIS for recognition. The use of the standardized TSN codes among all Bay Program databases will allow for queries by species from multiple State and National biological databases.

TSN: Each species has been given its ITIS Taxonomic Serial Number (TSN). The ITIS (Interagency Taxonomic Information System) is a partnership of federal agencies working together to improve the organization of, and access to, standardized nomenclature. As part of this system a national, easily accessible database with reliable information on species names and their hierarchical classification has been established. The database is reviewed periodically to ensure high quality with valid classifications, revisions, and additions of newly described species. As part of this effort all Federal agencies have been asked to adopt the use of TSN code which assigns each recognized species a permanent number. The TSN allows a species to be tracked over time regardless of changes in name and taxonomic classification. TSN also provides a uniform key field for database development and species identification across multiple organizations. When used in conjunction with the NODC, the TSN overcomes the problem of numeric changes in the NODC code whenever species are reclassified. Temporary codes are assigned to taxa that are recognized in the scientific literature but have not been assigned an NODC Code and a TSN. The value bayxxx has been assigned to all taxa without TSN. A temporary NODC code is developed for each unassigned taxon based on its known taxonomy and its species name. For example, the beginning couplets of the NODC code which reflect the known phylogeny of an unassigned taxon are combined with letters from its species name to form a temporary code. The most up to date TSN numbers are available at <http://www.itis.gov/>. The most recent *Comprehensive List of Chesapeake Bay Basin Species 2007* can be found at https://archive.chesapeakebay.net/pub/Living_Resources/species2007.pdf.

NODCCODE: All species on the list have been assigned at least partial National Oceanographic Data Center (NODC) Taxon Codes (Version 8.0). The NODC Taxon Code is a hierarchical system of numerical codes used to represent the scientific names and phylogeny of organisms. The code links the Linnean system of biological nomenclature to a numerical schema that facilitates modern methods of computerized data storage and retrieval. An NODC code contains a maximum of 12 digits partitioned into 2-digit couplets. Each couplet represents one or more levels of the taxonomic hierarchy. For example,

Digit	Represents
1-2	Phylum
3-4	Class and/or Order
5-6	Family
7-8	Genus
9-10	Species
11-12	Subspecies

One drawback of the NODC code is it changes over time to reflect current changes in taxonomic classifications. However, it provides data analysts with a very useful tool for sorting organisms into taxonomic groups.

SYN: Synonymous species are denoted in the table TAB_CBP_MSTR by a flag field named SYN. A code of S means a name is an ITIS recognized synonym and SA indicates the name is the accepted name for the taxa. Synonymous species will have identical NODC Taxon Codes.

TAXON LEVEL: The phylogentic levels for all taxa in the TAB_CBP_MSTR are denoted not only by NODC_CODE but also a TAXON_LEVEL code. Taxon levels are assigned through the Linnean system of biological nomenclature as implemented in ITIS. Currently accepted TAXON_LEVELS and DESCRIPTION designations are as follows:

TAXON_LEVEL DESCRIPTION	TAXON_LEVEL DESCRIPTION
CLS CLASS	SBC SUB-CLASS
DIV DIVISION	SBF SUB-FAMILY
FAM FAMILY	SBO SUB-ORDER
GEN GENUS	SBP SUB-PHYLUM
GRP GROUP	SGEN SUB-GENUS
HYB HYBRED	SPC SUPER-CLASS
IFC INFRA-CLASS	SPE SPECIES
IFO INFRA-ORDER	SPO SUPER-ORDER
NON NON SPECIFIC LEVEL	SSP SUB-SPECIES
ORD ORDER	TRI TRIBE
PHY PHYLUM	VAR VARIETY

TAB_DATA_TYPE

Field Name	Description	Data Type	Length
DATA_TYPE (PK,FK)	SAMPLE TYPE CODE- Denotes type of sample collected	CHAR	2
DATA_TYPE_ DESCRIPTION (NN)	DATA TYPE DESCRIPTION	VARCHAR	50

GENERAL: This table stores information related exclusively to DATA_TYPE codes in the TAB_BIOTA_EVENT TABLE. This table contains information to type of sample collected during an event. The following list of data types represent those which either directly measured in the field or analyzed in the laboratory. Additional codes may be added as needed. Currently accepted DATA_TYPE and DESCRIPTION designations are as follows:

DATA_TYPE	DESCRIPTION
BE	BENTHIC
FL	FLUORESCENCE
MI	MICROZOOPLANKTON
MZ	MESOZOOPLANKTON
PD	PRIMARY PRODUCTION
PH	PHYTOPLANKTON
PP	PICOPLANKTON

TAB_FIPS

Field Name	Description	Data Type	Length
FIPS (PK)	FIPS CODE Federal Information Processing System code	CHAR	5
STATE_INITIALS	STATE INITIAL DESIGNATION Federal Information Processing System code Two-letter state postal abbreviation	CHAR	2
COUNTY_NAME	COUNTY DESIGNATION County name	VARCHAR	30

GENERAL: This table contains (FIPS) Federal Information Processing System codes identifying state and county type of field samples taken at given site. This code is used in the STATIONS tables. Additional codes may be added as needed. Currently accepted FIPS CODES, STATE AND COUNTY designations are as follows:

11001	DC	WASHINGTON	24045	MD	WICOMICO
10001	DE	KENT	24047	MD	WORCESTER
10003	DE	NEW CASTLE	36003	NY	ALLEGANY
10005	DE	SUSSEX	36007	NY	BROOME
24001	MD	ALLEGANY	36015	NY	CHEMUNG
24003	MD	ANNE ARUNDEL	36017	NY	CHENANGO
24005	MD	BALTIMORE	36023	NY	CORTLAND
24510	MD	BALTIMORE CITY	36025	NY	DELAWARE
24009	MD	CALVERT	36043	NY	HERKIMER
24011	MD	CAROLINE	36051	NY	LIVINGSTON
24013	MD	CARROLL	36053	NY	MADISON
24015	MD	CECIL	36065	NY	ONEIDA
24017	MD	CHARLES	36067	NY	ONONDAGA
24019	MD	DORCHESTER	36069	NY	ONTARIO
24021	MD	FREDERICK	36077	NY	OTSEGO
24023	MD	GARRETT	36095	NY	SCHOHARIE
24025	MD	HARFORD	36097	NY	SCHUYLER
24027	MD	HOWARD	36101	NY	STEUBEN
24029	MD	KENT	36107	NY	TIOGA
24031	MD	MONTGOMERY	36109	NY	TOMPKINS
24033	MD	PRINCE GEORGES	36123	NY	YATES
24035	MD	QUEEN ANNES	42001	PA	ADAMS
24039	MD	SOMERSET	42009	PA	BEDFORD
24037	MD	ST MARYS	42011	PA	BERKS
24041	MD	TALBOT	42013	PA	BLAIR
24043	MD	WASHINGTON	42015	PA	BRADFORD

42021	PA	CAMBRIA	51065	VA	FLUVANNA
42023	PA	CAMERON	51069	VA	FREDERICK
42027	PA	CENTRE	51630	VA	FREDERICKSBURG
42029	PA	CHESTER	51071	VA	GILES
42033	PA	CLEARFIELD	51073	VA	GLOUCESTER
42035	PA	CLINTON	51075	VA	GOOCHLAND
42037	PA	COLUMBIA	51079	VA	GREENE
42041	PA	CUMBERLAND	51650	VA	HAMPTON
42043	PA	DAUPHIN	51085	VA	HANOVER
42047	PA	ELK	51087	VA	HENRICO
42055	PA	FRANKLIN	51091	VA	HIGHLAND
42057	PA	FULTON	51093	VA	ISLE OF WIGHT
42061	PA	HUNTINGDON	51095	VA	JAMES CITY
42063	PA	INDIANA	51097	VA	KING AND QUEEN
42067	PA	JUNIATA	51099	VA	KING GEORGE
42069	PA	LACKAWANNA	51101	VA	KING WILLIAM
42071	PA	LANCASTER	51103	VA	LANCASTER
42075	PA	LEBANON	51107	VA	LOUDOUN
42079	PA	LUZERNE	51109	VA	LOUISA
42081	PA	LYCOMING	51680	VA	LYNCHBURG
42083	PA	MCKEAN	51113	VA	MADISON
42087	PA	MIFFLIN	51115	VA	MATHEWS
42093	PA	MONTOUR	51119	VA	MIDDLESEX
42097	PA	NORTHUMBERLAND	51121	VA	MONTGOMERY
42099	PA	PERRY	51125	VA	NELSON
42105	PA	POTTER	51127	VA	NEW KENT
42107	PA	SCHUYLKILL	51700	VA	NEWPORT NEWS
42109	PA	SNYDER	51710	VA	NORFOLK
42111	PA	SOMERSET	51131	VA	NORTHAMPTON
42113	PA	SULLIVAN	51133	VA	NORTHUMBERLAND
42115	PA	SUSQUEHANNA	51135	VA	NOTTOWAY
42117	PA	TIOGA	51137	VA	ORANGE
42119	PA	UNION	51139	VA	PAGE
42127	PA	WAYNE	51730	VA	PETERSBURG
42131	PA	WYOMING	51740	VA	PORTSMOUTH
42133	PA	YORK	51145	VA	POWHATAN
51001	VA	ACCOMACK	51147	VA	PRINCE EDWARD
51003	VA	ALBEMARLE	51149	VA	PRINCE GEORGE
51510	VA	ALEXANDRIA	51153	VA	PRINCE WILLIAM
51005	VA	ALLEGHANY	51157	VA	RAPPAHANNOCK
51007	VA	AMELIA	51159	VA	RICHMOND
51009	VA	AMHERST	51760	VA	RICHMOND CITY
51011	VA	APPOMATTOX	51161	VA	ROANOKE
51013	VA	ARLINGTON	51163	VA	ROCKBRIDGE
51015	VA	AUGUSTA	51165	VA	ROCKINGHAM
51017	VA	BATH	51171	VA	SHENANDOAH
51019	VA	BEDFORD	51177	VA	SPOTSYLVANIA
51023	VA	BOTETOURT	51179	VA	STAFFORD
51029	VA	BUCKINGHAM	51800	VA	SUFFOLK
51031	VA	CAMPBELL	51181	VA	SURRY
51033	VA	CAROLINE	51810	VA	VIRGINIA BEACH
51036	VA	CHARLES CITY	51187	VA	WARREN
51550	VA	CHESAPEAKE CITY	51193	VA	WESTMORELAND
51041	VA	CHESTERFIELD	51830	VA	WILLIAMSBURG
51043	VA	CLARKE	51199	VA	YORK
51570	VA	COLONIAL HEIGHTS	54003	WV	BERKELEY
51045	VA	CRAIG	54023	WV	GRANT
51047	VA	CULPEPER	54027	WV	HAMPSHIRE
51049	VA	CUMBERLAND	54031	WV	HARDY
51053	VA	DINWIDDIE	54037	WV	JEFFERSON
51057	VA	ESSEX	54057	WV	MINERAL
51059	VA	FAIRFAX	54063	WV	MONROE
51610	VA	FALLS CHURCH	54065	WV	MORGAN
51061	VA	FAUQUIER	54071	WV	PENDLETON

TAB_G_METHOD

Field Name	Description	Data Type	Length
G_METHOD (PK,FK)	GEAR METHOD CODE- Code of Sampling Gear used for sample collection	CHAR	2
G_METHOD_DESCRIPTION (NN)	GEAR DESCRIPTION- Chesapeake bay program biological field sampling gear descriptions	VARCHAR	29
G_METHOD_DETAILS	DETAILED DESCRIPTION- Detailed Description of Sampling Gear Including Dimensions	VARCHAR	46

GENERAL: This table stores information relating to the type of gear used to collect samples for all analysis. This table stores identification codes for sampling gear used primary in the TAB_BIOTA_EVENT TABLE. The primary key in this table is defined by G_METHOD. Additional codes may be added as needed. Currently accepted G_METHODS designations are as follows

G_METHOD	G_METHOD_DESCRIPTION	G_METHOD	G_METHOD_DESCRIPTION	G_METHOD	G_METHOD_DESCRIPTION
01	HAND DREDGE	26	SEINE NET	60	ENDICO CURRENT METER
02	DREDGE	27	SEINE NET	61	BRAINCON CURRENT METER
03	ARTIFICIAL SUBSTRAIT	28	SEINE NET	62	SEDIMENT TRAP ARRAY
04	DIATOMER SLIDES	29	SEINE NET	63	SEINE NET
05	CLARKE-BUMPUS SAMPLER	30	TRAWL	64	BONGO NET
06	PLANKTON TRAP	31	OTTER TRAWL	65	PURSE SEINE
07	PLANKTON PUMP	32	OTTER TRAWL	66	FYKE AND HOOP NETS
08	PLANKTON NET	33	TRAWL	67	POTS
09	PLANKTON NET	34	TUCKER TRAWL	68	BOX TRAP
10	PLANKTON NET	36	TRAWL	69	PUSH NET
11	PLANKTON NET	37	OTTER TRAWL	70	GREAT LAKE SHOAL
12	BEAM PLANKTON LINE	38	MID-WATER TRAWL	71	GREAT LAKE SHOAL
13	ANCHOR DREDGE	40	TRAP NET	72	GREAT LAKE SHOAL
14	HYDRAULIC GRAB	41	ELECTROSHOCKER	73	GREAT LAKE SHOAL
15	HAND CORE	42	ECKMAN CAGE	74	BEAM TRAWL
16	POST-HOLE DIGGER	43	CAGE	75	BONGO NET
17	PONAR GRAB	44	CATFISH TRAP	76	BONGO NET
18	PONAR GRAB	45	CRAYFISH TRAP	78	SLAT TRAP
19	PONAR GRAB	46	CRAB TRAP	80	GIL NETS
20	BOX CORE GRAB	47	ANIMAL TRAP	81	USNOL SPADE CORE
21	VAN VEEN GRAB	48	HOOK AND LINE FISHING	82	PONAR GRAB-ODU
22	SHIPEK GRAB	49	DIP NET	83	DOUBLE PONAR GRAB-VA DEQ
23	SEINE HAUL	50	DIVER	85	MID-WATER TRAWL
24	SMITH-MACINTIRE GRAB	54	POUND NET		
25	SEINE NET	55	EPIFAUNA PANELS		

TAB_HUCS8

Field Name	Description	Data Type	Length
HUC8 (PK)	8 DIGIT HUC CODE 8-digit USGS hydrologic unit code	CHAR	8
REGION	2 DIGIT HUC CODE Region associated with the first two digits of HUC8	CHAR	2
SUBREGION	4 DIGIT HUC CODE Sub-region associated with the first four digits of HUC8	CHAR	4
ACCOUNTING_UNIT	6 DIGIT HUC CODE Accounting unit associated with the first six digits of HUC8	CHAR	6
REGION_ DESCRIPTION	REGION DESIGNATION Detailed Description of Region described by first two digits of HUC code	VARCHAR	15
SUBREGION_ DESCRIPTION	SUBREGION DESIGNATION Detailed Description of Region described by first four digits of HUC code	VARCHAR	20
ACCOUNTING_UNIT_ DESCRIPTION	ACCOUNTING DESIGNATION Detailed Description of Region described by first six digits of HUC code	VARCHAR	30
CATALOGING_UNIT_ DESCRIPTION	CATALOGING DESIGNATION Detailed Description of Region described by first eight digits of HUC code	VARCHAR	35

GENERAL: The TAB_HUCS8 TABLE contains 8-digit USGS hydrologic unit codes and descriptions. The HUC8 code is the 8-digit USGS hydrologic unit code in which the station is located. The list that follows contains only the HUC and the associated cataloging unit description. Additional lookup tables related to this table may or may not be included in the final database design. These tables contain specific information related to the REGION, SUBREGION, ACCOUNTING_UNIT, and CATALOGING_UNIT fields (i.e. detailed description, states covered, and area in square miles). The currently accepted 8 digit HUC and CATALOGING_UNIT_DESCRIPTIONS are as follows:

02050101	UPPER SUSQUEHANNA	02060004	SEVERN
02050102	CHENANGO	02060005	CHOPTANK
02050103	OWEGO-WAPPASENING	02060006	PATUXENT
02050104	TIOGA	02060007	BLACKWATER-WICOMICO
02050105	CHEMUNG	02060008	NANTICOKE
02050106	UPPER SUSQUEHANNA-TUNKHANNOCK	02060009	POCOMOKE
02050107	UPPER SUSQUEHANNA-LACKAWANNA	02060010	CHINCOTEAGUE
02050201	UPPER WEST BRANCH SUSQUEHANNA	02070001	SOUTH BRANCH- POTOMAC
02050202	SINNEMAHOING	02070002	NORTH BRANCH- POTOMAC
02050203	MIDDLE WEST BRANCH SUSQUEHANNA	02070003	CACAPON-TOWN
02050204	BALD EAGLE	02070004	CONOCOCHIEGUE-OPEQUON
02050205	PINE	02070005	SOUTH FORK SHENANDOAH
02050206	LOWER WEST BRANCH SUSQUEHANNA	02070006	NORTH FORK SHENANDOAH
02050301	LOWER SUSQUEHANNA-PENNS	02070007	SHENANDOAH
02050302	UPPER JUNIATA	02070008	MIDDLE POTOMAC-CATOCTIN
02050303	RAYSTOWN	02070009	MONOCACY
02050304	LOWER JUNIATA	02070010	MIDDLE POTOMAC-ANACOSTIA- OCCOQUAN
02050305	LOWER SUSQUEHANNA-SWATARA	02070011	LOWER POTOMAC
02050306	LOWER SUSQUEHANNA	02080101	LOWER CHESAPEAKE BAY
02060001	UPPER CHESAPEAKE BAY	02080102	GREAT WICOMICO-PIANKATANK
02060002	CHESTER-SASSAFRAS	02080103	RAPIDAN-UPPER RAPPAHANNOCK
02060003	GUNPOWDER-PATAPSCO	02080104	LOWER RAPPAHANNOCK

02080105 MATTAPONI
 02080106 PAMUNKEY
 02080107 YORK
 02080108 LYNNHAVEN-POQUOSON
 02080109 WESTERN LOWER DELMARVA
 02080110 EASTERN LOWER DELMARVA
 02080201 UPPER JAMES

02080202 MAURY
 02080203 MIDDLE JAMES-BUFFALO
 02080204 RIVANNA
 02080205 MIDDLE JAMES-WILLIS
 02080206 LOWER JAMES
 02080207 APPOMATTOX
 02080208 HAMPTON ROADS

TAB_IBI_PARAMETER

Field Name	Description	Data Type	Length
IBI_PARAMETER (PK,FK)	IBI PARAMETER CODE	VARCHAR	25
IBI_PARAMETER_DESCRIPTION (NN)	IBI PARAMETER DESCRIPTION	VARCHAR	75

General: This table stores information related exclusively to the IBI_PARAMETER codes in codes in the IBI_METRICS_TABLE. This table contains information to parameter names. Currently accepted PARAMETER and DESCRIPTION designations are as follows:

IBI_PARAMETER	IBI_PARAMETER_DESCRIPTION
BIOMASS_CHL_RATIO	TOTAL PHYTOPLANKTON BIOMASS TO AP CHL RATIO
CHLA_SURF	SURFACE CHLOROPHYLL A (0.5 M) UG/L
CRYPTO_BIO_PCT	PERCENT CRYPTOPHYTE BIOMASS
CYANO_BIOMASS	TOTAL CYANOPHYTE BIOMASS IN UG CARBON/LITER
DIATOM_BIOMASS	TOTAL DIATOM BIOMASS IN UG CARBON/LITER
DINO_BIOMASS	TOTAL DINOFLAGGELATE BIOMASS IN UG CARBON/LITER
DOC	AVE LAYER DISSOLVED ORGANIC CARBON CONC IN MG/L
MICROCYSTIS_AER_ABUND	TOTAL MICROCYSTIS BIOMASS IN UG CARBON/LITER
PHEO	AVE LAYER PHEOOHYTIN CONC IN MG/L
PICO_ABUND	TOTAL PICOPLANKTON ABUNDANCE IN NUMBER/LITER
PROROCENTRUM_MIN_ABUND	PROROCENTRUM_MINIMUM ABUNDANCE IN NUMBER/LITER
TOT_BIOMASS	TOTAL PHYTOPLANKTON BIOMASS IN UG CARBON/LITER
TOTAL_SCORE	AVERAGE PIBI SCORE FOR SAMPLING EVENT

TAB_IBI_SALZONE

Field Name	Description	Data Type	Length
IBI_SALZONE (PK,FK)	IBI SALINITY ZONE CODE	char	1
IBI_SALZONE_DESCRIPTION (NN)	DESCRIPTION	varchar	25
SALZONE_RANGES	SALINITY RANGE-in PSU	varchar	15

GENERAL: This table stores information related exclusively to IBI SALZONE codes in the TAB_IBI_METRICS and TAB_PHYTO_INDICATOR_METRIC tables . In many cases the Water Quality and Living Resource monitoring programs performed field sample collection at the same time. Therefore salinity

zones were determined based on the water quality data. However, in cases where water quality measurements and Living Resources data were not collected synchronous, the SALZONE is based on the water quality profile collected within a 3 day window of the Living Resources sampling event. Only when water quality data was unavailable were SALZONES reported as missing. Salinity classes are as follows:

IBI_	IBI_SALZONE	SALZONE
SALZONE_	DESCRIPTION	RANGES
F	TIDAL FRESH	<0.5 PSU
M	MESOHALINE	=>5.0 TO 18 PSU
O	OLIGOHALINE	=>0.5 TO 5.0 PSU
P	POLYHALINE	=>18 PSU

TAB_LAYER

Field Name	Description	Data Type	Length
LAYER (PK,FK)	LAYER Layer of Water Column in which Sample was Taken	CHAR	3
LAYER_ DESCRIPTION (NN)	LAYER DESCRIPTION	VARCHAR	30

GENERAL: This table stores information relating to the LAYER in the water column in which all samples are taken. This table stores identification codes for LAYER used primary in the TAB_BIOTA_EVENT TABLE. The primary key in this table is defined the LAYER. Additional codes may be added as needed. Currently accepted LAYER designations are as follows

LAYER	DESCRIPTION	M1	MIDDLE 1/3 TOT DEPTH
AE	ABOVE EUPHOTIC ZONE	M2	MIDDLE 2/3 TOT DEPTH
AP	ABOVE PYCNOCLINE	MI	MICROLAYER
AT	ABOVE THERMOCLINE	S	SURFACE
B	BOTTOM	SE	SEDIMENT
BE	BELOW EUPHOTIC ZONE	SW	SEDIMENT/WATER INTER
BP	BELOW PYCNOCLINE	WC	WHOLE WATER COLUMN
BT	BELOW THERMOCLINE	WCA	WHOLE WATER COLUMN TOW A
M	MIDDLE	WCB	WHOLE WATER COLUMN TOW B

TAB_LIFE_STAGE

Field Name	Description	Data Type	Length
LIFE_STAGE (PK,FK)	LIFE STAGE CODE Chesapeake Bay Program Life Stage Code	CHAR	3
LIFE_STATE_ DESCRIPTION (NN)	DESCRIPTION Detailed Life Stage code Description	VARCHAR	50

General: This table stores information in relating to the identification of species life stages in the TAB_ZOO_TAX TABLE. The currently accepted LIFE_STAGE values and DESCRIPTIONS are as follows:

LIFE_STAGE	LIFE_STAGE_DESCRIPTION	LIFE_STAGE	LIFE_STAGE_DESCRIPTION
00	EGG	03	POST FIN FOLD
01	YOLK SAC	04	YEAR CLASS 0
02	FIN FOLD	05	YEAR CLASS 1 OR OLDER

LIFE_STAGE	LIFE_STAGE_DESCRIPTION	LIFE_STAGE	LIFE_STAGE_DESCRIPTION
06	JUVENILES AND ADULTS	53	SPECIES B
07	LARVAE AND JUVENILES AND ADULTS	54	SPECIES C
08	LARVAE AND JUVENILES	55	SPECIES D
09	NAUPLII AND PERITRICHS	56	SPECIES E
10	NAUPLII OR COPEPODITE	57	SPECIES F
11	NAUPLII	58	SPECIES A-FULL
12	COPEPODITE	59	SPECIES A-EMPTY
13	ORTHONAUPLII STAGE 1-3	60	SPECIES B-FULL
14	METANAUPLII STAGE 4-6	61	SPECIES B-EMPTY
15	COPEPODITE STAGE 1-3	62	SPECIES C-FULL
16	COPEPODITE STAGE 4-6	63	SPECIES C-EMPTY
17	CYPRIS LARVAE	64	EMBRYO
18	RESERVED FOR FUTURE USE	65	NEONITES
19	COPEPOD EGG	66	MALE, AGE CLASS 2
20	NYMPH	67	FEMALE, IMMATURE AGE CLASS 0
21	PUPAE	68	FEMALE, IMMATURE AGE CLASS 1
22	PHARATE	69	FEMALE, MATURE AGE CLASS 1
23	INSTAR	70	FEMALE, MATURE AGE CLASS 2
24	NAIAD	71	FEMALE, MATURE AGE CLASS 0
25	HATCHERTY MARKED ORGANISM	72	FEMALE, IMMATURE AGE CLASS 2
26	YEAR CLASS 2 OR OLDER	73	SALPS
27	AGE 0 MDDNR HATCHERTY MARKED ORGANISM	74	RESERVED FOR FUTURE USE
28	AGE 1 MDDNR HATCHERTY MARKED ORGANISM	75	RESERVED FOR FUTURE USE
29	AGE 2 OR GREATER MDDNR HATCHERTY MARKED ORGANISM	76	RESERVED FOR FUTURE USE
30	PREZOEAE	77	RESERVED FOR FUTURE USE
31	ZOEAE	78	RESERVED FOR FUTURE USE
32	METAZOEAE	79	RESERVED FOR FUTURE USE
33	MEGALOPS	80	MOLTED
34	MALE, UNSPECIFIED AGE	81	UNMOLTED
35	FEMALE, ADULT	82	LARGE
36	FEMALE, JUVENILE	83	LARGE-FULL
37	MDDNR HATCHERTY MARKED ORGANISM	84	LARGE-EMPTY
38	MALE, AGE CLASS 0	85	FULL
39	MALE, AGE CLASS 1	86	EMPTY
40	NAUPLII STAGE 1	87	MEDIUM
41	NAUPLII STAGE 2	88	SMALL
42	NAUPLII STAGE 3	89	NOT SPECIFIED
43	NAUPLII STAGE 4	90	EGG- NOT VIABLE
44	NAUPLII STAGE 5	91	SUBADULT
45	NAUPLII STAGE 6	92	POST LARVAL
46	COPEPODITE STAGE 1	93	JUVENILE
47	COPEPODITE STAGE 2	94	TAXON WITH COUNT STORED AS VOLUME IN MILLILITERS
48	COPEPODITE STAGE 3	95	MATURE
49	COPEPODITE STAGE 4	96	IMMATURE
50	COPEPODITE STAGE 5	97	LARVAE
51	COPEPODITE STAGE 6	98	ADULT
52	SPECIES A	99	NOT APPLICABLE

TAB_LL_DATUMS

Field	Description	Type	Length
LL_DATUM (PK)	GEOGRAPHIC DATUM CODE Latitude/longitude datum code	CHAR	5
LL_DATUM_ DESCRIPTION (NN)	Description/definition of GEOGRAPHIC DATUM	VARCHAR	50

GENERAL- The LL_DATUM TABLE contains latitude/longitude datum and descriptions The LL_DATUM code defines the datum under which the latitude and longitude measurements for a particular station were calculated.). The currently accepted LL_DATUM and DESCRIPTIONS are as follows:

LL_DATUM	LL_DATUM_DESCRIPTION
NAD27	1927 NORTH AMERICAN DATUM
NAD83	1983 NORTH AMERICAN DATUM
WGS84	WORLD GEODETIC SYSTEM 1984
UNID	UNKNOWN DATUM

TAB_METHODS

Field Name	Description	Data Type	Length
METHOD (PK,FK)	ANALYTICAL METHOD CODE - Method Description code	CHAR	8
TITLE	DATA GENERATOR METHOD IDENTIFICATION	VARCHAR	50
DESCRIPTION (NN)	METHOD DESCRIPTION	VARCHAR	400
DETAILS	DETAILED METHOD DESCRIPTION	TEXT	-

General: This table stores information related exclusively to METHOD codes in the PHYTO_PICO TABLE, ZOO_TAX TABLE, BIOMASS_SETVOL TABLE and the PRIMARY_PROD TABLE. This table contains descriptions of the field and laboratory methods for parameter determination. The METHOD code is used to define the field or lab procedure used to obtain the parameter value. Currently accepted METHODS designations are as follows (PLEASE SEE DATABASE FOR DETAILS):

METHOD	METHOD	METHOD
BM101	MI101A	PD101
BM101B	MI102	PD102
BM102	MZ101A	PH101
BV101	MZ101B	PH102
JF101	MZ101C	PH102M
JF102	MZ102	PH103
JF103	MZ102B	PP101
MI101	MZ103	PP102

TAB_PARAMETERS

Field Name	Description	Data Type	Length
REPORTING_PARAMETER (PK,FK)	Reporting Parameter Code	Text	8
REPORTING_PARAMETER_DESCRIPTION (NN)	Reporting Parameter Description-Parameter description/definition	Text	60

General: This table stores information related exclusively to PARAMETER codes in codes in the TAB_PHYTO_PICO, TAB_ZOO_TAX, TAB_BIOMASS_SETVOL and TAB_PRIMARY_PROD tables. This table contains information to parameter names and standard detection limits. The following list of parameters represent those parameters that are either directly measured in the field or analyzed in the laboratory. Additional codes may be added as needed. Currently accepted PARAMETER and DESCRIPTION designations are as follows:

PARAMETER	DESCRIPTION
ASH_FRWT	ASH FREE DRY WEIGHT (MG/M**3)
ASH_WT	TOTAL ASH WEIGHT (MG/M**3)
ASHFREWT	ASH FREE DRY WEIGHT (G/SAMPLE)
ASHWT	TOTAL ASH WEIGHT (G/SAMPLE)
BIOVOLUME	BIOVOLUME(ML/SAMPLE)
COUNT	NUMBER PER UNIT MEASURE
DRY_WT	TOTAL DRY WEIGHT (MG/M**3)
DRYWT	TOTAL DRY WEIGHT (G/SAMPLE)
SET_VOL	SETTLED VOLUME ZOOPLANKTON AND DETRITUS (ML/M**3)
SET_VOLZ	SETTLED VOLUME OF ZOOPLANKTON (ML/M**3)
SETVOL	SETTLED VOLUME ZOOPLANKTON AND DETRITUS (ML/SAMPLE)
SETVOLZ	SETTLED VOLUME OF ZOOPLANKTON (ML/SAMPLE)

TAB_QUALIFIERS

Name	Description	Data Type	Length
QUALIFIERS (PK,FK)	QUALIFIER CODE Parameter value qualifier code	CHAR	2
QUALIFIERS_DESCRIPTION (NN)	DESCRIPTION definition of QUALIFIER	VARCHAR	110

General: This table stores information related exclusively to REPORTING_PARAMETER codes in the TAB_PRIMARY_PROD table. The QUALIFIER code is used to describe the parameter value as less than or greater than the method detection limit or as a calculated value which has been calculated using a method detection limit. Currently accepted QUALIFIERS and DESCRIPTION designations are as follows:

QUALIFIERS	DESCRIPTION
<0	LESS THAN THE LOWER METHOD DETECTION LIMIT (MDL)
>0	GREATER THAN THE UPPER METHOD DETECTION LIMIT (MDL)
#	TRACE (LESS THAN AN UNKNOWN DETECTABLE VALUE)
J	ESTIMATED VALUE
N	NOT DETECTED
NA	NOT RECORDED/NOT APPLICABLE/PARAMETER VALUE ACCEPTABLE

TAB_SALZONES

Field Name	Description	Data Type	Length
------------	-------------	-----------	--------

Field Name	Description	Data Type	Length
SALZONE (PK,FK)	SALINITY ZONE CODE	CHAR	2
SALZONE_ DESCRIPTION (NN)	CODE DEFINITION	VARCHAR	50
SALZONE_RANGE	SALINITY RANGE FOR ZONE In Parts Per Thousand	VARCHAR	15

GENERAL: This table stores information related exclusively to SALZONE codes in the TAB_BIOTA_E VENT TABLE. In many cases the Water Quality and Living Resource monitoring programs performed field sample collection at the same time. Therefore salinity zones were determined based on the water quality data. However, in cases where water quality measurements and Living Resources data were not collected synchronous, the SALZONE is based on the water quality profile collected with in a one week window of the Living Resources sampling event. Salinity zones determined in this manner are noted as estimated. Only when water quality data was unavailable were SALZONES reported as missing. Salinity classes are as follows:

SALZONE	DESCRIPTION
F	FRESH (0-0.5 PPT)
FE	ESTIMATED FRESH (0-0.5 PPT)
M	MESOHALINE (5.1- 18.0 PPT)
ME	ESTIMATED MESOHALINE (5.1- 18.0 PPT)
N	NOT RECORDED
O	OLIGOHALINE (0.51-5.0 PPT)
OE	ESTIMATED OLIGOHALINE (0.51-5.0 PPT)
P	POLYHALINE (>18.0 PPT)
PE	ESTIMATED POLYHALINE (>18.0 PPT)

TAB_SAMPLE_TYPES

Name	Description	Data Type	Length
SAMPLE_TYPE (PK)	SAMPLE COLLECTION TYPE CODE	VARCHAR	5
DESCRIPTION (NN)	CODE DEFINITION	VARCHAR	130

GENERAL: This table stores information relating to the type of field samples taken at given site. These codes are used in the TAB_BIOTA_EVENT table. Additional codes may be added as needed. Currently accepted SAMPLE_TYPE designations are as follows:

C	= Composite Sample (May be composite of multiple samples from a site or multiple depths)
D	= Discrete (GRAB) Sample (Single sample from site or depth)
ISM_H	= In-Situ Measurement, Collected as part of a Horizontal Transect
ISM_V	= In-Situ Measurement, Collected as part of a Vertical Profile

TAB_SEGS_1985

Field Name	Description	Data Type	Length
CBSEG_1985 (PK,FK)	CHESAPEAKE BAY PROGRAM SEGMENT-1985 1985 monitoring segment	CHAR	4
CBSEG_1985_ DESCRIPTION (NN)	DESCRIPTION Description/definition of SEG_1985	VARCHAR	125

GENERAL- The table TAB_CBSEGS_1985 provides the monitoring segment codes describing in which segment a station is located. It is based upon the Chesapeake Bay Programs original 1985 segmentation scheme. These codes are used in the TAB_STATIONS table. The currently accepted CB_SEG85 values and DESCRIPTIONS are as follows:

CB-SEG85	DESCRIPTION	ET9	BIG ANNEMESSEX RIVER
AFL	NON-TIDAL AREAS OF THE CHESAPEAKE BAY WATERSHED	ET10	POCOMOKE RIVER
CB1	SUSQUEHANNA FLATS	LE1	PATUXENT RIVER, LOWER ESTUARINE SEGMENT
CB2	UPPER PORTION OF THE CHESAPEAKE BAY MAINSTEM	LE2	POTOMAC RIVER, LOWER ESTUARINE SEGMENT
CB3	UPPER-MOST ESTUARINE ZONE IN THE CHESAPEAKE BAY MAINSTEM	LE3	RAPPAHANNOCK RIVER, LOWER ESTUARINE SEGMENT
CB4	UPPER PORTION OF THE CENTRAL CHESAPEAKE BAY MAINSTEM	LE4	YORK RIVER, LOWER ESTUARINE SEGMENT
CB5	CENTRAL PORTION OF THE CHESAPEAKE BAY MAINSTEM	LE5	JAMES RIVER, LOWER ESTUARINE SEGMENT
CB6	LOWER WEST-CENTRAL PORTION OF THE CHESAPEAKE BAY MAINSTEM	RET1	PATUXENT RIVER, RIVERINE-ESTUARINE TRANSITION ZONE
CB7	LOWER EAST-CENTRAL PORTION OF THE CHESAPEAKE BAY MAINSTEM	RET2	POTOMAC RIVER, RIVERINE-ESTUARINE TRANSITION ZONE
CB8	SOUTHERN-MOST PORTION OF THE CHESAPEAKE BAY MAINSTEM	RET3	RAPPAHANNOCK RIVER, RIVERINE-ESTUARINE TRANSITION ZONE
EE1	EASTERN BAY, MILES RIVER, AND WYE RIVER	RET4	YORK RIVER, RIVERINE-ESTUARINE TRANSITION ZONE
EE2	CHOPTANK RIVER WEST OF CASTLE HAVEN, INCLUDING THE TRED AVON RIVER, BROAD CREEK, HARRIS CREEK, AND THE LITTLE CHOPTANK RIVER	RET5	JAMES RIVER, RIVERINE-ESTUARINE TRANSITION ZONE
EE3	TANGIER AND POCOMOKE SOUNDS	TF1	PATUXENT RIVER, TIDAL FRESHWATER SEGMENT
ET1	NORTHEAST RIVER	TF2	POTOMAC RIVER, TIDAL FRESHWATER SEGMENT
ET2	ELK AND BOHEMIA RIVERS	TF3	RAPPAHANNOCK RIVER, TIDAL FRESHWATER SEGMENT
ET3	SASSAFRAS RIVER	TF4	YORK RIVER, TIDAL FRESHWATER SEGMENT
ET4	CHESTER RIVER	TF5	JAMES RIVER, TIDAL FRESHWATER SEGMENT
ET5	CHOPTANK RIVER, EXCLUDING EE2	WE4	MOBJACK BAY
ET6	NANTICOKE RIVER	WT1	BUSH RIVER
ET7	WICOMICO RIVER	WT2	GUNPOWDER RIVER
ET8	MANOKIN RIVER	WT3	MIDDLE RIVER AND SENECA CREEK
		WT4	BACK RIVER
		WT5	PATAPSCO RIVER
		WT6	MAGOTHY RIVER
		WT7	SEVERN RIVER
		WT8	SOUTH, RHODE, AND WEST RIVERS

TAB_CBSEGS_2003

Field	Description	Type	Length
CBSEGS_2003 (PK, FK)	2003 CHESAPEAKE BAY PROGRAM MONITORING SEGMENT CODE	CHAR	6

Field	Description	Type	Length
CBSEGS_2003_DESCRIPTION (NN)	2003 MONITORING SEGMENT DESCRIPTION	VARCHAR	50

General- The CBSEGS_2003 TABLE provides the monitoring segment codes describing in which segment a station is located. It is based upon the new segmentation scheme developed in 1997, revised in 2000 and 2003. These codes are used in the TAB_STATIONS table. The currently accepted CBSEGS_2003 values and DESCRIPTIONS are as follows:

ANATF	ANACOSTIA RIVER-TIDAL FRESH REGION	MATTF	MATTAWOMAN CREEK-TIDAL FRESH REGION
APPTF	APPOMATTOX RIVER-TIDAL FRESH REGION	MIDOH	MIDDLE RIVER-OLIGOHALINE REGION
BACOH	BACK RIVER-OLIGOHALINE REGION	MOBPH	MOBJACK BAY-POLYHALINE REGION
BIGMH	BIG ANNEMESSEX RIVER-MESOHALINE REGION	MPNOH	MATTAPONI RIVER-OLIGOHALINE REGION
BOHOH	BOHEMIA RIVER-OLIGOHALINE REGION	MPNTF	MATTAPONI RIVER-TIDAL FRESH REGION
BSHOH	BUSH RIVER-OLIGOHALINE REGION	NANMH	NANTICOKE RIVER-MESOHALINE REGION
C&DOH	C&D CANAL-OLIGOHALINE REGION	NANOH	NANTICOKE RIVER-OLIGOHALINE REGION
CB1TF	CHESAPEAKE BAY-TIDAL FRESH REGION	NANTF	NANTICOKE RIVER-TIDAL FRESH REGION
CB2OH	CHESAPEAKE BAY-OLIGOHALINE REGION	NORTF	NORTHEAST RIVER-TIDAL FRESH REGION
CB3MH	CHESAPEAKE BAY-MESOHALINE REGION	PATMH	PATAPSCO RIVER-MESOHALINE REGION
CB4MH	CHESAPEAKE BAY-MESOHALINE REGION	PATTF	PATAPSCO RIVER-TIDAL FRESH REGION
CB5MH	CHESAPEAKE BAY-MESOHALINE REGION	PAXMH	PATUXENT RIVER-MESOHALINE REGION
CB6PH	CHESAPEAKE BAY-POLYHALINE REGION	PAXOH	PATUXENT RIVER-OLIGOHALINE REGION
CB7PH	CHESAPEAKE BAY-POLYHALINE REGION	PAXTF	PATUXENT RIVER-TIDAL FRESH REGION
CB8PH	CHESAPEAKE BAY-POLYHALINE REGION	PIAMH	PIANKATANK RIVER-MESOHALINE REGION
CHKOH	CHICKAHOMINY RIVER-OLIGOHALINE REGION	PISTF	PISCATAWAY CREEK-TIDAL FRESH REGION
CHOMH1	CHOPTANK RIVER-MESOHALINE REGION 1	PMKOH	PAMUNKEY RIVER-OLIGOHALINE REGION
CHOMH2	CHOPTANK RIVER-MESOHALINE REGION 2	PMKTF	PAMUNKEY RIVER-TIDAL FRESH REGION
CHOOH	CHOPTANK RIVER-OLIGOHALINE REGION	POCMH	POCOMOKE RIVER-MESOHALINE REGION
CHOTF	CHOPTANK RIVER-TIDAL FRESH REGION	POCOH	POCOMOKE RIVER-OLIGOHALINE REGION
CHSMH	CHESTER RIVER-MESOHALINE REGION	POCTF	POCOMOKE RIVER-TIDAL FRESH REGION
CHSOH	CHESTER RIVER-OLIGOHALINE REGION	POTMH	POTOMAC RIVER-MESOHALINE REGION
CHSTF	CHESTER RIVER-TIDAL FRESH REGION	POTOH	POTOMAC RIVER-OLIGOHALINE REGION
CRRMH	CORROTOMAN RIVER-MESOHALINE REGION	POTTF	POTOMAC RIVER-TIDAL FRESH REGION
EASMH	EASTERN BAY-MESOHALINE REGION	RHDMH	RHODE RIVER-MESOHALINE REGION
EBEMH	EAST BRANCH ELIZABETH RIVER-MESOHALINE REGION	RPPMH	RAPPAHANNOCK RIVER-MESOHALINE REGION
ELIMH	ELIZABETH RIVER-MESOHALINE REGION	RPPOH	RAPPAHANNOCK RIVER-OLIGOHALINE REGION
ELIPH	ELIZABETH RIVER-POLYHALINE REGION	RPPTF	RAPPAHANNOCK RIVER-TIDAL FRESH REGION
ELKOH	ELK RIVER-OLIGOHALINE REGION	SASOH	SASSAFRAS RIVER-OLIGOHALINE REGION
FSBMH	FISHING BAY-MESOHALINE REGION	SBEMH	SOUTH BRANCH ELIZABETH RIVER-MESOHALINE REGION
GUNOH	GUNPOWDER RIVER-OLIGOHALINE REGION	SEVMH	SEVERN RIVER-MESOHALINE REGION
GUNTF	GUNPOWDER RIVER-TIDAL FRESH REGION	SOUMH	SOUTH RIVER-MESOHALINE REGION
HNGMH	HONGA RIVER-MESOHALINE REGION	SUSTF	SUSQUEHANNA RIVER-TIDAL FRESH REGION
JMSMH	JAMES RIVER-MESOHALINE REGION	TANMH	TANGIER SOUND-MESOHALINE REGION
JMSOH	JAMES RIVER-OLIGOHALINE REGION	WBEMH	WEST BRANCH ELIZABETH RIVER-MESOHALINE REGION
JMSPH	JAMES RIVER-POLYHALINE REGION	WBRTF	WESTERN BRANCH-TIDAL FRESH REGION
JMSTF	JAMES RIVER-TIDAL FRESH REGION	WICMH	WICOMICO RIVER-MESOHALINE REGION
LAFMH	LAFAYETTE RIVER-MESOHALINE REGION	WSTMH	WEST RIVER-MESOHALINE REGION
LCHMH	LITTLE CHOPTANK RIVER-MESOHALINE REGION	YRKMH	YORK RIVER-MESOHALINE REGION
LYNPH	LYNNHAVEN RIVER-POLYHALINE REGION	YRKPH	YORK RIVER-POLYHALINE REGION
MAGMH	MAGOTHY RIVER-MESOHALINE REGION		
MANMH	MANOKIN RIVER-MESOHALINE REGION		

TAB_SOURCES

Name	Description	Data Type	Length
SOURCE (PK)	DATA SOURCE CODE	VARCHAR	10
SOURCE_ DESCRIPTION (NN)	DATA SOURCE DESCRIPTION Definition of SOURCE	VARCHAR	100
SOURCE_ DETAILS	MONITORING DATA SOURCE DESCRIPTION Details	VARCHAR	150

GENERAL: These codes, taken directly from the currently in the water quality, and living resources databases. As data from other sources (e.g. DCRA, PADEP, SRBC) is added, their SOURCE codes must first be added to this table. Currently accepted SOURCE designations are as follows:

SOURCE	SOURCE_DESCRIPTION	SOURCE_DETAILS
MDE	MARYLAND DEPARTMENT OF THE ENVIRONMENT	
MSU	MORGAN STATE UNIVERSITY	FORMERLY (ANS) ACADEMY OF NATURAL SCIENCES, BENEDICT ESTUARINE LABORATORY
ODU	OLD DOMINION UNIVERSITY	CONTRACTED BY THE STATE OF VIRGINIA
OEP	MARYLAND OFFICE OF ENVIRONMENTAL PROGRAMS	
VERSAR	VERSAR INC.	
VIMS	VIRGINIA INSTITUTE OF MARINE SCIENCE	CONTRACTED BY THE STATE OF VIRGINIA
VSWCB	VIRGINIA STATE WATER CONTROL BOARD	

TAB_STATIONS

Field Name	Description	Data Type	Length
STATION (PK, FK)	SAMPLING STATION- CBP station name	VARCHAR	15
LATITUDE (PK)	STATION LATITUDE- Station Latitude in decimal degrees	DECIMAL	
LONGITUDE (PK)	STATION LONGITUDE- Station Longitude in negative decimal degrees coordinates)	DECIMAL	
LL_DATUM (FK)	LAT_LONG DATUM CODE Code specifying the associated datum of the latitude and longitude values	CHAR	5
STATION_ DESCRIPTION	SAMPLING STATION DESCRIPTION- Physical or Geographical description of Station	VARCHAR	255
WATER_BODY	WATER BODY DESCRIPTION Water body (i.e. river, bay, creek, run) in which the station is located	VARCHAR	50
CBP_BASIN	CHESAPEAKE BAY PROGRAM BASIN Chesapeake Bay Program basin in which the station	VARCHAR	30

Field Name	Description	Data Type	Length
(FK,NN)	is located		
TS_BASIN (NN)	BASIN OR TRIBUTARY CODE Largest drainage basin (aside from Chesapeake Bay) with which the station is associated	VARCHAR	30
BASIN	BASIN- largest body of water with which the monitoring station is associated aside from chesapeake bay	VARCHAR	30
SUBBASIN	SUBBASIN (TRIBUTARY RIVER) Second largest drainage basin with which the station is associated (some stations will not have this attribute)	VARCHAR	30
CBSEG_1985 (FK,NN)	1985 BAY SEGMENT Code specifying the 1985 Chesapeake Bay watershed segment in which the station is located	CHAR	4
CBSEG_2003 (FK,NN)	2003 BAY SEGMENT Code specifying the 2003 Chesapeake Bay watershed segment in which the station is located	CHAR	6
HUC8 (FK,NN)	8 DIGIT USGS HYDROLOGIC UNIT CODE 8-digit USGS hydrologic unit code	CHAR	8
FIPS (FK,NN)	FEDERAL INFORMATION PROCESSING SYSTEM CODE - identifying the state and county in which the station is located	CHAR	5
FALL_LINE	Code specifying whether the station is located above or below the geologic fall line or the zone of tidal influence (A =above, B =below)	CHAR	1
UTM_X (NN)	UTM_X- X position for station Universal Transverse Mercator ZONE 18 coordinates.	INT	
UTM_Y (NN)	UTM_Y- Y position for station position in Universal Transverse Mercator ZONE 18 coordinates.	INT	
STATION_DETAILS	COMMENTS- ANY COMMENTS RELATED TO THE MONITORING STATION	VARCHAR	300

NOTES:

GENERAL: The TAB_STATIONS table contains CBP water quality station names and associated attributes. Its primary use will be to establish common geographic referencing across data types. Because the Chesapeake Bay Program has historically used several “basin” designations (e.g. CBP_BASIN, TS_BASIN) to provide summary information to program participants and the public, these naming conventions must be preserved in order to maintain historical perspectives of the data. The newly proposed “basin” designations (e.g. WATER_BODY, BASIN, SUBBASIN, SUBBASIN2) are meant to provide the user with a more detailed geographic representation of point data to the sub-watershed or local level. By doing so, users will be able to retrieve information for water quality stations located within small creeks possibly in their neighborhoods. They will no longer be restricted to large basins. Stations currently used for biological monitoring are as follows:

STATION	STATION_DESCRIPTION
CB1.1	MOUTH OF SUSQUEHANNA RIVER; HEAD OF BAY; MID-CHANNEL
CB2.1	SOUTHWEST OF TURKEY POINT; UPPER LIMIT OF TRANSITION ZONE; MID-CHANNEL
CB2.2	WEST OF STILL POND NEAR BUOY R-34; MIDDLE OF TRANSITION ZONE; MID-CHANNEL
CB3.3C	NORTH OF BAY BRIDGE; CHARACTERIZES MID-CHANNEL
CB4.3C	EAST OF DARES BEACH NEAR BUOY R-64; CHARACTERIZES MID-CHANNEL
CB6.1	LOWER WEST CENTRAL CHESAPEAKE BAY (MAIN CHANNEL OFF LOWER END OF THE RAPPAHANNOCK RIVER)
CB5.2	EAST OF POINT NO POINT; MID-CHANNEL
ET3.1	SASSAFRAS RIVER NEAR ROUTE 213 BRIDGE; TIDAL FRESH WATER STATION
ET4.2	LOWER CHESTER RIVER, SOUTH OF EASTERN NECK ISLAND AT BUOY FIG-9; CHARACTERIZES LOWER ESTUARINE
CB6.4	CENTRAL CHESAPEAKE BAY OFFSHORE FROM MOUTH OF YORK RIVER
CB7.3E	LOWER EASTERN SHORE CHANNEL AREA
CB7.4	BALTIMORE CHANNEL AT THE BAY BRIDGE/TUNNEL
EE3.1	NORTH TANGIER SOUND, NORTHWEST OF HAINES POINT, 100 YARDS NORTH OF BUOY R-16; CHARACTERIZES EMBAYMENT
ET5.1	UPPER CHOPTANK RIVER AT GANEY WHARF, DOWNSTREAM OF CONFLUENCE; TUCKAHOE CIRCLE; TIDAL FRESH WATER STATION
ET5.0A	CHOPTANK RIVER, MID-CHANNEL OF MOUTH OF KINGS CREEK
LE5.5	MOUTH OF THE JAMES RIVER
ET5.2	LOWER CHOPTANK RIVER NEAR ROUTE 50 BRIDGE AT CAMBRIDGE; CHARACTERIZES LOWER ESTUARINE
LE1.1	MID-CHANNEL; SSW OF JACK BAY SANDSPIT AND NORTHEAST OF SANDGATES; CHARACTERIZES LOWER ESTUARINE
LE2.2	POTOMAC RIVER OFF RAGGED POINT AT BUOY 51B; LOWER ESTUARINE ZONE
LE3.6	MOUTH OF THE RAPPAHANNOCK RIVER
LE5.5-W	MOUTH OF THE JAMES RIVER, WEST OF LE5.5, STARTED IN 9/1/1996
RET2.2	BOUY 19 MID-CHANNEL OFF MARYLAND POINT; CHARACTERIZES TRANSITION ZONE
RET3.1	RAPPAHANNOCK RIVER NORTH OF BUOY R10, VIMS SLACK
RET4.1	PAMUNKEY RIVER AT SOUTHERN END OF LEE MARSH
RET4.3	YORK RIVER (VIMS SLACK WATER #C57)
RET5.2	SWANN'S POINT, JAMES RIVER WQMP STA#19
SBE2	SOUTHERN BRANCH ELIZABETH RIVER - ADJACENT TO ATLANTIC WOOD
SBE5	SOUTHERN BRANCH ELIZABETH RIVER - ADJACENT TO VIRGINIA POWER
TF5.5	JAMES RIVER AT RED BUOY #107 (JRWQMP STATION #13)
TF1.5	MID-CHANNEL AT NOTTINGHAM; CHARACTERIZES TIDAL FRESH ZONE
TF1.6	MID-CHANNEL OFF WHARF AT LOWER MARLBORO; CHARACTERIZES TRANSITION ZONE
TF1.7	MID-CHANNEL ON A TRANSSECT OF APPROXIMATE 115 DEGREE FROM JACK'S CREEK; CHARACTERIZES TRANSITION ZONE
TF2.3	BOUY N 54 MID-CHANNEL OFF INDIANHEAD; CHARACTERIZES TIDAL FRESH ZONE
TF2.4	BOUY 44 BETWEEN POSSUM POINT AND MOSS POINT; CHARACTERIZES TIDAL FRESH/TRANSITION ZONE
TF3.3	RAPPAHANNOCK RIVER AT JONES CREEK? (VIMS SLACK WATER #N40)
TF4.2	PAMUNKEY RIVER AT WHITE HOUSE, VA
WE4.2	MOUTH OF THE YORK RIVER, MID-CHANNEL
WT5.1	PATAPSCO RIVER, EAST OF HAWKINS POINT AT BUOY 5M; CHARACTERIZES LOWER ESTUARINE
WT6.1	MAGOTHY RIVER, NORTH OF SOUTH FERRY POINT AT BUOY FL R12; CHARACTERIZES LOWER ESTUARINE
WT8.1	SOUTH RIVER, SOUTH OF POPLAR POINT AT DAY MARKER R-"16"; CHARACTERIZES LOWER ESTUARINE

TAB_VALUE_TYPE

Field Name	Description	Data Type	Length
VALUE_TYPE (PK,FK)	VALUE TYPE CODE	CHAR	3
VALUE_TYPE_ DEFINITION	CODE DEFINITON	VARCHAR	10

General: This table stores information relating to the type of measurement a parameter is. This code is used primary in the BIOMASS_SETVOL TABLE. Additional codes may be added as needed. Currently accepted VALUE_TYPE designations are as follows:

- A ACTUAL MEASUREMENT OF A PARAMETER VALUE
- E ESTIMATED MEASUREMENT OF A PARAMETER VALUE

SECONDARY LOOK-UP TABLES

The following lookup tables are present in the database but are not linked to the main or lookup tables of the database. They can be used in queries to add additional fields exclusively to the WQ_DATA table. They include codes related to parameter names, sampling methods, and laboratory analysis of water quality samples.

TAB_CRUISE_TABLE

Field Name	Description	Data Type	Length
CRUISE (PK,NN)	OLD CBP CRUISE NUMBER	CHAR	6
START_DATE (U,NN)	STARTING DATE OF CRUISE	SMALLDATE TIME	8
END_DATE (U,NN)	ENDING DATE OF CRUISE	SMALLDATE TIME	8
NEWCRUISE	NEWCRUISE-1998 CBP cruise designation	CHAR	7

General: This table stores information relating to the time periods of water quality Monitoring Cruises. Cruise periods are a tool used as a data grouping mechanism for analysis. The field NEWCRUISE was a proposed system for reassigning cruise numbers that was never fully adapted.

CRUISE START_DATE END_DATE NEWCRUISE

BAY001 6/15/1984 6/30/1984 198406A
 BAY002 7/1/1984 7/15/1984 198407A
 BAY003 7/16/1984 7/31/1984 198407B
 BAY004 8/1/1984 8/15/1984 198408A
 BAY005 8/16/1984 8/31/1984 198408B
 BAY006 9/1/1984 9/15/1984 198409A
 BAY007 9/16/1984 9/30/1984 198409B
 BAY008 10/1/1984 10/15/1984 198410A
 BAY009 10/16/1984 10/31/1984 198410B
 BAY010 11/1/1984 11/30/1984 198411A
 BAY011 12/1/1984 12/31/1984 198412A
 BAY012 1/1/1985 1/31/1985 198501A
 BAY013 2/1/1985 2/28/1985 198502A
 BAY014 3/1/1985 3/15/1985 198503A
 BAY015 3/16/1985 3/31/1985 198503B
 BAY016 4/1/1985 4/15/1985 198504A
 BAY017 4/16/1985 4/30/1985 198504B
 BAY018 5/1/1985 5/15/1985 198505A
 BAY019 5/16/1985 5/31/1985 198505B
 BAY020 6/1/1985 6/15/1985 198506A
 BAY021 6/16/1985 6/30/1985 198506B
 BAY022 7/1/1985 7/15/1985 198507A
 BAY023 7/16/1985 7/31/1985 198507B
 BAY024 8/1/1985 8/15/1985 198508A
 BAY025 8/16/1985 8/31/1985 198508B
 BAY026 9/1/1985 9/15/1985 198509A
 BAY027 9/16/1985 10/2/1985 198509B
 BAY028 10/3/1985 10/14/1985 198510A
 BAY029 10/15/1985 11/6/1985 198510B

CRUISE START_DATE END_DATE NEWCRUISE

BAY030 11/7/1985 11/30/1985 198511A
 BAY031 12/1/1985 12/31/1985 198512A
 BAY032 1/1/1986 1/31/1986 198601A
 BAY033 2/1/1986 2/28/1986 198602A
 BAY034 3/1/1986 3/15/1986 198603A
 BAY035 3/16/1986 3/31/1986 198603B
 BAY036 4/1/1986 4/15/1986 198604A
 BAY037 4/16/1986 4/30/1986 198604B
 BAY038 5/1/1986 5/15/1986 198605A
 BAY039 5/16/1986 5/31/1986 198605B
 BAY040 6/1/1986 6/15/1986 198606A
 BAY041 6/16/1986 6/30/1986 198606B
 BAY042 7/1/1986 7/15/1986 198607A
 BAY043 7/16/1986 7/31/1986 198607B
 BAY044 8/1/1986 8/15/1986 198608A
 BAY045 8/16/1986 8/31/1986 198608B
 BAY046 9/1/1986 9/15/1986 198609A
 BAY047 9/16/1986 9/30/1986 198609B
 BAY048 10/1/1986 10/15/1986 198610A
 BAY049 10/16/1986 10/31/1986 198610B
 BAY050 11/1/1986 11/30/1986 198611A
 BAY051 12/1/1986 12/31/1986 198612A
 BAY052 1/1/1987 1/31/1987 198701A
 BAY053 2/1/1987 2/28/1987 198702A
 BAY054 3/1/1987 3/15/1987 198703A
 BAY055 3/16/1987 3/31/1987 198703B
 BAY056 4/1/1987 4/15/1987 198704A
 BAY057 4/16/1987 4/30/1987 198704B
 BAY058 5/1/1987 5/15/1987 198705A

CRUISE START_DATE END_DATE NEWCRUISE

BAY059 5/16/1987 5/31/1987 198705B
BAY060 6/1/1987 6/15/1987 198706A
BAY061 6/16/1987 6/30/1987 198706B
BAY062 7/1/1987 7/17/1987 198707A
BAY063 7/18/1987 7/31/1987 198707B
BAY064 8/1/1987 8/15/1987 198708A
BAY065 8/16/1987 8/31/1987 198708B
BAY066 9/1/1987 9/15/1987 198709A
BAY067 9/16/1987 9/30/1987 198709B
BAY068 10/1/1987 10/15/1987 198710A
BAY069 10/16/1987 10/31/1987 198710B
BAY070 11/1/1987 11/30/1987 198711A
BAY071 12/1/1987 12/31/1987 198712A
BAY072 1/1/1988 1/31/1988 198801A
BAY073 2/1/1988 2/28/1988 198802A
BAY074 3/1/1988 3/15/1988 198803A
BAY075 3/16/1988 3/31/1988 198803B
BAY076 4/1/1988 4/15/1988 198804A
BAY077 4/16/1988 4/30/1988 198804B
BAY078 5/1/1988 5/15/1988 198805A
BAY079 5/16/1988 5/31/1988 198805B
BAY080 6/1/1988 6/14/1988 198806A
BAY081 6/15/1988 6/30/1988 198806B
BAY082 7/1/1988 7/15/1988 198807A
BAY083 7/16/1988 7/31/1988 198807B
BAY084 8/1/1988 8/15/1988 198808A
BAY085 8/16/1988 8/31/1988 198808B
BAY086 9/1/1988 9/13/1988 198809A
BAY087 9/14/1988 9/30/1988 198809B
BAY088 10/1/1988 10/15/1988 198810A
BAY089 10/16/1988 10/31/1988 198810B
BAY090 11/1/1988 11/30/1988 198811A
BAY091 12/1/1988 12/31/1988 198812A
BAY092 1/1/1989 1/31/1989 198901A
BAY093 2/1/1989 2/28/1989 198902A
BAY094 3/1/1989 3/15/1989 198903A
BAY095 3/16/1989 3/31/1989 198903B
BAY096 4/1/1989 4/15/1989 198904A
BAY097 4/16/1989 4/30/1989 198904B
BAY098 5/1/1989 5/15/1989 198905A
BAY099 5/16/1989 5/31/1989 198905B
BAY100 6/1/1989 6/15/1989 198906A
BAY101 6/16/1989 6/30/1989 198906B
BAY102 7/1/1989 7/15/1989 198907A
BAY103 7/16/1989 7/31/1989 198907B
BAY104 8/1/1989 8/15/1989 198908A
BAY105 8/16/1989 8/31/1989 198908B
BAY106 9/1/1989 9/15/1989 198909A
BAY107 9/16/1989 9/30/1989 198909B
BAY108 10/1/1989 10/15/1989 198910A
BAY109 10/16/1989 10/31/1989 198910B
BAY110 11/1/1989 11/30/1989 198911A
BAY111 12/1/1989 12/31/1989 198912A
BAY112 1/1/1990 1/31/1990 199001A
BAY113 2/1/1990 2/28/1990 199002A
BAY114 3/1/1990 3/15/1990 199003A
BAY115 3/16/1990 3/31/1990 199003B

CRUISE START_DATE END_DATE NEWCRUISE

BAY116 4/1/1990 4/15/1990 199004A
BAY117 4/16/1990 4/30/1990 199004B
BAY118 5/1/1990 5/15/1990 199005A
BAY119 5/16/1990 5/31/1990 199005B
BAY120 6/1/1990 6/15/1990 199006A
BAY121 6/16/1990 6/30/1990 199006B
BAY122 7/1/1990 7/15/1990 199007A
BAY123 7/16/1990 7/31/1990 199007B
BAY124 8/1/1990 8/15/1990 199008A
BAY125 8/16/1990 8/31/1990 199008B
BAY126 9/1/1990 9/15/1990 199009A
BAY127 9/16/1990 9/30/1990 199009B
BAY128 10/1/1990 10/15/1990 199010A
BAY129 10/16/1990 10/31/1990 199010B
BAY130 11/1/1990 11/30/1990 199011A
BAY131 12/1/1990 12/31/1990 199012A
BAY132 1/1/1991 1/31/1991 199101A
BAY133 2/1/1991 2/28/1991 199102A
BAY134 3/1/1991 3/15/1991 199103A
BAY135 3/16/1991 3/31/1991 199103B
BAY136 4/1/1991 4/15/1991 199104A
BAY137 4/16/1991 4/30/1991 199104B
BAY138 5/1/1991 5/15/1991 199105A
BAY139 5/16/1991 5/31/1991 199105B
BAY140 6/1/1991 6/15/1991 199106A
BAY141 6/16/1991 6/30/1991 199106B
BAY142 7/1/1991 7/15/1991 199107A
BAY143 7/16/1991 7/31/1991 199107B
BAY144 8/1/1991 8/15/1991 199108A
BAY145 8/16/1991 8/31/1991 199108B
BAY146 9/1/1991 9/15/1991 199109A
BAY147 9/16/1991 9/30/1991 199109B
BAY148 10/1/1991 10/15/1991 199110A
BAY149 10/16/1991 10/31/1991 199110B
BAY150 11/1/1991 11/30/1991 199111A
BAY151 12/1/1991 12/31/1991 199112A
BAY152 1/1/1992 1/31/1992 199201A
BAY153 2/1/1992 2/28/1992 199202A
BAY154 3/1/1992 3/15/1992 199203A
BAY155 3/16/1992 3/31/1992 199203B
BAY156 4/1/1992 4/15/1992 199204A
BAY157 4/16/1992 4/30/1992 199204B
BAY158 5/1/1992 5/15/1992 199205A
BAY159 5/16/1992 5/31/1992 199205B
BAY160 6/1/1992 6/15/1992 199206A
BAY161 6/16/1992 6/30/1992 199206B
BAY162 7/1/1992 7/15/1992 199207A
BAY163 7/16/1992 7/31/1992 199207B
BAY164 8/1/1992 8/15/1992 199208A
BAY165 8/16/1992 8/31/1992 199208B
BAY166 9/1/1992 9/15/1992 199209A
BAY167 9/16/1992 9/30/1992 199209B
BAY168 10/1/1992 10/15/1992 199210A
BAY169 10/16/1992 10/31/1992 199210B
BAY170 11/1/1992 11/30/1992 199211A
BAY171 12/1/1992 12/31/1992 199212A
BAY172 1/1/1993 1/31/1993 199301A

CRUISE START_DATE END_DATE NEWCRUISE

BAY173 2/1/1993 2/28/1993 199302A
BAY174 3/1/1993 3/15/1993 199303A
BAY175 3/16/1993 3/31/1993 199303B
BAY176 4/1/1993 4/15/1993 199304A
BAY177 4/16/1993 4/30/1993 199304B
BAY178 5/1/1993 5/15/1993 199305A
BAY179 5/16/1993 5/31/1993 199305B
BAY180 6/1/1993 6/15/1993 199306A
BAY181 6/16/1993 6/30/1993 199306B
BAY182 7/1/1993 7/15/1993 199307A
BAY183 7/16/1993 7/31/1993 199307B
BAY184 8/1/1993 8/15/1993 199308A
BAY185 8/16/1993 8/31/1993 199308B
BAY186 9/1/1993 9/15/1993 199309A
BAY187 9/16/1993 9/30/1993 199309B
BAY188 10/1/1993 10/15/1993 199310A
BAY189 10/16/1993 10/31/1993 199310B
BAY190 11/1/1993 11/30/1993 199311A
BAY191 12/1/1993 12/31/1993 199312A
BAY192 1/1/1994 1/31/1994 199401A
BAY193 2/1/1994 2/28/1994 199402A
BAY194 3/1/1994 3/15/1994 199403A
BAY195 3/16/1994 3/31/1994 199403B
BAY196 4/1/1994 4/15/1994 199404A
BAY197 4/16/1994 4/30/1994 199404B
BAY198 5/1/1994 5/15/1994 199405A
BAY199 5/16/1994 5/31/1994 199405B
BAY200 6/1/1994 6/15/1994 199406A
BAY201 6/16/1994 6/30/1994 199406B
BAY202 7/1/1994 7/15/1994 199407A
BAY203 7/16/1994 7/31/1994 199407B
BAY204 8/1/1994 8/15/1994 199408A
BAY205 8/16/1994 8/31/1994 199408B
BAY206 9/1/1994 9/15/1994 199409A
BAY207 9/16/1994 9/30/1994 199409B
BAY208 10/1/1994 10/15/1994 199410A
BAY209 10/16/1994 10/31/1994 199410B
BAY210 11/1/1994 11/30/1994 199411A
BAY211 12/1/1994 12/31/1994 199412A
BAY212 1/1/1995 1/31/1995 199501A
BAY213 2/1/1995 2/28/1995 199502A
BAY214 3/1/1995 3/15/1995 199503A
BAY215 3/16/1995 3/31/1995 199503B
BAY216 4/1/1995 4/15/1995 199504A
BAY217 4/16/1995 4/30/1995 199504B
BAY218 5/1/1995 5/15/1995 199505A
BAY219 5/16/1995 5/31/1995 199505B
BAY220 6/1/1995 6/15/1995 199506A
BAY221 6/16/1995 6/30/1995 199506B
BAY222 7/1/1995 7/15/1995 199507A
BAY223 7/16/1995 7/31/1995 199507B
BAY224 8/1/1995 8/15/1995 199508A
BAY225 8/16/1995 8/31/1995 199508B
BAY226 9/1/1995 9/15/1995 199509A
BAY227 9/16/1995 9/30/1995 199509B
BAY228 10/1/1995 10/15/1995 199510A
BAY229 10/16/1995 10/31/1995 199510B

CRUISE START_DATE END_DATE NEWCRUISE

BAY230 11/1/1995 11/30/1995 199511A
BAY231 12/1/1995 12/31/1995 199512A
BAY232 1/1/1996 1/31/1996 199601A
BAY233 2/1/1996 2/29/1996 199602A
BAY234 3/1/1996 3/15/1996 199603A
BAY235 3/16/1996 3/31/1996 199603B
BAY236 4/1/1996 4/15/1996 199604A
BAY237 4/16/1996 4/30/1996 199604B
BAY238 5/1/1996 5/15/1996 199605A
BAY239 5/16/1996 5/31/1996 199605B
BAY240 6/1/1996 6/15/1996 199606A
BAY241 6/16/1996 6/30/1996 199606B
BAY242 7/1/1996 7/15/1996 199607A
BAY243 7/16/1996 7/31/1996 199607B
BAY244 8/1/1996 8/15/1996 199608A
BAY245 8/16/1996 8/31/1996 199608B
BAY246 9/1/1996 9/15/1996 199609A
BAY247 9/16/1996 9/30/1996 199609B
BAY248 10/1/1996 10/15/1996 199610A
BAY249 10/16/1996 10/31/1996 199610B
BAY250 11/1/1996 11/30/1996 199611A
BAY251 12/1/1996 12/31/1996 199612A
BAY252 1/1/1997 1/31/1997 199701A
BAY253 2/1/1997 2/28/1997 199702A
BAY254 3/1/1997 3/15/1997 199703A
BAY255 3/16/1997 3/31/1997 199703B
BAY256 4/1/1997 4/13/1997 199704A
BAY257 4/14/1997 4/30/1997 199704B
BAY258 5/1/1997 5/15/1997 199705A
BAY259 5/16/1997 5/31/1997 199705B
BAY260 6/1/1997 6/15/1997 199706A
BAY261 6/16/1997 6/30/1997 199706B
BAY262 7/1/1997 7/17/1997 199707A
BAY263 7/18/1997 7/31/1997 199707B
BAY264 8/1/1997 8/15/1997 199708A
BAY265 8/16/1997 8/31/1997 199708B
BAY266 9/1/1997 9/15/1997 199709A
BAY267 9/16/1997 9/30/1997 199709B
BAY268 10/1/1997 10/17/1997 199710A
BAY269 10/18/1997 10/31/1997 199710B
BAY270 11/1/1997 11/30/1997 199711A
BAY271 12/1/1997 12/31/1997 199712A
BAY272 1/1/1998 1/31/1998 199801A
BAY273 2/1/1998 2/28/1998 199802A
BAY274 3/1/1998 3/15/1998 199803A
BAY275 3/16/1998 3/31/1998 199803B
BAY276 4/1/1998 4/15/1998 199804A
BAY277 4/16/1998 4/30/1998 199804B
BAY278 5/1/1998 5/15/1998 199805A
BAY279 5/16/1998 5/31/1998 199805B
BAY280 6/1/1998 6/14/1998 199806A
BAY281 6/15/1998 6/30/1998 199806B
BAY282 7/1/1998 7/15/1998 199807A
BAY283 7/16/1998 7/31/1998 199807B
BAY284 8/1/1998 8/15/1998 199808A
BAY285 8/16/1998 8/31/1998 199808B
BAY286 9/1/1998 9/13/1998 199809A

CRUISE START_DATE END_DATE NEWCRUISE

BAY287 9/14/1998 9/30/1998 199809B
BAY288 10/1/1998 10/15/1998 199810A
BAY289 10/16/1998 10/31/1998 199810B
BAY290 11/1/1998 11/30/1998 199811A
BAY291 12/1/1998 12/31/1998 199812A
BAY292 1/1/1999 1/31/1999 199901A
BAY293 2/1/1999 2/28/1999 199902A
BAY294 3/1/1999 3/14/1999 199903A
BAY295 3/15/1999 3/31/1999 199903B
BAY296 4/1/1999 4/15/1999 199904A
BAY297 4/16/1999 4/30/1999 199904B
BAY298 5/1/1999 5/15/1999 199905A
BAY299 5/16/1999 5/31/1999 199905B
BAY300 6/1/1999 6/13/1999 199906A
BAY301 6/14/1999 6/30/1999 199906B
BAY302 7/1/1999 7/16/1999 199907A
BAY303 7/17/1999 7/31/1999 199907B
BAY304 8/1/1999 8/15/1999 199908A
BAY305 8/16/1999 8/30/1999 199908B
BAY306 9/1/1999 9/15/1999 199909A
BAY307 9/15/1999 9/30/1999 199909B
BAY308 10/1/1999 10/15/1999 199910A
BAY309 10/16/1999 10/31/1999 199910B
BAY310 11/1/1999 11/30/1999 199911A
BAY311 12/1/1999 12/31/1999 199912A
BAY312 1/1/2000 1/31/2000 200001A
BAY313 2/1/2000 2/29/2000 200002A
BAY314 3/1/2000 3/15/2000 200003A
BAY315 3/16/2000 3/31/2000 200003B
BAY316 4/1/2000 4/15/2000 200004A
BAY317 4/16/2000 4/30/2000 200004B
BAY318 5/1/2000 5/15/2000 200005A
BAY319 5/16/2000 5/31/2000 200005B
BAY320 6/1/2000 6/15/2000 200006A
BAY321 6/16/2000 6/30/2000 200006B
BAY322 7/1/2000 7/15/2000 200007A
BAY323 7/16/2000 7/31/2000 200007B
BAY324 8/1/2000 8/15/2000 200008A
BAY325 8/16/2000 8/30/2000 200008B
BAY326 9/1/2000 9/15/2000 200009A
BAY327 9/16/2000 9/30/2000 200009B
BAY328 10/1/2000 10/15/2000 200010A
BAY329 10/16/2000 10/31/2000 200010B
BAY330 11/1/2000 11/30/2000 200011A
BAY331 12/1/2000 12/31/2000 200012A
BAY332 1/1/2001 1/31/2001 200101A
BAY333 2/1/2001 2/28/2001 200102A
BAY334 3/1/2001 3/15/2001 200103A
BAY335 3/16/2001 3/31/2001 200103B
BAY336 4/1/2001 4/15/2001 200104A
BAY337 4/16/2001 4/30/2001 200104B
BAY338 5/1/2001 5/15/2001 200105A
BAY339 5/16/2001 5/31/2001 200105B
BAY340 6/1/2001 6/15/2001 200106A
BAY341 6/16/2001 6/30/2001 200106B
BAY342 7/1/2001 7/15/2001 200107A
BAY343 7/16/2001 7/31/2001 200107B

CRUISE START_DATE END_DATE NEWCRUISE

BAY344 8/1/2001 8/16/2001 200108A
BAY345 8/17/2001 8/31/2001 200108B
BAY346 9/1/2001 9/15/2001 200109A
BAY347 9/16/2001 9/30/2001 200109B
BAY348 10/1/2001 10/18/2001 200110A
BAY349 10/19/2001 10/31/2001 200110B
BAY350 11/1/2001 11/30/2001 200111A
BAY351 12/1/2001 12/31/2001 200112A
BAY352 1/8/2002 1/31/2002 200201A
BAY353 2/1/2002 2/28/2002 200202A
BAY354 3/1/2002 3/15/2002 200203A
BAY355 3/16/2002 3/31/2002 200203B
BAY356 4/1/2002 4/15/2002 200204A
BAY357 4/16/2002 4/30/2002 200204B
BAY358 5/1/2002 5/15/2002 200205A
BAY359 5/16/2002 5/31/2002 200205B
BAY360 6/1/2002 6/15/2002 200206A
BAY361 6/16/2002 6/30/2002 200206B
BAY362 7/1/2002 7/15/2002 200207A
BAY363 7/16/2002 7/31/2002 200207B
BAY364 8/1/2002 8/15/2002 200208A
BAY365 8/16/2002 8/31/2002 200208B
BAY366 9/1/2002 9/15/2002 200209A
BAY367 9/16/2002 9/30/2002 200209B
BAY368 10/1/2002 10/15/2002 200210A
BAY369 10/16/2002 10/31/2002 200210B
BAY370 11/1/2002 11/30/2002 200211A
BAY371 12/1/2002 12/31/2002 200212A
BAY372 1/1/2003 1/31/2003 200301A
BAY373 2/1/2003 2/28/2003 200302A
BAY374 3/1/2003 3/15/2003 200303A
BAY375 3/16/2003 3/31/2003 200303B
BAY376 4/1/2003 4/15/2003 200304A
BAY377 4/16/2003 4/30/2003 200304B
BAY378 5/1/2003 5/15/2003 200305A
BAY379 5/16/2003 5/31/2003 200305B
BAY380 6/1/2003 6/15/2003 200306A
BAY381 6/16/2003 6/30/2003 200306B
BAY382 7/1/2003 7/15/2003 200307A
BAY383 7/16/2003 7/31/2003 200307B
BAY384 8/1/2003 8/15/2003 200308A
BAY385 8/16/2003 8/31/2003 200308B
BAY386 9/1/2003 9/15/2003 200309A
BAY387 9/16/2003 9/30/2003 200309B
BAY388 10/1/2003 10/15/2003 200210A
BAY389 10/16/2003 10/31/2003 200210B
BAY390 11/1/2003 11/30/2003 200211A
BAY391 12/1/2003 12/31/2003 200212A
BAY392 1/6/2004 1/30/2004 200401A
BAY393 2/1/2004 2/29/2004 200402A
BAY394 3/1/2004 3/30/2004 200403A
BAY396 4/1/2004 4/15/2004 200404A
BAY397 4/16/2004 4/30/2004 200404B
BAY398 5/1/2004 5/15/2004 200405A
BAY399 5/16/2004 5/31/2004 200405B
BAY400 6/1/2004 6/15/2004 200406A
BAY401 6/16/2004 6/30/2004 200406B

CRUISE	START_DATE	END_DATE	NEWCRUISE
BAY402	7/1/2004	7/14/2004	200407A
BAY403	7/15/2004	7/31/2004	200407B
BAY404	8/1/2004	8/15/2004	200408A
BAY405	8/16/2004	8/31/2004	200408B
BAY406	9/1/2004	9/15/2004	200409A
BAY407	9/16/2004	9/30/2004	200409B
BAY408	10/1/2004	10/15/2004	200410A
BAY409	10/16/2004	10/31/2004	200410B
BAY410	11/1/2004	11/30/2004	200411A
BAY411	12/1/2004	12/31/2004	200412A
BAY412	1/5/2005	1/31/2005	200501A
BAY413	2/1/2005	2/28/2005	200502A
BAY414	3/1/2005	3/17/2005	200503A
BAY415	3/18/2005	3/31/2005	200503B
BAY416	4/1/2005	4/15/2005	200504A
BAY417	4/16/2005	4/30/2005	200504B
BAY418	5/1/2005	5/15/2005	200505A
BAY419	5/16/2005	5/31/2005	200505B
BAY420	6/1/2005	6/15/2005	200506A
BAY421	6/16/2005	6/30/2005	200506B
BAY422	7/1/2005	7/15/2005	200507A
BAY423	7/16/2005	7/31/2005	200507B
BAY424	8/1/2005	8/15/2005	200508A
BAY425	8/16/2005	8/31/2005	200508B
BAY426	9/1/2005	9/15/2005	200509A
BAY427	9/16/2005	9/30/2005	200509B
BAY428	10/1/2005	10/15/2005	200510A
BAY429	10/16/2005	10/31/2005	200510B
BAY430	11/1/2005	11/30/2005	200511A
BAY431	12/1/2005	12/31/2005	200512A
BAY432	1/1/2006	1/31/2006	200601A
BAY433	2/1/2006	2/28/2006	200602A
BAY434	3/1/2006	3/31/2006	200603A
BAY435	4/1/2006	4/15/2006	200604A

CRUISE	START_DATE	END_DATE	NEWCRUISE
BAY436	4/16/2006	4/30/2006	200604B
BAY437	5/1/2006	5/15/2006	200605A
BAY438	5/16/2006	5/31/2006	200606B
BAY439	6/1/2006	6/15/2006	200606A
BAY440	6/16/2006	6/30/2006	200606B
BAY441	7/1/2006	7/15/2006	200607A
BAY442	7/16/2006	7/31/2006	200607B
BAY443	8/1/2006	8/17/2006	200608A
BAY444	8/18/2006	8/31/2006	200608B
BAY445	9/1/2006	9/30/2006	200609A
BAY446	10/1/2006	10/31/2006	200610A
BAY447	11/1/2006	11/30/2006	200611A
BAY448	12/1/2006	12/31/2006	200612A
BAY452	1/3/2007	1/31/2007	200701A
BAY453	2/1/2007	2/28/2007	200702A
BAY454	3/1/2007	3/15/2007	200703A
BAY455	3/16/2007	3/30/2007	200703B
BAY456	4/1/2007	4/15/2007	200704A
BAY457	4/16/2007	4/30/2007	200704B
BAY458	5/1/2007	5/15/2007	200705A
BAY459	5/16/2007	5/31/2007	200705B
BAY460	6/1/2007	6/15/2007	200706A
BAY461	6/16/2007	6/30/2007	200706B
BAY462	7/1/2007	7/15/2007	200707A
BAY463	7/16/2007	7/31/2007	200707B
BAY464	8/1/2007	8/15/2007	200708A
BAY465	8/16/2007	8/31/2007	200708B
BAY466	9/1/2007	9/15/2007	200709A
BAY467	9/16/2007	9/30/2007	200709B
BAY468	10/1/2007	10/15/2007	200710A
BAY469	10/16/2007	10/31/2007	200710B
BAY470	11/1/2006	11/30/2007	200711A
BAY471	12/1/2007	12/31/2007	200712A

TAB_PI_SPECIES_LIST

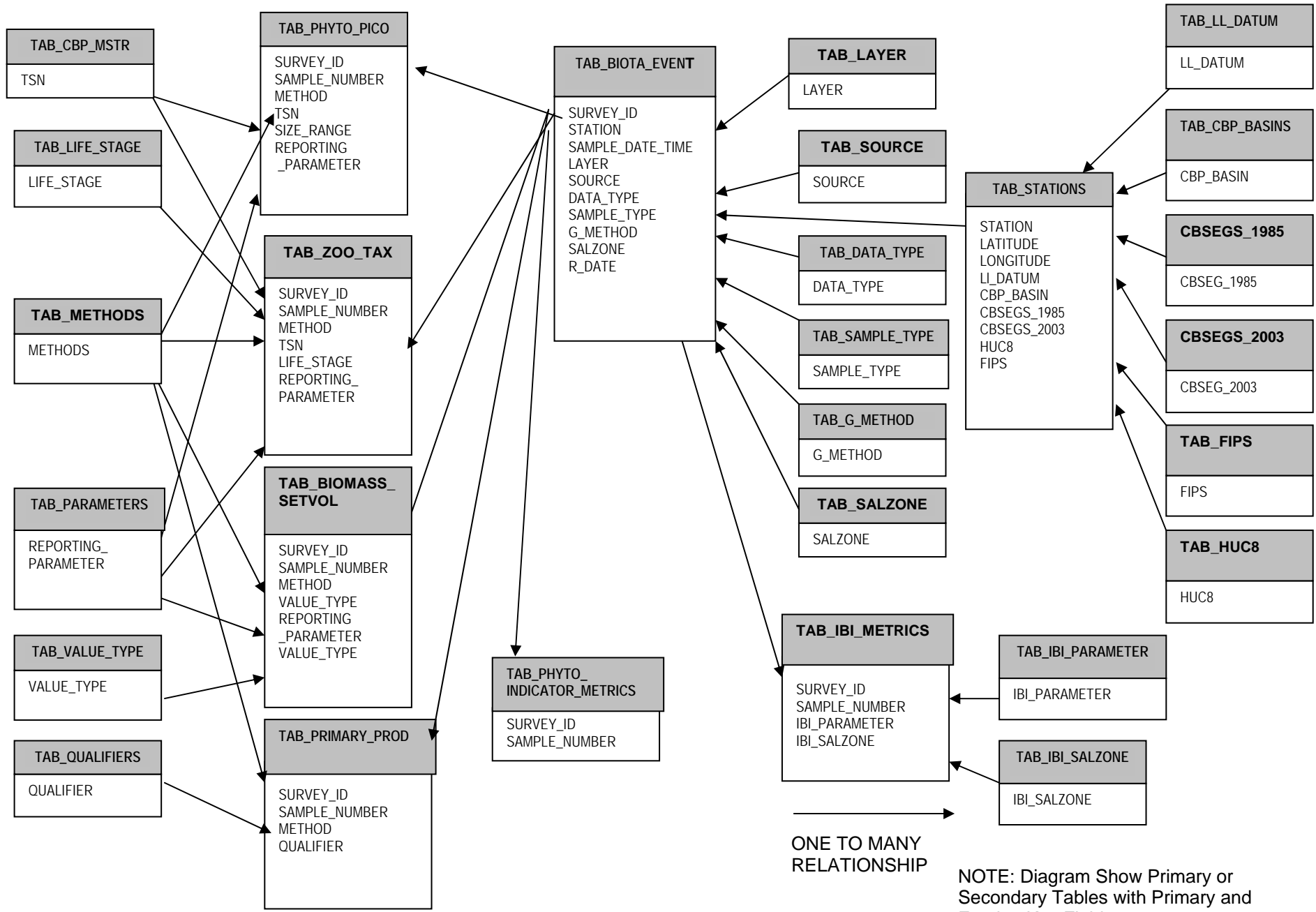
Field Name	Description	Data Type	Length
SPEC_CODE (PK,FK,NN)	SOURCE IN-HOUSE SPECIES CODE	Text	14
SOURCE (PK,FK,NN)	DATA GENERATING AGENCY- Code identifying data generator	Text	6
DATA_TYPE (PK,FK,NN)	SAMPLE TYPE CODE- Denotes type of sample collected see DATA_TYPE TABLE for codes	Text	2
SOURCE_LBL	SOURCE IN-HOUSE SPECIES LATIN NAME	Text	45
LBL	FULL SPECIES LABEL- Latin Name Corrected to IT IS accepted spelling	Text	45

Field Name	Description	Data Type	Length
TSN (PK,PK,NN)	TAXON SERIAL NUMBER- ITIS Serial Number for Species Identification	Text	7
R_DATE	VERSION DATE- Date denoting when data records were entered in to database	Date/Time	8
VOLUME	BIOMASS CONVERSION VALUE Conversion factor to estimate biomass from a organism count	Number (Double)	8
SIZE	SPECIES CELL SIZE DESCRIPTOR- Additional species identifier- PHYTO_PICO TABLE ONLY	Text	30
LIFE_STAGE	SPECIES LIFESTAGE- Additional species identifier- ZOOTAX TABLE ONLY	Text	3

General: This table stores information relating to the Source SPEC_CODE. This database uses the Interagency Taxonomic Identification System (ITIS) Taxon Serial Numbers (TSN) for species identification within the database. For species with no TSN values temporary Chesapeake Bay TSN's are generated until a species can be submitted to ITIS for recognition. All data generators had developed and implemented internal species coding systems prior to the development of the ITIS standard. This table is provided as a conversion table from Source in-house species codes to ITIS TSN's prior to loading data to either the PHYTO_PICO TABLE or the ZOO_TAX TABLE.

APPENDIX A. DATABASE ENTITY RELATIONSHIP DIAGRAM

PHYTOPLANKTON AND ZOOPLANKTON DATABASE DESIGN AND DATA DICTIONARY



NOTE: Diagram Show Primary or Secondary Tables with Primary and Foreign Key Fields