

# Sustaining Monitoring Networks: Recommendations for Water-Quality Monitoring and Assessment

CBP Water-Quality Goal Team

June 22, 2015

Peter Tango (USGS@CBPO)

on behalf of STAR



# BASIN

Building and Sustaining Integrated Networks

Phase I



Phase II



Phase III

Short-Term Gap Filling  
Solutions for FY13

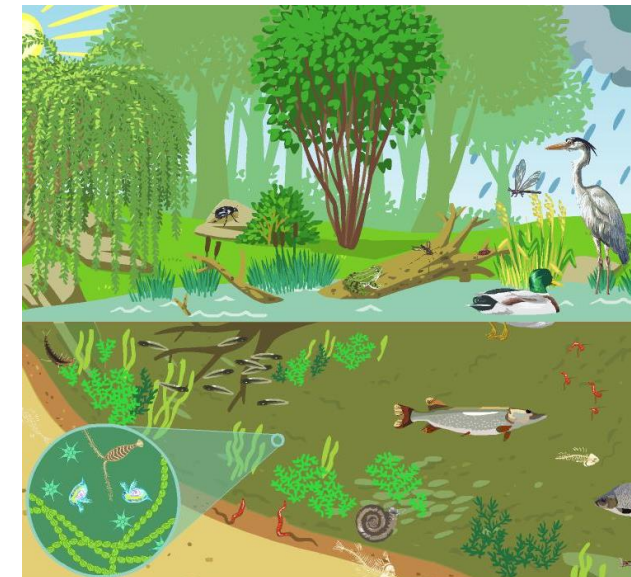
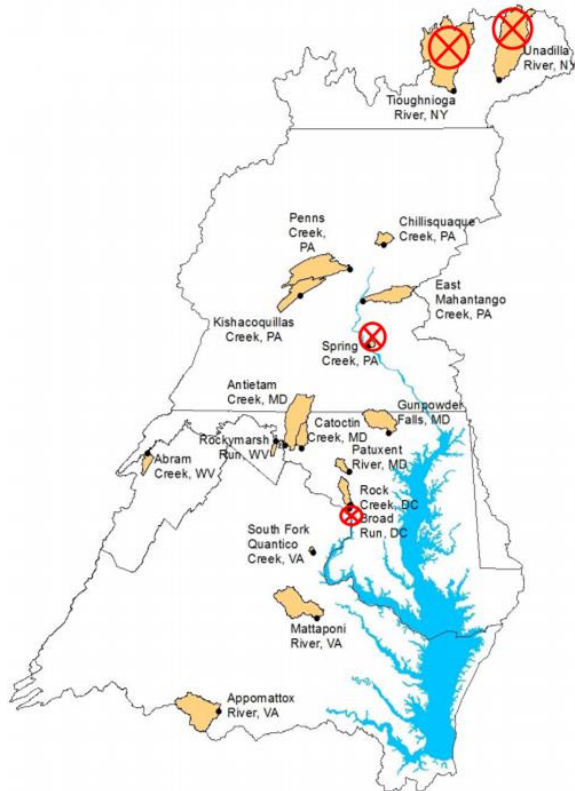
June - December 2013

Water Quality Monitoring Networks  
Exploration

January - December 2014

2014 Watershed  
Agreement  
Monitoring Needs

Ongoing



Credit: eduMedia

# Sustaining Monitoring: Making Adjustments

Policy Agreements

Funding Priorities

Funding Availability

Changing Science

Changing  
Leadership

Inflation



## CBP Partnership Reviews

### *Alignment with Chesapeake 2000 Agreement*

- Watershed Loads
- Bay Shallow water Monitoring Programs
- End Zooplankton Program

### *STAC 2007-09 Review: Monitoring Realignment*

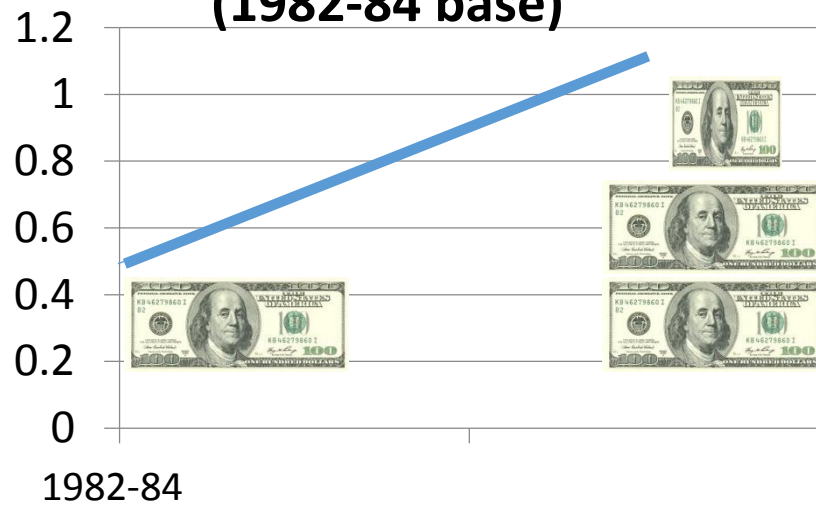
- Water quality standards attainment;
- Basin focus assessing BMPs
- End Phytoplankton Program

### **TMDL and Standards Attainment**

# Building and Sustaining Networks: Pressures on Financial Planning



**Consumer Price Index  
(1982-84 base)**



In 2013 it required about \$234 to afford what \$100 could purchase in 1982/4. That's about a 2.5x increase over 30 yrs.

## ***INFLATIONARY PRESSURES***

<http://www.statista.com/statistics/190974/unadjusted-consumer-price-index-of-all-urban-consumers-in-the-us-since-1992/>

## ***Local to Regional Scale Events:***

- Harmful Algal Blooms (HABs) can introduce food security and human health threats.
- Public pressure may demand increased monitoring information.





# BASIN

Building and Sustaining Integrated Networks

Phase I



Phase II



Phase III

Short-Term Gap Filling  
Solutions for FY13

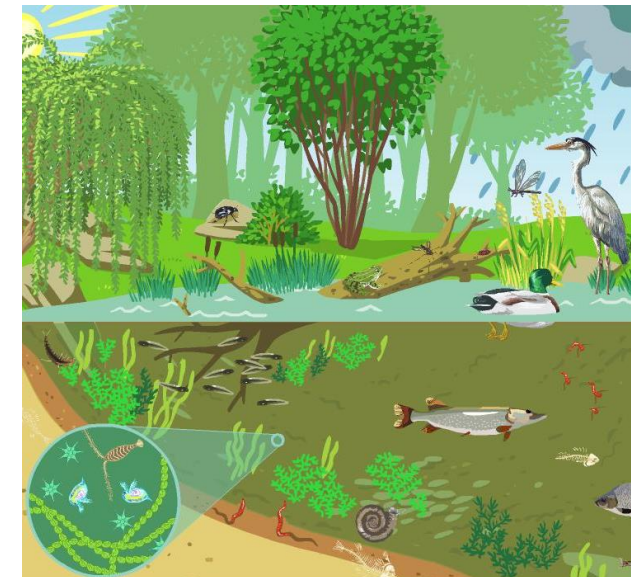
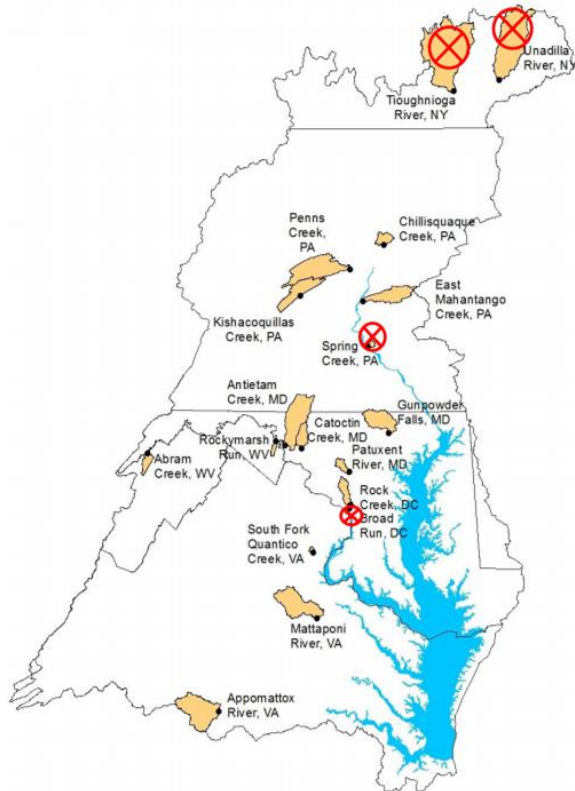
June - December 2013

Water Quality Monitoring Networks  
Exploration

January - December 2014

2014 Watershed  
Agreement  
Monitoring Needs

Ongoing



Credit: eduMedia

# Building Environmental Intelligence Report: Leading the future of water-quality monitoring

- What we know
- What we learned: Global Seminar Series
- What we recommend
  - Water-quality standards
  - Explaining response to management actions
  - Sustaining Resources
- Summary of recommendations



- Authors: Lea Rubin Peter Tango, Scott Phillips, Mark Bennett, Bill Dennison



# Decision Support



*Credit: Council of Communication Associations*

“Addressing the needs of the CBP partners requires monitoring to support adaptive management and communication of results to inform decision makers.”

- TMDL and Standards Attainment
- Evaluate progress, WIPs
- User Council



# Citizen Science



*Credit: Wisconsin's Citizen-Based Water Monitoring Network*

“Citizen Science has tremendous potential but requires coordination, training and continuity.”

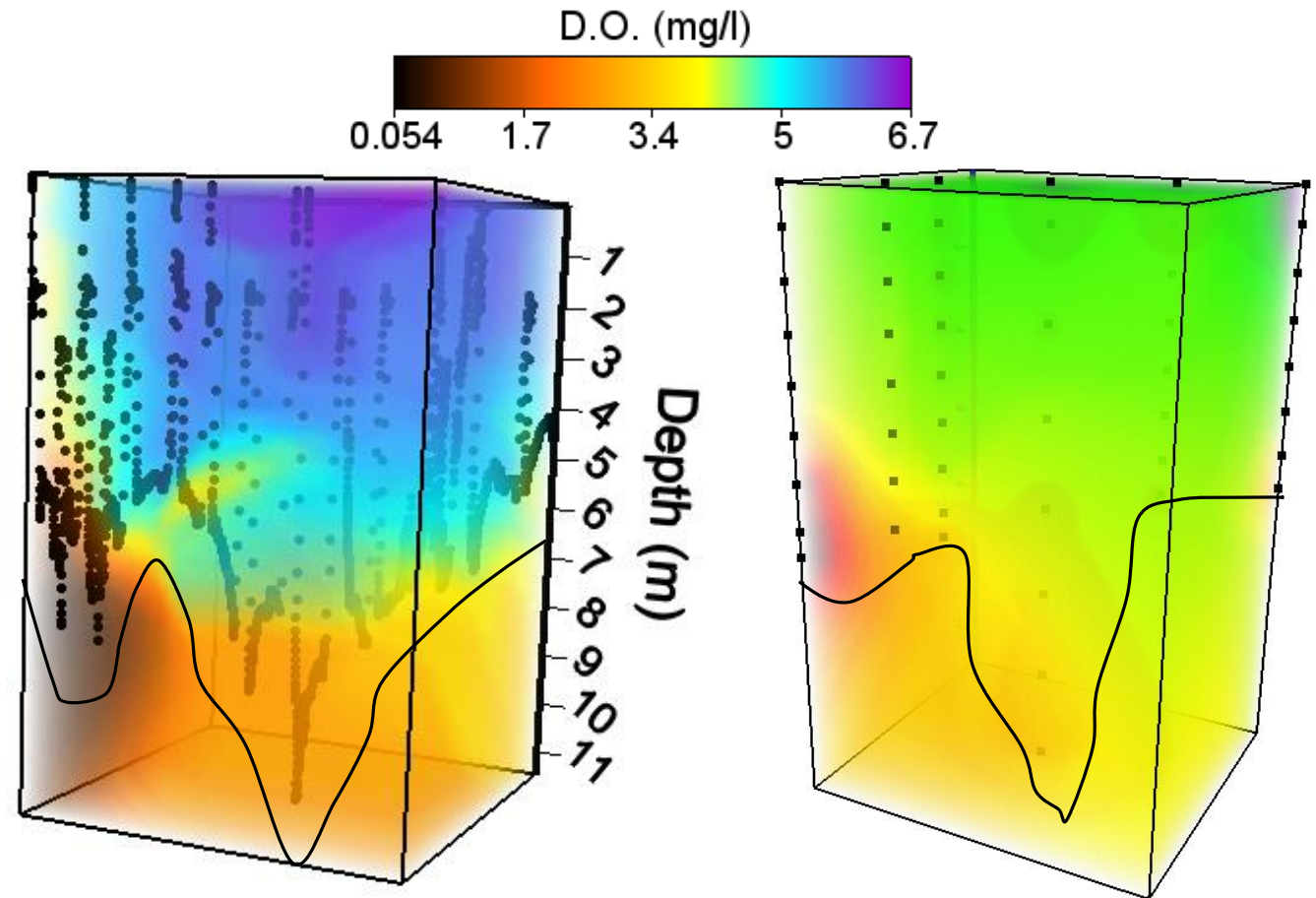
- Supplement CBP monitoring
- Watershed “hot spots”
- Target smaller tidal tribs
- New Citizen’s monitoring project

# Innovation



**REMUS 100**  
**Autonomous Underwater Vehicle**

*Credit: UC Santa Barbara*



REMUS 100 AUV (6-8 AM)

*Credit: U.S. Naval Academy*

Severn River Keeper weekly  
monitoring (8 AM – 2 PM)

- Improved interpretation of the monitoring information
  - Efficiencies in monitoring



# Innovation



**REMUS 100**  
**Autonomous Underwater Vehicle**

*Credit: UC Santa Barbara*

- Distinct source sectors
- Tidal network design
- More frequent measurements
  - Loads
  - Standards attainment
- Refine networks

# Partnerships



*Credit: Social Media Examiner*

“Partnering ...each partner benefits by co-locating monitoring efforts and the overall cost of the monitoring effort is reduced”

- Local jurisdictions
- Enhance coordination with regional partners
- Build upon existing infrastructure

# Combining Funds

“Having agencies contribute funding into a common pool of resources provides opportunities for efficiencies and integration of priorities.”

- MD Water Monitoring Council
- Public-private opportunities
- Pooled CBP monitoring



*Credit: Global Humanitarian Assistance*



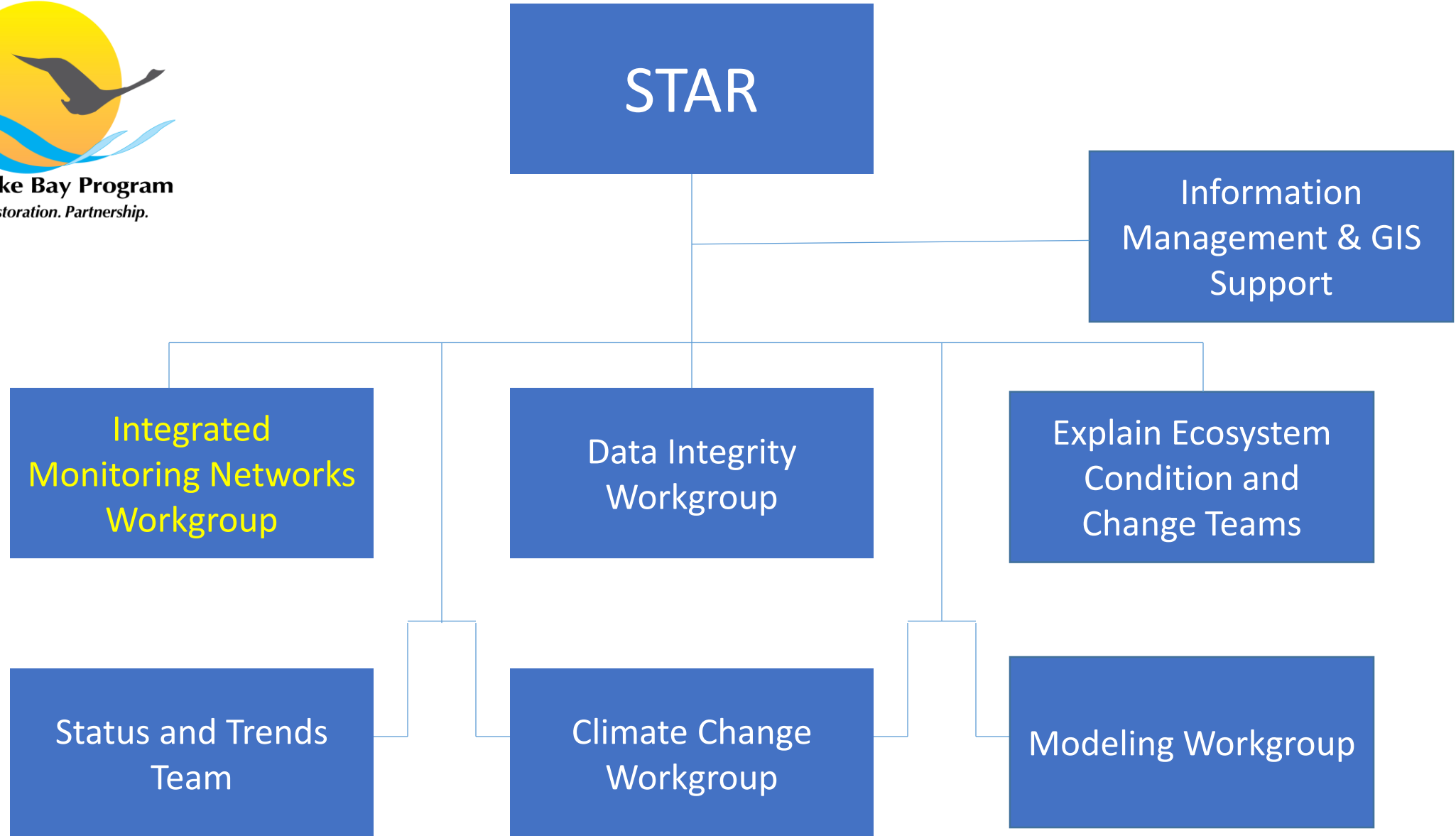
# Leadership



*Credit: Kuder, Inc.*

“It is essential to have a network of peers to share and discover successes and challenges when operating monitoring programs.”

- Think beyond own programs
- Interact with Global partners
- Emphasize and build integrated networks



# Next steps and help from WQ Goal Team

- Technical review of report
- Summer release
- Implement recommendations
  - User council
  - Prioritize recommendations
  - Partner on network enhancements
- Phase III: Watershed Agreement

Contacts: Lea Rubin and Peter Tango, STAR