



Stream Health



Alison Santoro
MD Dept. of Natural Resources
Co-Chair, SHWG

Through the Chesapeake Bay Watershed Agreement, the Chesapeake Bay Program has committed to...



Goal: *Stream Health*

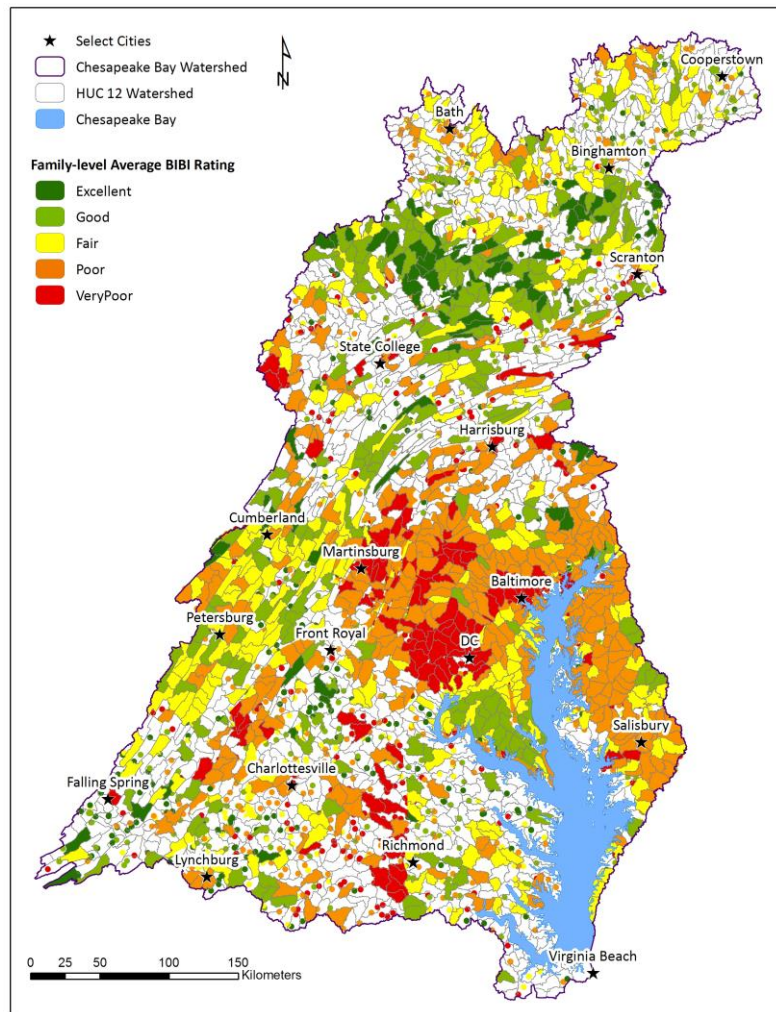
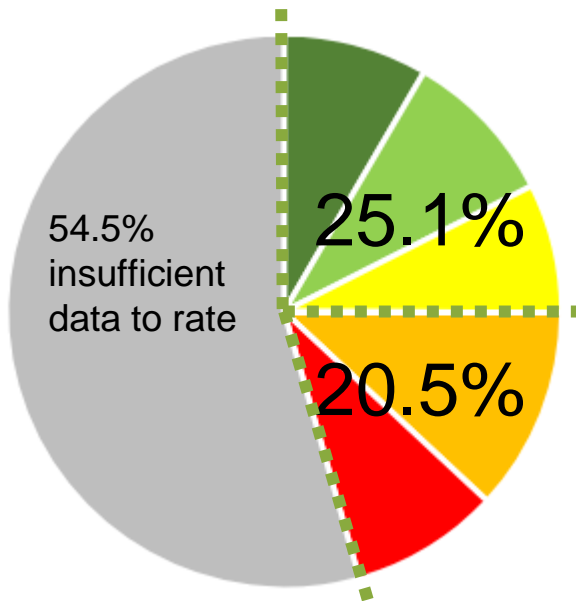
Outcome:

Continually improve stream health and function through the watershed. Improve health and function of ten percent of stream miles above the 2008 baseline for the watershed



What is our Expected and Actual Progress?

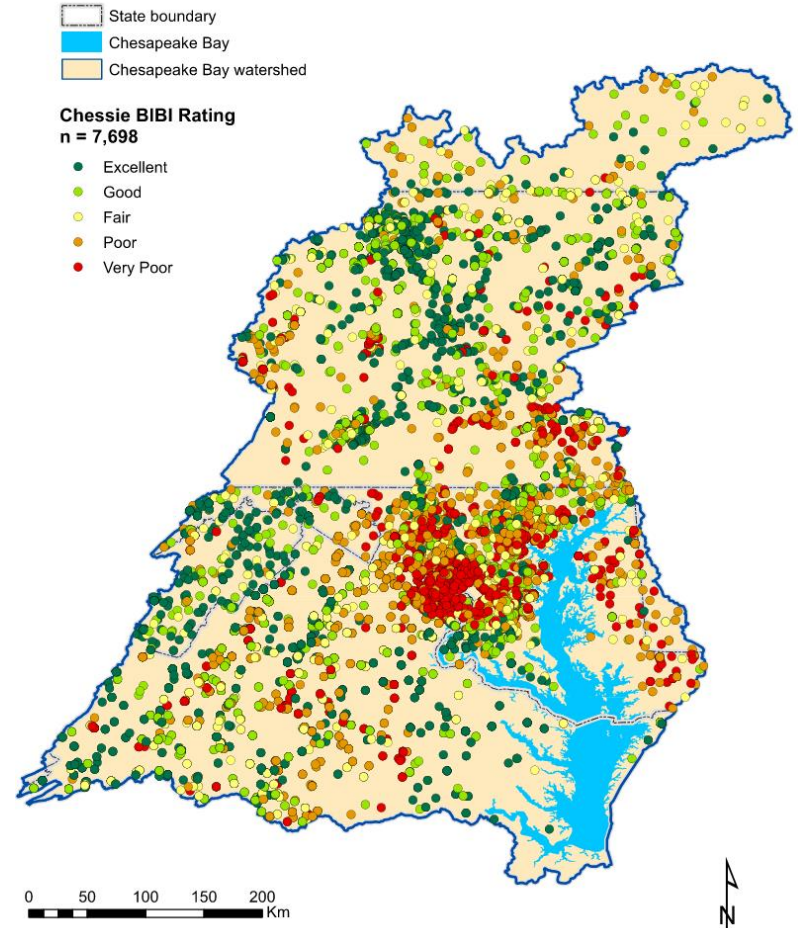
2006-2011 (Baseline)

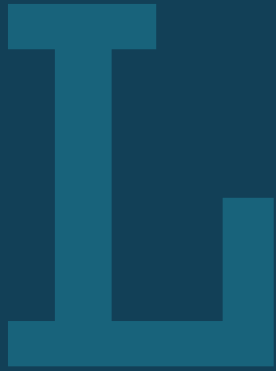




What is our Expected and Actual Progress?

2012-2019 (update, in progress to summarize rating by catchment and stream miles)





Learn

What have we learned in the last two years?



Successes and Challenges

Progress made when:

- Engaged membership
- Meaningful, action-oriented discussions
- Dedicated resources (funding, personnel) to advance workplan
- Collaboration with other GITs/Work Groups (Healthy Watersheds GIT)

Challenges with inconsistent or absent participation from State representatives

- Conducting survey to identify barriers to participation



On the Horizon

There are several developments underway that may influence our work:

Scientific

- Partners' studies exploring the effects of climate change on freshwater streams

Fiscal

- Determine future role/responsibility/funding for future BIBI updates

Policy

- Development of a temperature TMDL (Maryland)
- Continued work to develop additional metrics to measure progress in improving stream health

With the exception of impacts to our fiscal resources, these developments should help to fill in gaps in knowledge of stressors affecting stream health. Filling in these gaps will help to inform our development of additional stream health metrics

A large, stylized, blue letter 'A' is centered on a dark blue background. The letter has a thick, blocky font with a slight shadow effect. The background is divided into horizontal bands of color: a dark blue band at the top, a medium blue band in the middle, and a light green band at the bottom.

Adapt

How does all of this impact our work?



Based on what we learned, we plan to ...

- Help advance Stream Health actions more fully
- Work with other GITs/Workgroups to implement Logic and Action Plan
- Identify scientific partner to update stream health metric, otherwise will not significantly impact our work plan priorities



Help

*How can the Management Board
lead the Program to adapt?*



How You Can Help



- Currently on track with majority of work plan
 - Chessie BIBI updates
 - Additional metrics
 - Pooled Monitoring
 - USGS stressor study
- CBP-funded studies are critical to advancing work plan goals
- Implement Phase 2 of Stressor study



Help Needed

- Identification and support for scientific provider to continue updates to Chessie BIBI
- The workgroup has been able to secure CBP funding to implement a key priority action of identifying stressors and BMPs impacting stream health
- Sustaining funding through the remaining phases will be critical to achieving this action
- Continued support from the Management Board to support membership and GIT-based funding



Discussion