



Fish Passage



*Mary Andrews
NOAA Restoration Center
Fish Passage Chair*

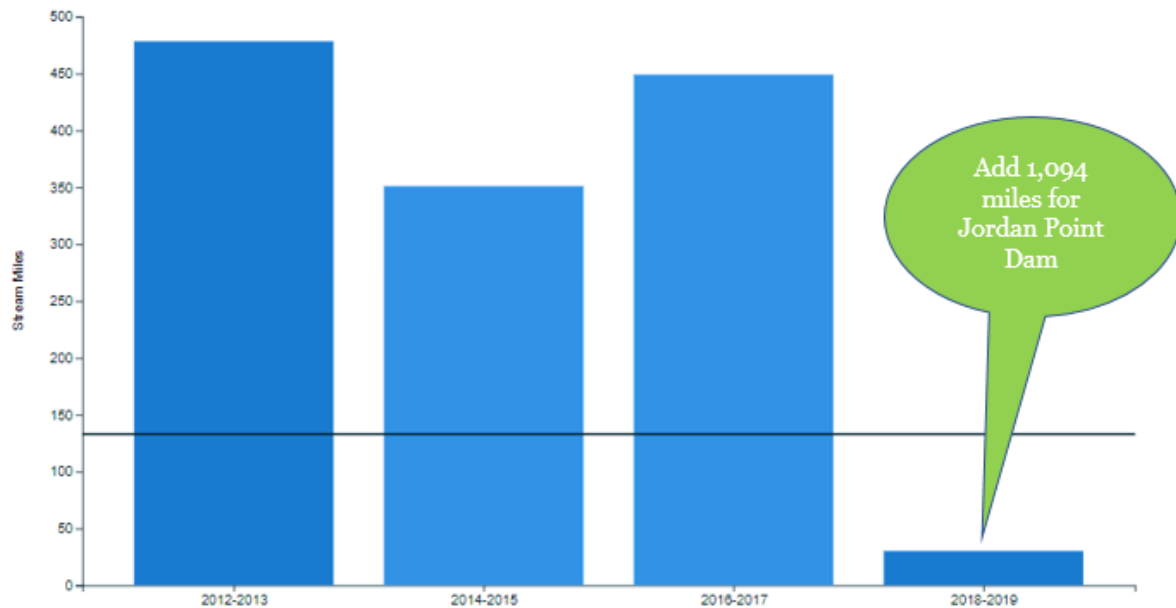
Goal: Continually increase access to habitat to support sustainable migratory fish populations...

Outcome: By 2025, restore historical fish migration routes by opening an additional 132 miles every two years to fish passage. Restoration success will be indicated by the consistent presence of alewife, blueback herring, American shad, hickory shad, American eel and brook trout, to be monitored in accordance with available agency resources and collaboratively developed methods.



What is our Progress?

[VIEW CHART](#) [VIEW TABLE](#)

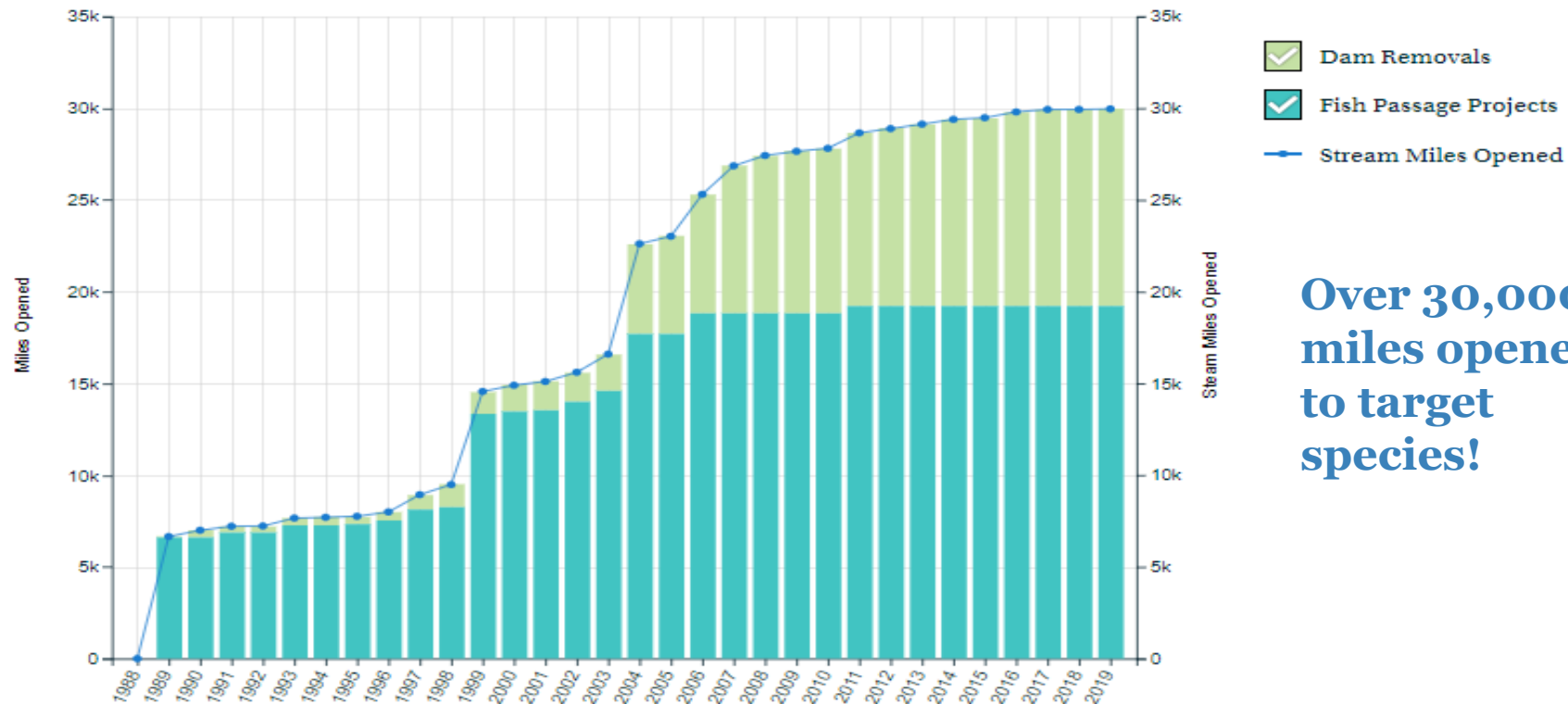


Stream Miles Opened 1988-2019 (Cumulative) [↗](#)

Stream Miles Opened to Fish Passage via Dam Removals and Fish Passage Projects.

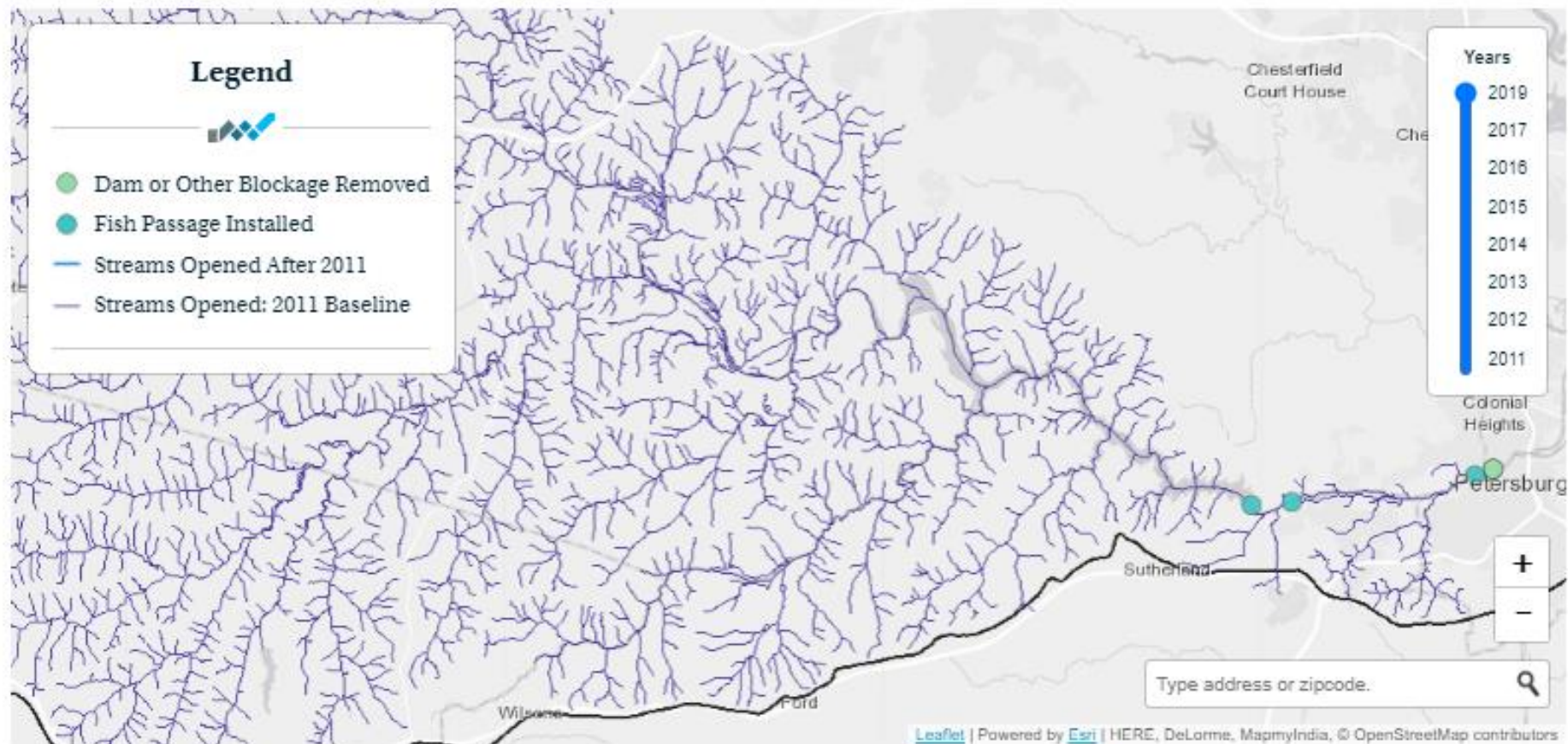
[VIEW CHART](#)

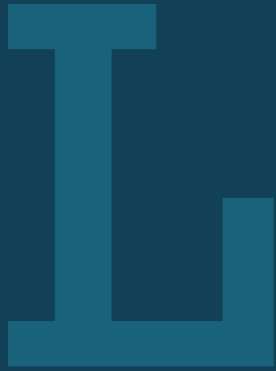
[VIEW TABLE](#)



**Over 30,000
miles opened
to target
species!**

Streams Opened to Fish Passage (1989-2019)





Learn

What have we learned in the last two years?



Successes and Challenges



- Fish Passage ➡ Dam Removal/Culverts
- Interest by dam owners is still a major challenge.
- Workgroup focused on ways to incentivize dam removal projects.
- Developed “Recommendations for Aquatic Organism Passage at Maryland Road-Stream Crossings (2021)” with funding by the habitat GIT.



On the Horizon



- Dams and culverts are infrastructure! Legislation in the works to address aging structures ???
- Incentive Programs – dam removal mitigation calculator; coordination with dam safety programs

A large, stylized, blue letter 'A' is centered on a dark blue background. The letter has a thick, blocky font with a slight shadow effect. The background is divided into horizontal bands of color: a dark blue band at the top, a medium blue band in the middle, and a light green band at the bottom.

Adapt

How does all of this impact our work?



Based on what we learned, we plan to ...

- Use infrastructure funding to expand the dam removal and culvert initiatives while addressing climate change
- Work more with county and local governments on to road-stream crossings
- Expand the network of partners to accomplish more projects





Help

*How can the Management Board
lead the Program to adapt?*



Help Needed





Discussion