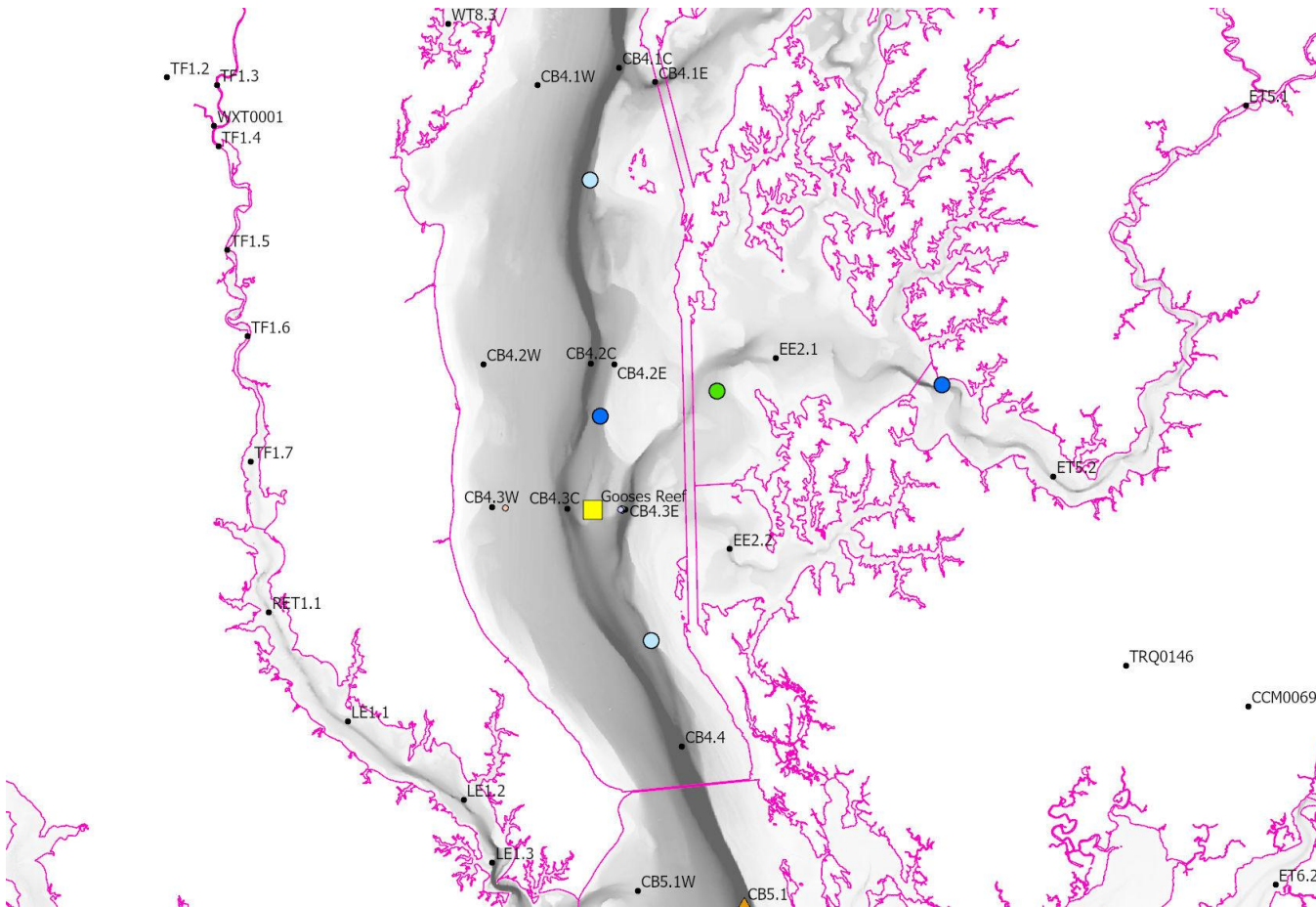


2024 Water Column Monitoring Deployment Plan

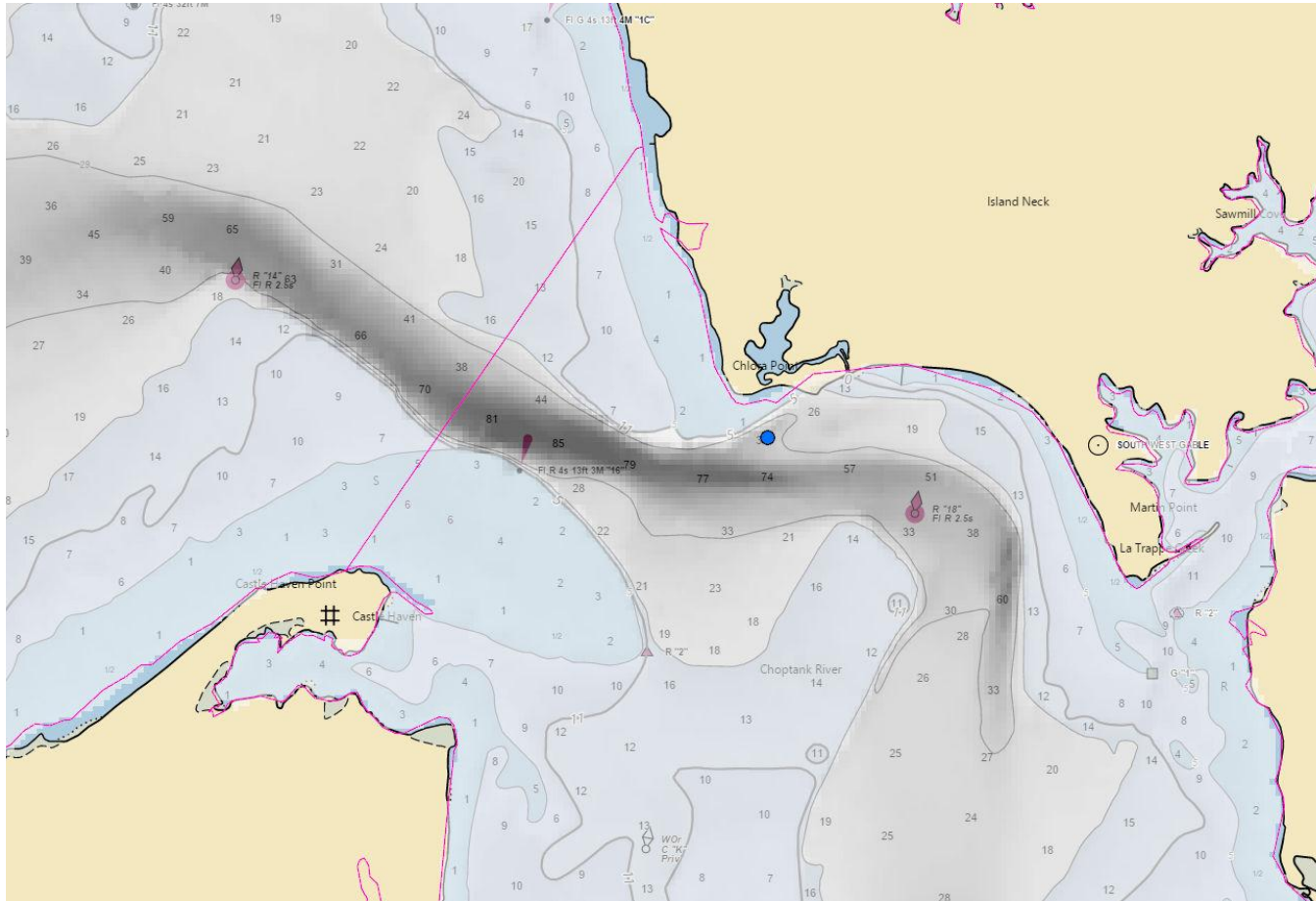
Choptank River Region

Choptank River Region



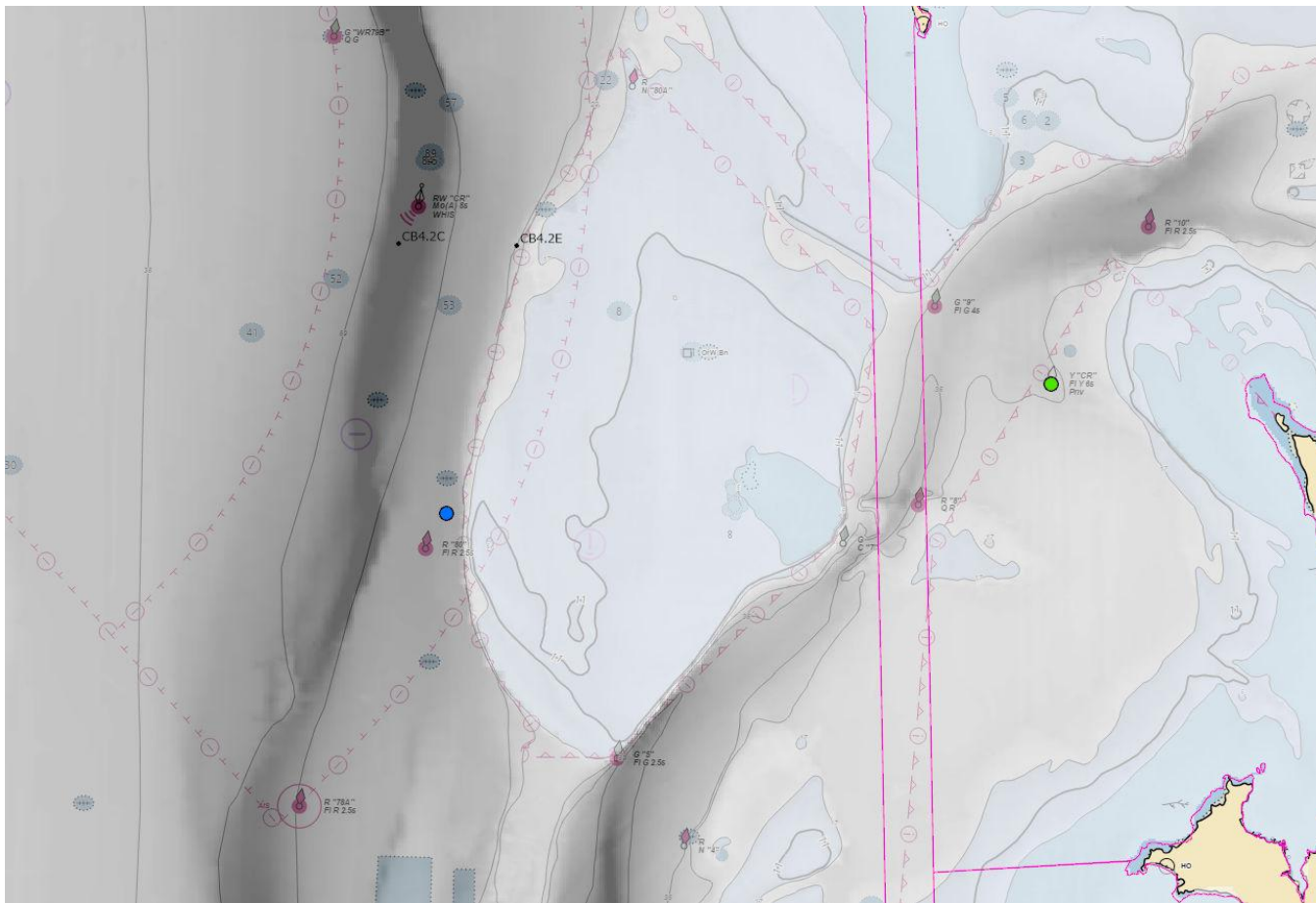
- Reoccupy Lower Choptank (green)
 - consistency
- Add Upriver Station
 - Adds another segment
 - Data interpolation across segment (EE2.1)
 - Direct Living Resource connection
- Add Main Bay Station
 - Adds another segment (CB4)
 - Near 3 station model location

Upper Choptank River Detail



- Choptank (upper)
 - Deep-ish (10m)
 - Safe-ish
 - Narrow passage
 - Telemetry addition
 - Different segment

Main Bay/Lower Choptank Detail



- Mainstem (blue)
 - Deeper (19m)
 - Safe-ish
 - Telemetry addition
 - Different segment
- Lower Choptank 2023 (green)
 - Depth (8m)
 - We maintained a 9 month deployment
 - Currently out of the water

Potomac River Region

Potomac River Region



- Reoccupy Lower Potomac (dk green)
 - consistency
- Add 2nd Upriver Station (lt green)
 - Limited by distance (operational constraint)
 - Prioritize importance (St Clements Is vs LE2.2)
- Add 3rd Station
 - Stay in main river?
 - Seek tributary connection?
 - VA side of the river?

Lower Potomac River Detail

