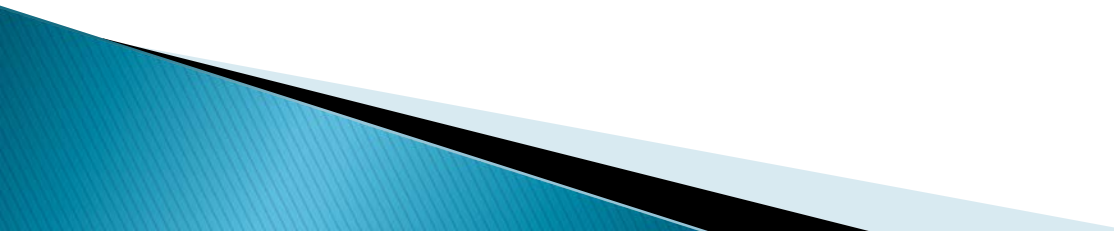
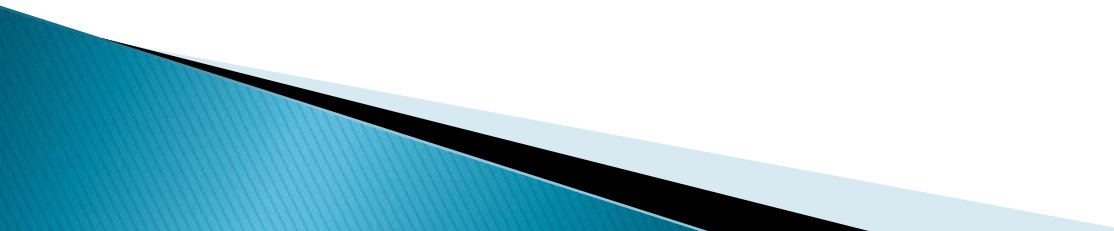


# Sustainable Schools

After this session, you will be able to:

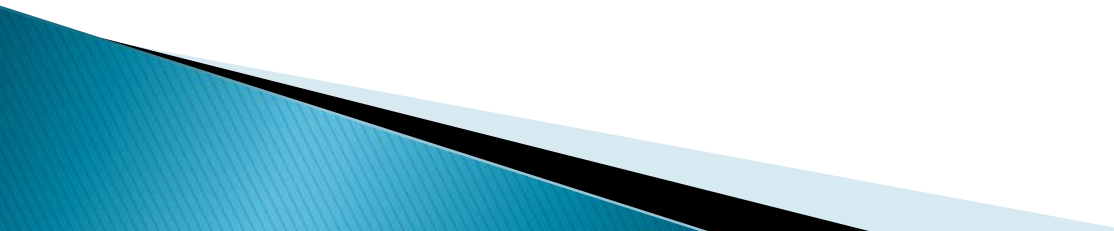
- ▶ identify the elements of a green, healthy, sustainable school, and,
  - ▶ identify models from states and districts who have created plans or policies for the elements of a green, healthy, and sustainable school.
- 

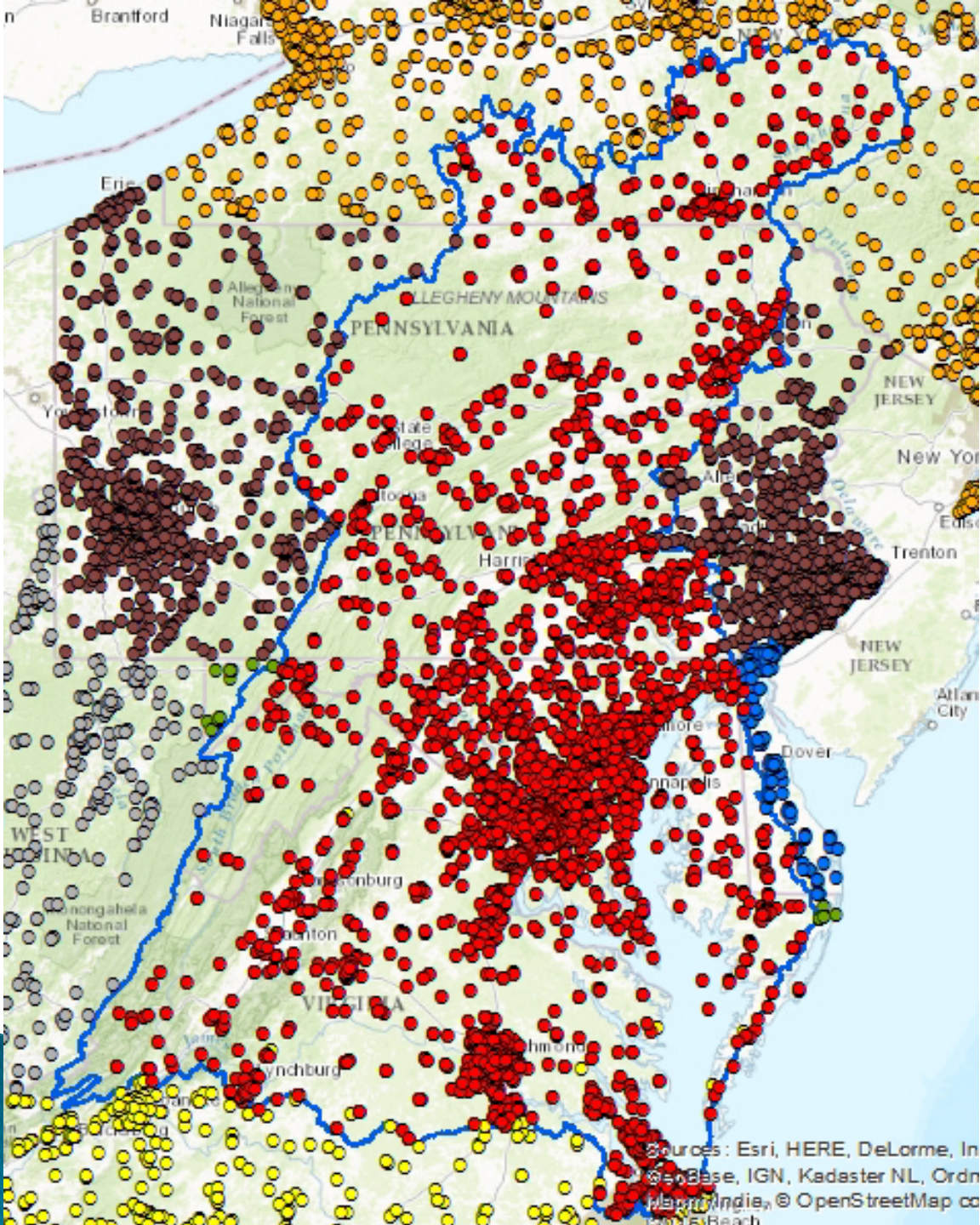
# Questions we'll explore

- ▶ What makes a schools sustainable?
  - ▶ What are benefits of sustainable schools?
  - ▶ What does implementation look like?
  - ▶ What are national and local models?
- 

# Sustainable Schools Outcome

**Sustainable Schools:** *Continually increase the number of schools in the region that reduce the impact of their buildings and grounds on their local watershed, environment and human health through best practices, including student-led protection and restoration projects.*





4,300 public and  
charter schools

Over 3 million  
students

Tens of thousands of  
buildings and acres

**What does school  
sustainability look like?**





Butterfield Elementary, Libertyville, IL

## Green Energy

Yelm High School, Yelm, WA

## Stormwater management





## Student Composting

Arcadia Center for Sustainable Food and Agriculture–  
Alexandria VA

Chicago Public Schools

Farm to school and  
schoolyard gardens







## Wildlife habitat

USFWS Schoolyard Habitat Program  
in Connecticut

Tree to School: Planting Heritage Fruit Orchards in  
Southwest Colorado

## Reforestation







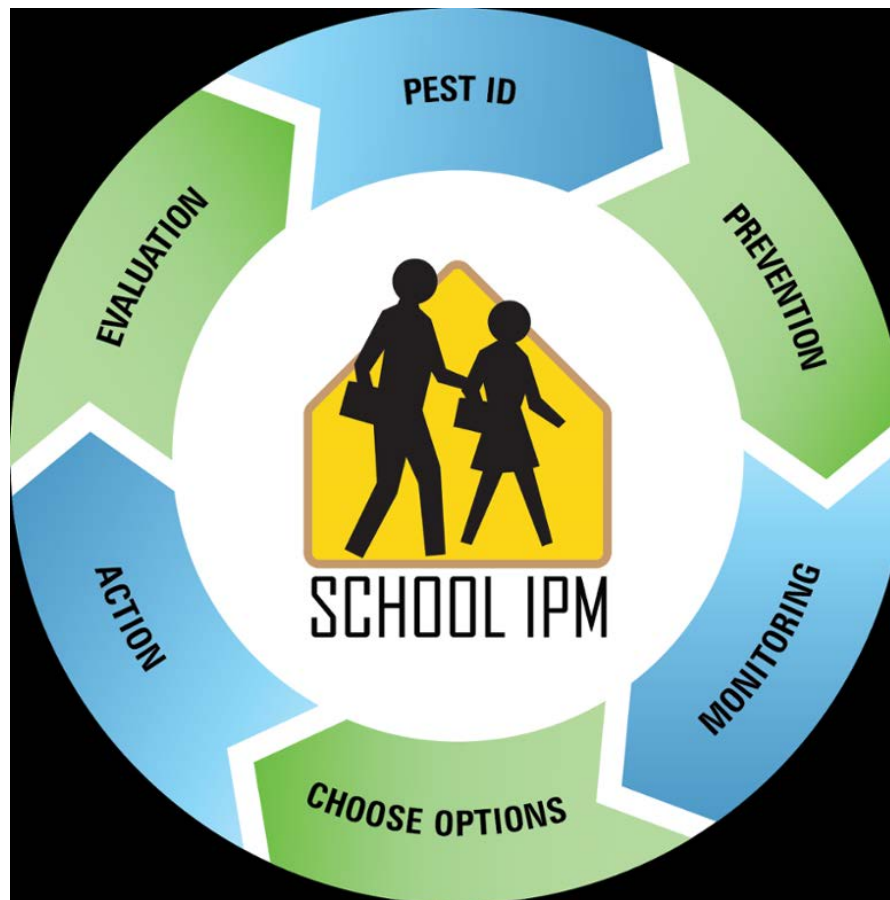
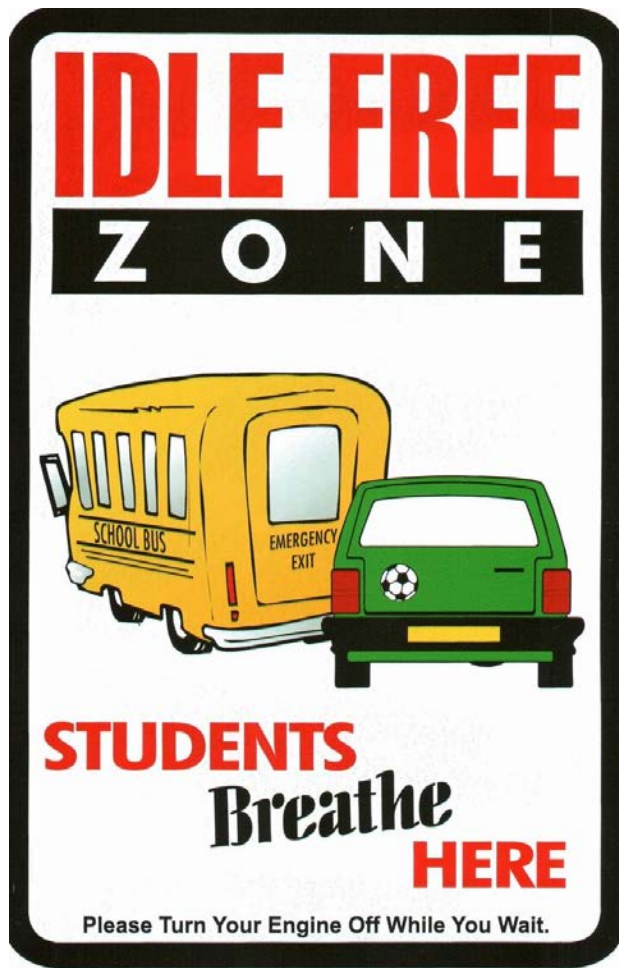
St. Paul Elementary School's Outdoor Classroom,  
Beaconsfield, QC

## Outdoor Learning Spaces

NatureBridge Lab in CA

## Environmental Literacy





Steps to School IPM Program, Univ. of WY





# What's a *Sustainable* School?

School building, grounds, and operations reduce environmental impact and costs

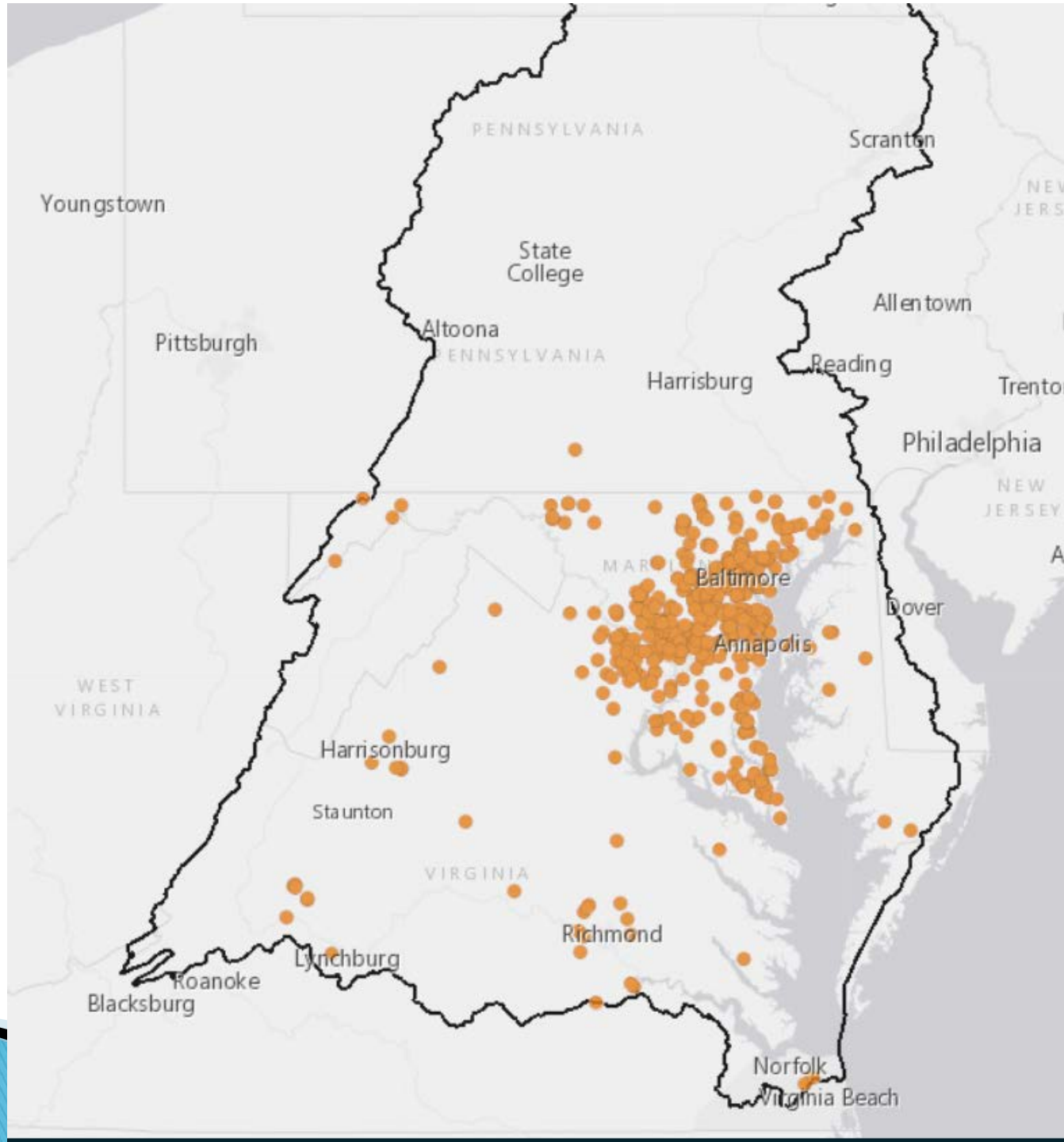
Improves the health and wellness of students, staff, and the surrounding community

Provides environmental education to all students











<b>Work Plan</b>					
<b>Goal:</b>	Enable every student in the region to graduate with the knowledge and skills to act responsibly to protect and				
<b>Outcome:</b>	<b>SUSTAINABLE SCHOOLS</b>				
	Continually increase the number of schools in the region that reduce the impact of their buildings and grounds on				
<b>Long Term Target: TBD</b>	<b>2 year Target: TBD</b>				

<b>Partner Contributions to 2 year target:</b>					
<b>Key Action**</b> <i>Description of work/project. Define each major action step on its own row. Identify specific program that will be used to achieve action.</i>	<b>Performance Target(s)</b> <i>Identify incremental steps to achieve Key Action.</i>	<b>Participating Entity</b> <i>Identify responsible partner for each step.</i>	<b>Geographic Location</b>	<b>Timeline</b> <i>Identify completion date (month &amp; year) for each step)</i>	<b>Factors Influencing and/or Gap</b> <i>Identify related factor or gap in Management Strategy</i>

**Management Approach 1: Promote and strengthen “sustainable school” certification and recognition programs consistent with high-quality, objective, and agreed-upon criteria such as the U.S. Department of Education Green Ribbon School program.**

<b>Key Action</b>	<b>Performance Target(s)</b>	<b>Partner Responsible</b>	<b>Geographic Location</b>	<b>Timeline</b>	<b>Factors Influencing and/or Gap</b>
Promote WV Sustainable Schools using MWEE	Seek funding for systemic support of Chesapeake Bay MWEE that promotes WV Sustainable Schools and USDEd Green Ribbon Schools.	TMI, CI, and EL NGOs	WV Bay Counties	12/31/2017 (ongoing)	Dependent on NGO funding. Limited WVDEP Bay Program funding under Objective #12 "encourage the West Virginia's new Sustainable Schools program to focus on runoff reduction as their USDEd Green Ribbon 'long term sustainability' requirement."
Provide grants to support state-level sustainable schools capacity building efforts	Award grants; Oversee implementation	CBT	Regional	ongoing	
Create an incremental system for recognizing schools to assist them in moving towards Green Ribbon Schools certification	Develop the criteria for each area and identify agency/agencies to spearhead the working groups	OSSE, DOEE, DCEEC, DGS, DCPS, PCSB	DC	Jul-16	
Develop and adopt a framework based on the US Green Ribbon Schools pillars, including relevant federal and state regulations/guidance to inform the development of school system sustainability plans.	Proactively invite and engage a wider variety of experts in developing enhanced guidance on healthy schools practices; Conduct a policy audit of existing regulations that pertain to the environment and could be used to further support sustainable schools practices; Identify models of successful school system, state, and regional sustainability plans, share the information, and encourage replication.	MAEOE, MSDE, MD CIN	MD	Fall 2016 - 2017	
Create an incremental system for recognizing schools to assist them in moving towards Green Ribbon Schools certification	Develop the criteria for each area and identify agency/agencies to spearhead the working groups	OSSE, DOEE, DCEEC, DGS, DCPS, PCSB	DC	Jul-16	