



Looking Back Looking Forward

*Building on 4 decades of
Chesapeake Bay policy making*

Ann Pesiri Swanson
Chesapeake Bay Commission
Executive Director



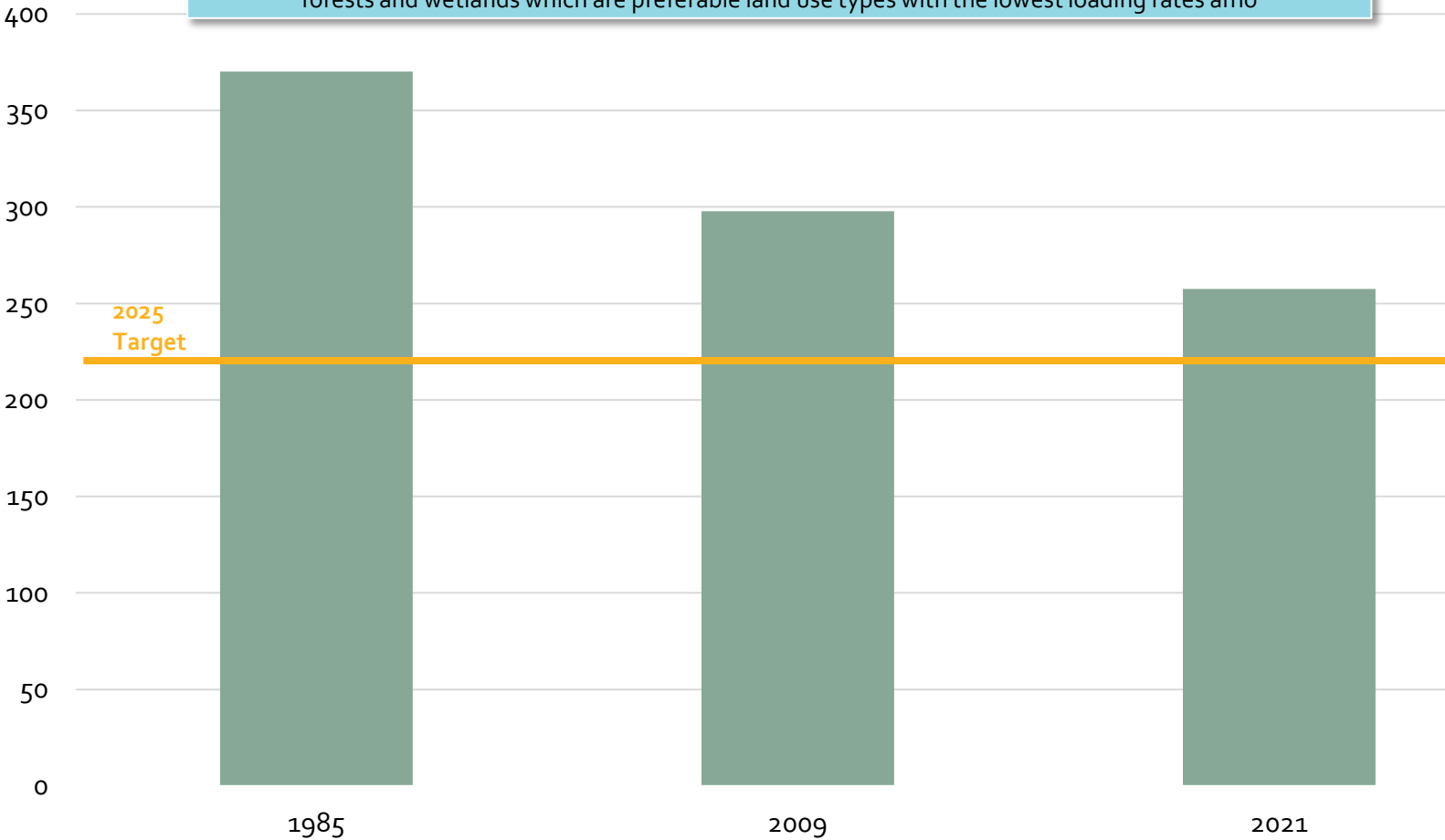
Progress

1980s - 2020

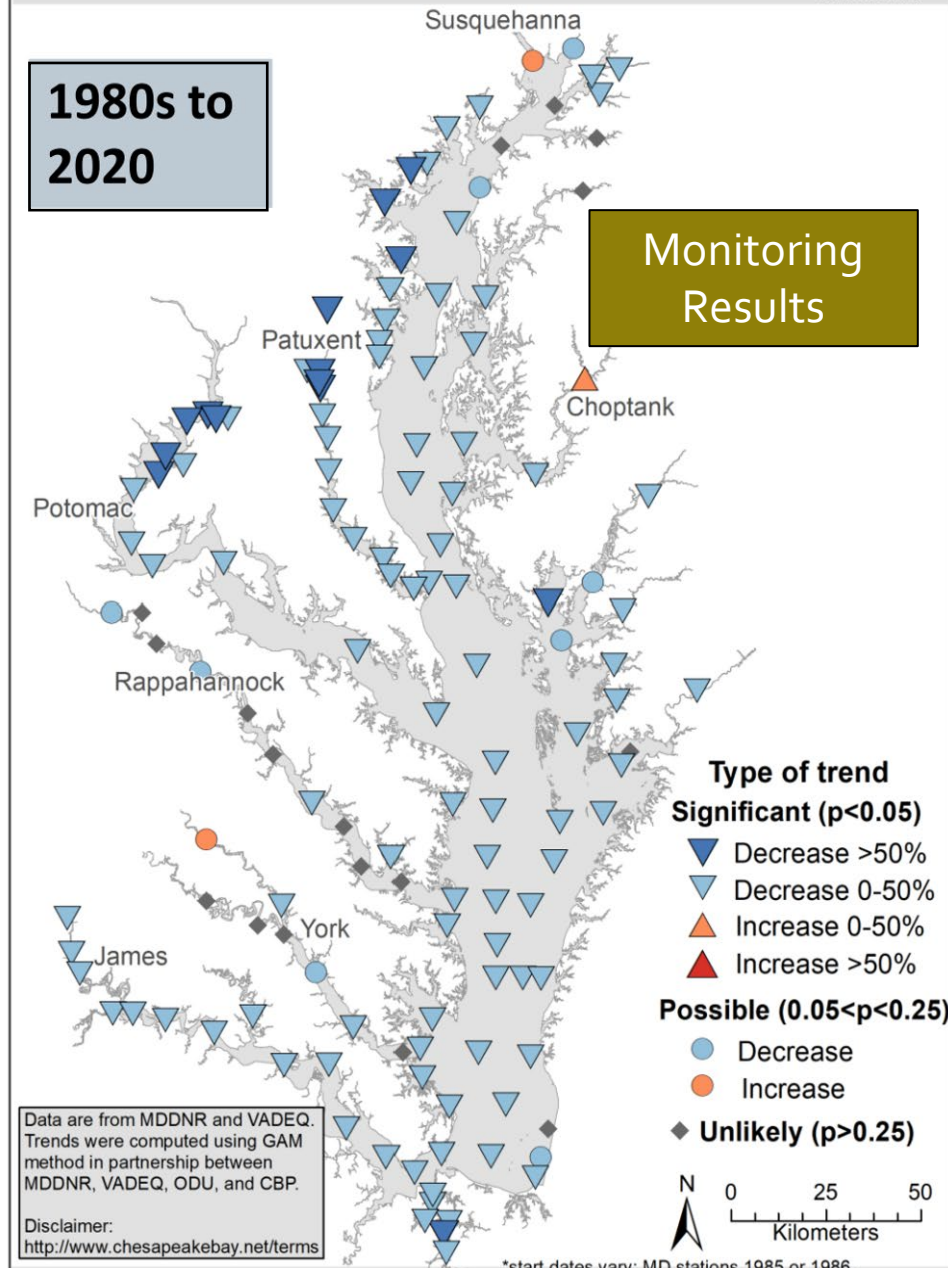
Water Quality is Improving

Modeled Loads to Chesapeake Bay – Nitrogen (M of lbs)

Source: CAST19 and jurisdiction-reported data on wastewater discharges. *The natural sector includes, in part, forests and wetlands which are preferable land use types with the lowest loading rates amo

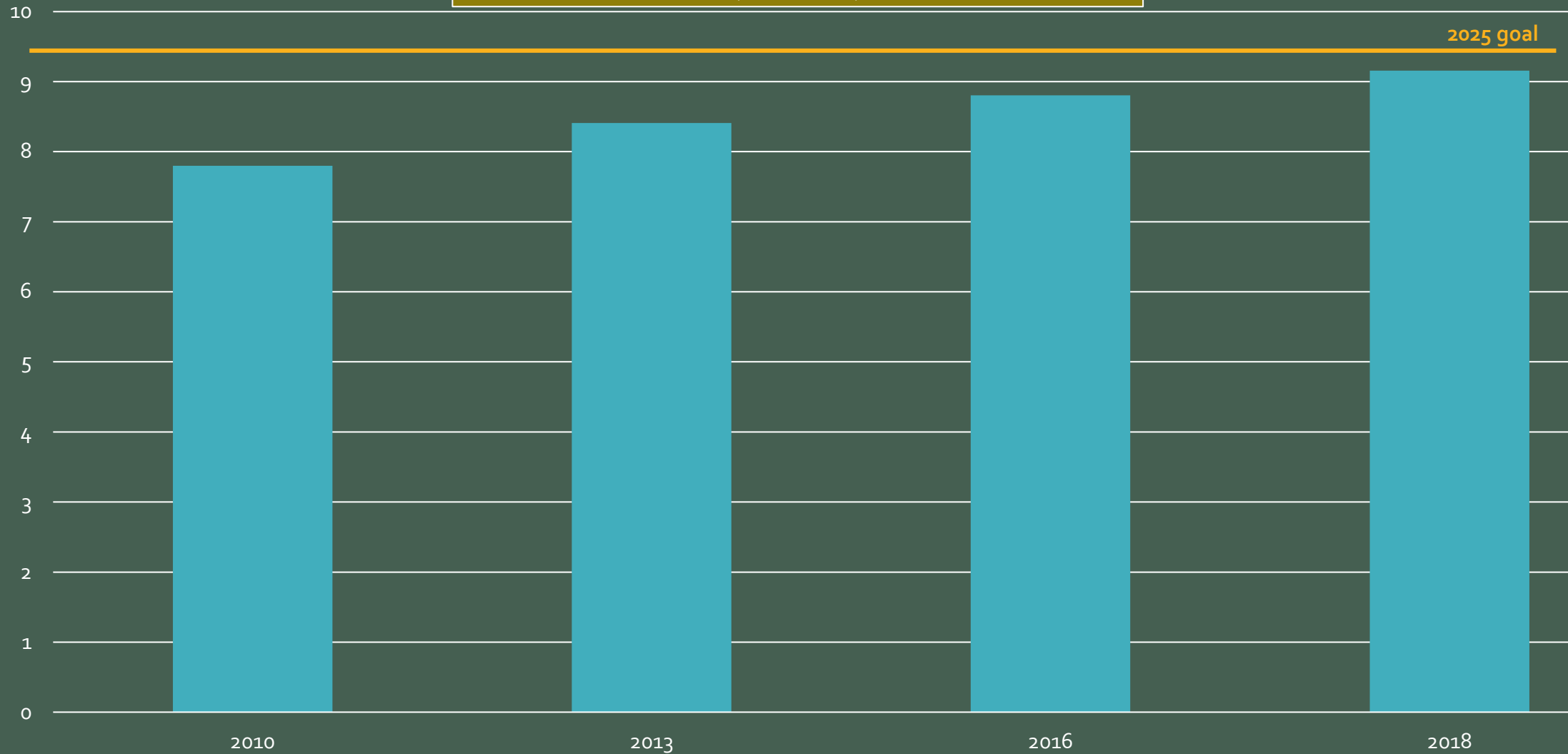


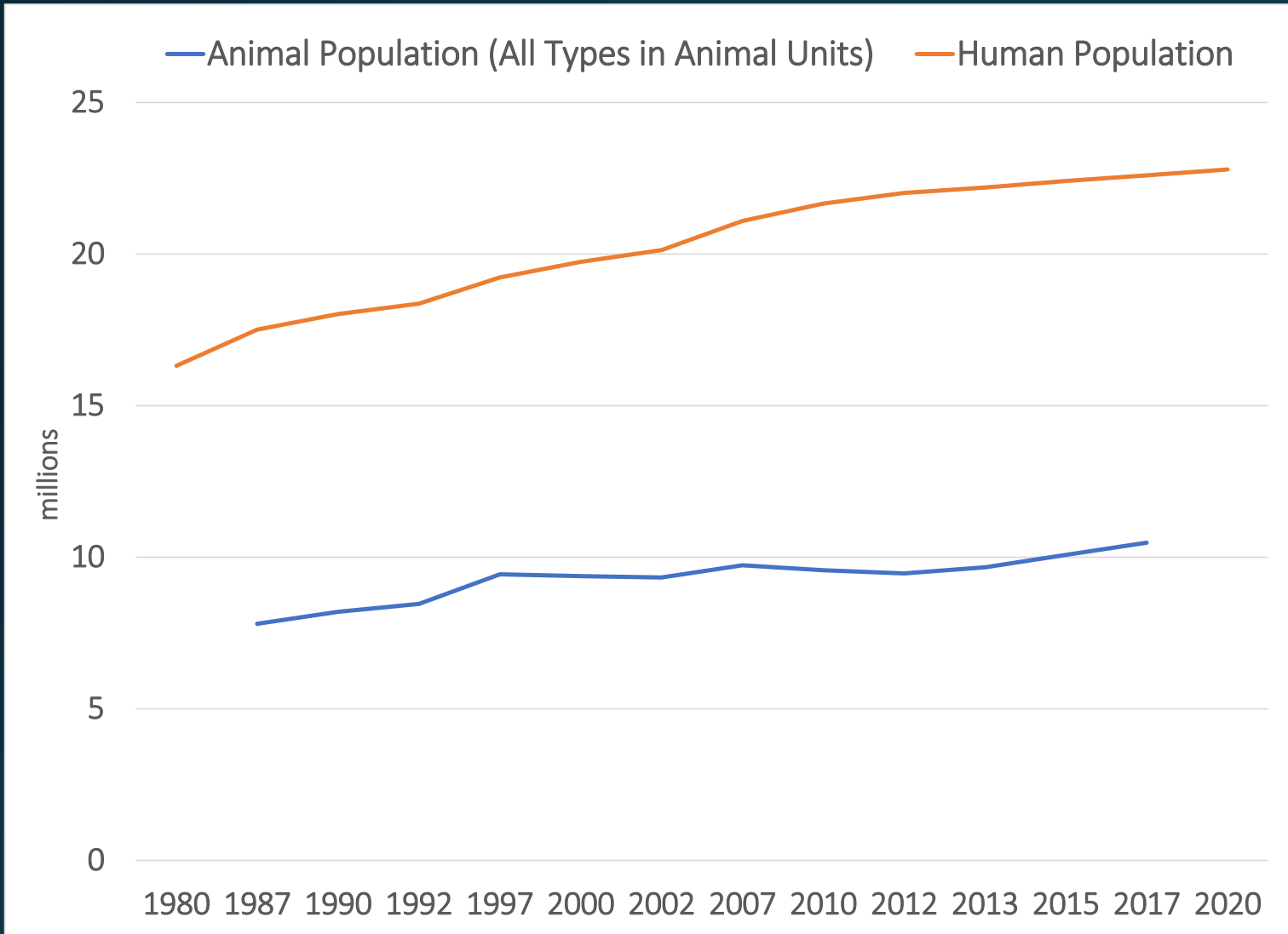
Chesapeake Bay Surface Total Nitrogen: 2020 long-term flow-adjusted change*



Protected Land is at 22%

Protected Lands in the Chesapeake Watershed
(M of acres)





Both
animal and
human
populations
are growing

•
CAST partnership approved data and methods (1985-2020); All counties with a portion in the CB watershed



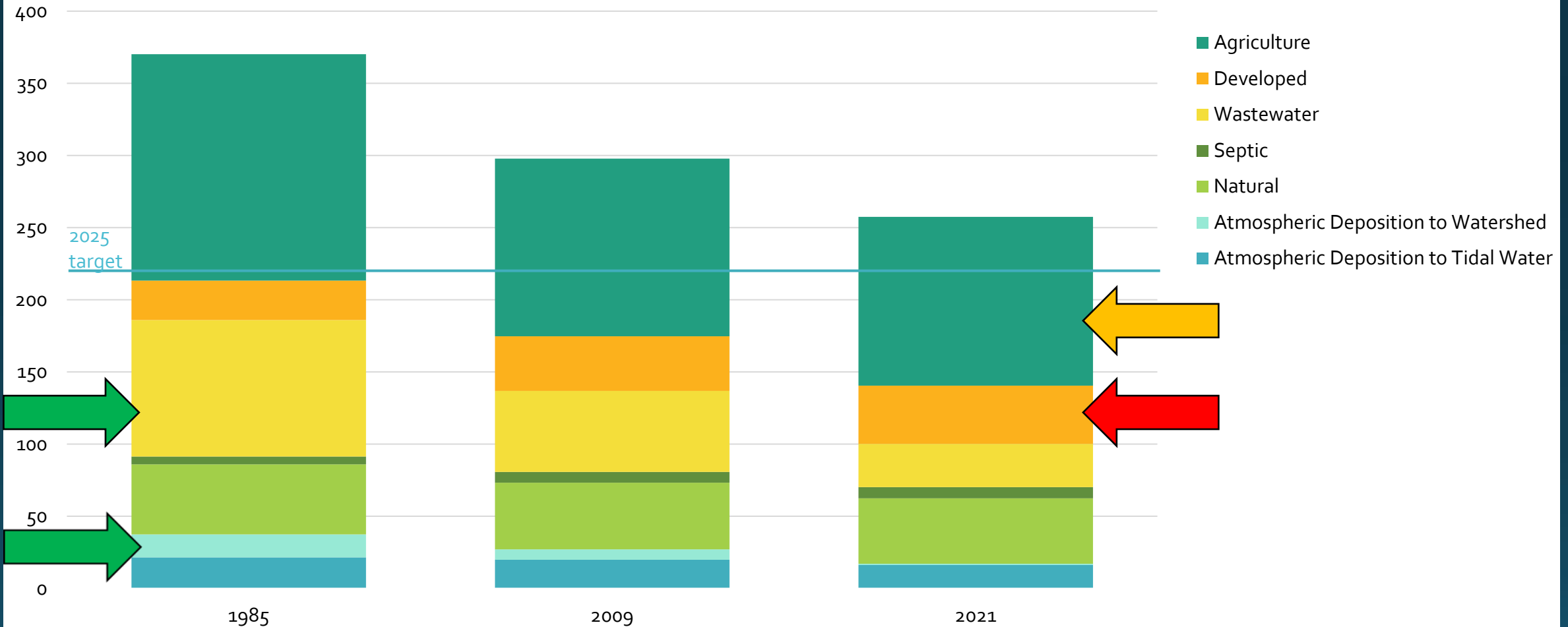
Challenges

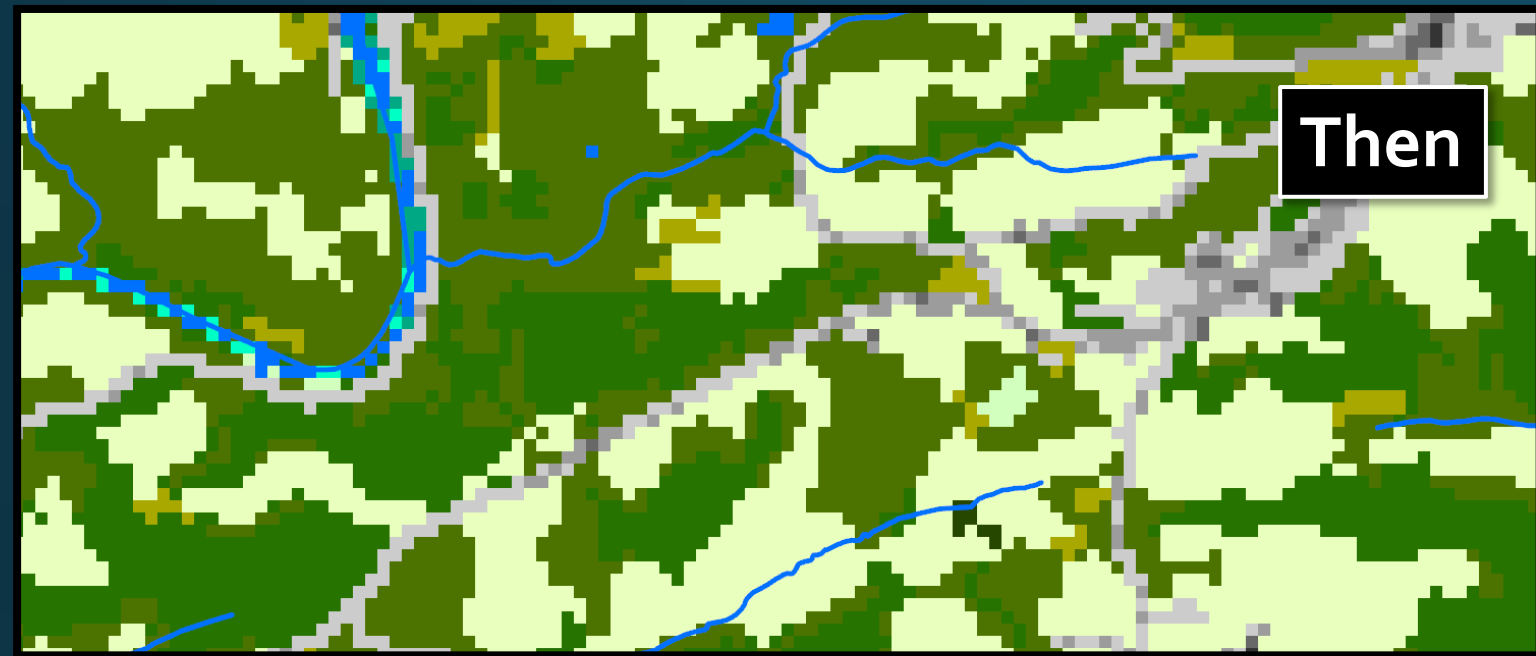
2023 & beyond

1. Keep Going: 42 Million lbs. to go

Modeled Loads to Chesapeake Bay – Nitrogen (M of lbs)

Source: CAST19 and jurisdiction-reported data on wastewater discharges. *The natural sector includes, in part, forests and wetlands which are preferable land use types with the lowest loading rates among





Then



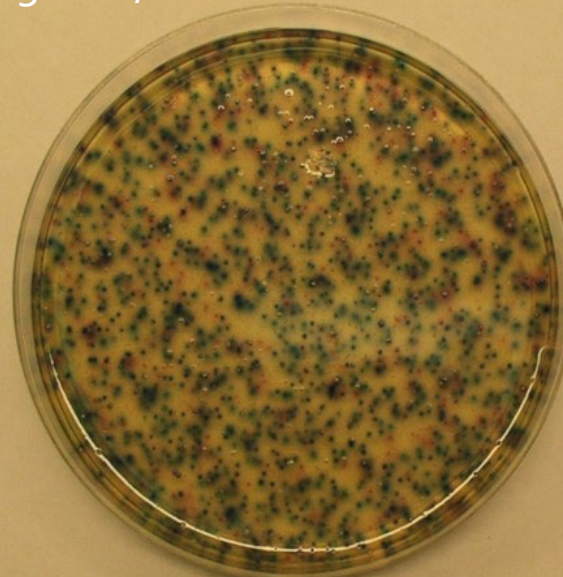
Now

2. Be Strategic:
Target Investments

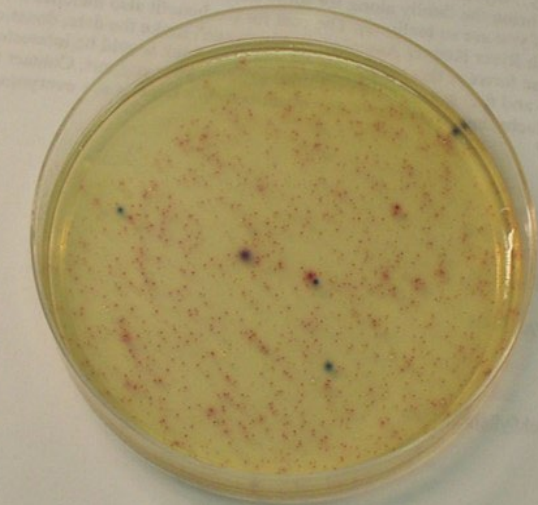
3. Focus on Livestock



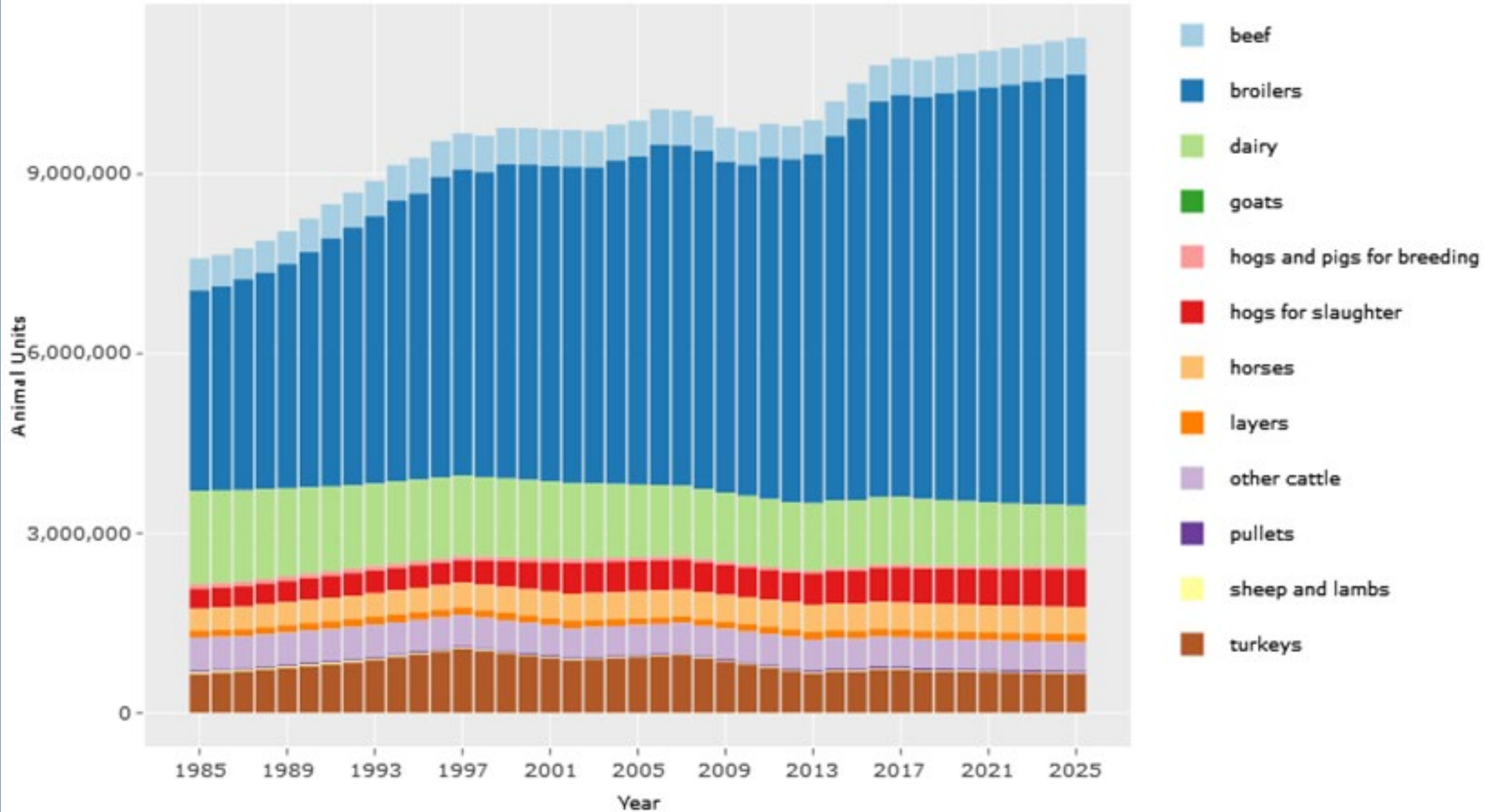
3,850 cfu/100 ml



25 cfu/100 ml

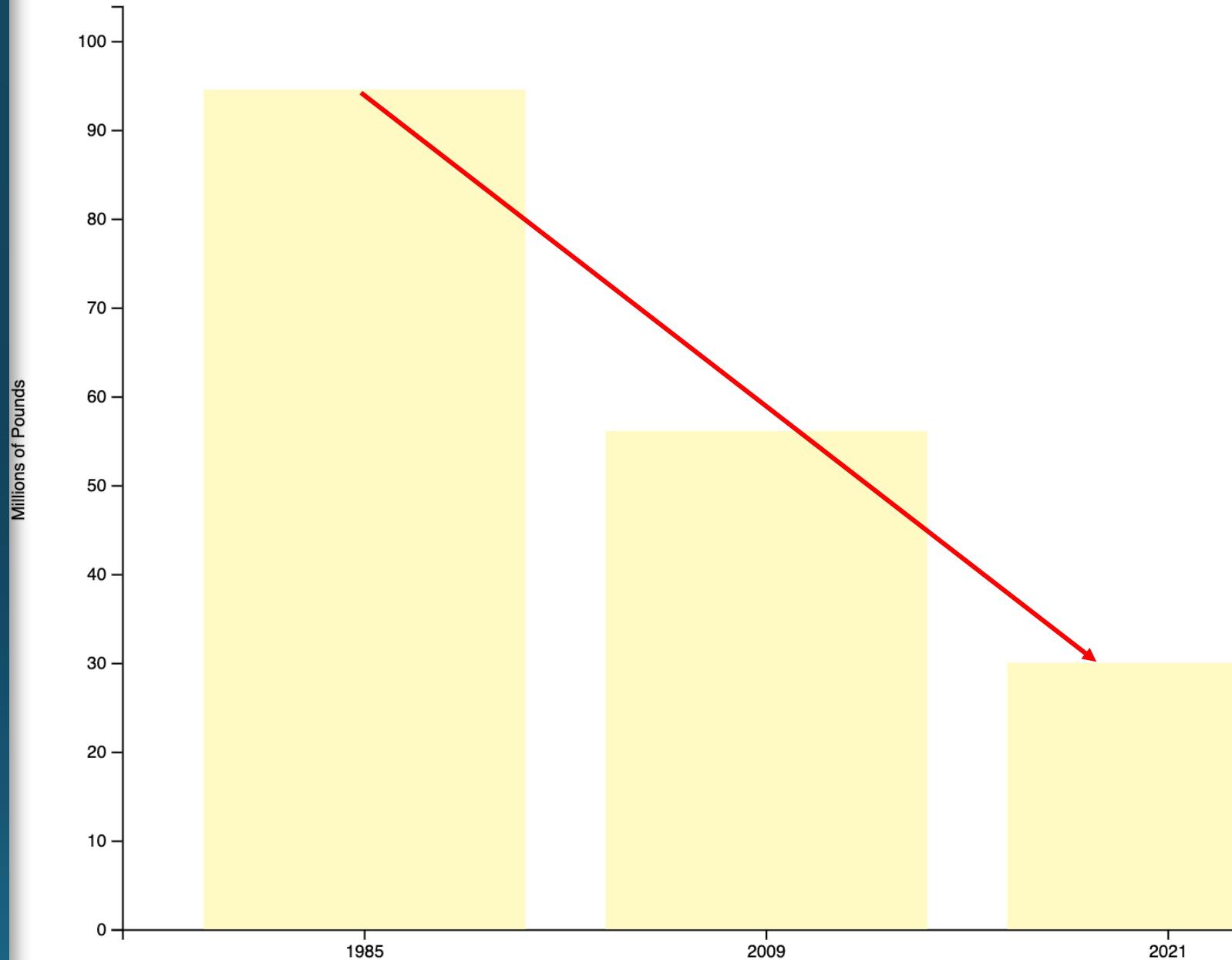


Animal Units by Year and Animal

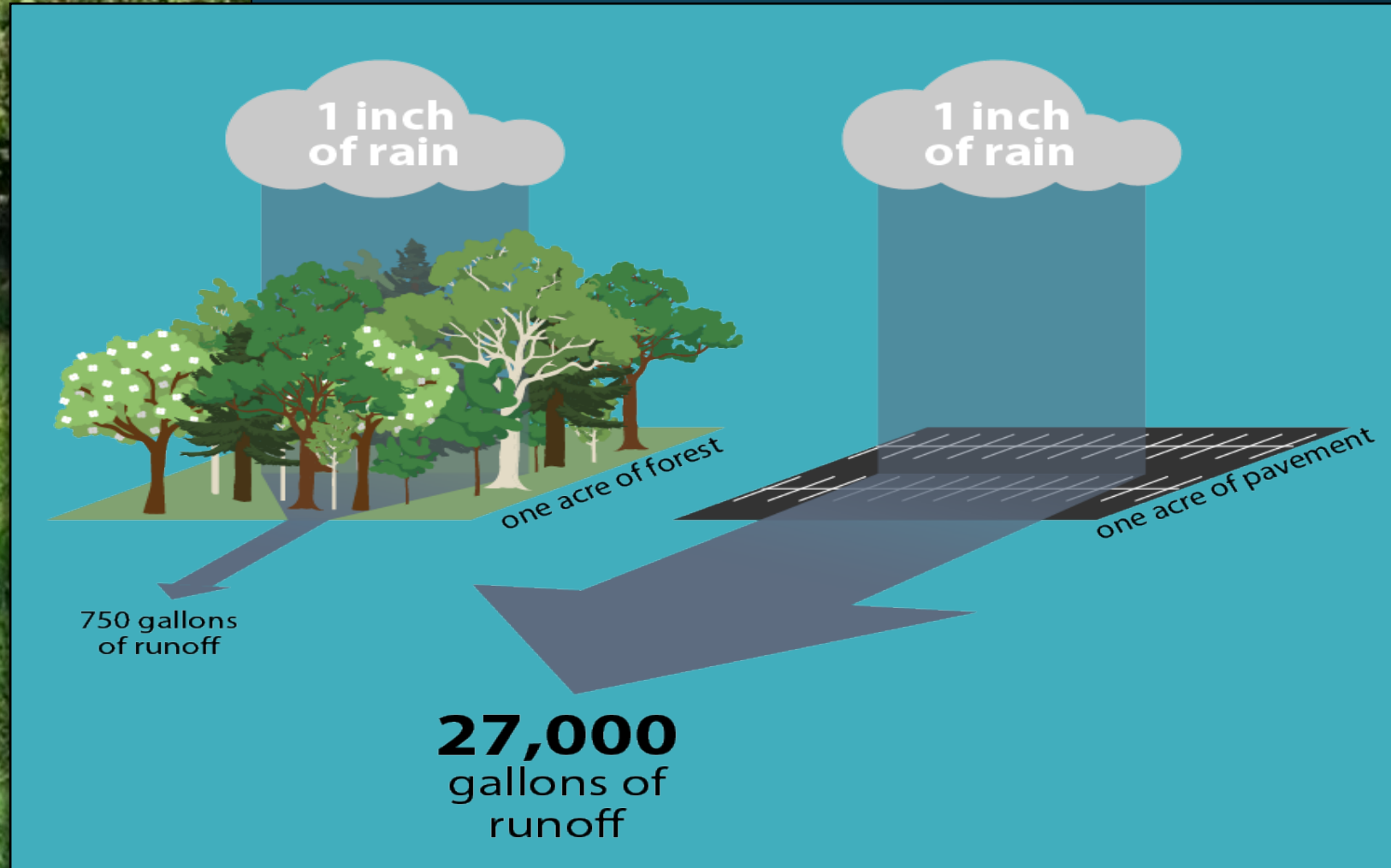


Wastewater is a World-Scale Success Story

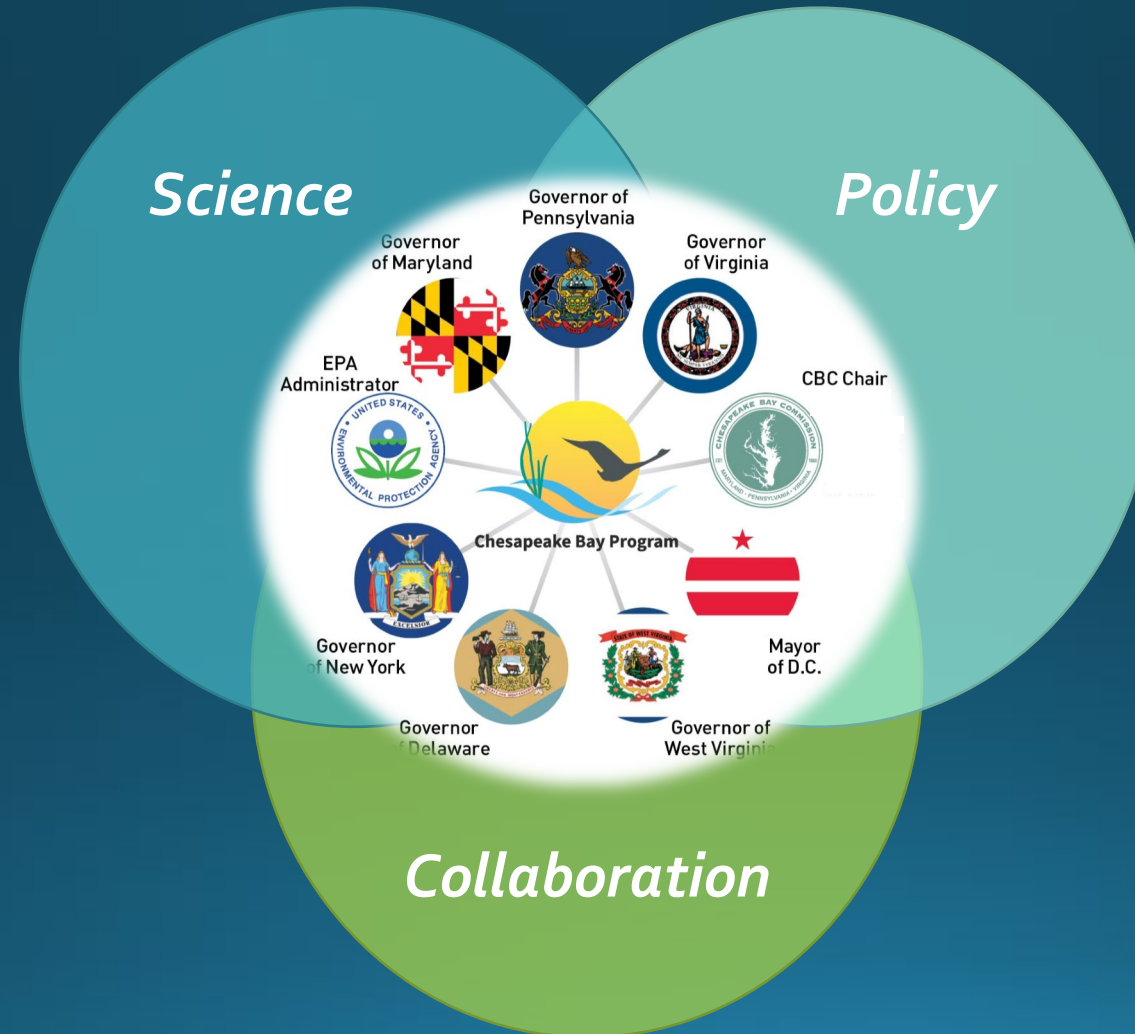
- Strategic Investment
- Innovative Technology
- Regional Approaches
- Technical Assistance
- Federal-State Accountability



4. Protect and Restore the Trees



5. Support the Partnership





Cherish the Partnership

THANK YOU!

Ann Swanson

Chesapeake Bay Commission

aswanson@chesbay.us