



# **GSA's White Oak Campus Stream Restoration Projects Overview**

---

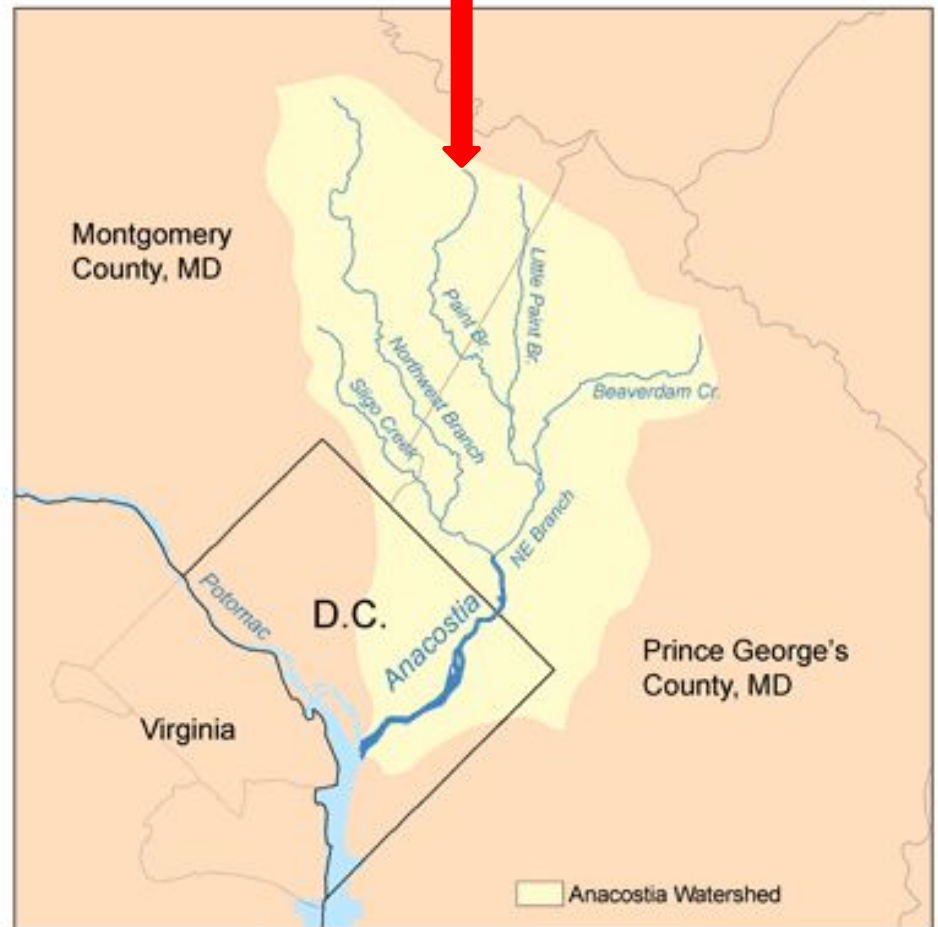
**One Project Done  
...Two to Go**

**Russell Clark  
June 4, 2024**

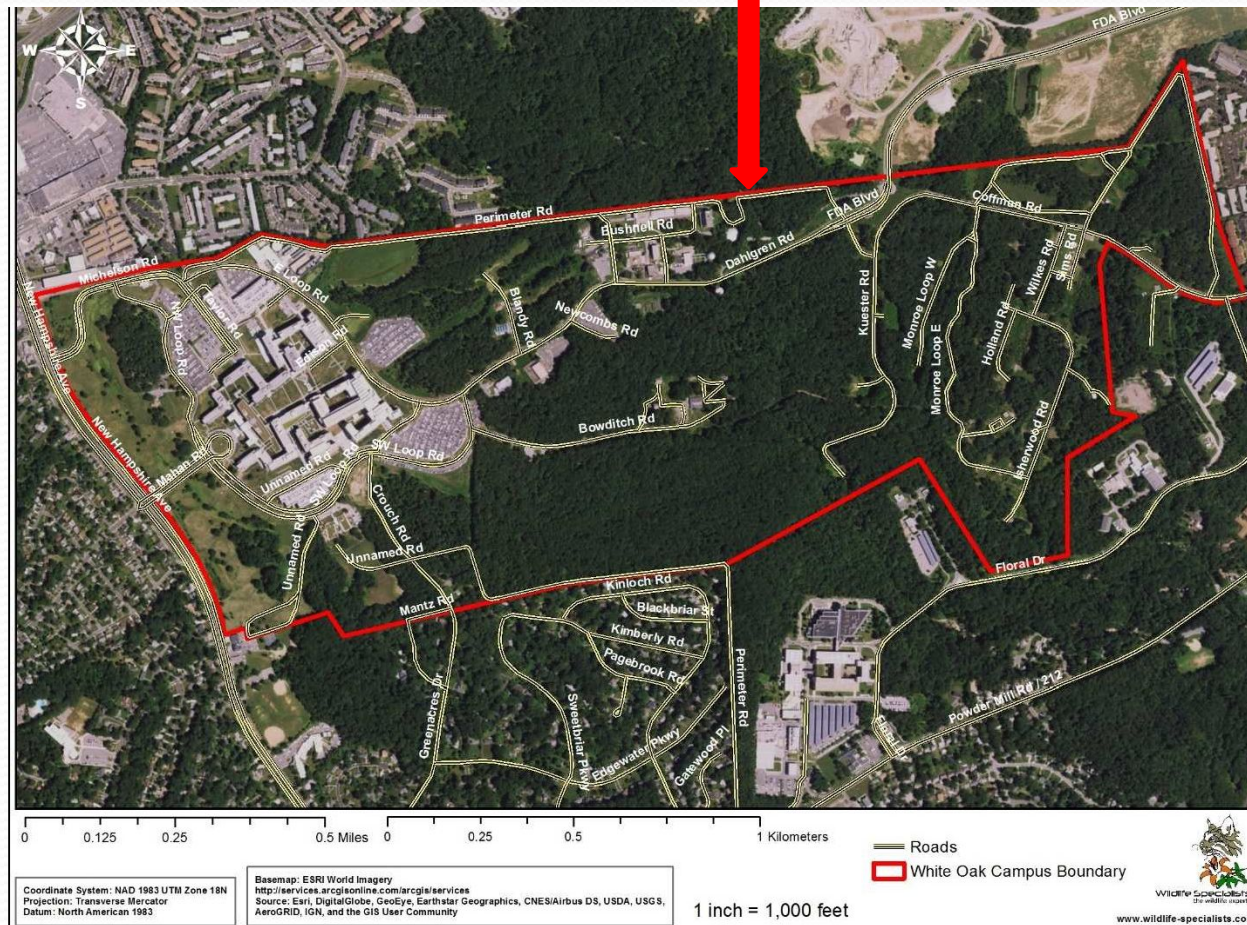
**For EPA's CBP FFWG**

# Paint Branch Stream

- 17 miles long
- Drains 31.5 sq miles
- Least developed area in Anacostia River Watershed
- Only 18% impervious



# Location of Bridge Blocking Stream





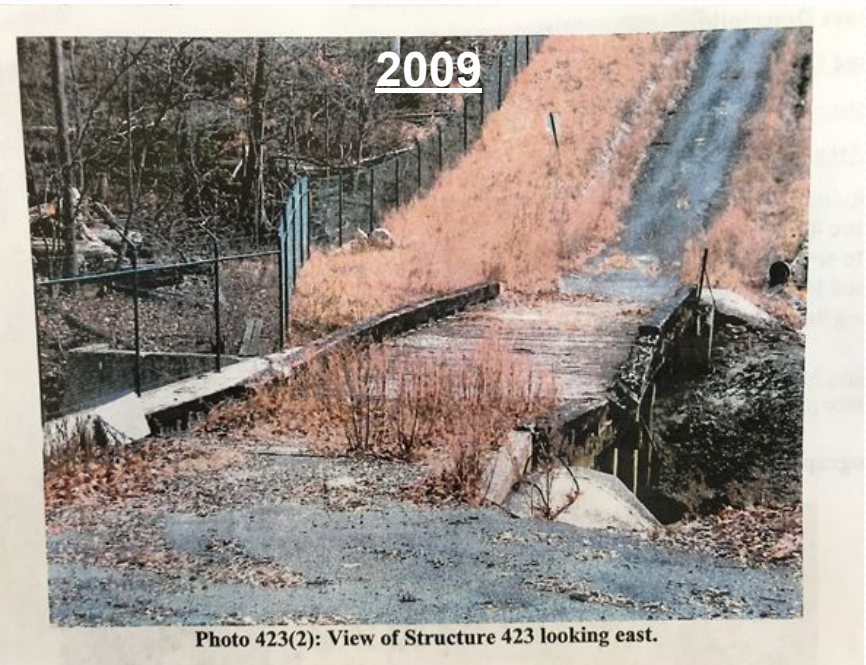
# GSA's Paint Branch Bridges





# Bridge Background

- *Built by Navy in 1945*
- *10 concrete abutments*
- *Creosote-soaked wood*
- *Declared structurally unsound in 2009*





# 2019 View Upstream & Downstream = *Total Fish Blockage*





# Estimated Soil Erosion Volume

*= Over 270 dump truck loads*





# 2008 & 2018 Aerial Photos with WSSC Sewer Line (Exposed)





# 2020 WSSC Sewer Line Work





# Collaboration



**Washington Suburban  
Sanitary Commission**



**THE MARYLAND-NATIONAL CAPITAL  
Park and Planning Commission**



*live more, play more*





# Stream Pump-around Work Area





# Fish Relocation





# Fish Relocation





# Fish Relocation





# Fish Relocation



# Paint Branch's Most Famous Fish





# The Bridge Comes Down!





# Stream Restoration Work Under Way





# Stream Restoration Work Under Way





# Stream Restoration Work Completed!





# Stream Restoration Work Completed!



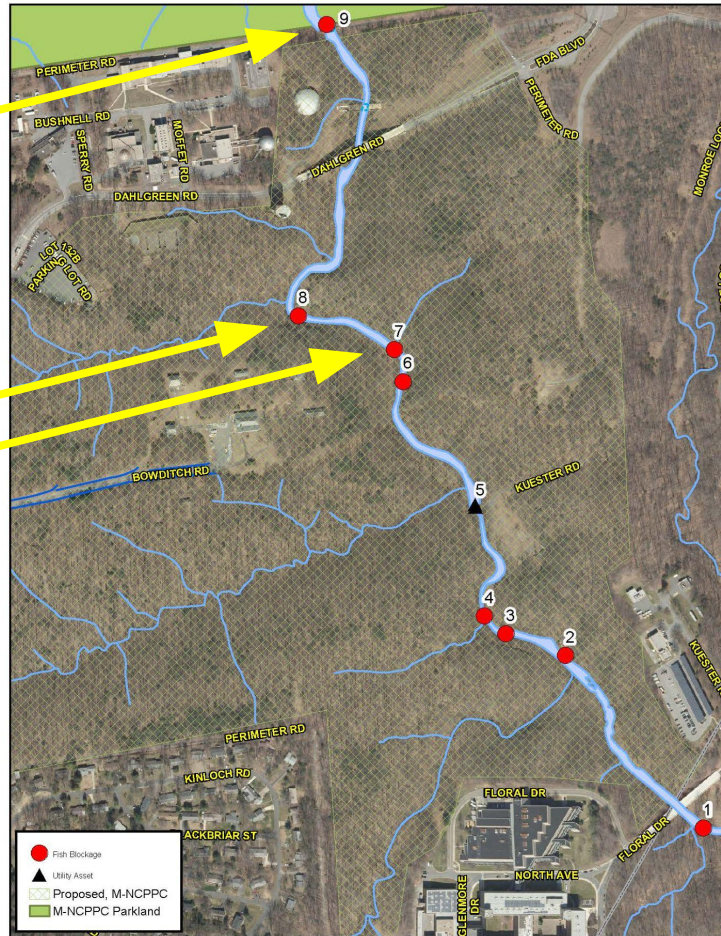


# ...But Just in One of Three Locations

Location 9 is done.

Locations 8 & 7 are next.

Paint Branch Fish Blockages



MWCOG is working with MNCPPC and other stakeholders to remove the remaining blockages.



# Location 8 - Old Navy Stone/Concrete Dam





# Location 8 - Old Navy Stone/Concrete Dam (Cont.)





# Location 9 - Old Navy Aerial Sewer/Water Pipes





# Location 9 - Old Navy Aerial Sewer/Water Pipes (Cont.)





# GSA Restorative Sites Program and Inflation Reduction Act

- Buildings vs. Sites
  - off-site impacts



**Restorative  
Sites**

- High Performance Green Buildings - SITES



ACT OF 2022  
★ ★ ★ ★ ★ ★ ★ ★ ★ ★  
**INFLATION  
REDUCTION**  
UNITED STATES OF AMERICA



# Collaboration



**Washington Suburban  
Sanitary Commission**



**THE MARYLAND-NATIONAL CAPITAL  
Park and Planning Commission**



*live more, play more*





# Regional Goal - Safe, Fishable and Swimmable Waterways





# Nature Active Nearby

- *Beaver* -





# Nature Active Nearby

- *Coyote* -





# Nature Active Nearby

- *Bobcat* -



- *Raccoon* -





# Nature Active Nearby

- *Blue Heron* -

- *Coyote & Heron* -





# Nature Active Nearby

- Coyote & Deer -





# Q&A / Contact Information

**Russell Clark**

**Stormwater Program Manager**

US GSA, National Capital Region, Public Buildings Service

Facilities Management & Services Programs Division

Landscape and Stormwater Branch

C: (202) 704-3642

Email: [russell.clark@gsa.gov](mailto:russell.clark@gsa.gov)

