



# Tree Canopy Workplanning 2024-2025

*Julie Mawhorter*  
*Forestry Workgroup,*  
*Tree Canopy Coordinator*  
*USDA Forest Service*  
*julie.mawhorter@usda.gov*

The screenshot shows the homepage of the Chesapeake Tree Canopy Network. At the top is a dark blue navigation bar with the logo on the left and links for SIGN UP, NEWSLETTER ARCHIVE, ABOUT US, CONTACT US, and CHESAPEAKEFORESTBUFFERS.NET on the right. Below the navigation bar is a main content area with a large aerial photo of a city street. On the left of this photo is a text box with a welcome message and a paragraph about the network's mission. On the right is a smaller text box with a featured article title and a 'Read More' link. Below the photo is a dark blue bar with the text 'Get updates on tree canopy news and events!' and links for SIGN UP and NEWSLETTER ARCHIVES. At the bottom is a section titled 'Tree Canopy Initiatives' with a sub-header 'Find local tree canopy assessments, goals, and urban forestry contacts.' Below this is a map interface with a search bar and a 'My Style' button. A yellow banner at the very bottom contains the website URL. On the right side of the bottom section is the 'chesapeake network' logo and a paragraph encouraging participation in the tree canopy conversation.

Chesapeake Tree Canopy Network

SIGN UP NEWSLETTER ARCHIVE ABOUT US CONTACT US CHESAPEAKEFORESTBUFFERS.NET

WHY TREE CANOPY? UNDERSTAND YOUR CANOPY EXPAND YOUR CANOPY MAINTAIN YOUR CANOPY

Welcome to the Chesapeake Tree Canopy Network

Connecting you with resources, stories, and best practices to understand your canopy, expand your canopy, and maintain your canopy. Learn about and make the case to others why tree canopy is so critical to a healthy, vibrant Chesapeake Bay watershed. We are building this resource as we go, so please send your ideas and suggestions for making the network most helpful.

Baltimore Tree Trust: Doing More Together  
[Read More](#)

Get updates on tree canopy news and events! SIGN UP NEWSLETTER ARCHIVES

Tree Canopy Initiatives

Find local tree canopy assessments, goals, and urban forestry contacts.

My Style Map Address Search

[www.chesapeaketrees.net](http://www.chesapeaketrees.net)

chesapeake network

Looking to participate in the tree canopy conversation? Join our group on the Chesapeake Network. Need help joining, posting, or have questions? Check out our [help guide \(PDF\)](#).

*Through the Chesapeake Bay Watershed Agreement, the Chesapeake Bay Program has committed to...*



**Goal:** *Vital Habitats*

**Outcome:** *Tree Canopy*

Continually increase urban tree canopy capacity to provide air quality, water quality and habitat benefits throughout the watershed. Expand urban tree canopy by **2,400 acres by 2025.**

# ADAPTIVE MANAGEMENT at CHESAPEAKE BAY PROGRAM

## Strategy Review System (SRS) Process

For each outcome: 2-year cycle

### Management Board Meetings

Feb. 2023 Full Review

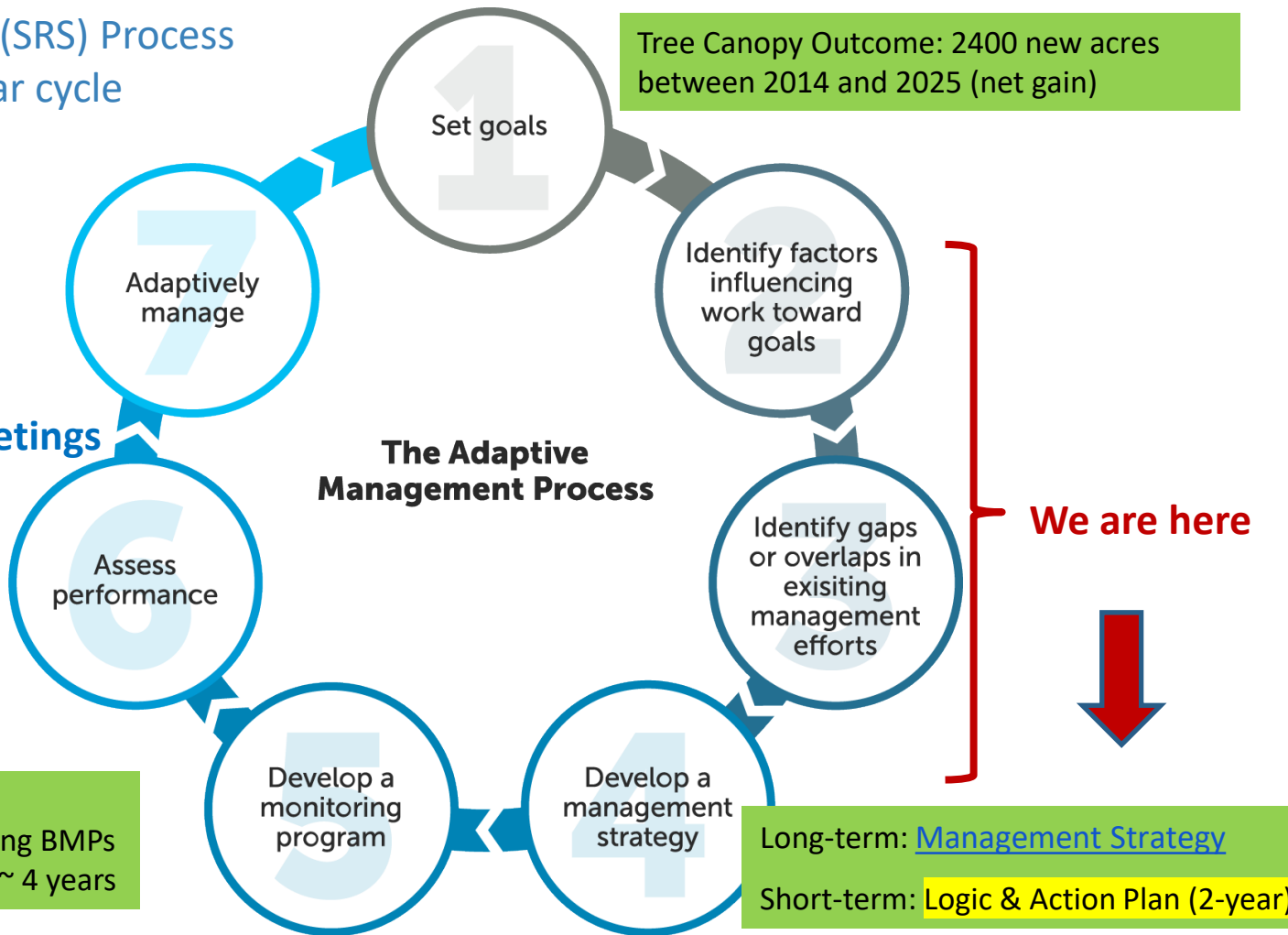
June 2024 Update

June 2025 Full Review



Tree Canopy Indicator:

- Annual progress Tree Planting BMPs
- Hi-Res Land Cover updates ~ 4 years

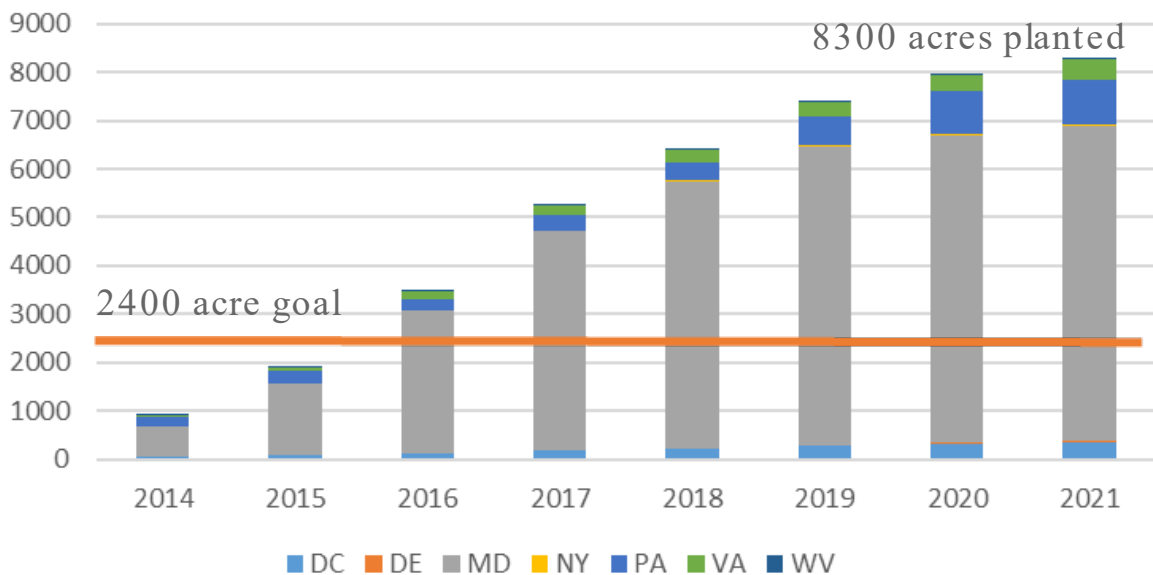


## What is our Expected and Actual Progress?



1.

### Urban Tree Planting BMPs Reported (cumulative acres)



2.

### Land Use/Land Cover Change Detected from Imagery

#### Tree Canopy Net Change in Census Places (2013/14-2017/18)

Jurisdiction (CB Only)	Net Change (Acres)
Delaware	-28
DC	21
Maryland	-13,804
New York	78
Pennsylvania	-2,444
Virginia	-9,548
West Virginia	-107
<b>Total</b>	<b>-25,832</b>

# Successes: Putting New Data to Use



## Tree Cover Status & Change

FOR CUMBERLAND COUNTY, PA

**41.6%**

Total Percent of  
County with Tree Cover

**\$14+ Million**

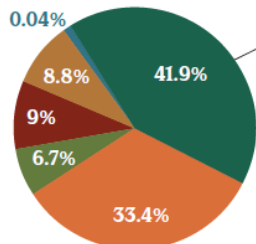
Annual Benefits provided by Tree Cover  
(in reduced air pollution, stormwater, & carbon dioxide)

**433 Acres**

Net Loss of Tree Cover on  
Developed Lands, 2013 to 2017

### What is the land use/land cover breakdown in your county?

**341,668 ACRES OF LAND AREA**  
IN CUMBERLAND COUNTY



**41.9%** Tree Cover<sup>1</sup>  
142,219 acres

**9%** Impervious  
(Buildings/Pavement)  
30,882 acres

**33.4%** Agriculture  
113,222 acres

**8.8%** Other<sup>2</sup>  
29,890 acres

**6.7%** Turf Grass  
(Lawns)  
22,569 acres

**0.04%** Non-Forested  
Wetlands  
163 acres

<sup>1</sup> Tree cover includes all trees occurring on all land uses, such as individual trees found over turf, impervious, agricultural, wetlands, or other lands. It also includes areas of "forest," defined in this dataset as patches of tree cover 1 acre or greater, with a minimum patch width of 240 feet.

<sup>2</sup> Other includes a mixture of non-treed land uses not captured in the main pie chart categories. See the Data Guide for detailed definitions of "other" and all the land use categories.

Land use/land cover statistics were generated using the 2022 edition of the Chesapeake Bay Land Use and Land Cover Database.

### Where does tree cover occur in your county?



**82%**  
is in forest  
(116,180 acres)



**1%**  
is over impervious  
(2,128 acres)



**11%**  
is over turf grass  
(15,762 acres)



**6%**  
is other tree cover  
(8,149 acres)

### What are some benefits of tree cover in your county?



**Total Air Pollution Removal Value**  
97 million lbs removed annually  
\$9.2 million saved annually  
Total air pollution removal includes CO<sub>2</sub>, NO<sub>2</sub>, O<sub>3</sub>, SO<sub>2</sub>, and Particulate Matter (PM2.5, PM10).



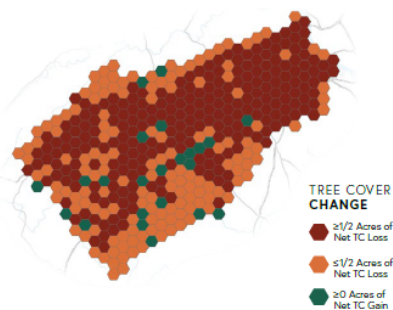
**Gallons of Reduced Stormwater Runoff Value**  
560.1 million gallons reduced annually  
\$5.0 million saved annually



**Carbon Sequestered Value**  
120,250 tons removed annually  
\$10,594 saved annually

Calculated based on 2017 tree cover data using:  
[landscape.treecools.org](https://landscape.treecools.org)

### How is tree cover changing on developed and developing lands?



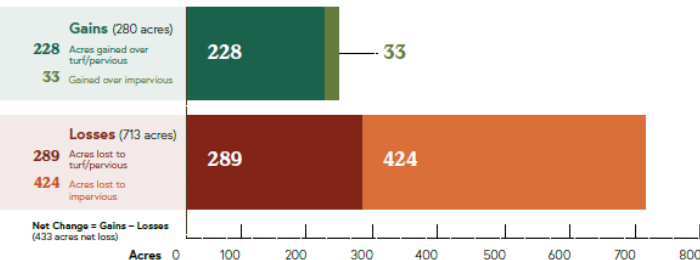
Understanding how your tree cover changes over time can inform the sustainable management of forests and community trees. The map to the left shows where your county has lost and gained tree cover from 2013 to 2017, focusing on land that is already or newly developed.

Tree cover can be lost quickly due to human activities (e.g., construction) or natural events (e.g., severe weather).

Tree cover can be gradually increased through tree planting and natural regrowth, but maintaining this new growth requires long-term investments.

Since mature, healthy trees provide significantly greater community benefits than newly planted trees, it is important to both preserve existing tree cover and seek opportunities to grow new trees and forests. Local land use planning, ordinances, and tree programs play a critical role!

### Tree Cover Change on developed/developing lands (2013-2017)



### Learn More:

#### Chesapeake Tree Canopy Network

Links to county fact sheets, user guides, map viewers, datasets, and more

#### Tree Equity Score

Explore maps of how tree benefits are distributed across communities

#### Capitalizing on the Benefits of Trees

A slideshow for local leaders featuring tree benefits, case studies and resources

#### State Urban and Community Forestry Assistance

(State contact and website)



**CHESAPEAKE TREES.NET**  
PUBLISHED AUGUST 2022



Fact sheets produced through a grant from the USDA Forest Service. USDA is an equal opportunity provider, employer and lender.



## Challenges

- **Tree Canopy losses** – outpacing current planting rates
  - Local/state policies to conserve canopy
  - Scaling up planting and maintenance programs
- **Tree Equity** – need more resources, engagement, and assistance flowing to disinvested communities
- **Nursery and workforce supply** – to meet ambitious goals



## Based on what we learned, we plan to ...

- Use Tree Canopy Funding & Policy Roundtable to draft our next set of partnership and jurisdiction actions
- Address regional tree supply issues and opportunities (FY23 GIT project)
- Expand collaboration with Local Action Cohort, Strategic Engagement Team, Healthy Watersheds GIT, Stewardship GIT to weave tree canopy into related local engagement efforts



## **Equitable and inclusive restoration ...**

- New IRA Urban and Community Forestry funding to state and local/nonprofit partners focused on disadvantaged communities
- Develop a quarterly tree equity webinar forum to build an inclusive network of community practitioners
- Collaborate (cross-GIT + external) on workforce development pathways in tree-related jobs



# Successes: Tree Canopy Funding & Policy Roundtable

(FY22 GIT-Funded)



Virtual:

March 13-14 2023

Full recordings, final  
webinar/report and state  
action plans [posted here](#)

## Roundtable Outcomes:

Accelerate equitable, climate-resilient tree canopy implementation across the watershed

- Equip local and state governments to advance coordinated solution pathways to expand urban tree canopy in the Chesapeake Bay Watershed
- Identify suite of strategies and specific actions (funding, policy, programmatic) to advance tree goals
- **Develop action plans in each Bay Jurisdiction**

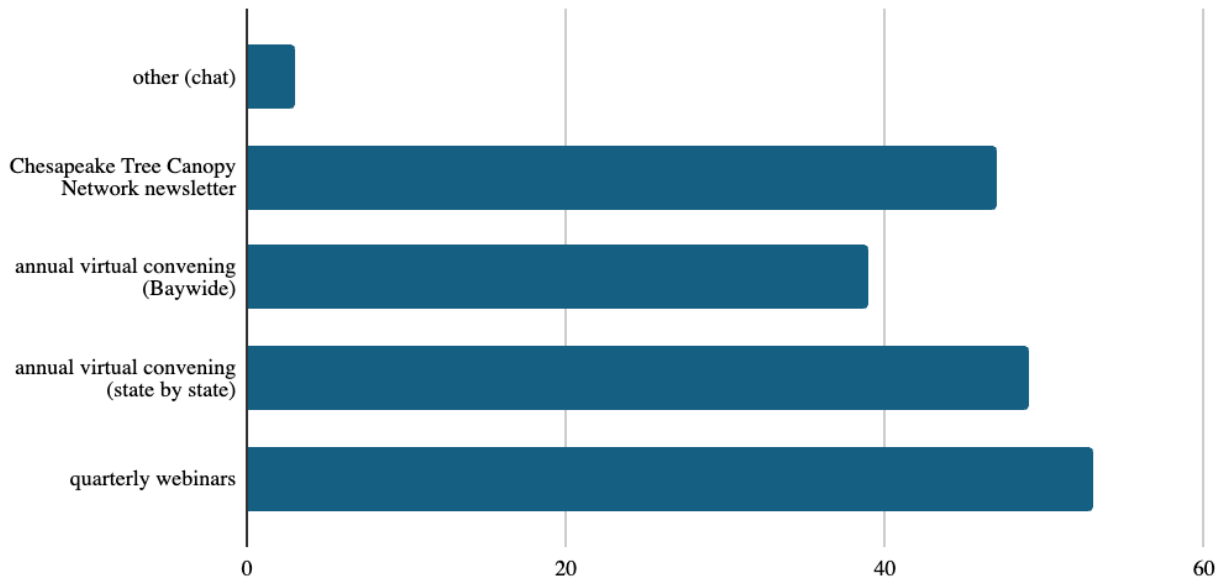
# Roundtable Webinar – poll on regional priorities

What are the top three priorities that the Forestry Workgroup should work on regionally (check up to 3)?	
Amend regional and state tree canopy grant funding programs to prioritize equity and maintenance.	22
Dedicate adequate state and local funding for tree maintenance on public and private property.	40
Invest in target communities through workforce development: hire tree care coordinators and tree maintenance staff from the communities served; provide training, mentorship, and support.	30
Share models and best practices for effective incentive-based and regulatory approaches to protect urban tree canopy.	20
Strengthen local codes and ordinances to protect trees, especially during development and redevelopment. Where necessary, amend state policy to enable localities to enact ordinance improvements.	42
Integrate trees for climate resilience into comprehensive plans (and other local plans) with specific goals; include climate resilience strategies in urban forest plans and projects.	29
Improve utilization of data on tree canopy coverage and economic value of trees, including through the provision of technical assistance.	9
Provide communities with technical assistance to implement policy and ordinance changes and to apply for and manage funding and financing opportunities.	29
Develop consistent, customizable, multilingual messaging regarding the benefits of trees, including guidance on how to address competing priorities.	11
Proactively identify and meaningfully partner with trusted community voices in areas targeted for tree canopy initiatives	16

## **Roundtable Recommendations – JamBoard Activity**

## Input on Draft Tree Canopy Workplan Actions...

How would you like to keep engaging with this network (select all that apply)?



# 1. Bolster funding and partnerships

## Roundtable recommendations

1. Amend regional and state tree canopy grant funding programs to prioritize equity and maintenance.
2. Dedicate adequate state and local funding for tree maintenance on public and private property.
3. Invest in target communities through workforce development: hire tree care coordinators and tree maintenance staff from the communities served; provide training, mentorship, and support.

## Workplan steps

MANAGEMENT APPROACH 1: Bolster funding and partnerships				
Action #	Description of Step	Responsible Party or Parties	Geographic Location	Expected Timeline
1.1	Implement funding strategies from state tree canopy action plans	1. DE FS, DNREC and partners 2. DDOT, DOEE and partners 3. MD FS, MDE and partners 4. NYSDEC, Upper Susquehanna Coalition and partners 5. PA DCNR and partners 6. VA DOF and partners 7. WVDEP, WVDOF, Cacapon Institute and partners	Bay-wide	2024-2025
1.2	Implement federal and state IRA grants supporting disadvantaged communities	USFS, DE FS, DDOT, MD FS, NYSDEC, PA DCNR, VA DOF, WVDOF	Bay-wide	2024-2028
1.3	Complete GIT-funded project on Addressing Regional Tree Supply Challenges and Opportunities	University of Florida (contractor), with input from USFS, Forestry Workgroup	Bay-wide	2024

Any other key action steps we should lead?

## 2. Strengthen policy and ordinances

### Roundtable recommendations

4. Share models and best practices for effective incentive-based and regulatory approaches to protect urban tree canopy.

5. Strengthen local codes and ordinances to protect trees, especially during development and redevelopment. Where necessary, amend state policy to enable localities to enact ordinance improvements.

6. Integrate trees for climate resilience into comprehensive plans (and other local plans) with specific goals, and include climate resilience strategies in urban forest plans and projects.

### Workplan steps

MANAGEMENT APPROACH 2: Strengthen policy and ordinances				
Action #	Description of Step	Responsible Party or Parties	Geographic Location	Expected Timeline
2.1	Compile models and best practices for effective incentive-based and regulatory approaches to protect urban tree canopy, including case studies that could be replicated.	Forestry Workgroup – new GIT funding proposal	Bay-wide	2024-2025
2.2	Implement policy strategies from state tree canopy action plans	1. DE FS, DNREC and partners 2. DDOT, DOEE and partners 3. MD FS, MDE and partners 4. NYSDEC, Upper Susquehanna Coalition and partners 5. PA DCNR and partners 6. VA DOF and partners 7. WVDEP, WVDOF, Cacapon Institute and partners	Bay-wide	2024-2025

Any other key action steps we should lead?

# 3. Increase technical capacity and knowledge

## Roundtable recommendations

7. Improve utilization of data on tree canopy coverage and economic value of trees, including through the provision of technical assistance.

8. Provide communities with technical assistance to implement policy and ordinance changes, and to apply for and manage funding and financing opportunities.

## Workplan steps

MANAGEMENT APPROACH 3: Increase technical capacity and knowledge				
Action #	Description of Step	Responsible Party or Parties	Geographic Location	Expected Timeline
3.1	Convene <b>annual virtual</b> Tree Canopy Summit to engage urban forestry practitioners and cross-sector partners in best practices and innovative strategies	USFS, Forestry Workgroup, Alliance for the Chesapeake Bay	Bay-wide	2024-2025
3.2	Communicate Tree Canopy status & change (2013-2018) to stakeholders through updates to the State of Chesapeake Forests <u>Storymap</u> and new municipal factsheets	USFS, USGS, Chesapeake Conservancy, and Forestry Workgroup, with input from Land Use Workgroup, Local Leadership Workgroup	Bay-wide	2024-2025
3.3	Develop a trees & climate resilience strategy guide for local governments	Forestry Workgroup – new GIT funding proposal	Bay-wide	2024-2025

Any other key action steps we should lead?

## 4. Expand community outreach and education

### Roundtable recommendations

9. Develop consistent, customizable, multilingual messaging regarding the many benefits of trees, including guidance on how to address competing priorities.

10. In communities targeted for tree canopy initiatives, proactively identify and meaningfully partner with community voices.

### Workplan steps

MANAGEMENT APPROACH 4: Expand community outreach and education				
Action #	Description of Step	Responsible Party or Parties	Geographic Location	Expected Timeline
4.1	Host quarterly webinars: tree equity community of practice	USFS, Forestry Workgroup, CBP communications, with input from Diversity Workgroup	Bay-wide	2024-2025
4.2	Continue updating the Chesapeake Tree Canopy Network and e-newsletter as our primary hub for resources and sharing community stories	Alliance for the Chesapeake Bay, USFS, Forestry Workgroup	Bay-wide	2024-2025
4.3	CB tree canopy outreach materials project?	TBD	Bay-wide	2024-2025

Any other key action steps we should lead?



## Next Steps

- Circulate revised Work Plan to Forestry Workgroup for review and edits
- Finalize and post
- At a spring FWG meeting, get final input on Tree Canopy recommendations/requests to elevate at June Management Board meeting