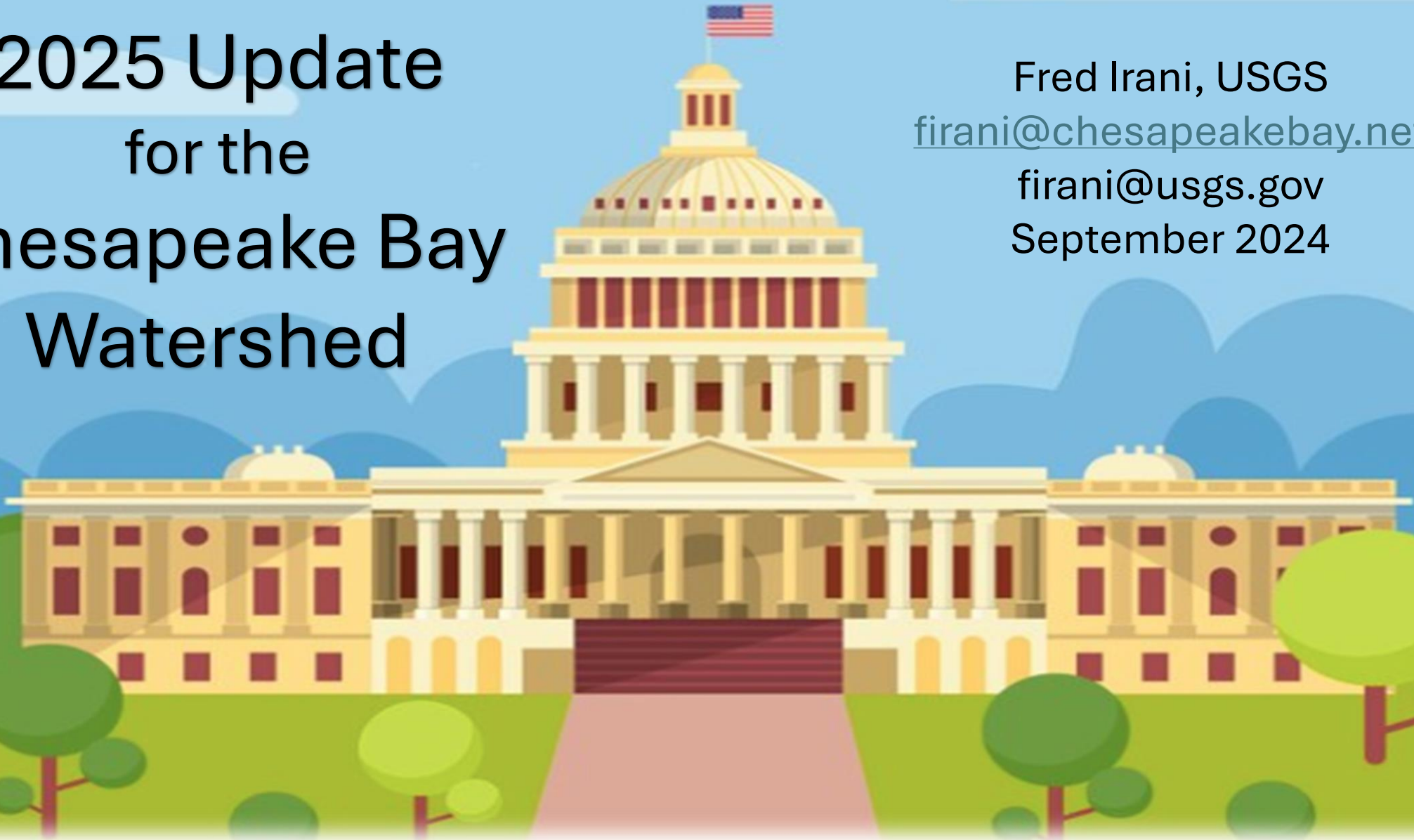



Federal Facilities 2025 Update for the Chesapeake Bay Watershed

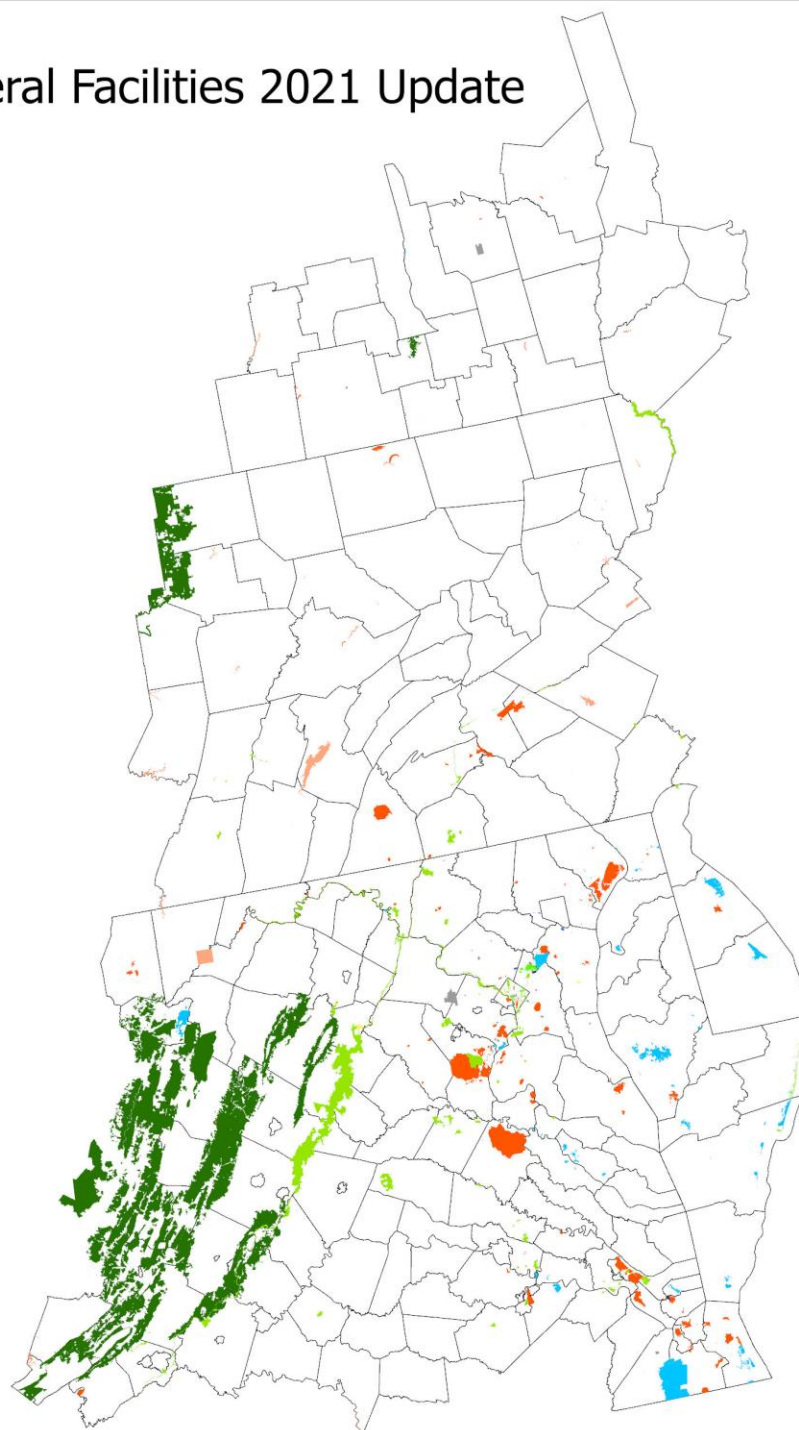
Fred Irani, USGS
firani@chesapeakebay.net
firani@usgs.gov
September 2024



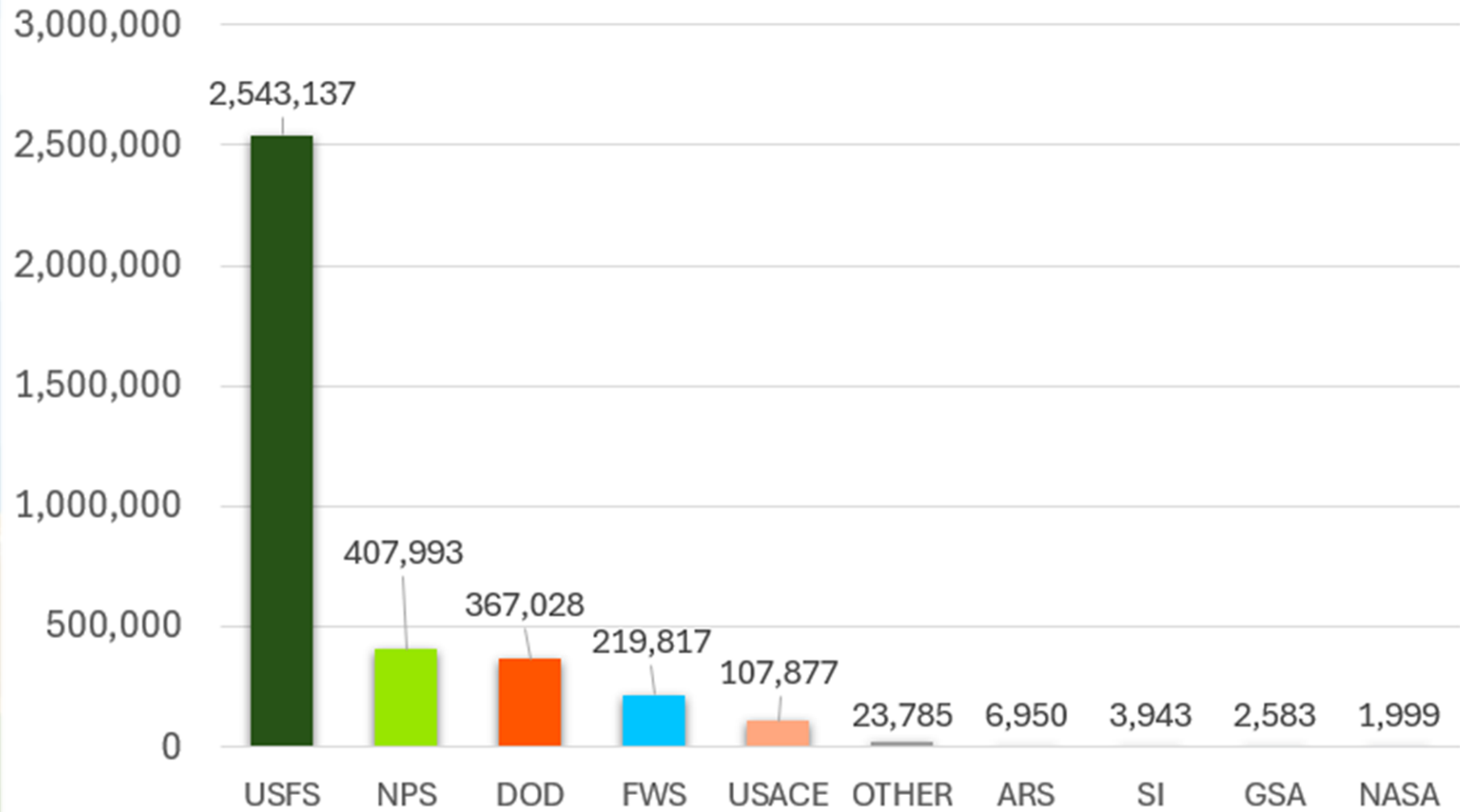
Chesapeake Bay Watershed Federal Facilities 2021 Update

Facility	Acres
USFS	2,543,137
NPS	407,993
DOD	367,028
FWS	219,817
USACE	107,877
OTHER	23,785
ARS	6,950
SI	3,943
GSA	2,583
NASA	1,999
Total:	3,685,113 Acres
 Study Area Counties	

2021 USACE Lands are
Separate from DOD



2021 Update Federal Facility Acres

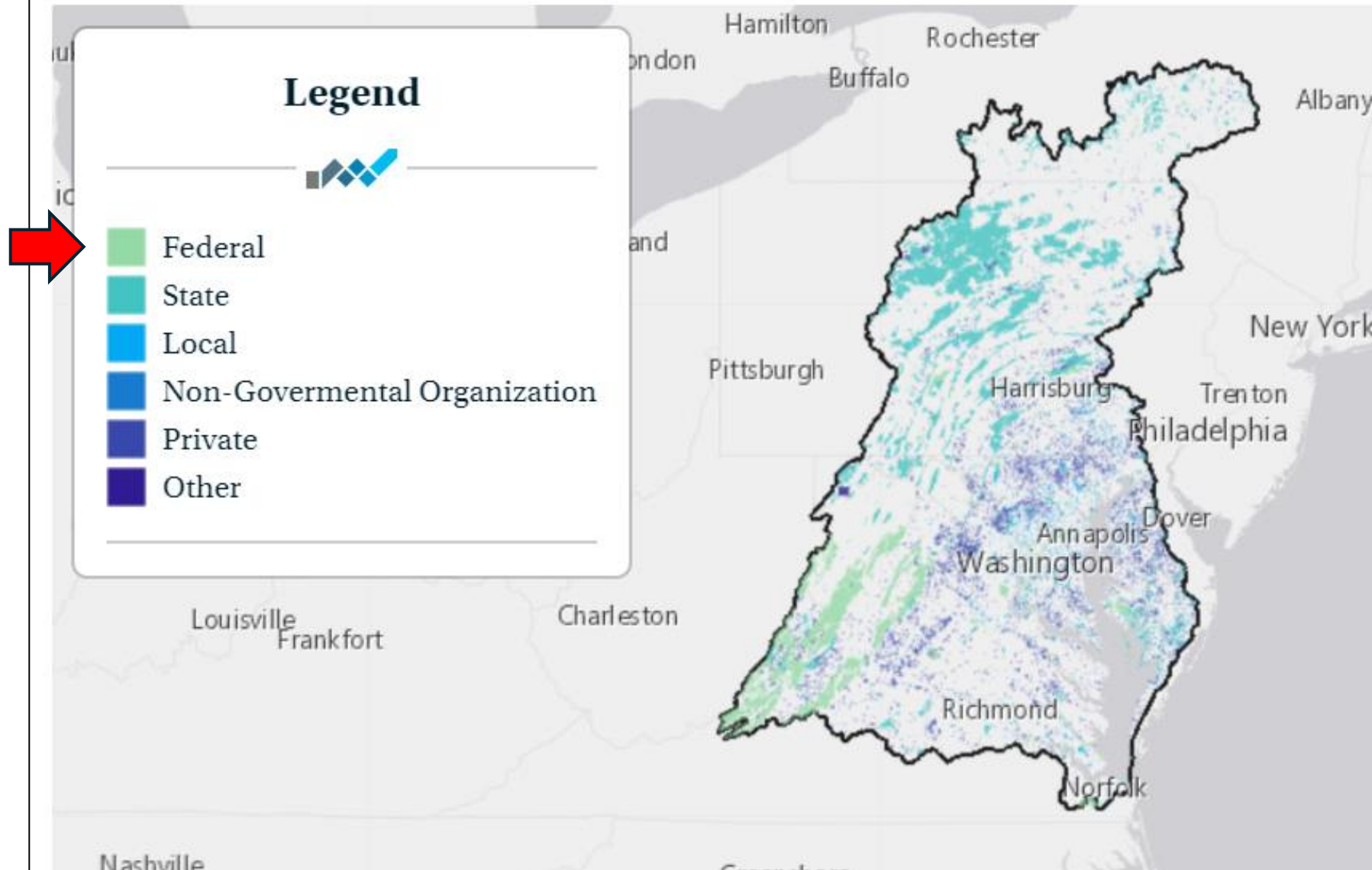




Federal Boundaries for Phase 7 and Protected Lands Indicator

- Federal land and facility boundaries need to be reviewed and updated if needed in preparation for the Phase 7 suite of models.
- Federal lands need updated protection status information to accurately monitor and attribute increases in land protection in the Bay watershed.

Protected Land Ownership (2022)

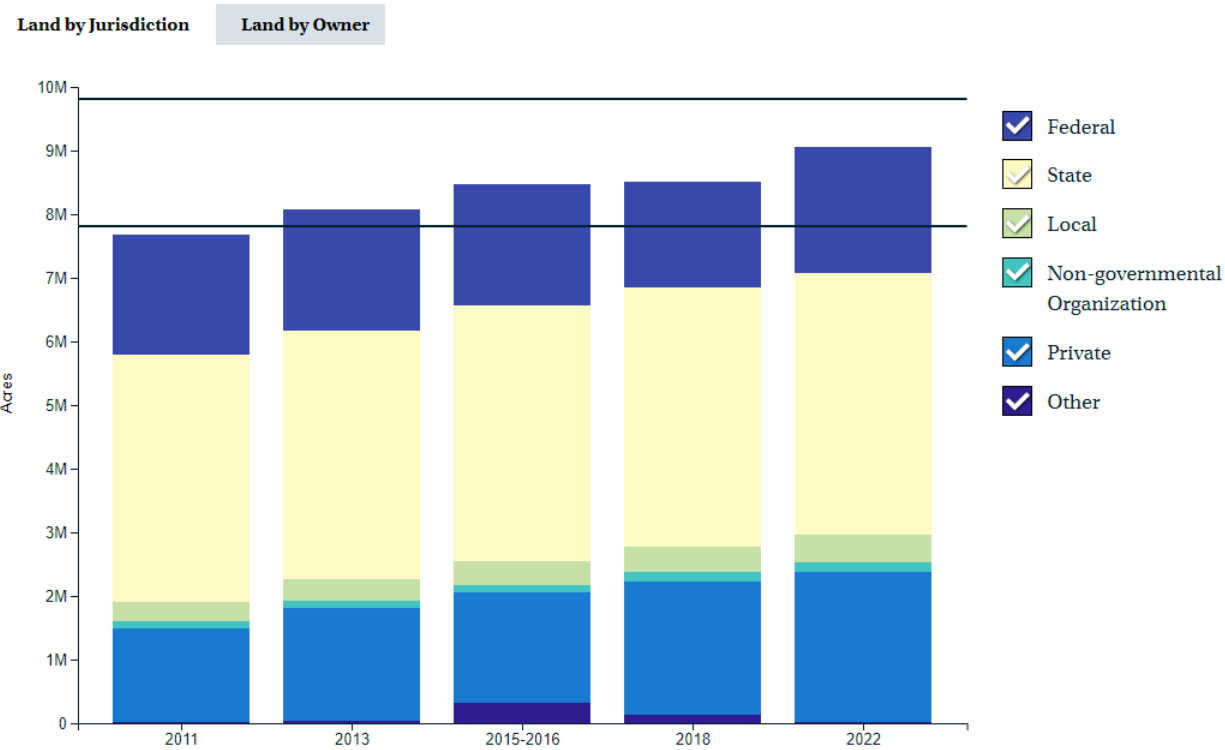


**CBP
Protected
Lands
Indicator**

Protected Lands (Cumulative) (2011-2022)

Some increases in acreage can be attributed to newly protected parcels of land. Other increases can be attributed to the addition of previously protected but newly digitized, corrected or refined parcels.

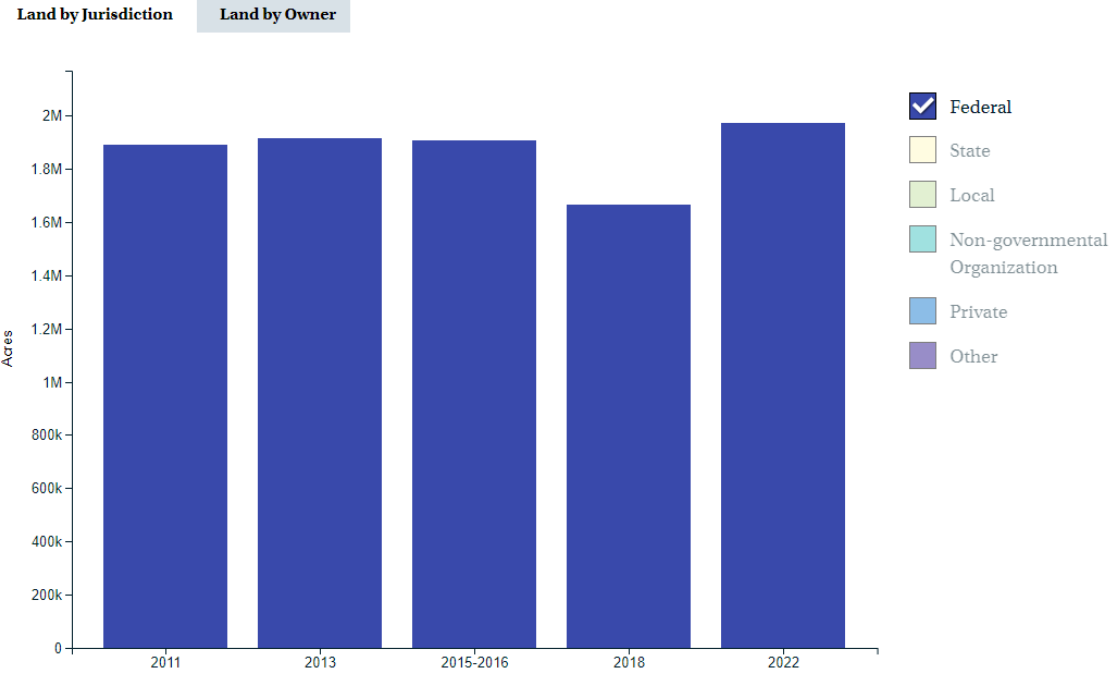
[VIEW CHART](#) [VIEW TABLE](#)



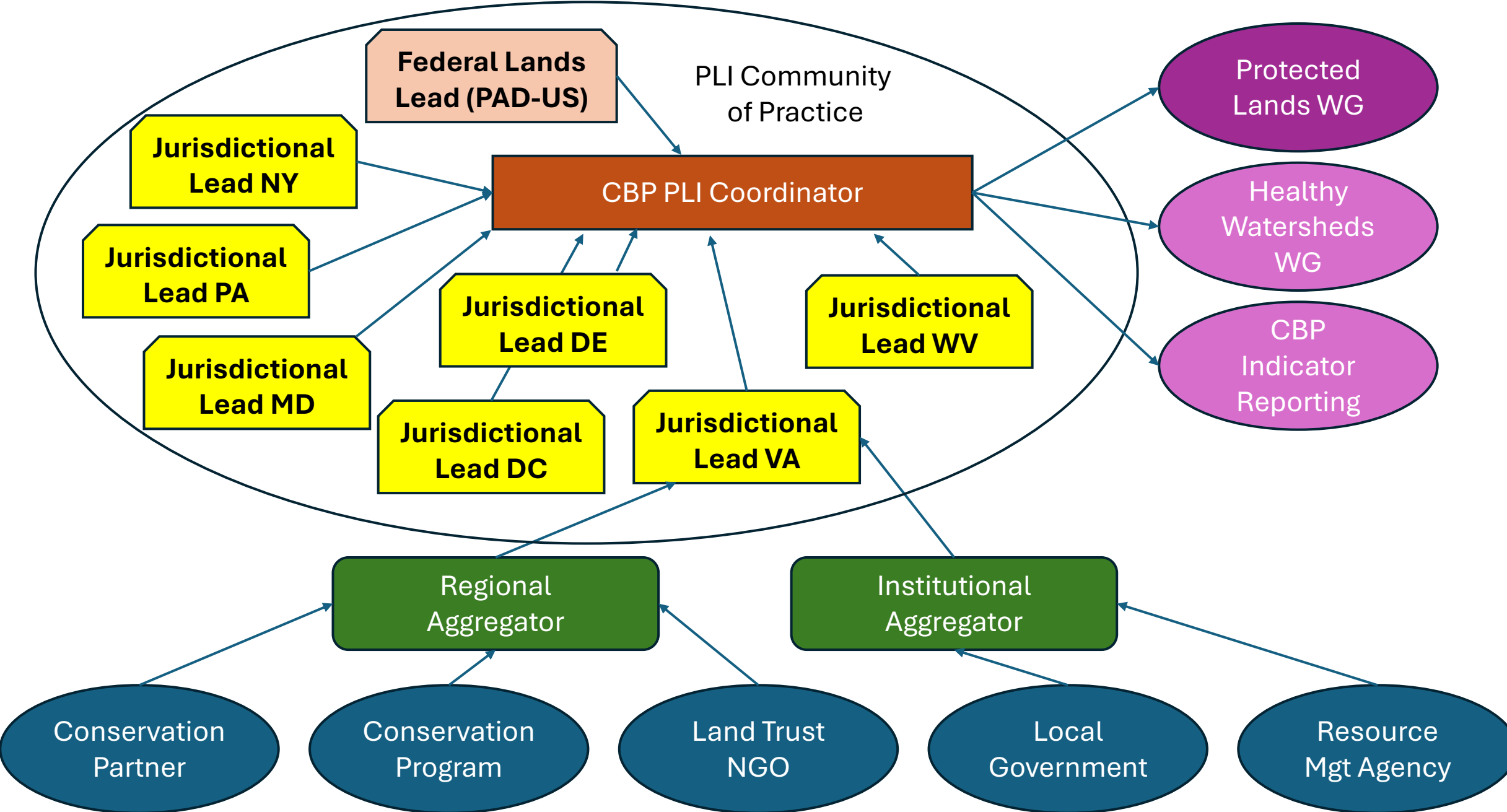
Protected Lands (Cumulative) (2011-2022)

Some increases in acreage can be attributed to newly protected parcels of land. Other increases can be attributed to the addition of previously protected but newly digitized, corrected or refined parcels.

[VIEW CHART](#) [VIEW TABLE](#)



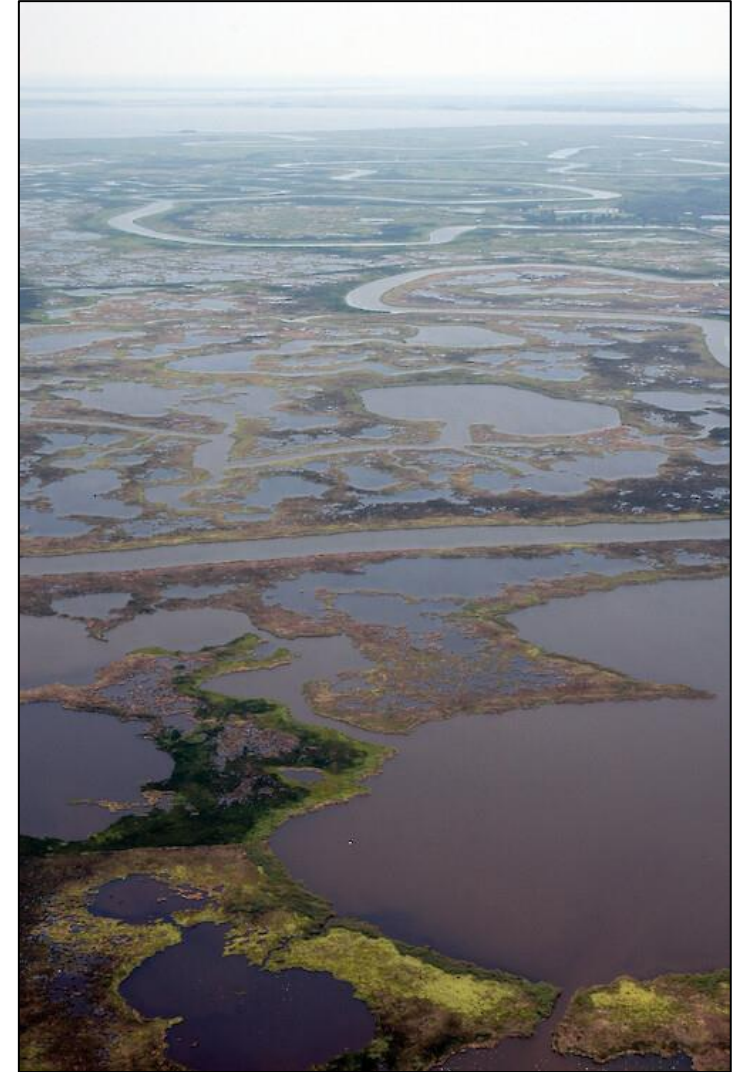
PLI Data Aggregation and Reporting



- Protected Lands 2024 data call to occur in **January 2025**
- Federal footprint of protected lands will be extracted from **PADUS** (unless we are told otherwise)

Date of Establishment (DOE) Improvement Strategy: Federal Lands

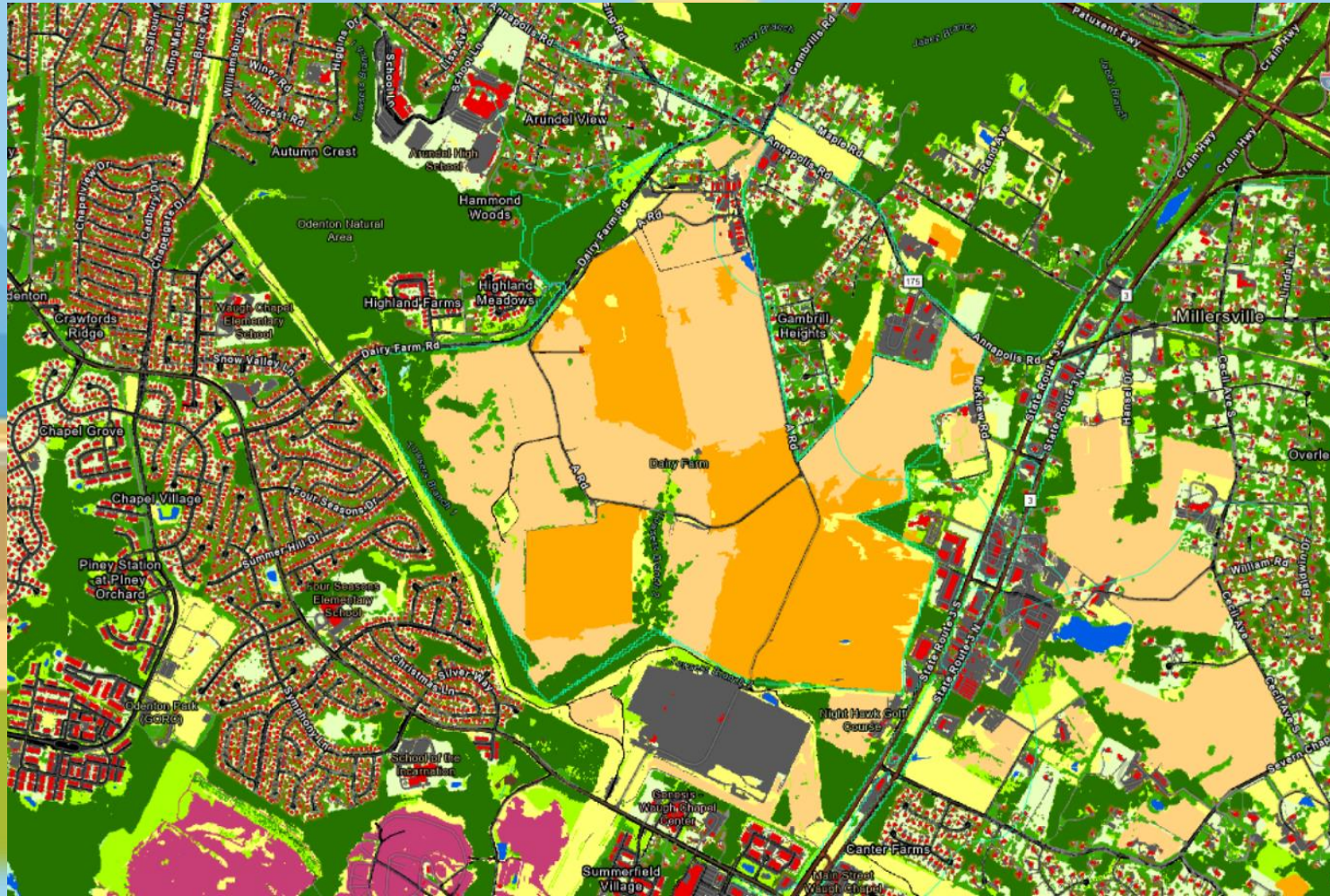
- Federal PLI data in PAD-US account for:
 - 4% of all records without DOEs
 - 30.5% of all acreage without DOEs
 - 907,630 acres or 767 acres per record, more than double the next highest category
- Federal management units do not report annexation areas separate from the original date of establishment
- As some of the largest protected areas, not reporting new acquisitions greatly limits the ability to record trends
- Records for Federal protected areas are managed by relatively small Federal real estate offices
- A case study of a single Federal management unit would inform the level of work needed to address this issue



Blackwater National Wildlife Refuge grew from 8,200 acres in 1933 to 33,000 today – DOE is listed as 1933

Federal Land Uses

2017/18 High-res Land Use Data (acres)



Ownership in PADUS

- Department of Navy
- Anne Arundel County

High-res Land Use:
Cropland and Pasture

Federal Land Uses in CAST (Phase 6)

2017/18 High-res Land Use Data (acres)

FED_Agency	CROP	PAST	NATURAL	DEVELOPMENT	HARV_FOR	OTHER	TOTAL
NonFED	3,852,416	5,206,876	23,596,350	5,274,492	281,209	557,004	38,768,348
OTHER	236	801	6,665	9,420	2	152	17,275
FWS	1,992	694	74,450	1,721	12	11,112	89,981
NPS	6,169	18,113	321,463	14,466	307	2,672	363,191
DOD	4,887	11,027	252,674	75,222	106	21,831	365,746
USFS	371	7,274	1,445,128	7,272	44	3,710	1,463,799
GSA	-	18	619	1,932	-	15	2,583
ARS	1,173	801	3,900	1,021	-	54	6,950
NASA	4	19	1,188	759	-	29	1,999
SI	7	606	2,969	350	-	12	3,943
Pct_FED	0.38%	0.75%	8.20%	2.08%	0.17%	6.64%	5.64%

Federal Land Uses (sources) for Phase 7

- In the spirit of equity and federal leadership, consideration should be given to attributing additional land management responsibilities to federal agencies.
- Currently, federal agencies are not accountable for cropland, pasture, harvested forest, construction, and septic systems even though these sources of nutrients and sediment exist on federal properties.

Options to consider:

1. No change to federal land uses for Phase 7.
2. Attribute harvested forest, construction, and septic systems to federal agencies.
3. Attribute cropland, pasture, harvested forest, construction, and septic systems to federal agencies (adding them incrementally through a tiered approach).

A stylized, colorful illustration of the U.S. Capitol building. The building is depicted in a simplified, blocky style with yellow walls and red roofs. A large, light blue rectangular box is superimposed over the center of the image, containing text. The background features a blue sky with white clouds and green trees in the foreground.

Other Information Needed from FFWG

- POC's for Federal Facility/Land Footprints

Questions?

Fred Irani, USGS
firani@chesapeakebay.net
firani@usgs.gov
September 2024

