



Chesapeake Bay Program
Science. Restoration. Partnership.

March 20, 2024

Strategy Review System (SRS) 2024 Process

LUWG Meeting
Jackie Pickford, LUWG Staffer

Slides adapted from HWGIT [SRS presentation](#) by Sophie Waterman

The Land Use Outcomes



2 0 1 4

As amended, October 5, 2022

GOALS & OUTCOMES

LAND CONSERVATION

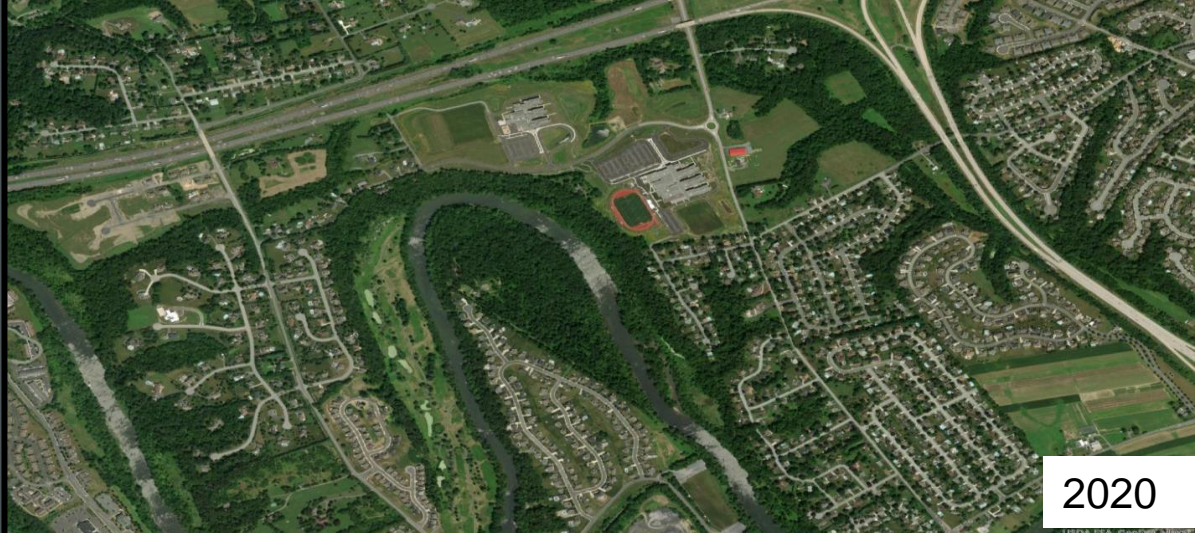
The landscapes around the Bay and its tributaries are ecologically, culturally, historically and recreationally valuable to the people and communities of the region. Stimulating, renewing and expanding commitments to conserve priority lands for use and enjoyment is an integral part of furthering the watershed's identity and spirit.



GOAL: Conserve treasured landscapes in order to maintain water quality and habitat; sustain working forests, farms and maritime communities; and conserve lands of cultural, indigenous and community value.

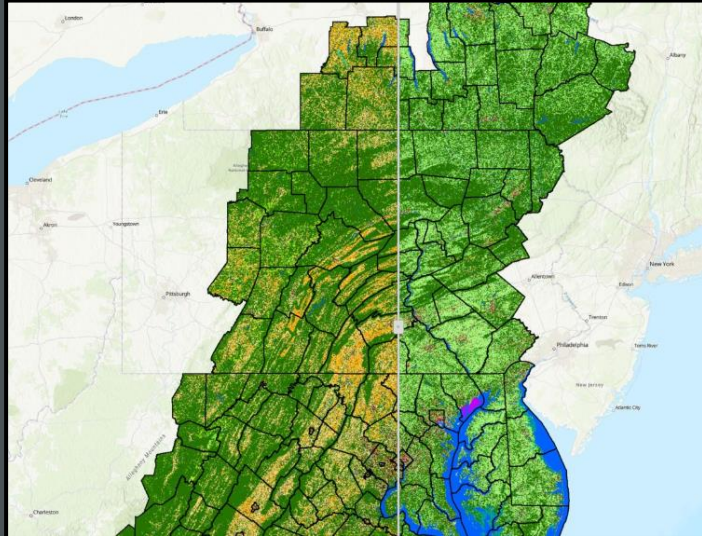
LAND USE METHODS AND METRICS (LUMM)

Assess and understand the impacts of land use change on watersheds, habitats, and communities at a scale relevant to county-level decision-makers.



LAND USE OPTIONS EVALUATION (LUOE)

Evaluate policy options,
incentives and planning tools
to reduce the rate of
conversion of agricultural
lands, forests and wetlands
as well as the rate of
changing landscapes.

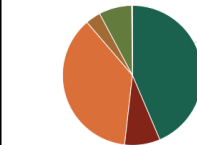


Tree Cover Status & Change FOR CUMBERLAND COUNTY, PA

43.6% Total Percent of County with Tree Cover
\$42.6 Million Annual Benefits provided by Tree Cover (in reduced air pollution, stormwater, & carbon dioxide)
-791 Acres Net Loss of Tree Cover on Developed Lands, 2013 to 2017

What is the land use/land cover breakdown in your county?

350,179 ACRES OF LAND AREA
IN CUMBERLAND COUNTY



43.6% Tree Cover¹
152,816 acres
36.9% Agriculture
129,193 acres
7.6% Turf Grass
26,560 acres

8.2% Impervious
(Buildings/Pavement)
12,220 acres
3.5% Other²
12,220 acres
0.2% Non-forested
Wetlands
643 acres

1. Tree cover includes all trees occurring on all land uses, such as individual trees found over turf, impervious, agricultural, wetlands, or other lands. It also includes areas of "forest," defined in this dataset as patches of tree cover 1 acre or greater, with a minimum patch width of 240 feet.
2. Other includes a mixture of non-forest land uses not captured in the main pie chart categories. See the Data Guide for detailed definitions of "turf" and all the land use categories.

Where does tree cover occur in your county?

83.9% is in forest
(128,186 acres)
1.4% is over impervious
(2,075 acres)
9.4% is over turf grass
(14,411 acres)
5.3% is other tree cover
(8,144 acres)

What are some benefits of tree cover in your county?

Total Air Pollution Removal Value
9,680 lbs removed annually
\$9.2 Million saved annually
Total air pollution removal includes CO₂, NO₂, O₃, SO₂, and Particulate Matter (PM_{2.5}, PM₁₀)
Gallons of Reduced Stormwater Runoff Value
560.8 million gallons reduced annually
\$5.0 million saved annually
Carbon Sequestered Value
151,000 tons removed annually
\$28.4 million saved annually

Calculated based on 2017 tree cover data using landcover.cumberland.org

The Strategy Review System (SRS) Process

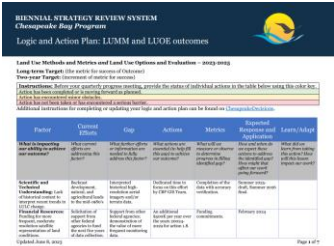
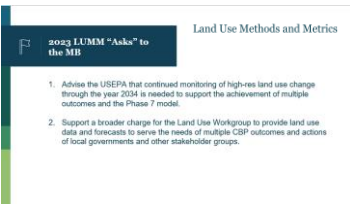
What is the Strategy Review System (SRS)?

- A structured process to help us manage and report on progress towards our goals and outcomes.
- Occurs on 2-year cycle.
- Purpose is for outcomes:
 - Report on progress.
 - Reflect on challenges.
 - Request action or assistance from the Management Board.
 - Adapt future work accordingly.



The SRS process involves:

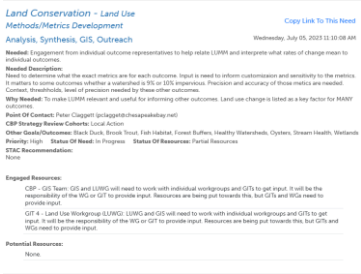
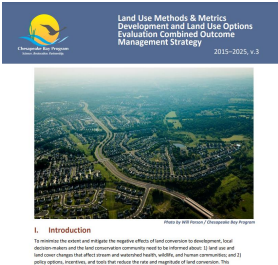
LUMM & LUOE went through SRS in early 2023. Materials linked in slide 12.



Creating an outcome review summary reflecting on last 2 years

Presenting to the MB & requesting action/assistance from them (if applicable)

Creating a 2-year workplan



Creating a management strategy

Creating a science needs list

We have a new SRS process, starting this year.

Our options are to:

A) Undergo the full SRS process

- Required:
 - Developing an outcome summary
 - Updating workplan
 - Updating science needs list
- Presenting to the MB in June (~45 min)

B) Give a brief update to the MB

- Required:
 - Presenting to the MB in June (~15 min)
- Optional:
 - Developing an outcome summary
 - Updating workplan
 - Updating science needs list

C) “Pass” on SRS for 2024

- Nothing is required.
- We will still have a chance to present to the MB in June 2025.

Some things to keep in mind...

- We went through SRS last year. Do we need to update our materials to reflect things that have happened since then? For example:
 - Updated LUWG charge (Sept 2023)
 - Draft “[land use strategy](#)” (Sept 2023)
 - GIT funding projects
 - Phase 7 CAST schedule
- More flexibility with the new SRS process – opportunity to create a workplan that better fits our workgroup needs

Action: Please review our 2023 SRS materials and let LUWG leadership know the following by Wed, April 3rd:

- Which SRS option should we choose for 2024?
 - Option A) Full SRS process
 - Option B) Brief Update
 - Option C) “Pass” on SRS for 2024
- If option A or B - what needs to be updated from our 2023 materials? What new information should be included? Excluded?

Our 2023 SRS materials are linked in slide 12. Additional info about the SRS process is in slides 13 – 20.

Additional Information

2023 SRS Materials for LUMM and LUOE

Workplan

Previously known as “Logic and Action Plan” (LAP).
Highlights actions we plan to accomplish in 2023 – 2024.
LUMM + LUOE share this.

Management Strategy

LUMM + LUOE share a Management Strategy.

LUMM Pres.

Presentation to the Management Board for LUMM outcome.

LUMM Narrative Analysis

Now referred to as “outcome review summary”.

LUOE Pres.

Presentation to the Management Board for LUOE outcome.

LUOE Narrative Analysis

Now referred to as “outcome review summary”.

2024 SRS Timeline for Land Use Outcomes

We are only required to participate in these steps if we choose *Option A) Full SRS Process*

April 8, 2024



Participate in SRS Check-In Meeting

Begin to prepare SRS documentation:

- (1) Outcome Review Summary
- (2) Assessment of current workplan



May 30, 2024

Submit SRS documentation 2 weeks before QPM



Post June 13, 2024

Develop workplan for the upcoming 2 years and revise Management Strategy



May 16, 2024

Participate in optional Coordinator/Staffer “dry run” meeting



June 13, 2024

Quarterly Progress Meeting (QPM)



September 5, 2024

Post revised Management Strategy and Workplan

Outcome Review Summary

Helps outcome prepare for the Quarterly Progress Meeting (QPM). Records information about our outcome, such as:

- evaluation of progress
- successes & challenges
- factors influencing progress
- addressing gaps

In previous SRS cycles, this document was known as the “narrative analysis”.



NOTE: Delete all notes in this blue color prior to finalizing your Outcome Review Summary. These comments are intended to help you draft your Outcome Review Summary.

NOTE: The Outcome Review Summary document will help you prepare for your Quarterly Progress Meeting (QPM) and will provide the Management Board with the information they need to discuss progress toward your outcome. Finalized responses to all questions in this document will be submitted to the Management Board at least two weeks prior to your QPM (Step 5 of the Strategy Review System process). You may use this document for your Dry Run in Step 4 and in your optional presentation to the MB in Steps 5b and 6.

[OUTCOME NAME]
[MONTH YEAR] QUARTERLY PROGRESS MEETING

LOOKING BACK: LEARNING FROM THE LAST TWO YEARS

NOTE: Answer the following questions three months before your QPM.

NOTE: Materials needed include your Current Logic & Action Plan/Work Plan

NOTE: In preparation for Step 3, review the actions in your current Logic & Action Plan and highlight each as Green/Yellow/Red according to its status. Next complete the “Looking Back: Learning from the Last Two Years” section below. It is recommended that you provide your responses to the Looking Back questions and the G/Y/R activity to STAC/STAR representatives prior to your meeting with them. This background material will inform the conversations that take place in STEP 3 (strongly recommended).

Quarterly Progress Meeting (QPM) Presentation

Helps consolidate information from our Outcome Review Summary and highlights any “asks” to the Management Board.

Our QPM is scheduled for
Thursday, June 13, 2024.

QUARTERLY PROGRESS MEETING – March 2023

Chesapeake Bay Program



Land Use Methods and Metrics

*Peter Claggett,
U.S. Geological Survey
Land Use Workgroup Coordinator*

Work Plan

Illustrates the link between the factors that could impact the partnership's ability to achieve our outcome and the actions needed to manage them.

LUMM & LUOE share a workplan.

(INSERT OUTCOME NAME)
SRS 4TH CYCLE: (INSERT APPROPRIATE 2-YR PERIOD) WORK PLAN

OUTCOME:

NOTE: Above, copy the outcome language from the 2014 Watershed Agreement. Example: By 2025, add 300 new public access sites, with a strong emphasis on providing opportunities for boating, swimming and fishing, where feasible.

Long-term Target:

NOTE: Above, write the metric for success of Outcome. Example: 300 new public access sites by 2025

Two-year Target:

NOTE: Above, write the increment of metric for success. Example: The Public Access Workgroup has set an internal target, called a milestone, of 20 new public access sites annually. This internal milestone is intended to establish a system for tracking progress relative to regular increments of the long-term outcome of 300 new sites and is not meant to be a target itself.

MANAGEMENT APPROACH 1: (Insert management approach)				
Action #	Description of Step	Responsible Party or Parties	Geographic Location	Expected Timeline
	How do we expect the action to fill the priority factor or gap? What do you expect to happen when the action is completed?	What are the goals or metrics you will use to determine the impact of your action?	How will we collect and assess the data that we want to monitor and how will we use the data?	How will we communicate the results?

Management Strategy (MS)



Land Use Methods & Metrics
Development and Land Use Options
Evaluation Combined Outcome
Management Strategy

2015–2025, v.3



Photo by Will Parson / Chesapeake Bay Program

I. Introduction

To minimize the extent and mitigate the negative effects of land conversion to development, local decision-makers and the land conservation community need to be informed about: 1) land use and land cover changes that affect stream and watershed health, wildlife, and human communities; and 2) policy options, incentives, and tools that reduce the rate and magnitude of land conversion. This

LUMM & LUOE share a
Management Strategy.

UPDATED SRS PROCESS (2024 – 2025)

Revised 9/18/23



RECOMMENDATIONS FOR QPM UPDATE OPTIONS

Full Update

- 30-45 minutes total
 - 15-minute update or presentation, including introduction of any MB request or decision
 - 15-minute Q&A or discussion with MB
 - Optional: 15-minute “ask” or problem-solving/ brainstorming discussion
 - Discussion of request, problem, or decision
 - Identification & agreement on follow-up actions

Brief Update

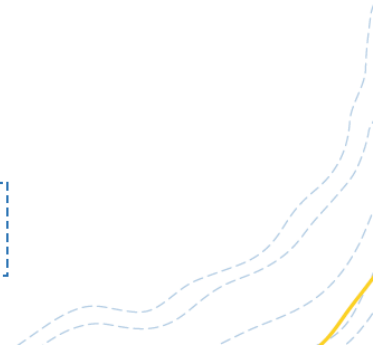
- 15 minutes total
 - 5-minute update or presentation
 - 10-minute Q&A or discussion with MB

Pass

- Don't provide a QPM update to the MB

Note: These times are recommendations only. Contact the SRS Coordinator to customize the QPM update to meet the needs of your workgroup/action team.

MB = Management Board
QPM = Quarterly Progress Meeting



Acknowledgements

- Photos – taken by Will Parson, Alliance for the Chesapeake Bay
 - CBP Flickr Account
- Slides - adapted from Healthy Watersheds SRS Overview presentation developed by Sophie Waterman, HWGIT Staffer



Thank you!

Any questions?

You can contact me at
pickford.jacqueline@epa.gov



Chesapeake Bay Program

Science. Restoration. Partnership.