

2023 Local Government Forum

11/30/2023



Welcome to the Local Government Forum

Hi! I'm Joy
Jackson, *Senior
Associate* with
the Institute
Conservation
Leadership





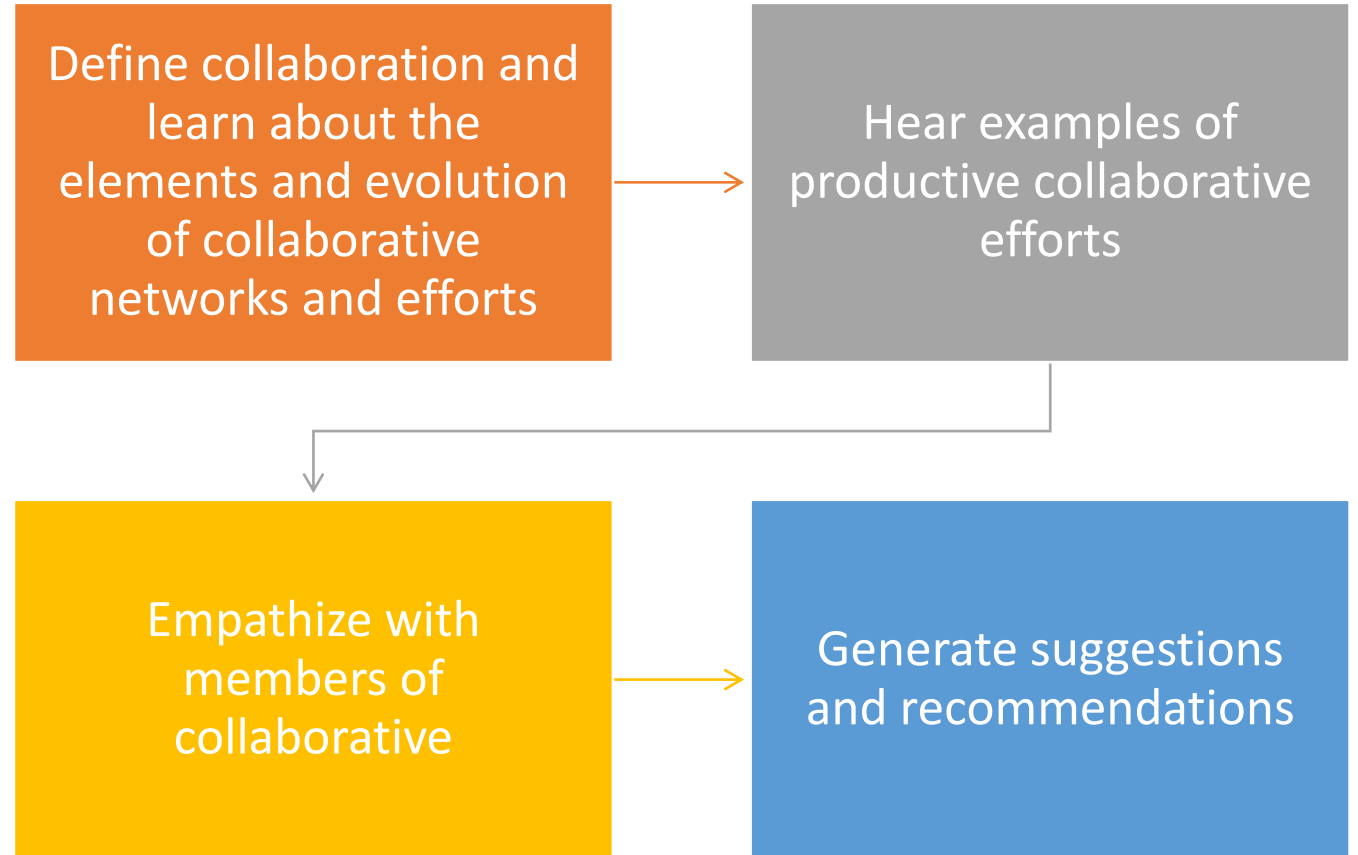
Central Question

How might local governments support local collaborative efforts, with an eye towards connection and accessing federal funding?



Process for
the day

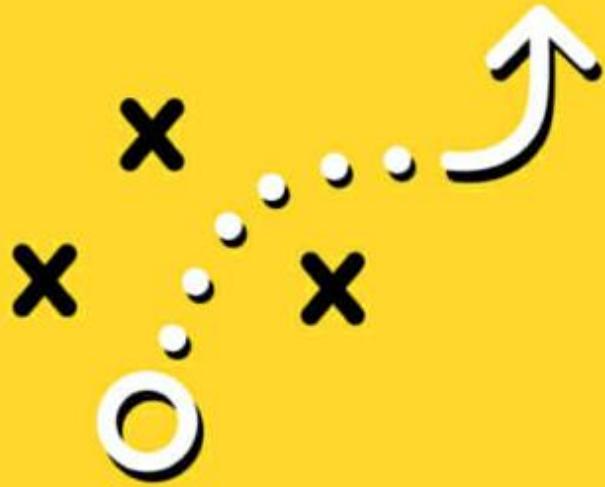
Our process for today



Meeting Interactive Times

- Interactive activities will take place at these times:
- 10:15 AM – 11:00 AM
- 1:15 PM – 3:30 PM





RULES OF ENGAGEMENT

Privacy
Participation
Patience

A close-up photograph of several people's hands and forearms stacked together in a circular formation, creating a sense of unity and teamwork. The hands are of various skin tones, and some are wearing rings or watches. The background is dark and out of focus. The text "Let's get to know one another!" is overlaid in white, centered on the image.

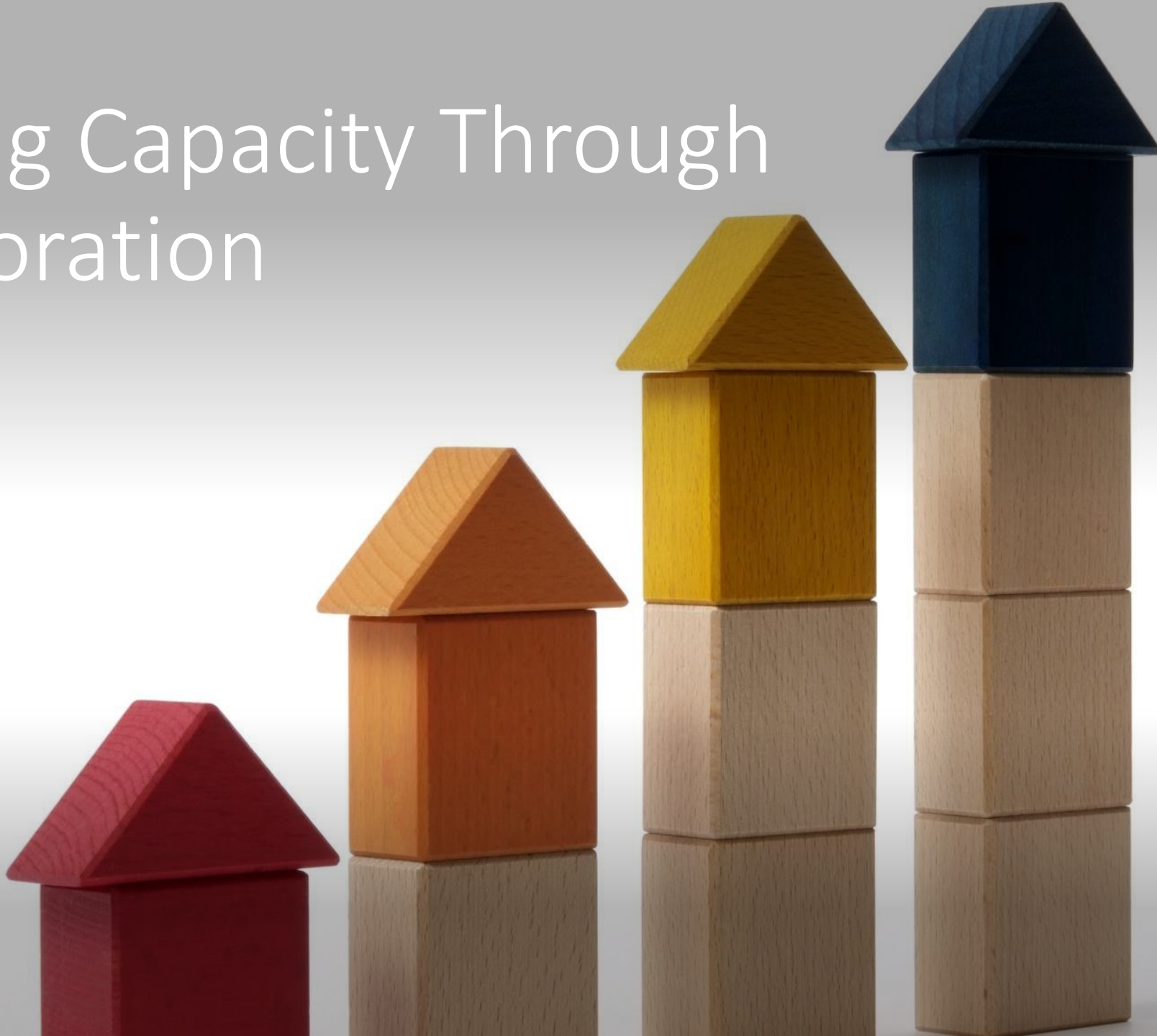
Let's get to know one
another!



Who's in the
room?



Building Capacity Through Collaboration

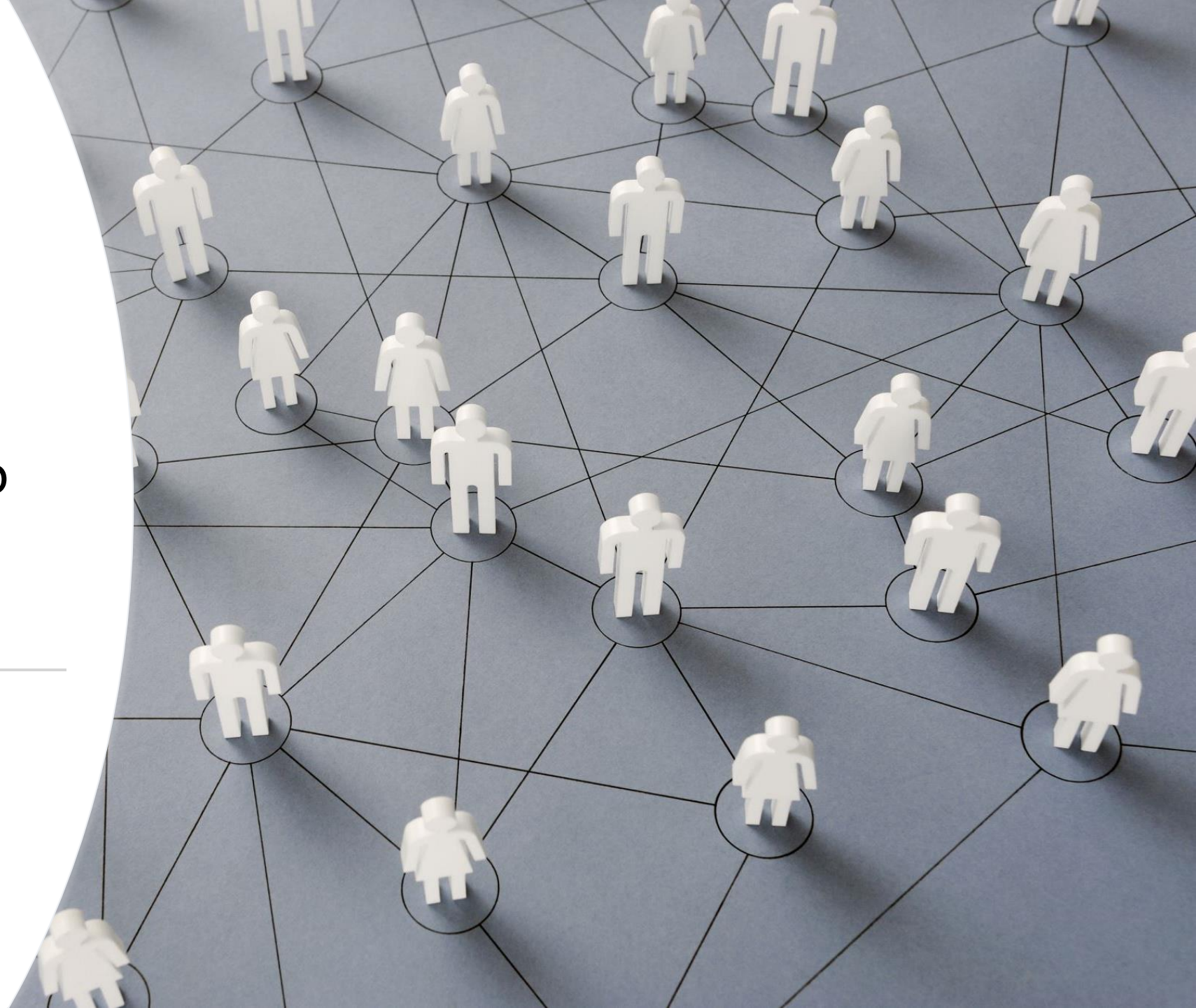


Let's spend
some time on
definitions





What is a Collaboration*?



What is a Network or Collaboration*?

A **collaboration** consists of organizations and people that are largely autonomous, geographically distributed, and heterogeneous in terms of their operating environment, culture, social capital and goals, but that **come together** to better achieve common or compatible goals.

*Note: Collaboration is shorthand for structures that include coalitions, collective action entities, networks and other types of similar groupings

A word about collective action . . .

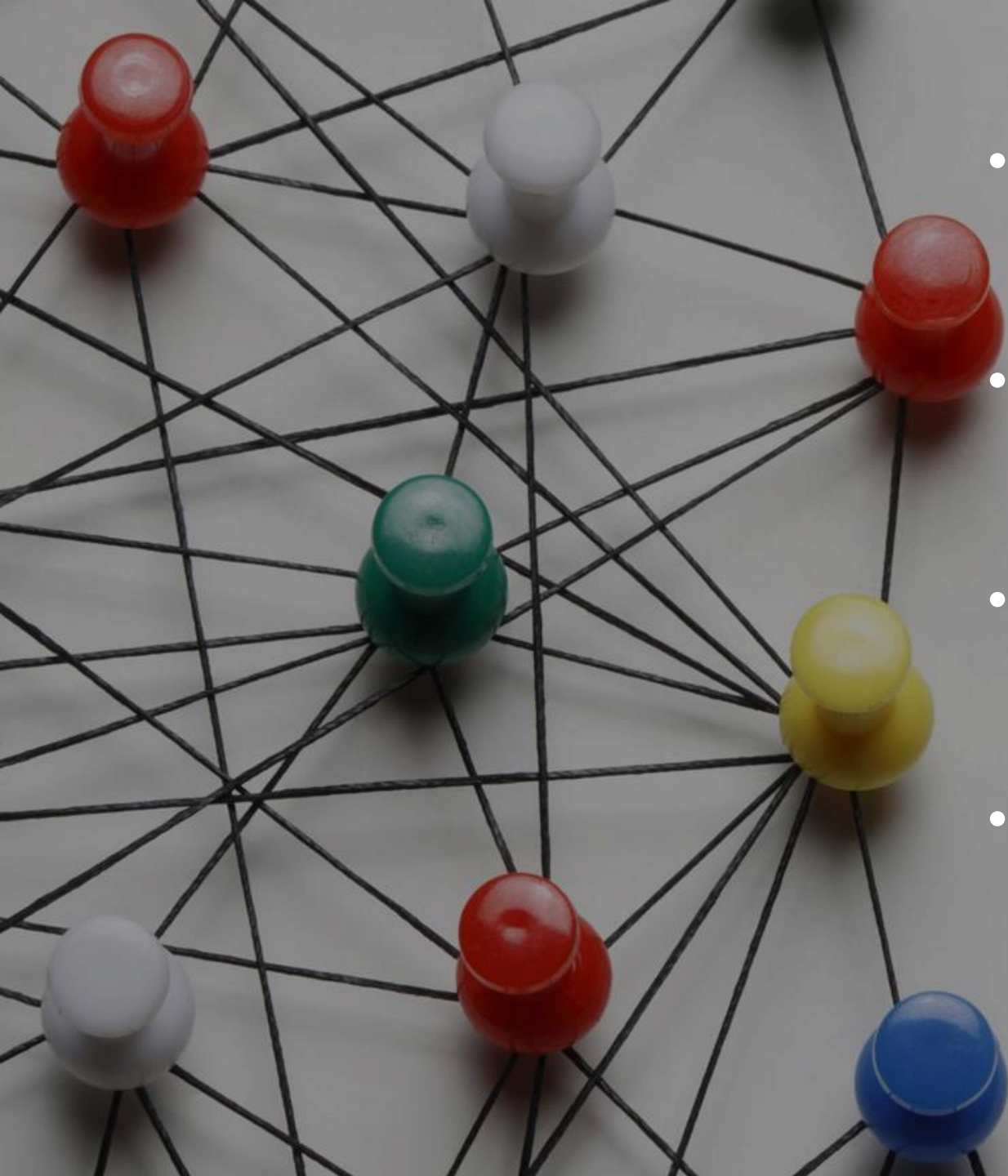
Collaborative Action and Collective Impact



The background of the slide features a dark gray network diagram. It consists of numerous light gray human figures, each standing on a small circular base. These figures are interconnected by a web of thin, light gray lines, creating a complex, interconnected pattern that symbolizes collaboration and communication. In the top-left corner, there is a solid orange horizontal bar.

Creating Value for Collaborative Members

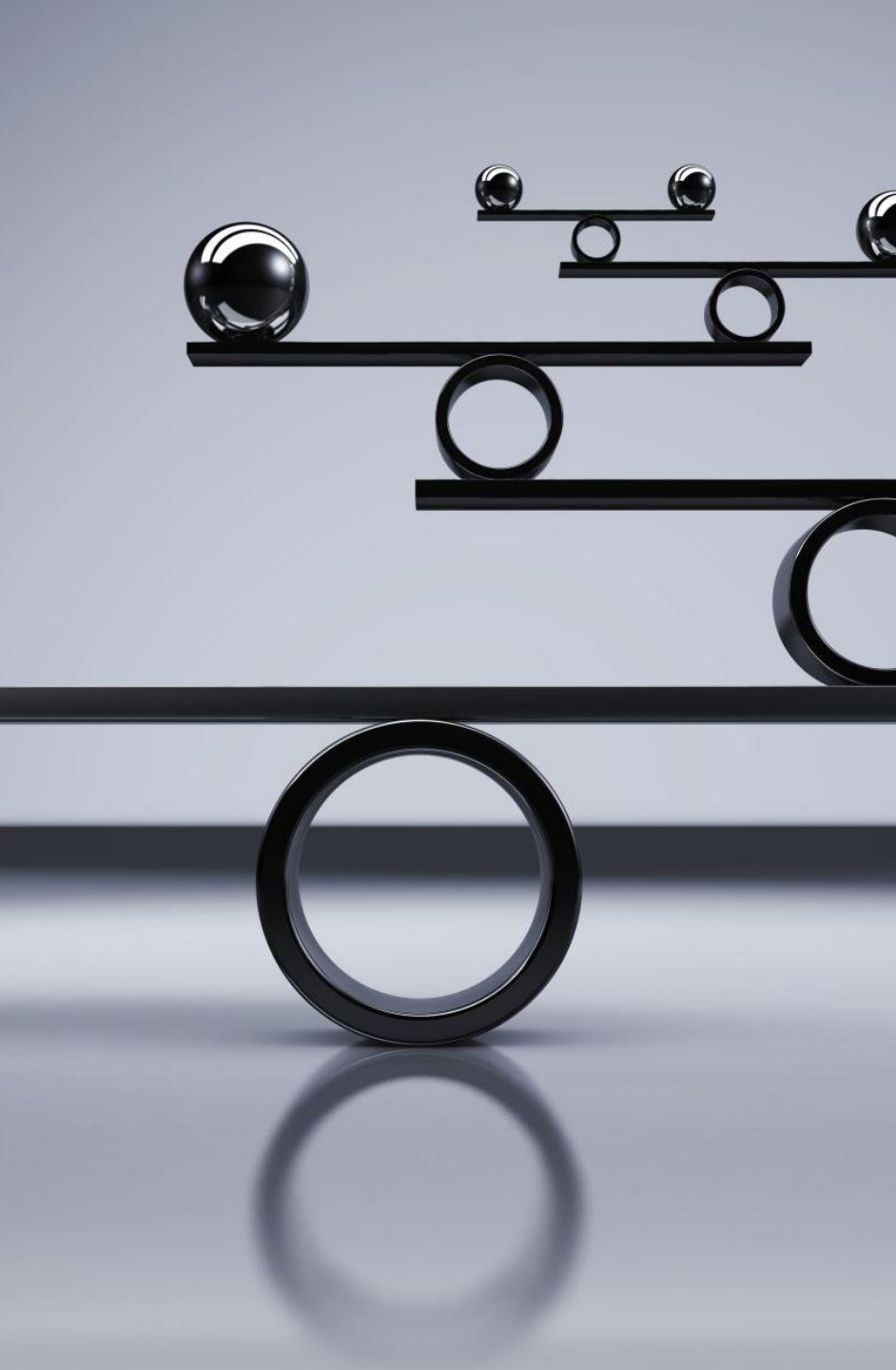
- In a collaboration, members can exchange four kinds of tangible value:
 - connections
 - knowledge
 - competencies
 - resources



- Connections - Can you connect others in the network to people that may be able and willing to help them?
- Knowledge - Do you know something that may be valuable to others in the network?
- Competencies - Are you able to do something that may be of value to others in the network?
- Resources - Do you have access to funds or other resources that may be useful to others in the network?

The background image shows three red location pins of varying sizes on a dark, textured surface that resembles a road. A dashed white line curves through the scene, passing behind the central pin. The background is a soft-focus sky with light blue and white tones. The text 'Where to start? Supporting the Elements of Collaboration' is overlaid in white, sans-serif font. Below the text is a solid orange horizontal bar.

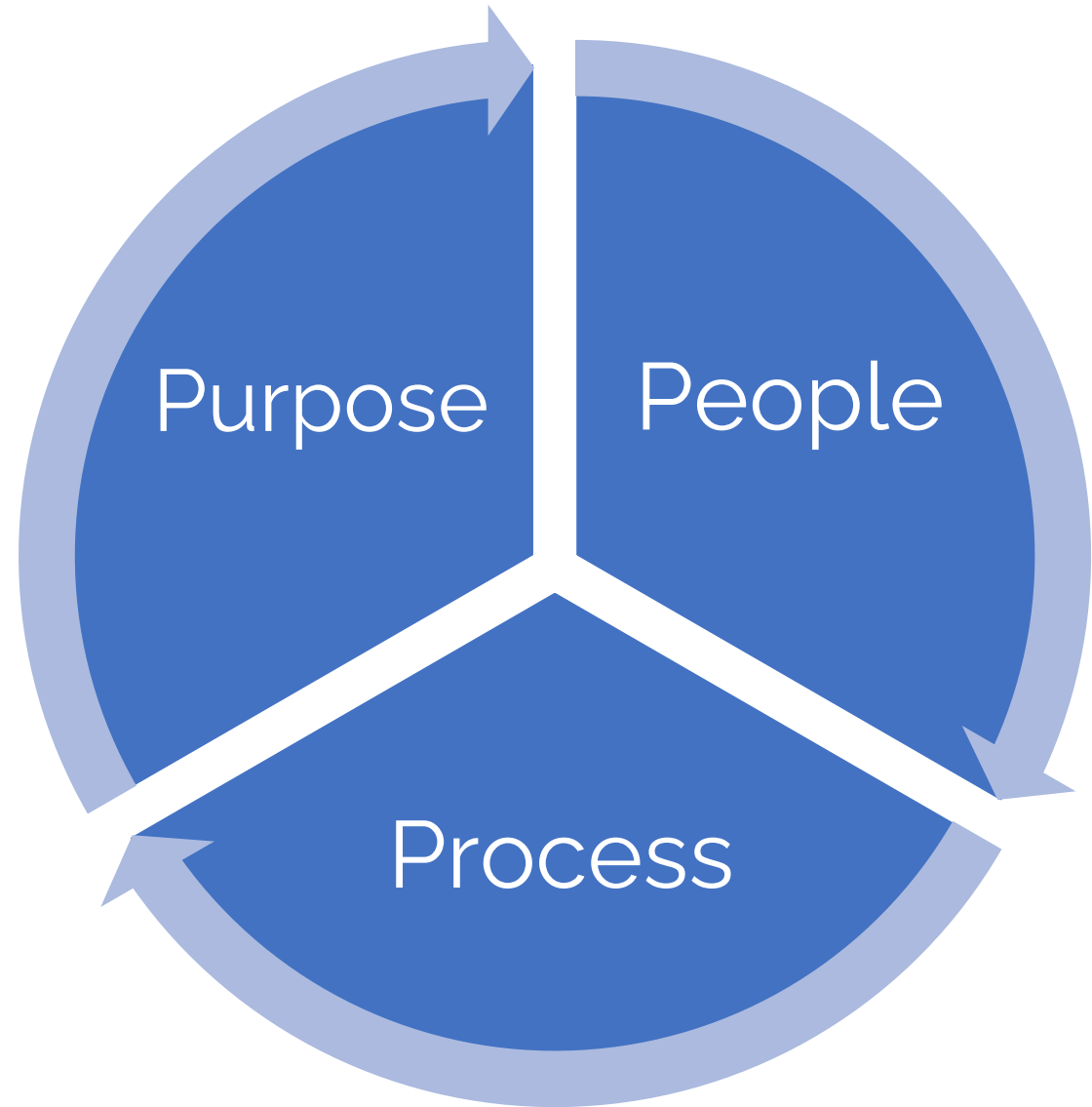
Where to start? Supporting
the Elements of Collaboration



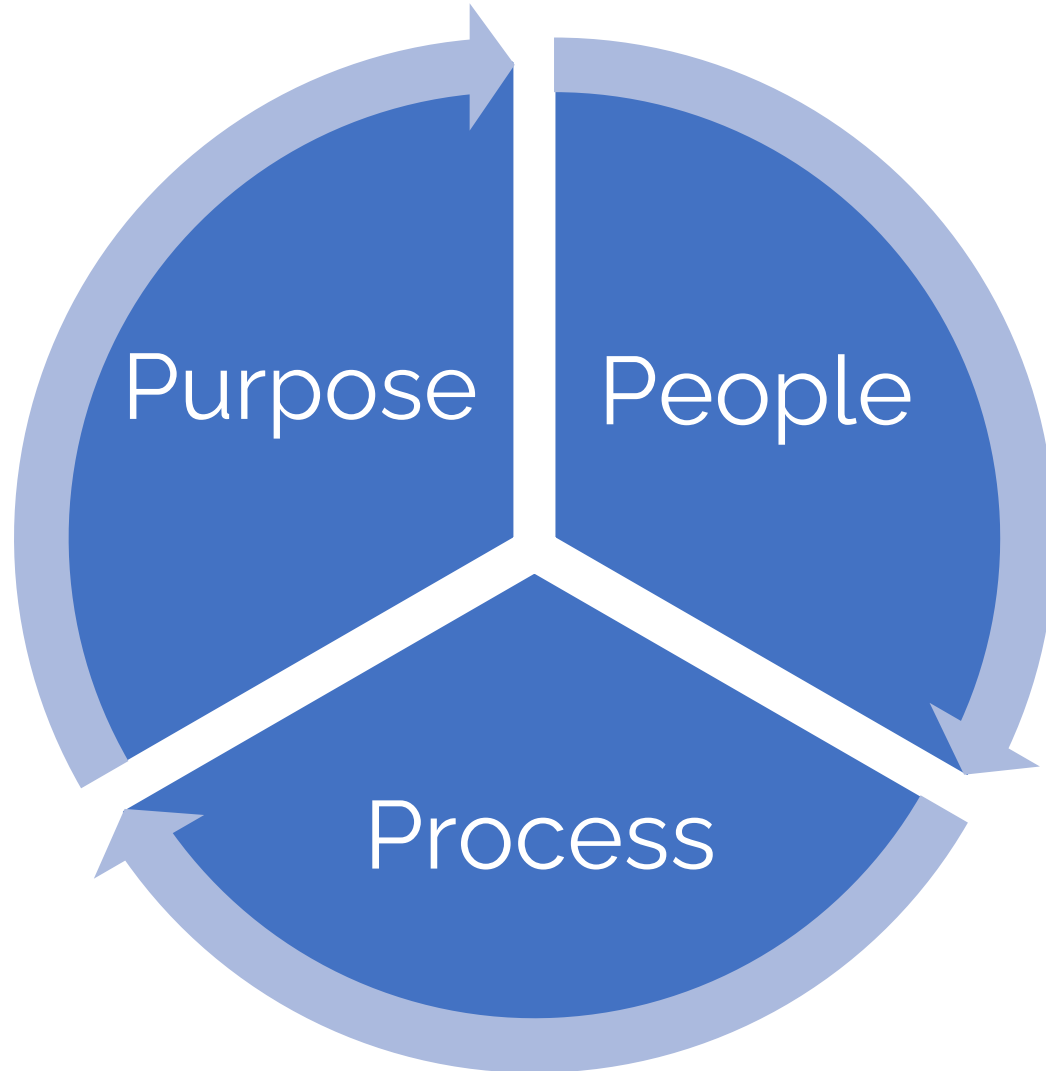
Effective Collaborations/Networks

- Balance the elements of a collaboration and helping to support that collaboration through its stages of development.

Elements of
Collaboration: Purpose,
People, Process

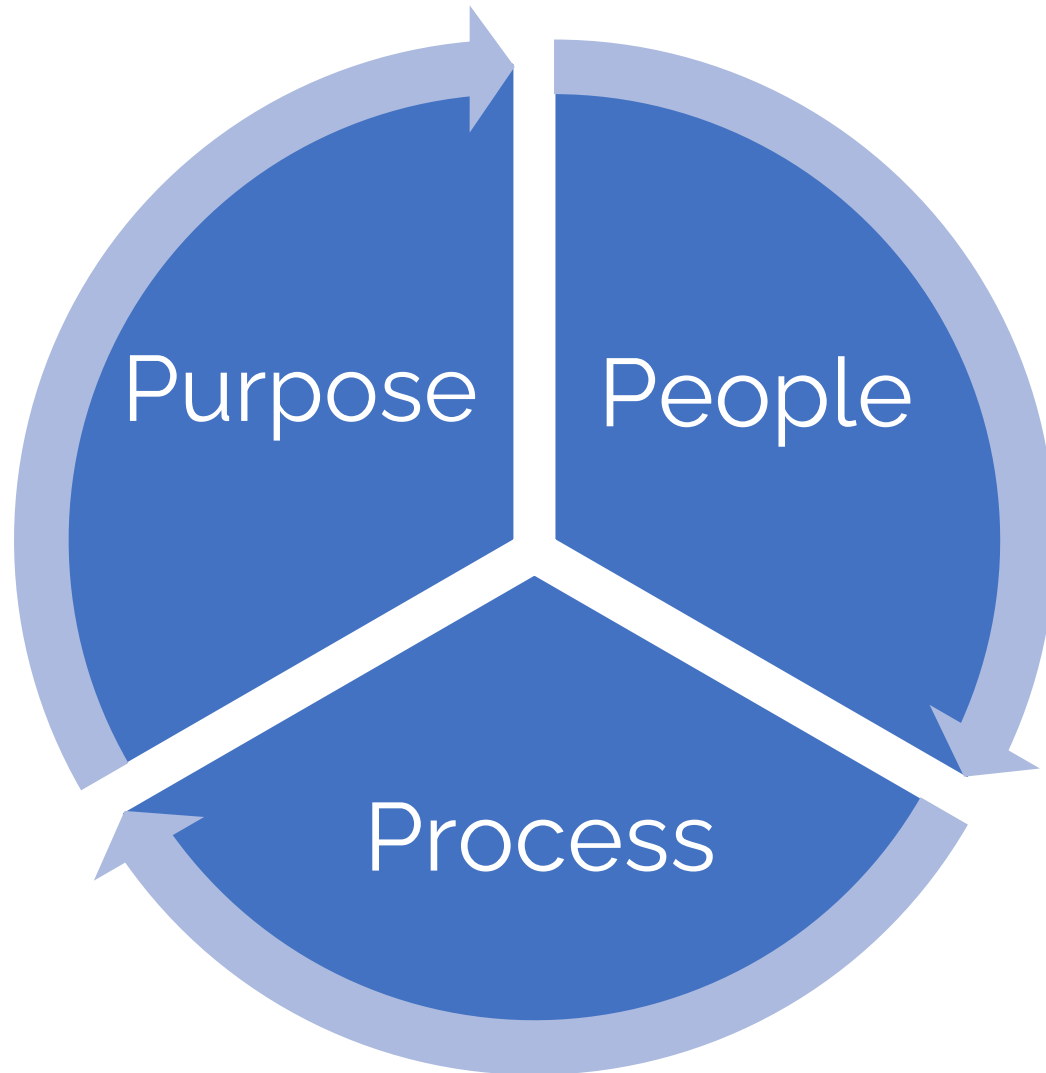


Purpose, People, Process



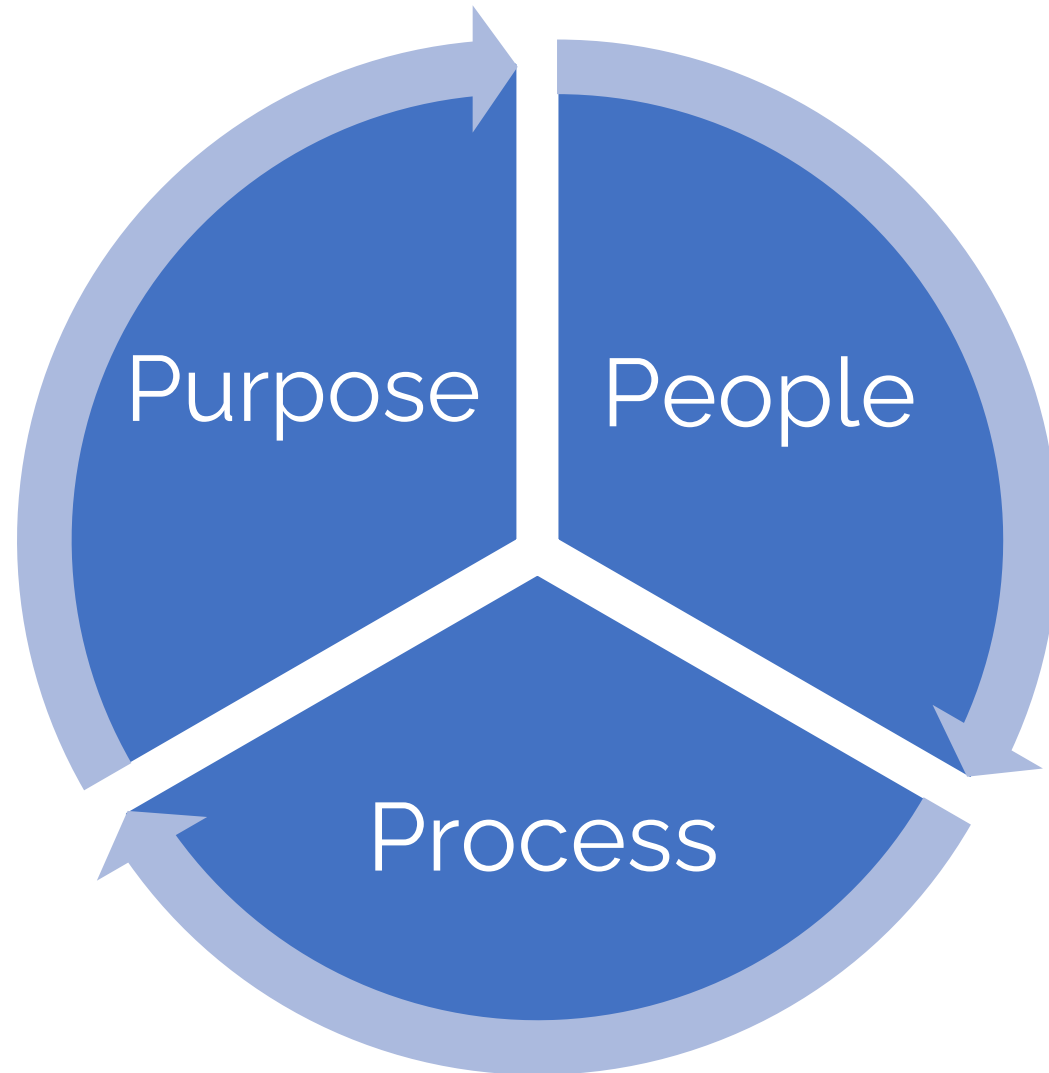
- **Purpose and Goals:** Grounding in a vision and direction that keeps work on course.

Purpose, People, Process



- **Purpose and Goals:** Grounding in a vision and direction that keeps work on course.
- **People:** The who and why of participation in the network. How create trust?

Purpose, People, Process



- **Purpose and Goals:** Grounding in a vision and direction that keeps work on course.
- **People:** The who and why of participation in the network. How create trust?
- **Process:** How to best organize ways to stay connected, act and influence what is important, and make decisions



How Collaborations Evolve



Network Evolution

Connection

Alignment

Production



Network Evolution

→ Connection →		
<ul style="list-style-type: none">▪ Forming links between people and entities▪ Emphasis on sharing information, knowledge and resources▪ Improves communication – share more deeply and free form		

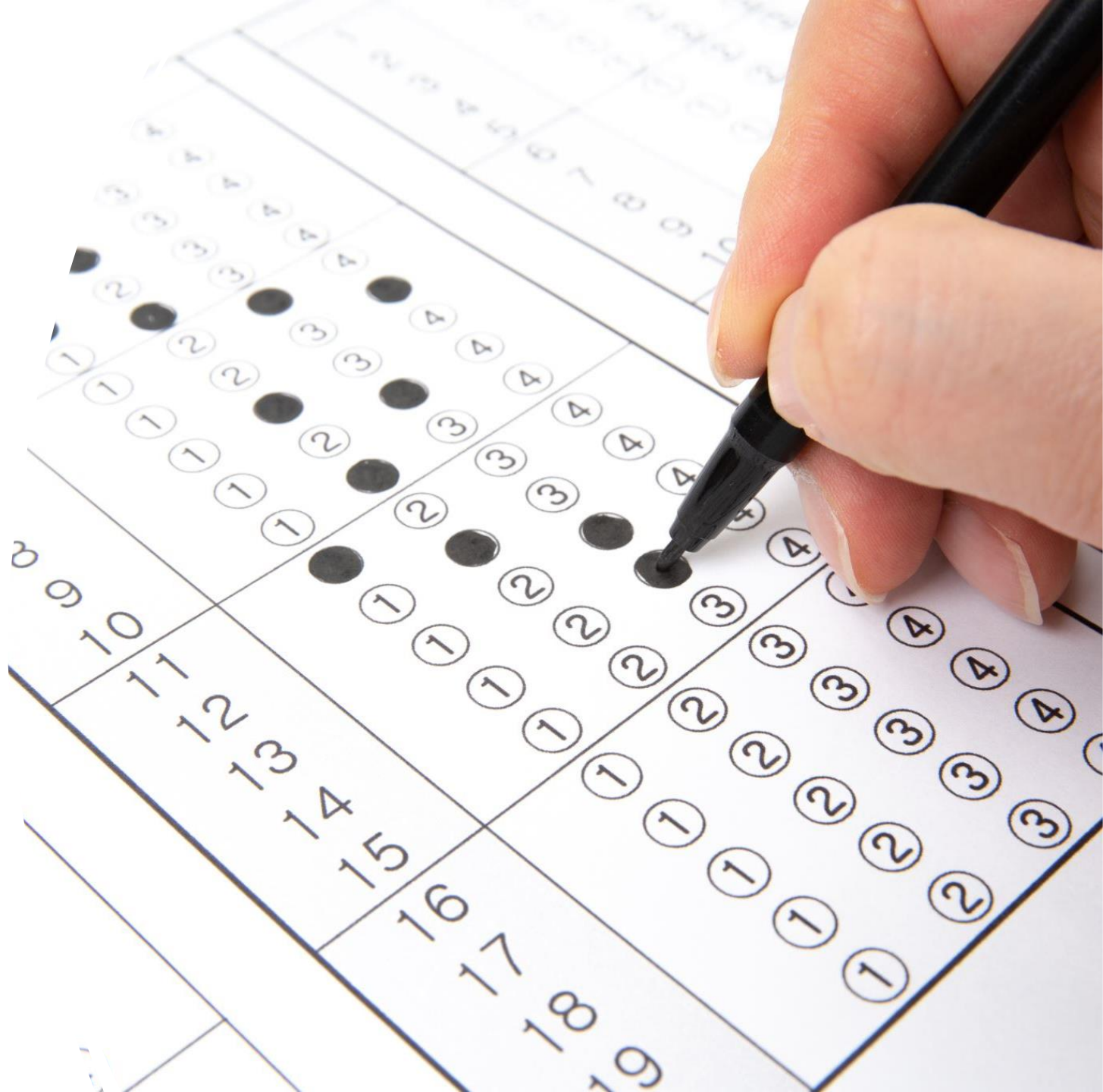
Network Evolution

→ Connection →	→ Alignment →	
<ul style="list-style-type: none">▪ Forming links between people and entities▪ Emphasis on sharing information, knowledge and resources▪ Improves communication – share more deeply and free form	<ul style="list-style-type: none">▪ Create and spread a collective value proposition or shared reason for being together▪ Share set of ideas, language, standards, and identity▪ Participation influences entities in network	

Network Evolution

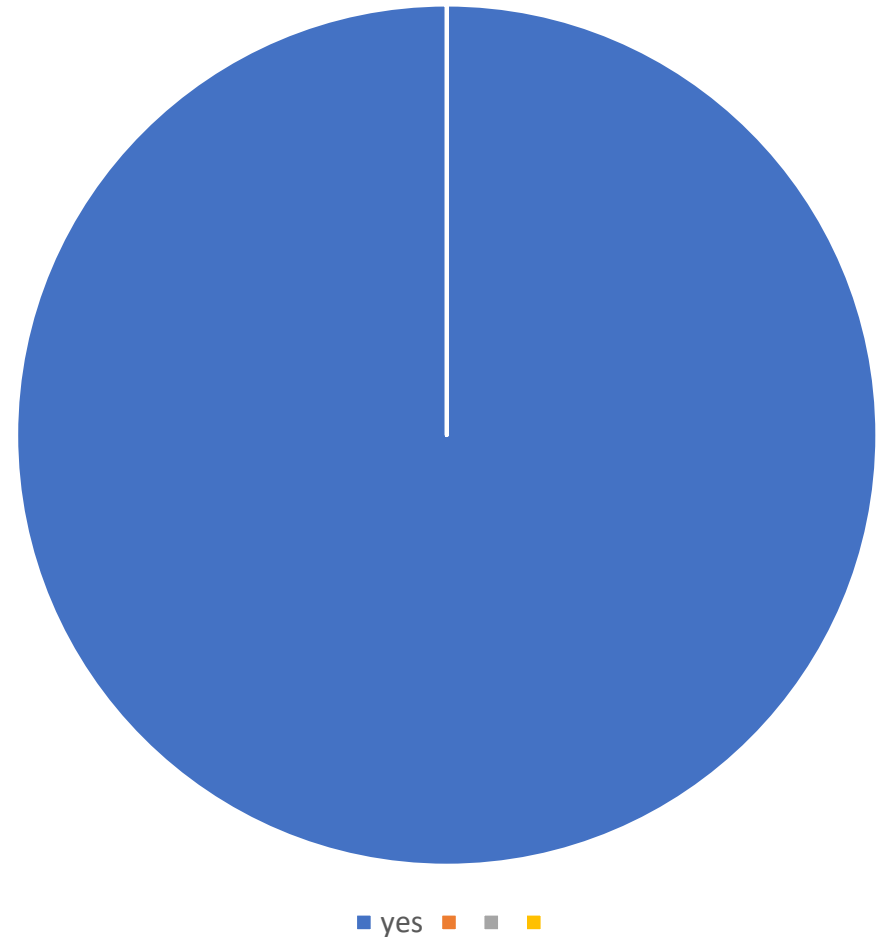
→ Connection →	→ Alignment →	→ Production
<ul style="list-style-type: none">▪ Forming links between people and entities▪ Emphasis on sharing information, knowledge and resources▪ Improves communication – share more deeply and free form	<ul style="list-style-type: none">▪ Create and spread a collective value proposition or shared reason for being together▪ Share set of ideas, language, standards, and identity▪ Participation influences entities in network	<ul style="list-style-type: none">▪ Fosters joint action through full network or subgroups▪ Produce outcomes can't do alone▪ Requires structure and capacity for planning and maintaining clear agreements and for coordinating work.

Survey Results

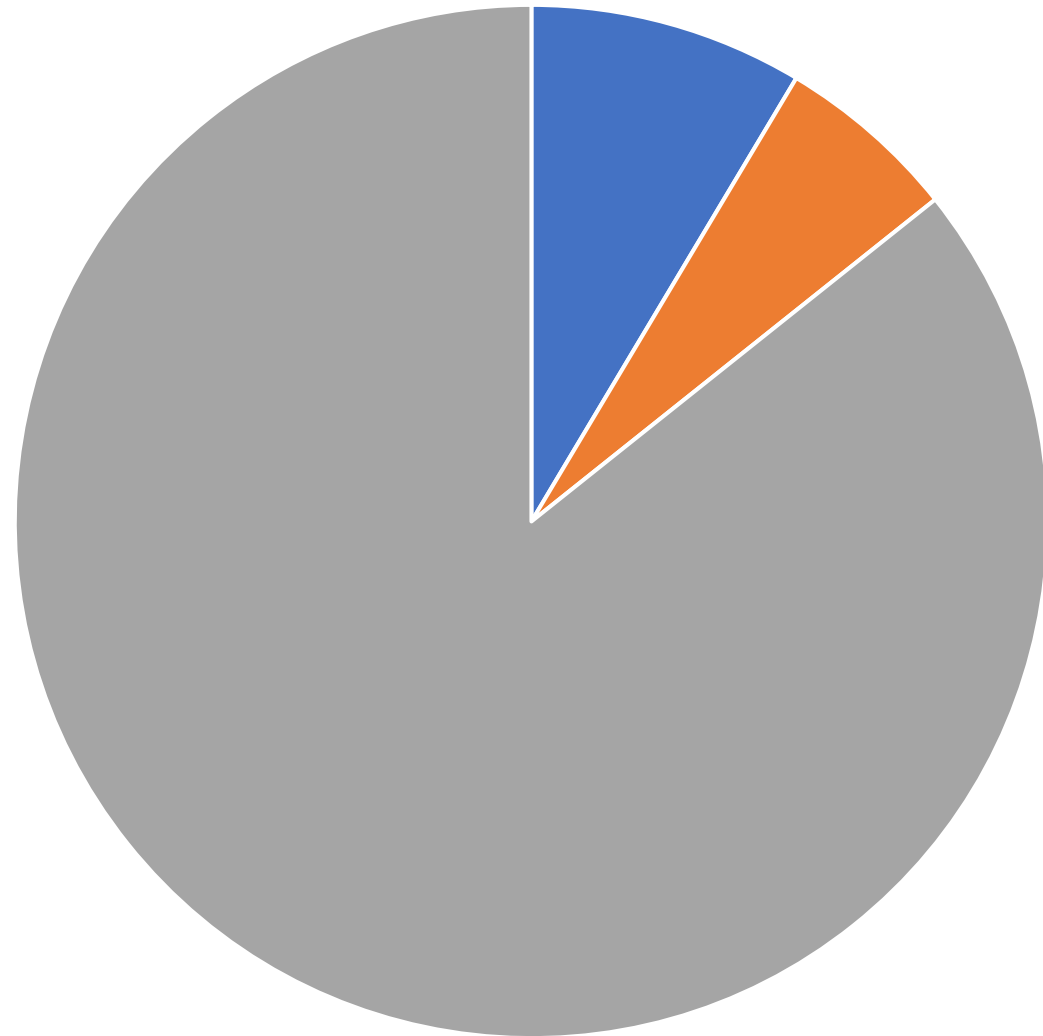


My group regularly collaborates with other groups in the region

- 100% said yes



My organization is interested in federal funding opportunities like the Inflation Reduction Act and others.



■ Don't know ■ No ■ Yes

Based on your experience or knowledge, what are the most common barriers for building capacity through collaboration?

Lack of staff = 24

Not sure where to start = 13

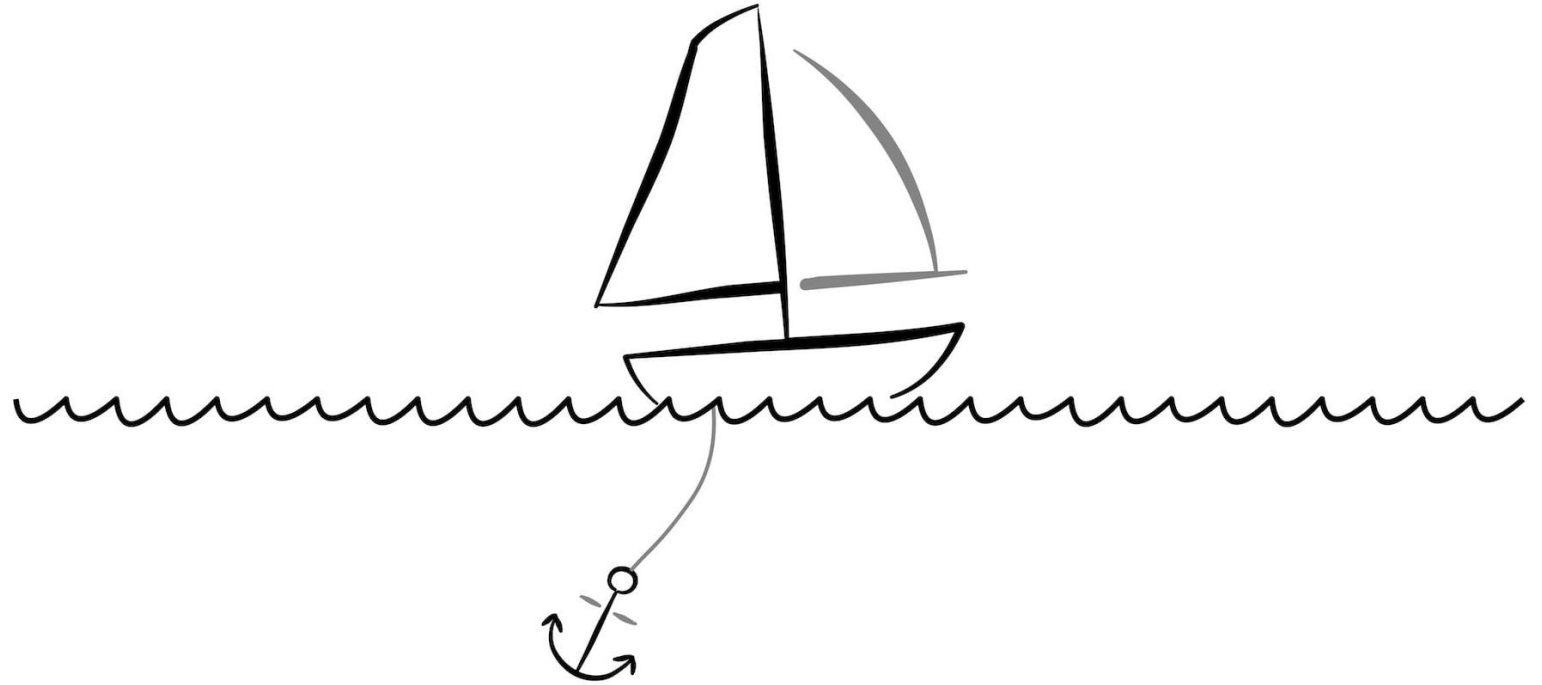
Unwillingness to work together = 3

“Other”



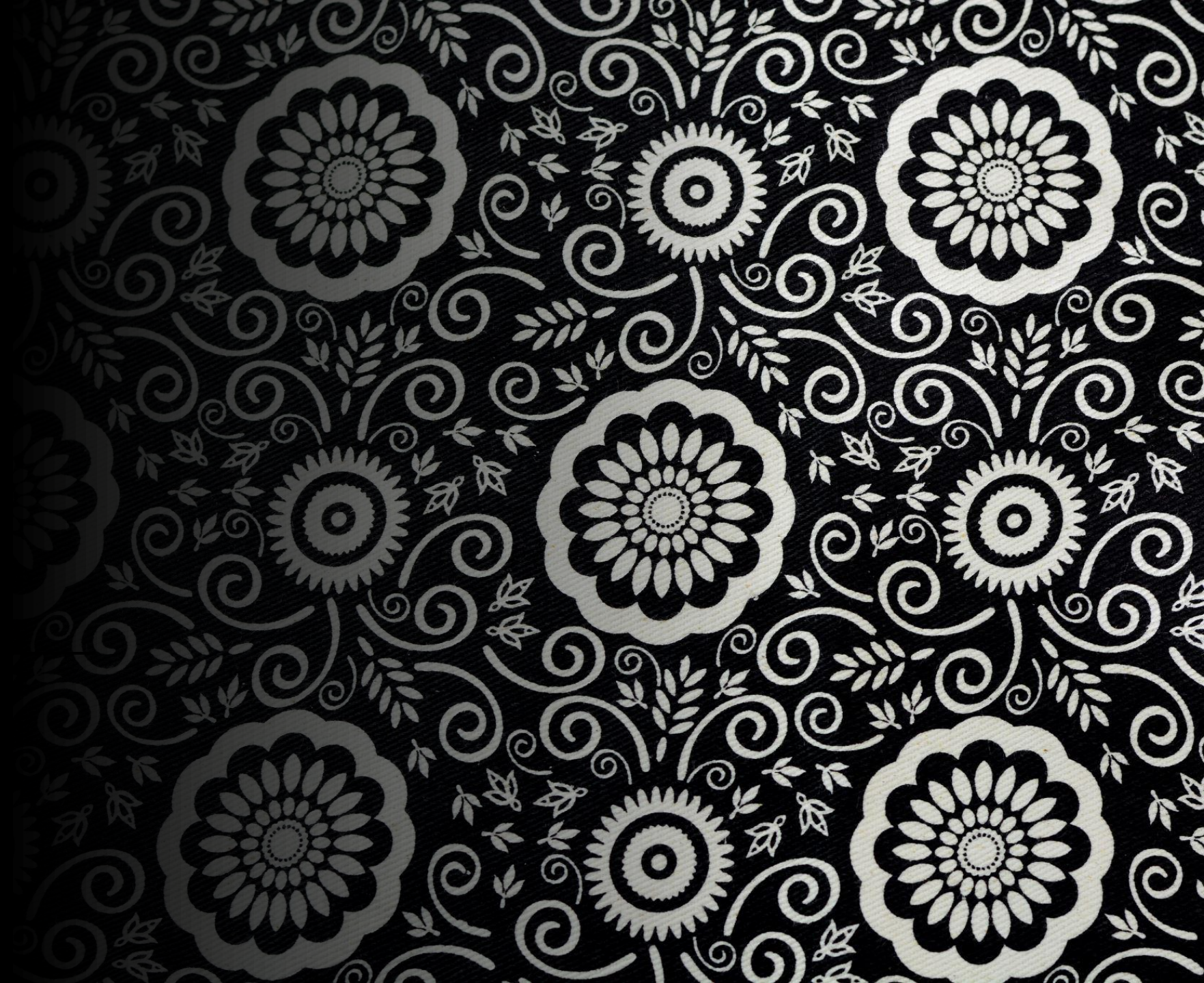
Activity

Activity: What's
propelling
collaborations
forward?
What's holding
them back?






Debrief





Break





Importance of collaboration in this
time of IRA

The carrot of collaboration is the opportunity to pursue federal dollars.





Welcome our Speakers

- Christina Bonini, Greening Greater Fulton
- Jon Knorr, Lancaster Clean Water Partners

Lunch



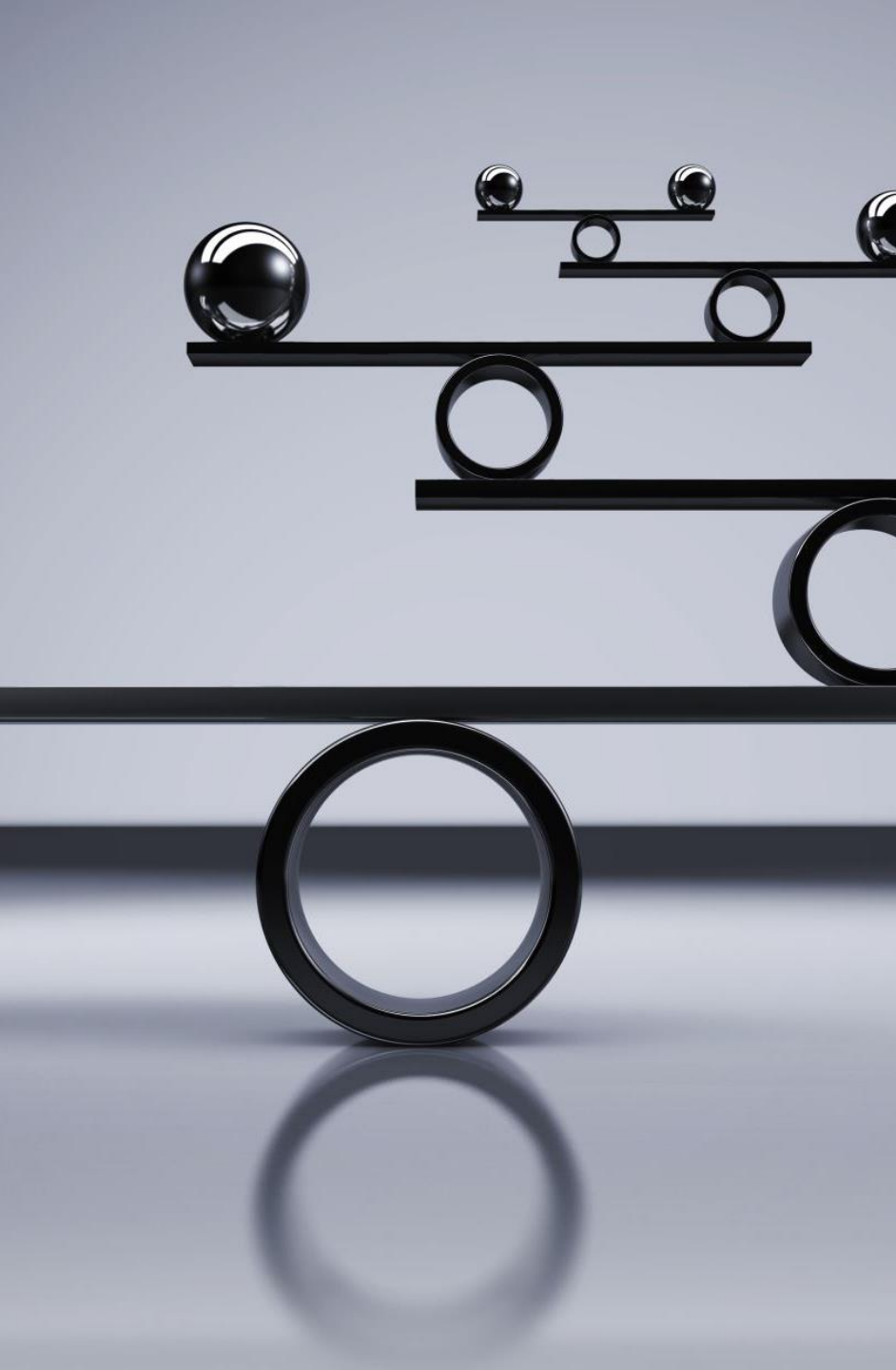
A stack of three books is positioned on the right side of a light-colored wooden table. The books have white, dark brown, and white covers. A warm, golden light source from the upper left creates a soft, out-of-focus glow across the scene, with a thin beam of light passing over the books. The text "Recap this morning" is centered in the middle of the image in a white, sans-serif font.

Recap this morning



Central Question

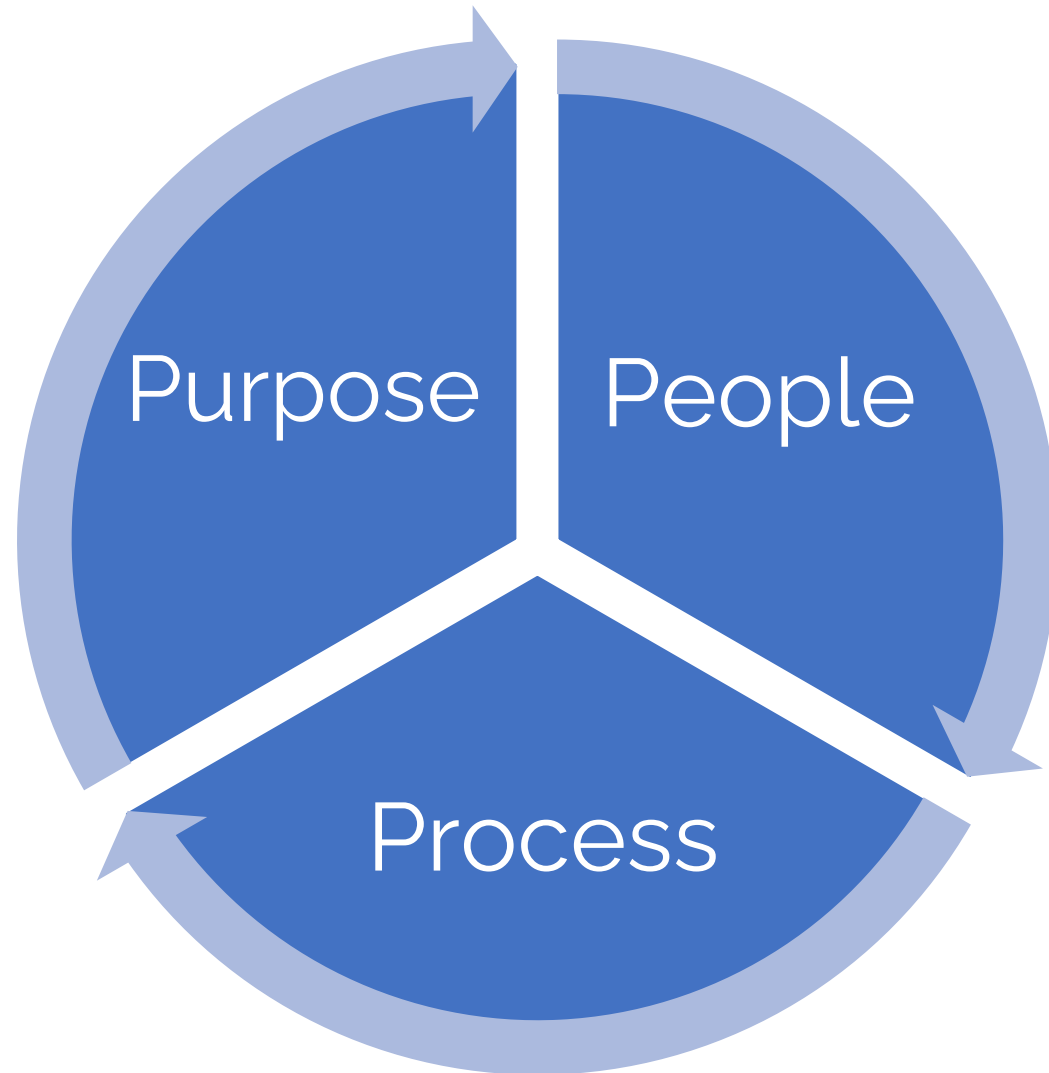
How might local governments support local collaborative efforts, with an eye towards connection and accessing federal funding?



Effective Collaborations/Networks

- Balance the elements of a collaboration and helping to support that collaboration through its stages of development.

Purpose, People, Process



- **Purpose and Goals:** Grounding in a vision and direction that keeps work on course.
- **People:** The who and why of participation in the network. How create trust?
- **Process:** How to best organize ways to stay connected, act and influence what is important, and make decisions

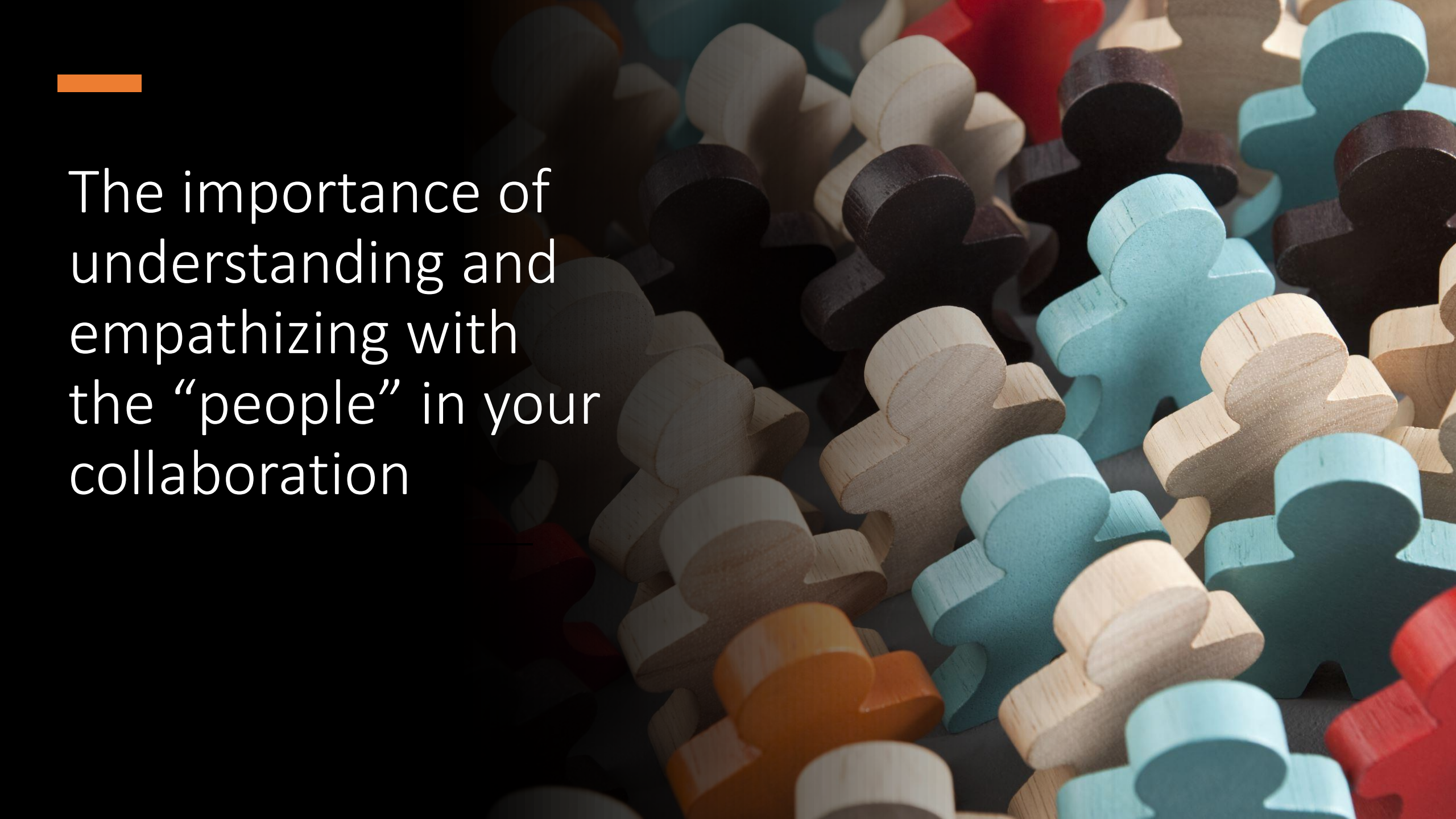
Network Evolution

Connection

Alignment

Production





The importance of
understanding and
empathizing with
the “people” in your
collaboration

An illustration featuring two large speech bubbles. The left bubble is white and contains the word 'WE' in large, 3D orange letters with green outlines. The right bubble is red and contains the letter 'I' in large, 3D white letters with green outlines. Below the speech bubbles is a silhouette of a crowd of people. The background is a dark, textured grey.

WE

I

Common tension in collaboration

A large orange circle on the left side of the slide, partially cut off by the edge.

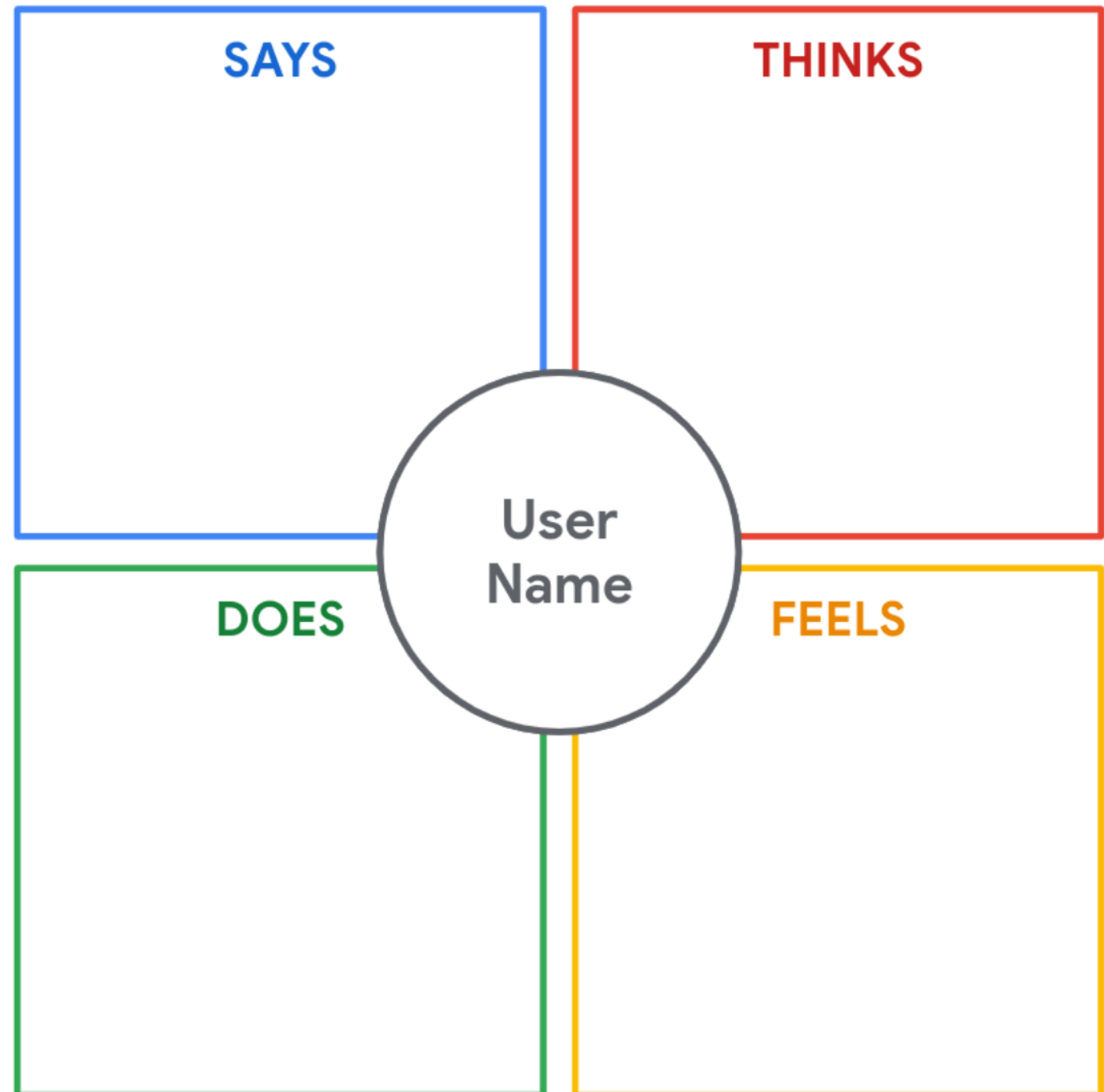
Why it's important to empathize

- Creating an effective solution requires understanding the true problem and the person/people experiencing it.



Let's practice empathizing through empathy mapping

- Mapping experiences helps participants consider things from the various perspectives of stakeholders/potential collaborators along with his or her goals and challenges.



A cluster of interlocking white gears is positioned on the left side of the image, set against a dark blue, textured background. The gears are of various sizes and are arranged in a way that suggests a mechanical system. The lighting is soft, highlighting the teeth of the gears and casting subtle shadows. The text "How does it work?" is centered in the middle of the image, written in a clean, white, sans-serif font.

How does it work?

A top-down view of a red bowl filled with white popcorn, sitting on a dark wooden surface. Several popcorn kernels are scattered around the bowl. A black remote control with various buttons like 'VOL', 'CH', 'MENU', and 'INFO' is positioned diagonally to the right of the bowl. The text 'Example: The experience of buying a new tv' is overlaid in white, with a thin white line underlining the word 'experience'.

Example: The experience
of buying a new tv

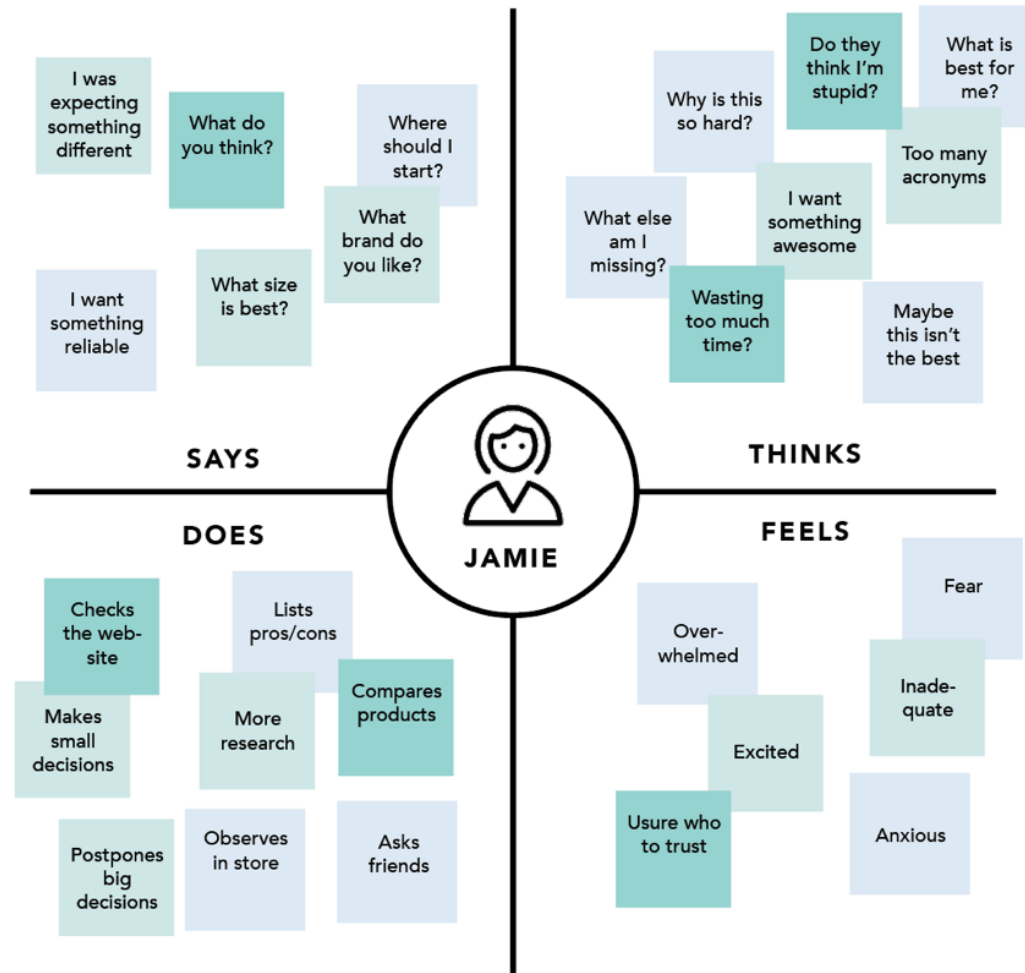
Buying a new tv

- Best buy would like to learn more about the experiences of shoppers on Cyber Monday.
- I'm interested in buying a new television on Cyber Monday. But before I purchase it, I visit my local best buy to ask key questions before I make my purchase.
- What is my experience like?



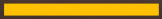
Example:

EMPATHY MAP *Example (Buying a TV)*

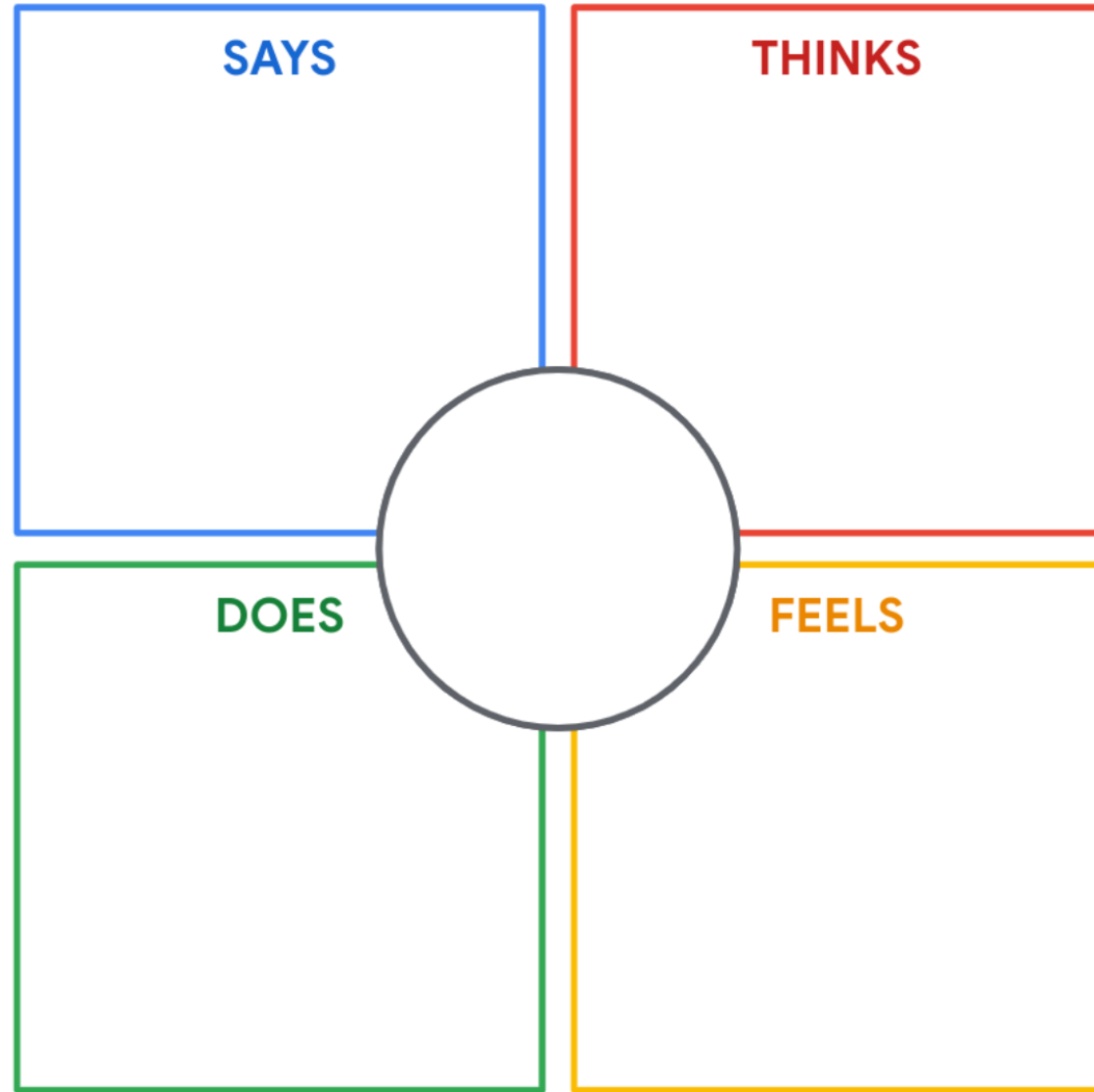


NNGROUP.COM **NN/g**

Activity – Let's explore the experiences and perceptions of various stakeholders

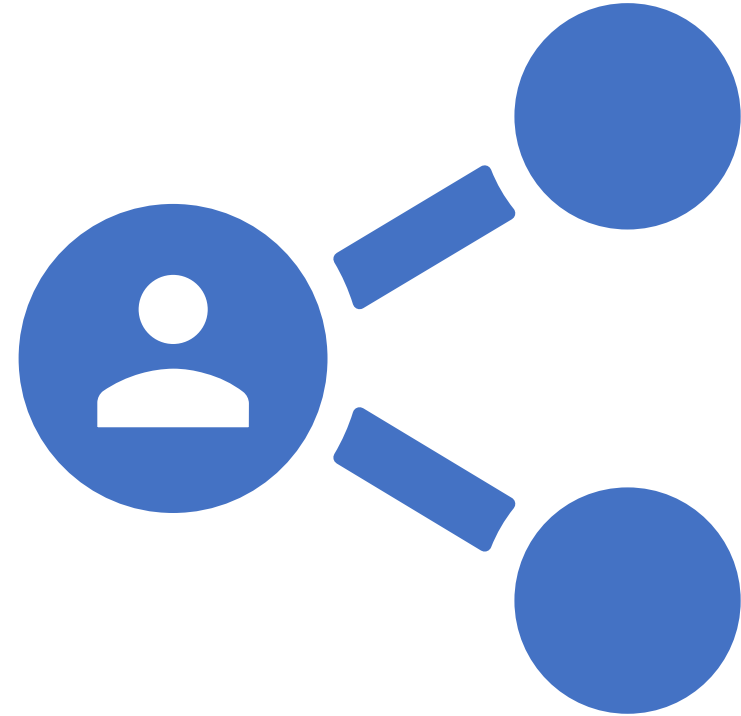


Empathy Mapping Activity





Scenario: Regional River Collaborative

- Your organization is a member of a local collaborative. At the most recent meeting, one of the attending entities shares that they've heard about funding that is becoming available to support water related issues in the community – the Inflation Reduction Act Community Change Grants Program.





- EPA's new Environmental and Climate Justice Community Change Grants program (Community Change Grants) will invest approximately \$2 billion dollars in Inflation Reduction Act funds in environmental and climate justice activities to benefit disadvantaged communities through projects that reduce pollution, increase community climate resilience, and build community capacity to respond to environmental and climate justice challenges.
- These place-based investments will be focused on community-driven initiatives to be responsive to community and stakeholder input.



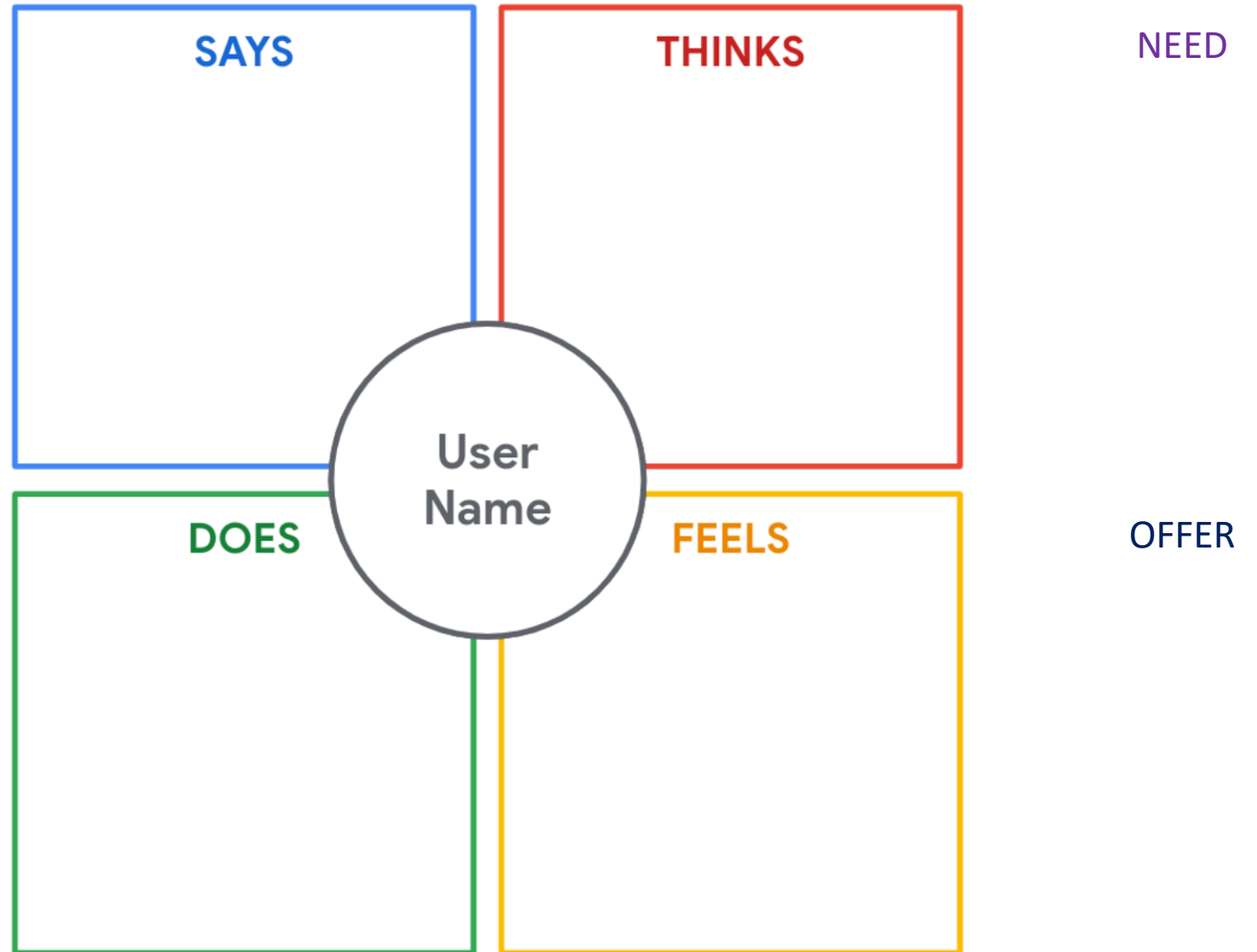
Inflation Reduction Act Community Change Grants Program - Eligibility

- A partnership between at least two community-based non-profit organizations (CBOs).
- A partnership between a CBO and one or any combination of the following:
 - a Federally-Recognized Tribe
 - a local government
 - an institution of higher education.

We want to get a deeper sense of how a variety of groups perceive, respond to, and react to hearing such news.



Empathy map activity



Proposed Grouping -



Federal government,
funders, field liaisons



Local government
staff and cog staff



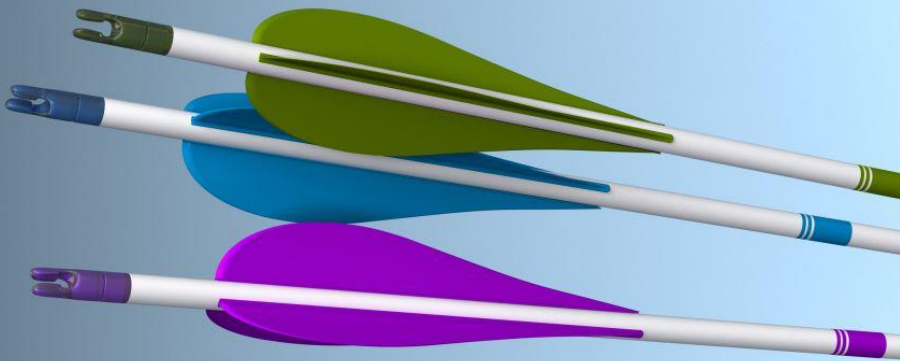
Local elected officials



Environmental non-
profits

Tips

- Don't get hung up on what goes where
- Only explore what matters about the user's perceptions related to the project goal.





Gallery Walk

- Paying special attention to the “need” and “offer” areas, what stands out? What surprises you? What does anything make you think differently about how you would approach collaboration with each entity?”



Debrief
Empathy

Break




How might we address
our anchors?





Central Question

How might local governments support local collaborative efforts, with an eye towards connection and accessing federal funding?

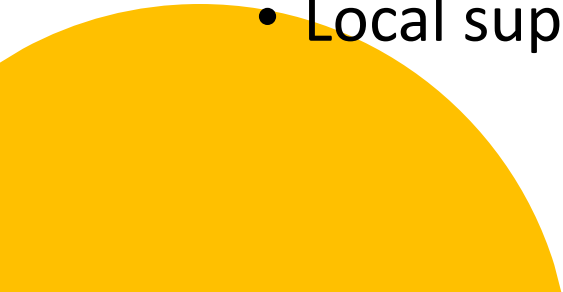



We asked about anchors at the beginning of the session? Which are the most important for us to address?



Core “Anchors” Identified

- Resources
 - Staff capacity
 - Time required
- Funding
 - Accessing Funding
 - Funding for collaboration
 - Funding requirements
 - Bureaucratic red-tape
- Competition/Silos
- Leadership and/or absence of leadership
 - Political will in light of priorities
 - Clarity of process
 - Lack of local champions
- Local support continuity/Longevity/maintenance





Select which
“anchor”
you’d like to
address

- The group will spend time discussing:
 - What are the long-term implications of this problem if left unresolved?
 - What resources or expertise do we need to solve this problem?
 - What are your recommendations to address this anchor?

Gallery Walk





Groups debrief