

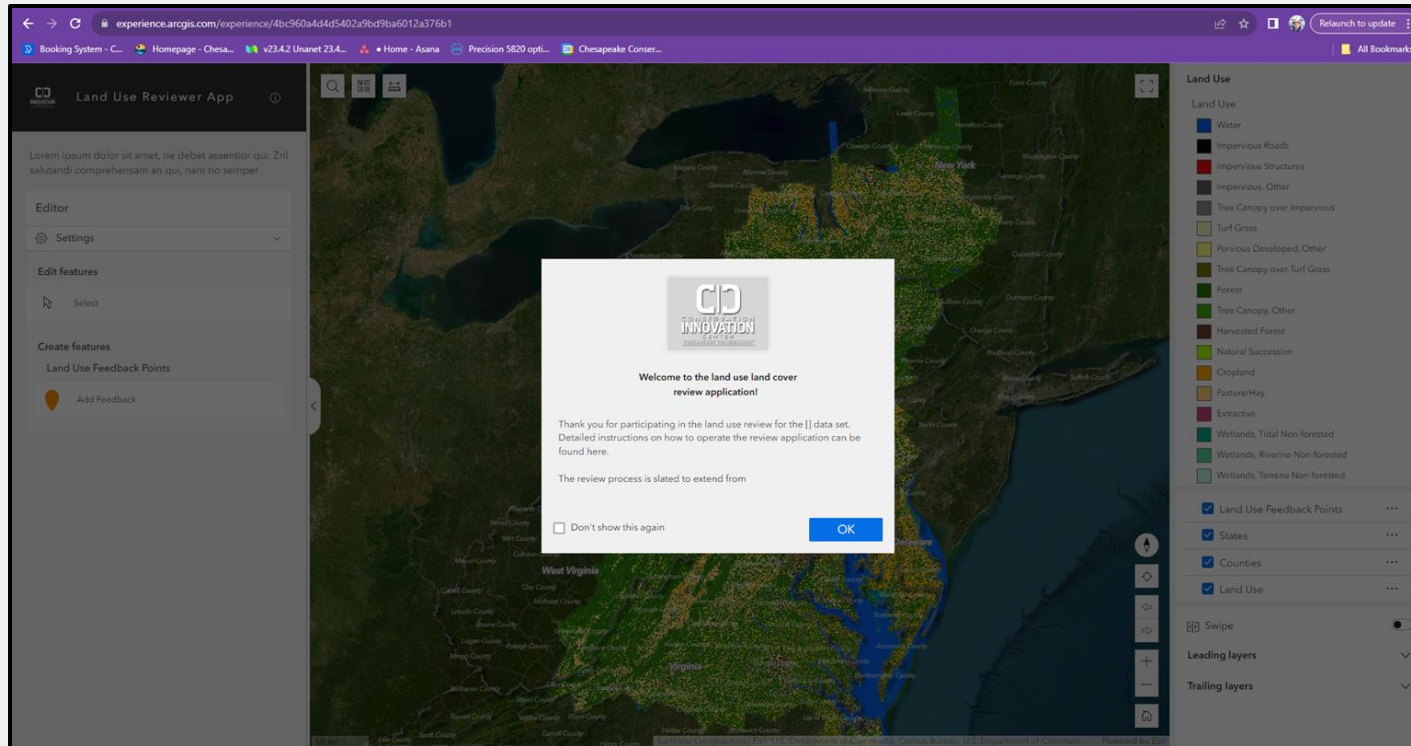


Local Review of the 2024 Edition Chesapeake Bay Land Use Land Cover Data

Steven Guinn, Chesapeake Conservancy

Joint Land Use and Forestry Workgroup | 1 December 2023

Land Use/Land Cover (LULC) 2024 Edition Review App



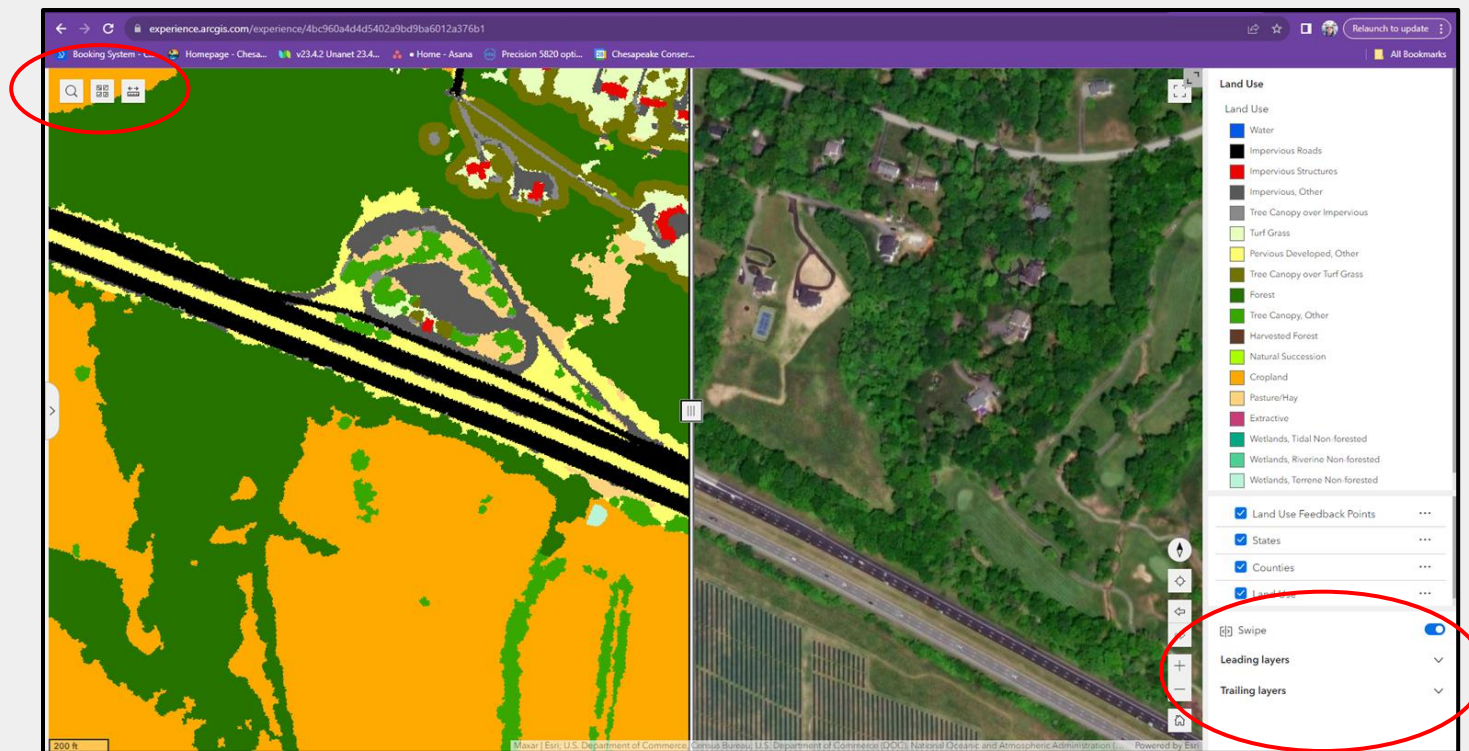
Overview of LULC Review App

- Web app hosted by the Chesapeake Conservancy and powered by ESRI Experience Builder
- Allows reviewers to directly compare the LULC data with the raw imagery used in production for QA
- Ancillary layers of state and county boundaries for orientation
- The app is persistent in that it permanently records and displays previously placed Land Use Feedback Points from all reviewers
- Robust search feature allows for lookup by address or place name
- Existing review points can be edited/deleted if needed

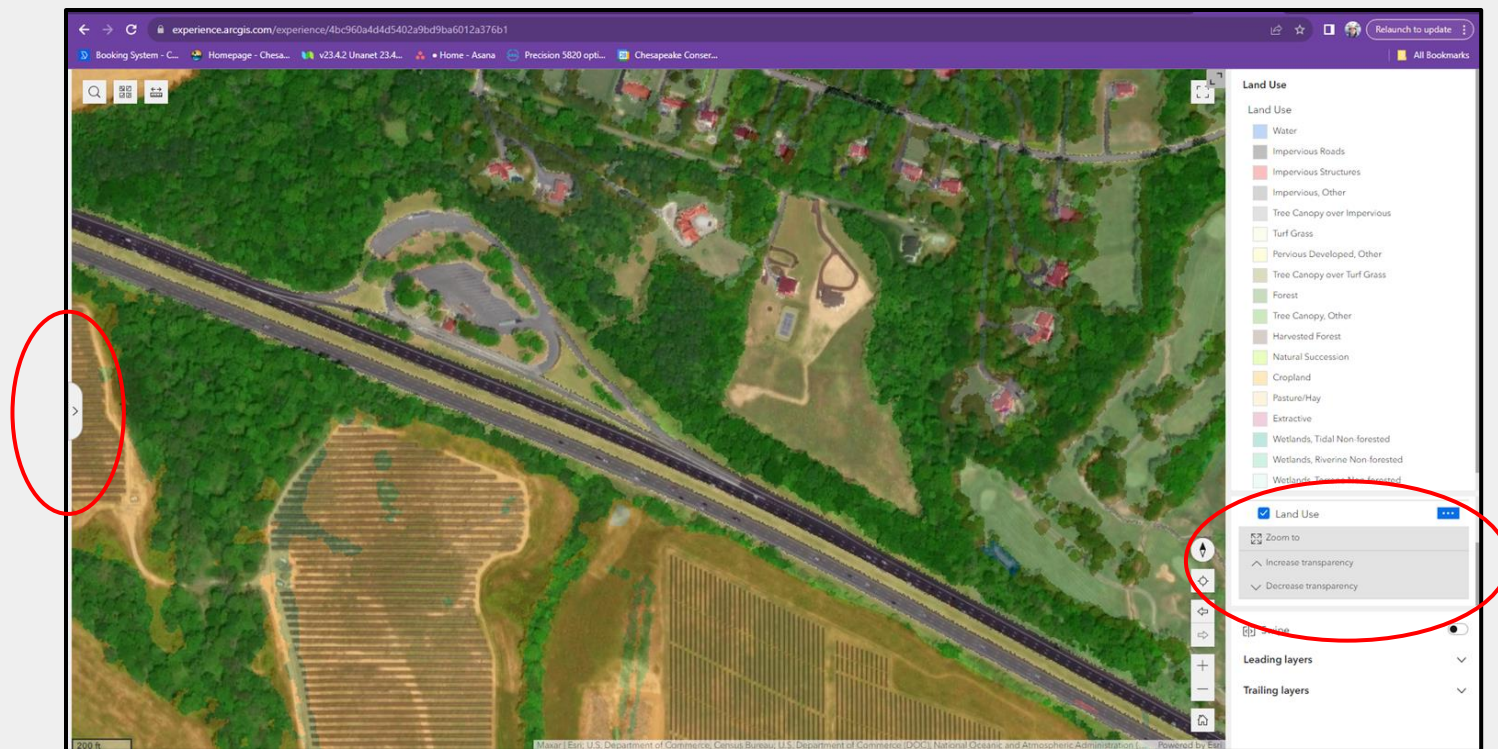
Setting up the workflow

- Before placing review points, experiment with different visualization options to find what works best for individual reviewers
- Changing the basemap options allows for more flexibility in what level and types of cartographic elements are visible
- Use the search feature to locate named places and addresses
- The ruler tool allows you to extract the size of features for additional context

Visualization Using Swipe Function



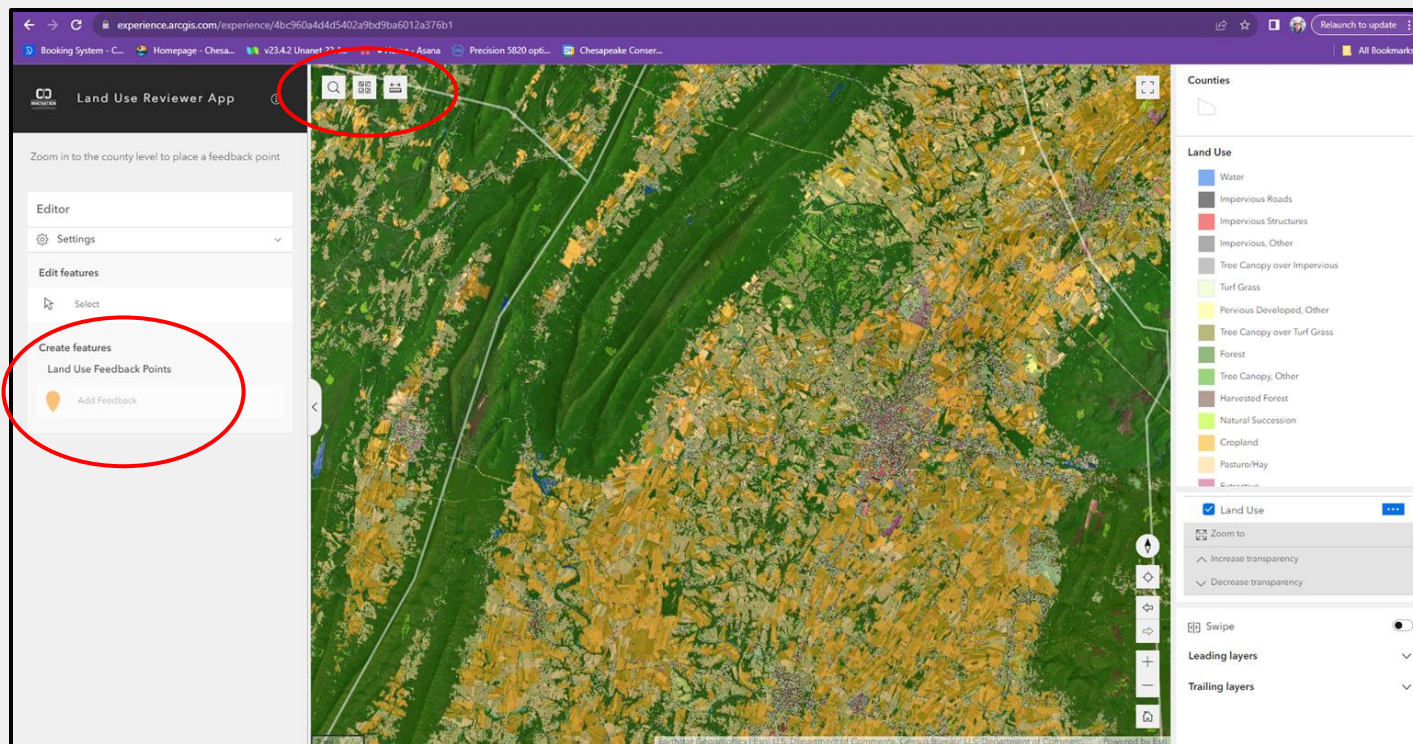
Visualization Using Transparency



Creating review points

- Locate the region of interest by panning the map or using the search function
- If not visible, expand the editing tab on the left side of the screen
- If the “Add feedback” is grayed out, zoom in until it becomes active
- Once in edit mode, place point on feature that is incorrectly mapped
- In the edit pane fill out name and reviewer email
- Using the “Land use as mapped” field, select the correct land use class
- Using the “Land use correction” field, select the land use class that the reviewer thinks is more appropriate
- Optionally, leave a comment if the reviewer needs to provide more input

Creating review points



Creating review points

The screenshot displays the 'Land Use Reviewer App' interface. On the left, a sidebar contains a 'Create features' section with fields for 'Reviewer Name*' (Steven Guinn), 'Reviewer Contact*' (sguinn@chesapeakeconservancy.org), 'Land Use As Mapped*' (Production: Cropland), and 'Land Use Correction*' (Production: Solar fields). Below these is a 'Notes (Optional: limit 140 characters)' field and a 'Create' button. The main area shows a map with a yellow review point. On the right, a sidebar lists 'Counties' and 'Land Use' categories with corresponding color swatches. A red circle highlights a 'Zoom to' menu with options to 'Increase transparency' and 'Decrease transparency', along with a 'Swipe' toggle and 'Display layers' and 'Trailing layers' sections.

Land Use Reviewer App

Zoom in to the county level to place a feedback point

Create features

Settings

Reviewer Name*

Steven Guinn

Reviewer Contact*

sguinn@chesapeakeconservancy.org

Land Use As Mapped*

Production: Cropland

Land Use Correction*

Production: Solar fields

Notes (Optional: limit 140 characters)

Create

Counties

Land Use

- Water
- Impervious Roads
- Impervious Structures
- Impervious, Other
- Tree Canopy over Impervious
- Turf Grass
- Pervious Developed, Other
- Tree Canopy over Turf Grass
- Forest
- Tree Canopy, Other
- Harvested Forest
- Natural Succession
- Cropland
- Pasture/Hay

Zoom to

- Zoom to
- Increase transparency
- Decrease transparency

Swipe

Display layers

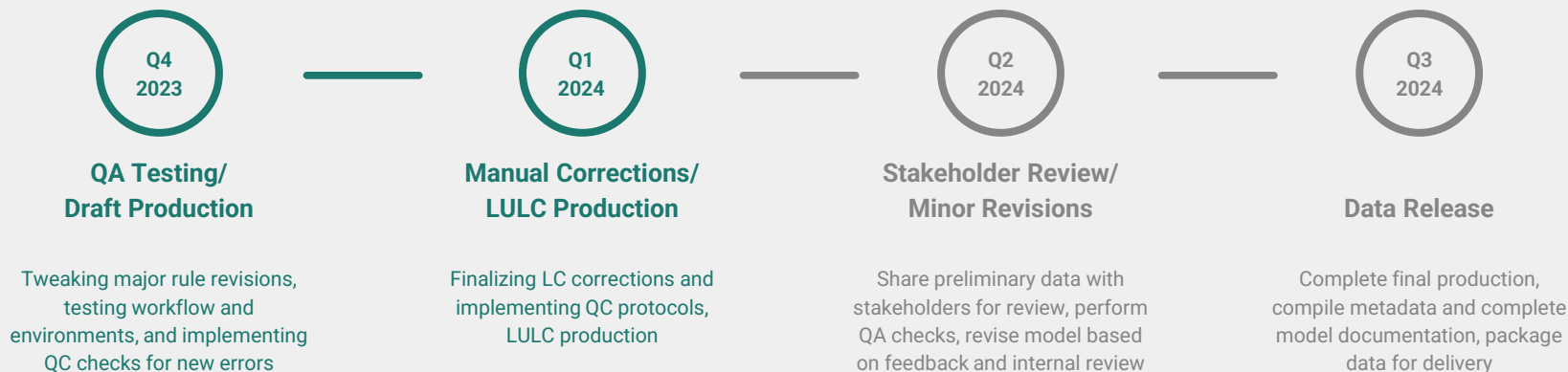
Trailing layers

Reviewer expectations

- All Contact information is completed correctly
 - Use employer/organizational email account
- Review points are accurately placed
 - Increase zoom as much as practical before placing point
 - Avoid placing points too close to the edge of a feature
 - Perform basic QA by reviewing and editing/deleting inaccurate review points
- Reviews are completed within the assigned time frame for that County
- Reach out to the Chesapeake Conservancy CIC if experiencing issues with the web application ASAP for timely resolution

1-meter Land Use/Land Cover Data Project

Overall timeline - 2024 edition



Steven Guinn (he/him)

Geospatial Modeler

Chesapeake Conservancy

sguinn@chesapeakeconservancy.org

Sarah McDonald (she/her)

Geographer

U. S. Geological Survey

smcdonald@chesapeakebay.net

Questions? Feedback?