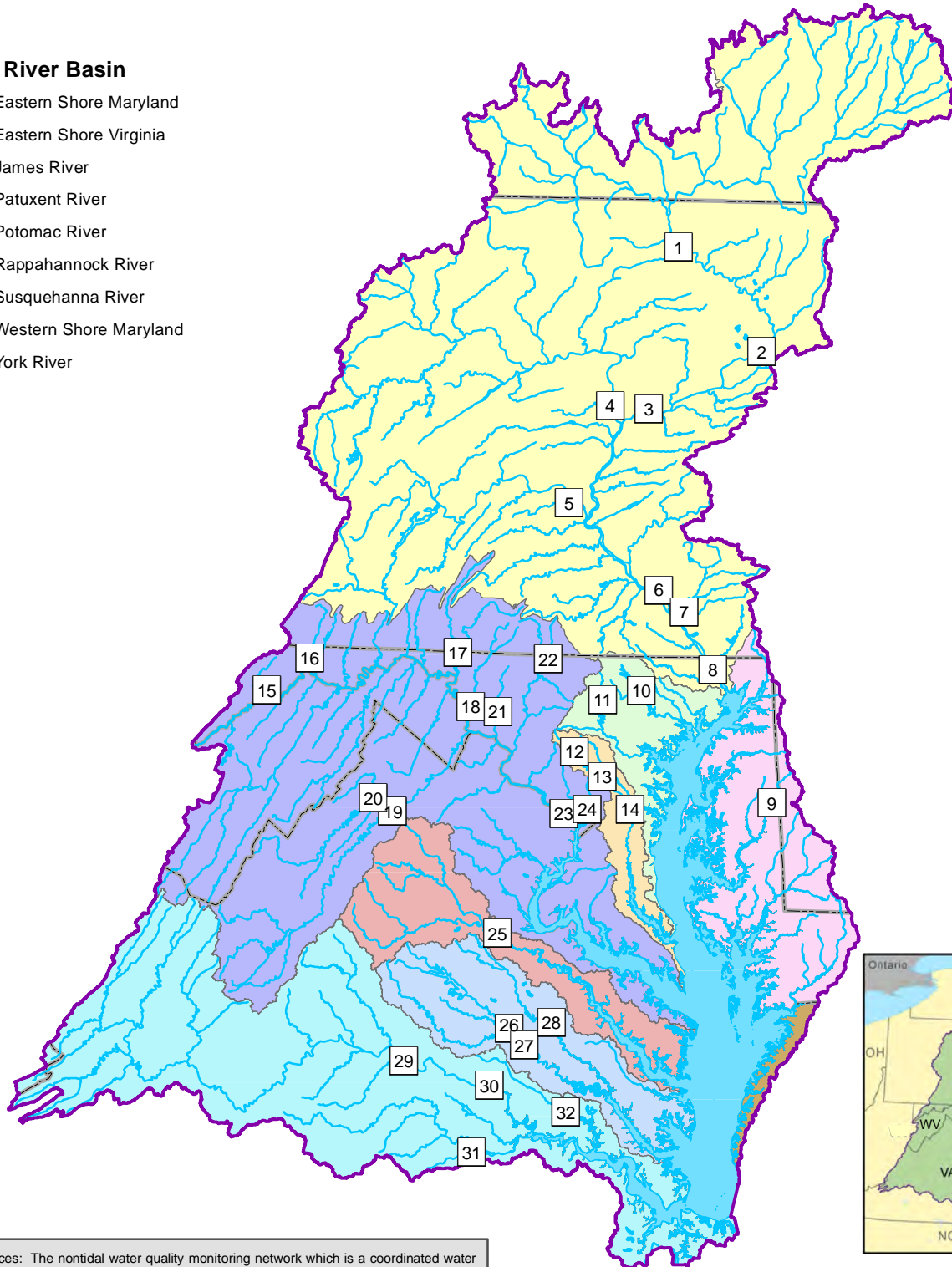


# Key to Monitoring Stations (Flow Adjusted Concentrations)



## Major River Basin

- Eastern Shore Maryland
- Eastern Shore Virginia
- James River
- Patuxent River
- Potomac River
- Rappahannock River
- Susquehanna River
- Western Shore Maryland
- York River



Data Sources: The nontidal water quality monitoring network which is a coordinated water quality monitoring program for the nontidal streams and rivers in the Chesapeake Bay Watershed. Monitoring is coordinated by the following partners: USGS, VADEQ, MDDNR, WVDEP, PADEP, SRBC, NYSDEC, and DNREC.

For more information, visit [www.chesapeakebay.net](http://www.chesapeakebay.net)  
 Disclaimer: [www.chesapeakebay.net/termsfuse.htm](http://www.chesapeakebay.net/termsfuse.htm)

