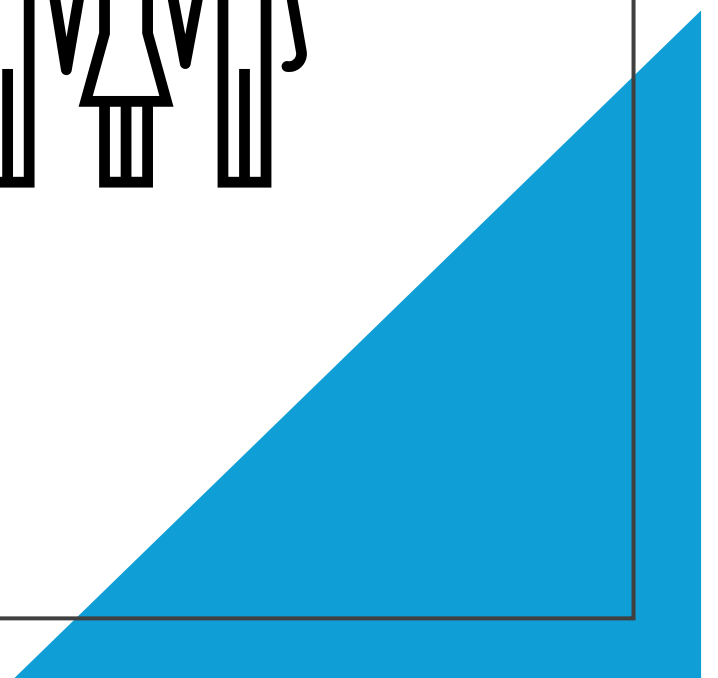
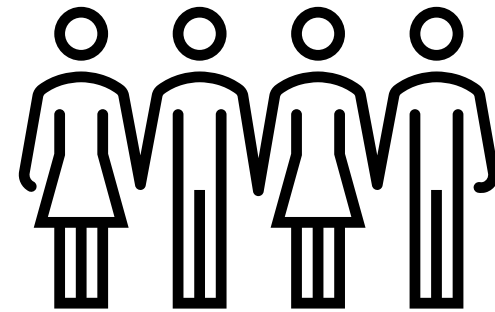


# Who are our members?


*Do we have everyone?*





## Objective:

*Broaden participation of the NTN WG to include field technicians and management staff across all agencies.*

- 1. Present our current list of contacts and where we see gaps.*
  - 2. Circulate a Google Form for attendees to fill the form with their most up-to-date Points of Contacts.*
- 

### ***NTN Organizers***

- **USGS** - Peter Tango, Coordinator
- **CRC** - Gabriel Duran, Staffer

### ***NTN Leaders***

- **USGS** – Jimmy Webber, Ken Hyer, Doug Moyer, & Tammy Zimmerman
- **EPA** – Kaylyn Gootman

# Workgroup Member list

## **Federal**

- ***USGS:***
  - Alex Gunnerson
  - Alex Soroka
  - Breck Sullivan
  - Durga Ghosh
  - James Colgin
  - Joel Blomquist
  - John Clune
  - Nicholas Santoro
  - Chris Lewis
  - Chris Mason
  - Matt Cashman
  - Mark Gress
  - Mark Nardi
  - Doug Chambers
- ***EPA:***
  - Greg Pond
  - Lee McDonnell

## **States**

- ***Maryland:***
  - Andrew Keppel - DNR
  - Kristen Heyer - DNR
  - Renee Karrh - DNR
  - Tom Parham - DNR
  - Matt Stover – MDE
- ***Pennsylvania:***
  - Dustin Shull –GOV
  - Mark Brickner – GOV
  - Molly Pulket - DEP
  - Scott Heidel – DEP
  - Ashley Hullinger - DEP
  - Kristen Wolf - DEP
  - Tyler Trostle – DEP

## **States:**

- ***Virginia:***
  - Amanda Shaver - DEQ
  - Andrew Kirk - DEQ
  - Cindy Johnson - DEQ
  - Meighan Wiswell – DEQ
- ***West Virginia:***
  - Julie Wandling - DEP
  - Nick Murray – DEP
- ***D.C.:***
  - Lori Brown
- ***Delaware:***
  - Bhanu Paudel - DNREC
  - Lori Brown – DNREC

## **Other:**

- Andrew Gavin – SRBC
- Ellyn Campbell - SRBC
- James Shallenberger - SRBC
- Tyler Shenk – SRBC
- Mike Mallonee – ICPRB
- Carl Friedrichs – VIMS
- Qian Zhang - UMCES

# Is there anyone missing here?

Fill out this Google Form to help us identify those individuals we should be talking to: [Questionnaire](#)

## NTN Points of Contacts

*Looking ahead for the NTN WG in-person meetings, we aim to be more intentional on fostering good communication between field technicians and management staff across all agencies meanwhile conducting field audits that maximize staff participation. To do so, we need your help in updating our Points of Contacts so we are reaching the people that we need to reach.*

*Please fill out this questionnaire with any updated points of contacts to your agency and if there individuals not included that you think we should connect with.*