

# CBP Land Use Strategy and... Targeting Restoration and Conservation Actions

Peter Claggett, John Wolf, Labeeb Ahmed, and Sarah McDonald

Lower Mississippi-Gulf Water Science Center, U.S. Geological Survey

Stakeholder Advisory Committee's Conservation and Land Use Subcommittee  
September 18, 2024

## **Management Board Consideration #3: Support the new CBP Land Use Strategy**

**The importance of planning and conservation to maintain healthy streams and watersheds and to sustain restoration progress in the face of population growth and associated changes in land use (and climate) has been a primary concern of the CBP Partners since its inception in 1983.**

**Over the past 40 years, the CBP has struggled to define a value-added role in planning and conservation because both activities are mostly implemented locally by county and municipal governments and NGO's.**

**The proposed new CBP Land Use Strategy, endorsed by the Land Use Workgroup and presented to the WQGIT and HWGIT, provides guidance on how the CBP can be more supportive and effective in promoting conservation and sound land use decisions.**

# Five Elements of the new CBP Land Use Strategy

1. Monitor land use/land cover change at high spatial, temporal, and categorical resolution consistently throughout the Bay watershed and intersecting counties.
2. Forecast plausible future scenarios of land use change into the future (e.g., 2030, 2050).
3. Assess impacts of current and future changes in land use to water quality, wildlife and aquatic habitats, climate resiliency, and other ecosystem services.
4. Encourage smart growth policies for new development (e.g., infill, redevelopment, and preserving rural character) by enhancing local capacity to conserve lands and providing information to inform land use planning decisions that minimize losses of valued natural and working lands.  
  
*Protect the best, plan the rest.*
5. Effectively communicate land use/land cover information to local decisionmakers. Make it actionable and relevant to their needs and concerns.

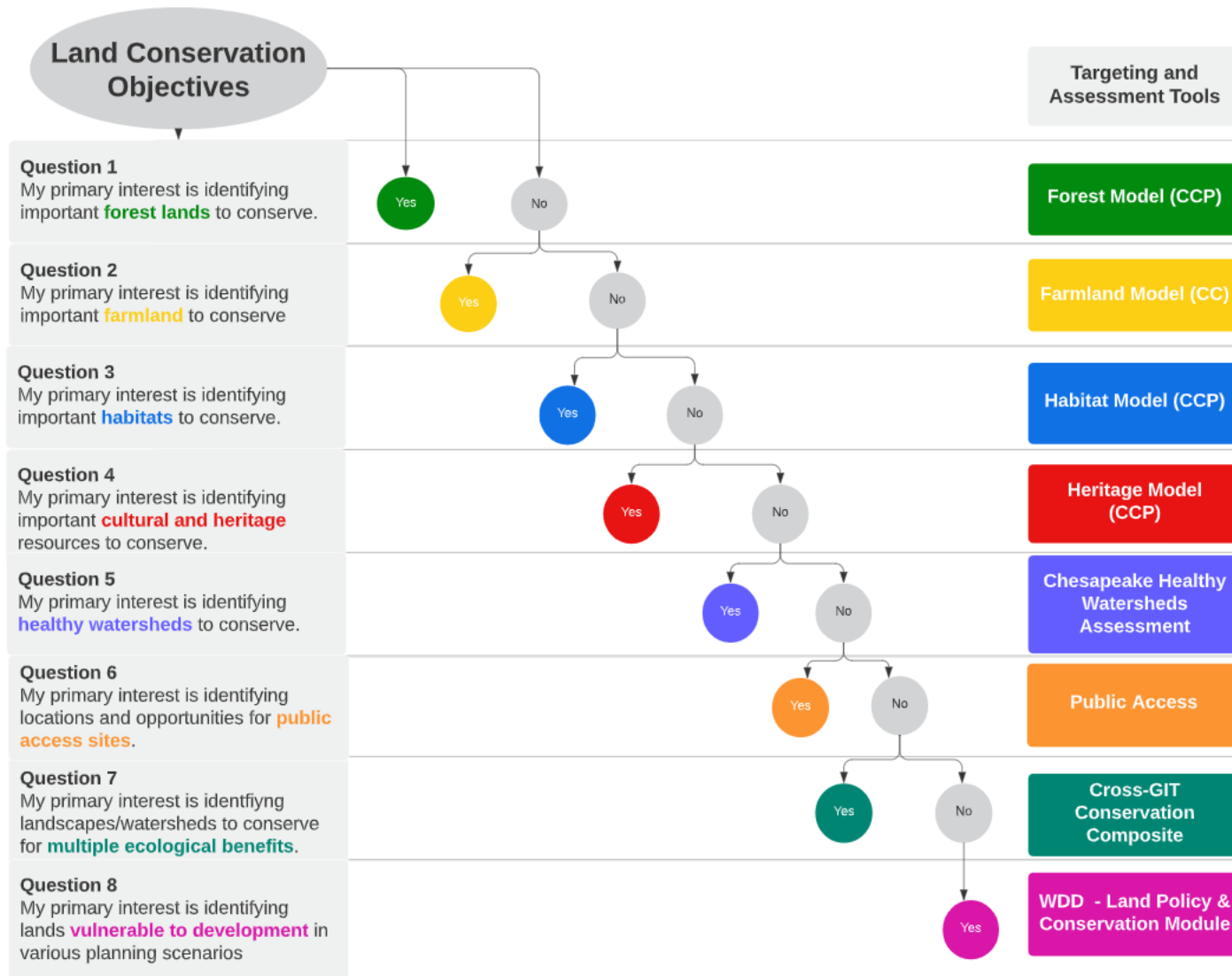
# Five Elements of the new CBP Land Use Strategy

Data &  
Science

1. Monitor land use/land cover change at high spatial, temporal, and categorical resolution consistently throughout the Bay watershed and intersecting counties.
2. Forecast plausible future scenarios of land use change into the future (e.g., 2030, 2050).
3. Assess impacts of current and future changes in land use to water quality, wildlife and aquatic habitats, climate resiliency, and other ecosystem services.

Decision  
Support

4. Encourage smart growth policies for new development (e.g., infill, redevelopment, and preserving rural character) by enhancing local capacity to conserve lands and providing information to inform land use planning decisions that minimize losses of valued natural and working lands.  
*Protect the best, plan the rest.*
5. Effectively communicate land use/land cover information to local decisionmakers. Make it actionable and relevant to their needs and concerns.



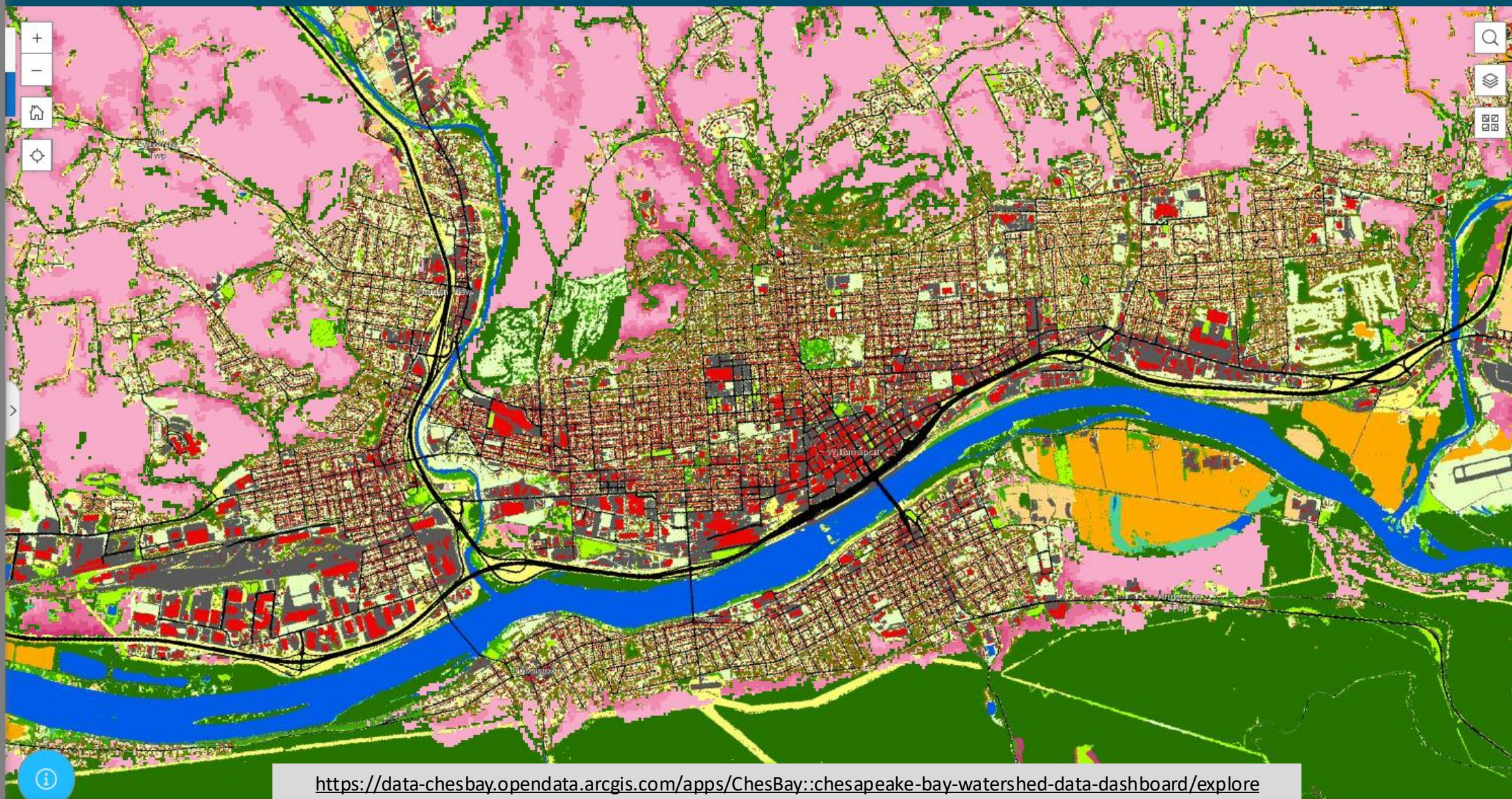


# Watershed Data Dashboard: Land Policy & Conservation Dashboard

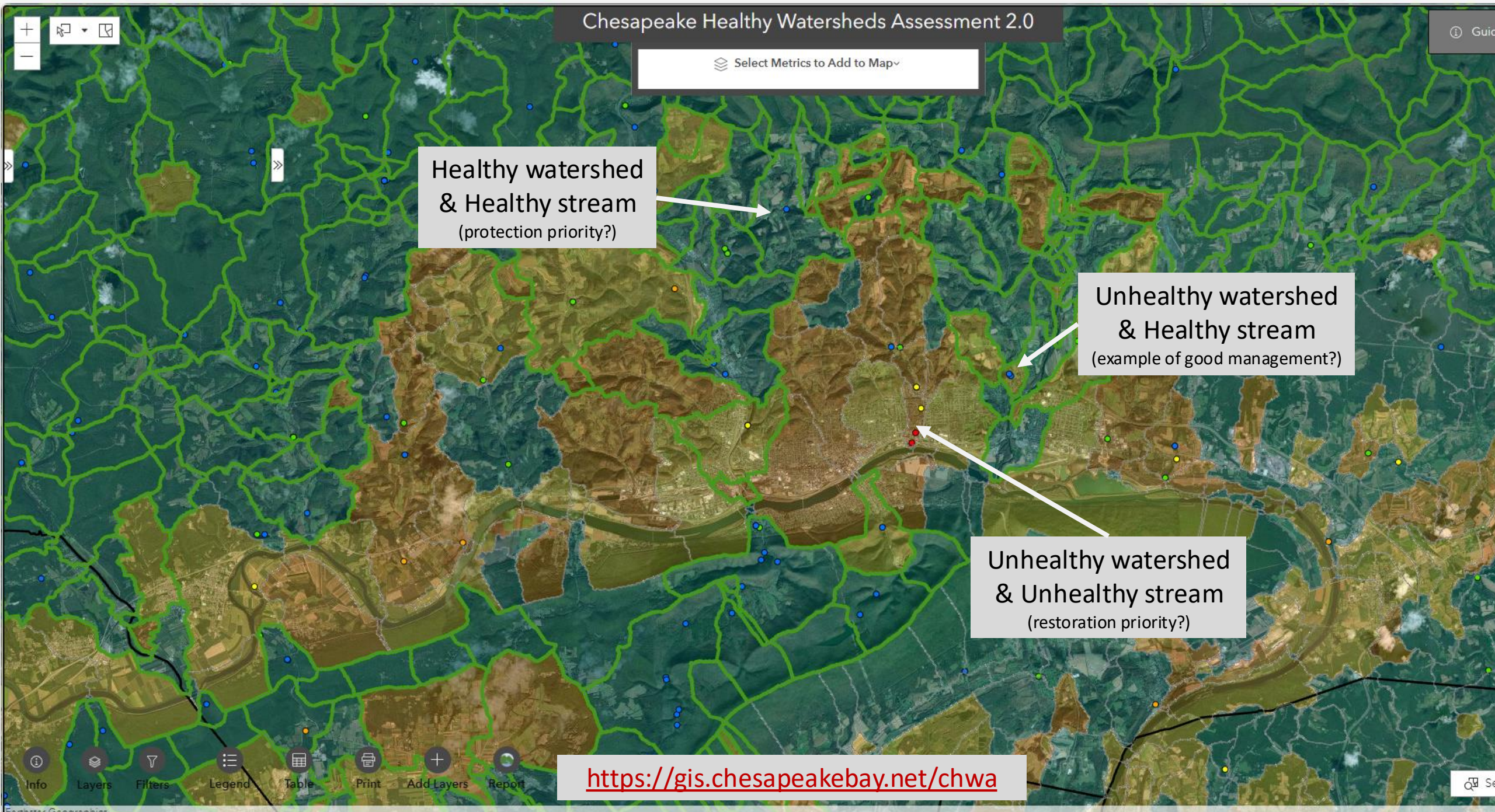
Land Policy & Conservation

Land Use Dataset Comparison

Additional Resources







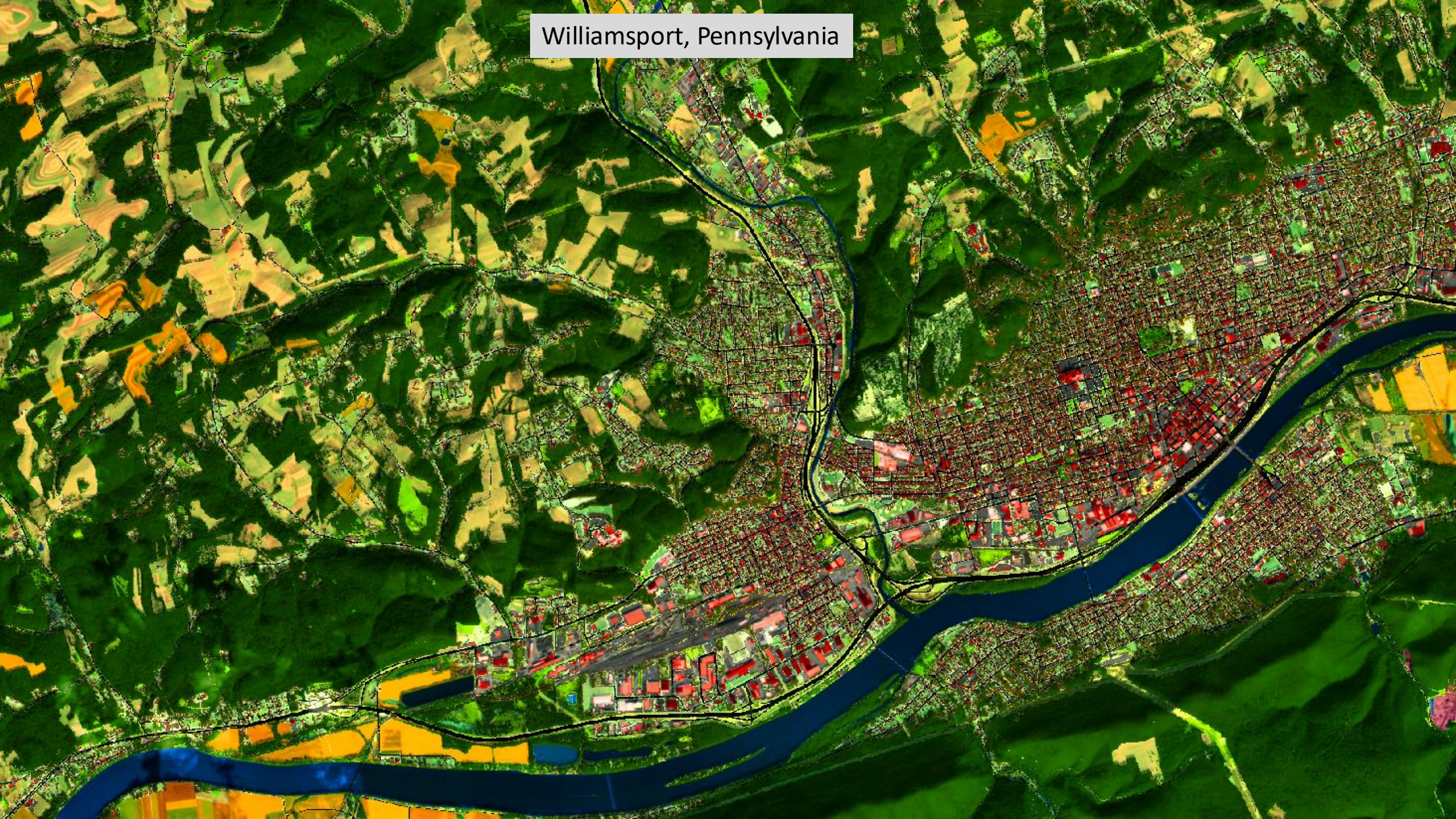


Williamsport, Pennsylvania





Williamsport, Pennsylvania



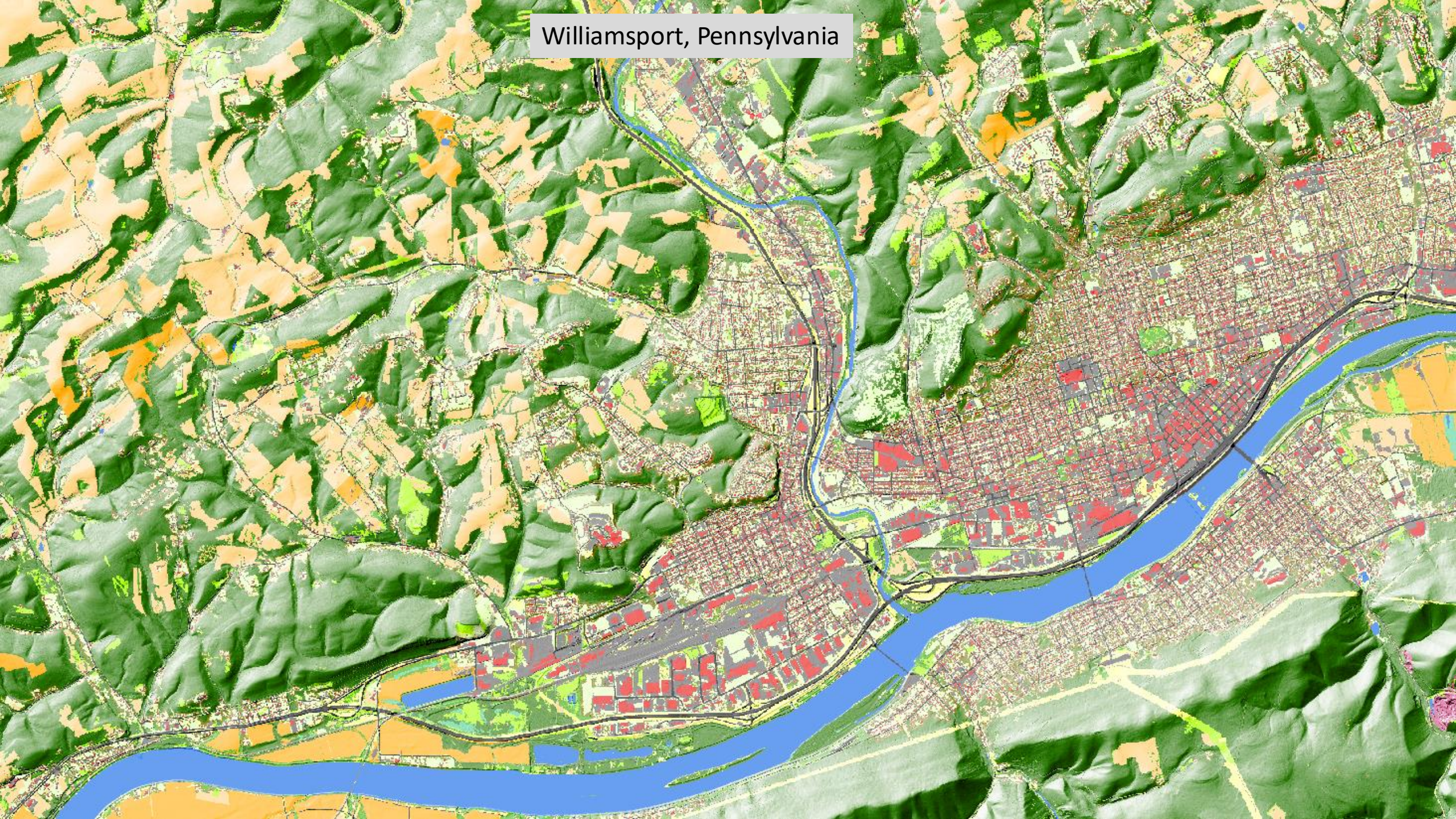


Williamsport, Pennsylvania





# Williamsport, Pennsylvania





# Parcel-scale Identification of Potential Restoration Opportunities





## Parcel-scale Identification of Potential Restoration Opportunities





## Parcel-scale Identification of Potential Restoration Opportunities





## Parcel-scale Identification of Potential Restoration Opportunities





# Targeting Tool Considerations

- Targeting tools are best used by those familiar with the data and decisions, working together with decision makers.
- Data quality, availability, and currency are always limiting factors associated with all targeting tools.
- No targeting tool is perfect. Their development involves tradeoffs between relevance, flexibility, transparency, and ease of use.
- The CBP is developing the data and capacity to inform parcel-scale prioritization of conservation and restoration actions.
- Understanding who makes restoration and conservation decisions, what information they depend on to inform those decisions, and where they get their information are critical for developing useful tools.





science for a changing world