

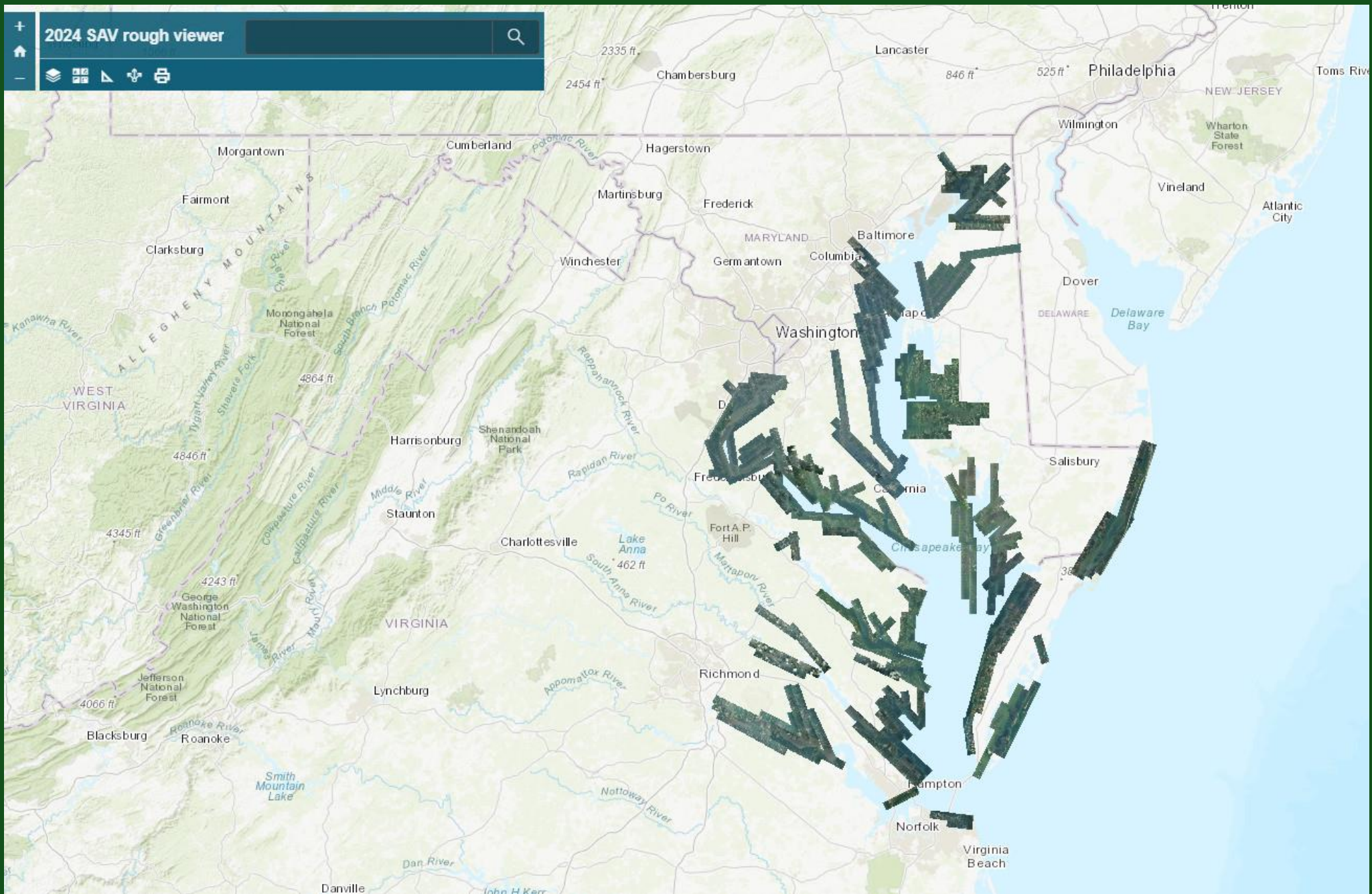
Submerged Aquatic Vegetation (SAV) A first look at the 2024 imagery SAV Workgroup

November 13, 2024

David Wilcox

dwilcox@vims.edu

<http://web.vims.edu/bio/sav/>

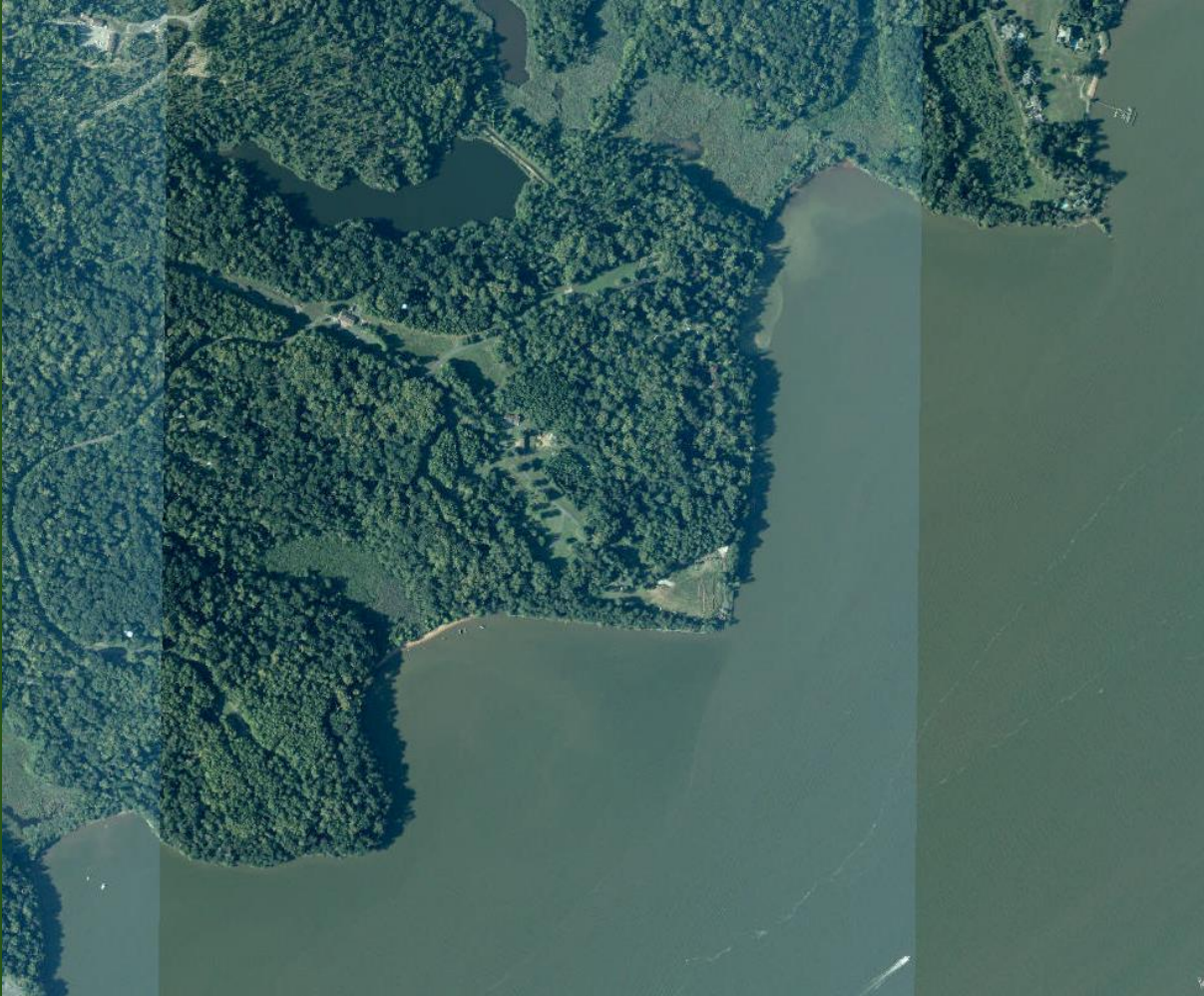


Susquehanna Flatts- About the same



(2023 beds are in red)

Elk River - Return of SAV



2023



2024

Acquia Creek - Increase



(2023 beds are in orange, 2024 are in red)

Severn River – About the same



(2023 beds are in red)

Harris Creek - Decrease



(2023 beds are in red)

Choptank River- Decrease



(2023 beds are in red)

Trippe Bay - Decrease



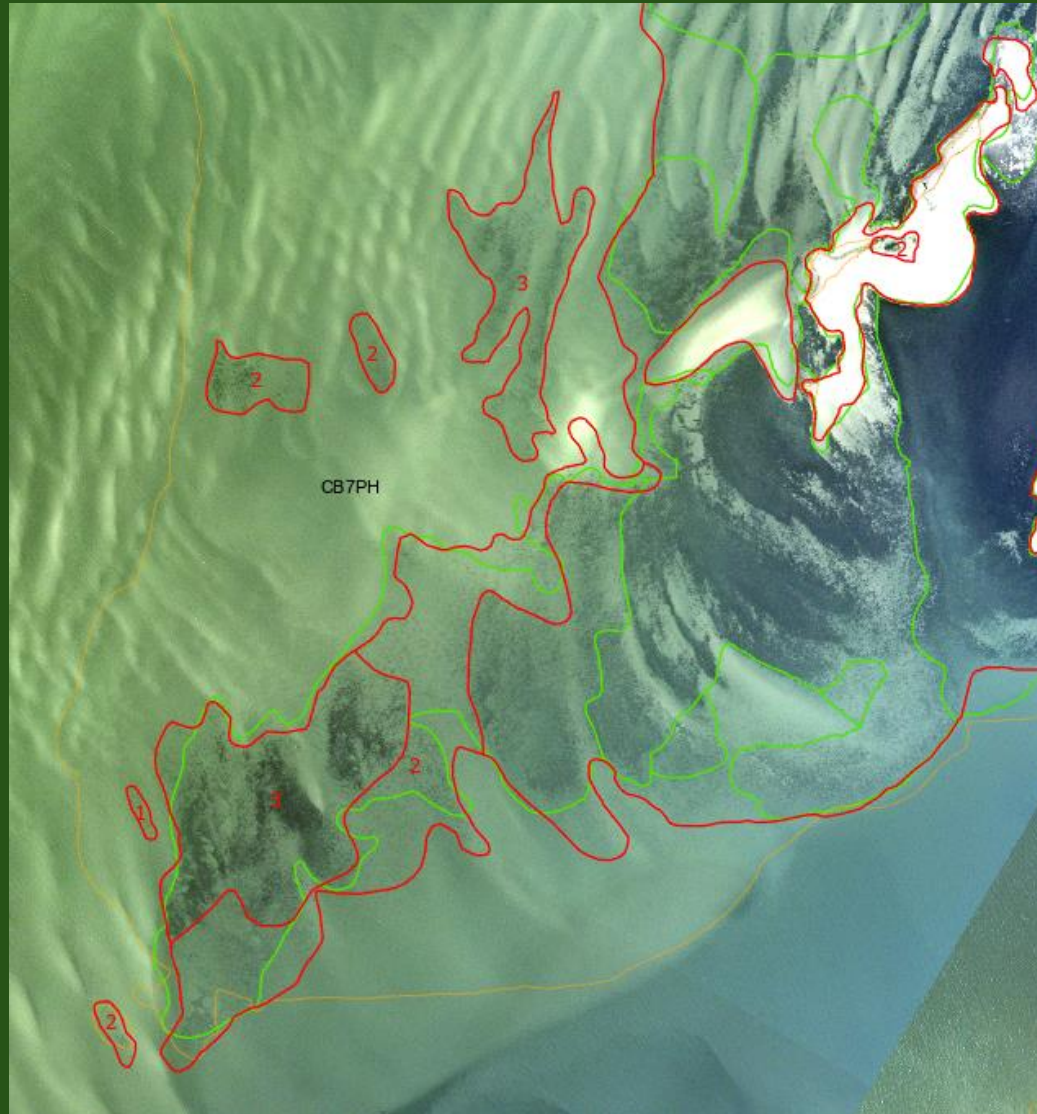
(2023 beds are in red)

Honga River- Decrease



(2023 beds are in red)

Nandua Creek - Increase



(2023 beds are in green, 2024 beds are in red)

Mobjack Bay - Increase



(2023 beds are in orange, 2024 are in red)

Mobjack Bay - Increase



(2023 beds are in orange, 2024 are in red)

Some helpful links

- VIMS interactive map
 - <https://mobjack.vims.edu/sav/savwabmap/>
- VIMS rough imagery viewer 2024
 - <https://vims-wm.maps.arcgis.com/apps/View/index.html?appid=3b0234efcd5444be96bc5f5db86e06ad>
- VIMS rough imagery viewer 2023
 - <https://vims-wm.maps.arcgis.com/apps/mapviewer/index.html?webmap=1c0ae2803e7f4b57a17a38f4d710edf8>