

Soil Phosphorus History

Andrew Sommerlot¹, Gary Shenk²

¹UMCES

²USGS

Soil P History

Soil P is an Important Sensitivity

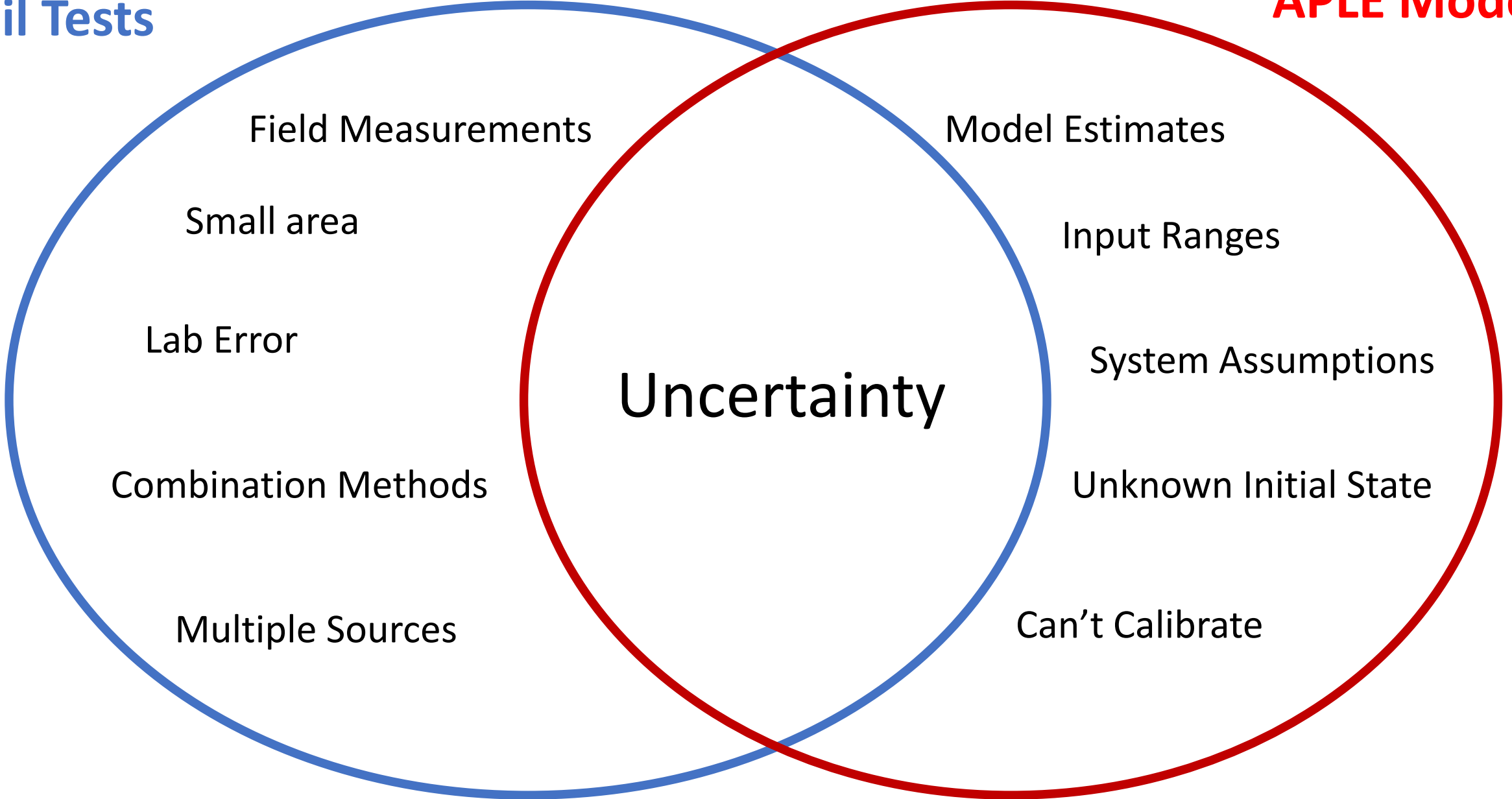
Soil Tests

Annual Phosphorus
Loss Estimator
(APLE)

Both sets of data have problems providing satisfactory estimates

Soil Tests

APLE Model



Field Measurements

Small area

Lab Error

Combination Methods

Multiple Sources

Model Estimates

Input Ranges

System Assumptions

Unknown Initial State

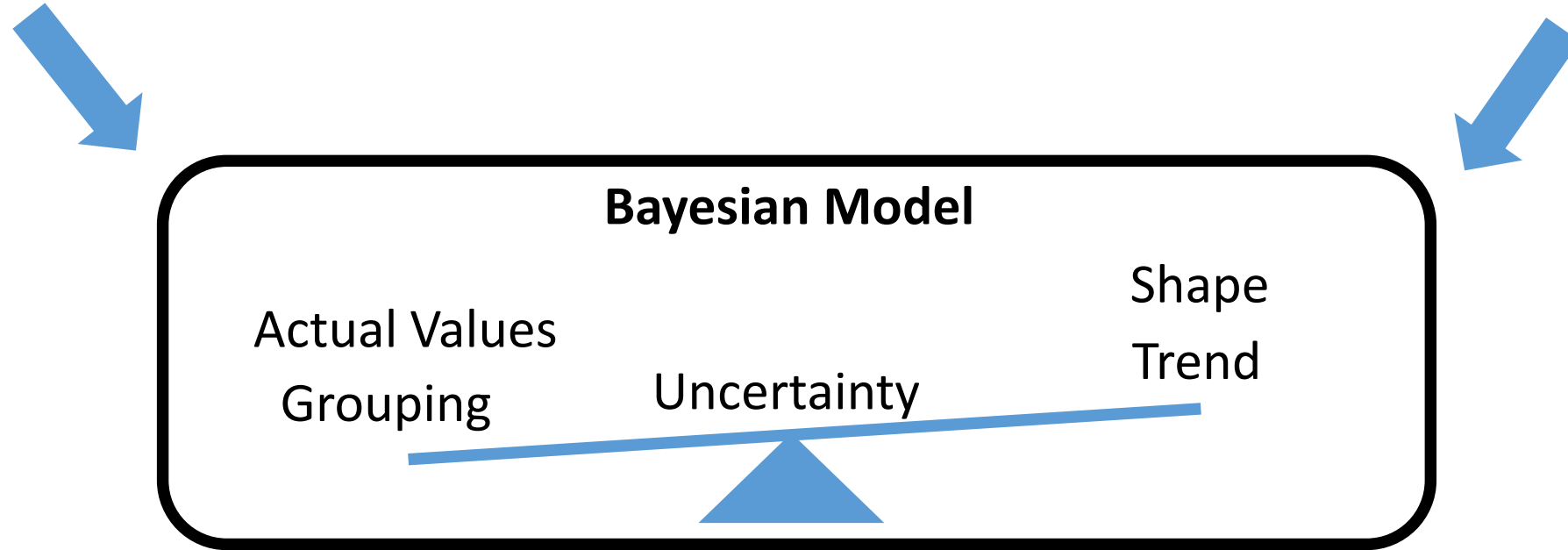
Can't Calibrate

Uncertainty

Balance of what the two data sets are telling us

Soil Tests

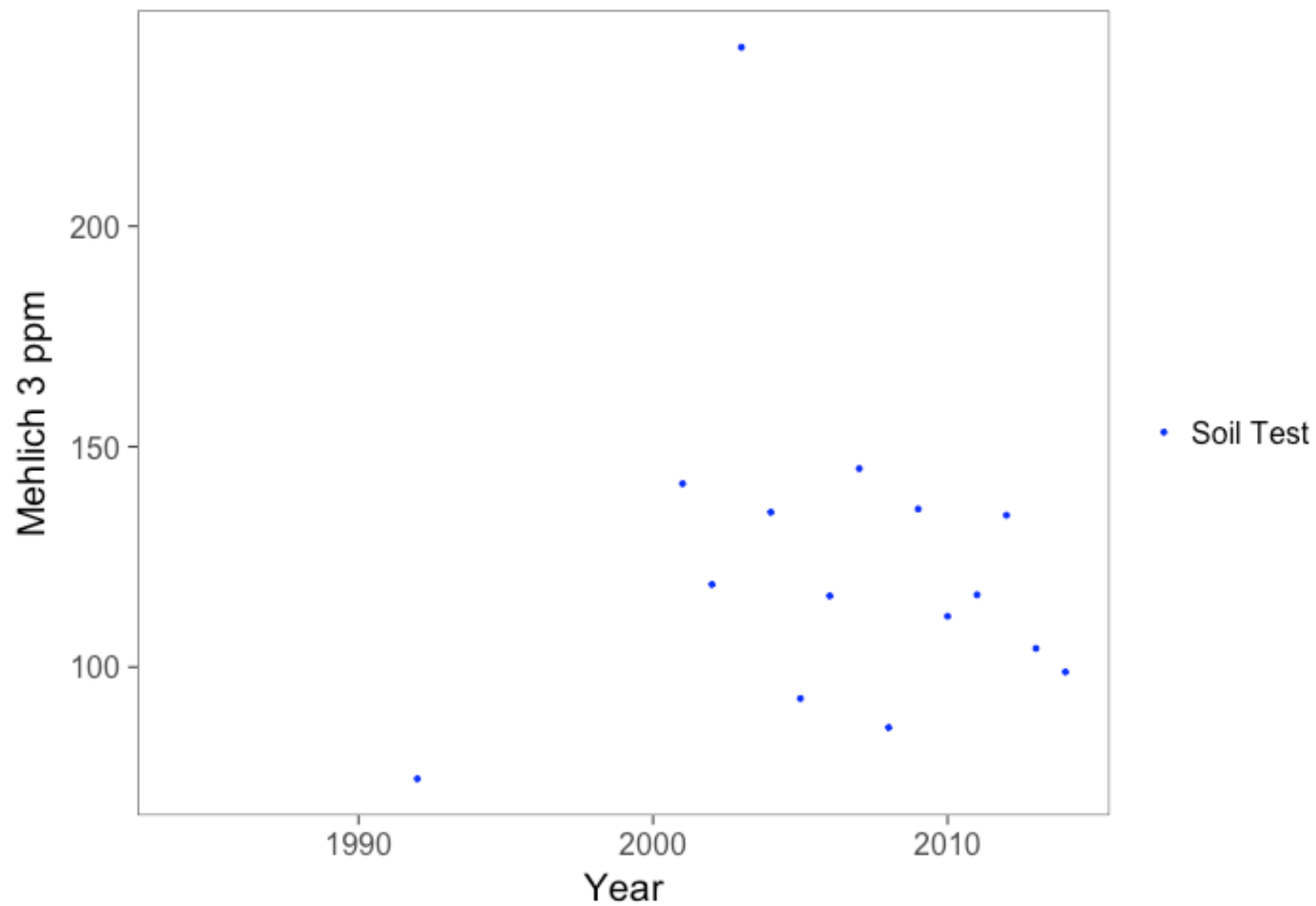
APPLE Model



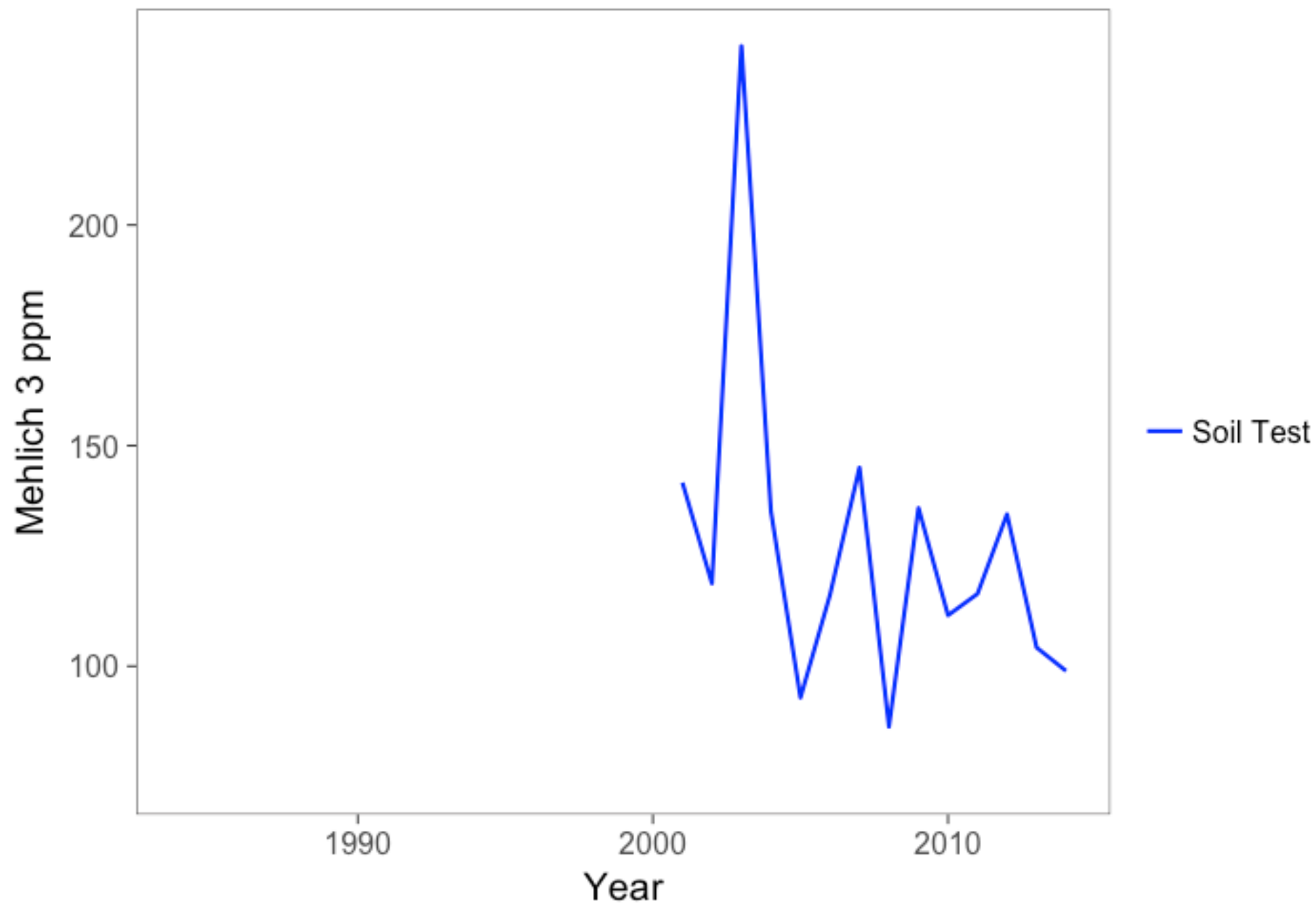
Final Estimate

What does it look like with real data?

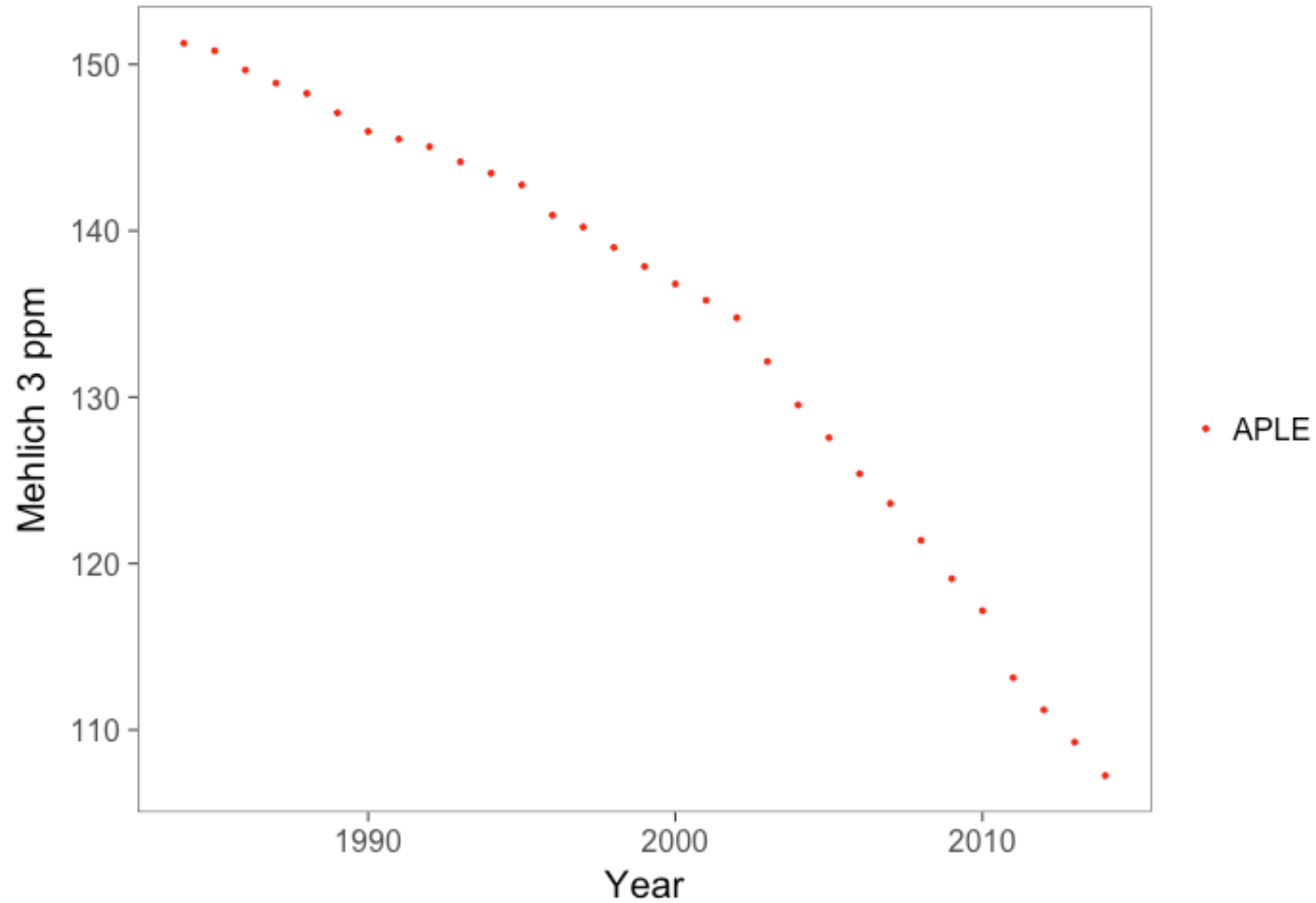
Single Land Segment and Landuse



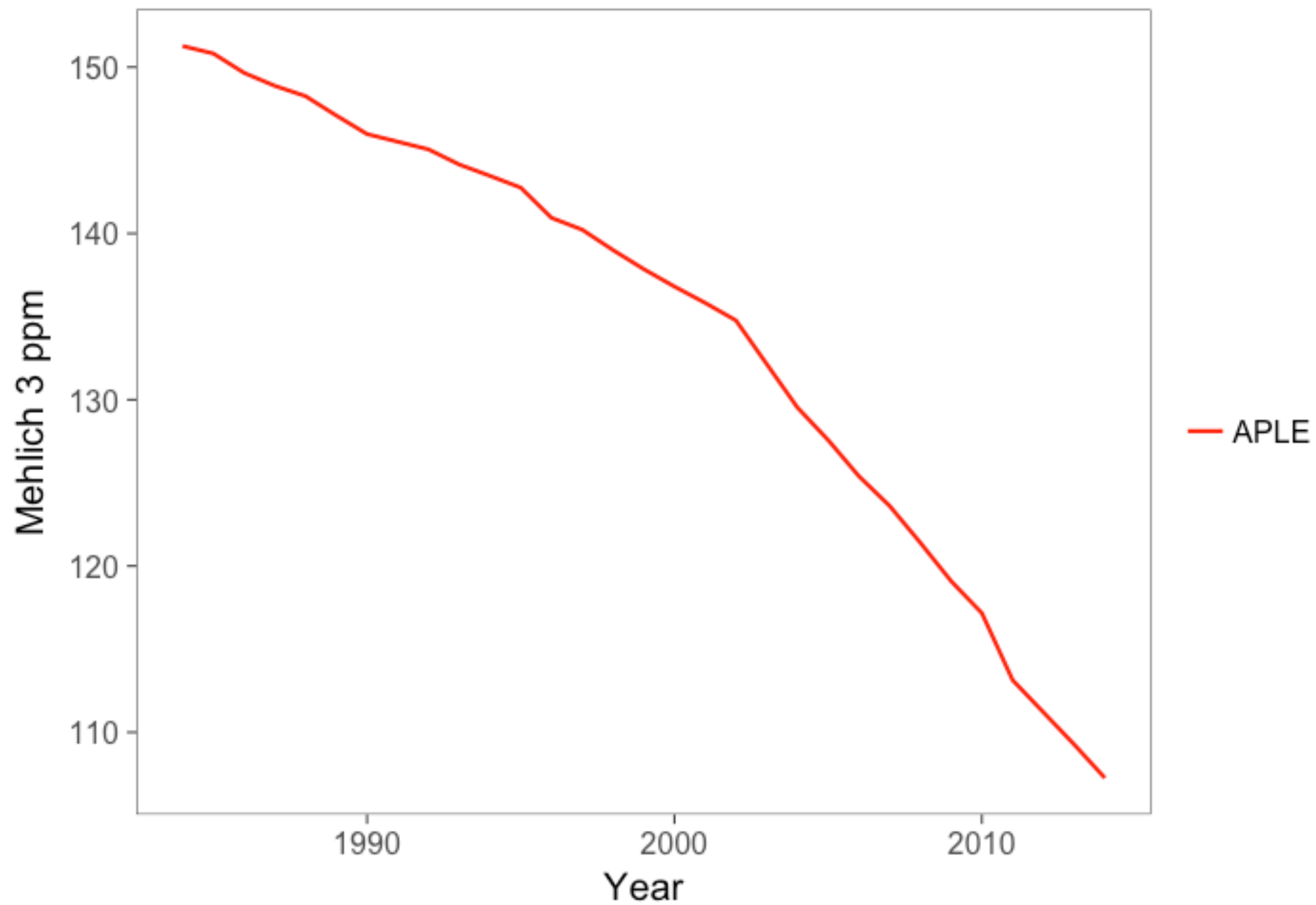
Single Land Segment and Landuse



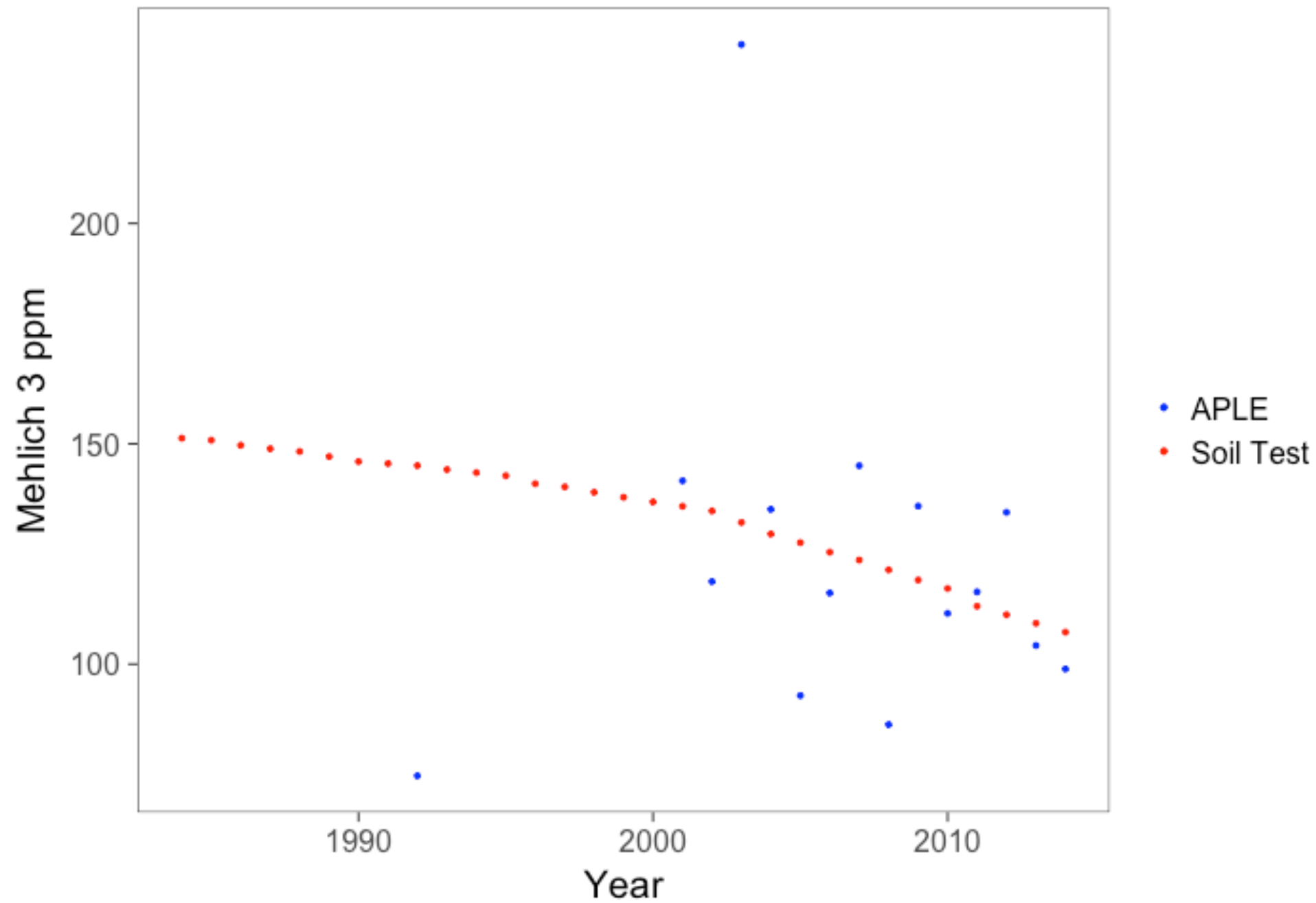
Single Land Segment and Landuse



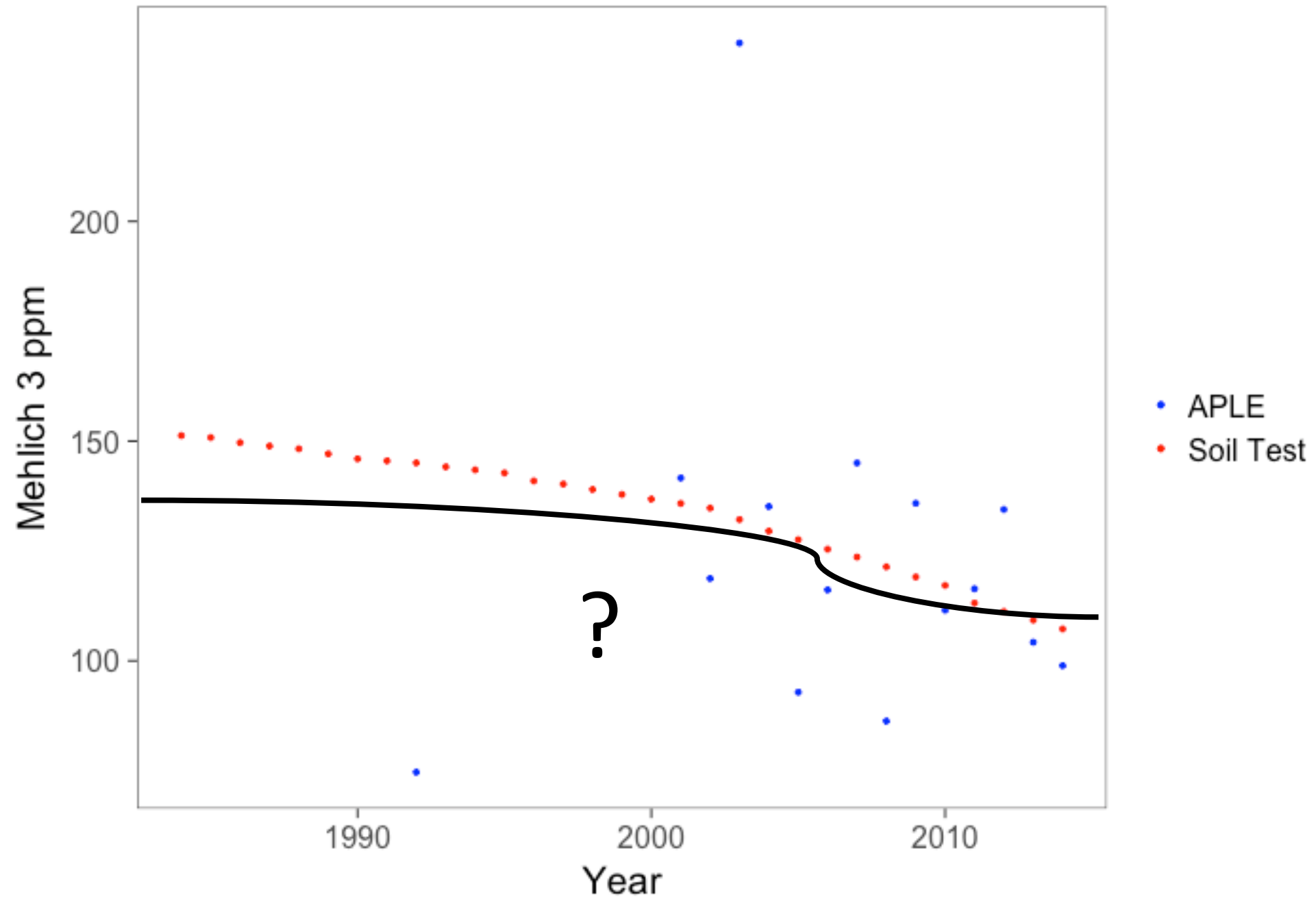
Single Land Segment and Landuse



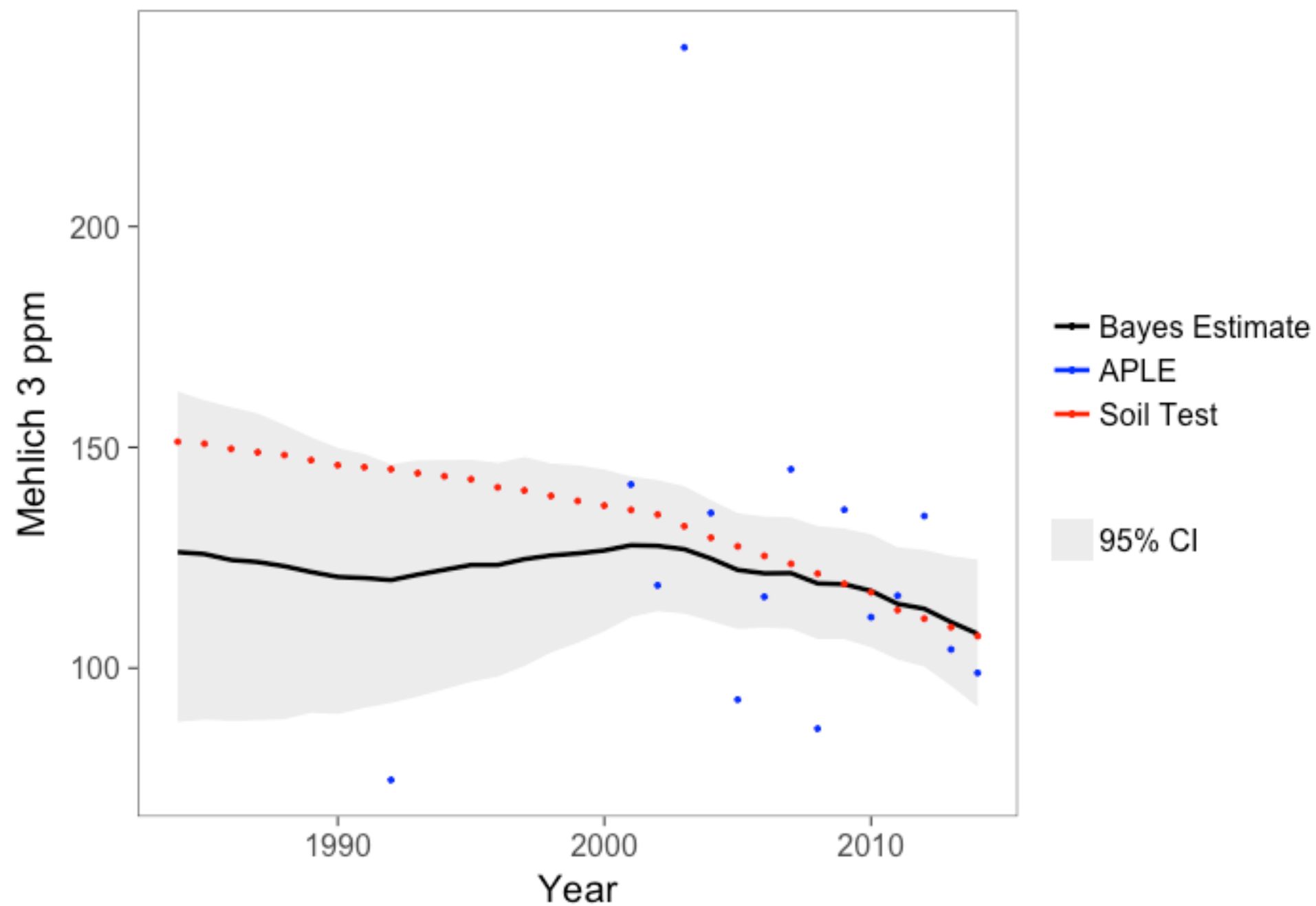
Single Land Segment and Landuse



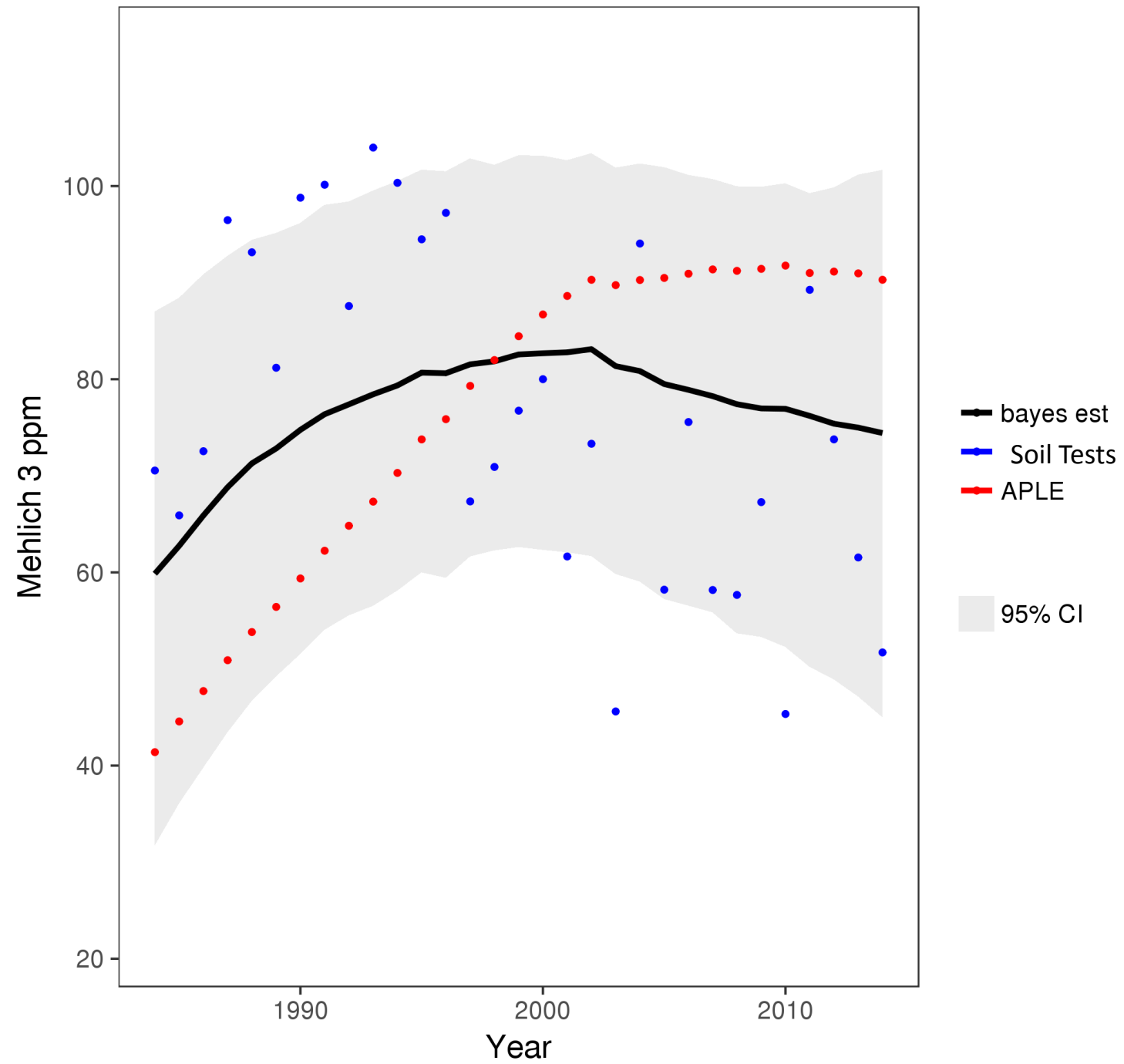
Single Land Segment and Landuse

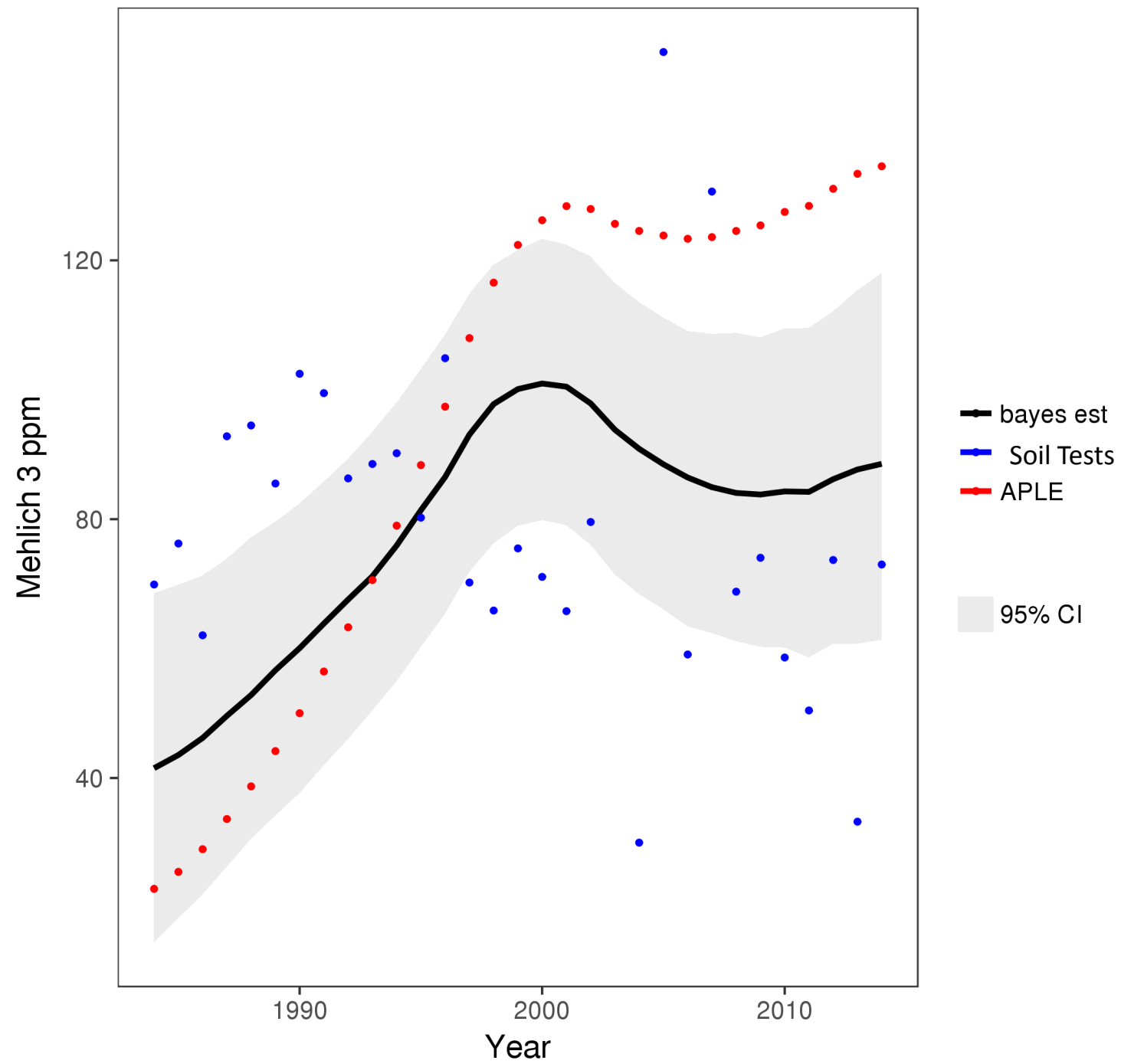


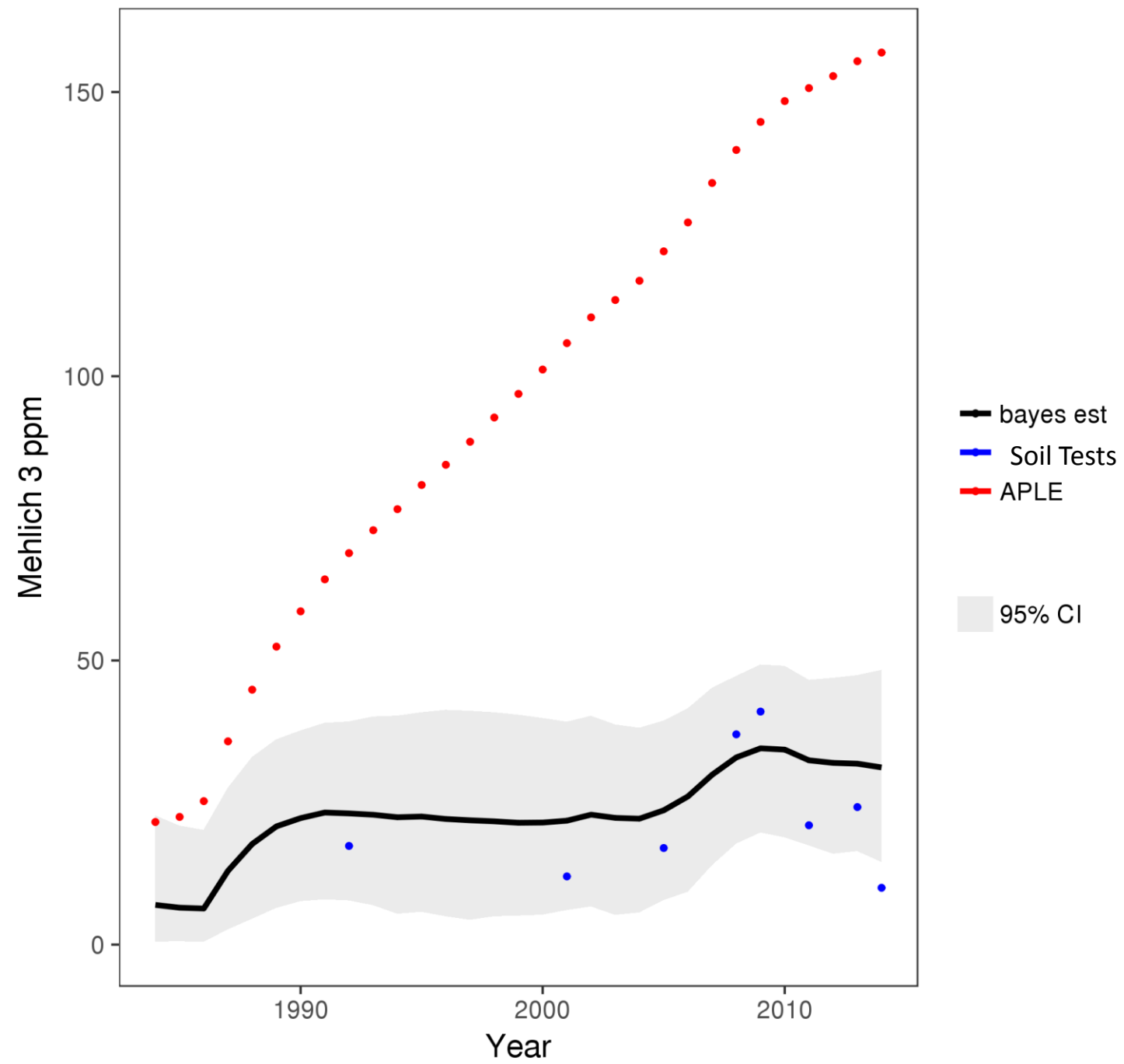
Single Land Segment and Landuse

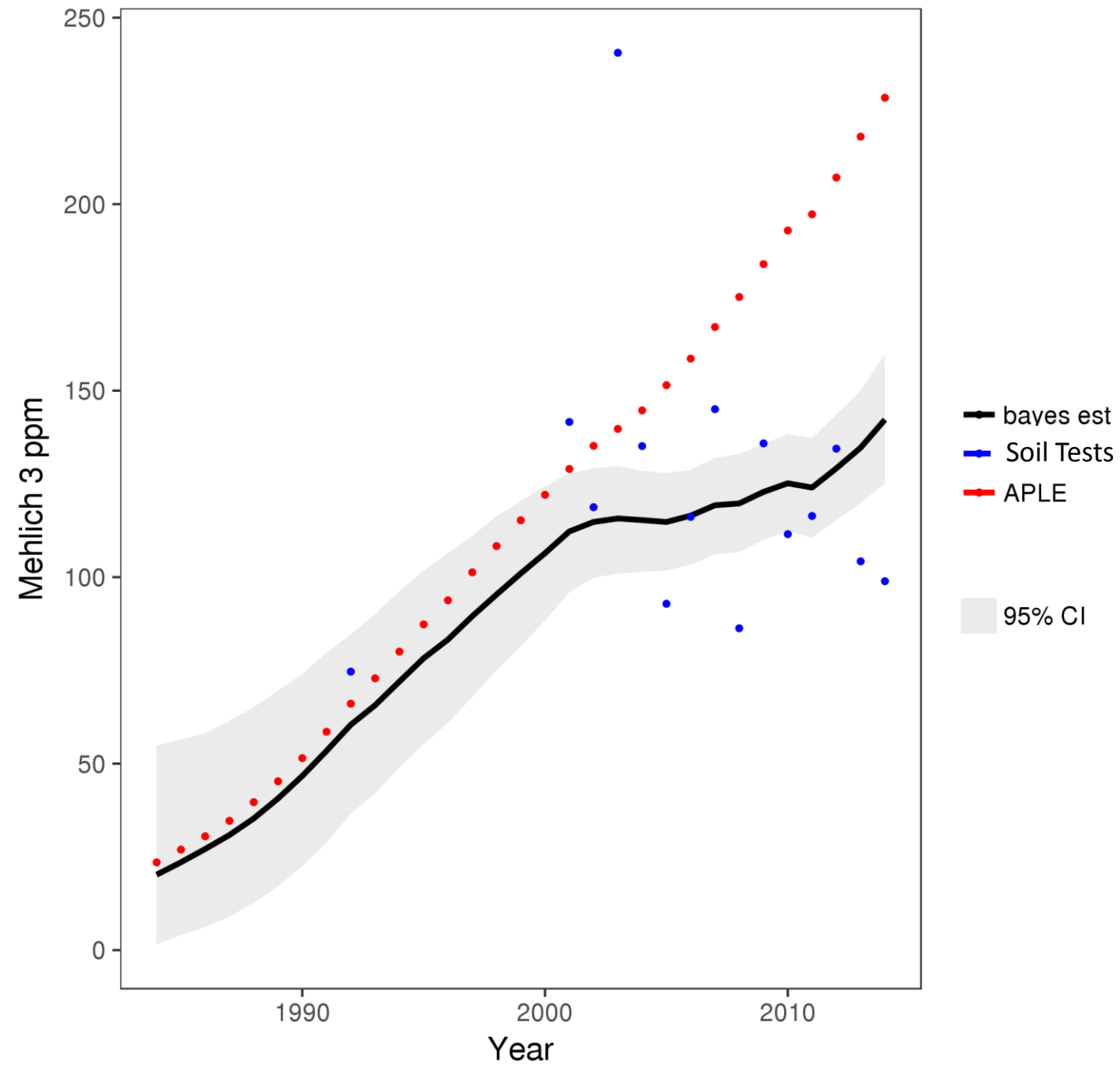


Examples









Summary

Soil Test Data



The APLE model



A Combination of the Two Incorporating Uncertainty

