

baytrends update

Rebecca Murphy

Tidal trends call

Jan 31, 2018

Where we are

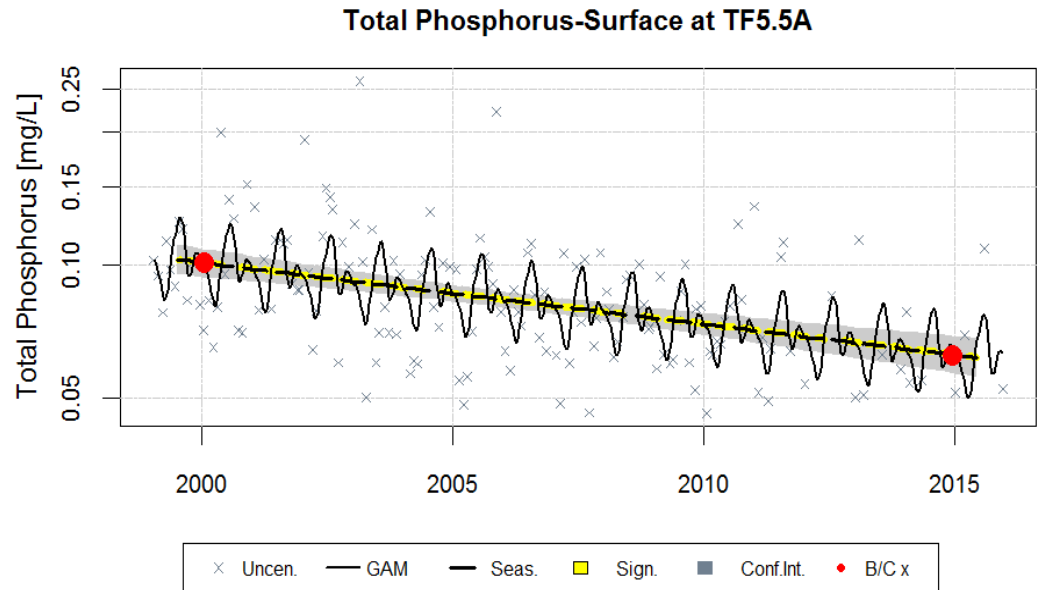
- V0.2.7 in spring/summer 2017
 - Functionality for: Censored data and method changes
 - Used for 2016 trends:
 - 1999-2016 for nutrients and chla
 - 1985-2016 for DO, secchi, salinity, temp
- v0.3.3 Dec 2017 deals with:
 - Functionality for: Censored data and method changes
 - Flow or salinity-adjustment
 - All combinations of those
 - Testing underway to use for 2017 trends

Summary of GAM models →

gam1

Linear trend with seasonality

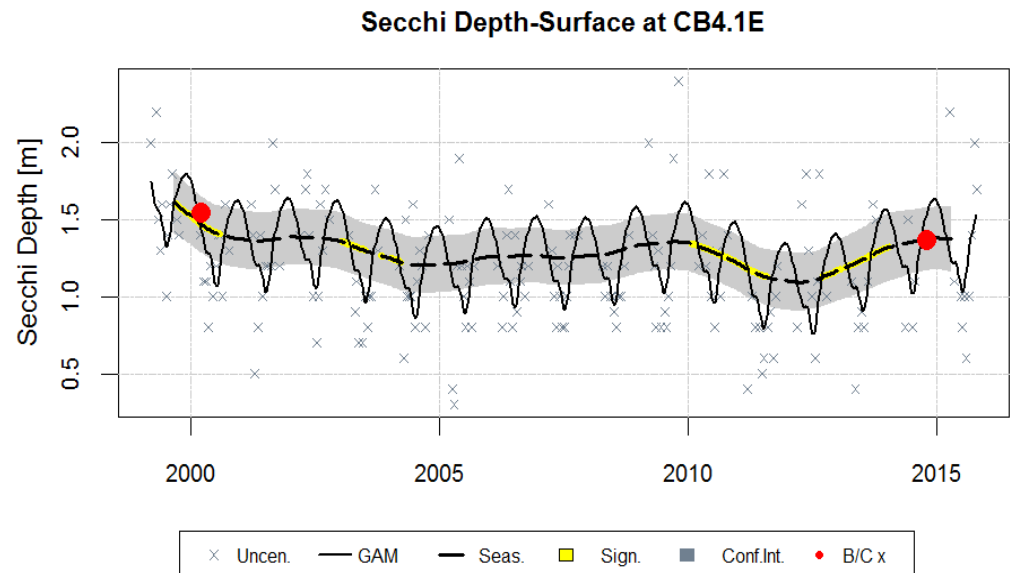
$\text{cyear} + \text{s(doy)}$



gam2

nonlinear trend with seasonality

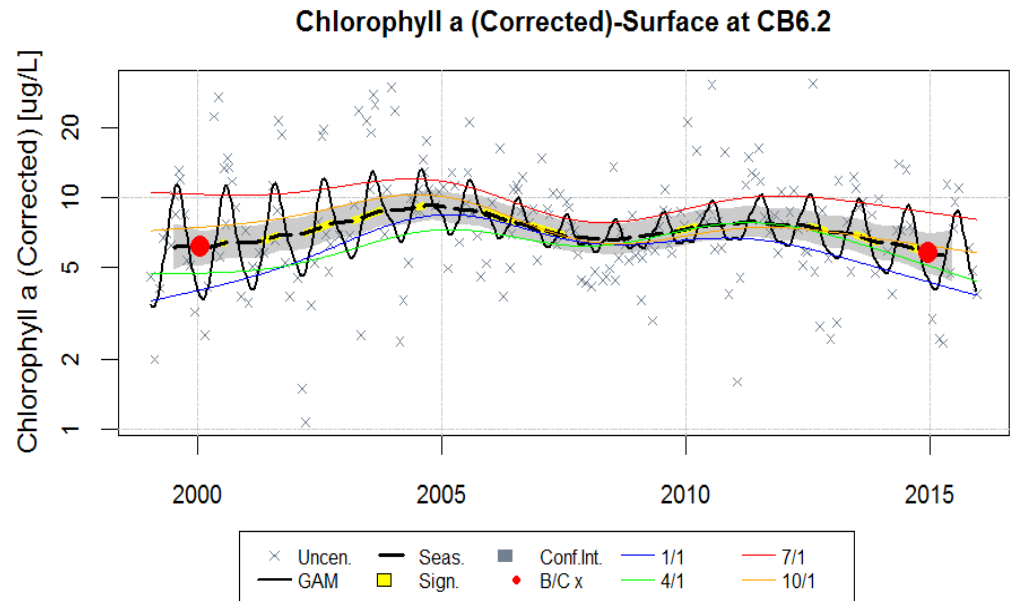
$\text{cyear} + \text{s(cyear)} + \text{s(doy)}$



gam2

nonlinear trend with
seasonality (plus interaction)

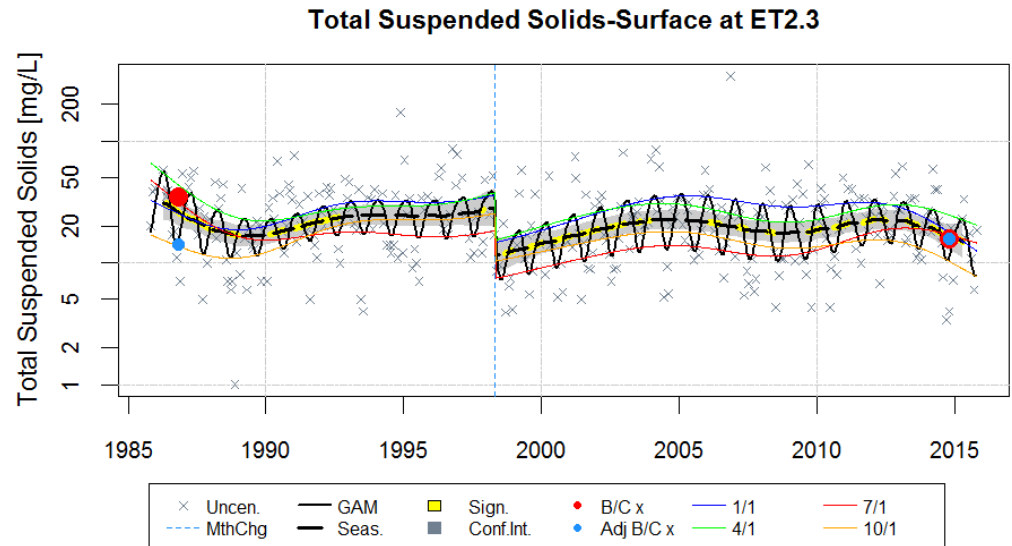
$\text{cyear} + \text{s}(\text{cyear}) + \text{s}(\text{doy}) +$
 $\text{ti}(\text{cyear}, \text{doy})$



gam3

nonlinear trend with
seasonality (plus interaction)
AND intervention

$\text{intervention} + \text{cyear} + \text{s}(\text{cyear}) +$
 $\text{s}(\text{doy}) + \text{ti}(\text{cyear}, \text{doy})$



gam4

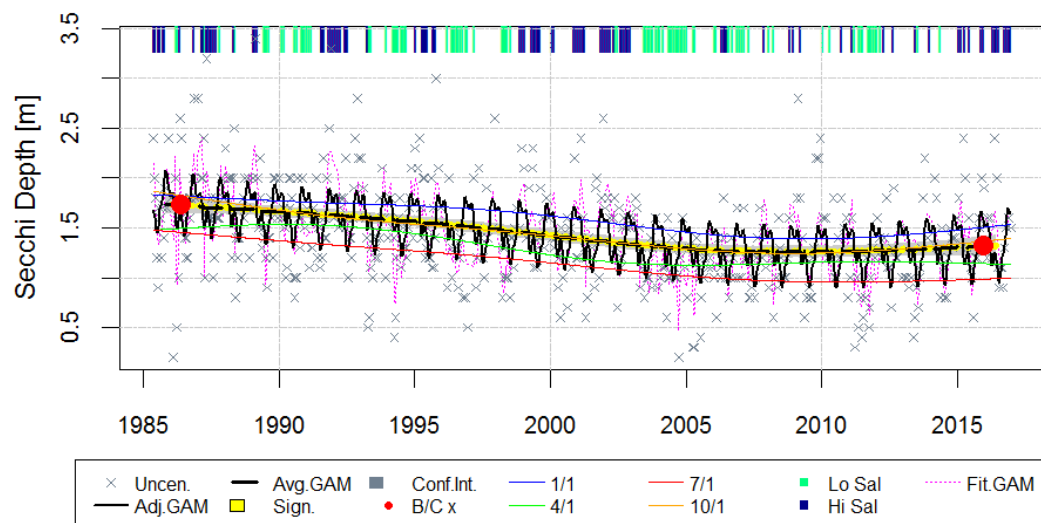
nonlinear trend with
seasonality (plus interaction)
PLUS flow or salinity

$\text{cyear} + \text{s}(\text{cyear}) + \text{s}(\text{doy}) +$
 $\text{ti}(\text{cyear}, \text{doy}) +$
 $\text{s}(\text{flow_sal}) +$
 $\text{ti}(\text{flow_sal}, \text{doy}) +$
 $\text{ti}(\text{flow_sal}, \text{cyear}) +$
 $\text{ti}(\text{flow_sal}, \text{doy}, \text{cyear})$

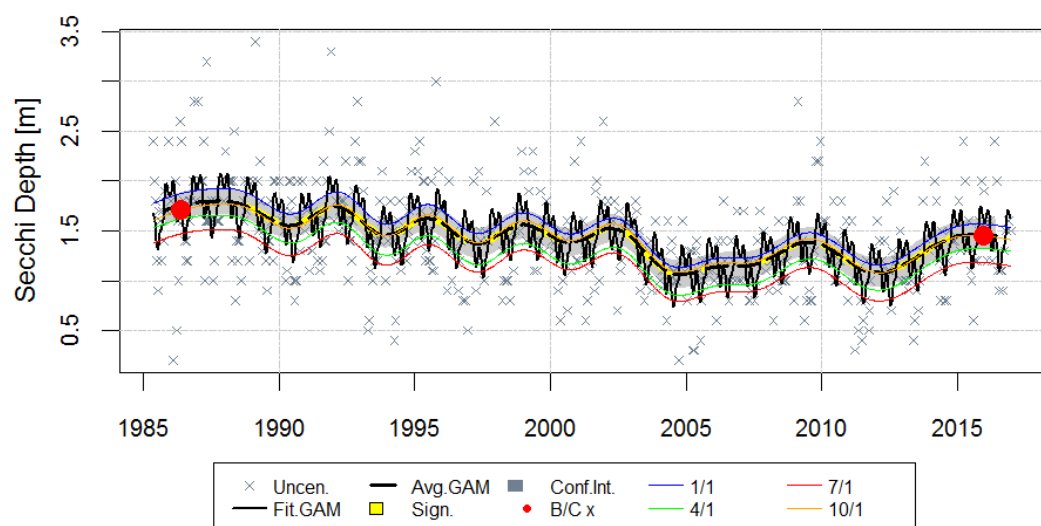
Flow terms

What it looks like with gam2:

Secchi Depth-Surface at CB4.1C



Secchi Depth-Surface at CB4.1C



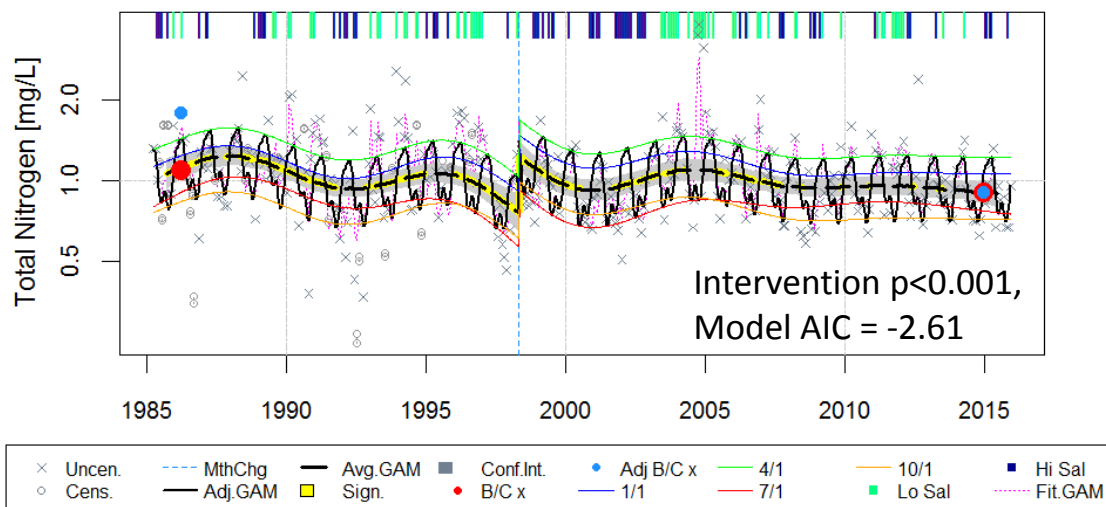
gam5

nonlinear trend with
seasonality (plus interaction)
PLUS flow or salinity AND
intervention

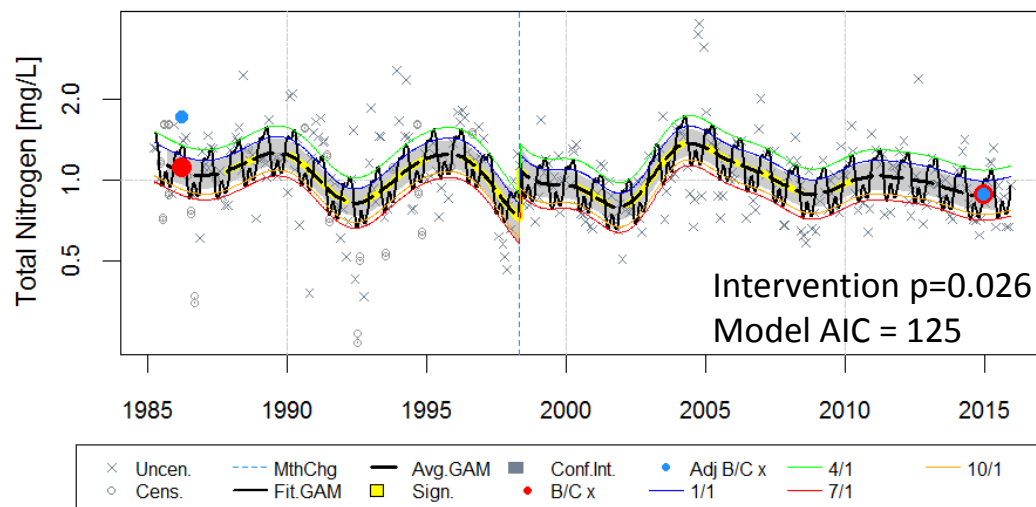
Intervention +
cyear + s(cyear) + s(doy) +
ti(cyear, doy) +
s(flow_sal) +
ti(flow_sal, doy) +
ti(flow_sal, cyear) +
ti(flow_sal, doy, cyear)

What it looks like with gam3
(intervention but no flow):

Total Nitrogen-Surface at WT6.1 (Magothy River)



Total Nitrogen-Surface at WT6.1



Documentation in the works

- Jon/Erik:
 - flow/salinity data loading
 - water quality data loading
- Next: other documentation we've spoken about – any priorities?
- Also: Manuscript about our GAM method underway