



Chesapeake Bay Program Partnership

☞ Federal agencies

- Environmental Protection Agency (EPA)
- US Department of Agriculture (USDA)
- US Forest Service (USFS)
- US Geological Survey (USGS)
- US Fish and Wildlife Service (USFWS)

☞ State agencies

- Natural Resources/Environmental departments
- Agricultural departments
- Parks and Recreation groups
- Fish and Wildlife agencies

☞ Local Governments

☞ Non-profit organizations

☞ Academic institutions



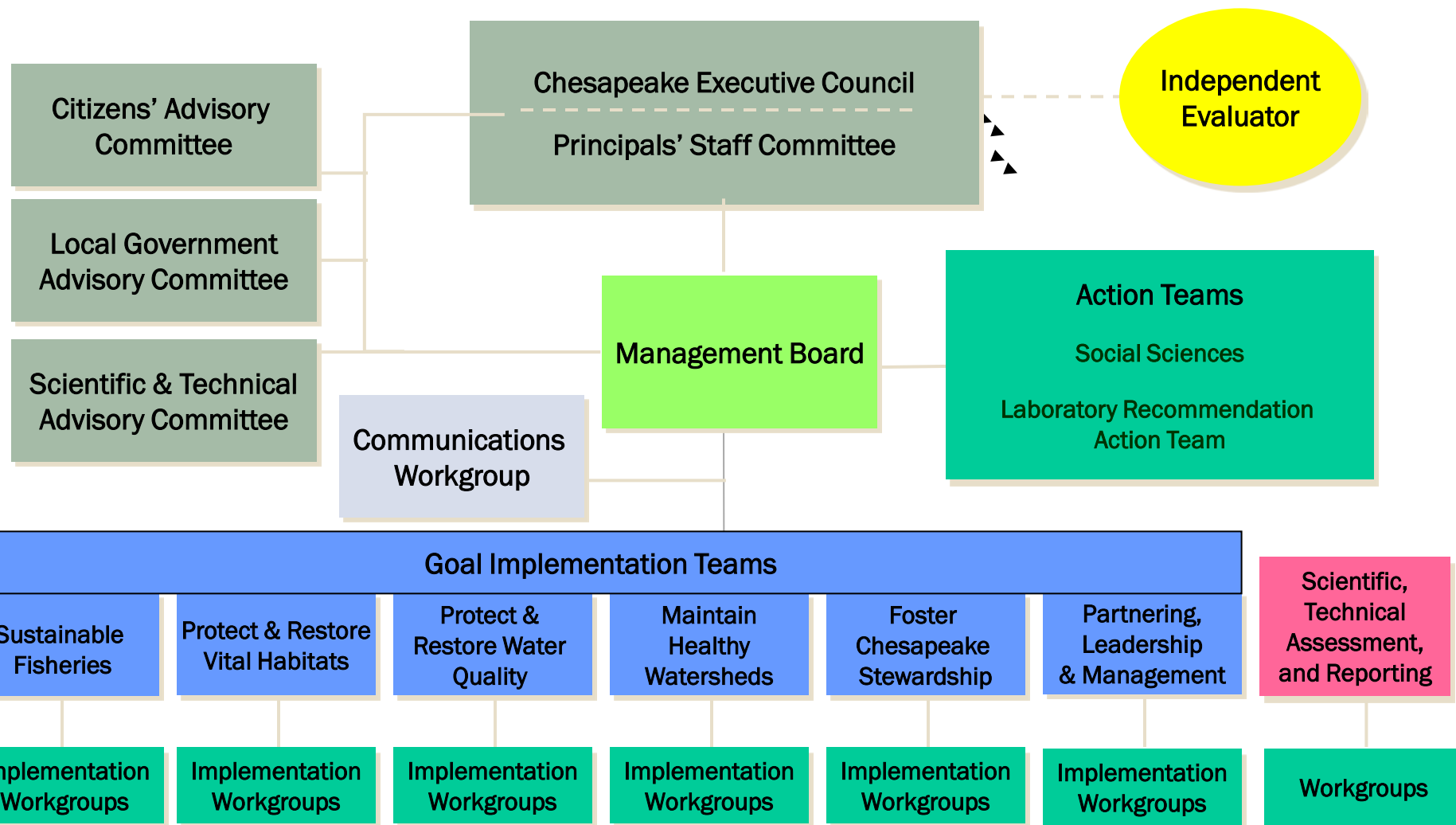
The Partnership Approach

- ☞ Brings together diverse leaders and experts across political boundaries and institutions to collaborate on achieving a common goal
 - Consolidate and coordinate efforts
 - Share resources
 - Compliment efforts and avoid duplication

- ☞ Partners come together to evaluate data, share best practices, report on progress toward goals, and make recommendations for program-wide policy and management decisions

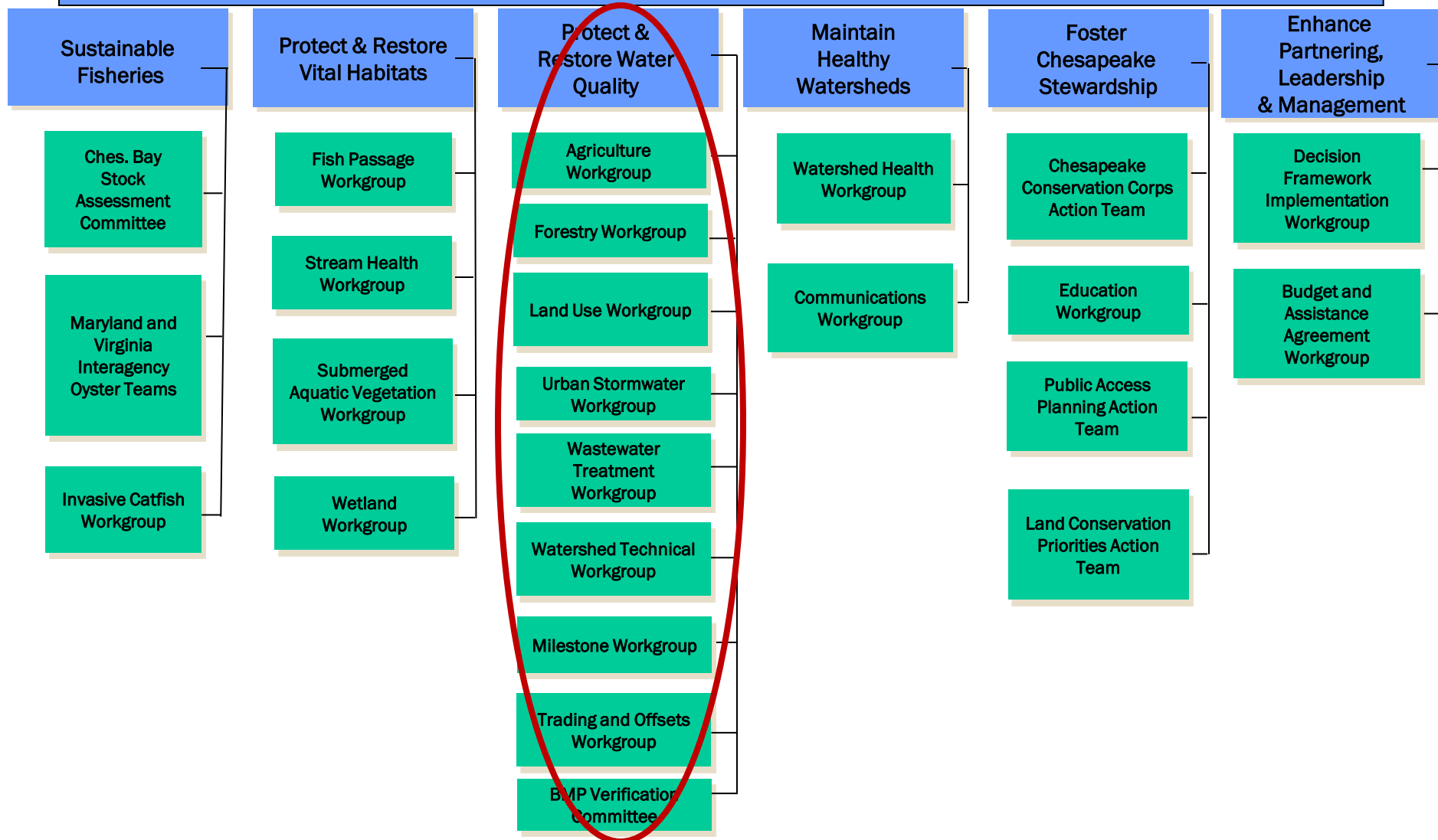
Organizational Structure

(2013)



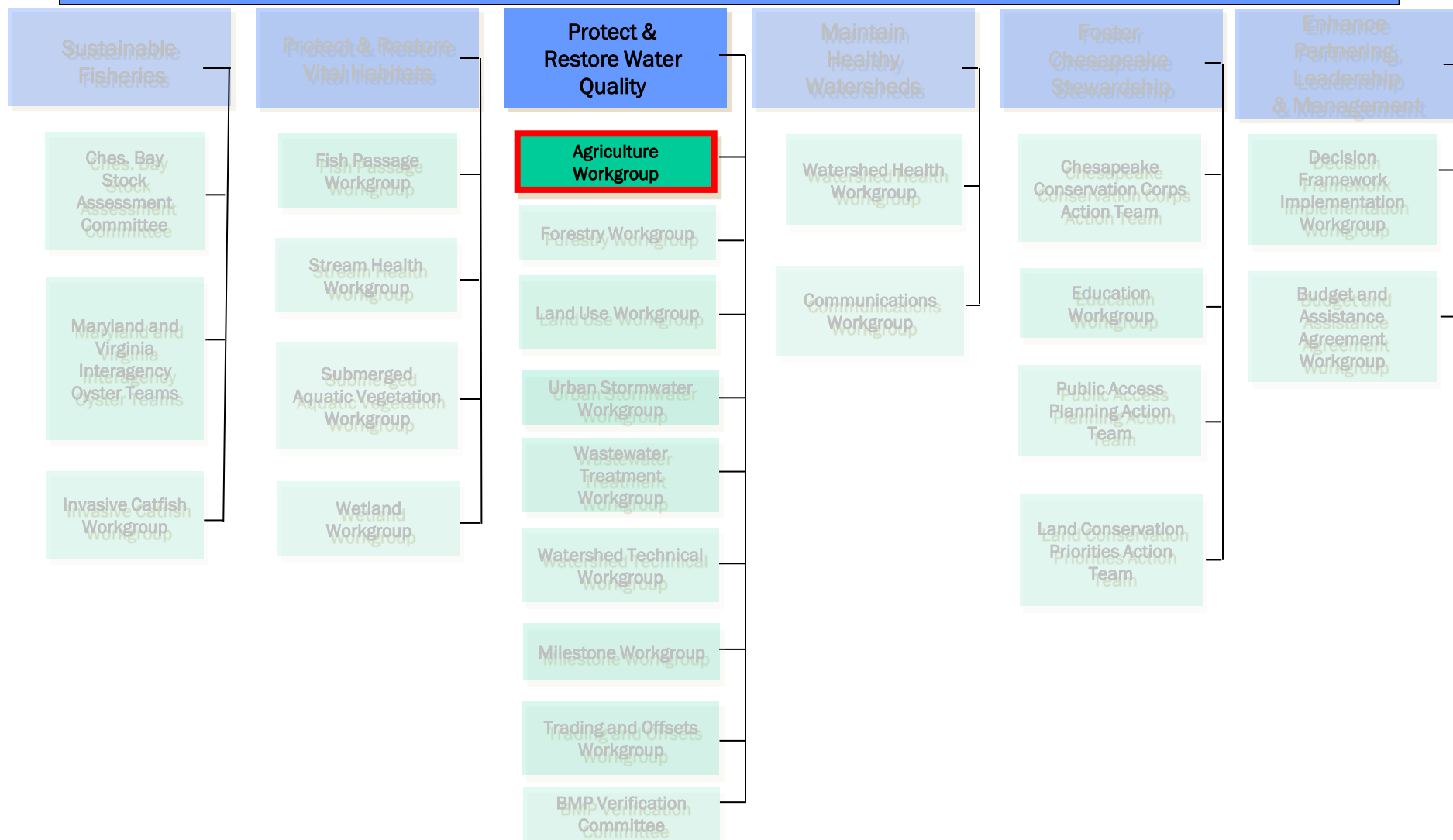
Organizational Structure (2013)

Goal Implementation Teams



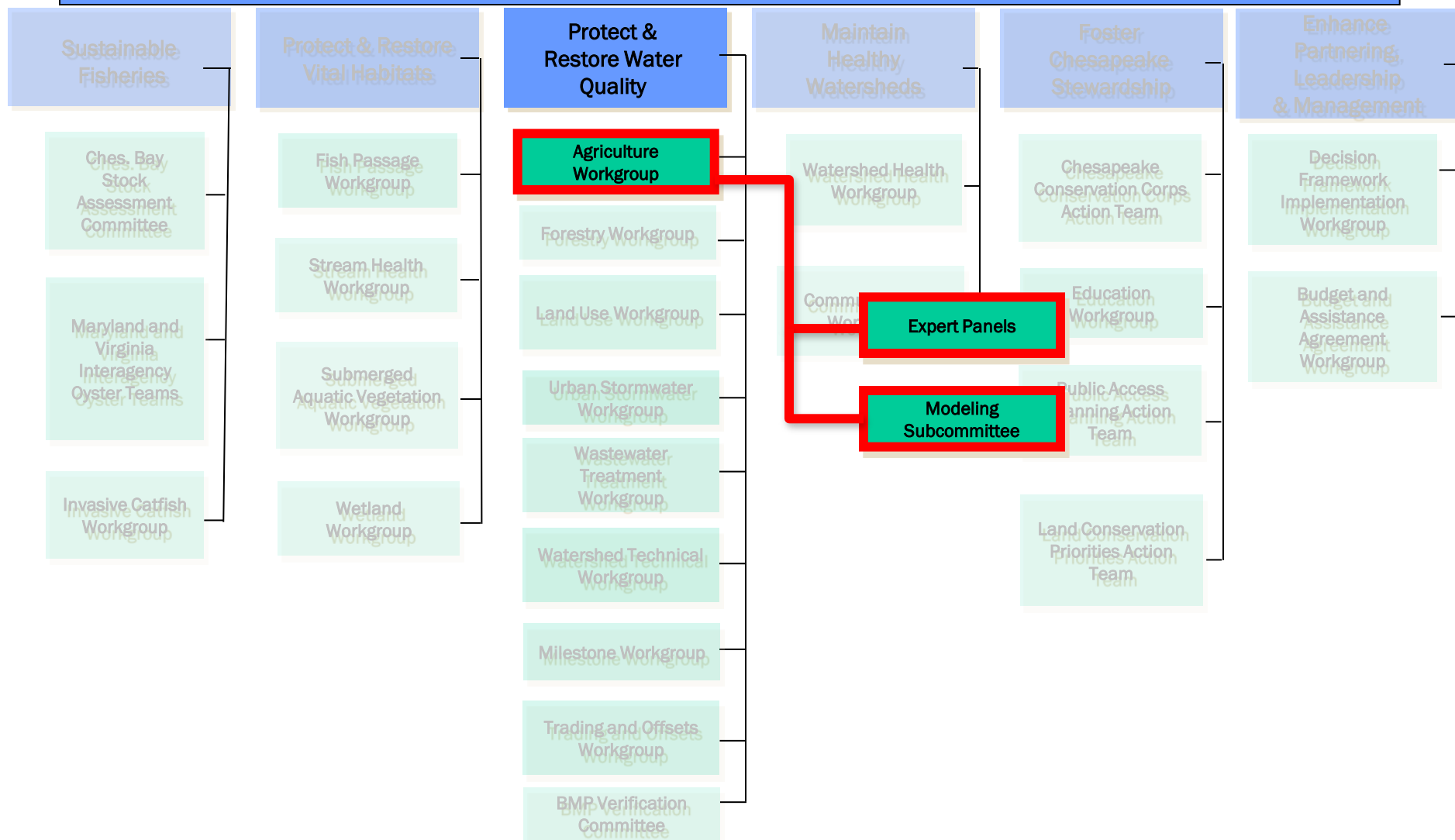
Organizational Structure (2013)

Goal Implementation Teams



Organizational Structure (2013)

Goal Implementation Teams (GITs)





Expert Review Panels: Planned and Active

Agriculture

- ✓ Nutrient Management
- ✓ Poultry Litter
- ✓ Conservation Tillage
- ✓ Cover Crop Panel
- Manure Treatment Technologies
- ⌘ Animal Waste Storage Systems
- ⌘ Manure Injection/Incorporation
- ⌘ Cropland Irrigation Management

Urban

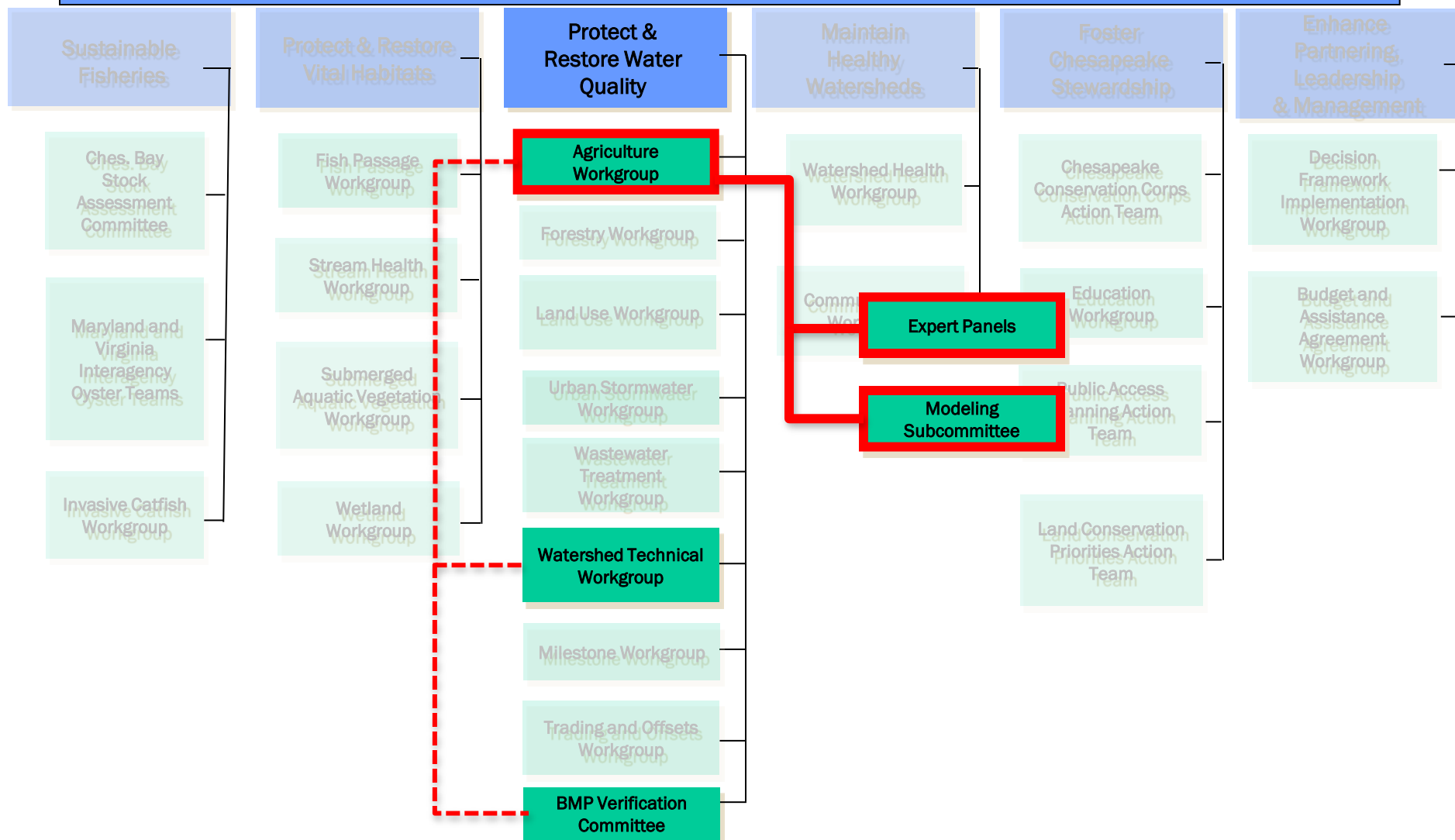
- ⌘ Urban Retrofits
- ⌘ Performance Based Management
- ⌘ Stream Restoration
- ⌘ LID and Runoff Reduction
- ⌘ Urban Fertilizer Management
- ⌘ Erosion and Sediment Control
- ⌘ Illicit Discharge Elimination
- ⌘ Impervious Disconnect
- ⌘ Floating Wetlands
- ⌘ MS4 Minimum Management Measures

Forestry

- ⌘ Riparian Buffers
- ⌘ Urban Tree Planting
- ⌘ Forest Management
- ⌘ Urban Filter Strips and Upgraded Stream Buffers

Organizational Structure (2013)

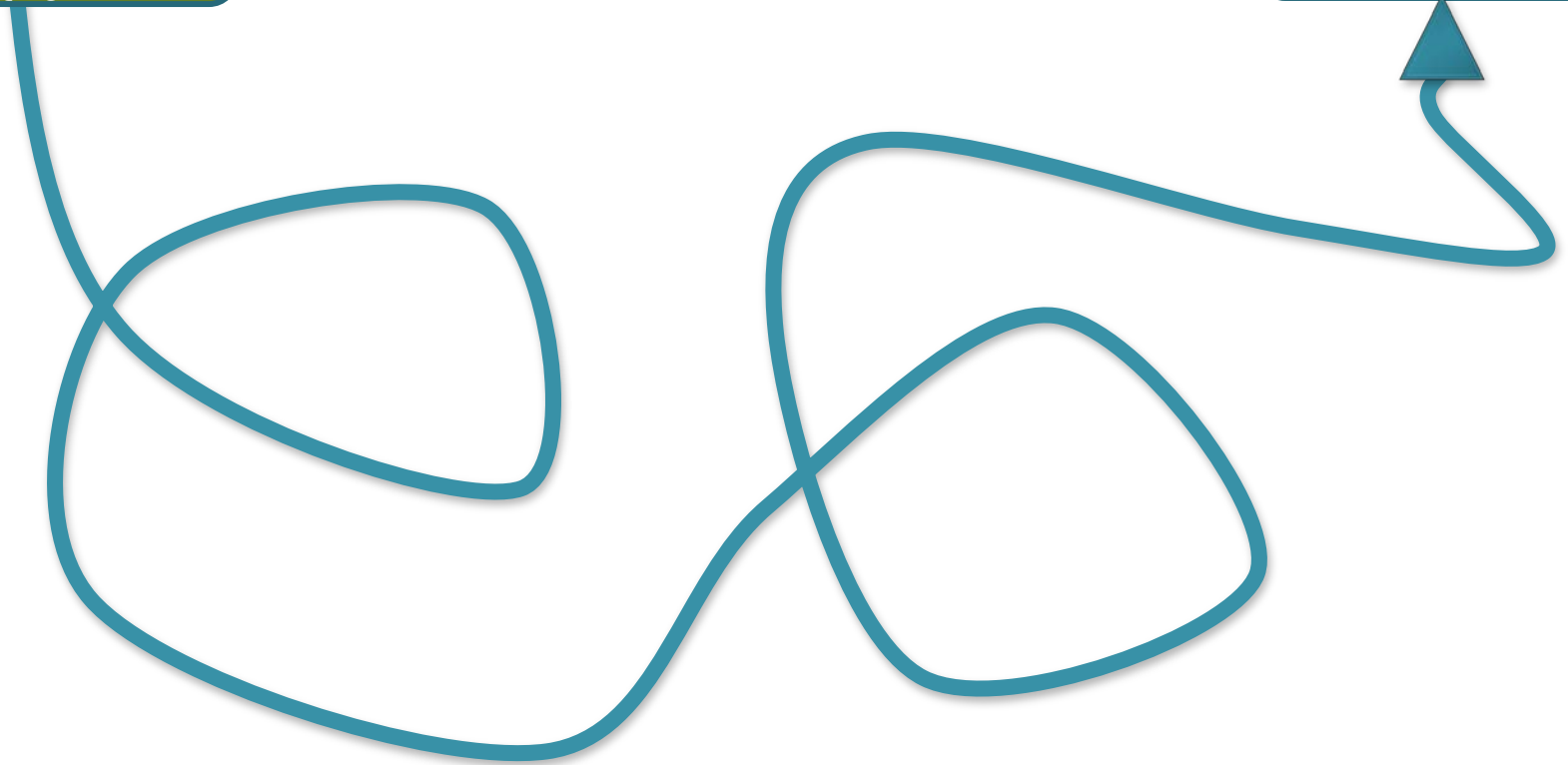
Goal Implementation Teams (GITs)



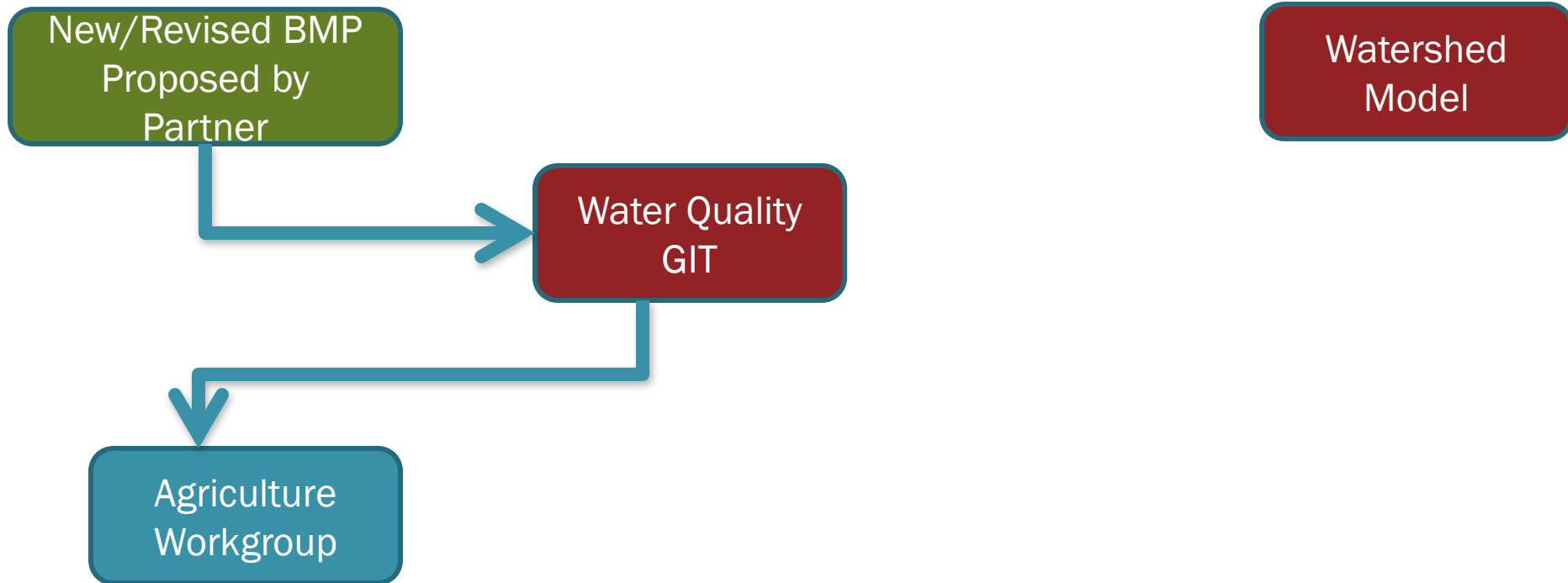
Protocol for Adding/Modifying BMPs

New/Revised BMP
Proposed by
Partner

Watershed
Model

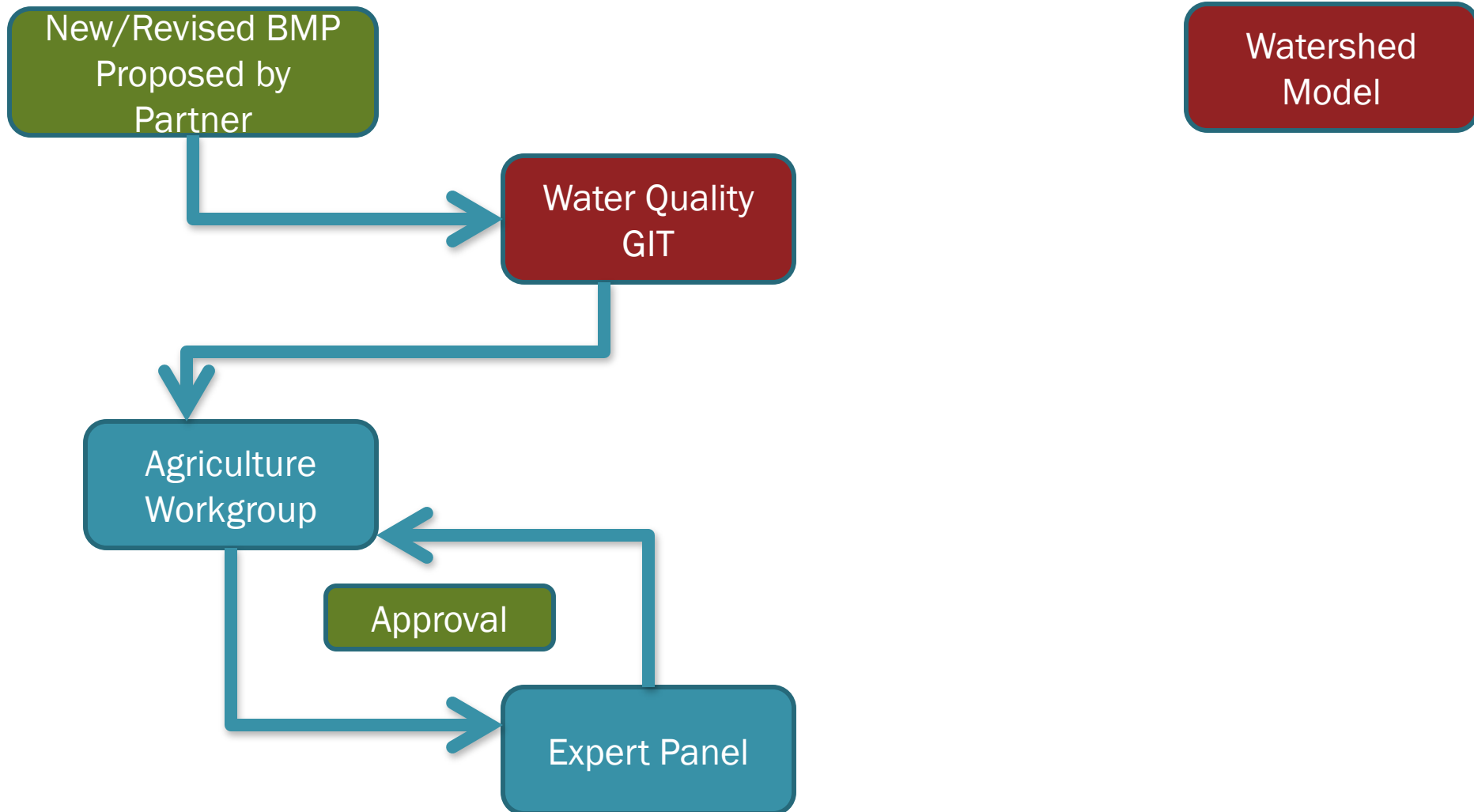


Protocol for Adding/Modifying BMPs



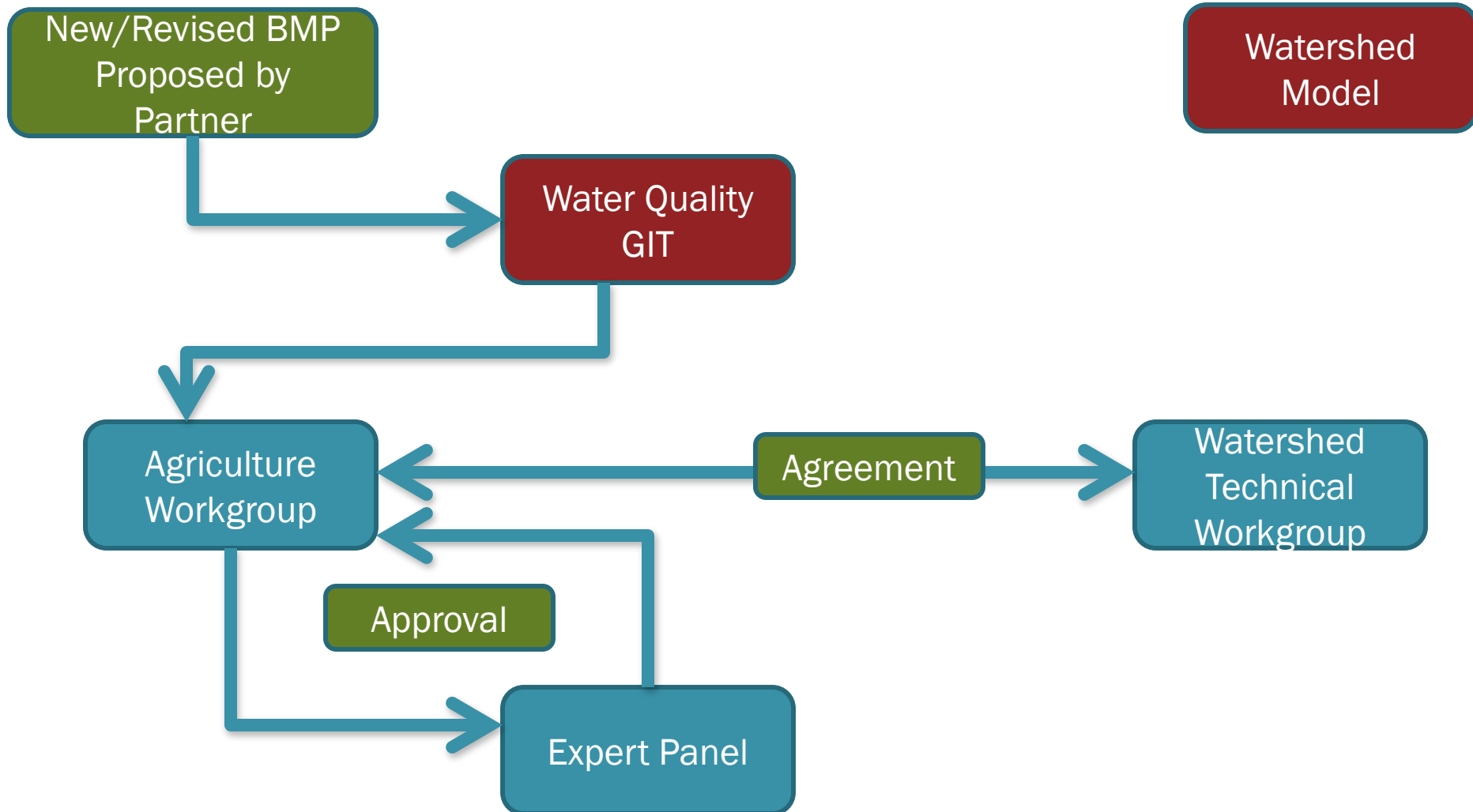


Protocol for Adding/Modifying BMPs



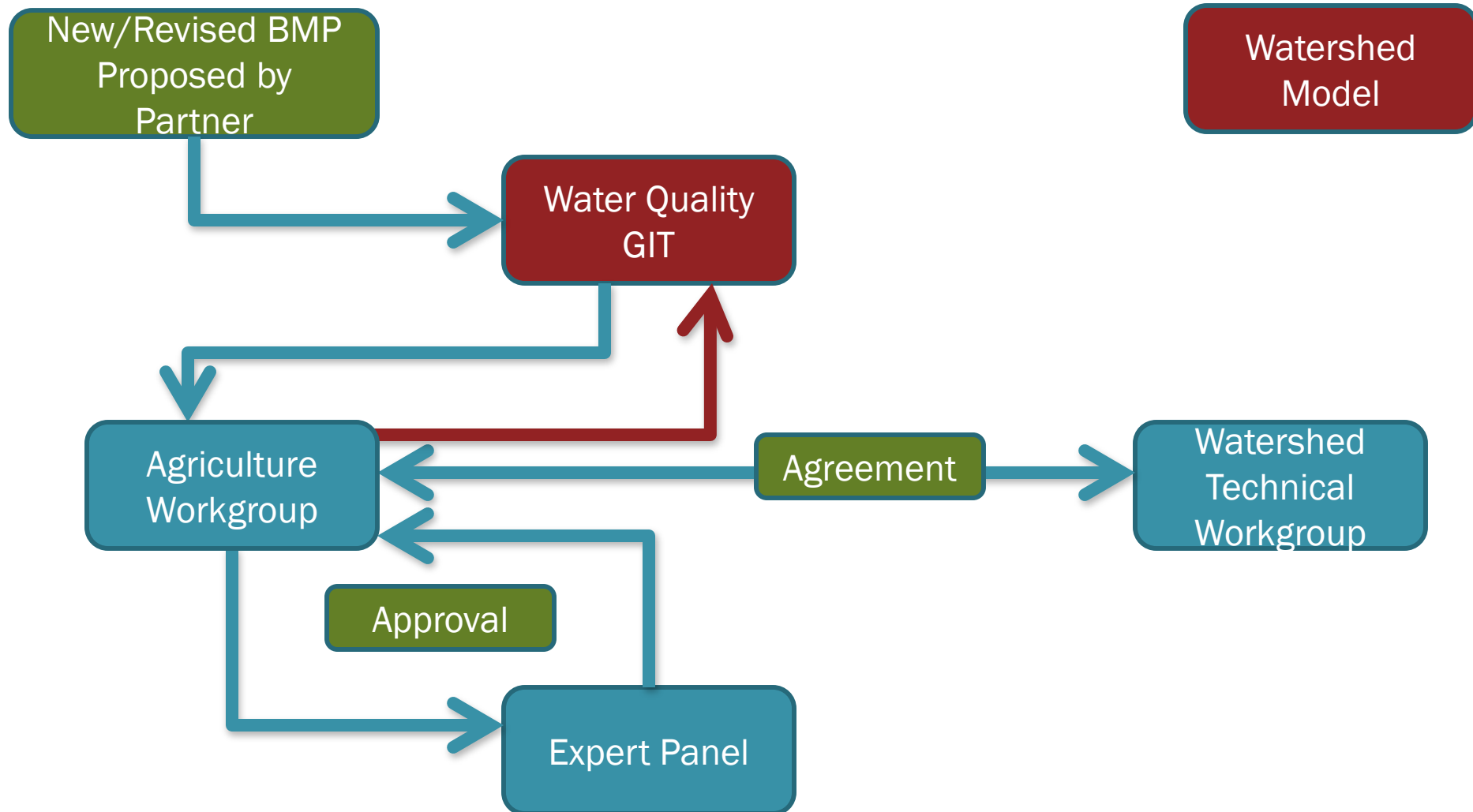


Protocol for Adding/Modifying BMPs

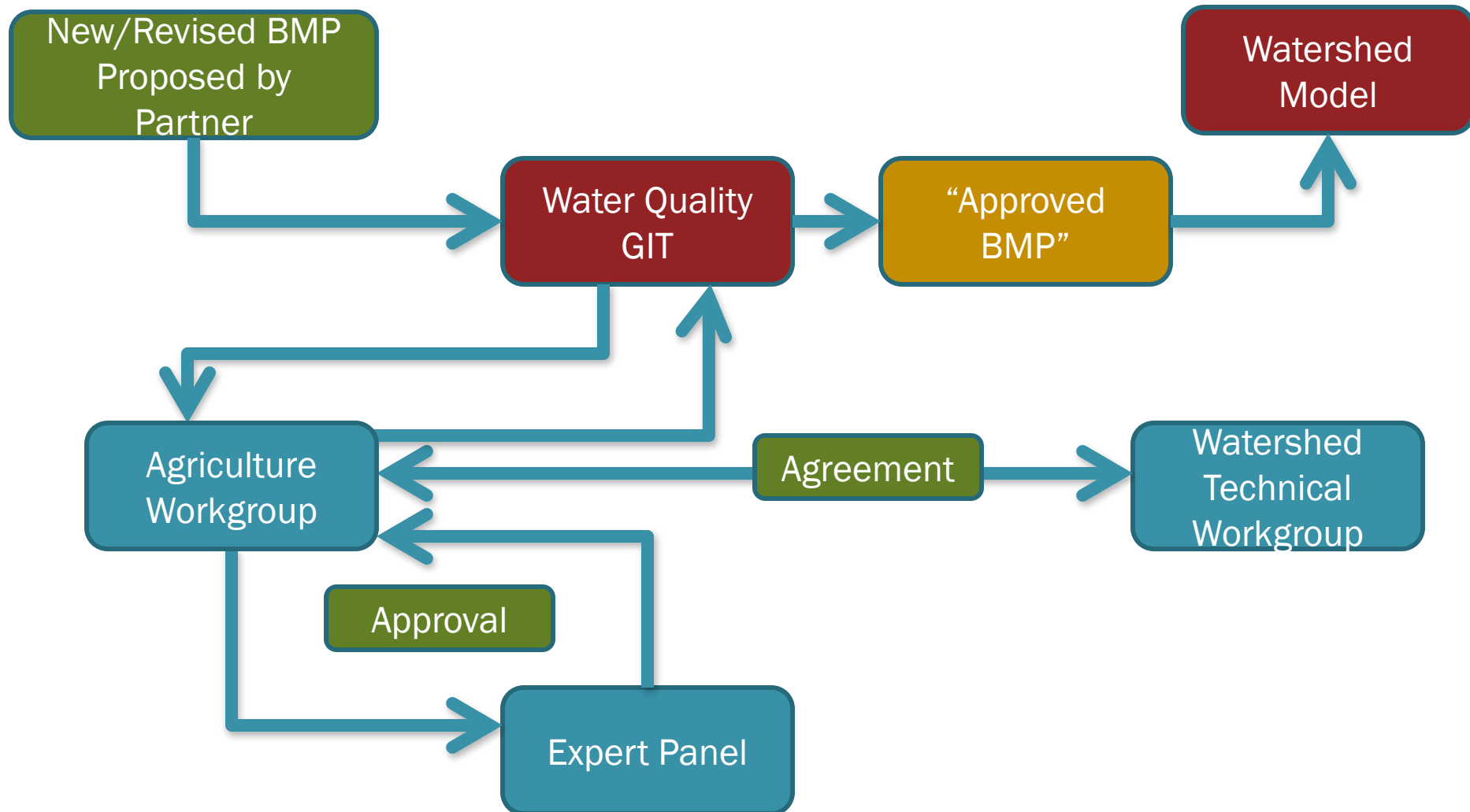




Protocol for Adding/Modifying BMPs



Protocol for Adding/Modifying BMPs



QUESTIONS ?



Chesapeake Bay Program
A Watershed Partnership