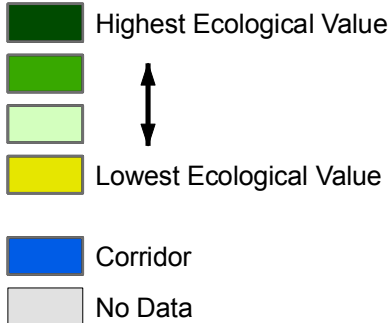


Ecological Network

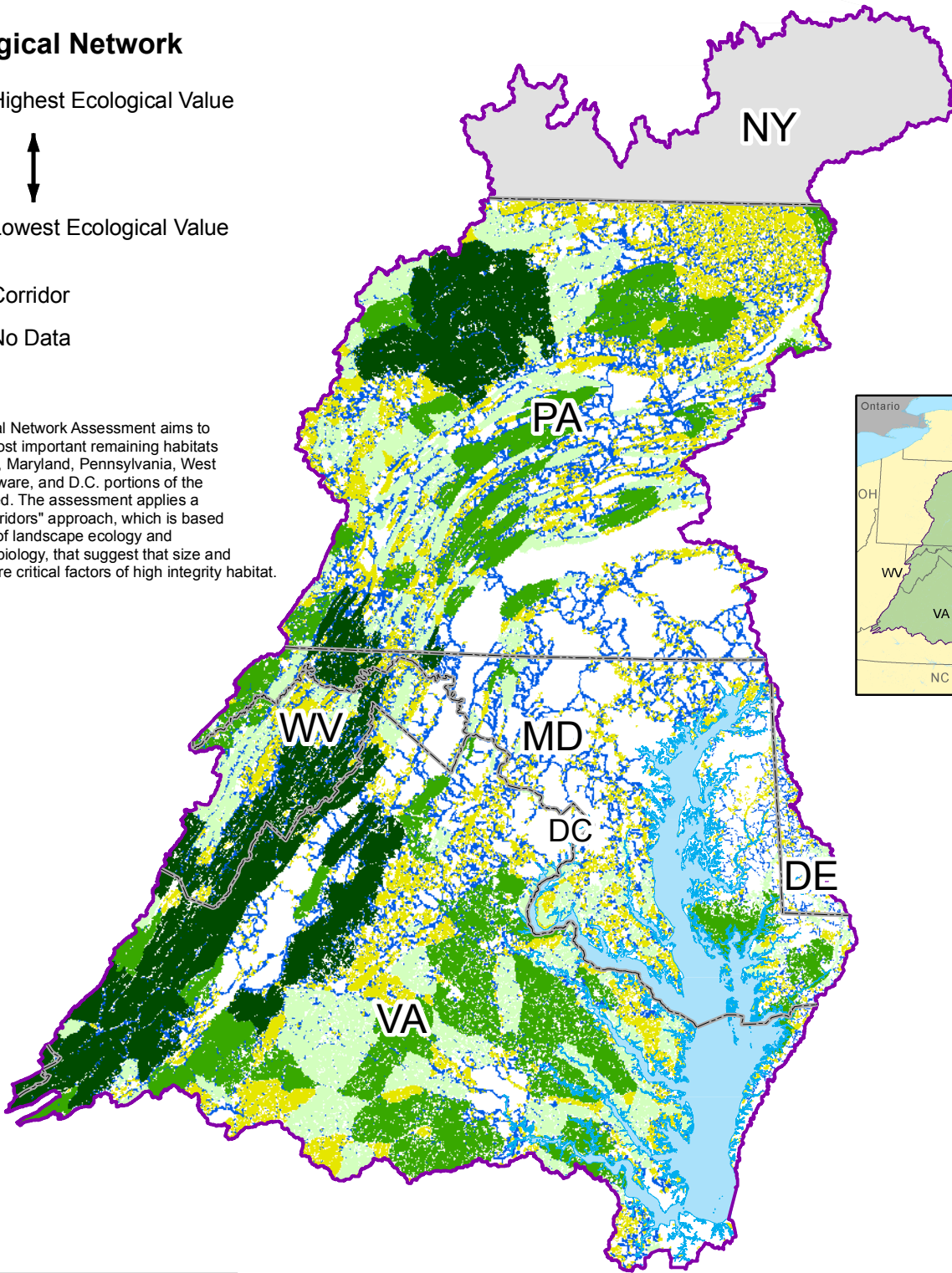
Resource Lands Assessment for the Chesapeake Bay Watershed



Ecological Network



The Ecological Network Assessment aims to identify the most important remaining habitats in the Virginia, Maryland, Pennsylvania, West Virginia, Delaware, and D.C. portions of the Bay Watershed. The assessment applies a "hubs and corridors" approach, which is based on principles of landscape ecology and conservation biology, that suggest that size and connectivity are critical factors of high integrity habitat.



Data Sources: Chesapeake Bay Program

For more information, visit www.chesapeakebay.net

Disclaimer: www.chesapeakebay.net/termsfuse.htm

